


# Educational and Participatory Communications



Arthur Aiu  
BWS Community Relations Specialist







**Conservation** is one of the single most significant ways we can **preserve** our precious water resources





# SPEAKER REQUESTS







WAIHE'E TUNNEL







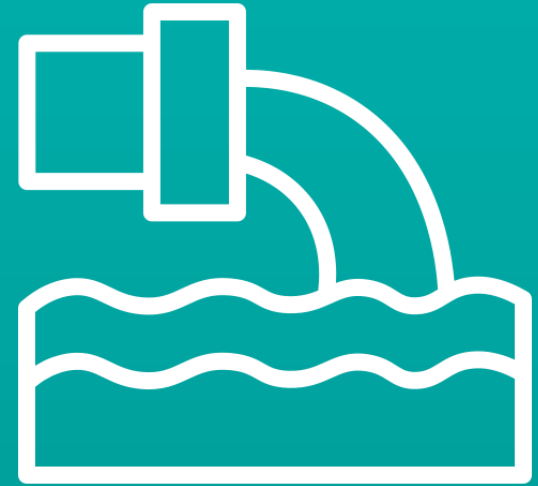
HONOLULU RECYCLED WATER FACILITY







ONE  
WATER  
HONOLULU



Our actions address climate impacts on water, wastewater, and stormwater infrastructure to work toward a resilient natural and built environment for our communities and ‘āina.





Sheri Mikami  
BWS Community Relations Specialist









# Xeriscaping

Xeriscaping promotes water conservation landscaping and can significantly reduce outside water use! Follow the seven xeriscaping principles below to maximize the beauty and value of your landscape and minimize waste of our natural resources.

**Planning & Design:** Start with a good plan and work in phases. It promotes good budgeting and time management which leads to better design and water conservation.

**Soil Improvement:** Use organic material to improve the soil's ability to retain moisture, provide necessary plant nutrients and encourage root development. Check your local university's agriculture, horticulture, or botany departments for soil evaluation and analysis services.

**Efficient Irrigation:** Maximize water conservation by watering according to plant and turf needs. Customize irrigation system to provide best watering method (i.e. drip irrigation, bubblers, or sprinklers.)

**Plant Selection:** The key is to plant appropriately. Choose plants that do well in your environment and group them according to water needs. Native plants, which thrive on natural rainfall, do best in a xeriscape.

**Mulch:** Mulches cool the soil, retain moisture, minimize evaporation, reduce weed growth, and slow erosion.

**Limit Turf Area:** Grass requires the greatest amount of water and maintenance. Use turf only when necessary.

**Good Maintenance:** A well-maintained landscape can be easy to care for, requiring less maintenance and reducing the need for chemical fertilizers and pesticides.

What makes a good xeriscape plant? There are many different plants that you can choose to grow in your landscape. Here are a few characteristics that can help identify them as "less-thirsty"



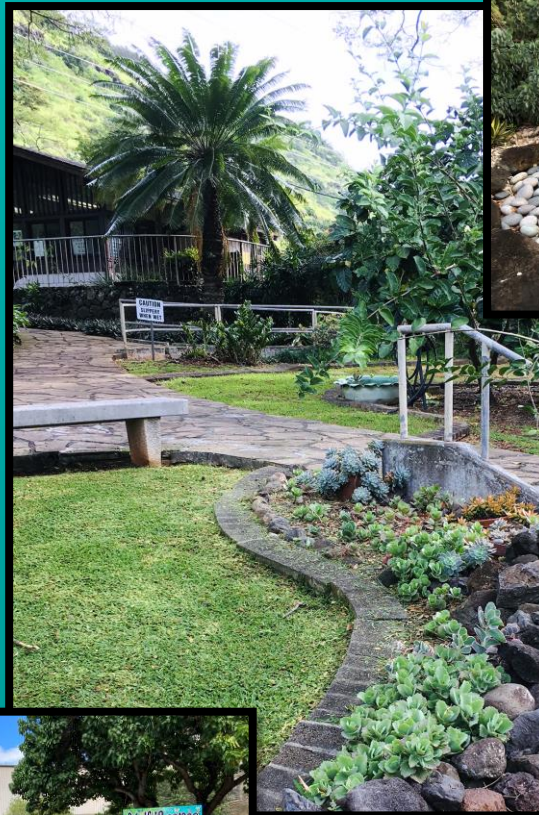
1 Aloe: Thick & waxy leaves store water & reduce transpiration. 2 Aloe: Thick & waxy leaves store water & reduce transpiration. 3 Aloe: Thick & waxy leaves store water & reduce transpiration. 4 Aloe: Thick & waxy leaves store water & reduce transpiration. 5 Aloe: Thick & waxy leaves store water & reduce transpiration. 6 Aloe: Thick & waxy leaves store water & reduce transpiration. 7 Aloe: Thick & waxy leaves store water & reduce transpiration. 8 Aloe: Thick & waxy leaves store water & reduce transpiration.



## Hālawā Xeriscape Garden

Friends of Hālawā Xeriscape Garden  
boardofwatersupply.com | (808) 748-5315





# HĀLAWA XERISCAPE GARDEN







NURSERY PROPAGATION VOLUNTEERS



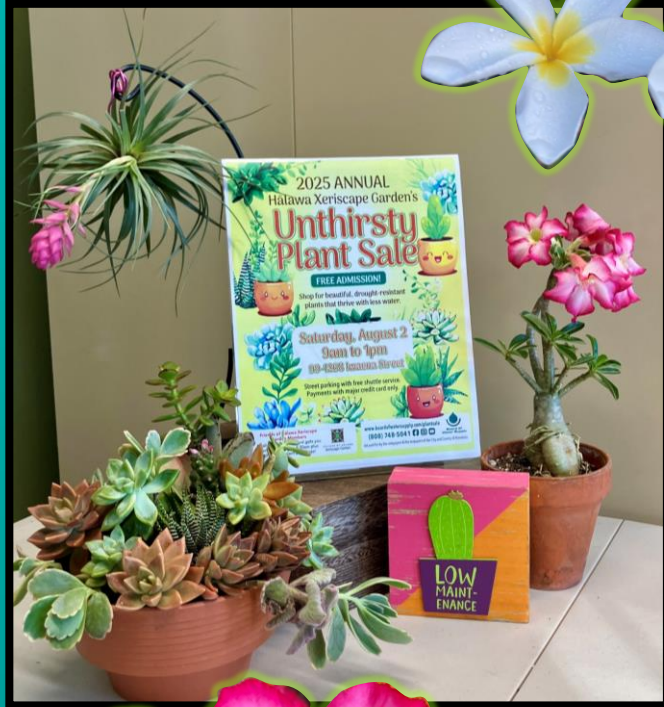
ANNUAL FOHxG VOLUNTEER  
APPRECIATION LUNCHEON



# HĀLAWA XERISCAPE GARDEN VOLUNTEERS







# ANNUAL HĀLAWA XERISCAPE GARDEN UNTHIRSTY PLANT SALE







MOANALUA HIGH, GARDEN CLUB  
2023 TURKEY TROT HEALTH FAIR



MOANALUA ELEM, 2ND GRADE  
BUSINESS DAY RECYCLED  
POT WORKSHOP



2024 SALT LAKE ELEMENTARY 5TH GRADE  
STEM EVENT



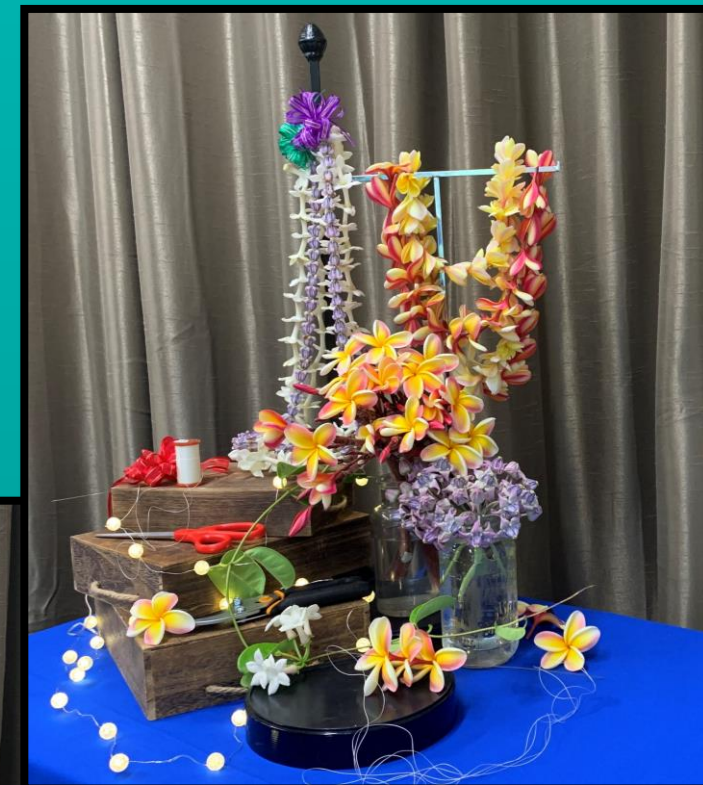
# XERISCAPE WORKSHOPS/EVENTS







Recycled Plastic Bottle Planters



FIND INSPIRATION IN YOUR GARDEN TO DECORATE DIY PROJECTS



MAKE YOUR OWN BEAR PLANTER

# XERISCAPE GARDEN CRAFTS







KHON2 TAKE2 GARDENING SEGMENTS 



Michele Harman

BWS Communications Relations Specialist

[mharman@hbws.org](mailto:mharman@hbws.org)



# Mauka to Makai - & online!

2019-2025

- Mālama 'Āina Program
- Social Media Program
- Urban Native Xeriscape Gardens at our facilities
- Invasive Species Program
- City & County Ed & Outreach Hui

2026

- Mālama 'Āina Program in coastal/ocean areas
- Strengthen these new programs



**JOIN US!**  
July 27 to August 26  
GIVEAWAYS INC: DECON KITS,  
RAIN BARRELS, PLANTS,  
CONSERVATION SHIRTS &  
MORE!!

Decontaminating  
your gear before  
and after entering  
the forest helps to  
protect native  
species like 'ōhi'a!

<https://hbws.me/decon2022>

MONDAYS  
@OAHUISC  
& WEDNESDAYS  
@BWSHONOLULU

Board of  
Water Supply

OISC  
OAHU INVASIVE SPECIES COMMITTEE  
www.oahuiscc.org

'Ohia  
Love  
www.ohialove.org







# MĀLAMA 'ĀINA PROGRAM





# SOCIAL MEDIA



## WATER FOOTPRINT GIVEAWAY & CHALLENGE

**How do I enter?**

- Follow @bwshonolulu
- Like & save this post
- Go to <https://www.watercalculator.org/> (link in bio)
- In the comments, tell us:
  - What is your water footprint (gallons/day)?
  - What's your favorite water joke?!
- First 2 accounts to respond by noon on Saturday win a waterless car wash kit from @detailgaragehawaii!

Extra giveaways!!! BWS stickers will be mailed to anyone who tells us your water footprint OR water tip. 'Ōhi'a Love stickers to anyone who can name a native landscaping plant that doesn't need a lot of water. Opportunity closes 7/17.

SWIPE →

THIS CONTEST ISN'T SPONSORED, ENDORSED, OR ADMINISTERED BY, OR ASSOCIATED WITH, INSTAGRAM

The screenshot shows an Instagram post with the following details:

- Post by @bwshonolulu (Cali, Hawai)
- Caption: #bestdog #ohu #hawaii #hawaii #endamaakawa #mamakawa #hawaii #hawaii #waterfootprint #hawaii #hawaii
- Comments:
  - georgiamale Super cute 🐶
  - haimanapine 🐶
  - alanyas 1,000 gallons! What happens when you pull water on the toilet? It becomes a pool! Puhuhuh is a native flower that needs little water!
  - ashleyandpapa 1,198 gallons per day! What did the Pacific Ocean say to the Atlantic? Nothing, it just waved 🌊
  - Drought tolerant native plant: Kulu!
  - kristaunfuhawaii 1,512 gallons here! There are two reasons you should never drink toilet water... number one and number two! 🚽
  - papaym0205 1,505 gallons per day (personal). Knock knock. Who's there? Water. Water who? Water you waiting for, open the door!
- Post date: July 15, 2022
- Post type: Post



# NATIVE URBAN XERISCAPING AT FACILITIES



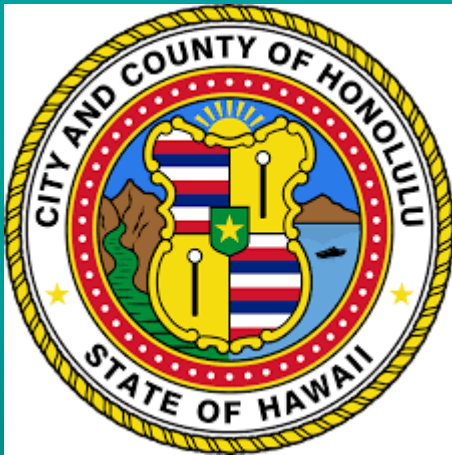
# INVASIVE SPECIES PROGRAM





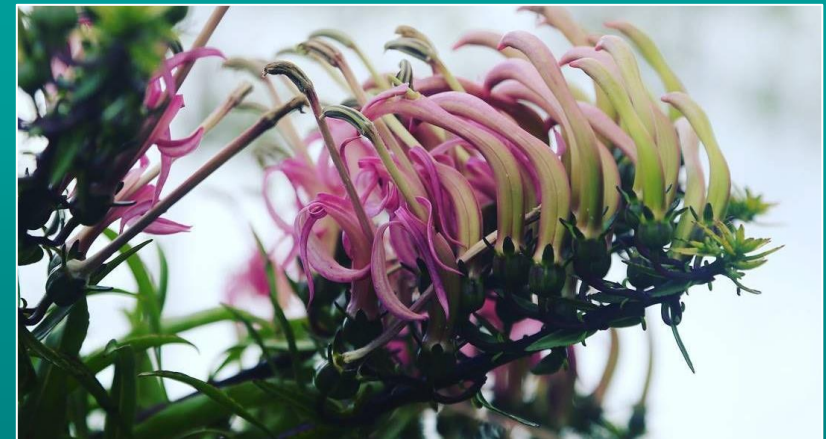
# CITY & COUNTY EDUCATION & OUTREACH HUI

## GREEN JOBS





- Waiwai
- Pilina
- Kuleana
- Aloha 'Āina



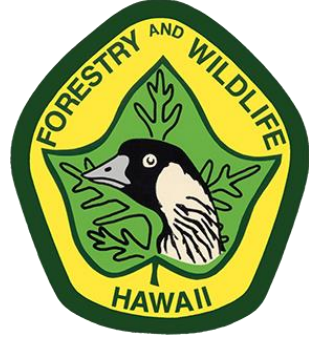




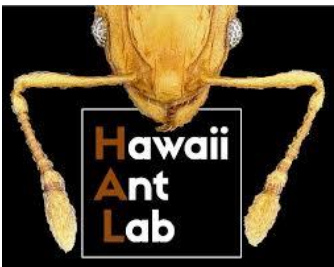








MAHALO!



hui o ko'olaupoko  
Protecting ocean health by restoring the āina: mauka-to-makai



STORM WATER PROGRAM  
CITY AND COUNTY OF HONOLULU



HOMA













Ani Turner

KDOW Information & Education Specialist

[aturner@kauaiwater.org](mailto:aturner@kauaiwater.org)



