

Collaboration Framework

October 15, 2025

HWHA ANNUAL CONFERENCE



contents

1

One Water
Honolulu

2

Collaboration
Framework
Overview

3

Collaboration
Framework:
Foundation for
Collaboration

4

Collaboration
Framework:
Path to
Success

A collaborative strategy towards resilience

One Water Honolulu



One Water Honolulu: A Path to Success

Growing Support

One Water Honolulu PHASE 1

Climate Change Impacts Researched
Sustainable and Environmental
Policies Identified
One Water Panel Established
One Water Honolulu Program
Launched
Shared One Water Approach
Formalized
Dedicated Federal Funding Approved

Creating a Path to Success

One Water Honolulu PHASE 2

One Water Honolulu Plan
Development

Collaboration Framework
Development and Implementation

- Foundation for Collaboration
- Collaboration for Project Implementation

COLLABORATION FRAMEWORK:

A process to
organize sustained
institutional
collaboration and
stakeholder
engagement

One Water Honolulu: One Water Panel

One Water Panel

- Office of Climate Change, Sustainability, and Resiliency
- Board of Water Supply
- Department of Design and Construction
- Department of Environmental Services
- Department of Facility Maintenance
- Department of Parks and Recreation
- Department of Planning and Permitting
- Department of Transportation Services

One Water Honolulu: Vision and Mission

Ho‘omoe wai kāhi ke kāo‘o
“Let us travel together like
water flowing in one direction”

— Mary Kawena Pukui's *‘Ōlelo No‘eau* (*‘Ōlelo No‘eau no. 1102, Pukui 1983*) *Hawaiian Proverbs and Poetical Sayings*

Vision

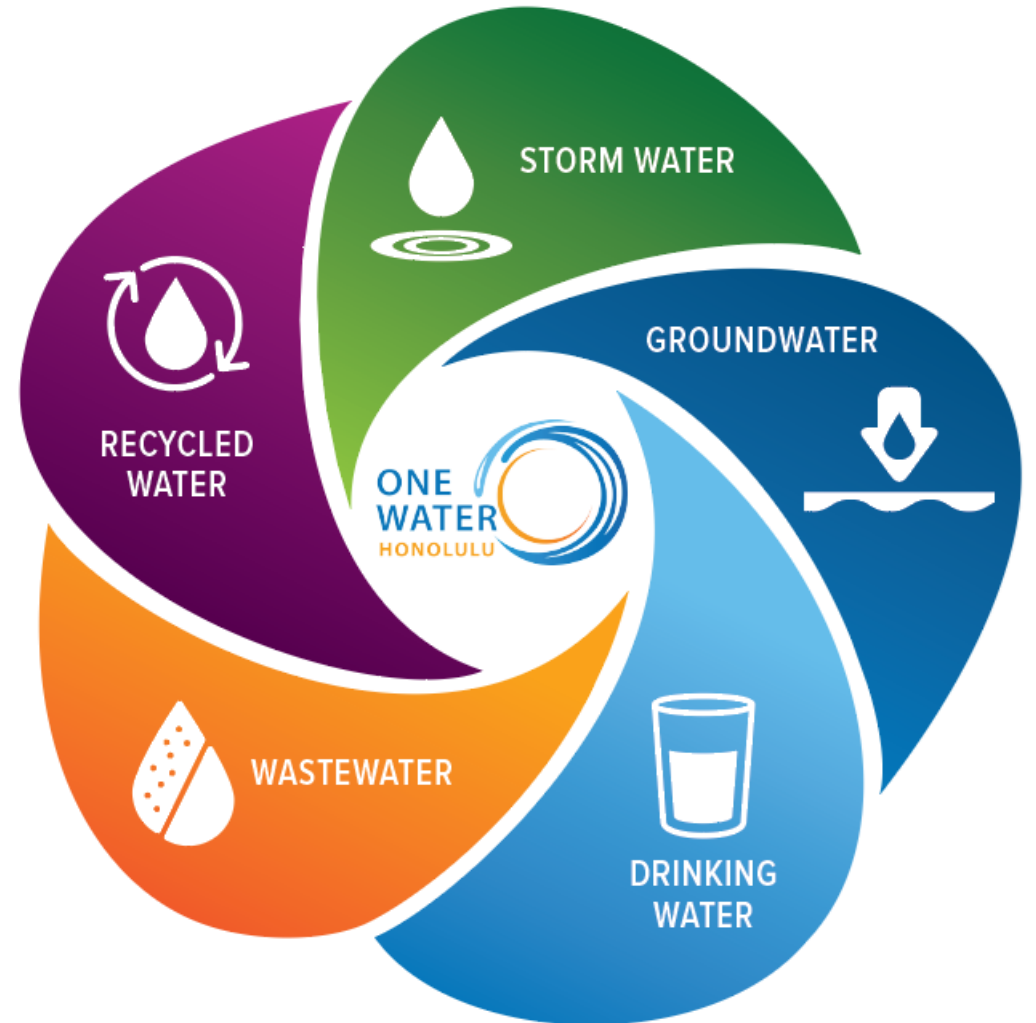
Collaborating for a thriving and climate resilient O‘ahu

Mission

One Water Honolulu champions cost-effective and climate resilient infrastructure services and natural systems for the people, culture, and sustainability of O‘ahu through integration and innovation in planning, implementation, and maintenance.

One Water Honolulu: Guiding Compass

One Water focuses on collaboration strategies for an integrated system that supports the community and environment



One Water Honolulu: Context

Grounded in the ahupua'a concept and Hawaiian values, history, and culture

- Understanding climate challenges from mauka to makai
- Building from traditional Hawaiian water stewardship
- Incorporating One Water solutions to guide sustainable behaviors and water cycle investments



One Water Honolulu: Objectives

Through unity we gain opportunity

City agencies, businesses, and community partners have a shared kūleana for a climate resilient O‘ahu

BY WORKING TOGETHER WE CAN:

1. **Practice a shared kūleana** for a climate resilient O‘ahu
2. **Enhance coordination** and recognize interconnections to develop and implement projects and strategies
3. **Amplify the voices of O‘ahu’s people** through meaningful stakeholder engagement
4. **Develop a unified roadmap** and decision making process under a One Water approach
5. **Streamline permitting processes** to efficiently advance project implementation
6. **Work together** to leverage resources and enable climate readiness
7. **Collectively advocate** for and pursue funding to support multi-benefit projects

Overview

Collaboration Framework



Collaboration Framework: Overview

An adaptable process for working together to advance a shared vision

Making good decisions, engaging stakeholders, and working together toward greater climate resilience

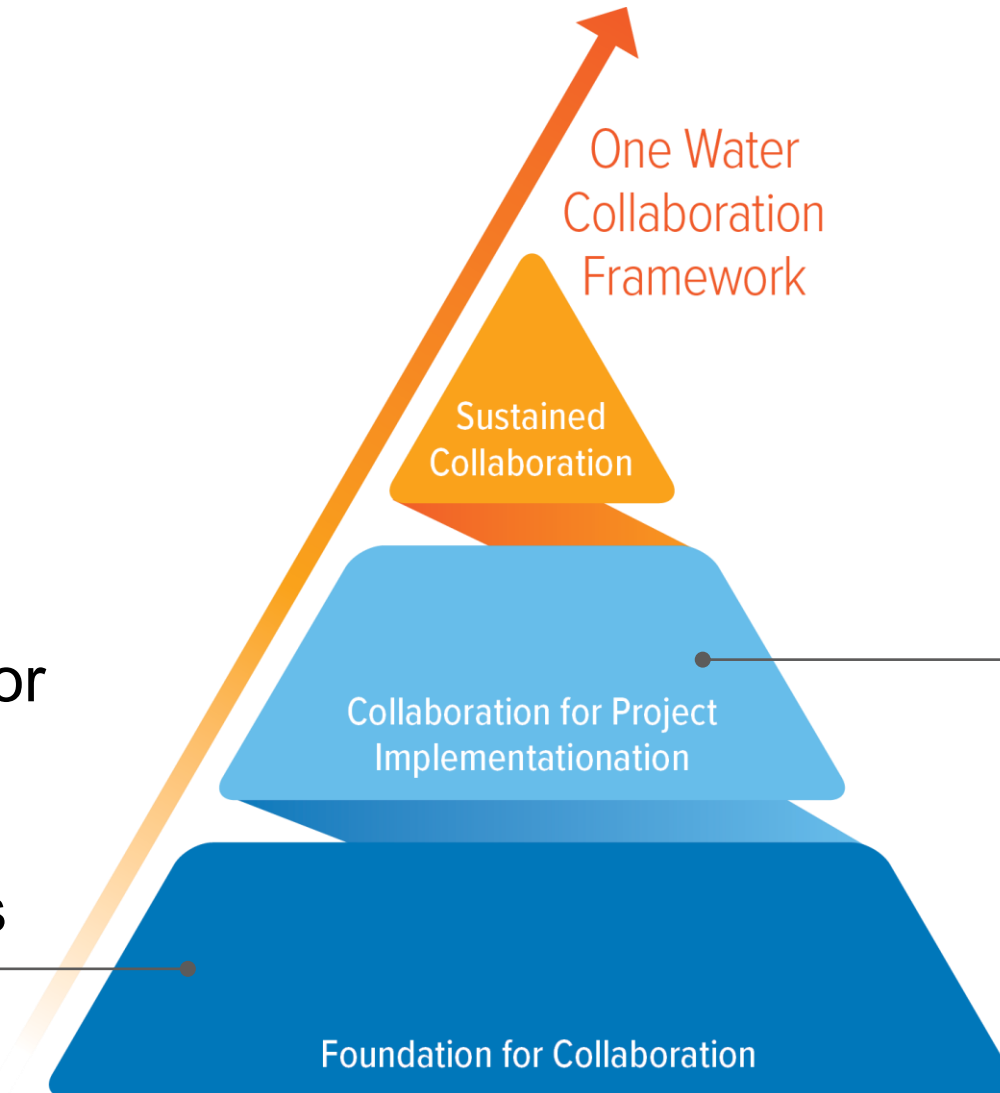
Purpose

The purpose of **One Water Honolulu Collaboration Framework** is to provide a clear and effective process of who should be working together and how to build resilience into the ongoing and planned projects, program, and policies related water management.

Collaboration Framework: Overview

Foundation for Collaboration

Sets the foundation for clear, effective, and easy to follow collaboration process

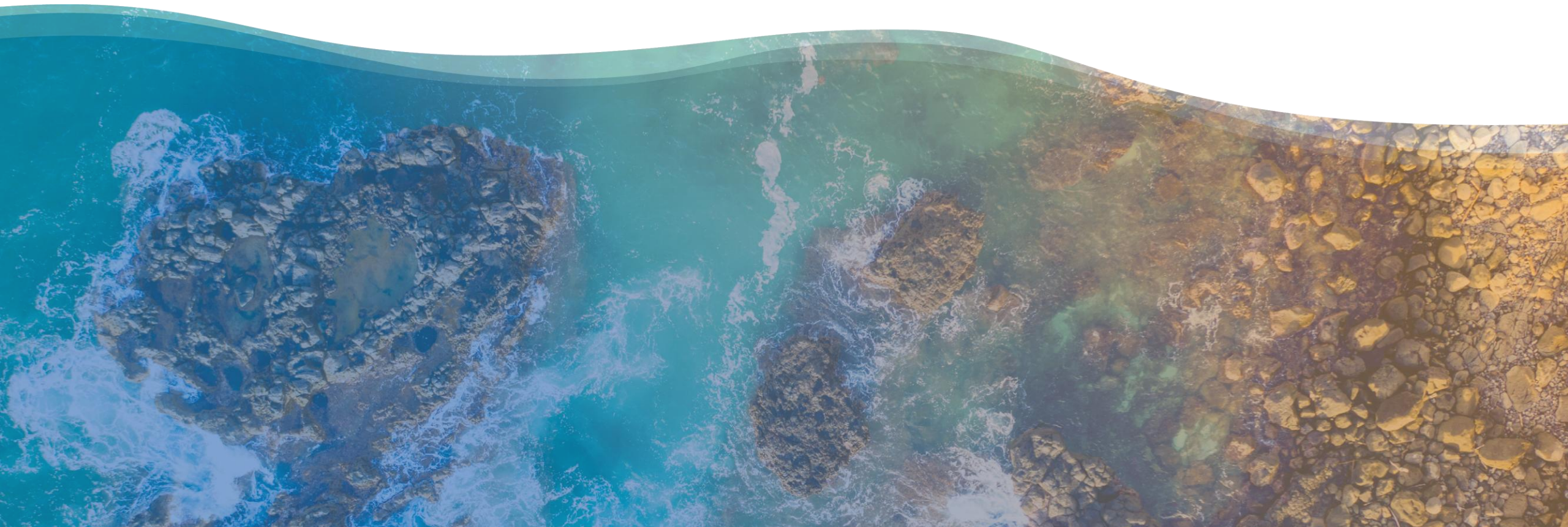


Collaboration for Project Implementation and Beyond

Formalizes a process to identify who is engaged, and when and how participation occurs


Collaboration Framework

Foundation for Collaboration



Foundation for Collaboration: Overview

Foundation for Collaboration sets the foundation for clear and effective collaboration and consists of:



Recognizing the value each stakeholder brings

Understanding how to collaborate to make and implement good decisions

Understanding barriers and opportunities for action

Providing key action and process recommendations for a path to success

Foundation for Collaboration: Stakeholders

Stakeholder Identification

Provides guidance for One Water Honolulu and its Collaboration Framework

CORE COLLABORATORS

City and County Departments
External Agencies
Labor/Trade Organizations
Academia
Environmental Organizations

BUSINESSES

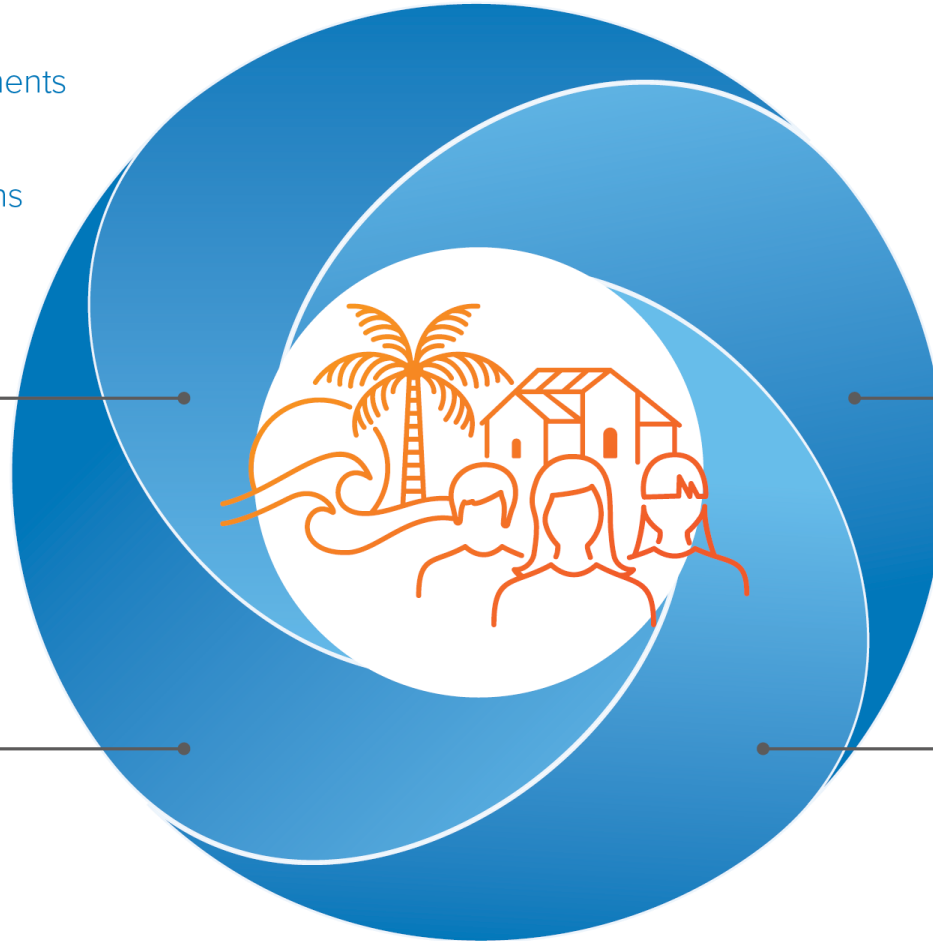
Tourism
Farmers/Agriculture
Business Organizations

COMMUNITIES

Frontline Communities
Cultural and Place Based Organizations
Neighborhood Boards and Community Organizations
Individuals

DEVELOPMENT COMMUNITY

Large Landowners
Consultants
Developers



Foundation for Collaboration: Stakeholders

Timely and meaningful engagement is important as One Water Honolulu progresses

Core Collaborators	External Agencies (federal, state, city, and private) Community Based Organizations Academia
Development Communities	Large Landowners Developers Consultants and Professional Organizations
Businesses	Tourism Farmers/Agriculture Business Organizations
Neighborhoods	Neighborhood Boards Frontline Communities Others

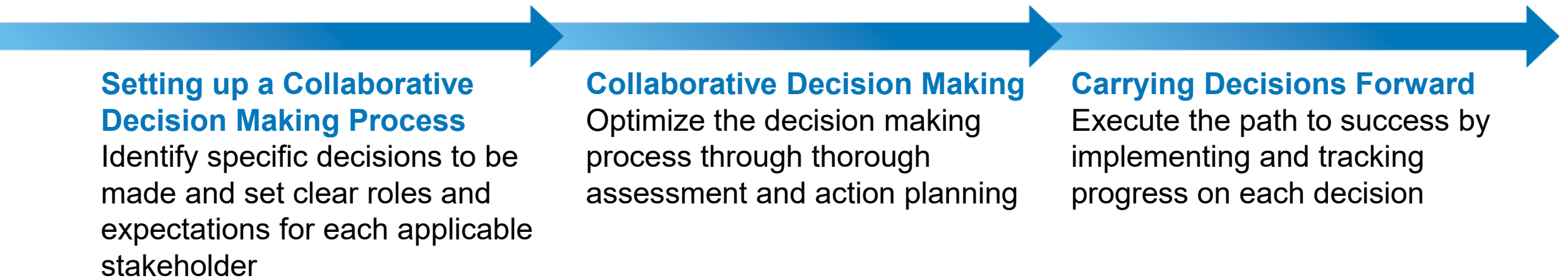
Foundation for Collaboration: Stakeholders

Takeaways from Past and Concurrent Community Outreach Efforts

- **Community Engagement and Empowerment**
- **Restoring and Protecting Ahupua'a Health**
- **Water Resources Stewardship**
- **Adapting to Climate Change**
- **Native Hawaiian Cultural Stewardship**
- **Responsible Water Use**
- **Affordability and Economic Prosperity**
- **Thriving Communities**

Foundation for Collaboration: Guidelines

A collaborative decision making process tool that provides opportunities for meaningful progress



Foundation for Collaboration: Barriers and Opportunities

Identified barriers resulted in recommended actions to strengthen alignment and collaboration

CIP Process Example Barriers:

BARRIERS	RECOMMENDED ACTIONS
Clarity is needed in applying “Climate Change, Sustainability and resiliency” tag to projects in individual department CIP processes	Formalize the enforcement and monitoring of the implementation of the City's Climate Change Design Guidelines (CCDG) (Mayor's Directive 25-03)
Need for a City-wide CIP database	Development of City-wide CIP tracking tool

INSTITUTIONAL BARRIERS

CIP Process

Funding and Resources

Development Community

Equity and Engagement

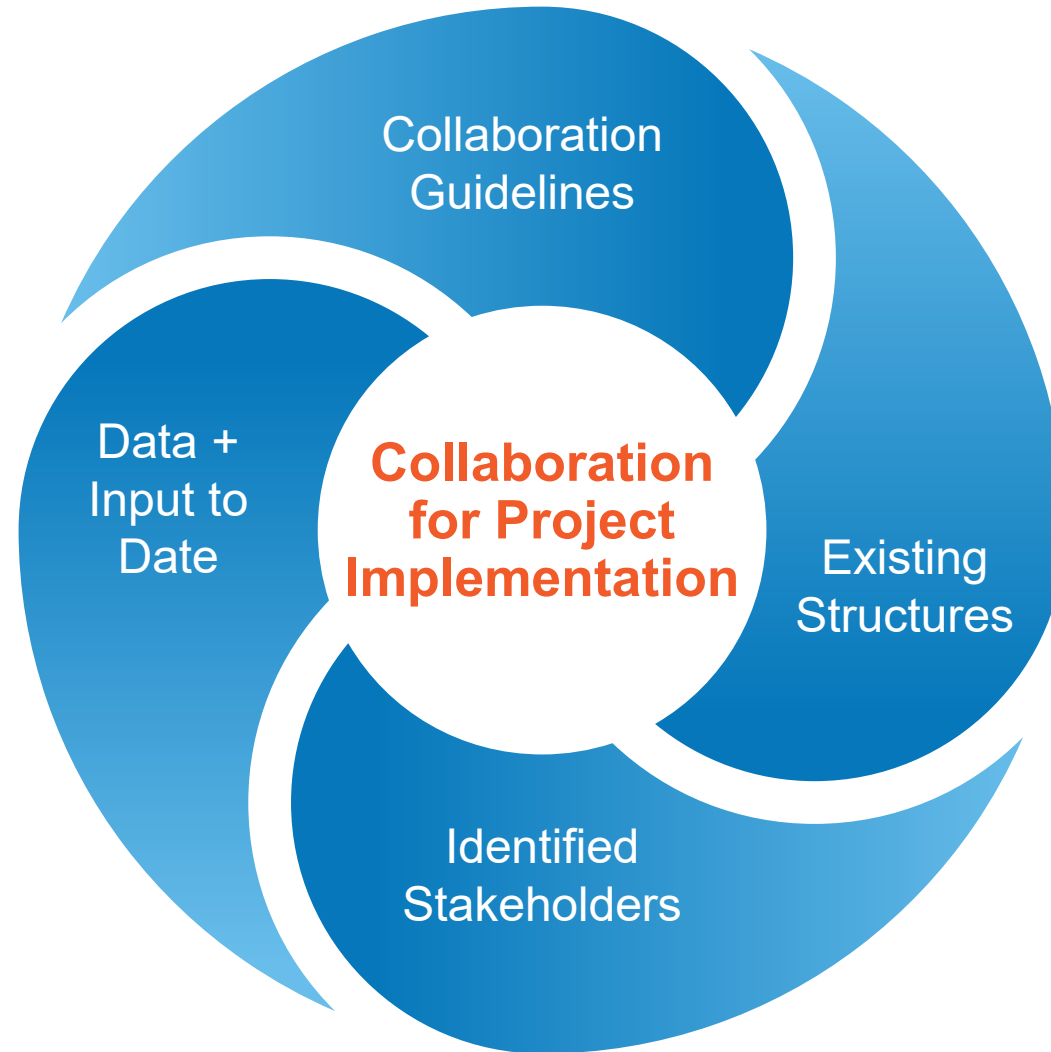
Policy and Alignment

Collaboration Framework

Collaboration for Project Implementation and Beyond



Collaboration for Project Implementation Incorporates



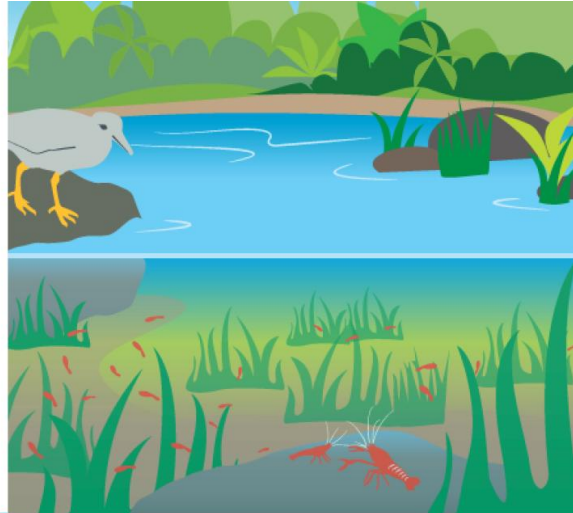
Collaboration for Project Implementation: Next Steps

Provide guidance to move through processes/workflows per type of project/program, helping to answer:

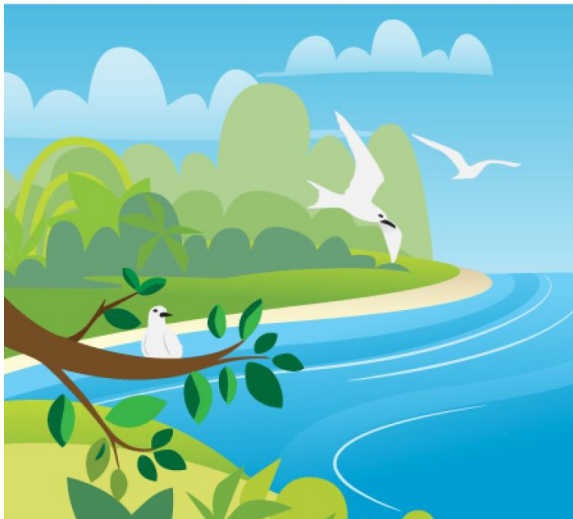
WHEN?	PLANNING	APPROVAL	IMPLEMENTATION	O&M
WHAT?	What decisions need to be made?	What work needs to be done?	What data/info is needed?	
WHO?	Who can be the lead/co-lead?	Who is involved? Who makes the decision(s)?	Who can be a collaborator?	
HOW?	What convenings/ interactions are needed?	How are data gaps addressed?	What existing structures can be leveraged?	

One Water Honolulu: Benefits

Water Supply
Water Quality
Watershed Health
Flood Protection



Streamlined Permitting
Cost Efficiencies
Improved Public/Private
Infrastructure Coordination
Cross-Sector Collaboration



Enabling Thriving
Communities
Community Partnerships
Job Creation



Nature-Based Solutions
Access of & Protection of
Public Trust Resources
Climate Resilient
Infrastructure
Integrated Land Use &
Resilience Planning

Mahalo

OneWaterHonolulu.org