

# **INNOVATIVE RENTAL SUPPLY**

## **RENTAL INVENTORY**

**(240) 539-0636**

**[ageisert@innovativerentalsupply.com](mailto:ageisert@innovativerentalsupply.com)**

# OUR VALUES



***Passion***

***Integrity***

***Dedication***

***Ingenuity***

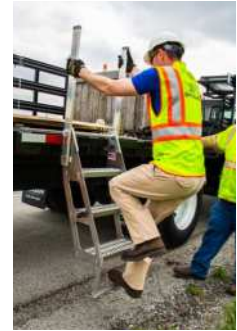
***Collaboration***

# EQUIPMENT RENTAL



## Various Fall Protection Anchors

3-man 360 Swivel, 1-person Non-penetrating, 4-person Non-penetrating, Door Jamb/Window Anchor, Beam Clamp, Parapet Clamp, Standing Seam, 4-person Horizontal Lifeline, EcoAnchor, etc.



## Delivery/Shipping Safety Systems

Suspended TruckBed Work Platform, TruckBed Access Ladder, Overhead Fall Arrest, etc.



## Interior Trades

DeskSurfer Lift Platform (145lbs with 14ft reach)  
Mobile Cutting Station  
(Noise reduction & dust/spark containment)

# EQUIPMENT RENTAL



## Custom Outrigger Netting

Designed to Protect Pedestrians and Workers Below



## Alsipercha/Alupercha Elevated Anchor Points

Steel/Aluminum Elevated Anchorage (360 degrees)  
Concrete, Steel, Weighted base, Fastened Tripod, etc.



## Standard/Custom Self-Adjusting Stairs

Custom Height and Width, Self-leveling



## Guardrail Systems

Non-Penetrating, Parapet Clamp, Slab Grab,  
Web Rail, etc

# EQUIPMENT RENTAL



## Confined Space Equipment

Entry Tripod, Entry Davit, Confined Space Blower w/ duct, Confined Space Ladder, Manhole Guardrail, Harness, etc.

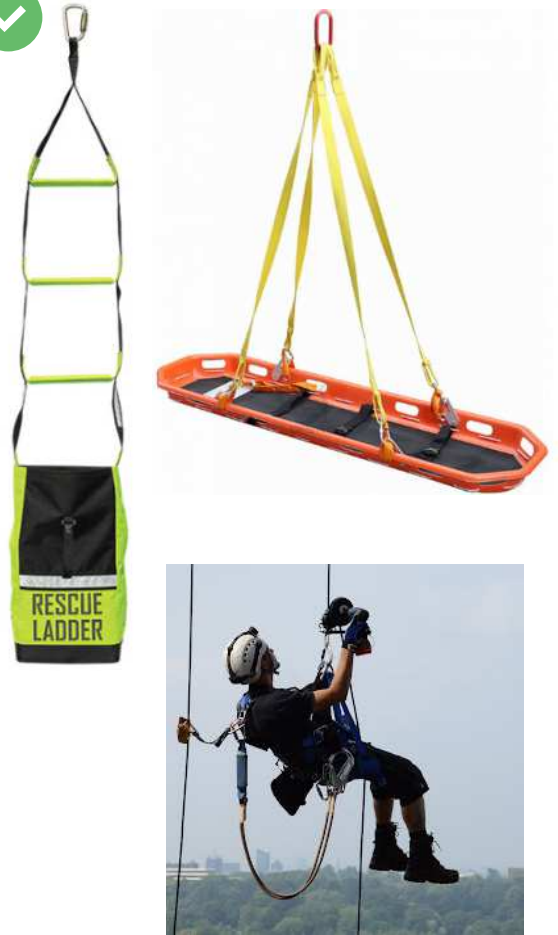
---



## Air Monitoring/Testing

Multi Gas Meter, Multi Gas meter w/ PID (VOCs), Sprint Pro Analyzer (flue gas analyzer)

---



## Rescue Devices

Rescue Ladder, Rescue Crane Basket, Rescue & Descent Kit, etc.

---



## Heat Stress Prevention

Power Breezer mobile atomized evaporative cooler

---

# INNOVATIVE RENTAL SUPPLY

CONTACT US TO LEARN MORE

(240) 539-0636

[ageisert@innovativerentalsupply.com](mailto:ageisert@innovativerentalsupply.com)

CONNECT WITH US

