

TIE DOWN

MANUFACTURING INGENUITY



**INNOVATIVE
RENTAL SUPPLY**

TIE DOWN

MANUFACTURING INGENUITY

A renowned engineering and manufacturing company located in Atlanta, GA, Tie Down is known for our exceptional capabilities in handling large and intricate projects. Our dedication to an engineering-first approach and consistent investments in cutting-edge technology has positioned us as a global leader in our field.

Under the guidance of our founder, Chuck MacKarvich, we have achieved remarkable success, boasting an impressive portfolio of over 96 patents and a wide range of 7,000 products utilized globally. Since our establishment in 1969, Tie Down has maintained an unwavering commitment to excellence and unparalleled customer service. Over the course of more than 55 years, our foundation has remained strong, enabling us to meet and exceed the expectations of our valued clientele consistently.

At Tie Down, safety is not just a value; it's a commitment. We dedicate ourselves to the innovation of OSHA-compliant products, ensuring the highest level of safety for both you and your workers. Our safety division specializes in both active and passive fall protection, encompassing a comprehensive range of products. Every product within this division is crafted to provide assurance, safeguarding not only your project but, more importantly, the well-being of you and your workers.

MOBILE CARTS

PX 5 Sentinel.....	6
PX 5 Original	7
PX 5 Rescue Winch	8
PX 3.....	9
PX 3 Rescue Winch	10
Squatch	11
Horizontal Lifeline Kit	12
Big Foot	13
Adjustable Cart.....	14
Standard Material Cart.....	14
Standard Material Cart Deck Plate.....	14

PASSIVE FALL PROTECTION

WebRail	17
WebRail Balcony Post.....	18
WebRail Wall Mount Bracket.....	18
Universal Guardrail.....	19
Universal Compression Clamp Guardrail Base	20
Socket Guardrail Base	20
Zip Base Dolly	20
Stack Pallets.....	21
Guardrail Material Cart.....	21
Juggernaut & Juggernaut Lite	22
Universal Gate.....	23
Wheeled Adjustable Guardrail Gate And Latch Kit	23
Adjustable Toeboards.....	24
Ladder Guardrail Corral	24
Zip Rail Pipe Fittings	25
“D” Return Guardrail.....	27
Standing Seam Guardrail Assembly	27
Zip Rail Kits	28
Safety Guard Kit.....	29
Parapet Wall and Universal Guardrail System.....	29
Zip Warning Line Cart	30
Folding Warning Line System.....	31
Tri-Leg Folding Warning Line	31
Safe-T-Zone Permanent Warning Line System.....	32
Men Working Above 60 ft. Flags	33
Plain Yellow Pennant 105 ft.....	33
Red Pennant 105 ft.....	33
Metal Flags 100 ft.....	33

ROOF HATCH SAFETY

Hatch Mate	35
Hatch Railing	36
Hatch Ladder Safety Post	36

SKYLIGHT SAFETY

Sky Screens	38
Skylight Netting	38

STAIR SYSTEMS

Super Steps.....	40
Crossover Bridge.....	41
Crossover Toeboard.....	41
Crossover Order Form	42
Ladder Safety Dock.....	43
Commercial Ladder Dock.....	43

ANCHORS

Commercial Roof Anchors	45
Hippo Anchor.....	46
4 Way Roof Anchor	46
Two Way Standing Seam Roof Anchor	47
Parapet Roof Anchor.....	47
Door Jamb Anchor	47

WAREHOUSE SOLUTIONS

Pallet Carrier	49
Breezethru Work Platform.....	49
Work Platform Toolbox	49

RESIDENTIAL SAFETY

TranzVolt.....	51
Utility Tray.....	53
Track Section Stand Off	53
Step-N-Safe Ladder Extension	54
Step-N-Safe Gate	54
Corner Ladder Stabilizer	54
Ladder Stand Off.....	55
Ladder Safety Legs	55
Ladder Roof Hooks	55
Residential Ladder Dock.....	56
Ladder Stability Anchor.....	56
HitchClip	57
Double D Ring Roof Anchor	57
Steep Slope Guardrail.....	58
Rake Edge Bracket.....	58



TIE DOWN
MANUFACTURING INGENUITY

SAFETY DIVISION
MOBILE CARTS

MOBILE CARTS

Tie Down's Mobile Carts place an emphasis on the importance of portability on a job site. Whether mobile fall protection systems or material carts, these products ensure ease of transportation while remaining durable and reliable in their purpose.

MOBILE FALL PROTECTION

Our mobile fall protection systems offer a solution for both fall arrest and fall restraint situations. By containing mobile parts, remaining dynamic, and needing the active participation of workers, these active systems keep workers safe while still remaining lightweight and easily portable around the job site.



ROOF MATERIAL CARTS

Engineered to overcome various terrains, our material carts empower workers to effortlessly transport materials across the job site, ensuring efficient and smooth operations.



MOBILE CARTS

PENETRATING MOBILE FALL PROTECTION

PX5 SENTINEL

Shipped fully prepared for operation, the PX5 Sentinel safeguards up to seven workers, five in fall arrest and two in restraint. The PX5 Sentinel is versatile across concrete, EPDM, and TPO roofing applications. When relocation becomes necessary, our high-quality flat-free tires ensure swift and easy movement.

- Maximum worker capacity: up to 7 workers at a time
- Job site ready: ships job site ready from USA facilities
- Portability feature: vertical lifting rings
- Versatile use: for use on concrete, build-up, TPO, ISO, PVC, & EPDM
- Additional features: front locking tow handle, rolled goods rack, forklift pockets, and 500 lbs. flat-free tires



5
FALL
ARREST

+



2
FALL
RESTRAINT

=

7
TOTAL
USERS



PENETRATING
SPIKES

Part ID: 72833

COMPLIANCE: OSHA 1910.140 & 1926.502

Key Features

- Five steel spikes for roof penetration
- Fire extinguisher holder
- Material box with locking door, weather strip, and heavy-duty hinge
- Optional rescue winch with 100 ft. of galvanized lifeline



MOBILE CARTS

PENETRATING MOBILE FALL PROTECTION

PX5 ORIGINAL

Our groundbreaking PX5 ensures the security of up to seven workers, five in fall arrest and two in fall restraint, simultaneously. Engineered with precision, the PX5's 1st and 5th tie-off points are angled at 45 degrees, making it the sole system on the market tested at such an angle.

- Maximum worker capacity: up to 7 workers at a time
- Lightweight and portable: weighs 517 lbs.
- Job site ready: ships job site ready from USA facilities
- Versatile use: for use on built-up, TPO, ISO, PVC, & EPDM
- Enhanced features: front and rear braking, premium 500 lbs. flat-free tires, and forklift pockets



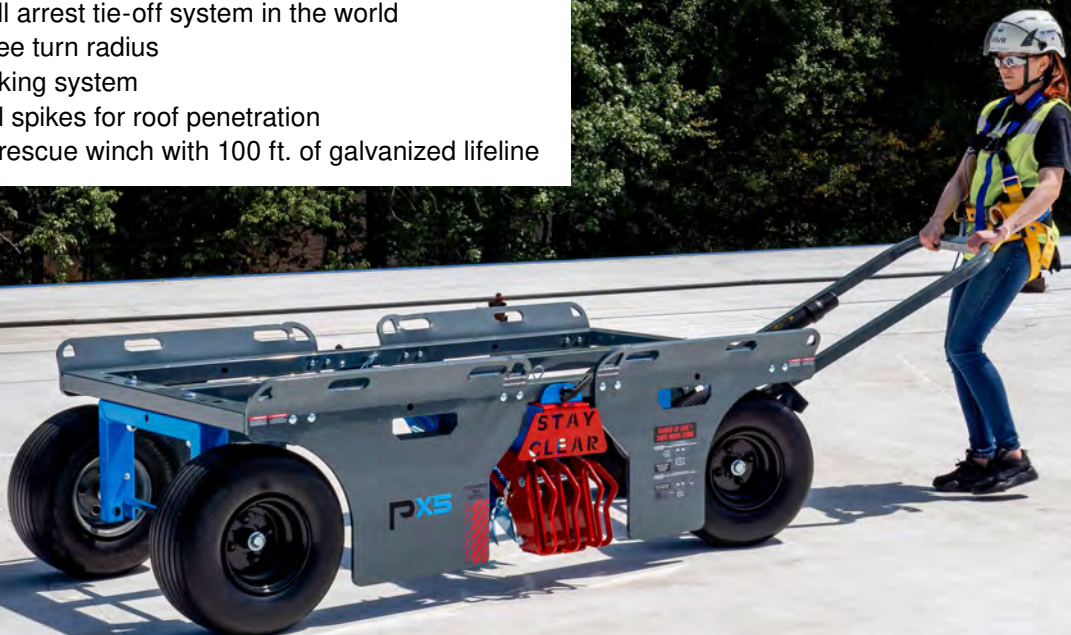
PENETRATING SPIKES

Part ID: 72838

COMPLIANCE: OSHA 1910.140 & 1926.502

Key Features

- Only 5 fall arrest tie-off system in the world
- 180 degree turn radius
- Front braking system
- Five steel spikes for roof penetration
- Optional rescue winch with 100 ft. of galvanized lifeline



MOBILE CARTS

PENETRATING MOBILE FALL PROTECTION

PX5 RESCUE WINCH

Intended to be seamlessly integrated with the PX5, the Rescue Winch serves as a vital tool in mobile fall protection systems, providing a reliable means to retrieve a fallen worker and bring them to a place of safety by encompassing both fall protection and a rescue plan. Equipped with a robust 100 ft. galvanized lifeline, its adaptable design enables the safe lowering or raising of a worker to a secure location with its manual winch, mitigating potential hazards swiftly and effectively.

- Secure worker rescue: manual winch enables reliable lifting or lowering of the worker
- Ample lifeline length: equipped with 100 ft. of galvanized lifeline
- Seamless integration: designed to quickly and easily attach to the PX5



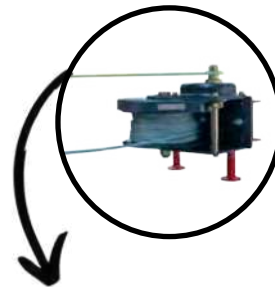
100 FEET
LIFELINE



QUICK
INSTALL



ATTACHES TO
PX5



RESCUE
WINCH

Part ID: 72831

COMPLIANCE: OSHA 1926.502

Key Features

- Designed for the PX5
- Comes in carrying bag
- Features folding handle
- Includes 100 ft. galvanized cable
- Swivel snaphook with impact indicator
- Product weight: 25 lbs.



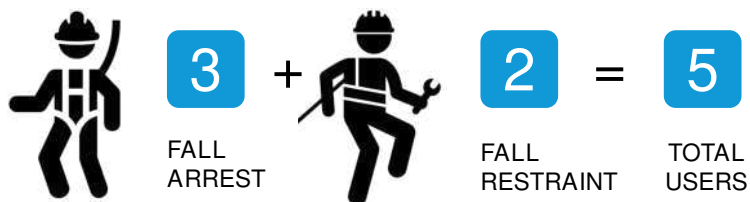
MOBILE CARTS

PENETRATING MOBILE FALL PROTECTION

PX3

The PX3 offers unparalleled portability while being 45% lighter and featuring a smaller footprint than others on the market. Handling up to five workers at a time, three in fall arrest and two in fall restraint, the PX3 lifts into place, allowing the users to quickly click off and get to work.

- Maximum worker capacity: up to 5 workers at a time
- Unmatched portability: weighs only 430 lbs.
- Quick setup and relocation: ships job site ready from USA facilities
- Versatile use: for use on TPO, EPDM, metal & built-up roofing
- Additional features: flat-free 300 lbs. tires, four lifting rings, and locking toolbox



PENETRATING SPIKES

Part ID: 72810

COMPLIANCE: OSHA 1910.140 & 1926.502

Key Features

- Standard locking toolbox
- Retractable handles
- Five steel spikes for roof penetration
- Optional rescue winch with 100 ft. of galvanized lifeline



TIE DOWN
MANUFACTURING INGENUITY

MOBILE CARTS

PENETRATING MOBILE FALL PROTECTION

PX3 RESCUE WINCH

Intended to be seamlessly integrated with the PX3, the Rescue Winch serves as a vital tool in mobile fall protection systems, providing a reliable means to retrieve a fallen worker and bring them to a place of safety by encompassing both fall protection and a rescue plan. Equipped with a robust 100 ft. galvanized lifeline, its adaptable design enables the safe lowering or raising of a worker to a secure location with its manual winch, mitigating potential hazards swiftly and effectively.

- Secure worker rescue: manual winch enables reliable lifting or lowering of the worker
- Ample lifeline length: equipped with 100 ft. of galvanized lifeline
- Seamless integration: designed to quickly and easily attach to the PX3



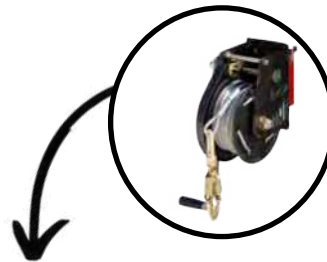
100 FEET
LIFELINE



QUICK
INSTALL



ATTACHES TO
PX3



RESCUE
WINCH

Part ID: 72819

COMPLIANCE: OSHA 1910.140 & 1926.502

Key Features

- Designed for the PX3
- Comes in carrying bag
- Features folding handle
- Includes 100 ft. galvanized cable
- Swivel snaphook with impact indicator
- Product weight: 25 lbs.



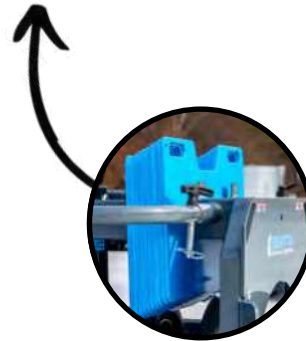
MOBILE CARTS

NON-PENETRATING MOBILE FALL PROTECTION

SQUATCH

Squatch's innovative and patented design protects up to four workers, two in fall arrest and two in fall restraint. Its enhanced design allows for a 100 ft. Horizontal Life-line application, which protects up to seven workers at a time, three in fall arrest and four in restraint.

- Comprehensive safety: up to 4 workers at a time
- Multi-surface versatility: for use on Concrete, TPO, & EPDM
- Robust durability: weighs 1200 lbs.
- Job site ready: ships job site ready from USA facilities
- Additional safety features: premium 300 lbs. flat-free tires, four lifting rings for rigging, and optional horizontal lifeline system



NON-PENETRATING DESIGN

Part ID: 61010

COMPLIANCE: OSHA 1910.140 & 1926.502

Key Features

- Non-penetrating design
- Features four hoist rings
- Optional horizontal lifeline system



TIE DOWN
MANUFACTURING INGENUITY



MOBILE CARTS

NON-PENETRATING MOBILE FALL PROTECTION

HORIZONTAL LIFELINE SYSTEM

The Horizontal Lifeline System provides reliable support for up to 3 workers in fall arrest while still utilizing fall restraint on the Squatch. Designed for use with 2 Squatch units, the HLL kit allows for seamless integration of up to 100 ft. of leading edge protection to ensure tailored fall protection for your specific work environment.

- Comprehensive safety: up to 3 workers at a time
- Ease of use: designed for use with 2 Squatch units
- Seamless integration: provides up to 100 ft. of leading edge protection



3

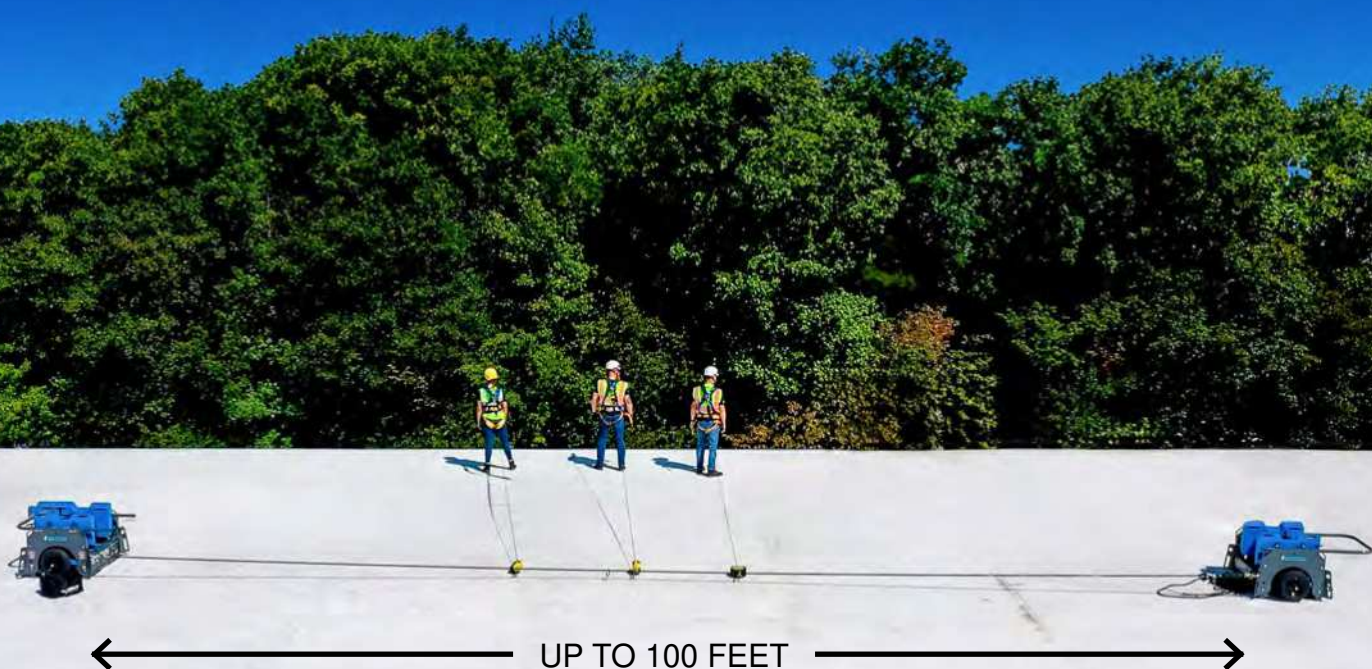
FALL
ARREST



CONNECTS
TO SQUATCH

Part ID: 14405

COMPLIANCE: OSHA 1910.66, 1926.502 & ANSI Z359.1



MOBILE CARTS

NON-PENETRATING MOBILE FALL PROTECTION

BIG FOOT

Designed to support three users with one in fall arrest and two in fall restraint, Big Foot weighs nearly half as much as Squatch. With enhanced mobility, this robust system allows for effortless lifting and relocation as needed.

- Comprehensive safety: up to 3 workers at a time
- Lightweight advantage: 750 lbs. in the USA and 1,000 lbs. in Canada
- Multi-surface versatility: for use on concrete, TPO, & EPDM
- Global compatibility: available in USA and Canada
- Job site ready: ships job site ready from USA facilities
- Additional features: four lifting rings for rigging, jacking system, and metal plate printed instructions



NON-PENETRATING DESIGN



Part ID: 60060US

Canada Part ID: 60060CAN

COMPLIANCE: OSHA 1910.140 & 1926.502

Key Features

- Non-penetrating design
- Features four hoist rings
- Jacking feature
- Instructions printed on a metal plate with QR code



TIE DOWN
MANUFACTURING INGENUITY

MOBILE CARTS

MATERIAL CARTS

ADJUSTABLE CART

Our heavy-duty Adjustable Materials Cart's fully steel frame ensures durability. By providing ample support for your materials, this adaptable cart enhances maneuverability around your job site.

- 36 in. width, 2 in. channel frame, 22 in. deck height
- Adjustable length from 5 ft. to 8 ft.
- Features a drop brake with a "T" handle
- 2000 lbs. capacity
- Flat-free 18 x 8.50 tires
- Includes corner slots for rolled goods tubes and rear carriage bolt for multi-cart towing

Part ID: 73056



STANDARD MATERIAL CART

This robust and versatile base frame is designed to streamline material transport on the job site. It ensures stability and durability on various terrains while remaining easy to maneuver and secure materials during transportation. This cart combines strength and functionality to meet the demands of demanding job sites, providing a dependable solution for efficient material handling.

- Weighs 119 lbs.
- Impressive weight capacity of 2000 lbs.
- Equipped with four flat-free tires
- Features a front brake tow handle for extra control

Part ID: 72827



STANDARD MATERIAL CART DECK PLATES

These aluminum deck plates sit on top of the cart to create a flat surface.

Part ID: 72837



TIE DOWN
MANUFACTURING INGENUITY

SAFETY DIVISION
PASSIVE FALL PROTECTION

PASSIVE FALL PROTECTION

PASSIVE FALL PROTECTION

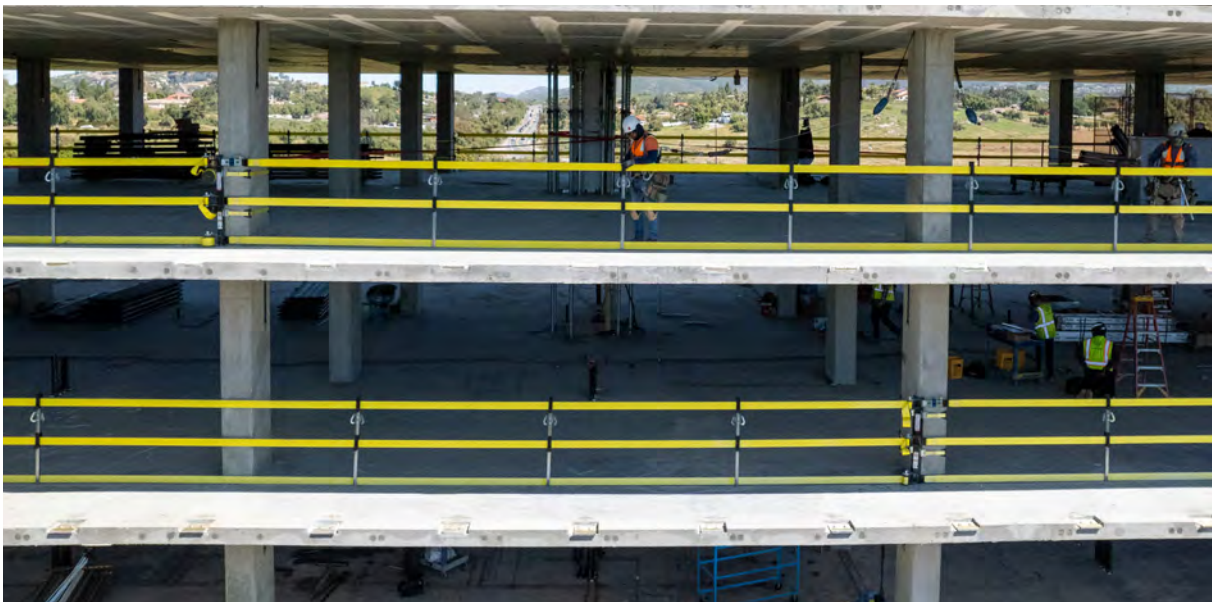
Passive fall protection proves highly effective in situations where rooftop penetration isn't feasible, and significant hazards, like leading edges, skylights, and roof hatches, exist. While implementing passive fall protection may involve higher initial costs compared to personal protective equipment, the long-term benefits are substantial.



Passive systems offer increased safety levels, reduced training expenses, and a decreased need for consumable supplies. If your work regularly requires access to elevated areas, passive fall protection is a recommended choice.

Examples of passive fall protection systems include:

- universal guardrails
- warning lines
- constructed guardrails
- tensioned guardrails



PASSIVE FALL PROTECTION

TENSIONED GUARDRAIL

WEBRAIL

PORTABLE FALL ARREST & TENSIONED GUARDRAIL

Through the use of our patented technology, the WebRail kit is a revolutionary non-penetrating fall protection solution that simultaneously provides both fall arrest and passive protection. Attaching to the WebRail vertical fall arrest support as opposed to the building column prevents workers from a collision with the floor or column in the event of a fall.

- Up to four users in fall arrest per single span of webbing
- Top, mid, and toe webbing rated at an impressive 20,000 lbs.
- Exceeds OSHA 1926 and 1910 requirements
- Features fire retardant, UV, and chafe-resistant 4 in. webbing
- Accommodates round and square columns
- Made for use with a lanyard or SRL vertical fall protection lifeline



INCLUDES TOP RAIL
COMPRESSION INDICATOR TO
ENSURE OSHA COMPLIANCE
OF 200 LB. LOAD

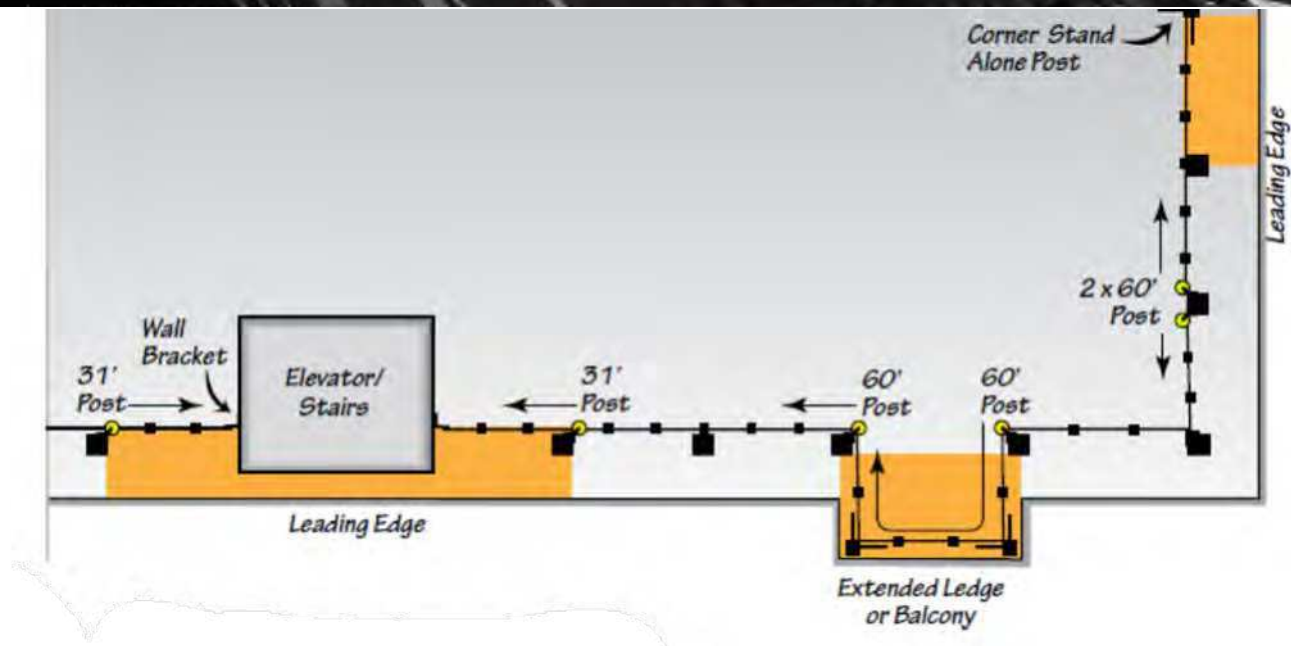
30 ft. stack pallet Part ID: 72893
60 ft. stack pallet Part ID: 73073

COMPLIANCE: OSHA 1910.29, 1910.140 & 1926.502



PASSIVE FALL PROTECTION

TENSIONED GUARDRAIL



WEBRAIL BALCONY POST

This post can be securely fastened to the concrete slab or decking that allows webbing to pass through for balcony applications.

- Intended to either act as a corner post or end post for WebRail webbing
- Three optional installation methods as either a concrete anchor set, single brace anchor set, or terminating/end post set
- Required mounting hardware (not included) differs for each installation method

Part ID: 73075



WEBRAIL WALL MOUNT BRACKET

This bracket can be securely attached to a shear wall at a construction site to conclude the run of a railing.

- Designed to act as another means of a corner post to terminate the webbing
- Quick and easy fastening with concrete screw anchors

Part ID: 73076



PASSIVE FALL PROTECTION

GUARDRAIL

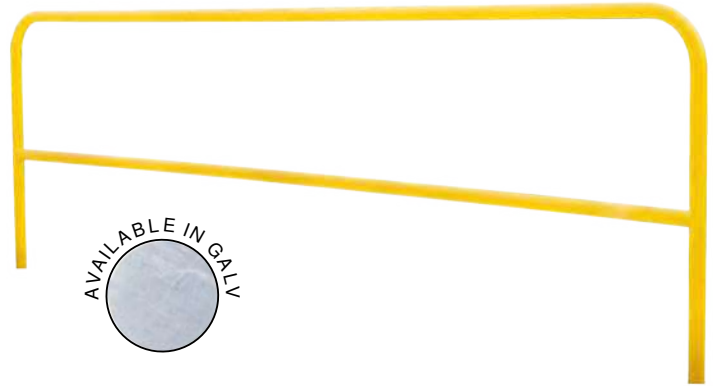
UNIVERSAL GUARDRAIL

Designed to provide a better alternative to active fall protection systems, the Universal Guardrail provides exceptional freedom of movement, allowing workers to perform their tasks without hindrance. Unlike active fall protection systems that require harnesses and lanyards, this guardrail system doesn't restrict movement or interfere with the job at hand.

- Fits over 95% of competitor bases
- Weighs 40% less than most competitors at 33 lbs.
- Fits up to 2/12 pitch and multi-directional
- Available in powder-coated yellow and galvanized finishes or custom colors (upon request)
- Quick installation
- Features multi-pin slot for easy adjustment and compatibility

Finish	Length	Part ID
Yellow	10 ft.	70758
	7.5 ft.	70759
	5 ft.	70760
Galvanized	10 ft.	70764
	7.5 ft.	70765
	5 ft.	70766

*Custom colors available upon request.
Additional charges may apply.



COMPLIANCE: OSHA 1910.29 & 1926.502

Style	Length	Yellow Part ID	Galv. Part ID
Adjustable	8 ft. - 10 ft.	70852	70852G
	5.5 ft. - 7.5 ft.	70851	70851G
	3.5 ft. - 5 ft.	70850	70850G



PASSIVE FALL PROTECTION

GUARDRAIL BASES

UNIVERSAL COMPRESSION CLAMP GUARDRAIL BASE

The Universal Compression Clamp (UCC) Base integrates with more than 95% of competitor upright guardrails. Installed with the ease of an impact gun, eliminating the need for pins, this innovative base ensures a secure and wobble-free system. Featuring no loose parts, this base is sturdier than any other on the market.

- Lightest guardrail base at 58 lbs.
- Designed to accommodate both 1.66 and 1.90 OD tubes
- Features toe-board slots, protective rubber footing, carrying hand hold slot, and more



Yellow Part ID: 71091
Galvanized Part ID: 71091G



LIGHTWEIGHT



WOBBLE-FREE



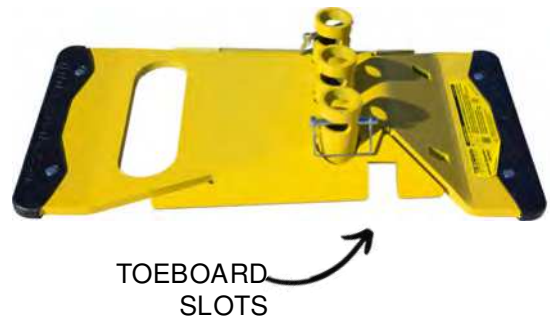
UNIVERSAL FIT

COMPLIANCE: OSHA 1910.29, 1926.502 & CSA Z259

SOCKET GUARDRAIL BASE

The Socket Base stands as the ultimate free-standing fall protection system, requiring no roof substrate penetration. It facilitates safer lifting, reducing the risk of injuries on job sites. Intended for temporary or permanent applications, the added convenience allows a single person to comfortably carry the base.

- Weighs 58 lbs.
- No drilling or tools required for installation
- Features toe-board slots, protective rubber footing, carrying hand hold slot, and more



Yellow Part ID: 71094
Galvanized Part ID: 71094G



LIGHTWEIGHT

COMPLIANCE: OSHA 1910.29, 1926.502

ZIP BASE DOLLY

The Zip Base Dolly is your dependable companion for handling Universal Guardrail Bases. This dolly effortlessly glides across various terrains. Its compact and lightweight design ensures easy transport and convenient storage.

- Equipped with top-quality flat-free tires
- Allows you to transport up to 2 bases at a time
- Weighs 61 lbs.
- Features an ergonomic handle

Part ID: 70767



COMPLIANCE: OSHA 1910.29, 1926.502 & CSA Z259

PASSIVE FALL PROTECTION

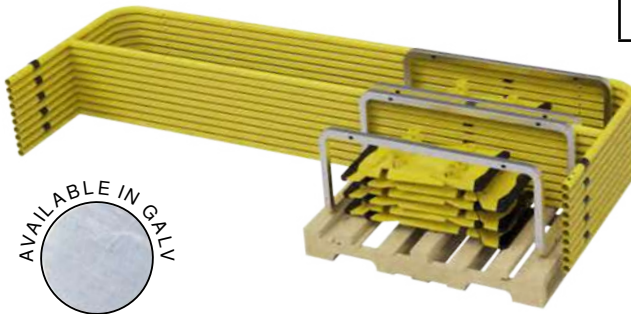
GUARDRAIL

STACK PALLETS

With its ability to stack perfectly for either side loading of a flatbed or end loading for a closed trailer, the Stack Rack's metal frame allows three bundles of guardrails to be stacked for utmost convenience, allowing you to ship more linear feet per truckload than any other guardrail system.

- Available with either Universal Compression Clamp (UCC) or Socket Base
- Holds 11 Universal Guardrails and 12 bases on a reinforced metal rack
- Includes up to 110 linear feet of guardrail protection
- Stack 11 guardrails and 12 bases at a time
- Suitable on roofs with pitches of up to 2/12
- Available in powder-coated yellow and galvanized finishes or custom colors (upon request)

Guardrail Stack Pallets			
Base	Length	Yellow Part ID	Galv. Part ID
UCC	10 ft.	71762	71783
	7.5 ft.	71782	71784
	5 ft.	71792	71792G
Socket	10 ft.	70762	70783
	7.5 ft.	70782	70782G
	5 ft.	70792	70792G



COMPLIANCE: OSHA 1910.29, 1926.502

*Custom colors available upon request.
Additional charges may apply.

GUARDRAIL MATERIAL CART

Designed to easily transport Universal Guardrails with bases and other various roofing materials across construction sites or rooftops, this cart ensures the safe and efficient movement of guardrails across the rooftop.

- Transports up to 110 ft. of Universal Guardrail
- Features include an 11-gauge steel tube handle, a sturdy 30 in. x 70 in. frame, 18 in. heavy-duty flat-free tires, a dead-man brake, and an anti-turning pin
- Flat-free tires with 500 lbs. capacity
- High-strength steel frame with impressive 2,000 lbs capacity



Complete Kit Part ID: 65049
Bracket Kit Part ID: 70834



PASSIVE FALL PROTECTION

GUARDRAIL

JUGGERNAUT

Tie Down's Juggernaut is a heavy-duty steel mobile guardrail cart capable of storing up to 220 linear feet of Universal Guardrail.

- Stores up to 220 linear feet of Universal Guardrail
- Double-stacking capability
- Available in two finishes: Yellow Plasticcoat and Galvanized
- Includes forklift pockets on both ends and lifting rings that enable lifting with a crane

Standard Yellow	
Includes	Part ID
Cart Assembly	70794*
22 - 10 ft. Guardrails 23 Quick Set Bases	70894*
22 - 10 ft. Guardrails 23 Socket Bases	70895*
22 - 10 ft. Guardrails 23 Quick Set and 23 Socket Bases	70896*
22 - 10 ft. Guardrails 23 UCC Bases	70899*

*C = With Casters *G = Galvanized *GC = Galvanized With Casters



COMPLIANCE: OSHA 1910.29 & 1926.502



JUGGERNAUT LITE

This mobile guardrail cart features a heavy-duty transport pallet capable of storing up to 200 linear feet of Universal Guardrail.

- Stores up to 200 linear feet of Universal Guardrail
- 20 Rails, 21 Bases
- Double-stacking capability
- Available in two finishes: Yellow Plasticcoat and Galvanized
- Includes forklift pockets on both ends and lifting rings that enable lifting with a crane

Includes	Yellow Part ID	Galvanized Part ID
Stack pallet kit for socket base	73053Y	73053G
Stack pallet kit for UCC base	73054Y	73054G



COMPLIANCE: OSHA 1910.29 & 1926.502

PASSIVE FALL PROTECTION

GUARDRAIL

ADJUSTABLE GUARDRAIL GATE KIT

Our Adjustable Guardrail Gate Kit is your reliable solution for rooftop safety. Engineered to deliver robust fall protection, this kit is ideal for workers operating near roof edges.

- Features self-closing mechanism
- Built to fit universal guardrails ranging from 1-½ to 2 in. in round and square shapes
- Small gate adjusts from 24 in. to 36 in.
- Large gate adjusts from 35 in. to 48 in.
- Intended for application on flat, level roofs with a maximum pitch of ½ in. per foot

Yellow Small Gate Part ID: 72953

Galvanized Small Gate Part ID: 72953G

Yellow Large Gate Part ID: 72943

Galvanized Large Gate Part ID: 72943G



COMPLIANCE: OSHA 1910.29, 1926.502

WHEELED ADJUSTABLE GUARDRAIL GATE AND LATCH KIT

This Wheeled Guardrail Gate and Latch Kit is the lightweight and portable solution to enhance rooftop safety. It offers an affordable and highly versatile option for your job site, effectively protecting access points like roof hatches, skylights, fire vents, or floor doors.

- Constructed from durable steel
- Weighs only 42 lbs.
- Easily bolts and mounts onto round or square guardrail tubes
- Has an adjustable length range from 70 in. to 85 in.
- Features self-closing mechanism

Yellow Part ID: 70908

Galvanized Part ID: 70908G



COMPLIANCE: OSHA 1910.29, 1926.502

PASSIVE FALL PROTECTION

GUARDRAIL ACCESSORIES

ADJUSTABLE TOEBOARDS

The Guardrail Toeboard Kit offers an affordable solution for keeping tools and other objects from rolling off to lower levels. When people work in the vicinity of an unprotected or leading edge, the risk of kicking items off of the roof or elevated platform is heightened. The OSHA toeboard requirements include incorporating them when employees on lower levels could be exposed to falling objects.

- Withstands 50 lbs. of force
- Quick installation
- Elevates appearance of toeboards
- Maintenance-free application

Yellow 4-7.5 ft. Part ID: 73065

Galvanized 4-7.5 ft. Part ID: 73065G

Yellow 7.5-10 ft. Part ID: 73064

Galvanized 7.5-10 ft. Part ID: 73064G



COMPLIANCE: OSHA 1917.112

LADDER GUARDRAIL CORRAL

Designed for fixed ladder access, this ladder guard system ensures the safety of ladder users by providing a protected and enclosed high-visibility barrier when climbing onto the roof and passing through swing gates. The clamp-on system attaches to the ladder's vertical rails and extends either 7.5 or 15 ft. onto the roof, creating a barrier between the worker and the roof edge during ladder area entry or exit.

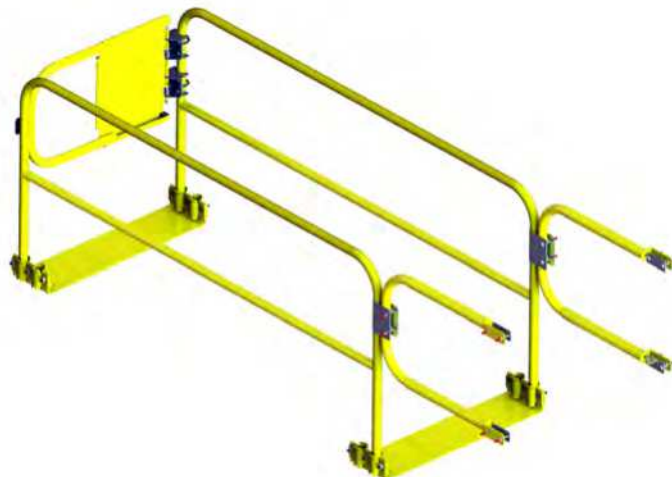
- No need for mechanical attachment to the roof
- Adjustable ladder spanner brackets extend the system's reach onto the roof by over 40 in.

Yellow 7.5 ft. Part ID: 72883

Galvanized 7.5 ft. Part ID: 72883G

Yellow 15 ft. Part ID: 72884

Galvanized 15 ft. Part ID: 72884G



COMPLIANCE: OSHA 1910.29 & 1926.502

PASSIVE FALL PROTECTION

RAIL FITTINGS

ZIP RAIL PIPE FITTINGS

When combined with our galvanized or powder-coated rail sections, these Zip Rail Pipe Fittings form a sturdy safety solution. Intended to be used as a permanent railing solution for stairs, slopes, and raised surfaces, these OSHA-compliant pipe fittings can be integrated to construct the perfect modular installation for any application. With a modular design, our Zip Rail Pipe Fittings offer users flexibility in creating interior or exterior guardrail systems.

- Made from durable cast steel
- Comes in safety yellow or galvanized
- Additional colors available upon request
- No special tools necessary for installation

3.5' Pipe

Yellow Part ID: 70836-42Y

Galvanized Part ID: 70836-42G

6' Pipe

Yellow Part ID: 70836-72Y

Galvanized Part ID: 70836-72G

8' Pipe

Yellow Part ID: 70836-96Y

Galvanized Part ID: 70836-96G

10' Pipe

Yellow Part ID: 70836-120Y

Galvanized Part ID: 70836-120G



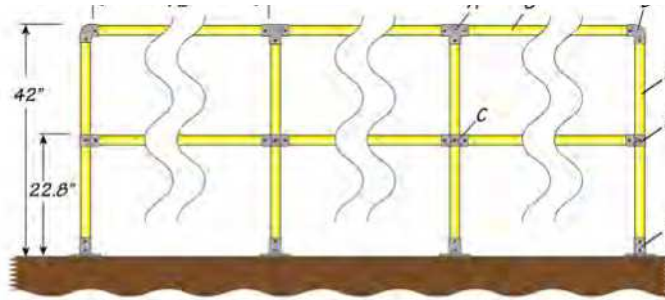
COMPLIANCE: OSHA 1910.29 & 1926.502



PASSIVE FALL PROTECTION

RAIL FITTINGS

ZIP RAIL PIPE FITTINGS



Ground Mount	A	Three Socket Tee	#13707	E	Railing Base Flange	#13711
	B	Elbow	#13751	F	Post 42"	#70836-42Y
	C	Cross	#13712	G	Rail 72"	#70836-72Y
	D	Single Socket Tee	#13750			



Elbow
Part ID: 13751



Single Socket Tee
Part ID: 13750



Swivel Elbow
Part ID: 13702



Wall Flange
Part ID: 13710



Rail Support
Part ID: 13718



Adjustable Side
Outlet Tee
Part ID: 13704



Straight Coupling
Part ID: 13708



Open End
Part ID: 13705



Single Swivel Socket
Part ID: 13714



Dual Base Flange
Part ID: 13745



Side Outlet Elbow
Part ID: 13706



Three Socket Tee
Part ID: 13707



Base Flange
Part ID: 13721



Swivel Flange
Part ID: 13713



Plastic Plug
Part ID: 13709



Side Outlet Tee
Part ID: 13703



Cross
Part ID: 13712



Railing Base Flange
Part ID: 13711



Clamp On Crossover
Part ID: 13719



Grub Screws
Part ID: 13752

COMPLIANCE: OSHA 1910.29 & 1926.502

PASSIVE FALL PROTECTION

GUARDRAIL

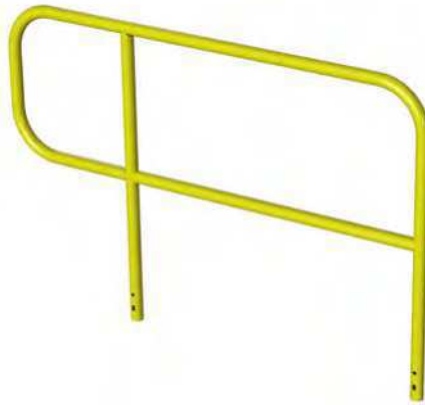
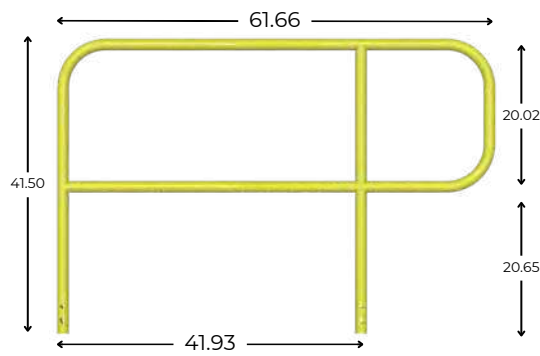
5 FT. YELLOW “D” RETURN GUARDRAIL

Perfect for ladder entry and exit points, this D Return Guardrail integrates with Universal Commercial Clamp (UCC) or Socket Guardrail Bases to complete a dependable passive fall protection system.

Made in the USA with premium materials, it provides a secure and durable “end” to any guardrail setup.

- Quick Installation
- Combine with universal guardrail system to provide a safe exit and entry off a ladder
- Fits up to 2/12 pitch
- Pin slots for easy install
- Product weight: 23.5 lbs.

Part ID: 70778



COMPLIANCE: OSHA 1910.29 & 1926.502

STANDING SEAM GUARDRAIL ASSEMBLY

Specifically designed for use on standing seam roofs, this Zip Rail Pipe Fitting assembly acts as a foundation for creating sturdy guardrails. The Standing Seam Guardrail Assembly offers versatility by allowing users to configure their own assembly using the Standing Seam Guardrail Base and included hardware.

- Intended for standing seam roofs
- Kits includes universal S-5 seam clamps
- Slots in base provide adjustability to fit seam spacing
- Part of Zip Rail Fittings to assemble reliable guardrail
- Can customize by using alternative Zip Rail Fittings than what is included
- Includes Standing Seam Guardrail Base (70838-1) and necessary hardware

Assembly Part ID: 70838

Base Part ID: 70838-1



COMPLIANCE: OSHA 1910.29 & 1926.502

PASSIVE FALL PROTECTION

GUARDRAIL

ZIP RAIL KITS

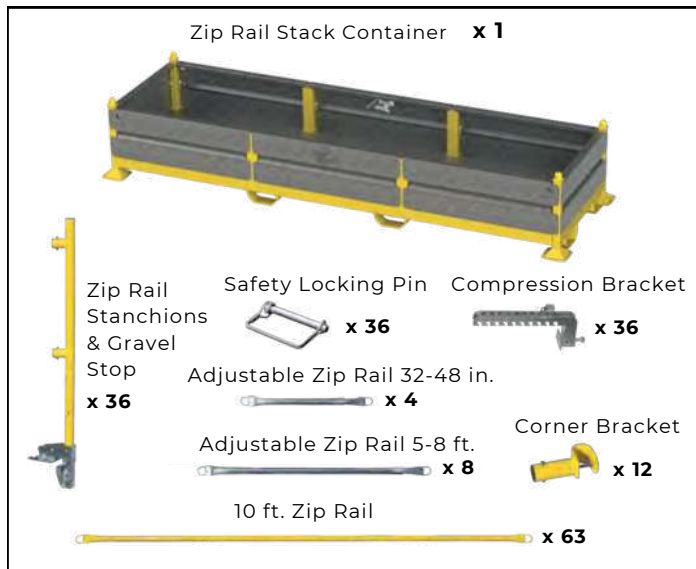
Zip Rail Kits provide everything you need to create a reliable and adaptable fall protection system. Designed for fast setup and intuitive use, these kits enhance safety by allowing workers to move freely and confidently. Perfect for a variety of job site needs, they deliver robust protection with minimal training required.

COMPRESSION KIT - 355 FT.

- Includes everything you need for 355 ft. of fall protection
- Designed for easy setup on either parapet walls or flat roof edges
- Able to be configured to meet the specific requirements of your job site
- Requires minimal training
- Features forklift pockets and hoisting rings

Part ID: 70736

KIT INCLUDES:

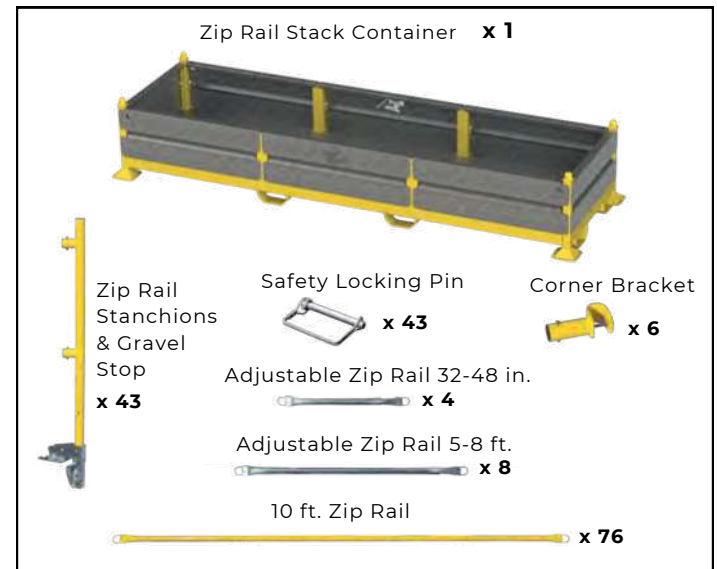


GRAVEL STOP KIT - 420 FT.

- Includes everything you need for 420 ft. of fall protection
- Conveniently packed in a stackable container for easy transportation and storage
- Easily installs on a flat roof edge
- Connecting seamlessly to the rails
- Included stanchions feature connecting pop pins
- Features forklift pockets and hoisting rings

Part ID: 70755

KIT INCLUDES:



COMPLIANCE: OSHA 1910.29 & 1926.502

PASSIVE FALL PROTECTION

GUARDRAIL

SAFETY GUARD, 4-PACK KIT

Intended to support wooden guardrail systems, these Safety Guards offer unmatched stability even in demanding job site conditions. Suitable for various construction scenarios, this guardrail base is a cost-effective and reliable solution.

- Composed of high-strength plastic
- Reinforced with gussets
- Effortlessly attaches to wood or concrete surfaces
- Features integrated toeboard system slots
- Reusable and lightweight
- Fitting for both residential and commercial construction projects

Black Part ID: 72988

Yellow Part ID: 72989

KITS INCLUDE:

4 Safety Guards, Washers, and a specialty tool



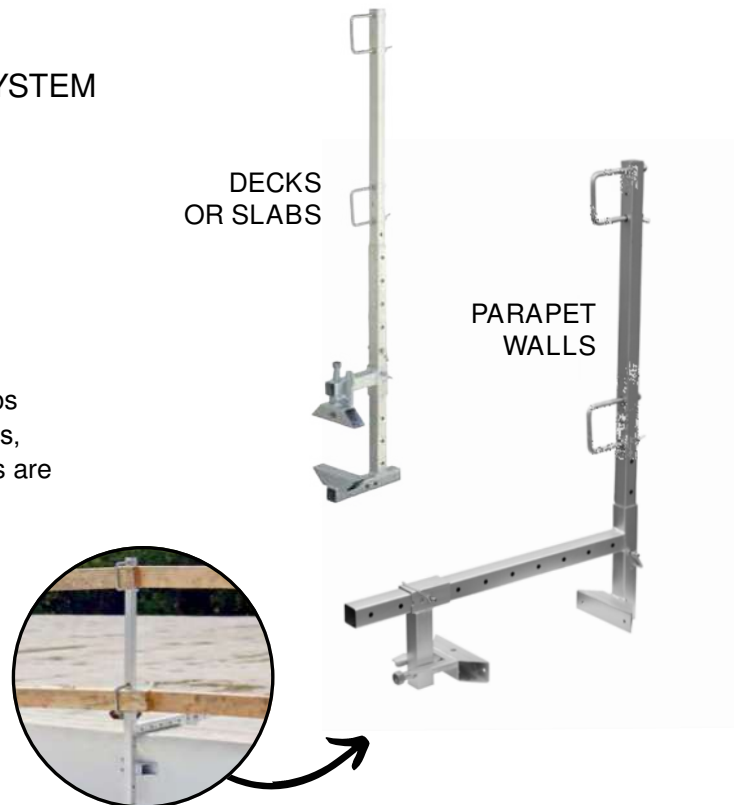
COMPLIANCE: OSHA 1910.29 & 1926.502

PARAPET WALL AND UNIVERSAL GUARDRAIL SYSTEM

A versatile 2-in-1 solution designed to enhance safety on various job sites, this innovative guardrail system provides a flexible and comprehensive fall protection solution. Prioritizing worker safety, this guardrail system offers a stable and reliable barrier that helps prevent accidents and falls in elevated work areas.

- Can be attached to both parapet walls and concrete roof slabs
- Designed to provide effective fall protection on exposed floors, walkways, decks, and other locations where safety guardrails are essential
- Features seamless integration into existing structures or new construction projects
- Comes with two per master carton

Part ID: 65015



COMPLIANCE: OSHA 1910.29 & 1926.502

PASSIVE FALL PROTECTION

WARNING LINE

ZIP WARNING LINE CART

The Zip Warning Line Cart is the most budget-friendly solution when considering the cost per linear foot of coverage.

- Cart accommodates 20 bases and 400 ft. of warning line
- Can be spaced up to 20 ft. apart when employing our Permanent Warning Line System or up to 30 ft. apart when using our standard plastic warning line
- Features 300 lbs. capacity tires (600 lbs. total capacity), vertical rigging points, caster lock, and more
- Weighs 687 lbs.



COMPLIANCE: OSHA 926.502

Part ID: 72849

MOBILE STORAGE CART

Streamlines storage and mobility, keeping components secure and accessible



HEAVY DUTY BASES

Sturdy bases featuring "L E" markings to help Leading Edge positioning



AMPLE COVERAGE

Kit includes everything you need for 400 linear feet of coverage



PASSIVE FALL PROTECTION

WARNING LINE

FOLDING WARNING LINE SYSTEM

Our Folding Warning Line System is designed to provide exceptional portability, durability, and ease of use for creating secure work zones. This system alerts workers and visitors to potential dangers, promotes a safer work environment, and creates a clear and visible boundary that keeps workers safe and restricts unauthorized personnel from entering restricted areas.

- Weighs 70 lbs.
- Includes 100 ft. of warning line pennants and stanchions
- Stanchions are pre-galvanized and coated with a clear finish
- Features a robust 4-leg support design and carrying handle



Demo
Video

Part ID: 65002



COMPLIANCE: OSHA 1926.502

TRI-LEG FOLDING WARNING LINE

This Tri-leg Folding Warning Line System offers a time-saving solution for setting up and dismantling warning lines on commercial roofing projects. This warning line system strikes the ideal balance between sturdiness and portability.

- Includes four stanchions and 100 ft. of warning line pennants
- Each stanchion features retractable carry handles
- Constructed with heavy-duty pre-galvanized tubing and a clear coat finish
- Weighs 65 lbs.



COMPLIANCE: OSHA 1926.502

Part ID: 65017

PASSIVE FALL PROTECTION

WARNING LINE

SAFE-T-ZONE WARNING LINE SYSTEMS

Tie Down's Mobile Warning Line Systems are ideal for creating controlled access zones on rooftops, industrial sites, and construction zones. Designed to meet OSHA compliance standards, these systems are portable, durable, and easy to set up, ensuring worker safety and clear hazard visibility.

6-BASE METAL WARNING LINE SYSTEM

- Includes 6 galvanized bases and 6 posts
- Equipped with 100 ft. of metal warning line and metal flags
- Flags feature a high-visibility, laser-cut "Danger" message
- Stackable, 50-lb. galvanized bases with carrying handles for portability
- Ideal for long-term, high-durability applications

Part ID: 65084



4-BASE PLASTIC WARNING LINE SYSTEM

- Includes 4 galvanized bases and 4 posts
- Supplied with 100 ft. of plastic warning line and plastic flags
- Stackable, 50-lb. galvanized bases with carrying handles for portability
- Lightweight flag design for easy transport and temporary setups

Part ID: 65001



COMPLIANCE: OSHA 1926.502



PASSIVE FALL PROTECTION

WARNING LINE

“MEN WORKING ABOVE” FLAGS 60 FT.

- Weighs 1.5 lbs.
- Designed for Tie Down Galvanized Warning Line System
- Includes 60 ft. of warning line and 18 in. yellow vinyl safety pennant flags
- Includes a “Danger Men Working” caution stencil on the warning line yellow flags

Part ID: 10067



PLAIN YELLOW PENNANT 105 FT.

- Designed for the Tie Down Galvanized Warning Line System
- Works with any perimeter warning line system
- Includes 105 ft. of high-strength rope with 30 vinyl yellow 18 in. pennant flags

Part ID: 10087



RED PENNANT 105 FT.

- Features vinyl red pennants that provide high visibility
- Includes 105 ft. of high-strength rope and 30 vinyl red 18 in. pennants

Part ID: 13865



METAL FLAGS 100 FT.

- Comes with Safe T Zone warning line system (65084)
- Includes metal plate warning flags spaced at 6 ft. intervals on a safety yellow vinyl-coated 5/32 cable
- Flags feature a laser-cut “Danger”

Part ID: 50327



COMPLIANCE: OSHA 1926.502



TIE DOWN
MANUFACTURING INGENUITY

SAFETY DIVISION
ROOF HATCH SAFETY

ROOF HATCH SAFETY

HATCH MATE

HATCH MATE

The Hatch Mate is the first roof hatch opening system to ensure universal mounting on either side of interior fixed ladders. Shipped fully assembled, its innovative design uses a chain mounted to an actuation pulley to open and close the roof hatch from the safety of ground level. This chain can be shortened or lengthened for roof heights up to 28 ft. Engineered for ease of use, this pulley system requires only several pulls on the chain to unlock and open the upper roof hatch and several pulls on the opposite side of the chain to close the hatch. To ensure permanent closure, the operator only needs to place the chain into the lock mounting bracket and lock with a standard lock and key.

- Able to be securely attached to either side of interior fixed ladders with just six fasteners
- Arrives fully assembled
- Designed for immediate deployment on your rooftop access points
- Features a chain mounted to an actuation pulley
- Accommodates roof heights up to 28 ft. using the chain provided.
- Additional chain can be added for access to roof heights taller than 28 ft.
- Crafted from a combination of aluminum and steel
- Weighs 45 lbs.
- Included are universal mounting hardware suitable for both flat bar and angle iron-style ladders
- Features built-in safety grab bar to use when climbing out of hatch

Part ID: 73057



Instruction
Manual



Demo
Video

CHAIN LOCKING MECHANISM

Ensures secure closer by locking the chain in place when hatch is not in use



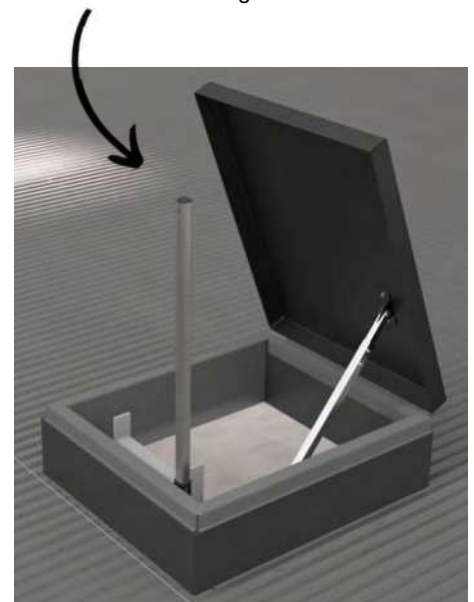
EASY OPEN & CLOSE

Actuation pulley allows for quick and easy deployment



SAFETY GRAB BAR

Provides additional point of contact when exiting the ladder



ROOF HATCH SAFETY

RAILING & LADDER POST

HATCH RAILING

The Hatch Railing Complete Kit is a comprehensive solution for meeting fall protection standards and enhancing safety around roof and floor openings. This out-of-the-box system eliminates the hazard of exposed sides of ground openings. This lightweight guardrail system provides floor opening fall protection for anyone working in or around dangerous gaps on walking and working surfaces.

- Composed of metal and coated with proprietary safety yellow coating
- Easy installation with aluminum drop in fittings
- Self-closing gate features a heavy-duty spring
- Pipe ends and tops feature a plastic fitting
- Bolts and washers are 3/8" x 2-1/2" grade Z, zinc-plated

36 in. x 30 in. Part ID: 71038

96 in. x 30 in. Part ID: 71084

54 in. x 30 in. Part ID: 71095

48 in. x 48 in. Part ID: 71089



COMPLIANCE: OSHA 1910.28, 1910.29 & 1926.502

HATCH LADDER SAFETY POST

The Hatch Ladder Hand Assist provides a best-in-class solution for climbing up and down roof hatch ladders. When a worker reaches the top of a hatch opening, the Hatch Ladder Hand Assist provides a safe and durable tool for transitioning in and out of the hatch opening. It strikes the perfect balance between sturdiness and portability.

- Weighs 20 lbs.
- Easily adjustable to accommodate different roof ladder configurations
- Designed to fit an extensive range of round and square rungs
- Features a spring-loaded mechanism
- Includes a safety locking feature to ensure a secure and reliable grip
- Can be quickly attached to roof ladders using simple tools

Part ID: 65082



COMPLIANCE: OSHA 1926.502



TIE DOWN
MANUFACTURING INGENUITY

SAFETY DIVISION
SKYLIGHT SAFETY

SKYLIGHT SAFETY

NETTING & SCREENS

SKYLIGHT NETTING

The Skylight Netting's bright colors increase visibility, effectively alerting workers to the presence of skylights and significantly reducing the risk of accidental falls or stepping onto fragile surfaces.

- Weighs 10 lbs.
- Comes with orange web strapping and a ratchet strap
- Includes two low-duty snap hooks and a carrying bag
- Combines fall protection and a fall arrest anchorage point in one solution
- Offers a temporary fall protection solution in accordance with OSHA regulations

7x7 Part ID: 65400

10x10 Part ID: 65401



DRAWSTRING BAG INCLUDED
For easy storage and transport

SKY SCREENS

These Sky Screens offer a non-penetrating solution for skylight safety without compromising the skylight's structural integrity. Installation is quick and straightforward, connecting with two 5/16 in. zinc-plated threaded rods installed on the skylight's short sides, secured in place with 1 in. aluminum clips and ½ in. hex head screws. They provide effective fall protection by preventing individuals from accidentally falling through skylights.

- Weighs 21 lbs.
- Feature a sturdy build with screen material options - 187 and .250 diameter 304 stainless steel or galvanized carbon steel wire in a 4 in. x 4 in. grid
- Offer a non-intrusive solution that doesn't require alterations to the skylight's structure
- Uses two aluminum extruded rails and two aluminum clips for a secure fit

48 in. x 48 in. Part ID: 71056

60 in. x 60 in. Part ID: 71052



COMPLIANCE: OSHA 1910.29(E)



TIE DOWN
MANUFACTURING INGENUITY

SAFETY DIVISION
STAIRS SYSTEMS

STAIR SYSTEMS

MODULAR STAIR SYSTEMS

SUPER STEPS

The Super Steps Portable Stair System provides a safer alternative for ladders on job sites. The Super Steps are faster and safer than ladders when workers require reliable access between project floors.

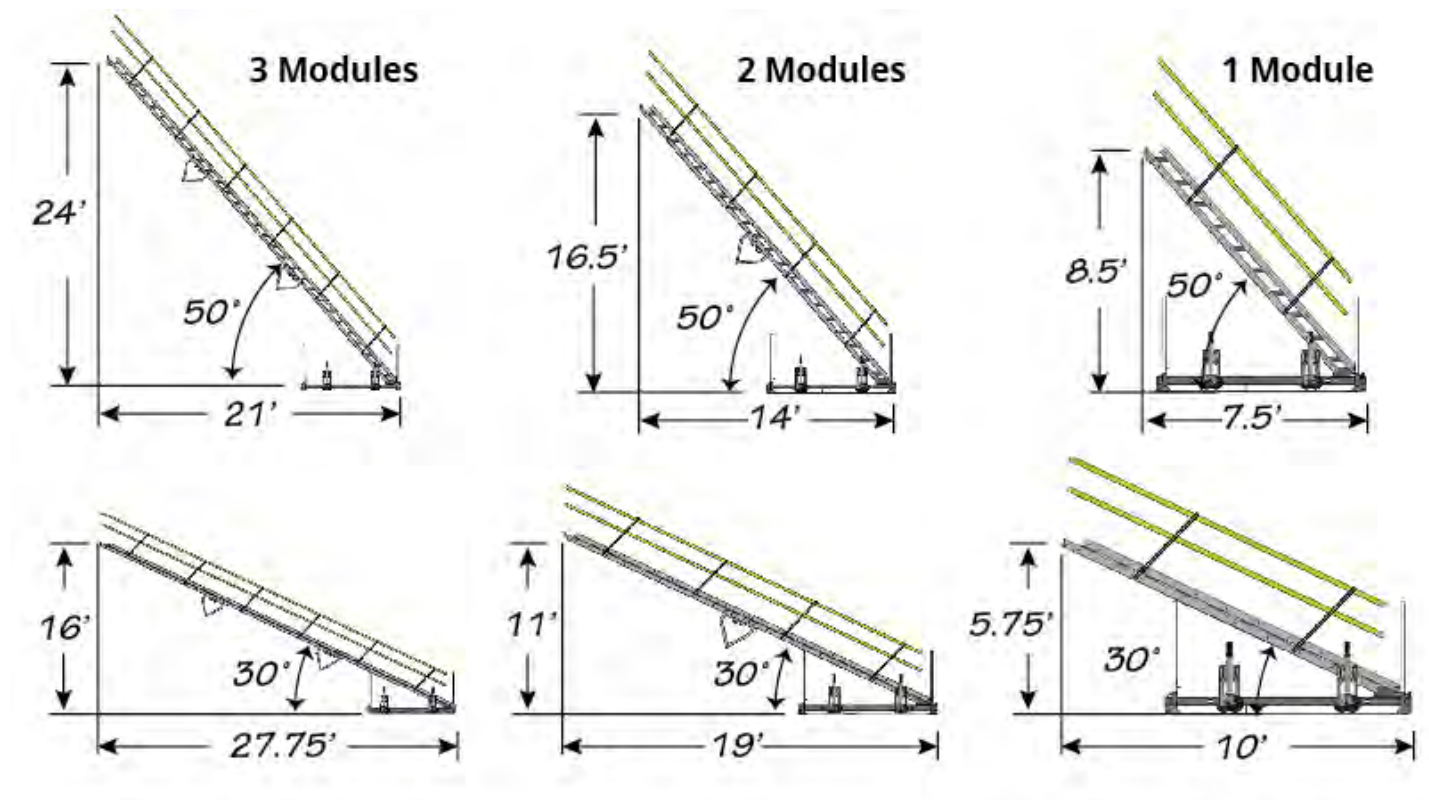
- Replace traditional wooden worksite steps or standard ladders
- Arrive on the job site ready to use
- Fully adjustable
- 48 in. x 140 in. frame holds up to three modules
- Can be stacked three high when in transit or being stored
- Eliminate the need to build and maintain temporary ladders
- Come with auto-fold side rails
- Compact shipping for ease of transportation



30 in. Part ID: 72918

40 in. Part ID: 72920

COMPLIANCE: OSHA 1926.1052



CROSSOVER BRIDGE

Designed to enhance safety in hazardous areas, this OSHA compliant Crossover Bridge provides a stable and secure walkway for workers to avoid contact with hazards, such as conveyors, machinery, and pipes.

- Constructed from powder-coated steel
- Supports weights of up to 500 lbs.
- Can be extended from 45 in. to 113.25 in.
- Includes an 8 in. step rise, a 40° climb angle, 42 in. high guardrails, and slip-resistant tread steps



COMPLIANCE: OSHA 1910.23, 1910.25, 1910.28, 1910.29, 1910.144, 1926.451

CROSSOVER TOEBOARD

These Crossover Toeboards present the opportunity for a cleaner look by replacing the 2x4s used for Tie Down's Crossovers. Compliant with OSHA's toeboard standards, these toeboards are rated to sustain up to a 50 lb. load.

- Available in two sizes: 4 ft. - 7.5 ft. and 5.5 ft. - 9.75 ft.
- Come in either pre-galvanized or safety yellow powder-coat
- Intended to replace 2x4s for cleaner look
- Able to sustain 50 lbs.
- Weight: 15 lbs. (73067) and 11 lbs. (73068)

5.5 ft. - 9.75 ft. Part ID: 73067

4 ft. - 7.5 ft. Part ID: 73068



COMPLIANCE: OSHA 1917.112(D)

STAIR SYSTEMS

CROSSOVERS

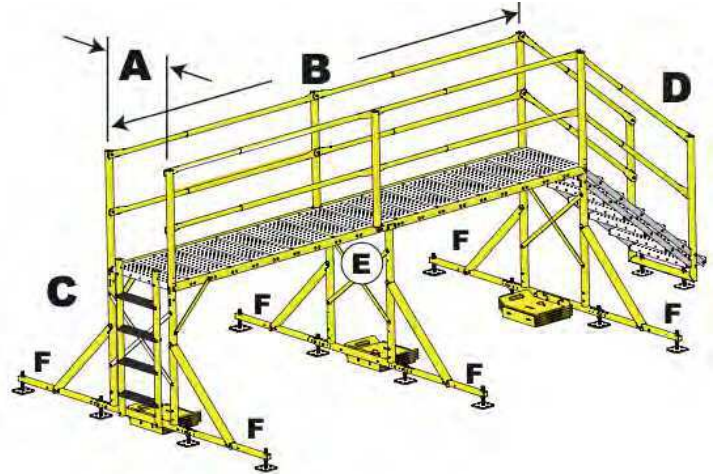
CUSTOM CROSSOVER SELECTION FORM

A CROSSOVER WIDTH

- ☐ 24 Inches
- ☐ 30 Inches
- ☐ 40 Inches - Requires Step n' Safe Extension
(See Additional Hardware below)

B CROSSOVER LENGTH (CLEARANCE)

- ☐ 5 Steps / 45" ☐ 9 Steps / 84"
- ☐ 6 Steps / 54.75" ☐ 10 Steps / 93.75"
- ☐ 7 Steps / 64.5" ☐ 11 Steps / 103.5"
- ☐ 8 Steps / 74.25" ☐ 12 Steps / 113.25"



E Platform Splicing Kits - Available for lengths longer than 12 Steps / 113.25"

C STAIRS OR LADDER (C SIDE)

- | | | | | | | |
|---------------|--------------------------------|--------------------------------|--------------------------------|------------------------------------|------------------------------------|------------------------------------|
| Steps/Height | <input type="checkbox"/> 3/30" | <input type="checkbox"/> 4/38" | <input type="checkbox"/> 5/46" | <input type="checkbox"/> 6/54" (F) | <input type="checkbox"/> 7/62" (F) | <input type="checkbox"/> 8/70" (F) |
| Ladder/Height | <input type="checkbox"/> 30" | <input type="checkbox"/> 38" | <input type="checkbox"/> 46" | <input type="checkbox"/> 54" (F) | <input type="checkbox"/> 62" (F) | <input type="checkbox"/> 70" (F) |

F Stair/Ladder Stabilizer Required at heights 54" and above

D STAIRS OR LADDER (D SIDE)

- | | | | | | | |
|---------------|--------------------------------|--------------------------------|--------------------------------|------------------------------------|------------------------------------|------------------------------------|
| Steps/Height | <input type="checkbox"/> 3/30" | <input type="checkbox"/> 4/38" | <input type="checkbox"/> 5/46" | <input type="checkbox"/> 6/54" (F) | <input type="checkbox"/> 7/62" (F) | <input type="checkbox"/> 8/70" (F) |
| Ladder/Height | <input type="checkbox"/> 30" | <input type="checkbox"/> 38" | <input type="checkbox"/> 46" | <input type="checkbox"/> 54" (F) | <input type="checkbox"/> 62" (F) | <input type="checkbox"/> 70" (F) |

F Stair/Ladder Stabilizer Required at heights 54" and above

ADDITIONAL HARDWARE

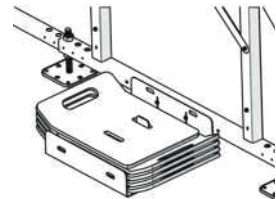
Step n' Safe Extension
Required for 40" wide
ladder crossovers

- ☐ One ☐ Two



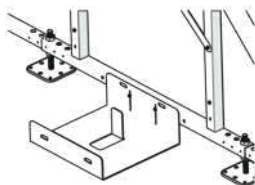
Ballast PLates 37 lbs. (ea.)

- ☐ Total Ballast Plates



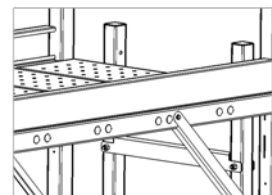
Ballast Bracket
Can be used with cinder
blocks or ballast plates

- ☐ One ☐ Three
- ☐ Other:



Toeboards
Used to replace 2x4s

- ☐ 5.5 ft. - 9.75 ft.
- ☐ 4.5 ft. - 7.5 ft.



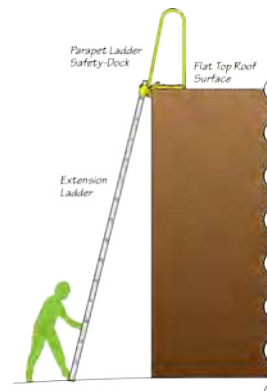
LADDER SAFETY DOCK

This Ladder Safety Dock offers a quick and secure solution for ladder placement on parapet walls. With a simple installation that takes just minutes, it is available in 2 piece or 3 piece configurations.

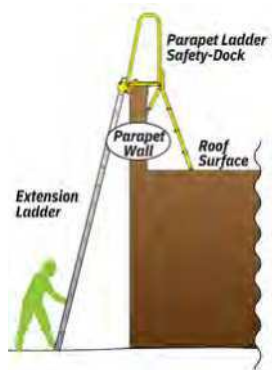
- Customizable to fit your specific needs through easy cutting
- Features non-slip adhesive tape on ladder rungs to prevent accidents
- Accommodates parapet walls up to 4 in. tall
- Includes a locking chain for extra security
- Compatible with all commercially rated temporary ladders

2 pc. Part ID: 71069

3 pc. Part ID: 71070



Flat Top Roof Surface



Parapet Wall to Roof Surface



COMPLIANCE: OSHA 1926.1053

COMMERCIAL LADDER DOCK

The Commercial Roofing Ladder Dock provides a safe access point for most ladders on commercial roof edges. This roof ladder dock attaches to the roof edge while protecting the roof against this unsightly damage. This product assists the efforts of maintenance and HVAC technicians, construction workers, roofing contractors and employees, and more.

- Designed with a slip-resistant surface
- Features a built-in tie-off point and safety chains
- Prevents scratches, dents, and other forms of damage
- Crafted with durable materials

Part ID: 70831



COMPLIANCE: OSHA 1926.1053



TIE DOWN
MANUFACTURING INGENUITY

SAFETY DIVISION
ANCHORS

COMMERCIAL ROOF ANCHORS

Commercial Roof Anchors (CRAs) offer the perfect anchor point for fall protection in situations where height limitations come into play. They are indispensable when workers are engaged on suspended roofs, self-powered platforms, or whenever active fall protection becomes a necessity. Our CRAs represent a critical element of your active fall protection strategy.

Forged Eye				
Post Height In	Base Size (in.)	Attachment Type	Number of Fasteners	Part ID
12	16 x 16	Screw/Bolt On	40 Wood/Metal /8 Concrete	70864-L16
	12 x 12	Bolt On	8 Concrete	70864-L12
	NA	Weld On	Field Weld - 5/16"	70864-LF
18	16 x 16	Screw/Bolt On	40 Wood/Metal /8 Concrete	70870-L16
	12 x 12	Bolt On	8 Concrete	70870-L12
	NA	Weld On	Field Weld - 5/16"	70870-LF

Swivel Top				
Post Height In	Base Size (in.)	Attachment Type	Number of Fasteners	Part ID
12	16 x 16	Screw/Bolt On	40 Wood/Metal /8 Concrete	70864-S16
	12 x 12	Bolt On	8 Concrete	70864-S12
18	16 x 16	Screw/Bolt On	40 Wood/Metal /8 Concrete	70870-S16
	12 x 12	Bolt On	8 Concrete	70870-S12



Forged Eye



Weld On



Swivel Eye



COMPLIANCE: OSHA 1917.112(D)



HIPPO ANCHOR

Without the need for roof penetration, this system offers exceptional fall arrest and fall restraint capabilities. It is designed to prevent leaks and protect your roof from damage. The central anchor is strategically raised to minimize fall travel distance.

- Eliminates the need for drilling or roof penetration
- Rated for one worker in fall arrest or two workers in fall restraint
- Suitable for both temporary and permanent applications
- Compatible with lanyards up to 900 lbs.
- Weighs 635 lbs.
- Features a 12 or 16 plate deadweight design
- Can be used with roofs with up to a 5° pitch

Style	System	Part ID
Swivel Cap	12 Plate, 365 lbs.	65219G
	16 Plate, 825 lbs.	65220G
Forged Cap	12 Plate, 365 lbs.	65219GC
	16 Plate, 825 lbs.	65220GC
Accessory	Counterweight, 45lbs	11032

Forged Cap
Option Available



COMPLIANCE: OSHA 1926.502, 1910.140
& ANSI Z359.6

4 WAY ROOF ANCHOR

This multidirectional anchor has the ability to move in multiple directions while using a single tie-off point. The four connection points increase the worker's range of motion, allowing the worker to detach from one connection point to the next. This anchor plate works for both fall arrest and fall restraint.

- Offers a fall protection anchor point for one worker in fall arrest or two workers in fall restraint
- Compatible with metal, wood, and concrete applications
- Works with a horizontal lifeline system due to the 90° angles between each anchor point

Part ID: 65080



COMPLIANCE: OSHA 1917.140

TWO-WAY STANDING SEAM ROOF ANCHOR

Provides fall protection with a non-penetrating design that mounts directly onto the standing seam of the roof, ensuring easy setup and reduced roof damage.

- Mounts directly onto the standing seam of the roof
- Offers a reusable design
- Made of durable steel construction with a zinc electroplate finish
- Includes a clamp that fits MR-24, VSR, & similar roof profiles
- Features a strength rating of 5,000 lbs. and a 130-310 lbs. capacity for workers with tools

Part ID: 13864



COMPLIANCE: OSHA 1926 SUBPART M, 1910
ANSI Z359.1-2007, ANSI A10.32-2012

PARAPET ROOF ANCHOR

This anchor ensures fall protection on parapet walls, perfect for lower-level surfaces where roof penetration isn't an option. Compatible with retractable lanyards, vertical lifelines, and shock-absorbing lanyards, it features a large, easy-grip adjustment handle for quick and secure installation.

- Designed as a single tie-off anchor for fall arrest
- Adjusts and fits parapet walls between 4 in. to 16 in. wide
- Compatible with a horizontal lifeline system of up to 20 ft.
- Rated for an impressive 5,000 lbs.
- Includes a safety pin for secure setup

Part ID: 65077Z



COMPLIANCE: OSHA 1926.502 & 1910.140

DOOR JAMB ANCHOR

The Door and Window Jamb Anchor acts as a portable fall protection anchor point designed for fall arrest. The design offers a simple installation.

- Works in locations where a door or window frame provides a safe, secure, and temporary fall protection anchor point
- Fits openings from 24 in. to 52 in. wide
- Fully adjustable and lightweight design

Part ID: 65078Z



COMPLIANCE: OSHA 1926.502 & 1910.140



TIE DOWN
MANUFACTURING INGENUITY

SAFETY DIVISION
WAREHOUSE SOLUTIONS

PALLET CARRIER

The Pallet Carrier is capable of transporting a range of items, from insulation to rubber rolls. Its large tires enable smooth movement on all decks, and the rear wheels are adjustable to change the tilt for easy control.

- Adjustable tilt for better control
- All-steel frame with flat-free tires
- Features multi-piece formed handle and multi-axis casters to provide easy movement on all surfaces
- Includes pinned caster lock to prevent caster from rotating and cart from rolling down sloped surfaces

Part ID: 73058

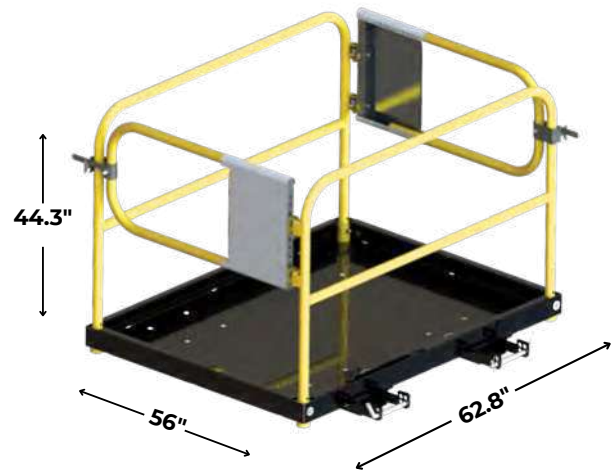


BREEZETHRU WORK PLATFORM

Built with safety in mind for all kinds of overhead work, Tie Down's BreezeThru Forklift Work Platform is a simple design that meets workplace safety requirements for overhead work in warehouses, around farms and in workshops where working on a ladder may be difficult unsafe or impossible.

- Safely lift workers for tasks not suitable for ladders
- 2 self-closing swing gates with locks
- Fall arrest anchorages for two workers or 1000-pound capacity
- Slip resistant flooring
- Weight: 226 lbs.

Part ID: 39008



COMPLIANCE: OSHA 1926.451 & 1926.502

WORK PLATFORM TOOLBOX

Designed to hang securely over the railing of the work platform, this toolbox is engineered to accommodate workers' tools, enhancing safety and efficiency when transporting tools to elevated heights.

Part ID: 49346



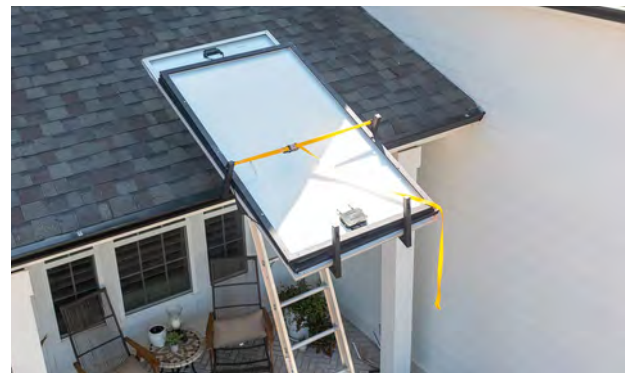
TIE DOWN
MANUFACTURING INGENUITY

SAFETY DIVISION
RESIDENTIAL SAFETY

TRANZVOLT

The TranzVolt G2 system is designed to safely hoist materials onto the roof in demanding job site conditions. This eco-friendly and cost-efficient product now utilizes high-performance 12-strand single braid synthetic rope, which has extremely low stretch, superior flex fatigue, wear resistance, and ability to prevent entanglement. The energy-efficient, battery-powered G2 powerbox eliminates the need for fuel and oil on the job site. Intended for use in tight spots or when low-noise ordinances are being enforced, it carries material up to 44 ft. high at a rate of 2 ft. per second, reaching the height of a two-story building in under 25 seconds.

- Carries material 44 ft. high at a rate of 2 ft. per second, reaching two story building in under 25 seconds
- Uses two standard DeWalt Brand 20V batteries or Milwaukee Brand 18V rechargeable batteries (not included)
- Lifts up to 250 lbs. for eight hours
- Extended two year warranty
- Utilizes high-performance 12-strand single braid synthetic rope
- Doesn't require fuel or oil
- Available in Roofing and Solar Tilt Platforms



G2 POWERBOX

Through the use of two standard DeWalt 20V or Milwaukee 18V batteries, this fully electric power box eliminates fuel costs while remaining durable and reliable in its ability to carry materials 44 ft. high at a rate of 2 ft. per second.

- Fully electric - no fuel or oil required
- Requires (2) DeWalt Brand 20V batteries or Milwaukee Brand 18V batteries (not included)
- Weighs 33 lbs.
- Lifts 2 ft. per second
- Lifting capacity of 250 lbs.
- Small, compact, and easy to carry
- Two year warranty

Part ID: 40660



RESIDENTIAL SAFETY

LIFTING HOISTS

TRANZVOLT G2 BATTERY-POWERED LIFTING HOIST PRO KITS

SOLAR TILT PLATFORM KIT

The TranzVolt G2 Solar Tilt Kit is a great tool for lifting materials, such as:

- Solar panels
- Plywood
- Windows
- Doors



Solar Tilt DeWalt Part ID: 40683

Solar Tilt Milwaukee Part ID: 40685

ROOFING PLATFORM KIT

The TranzVolt G2 Roofing Kit is a great tool for lifting materials, such as:

- Shingles
- Rolled goods
- Tools
- Bulk roofing materials



Roofing DeWalt Part ID: 40684

Roofing Milwaukee Part ID: 40686

Platform Frame



Rope



Cambuckle Straps



Top Cap With Tilt Rollers



4 FT. Base Track Section (1)



8 FT. Track Sections (3)



Remotes (2)



Power Box Carrying Bag



Power Box



Bottom Stop Bracket (2)



UTILITY TRAY

Intended to hoist tools, loose goods, hardware, etc. to the roof, this accessory replaces the Solar Tilt or Roofing platforms for TranzVolt.

- Used to hoist tools, used goods, hardware, etc.
- Wrinkle black coating
- 16 gauge steel sheet formed bucket
- Weight: 18 lbs.
- Holding capacity: 250 lbs.



Part ID: 40679

TRACK SECTION STAND OFF

This track section stand off is compatible with Tie Down's TranzVolt. With its easy attachment, it prevents the track from resting against the residential home, protecting the roof and gutters' integrity.

- Zinc-plated
- Intended to prevent track from making contact with roof
- Integrates with TranzVolt
- Equipped with locking pins
- Weight: 12 lbs.



Part ID: 48599

RESIDENTIAL SAFETY

LADDER ACCESSORIES

STEP-N-SAFE LADDER EXTENSION

Designed to provide a secure walking surface when accessing a higher level, the Step-N-Safe Ladder Extension ensures enhanced stability and safety for workers. It minimizes the risk of slips and falls, allowing for confident movement on the ladder.

- Compatible with a wide range of ladder types, from Type II to Special Duty Type IAA
- Intuitive design allows for easy installation and seamless integration with your ladder
- Designed to enhance stability and safety for workers accessing a walking surface from a ladder
- Features a broad base with non-skid rubber padding

Part ID: 72874



COMPLIANCE: OSHA 1910.29 & 1926.502

STEP-N-SAFE GATE

The Step-N-Safe Ladder Extension Gate attachment option is designed to place a swing gate on the job site. Its height allows for easier compliance with the proper ladder elevation above its 36 in. walking surface and increases the work surface's contact area while transitioning to an elevated walking surface.

- Fully compatible with ladders from Type II to Special Duty Type IIA
- Composed of high-quality aluminum steel
- Self-closing

Black Part ID: 72942

Yellow Part ID: 72941

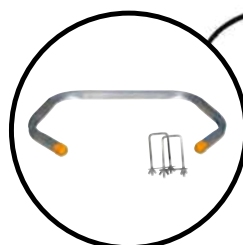


CORNER LADDER STABILIZER

The Corner Ladder Stabilizer provides stability for corners and flat surfaces, fitting any aluminum ladder. It enhances safety and comfort in hard-to-reach areas.

- 18" stand off on flat surfaces
- Includes rubber caps and hardware
- Product weight: 5 lbs.

Part ID: 48586



LADDER STAND OFF

This stabilizer provides a secure and balanced platform for working on extension ladders.

- Features 18.5 in. standoff
- Allows easy access to gutters, downspouts, and soffits
- Crafted from lightweight and durable aluminum
- Weighs 12 lbs.
- Protects roofing, gutters, siding, and paint finishes

Part ID: 48589

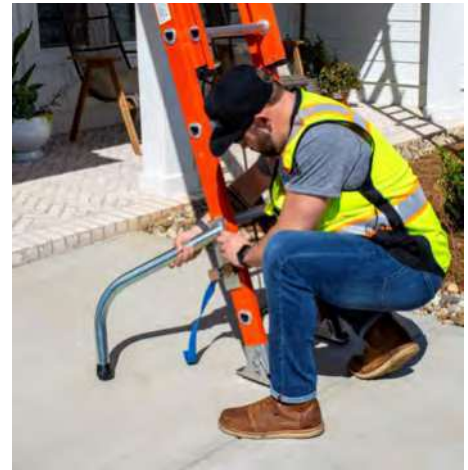


LADDER SAFETY LEGS

The Ladder Safety Legs provide stability and reduce the risk of your ladder shifting out of place.

- Features non-intrusive design
- Independently adjust legs to accommodate uneven ground
- Constructed from zinc-plated steel
- Includes steel ratchet and nylon straps to fasten legs to the ladder
- Feature rubber feet that provide an extra grip on various surfaces
- Weighs 11 lbs.

Part ID: 70833



LADDER ROOF HOOKS

These Ladder Hooks offer a solution for safe rooftop access, catering to various applications like roofing, maintenance, and construction projects.

- Features stationary wheels to offer controlled movement and placement of ladder over roof's peak
- Attach by securing to the top two rungs of ladder or ladder extension
- Recommended to use two per ladder
- Weight capacity of 500 lbs. (250 lbs. per ladder hook)
- T-bar with a rubber grip provides protective barrier between the ladder and the roof surface

Zinc-Plated Part ID: 65005

Powder-Coated Black Part ID: 65005BK

Powder-Coated Blue Part ID: 65005BL

Powder-Coated Yellow Part ID: 65005Y



RESIDENTIAL SAFETY

LADDER ACCESSORIES

RESIDENTIAL LADDER DOCK

The Residential Ladder Dock provides a safe access point for ladders on the roof edge of a building. This roofing tool allows safe entry onto the roof and protects the roof from damage caused by ladders resting on eaves and roof edges.

- 21.5 in. x 26 in.
- Fits up to a 6/12 roof pitch
- Made of strong, industrial grade aluminum
- Compatible with most ladders
- Includes safety chains for additional security
- Features slip resistant tie off

Part ID: 70832



COMPLIANCE: OSHA 1926.1053

LADDER STABILITY ANCHOR

The Ladder Stability Anchor reduces the possibility of the bottom of the ladder from kicking out or from sliding due to the transition between the two. Simply secure the Ladder Stability Anchor to a fascia board or another horizontal structural member, attach the hook, loop to the anchor, wrap the straps around the rung of the ladder, and your ladder anchor is installed.

- Allows workers to secure a ladder against a structure
- Offers ease of use and requires no tools
- Prevents both horizontal and vertical movement
- Weighs 3 lbs.
- Includes one anchor and two 48 in. Velcro straps
- Crafted from durable aluminum
- Compatible with extension ladders, step ladders, and more

Part ID: 70827



HITCHCLIP

These lightweight roof climbing anchors are specially designed for anchoring fall protection equipment, keeping you firmly secured during roof work or other roofing activities. This makes them ideal for setting up guardrail systems, staging areas, and more.

- Crafted from lightweight and robust powder-coated aluminum
- Complete with user-friendly drill-hole instructions right on the label
- Allows you to replace roof shingles efficiently, securely, and safely
- Specially designed for anchoring fall protection equipment
- Features patent-pending keyhole design
- Provides anchorages for guardrail posts, bunk jacks, and a wide range of other accessories
- Can be used as a 5,000 lb. single anchor point or integrated with additional staging equipment
- Weighs 2 lbs.

3 Pack, Black Part ID: 65087

3 Pack, Red Part ID: 65088

25 Pack, Black Part ID: 65089

100 Pack, Black Part ID: 65086-BL-100



COMPLIANCE: OSHA 1926.502 & 1910.140

DOUBLE D RING ROOF ANCHOR

The Double D Ring Roof Anchor offers dual D-ring anchorage points when installed on a wood roof sub-surface. The exposed D-ring provides a quick and safe fall arrest connection point. This permanent roof anchor must be used in conjunction with a shock-absorbing lanyard that limits fall arrest forces to 900 lbs. This anchor is specifically designed for installation over a ridge peak, making it an essential component for elevated work on roofs.

- Constructed with galvanized steel
- Features two zinc-plated steel D-rings
- Ideal for single-user fall protection
- Ideal for use in new construction or roofs with asphalt, shake, or tile materials
- Used with shock-absorbing lanyard

Part ID: 71080



COMPLIANCE: OSHA 1926.502 & 1910.140

RESIDENTIAL SAFETY

LADDER ACCESSORIES

STEEP SLOPE GUARDRAIL

The Steep Slope Guardrail is engineered for top-tier safety on steep roofs. Its versatility enables you to confidently work on a variety of roof slopes while maintaining precise positioning and utmost safety. This robust system can handle the demands of the job, supporting both worker safety and efficient construction processes.

- Offers five adjustable pitch positions ranging from 4/12 to 16/12
- Includes an extra wing nut and bolt
- Features adjustable rail brackets to simplify attachment to standard 2 x 4's
- Has a maximum spacing of 8 ft.
- Two per master carton

Part ID: 65014



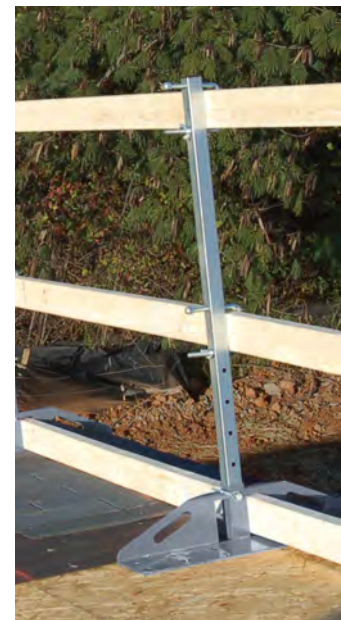
COMPLIANCE: OSHA 1926.502

RAKE EDGE BRACKET

The Rake Edge Bracket is your reliable partner for steep slope roofing projects, speeding up roofing installation by allowing easy repositioning on the roof rake edge. Designed for use with the Steep Slope System, this bracket fits under shingle tabs for quick installation and removal, establishing a stable and secure platform for workers during roofing activities.

- Designed to fit rake edges and eaves with 4/12 pitch or less
- Intended for use with Tie Down's Steep Slope System
- Keyhole nail openings allow for flexible spacing of 16 in. or 24 in.
- Features toe board openings and self-locking rail brackets
- Constructed with a pre-galvanized rail tube
- Weighs 12 lbs.

Part ID: 65023



COMPLIANCE: OSHA 1926.502

DELIVERING INNOVATIVE SOLUTIONS

Tie Down aims to produce the highest-quality products. This aim not only applies to our safety products, but to every industry we serve. From manufactured housing to marine, safety to roofing, agriculture to outdoor living, we continue to push boundaries and deliver innovative solutions.

Check out our website for more information on the industries we serve. www.tiedown.com



SAFETY



ROOFING



MARINE



MANUFACTURED HOUSING



AGRICULTURE



OUTDOOR LIVING

TIE DOWN

MANUFACTURING INGENUITY



INNOVATIVE RENTAL SUPPLY

YOUR TRUSTED PARTNER FOR SAFETY EQUIPMENT

Innovativerentalsupply.com

(240) 539-0636