



ASB HOOPS

A CURATED COLLECTION
OF HARDWOOD STYLES



REVERSIBLE




**SWISH
REVERSIBLE JERSEY**
6927 Adult
S-2XL

6928 Youth
S-L

- Two layers of 100% polyester wicking knit with color secure® technology that helps prevent dye migration
- Outside locker label
- Fully reversible
- Each layer hemmed separately for easy embellishment


**SWISH
REVERSIBLE SHORTS**
6929 Adult
S-2XL

6930 Youth
S-L

- Two layers of 100% polyester wicking knit with color secure® technology that helps prevent dye migration
- Tear away label
- Covered elastic waistband with inside drawcord
- Fully reversible
- 6.5-inch inseam
- Youth inseam graded





MATCH-UP



COORDINATING LADIES
6888 pg. 49



MATCH-UP JERSEY

6886 Adult
S-3XL

6887 Youth
S-XL

- 100% polyester wicking knit with color secure® technology that helps prevent dye migration
- Tagless label
- Outside locker label
- Designed to be NFHS compliant



MATCH-UP SHORTS

6889 Adult
S-3XL

6890 Youth
S-XL

- 100% polyester wicking knit with color secure® technology that helps prevent dye migration
- Tagless label
- Covered elastic waistband with inside drawcord
- Side vent
- 6.5-inch inseam
- Youth inseam graded
- Designed to be NFHS compliant



BLACK/
WHITE
420

COLUMBIA
BLUE/
WHITE
293

DK GREEN/
WHITE
438

GOLD/
WHITE
245



GRAPHITE/
WHITE
R04

MAROON/
WHITE
380

NAVY/
WHITE
301

ORANGE/
WHITE
320



PURPLE/
WHITE
450

ROYAL/
WHITE
280

SCARLET/
WHITE
408

WHITE/
GRAPHITE
V751





STEP-BACK



COORDINATING LADIES

1732 pg. 47



STEP-BACK JERSEY

1730 Adult
S-3XL

1731 Youth
S-XL

- 100% polyester wicking knit with color secure® technology that helps prevent dye migration
- Updated tailored fit
- Tagless label
- Outside locker label
- Designed to be NFHS Compliant



STEP-BACK MODERN FIT SHORTS

1736 Adult
S-3XL

1737 Youth
S-XL

- 100% polyester wicking knit with color secure® technology that helps prevent dye migration
- Updated tailored fit
- Tagless label
- Covered elastic waistband with inside drawcord
- 6-inch inseam
- Youth inseam graded
- Designed to be NFHS Compliant



STEP-BACK SHORTS

1733 Adult
S-3XL

1734 Youth
S-XL

- 100% polyester wicking knit with color secure® technology that helps prevent dye migration
- Updated tailored fit
- Tagless label
- Covered elastic waistband with inside drawcord
- 8-inch inseam
- Youth inseam graded
- Designed to be NFHS Compliant

BLACK/ WHITE 420	COLUMBIA BLUE/ WHITE 293	DARK GREEN/ WHITE 438	GOLD/ WHITE 245
GRAPHITE/ WHITE R04	MAROON/ WHITE 380	NAVY/ WHITE 301	ORANGE/ WHITE 320
PURPLE/ WHITE 450	ROYAL/ WHITE 280	RED/ WHITE 400	WHITE/ BLACK 226
WHITE/ NAVY 221	WHITE/ RED 225	WHITE/ ROYAL 220	WHITE/ SILVER E64



TIP-OFF





TIP-OFF SHOOTER SHIRT

1728 Adult
S-3XL

- 100% polyester wicking knit with color secure® technology that helps prevent dye migration
- 92% polyester/8% spandex wicking pinhole mesh sleeve insert and back yoke with color secure® technology
- Tagless label
- Set-in sleeves



BLACK/
WHITE
420



GRAPHITE/
WHITE
R04



NAVY/
WHITE
301



ROYAL/
WHITE
280



SCARLET/
WHITE
408



MATCH-UP



COORDINATING ADULT | YOUTH
6886 | 6887 | 6889 | 6890 pg. 39



LADIES MATCH-UP JERSEY

6888 Ladies
XS-2XL

- 100% polyester wicking knit with color secure® technology that helps prevent dye migration
- Tagless label
- Outside locker label
- V-neck collar
- Designed to be NFHS compliant

BLACK/ WHITE 420	COLUMBIA BLUE/ WHITE 293	DK GREEN/ WHITE 438	GOLD/ WHITE 245	GRAPHITE/ WHITE R04	MAROON/ WHITE 380
NAVY/ WHITE 301	ORANGE/ WHITE 320	PURPLE/ WHITE 450	ROYAL/ WHITE 280	SCARLET/ WHITE 408	WHITE/ GRAPHITE V751

6889
pg. 35



STEP-BACK



COORDINATING ADULT | YOUTH
1730 | 1731 | 1733 | 1734 pg. 41



LADIES STEP-BACK JERSEY

1732 Ladies
XS-2XL

- 100% polyester wicking knit with color secure® technology that helps prevent dye migration
- Updated tailored fit
- Tagless label
- Outside locker label
- Racerback styling
- Designed to be NFHS compliant



LADIES STEP-BACK MODERN FIT SHORTS

1738 Ladies
XS-2XL

- 100% polyester wicking knit with color secure® technology that helps prevent dye migration
- Updated tailored fit
- Tagless label
- Covered elastic waistband with inside drawcord
- 5-inch inseam
- Designed to be NFHS Compliant



1734
pg. 41





CROSSTOWN



Dry-Excel™

NEW

**CROSTOWN
WARM-UP JACKET**

223530 S-3XL	Adult
223630 S-L	Adult Tall
223730 S-2XL	Youth
	Ladies
	Ladies Tall

NEW MT-2XLT

- Dry-Excel™ 100% polyester double-knit
- Dry-Excel 100% polyester mesh inserts
- Ladies' fit on style 223730
- Set-in sleeves
- Front zippered pockets
- Open bottom
- Dropped tail

Dry-Excel™

NEW

**CROSTOWN
WARM-UP PANT**

223531 S-3XL	Adult
	Adult Tall
223631 S-L	Youth
223731 S-2XL	Ladies
	Ladies Tall

NEW MT-2XLT

- Dry-Excel™ 100% polyester double-knit
- Dry-Excel 100% polyester mesh inserts
- Ladies' fit on style 222731
- Covered elastic waistband with inside drawcord
- Side seam pockets
- Tapered leg
- Zipper on outside lower leg

BLACK/
BLACK
425BLACK/
WHITE
420GRAPHITE/
WHITE
R04NAVY/
WHITE
301ROYAL/
WHITE
280SCARLET/
WHITE
408WHITE/
BLACK
226


**VENTURA
SOFT KNIT HOODIE**
222598 Adult
 S-3XL

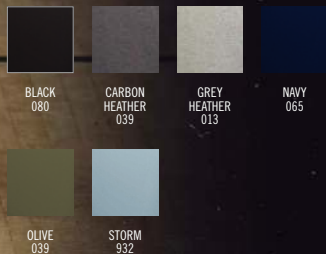
222698 Youth
 S-XL

- Lightweight, soft-knit
- Solids, 89% recycled polyester/11% spandex
- Heathers, 45% recycled polyester/44% polyester/11% spandex
- Tagless label
- 3-panel hood with drawcord on Adult only
- Side seam pockets
- Set-in sleeves
- Self-fabric cuffs and bottom band


**VENTURA
SOFT KNIT JOGGER**
222599 Adult
 S-3XL

222699 Youth
 S-XL

- 89% recycled polyester/11% spandex
- Lightweight, soft-knit
- Solids, 89% recycled polyester/11% spandex
- Heathers, 45% recycled polyester/44% polyester/11% spandex
- Tagless label
- Covered elastic waistband with outside drawcord
- Faux fly
- Front pockets with inner valuables pocket inside left pocket
- Back pocket with zipper
- Tapered leg





VENTURA SOFT KNIT SHORT SLEEVE HOODIE

222505 Adult
S-3XL

222605 Youth
S-XL

- Lightweight, soft-knit
- Solids, 89% recycled polyester/11% spandex
- Heathers, 45% recycled polyester/44% polyester/11% spandex Tagless label
- 3-panel hood with drawcord on Adult only
- Side seam pockets
- Set-in sleeves



WARM-UPS

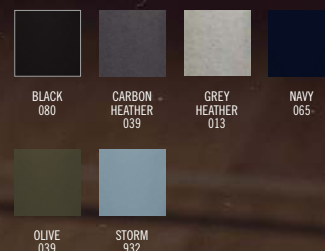


VENTURA SOFT-KNIT SHORTS

223504 Adult
S-3XL

223604 Youth
S-XL

- Lightweight, soft-knit
- Solids, 89% recycled polyester/11% spandex
- Heathers, 45% recycled polyester/44% polyester/11% spandex Tagless label
- Covered elastic waistband with outside drawcord (inside drawcord on Youth)
- Front pockets with inner valuables pocket inside left pocket
- Back pocket with zipper
- 8-inch inseam



FOR CANADIAN PRICING AND INVENTORY DETAILS
VISIT WWW.AUGUSTASPORTSWEAR.CA


**LADIES VENTURA
SOFT KNIT HOODIE**
222798 Ladies
XS-2XL

- Lightweight, soft-knit
- Solids, 89% recycled polyester/11% spandex
- Heathers, 45% recycled polyester/44% polyester/11% spandex
- Tagless label
- 3-panel crossover hood
- Set-in sleeves with thumbholes for warmth
- Self-fabric cuffs and bottom band
- Side vents

				
BIRCH 907	BLACK 080	CARBON HEATHER E83	DARK GREEN 035	GREY HEATHER 013
				
MAROON 745	NAVY 065	OLIVE 039	LAVENDER J63	ORCHID 47V
				
TERRACOTTA J46	ROYAL 060	SCARLET 083	STORM 932	

EQUINOX
BASKETBALL



**LADIES VENTURA
SOFT KNIT JOGGER**

222799 Ladies
XS-2XL

- Lightweight, soft-knit
- Solids, 89% recycled polyester/11% spandex
- Heathers, 45% recycled polyester/44% polyester/11% spandex Tagless label
- Covered elastic waistband with outside drawcord
- Faux fly on Adult and Youth
- Front pockets with inner valuables pocket inside left pocket
- Back pocket with zipper
- Tapered leg



BLACK
080



CARBON
HEATHER
039



GREY
HEATHER
013



NAVY
065



OLIVE
039



STORM
932



V-STREET





NEW

V-STREET FULL ZIP JACKET

223547 Adult
S-3XL

223647 Youth
S-XL

223747 Ladies
S-2XL

- 100% polyester double-knit
- Ladies' fit on style 223747
- Set-in sleeves
- Front pockets
- Dual inside pockets
- Striped rib-knit collar, cuffs and bottom band



ATHLETIC
HEATHER/
WHITE
152



BLACK/
WHITE
420



NAVY/
WHITE
301



ROYAL/
WHITE
280



SCARLET/
WHITE
408



WHITE/
ATHLETIC
HEATHER
510





MAYFIELD
UNIVERSITY

PANTHERS



WICKING FLEECE SHORT SLEEVE HOODIE

6871
S-4XL

Adult

- 5.9 ounce, 100% polyester performance wicking fleece with color secure® technology that helps prevent dye migration
- Tear away label
- Self-lined hood with drawcord
- Set-in sleeves
- Front pouch pocket
- Self-fabric bottom band
- Coordinating pants 5566/5568



ATHLETIC
GREY
009



BLACK
080



GRAPHITE
059



NAVY
065



ROYAL
060



SCARLET
083



WHITE
005



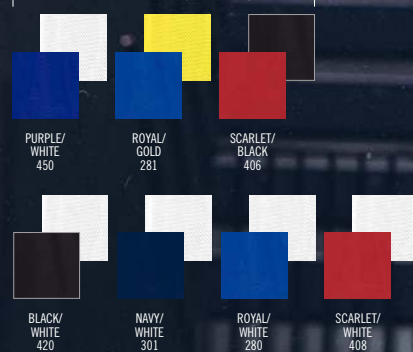
Available in Adult/Youth Only



Available in Adult/Youth Only



Available in Adult/Youth Only



REVERSIBLE





TRICOT MESH REVERSIBLE JERSEY 2.0

161 Adult
S-3XL

162 Youth
XXS-L

- Two layers of 100% polyester sports mesh with color secure® technology that helps prevent dye migration
- Outside locker label
- V-neck collar
- Each layer hemmed separately for easy embellishment



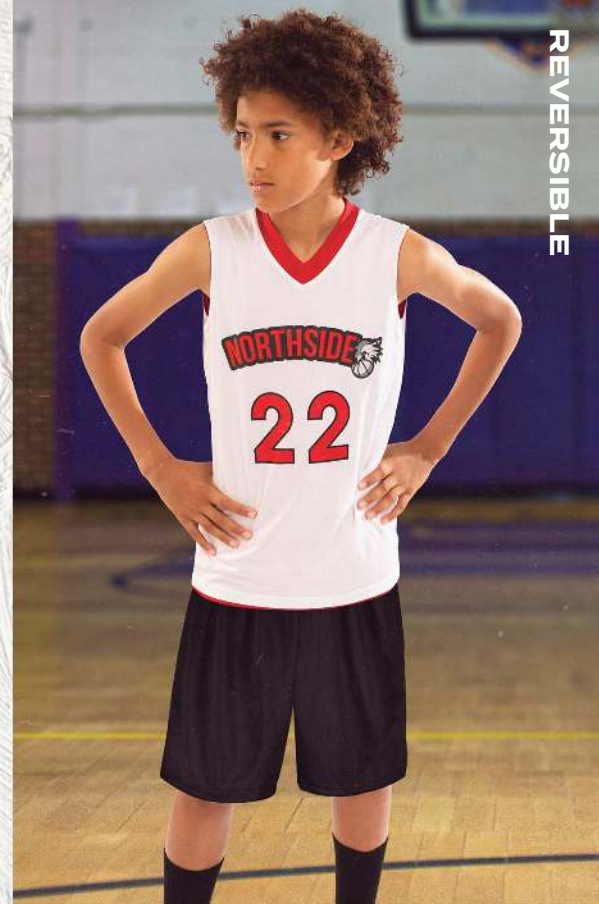
LADIES TRICOT MESH REVERSIBLE JERSEY 2.0

163 Ladies
XS-2XL

- Two layers of 100% polyester sports mesh with color secure® technology that helps prevent dye migration
- Outside locker label
- Racerback styling
- Each layer hemmed separately for easy embellishment

REVERSIBLE





REVERSIBLE



REVERSIBLE TWO-COLOR JERSEY

152 Adult
S-3XL

153 Youth
S-L

- 100% polyester wicking knit with color secure® technology that helps prevent dye migration
- Tear away label
- Each layer hemmed separately for easy embellishment



LADIES REVERSIBLE TWO-COLOR JERSEY

154 Ladies
S-2XL

- 100% polyester wicking knit with color secure® technology that helps prevent dye migration
- Tear away label
- Each layer hemmed separately for easy embellishment

Available in Adult/Youth Only



REVERSIBLE



MODIFIED MESH SHORTS

1850 Adult
S-4XL

1851 Youth
XXS-XL

- 100% polyester sports mesh with color secure® technology that helps prevent dye migration
- 100% polyester wicking knit lining with color secure® technology
- Tagless label
- Covered elastic waistband with inside drawcord
- 7-inch inseam
- Youth inseam graded





LONG SLEEVE COMPRESSION TEE

R20CPM Adult
S-3XL

- 84% polyester/16% spandex elastane Xtreme compression cloth with Coolcore® fabric technology
- 92% polyester/8% elastane stretch mesh inserts with Coolcore® fabric technology
- Garment protects against the sun with 50+ UPF
- Tagless label
- Raglan sleeves



BLACK
BLK

GRID IRON
SILVER
GSV

MAROON
MAR

NAVY
NAV



ROYAL
ROY

STEALTH
SHL

TRUE RED
TRR

WHITE
WHI



HALF SLEEVE COMPRESSION TEE

R21CPM Adult
S-3XL

- 84% polyester/16% spandex elastane Xtreme compression cloth with Coolcore® fabric technology
- 92% polyester/8% elastane stretch mesh insert on center back and underarm
- Garment protects against the sun with 50+ UPF
- Tagless label
- Raglan sleeves
- Dropped tail



BLACK
BLK

GRID IRON
SILVER
GSV

MAROON
MAR

NAVY
NAV



ROYAL
ROY

STEALTH
SHL

TRUE RED
TRR

WHITE
WHI



SLEEVELESS COMPRESSION TANK

R22CPM Adult
XS-3XL

- 84% polyester/16% spandex elastane Xtreme compression cloth with Coolcore® fabric technology
- 92% polyester/8% elastane stretch mesh inserts underarm
- Garment protects against the sun with 50+ UPF
- Tagless label
- Dropped tail



BLACK
BLK

GRID IRON
SILVER
GSV

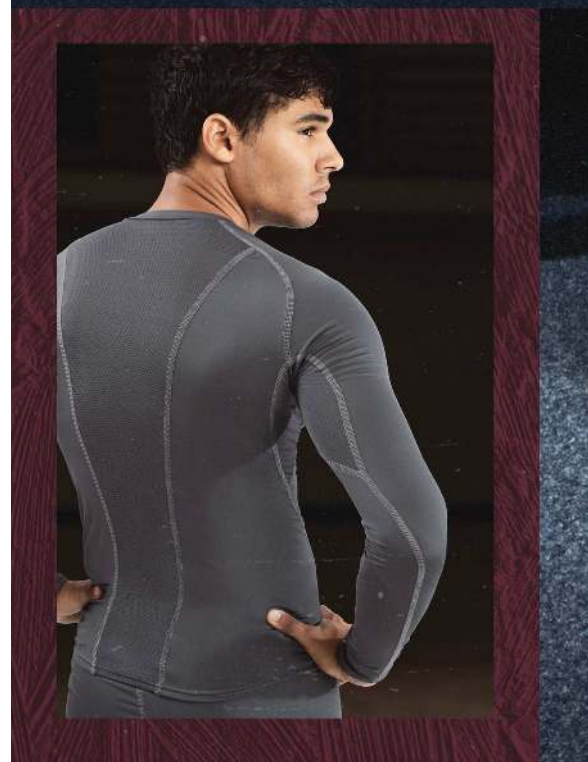
NAVY
NAV



ROYAL
ROY

TRUE RED
TRR

WHITE
WHI







COMPRESSION SHORTS

R24CPM Adult
XS-3XL

- 84% polyester/16% spandex elastane Xtreme compression cloth with Coolcore® fabric technology
- 92% polyester/8% elastane stretch mesh gusset
- Garment protects against the sun with 50+ UPF
- Ultra tight fit
- Tagless label
- Branded soft brushed back exposed elastic waistband provides comfort



BLACK
BLK

GRIDIRON
SILVER
GSV

WHITE
WHI



COMPRESSION 7/8 TIGHT

R23CPM Adult
XS-3XL

- 86% polyester/14% spandex elastane Xtreme compression cloth with Coolcore® fabric technology
- 92% polyester/8% elastane stretch mesh insert at back of knee and gusset
- Garment protects against the sun with 50+ UPF
- Ultra tight fit
- Tagless label
- Branded soft brushed back exposed elastic waistband provides comfort



BLACK
BLK

GRIDIRON
SILVER
GSV

WHITE
WHI



COMPRESSION FULL LENGTH TIGHT

R25CPM Adult
XS-3XL

- 84% polyester/16% spandex elastane Xtreme compression cloth with Coolcore® fabric technology
- 92% polyester/8% elastane stretch mesh insert at back of knee and gusset
- Garment protects against the sun with 50+ UPF
- Ultra tight fit
- Tagless label
- Branded soft brushed back exposed elastic waistband provides comfort



BLACK
BLK

GRIDIRON
SILVER
GSV

WHITE
WHI



**SHORT SLEEVE HOODIE
POWERED BY COOLCORE®**

222142 Adult
XS-3XL

- 88% polyester/12% elastane Coolcore® fabric with color secure® technology that helps prevent dye migration
- Garment protects against the sun with 50+ UPF
- Tagless label
- 3 panel crossover hood
- Set-in sleeves with rolled forward shoulder seam



**SLEEVELESS HOODIE
POWERED BY COOLCORE®**

222590 Adult
XS-3XL

- 88% polyester/12% elastane Coolcore® fabric with color secure® technology that helps prevent dye migration
- 92% polyester knitted mesh/8% elastane wicking knit inserts with Coolcore® fabric technology
- Garment protects against the sun with 50+ UPF
- Tagless label
- Overlapping hood
- Side insert pocket



**TANK POWERED
BY COOLCORE®**

222593 Adult
S-3XL

- 88% polyester/12% elastane Coolcore® fabric with color secure® technology that helps prevent dye migration
- Garment protects against the sun with 50+UPF
- Tagless label
- Rolled forward shoulder and side seam



**SHORTS POWERED
BY COOLCORE®**

222594 Adult
S-3XL MSRP 32.80

- 88% polyester/12% elastane Coolcore® fabric with color secure® technology that helps prevent dye migration
- 92% polyester knitted mesh/8% elastane wicking knit inserts with Coolcore® fabric technology
- Garment protects against the sun with 50+ UPF
- Tagless label
- Covered elastic waistband
- Side seam pockets
- 7-inch inseam



ATHLETIC
GREY
009

BLACK
080

DARK
GREEN
035

IRON
98D



MAROON
745

NAVY
065

OLIVE
039

ROYAL
060



SCARLET
083

WHITE
005



BLACK
080

IRON
98D

MAROON
745

NAVY
065



ROYAL
060

SCARLET
083

WHITE
005



BLACK
080

IRON
98D

MAROON
745

NAVY
065



ROYAL
060

SCARLET
083

WHITE
005



ATHLETIC
GREY
009

BLACK
080

IRON
98D



MAROON
745

NAVY
065

ROYAL
060



Warmth **5** / 10

Weight **Light**

**LEGEND
HOODED PULLOVER**

R20DSM Adult
S-4XL

- 90% polyester/10% spandex lightweight stretch woven fabric with durable water-repellent finish to keep you dry
- High collar, half-zip pullover style zipper garage
- 3-piece hood with drawcord
- Set-in sleeves
- Side zippered pockets
- Inside mesh valuables pocket
- Spandex bound cuffs
- Open bottom



BLACK
BLK



DK GREEN/
BLACK
ADJ



NAVY
NAV



ROYAL/
BLACK
72T



STEALTH
SHL



STEALTH/
BLACK
ANN



TRUE RED/
BLACK
A7B



WHITE/
NAVY
WNA



WHITE/
STEALTH
XDE



**LEGEND
STRETCH WOVEN SHORTS**

R20SWM Adult
S-4XL
5XL-6XL in select colors

- 90% polyester/10% spandex lightweight stretch woven fabric with durable water-repellent finish to keep you dry
- Micromesh inseam gusset
- Heat sealed label
- Covered elastic waistband with inside drawcord

Available in 5XL-6XL



BLACK
BLK



KHAKI
010



GRID IRON
SILVER
GSV



NAVY
NAV



STEALTH
SHL



LEGEND POLO

R20DKM Adult
S-4XL

R20DKX Ladies
S-3XL

- 4.4 ounce, 100% polyester 2-ply fabric with high mechanical stretch
- Micromesh interior collar stand for breathability around neck
- Dri-Power® Moisture Wicking Technology
- Ladies' fit on style R20DKX
- Heat sealed label
- Three-button placket with collar stay that helps maintain collar shape wash after wash
- Set-in sleeves
- Side vents



FOR CANADIAN PRICING AND INVENTORY DETAILS
VISIT WWW.AUGUSTASPORTSWEAR.CA



Warmth **2** / 10 Weight **Light**

MOMENTUM TEAM 1/4 ZIP PULLOVER

223500	Adult	S-4XL
223600	Youth	S-XL
223700	Ladies	S-3XL

- Dry-Excel™ 100% polyester interlock smooth knit with color secure® technology that helps prevent dye migration
- Garment protects against the sun with 45+ UPF
- Ladies' fit on style 223700
- Tagless label
- Set-in sleeves with angled shoulder seam for mobility and comfort

Available in Adult & Ladies only



BLACK/ DK GREEN 429	BLACK/ KELLY 90M	BLACK/ MAROON 486	BLACK/ ORANGE 423	BLACK/ PURPLE 487	GOLD/ ROYAL 240
---------------------------	------------------------	-------------------------	-------------------------	-------------------------	-----------------------

Available in Adult & Ladies only



IRON/ WHITE 99D	ORANGE/ NAVY 777	SCARLET/ NAVY W86	BLACK/ IRON 62U	BLACK/ ROYAL 426	BLACK/ SCARLET 500
-----------------------	------------------------	-------------------------	-----------------------	------------------------	--------------------------



BLACK/ WHITE 420	NAVY/ WHITE 301	ROYAL/ WHITE 280	SCARLET/ WHITE 408
------------------------	-----------------------	------------------------	--------------------------



POWERED BY
COOLCORE®



NEW

PERFORMANCE POLO POWERED BY COOLCORE®

222518	Adult	S-4XL
222701	Ladies	XS-3XL

- 88% polyester/12% elastane Coolcore® fabric with color secure® technology that helps prevent dye migration
- Garment protects against the sun with 50+ UPF
- Ladies' fit on style 222701
- Tagless label
- Three-button placket on Adult
- Self-fabric Johnny collar on Ladies'
- Set-in sleeves
- Side vents
- Contoured bottom on Ladies'



ATHLETIC GREY/ BLACK 160	BLACK/ WHITE 420	COLUMBIA BLUE/ WHITE 293	DARK GREEN/ WHITE 438	IRON/ WHITE 99D
-----------------------------------	------------------------	-----------------------------------	--------------------------------	-----------------------



KELLY/ WHITE 340	MAROON/ WHITE 380	NAVY/ WHITE 301	ORANGE/ WHITE 320	PURPLE/ WHITE 450
------------------------	-------------------------	-----------------------	-------------------------	-------------------------



ROYAL/ WHITE 280	SCARLET/ WHITE 408	WHITE/ BLACK 226
------------------------	--------------------------	------------------------



NEW

UNITED BACKPACK**327930**

11.5"W x 19"H x 9.5"D

- 600-denier polyester with PVC coating
- 210-denier nylon with PVC coating
- Large main interior compartment with two corded zipper pulls
- Large front ventilated compartment with two corded zipper pulls
- Zippered pocket with brushed interior for valuables
- Front pocket with corded zipper pull with hidden inside mesh ball holder that fits Volleyball, Soccer or Basketballs
- Two mesh side pockets
- Adjustable buckles on sides to secure baseball bat
- Internal zippered mesh valuables pocket
- Key clip inside main compartment
- Padded back for support and comfort
- Web handle at top of backpack
- Adjustable padded shoulder straps

BLACK
080GRAPHITE/
BLACK
172NAVY/
BLACK
308



augustasportswear.ca