

**Craftowne Homes**

Craftsman Style Architecture

(864) 654-5750



# The Contowne X

w/double garage

## Features:

- 4 bedrooms/2.5 baths & Loft
- Master on main
- Balcony open to living area
- Laundry room



Areas:

1st Floor: 1136 Sq. Ft.

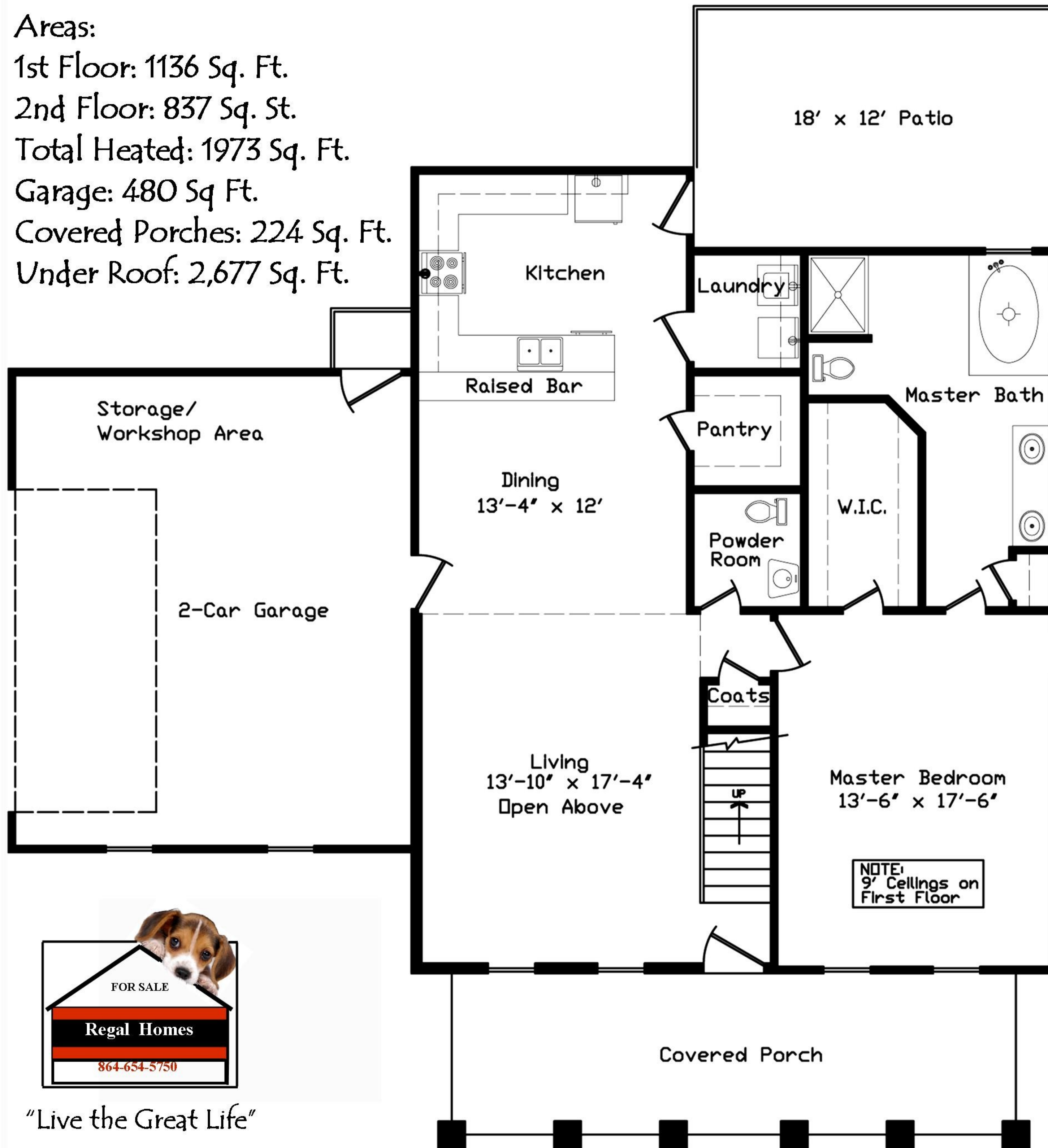
2nd Floor: 837 Sq. Ft.

Total Heated: 1973 Sq. Ft.

Garage: 480 Sq Ft.

Covered Porches: 224 Sq. Ft.

Under Roof: 2,677 Sq. Ft.



# The Contowne X

with Side Double Garage



- Features:
- 3 or 4 Bedrooms 2.5 Baths
  - Master on Main with:
    - Walk-in Closet
    - 2-Person Whirlpool
    - Double Vanity
  - Open Living/Dining/Kitchen
  - Balcony/Lloft-Lounge Overlook
  - Walk-in Laundry Room & Pantry
  - 9 Ft. ceilings (Down)

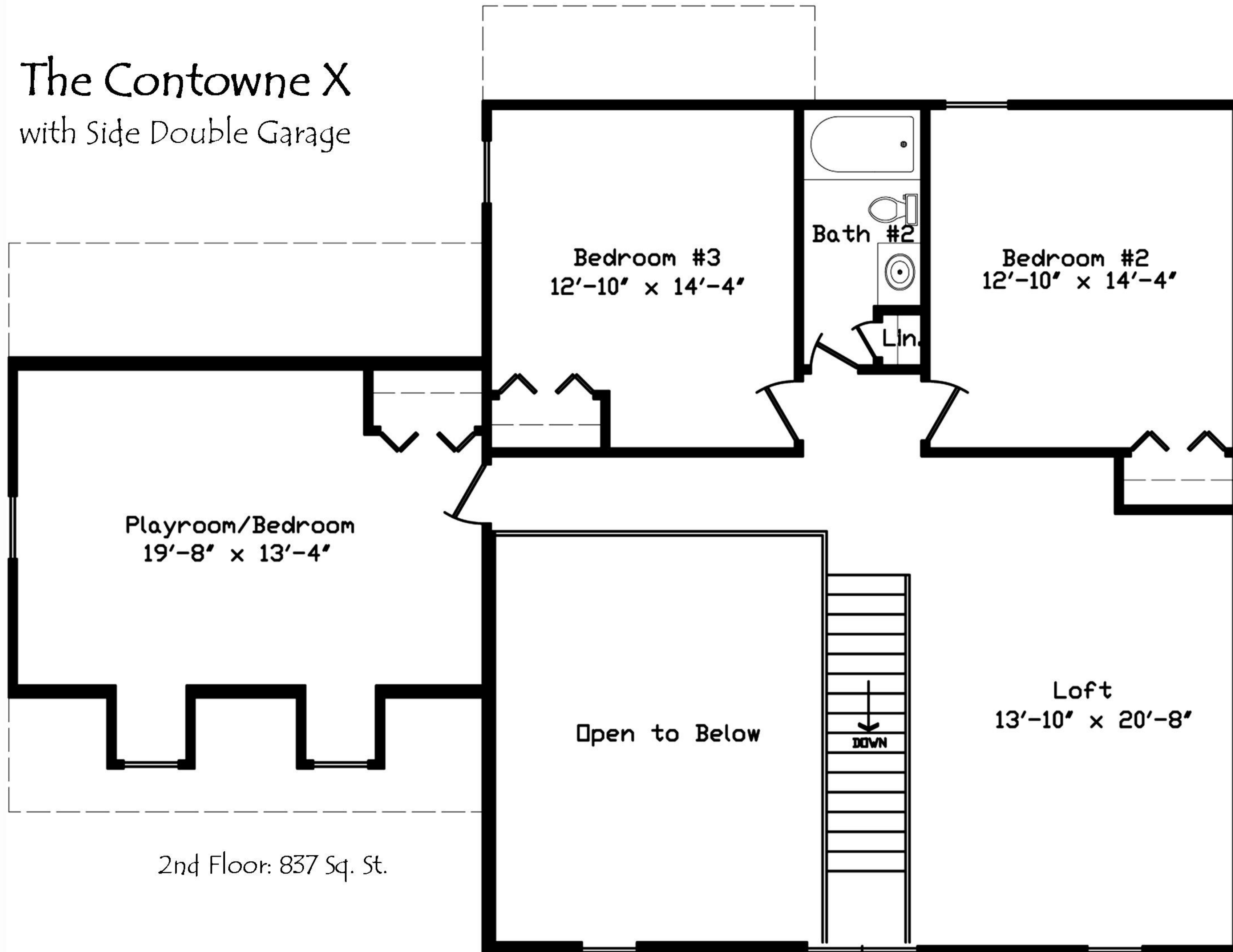


"Live the Great Life"



# The Contowne X

with Side Double Garage



2nd Floor: 837 Sq. St.

**Craftowne Homes**

"Distinctive Craftsman Style Homes"

FOR SALE

**Regal Homes**

864-654-5750

"Live the Great Life"















Master Bedroom



Walk-in Closet in Master





Master Bathroom





Master Bedroom







Open Loft/ Recreation room



Bedroom #2



Bedroom #2









Bedroom #2





Bedroom #3



Bedroom #3



Bedroom #4 or Bonus Room

