



The Covingtonne XII

Craftowne Homes

"Distinctive Craftsman Style Homes"



"Live The Great Life"

FOR SALE

Regal Homes

864-654-5750

A real estate sign with a white background and a black border. At the top, a beagle dog's head is peeking over the edge. The sign contains the text "FOR SALE" in black, "Regal Homes" in white on a black background, and the phone number "864-654-5750" in red.



The Covingtonne XII

Craftowne Homes

"Distinctive Craftsman Style Homes"



"Live The Great Life"





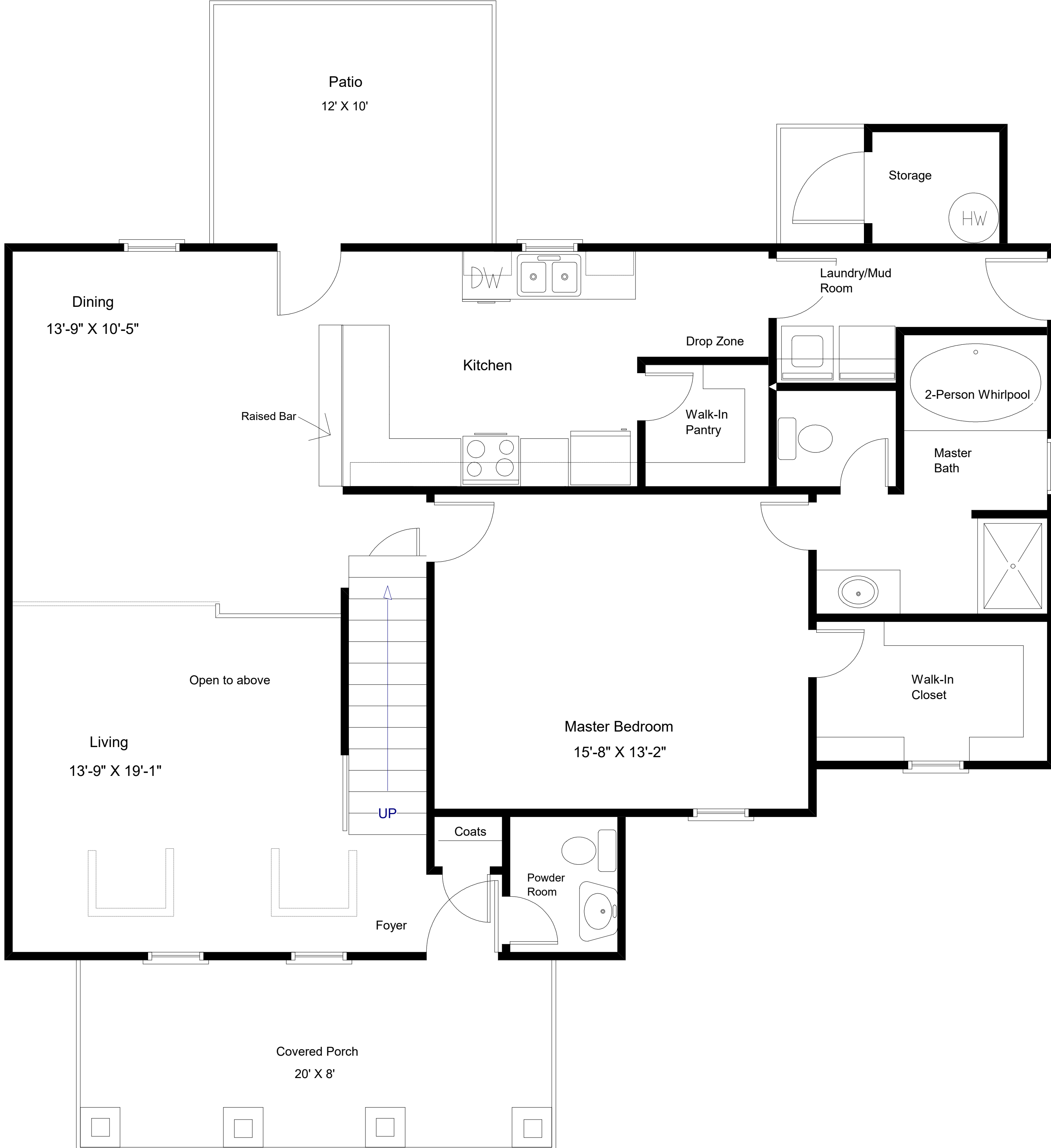
"Live The Great Life"

The Covingtonne XII

1st Floor Living Area: 1192 Sq. Ft.
 2nd Floor Living Area: 598 Sq. Ft.
 Total Living Area: 1790 Sq. Ft.
 Covered Porch Area: 160 Sq. Ft.
 Storage Area: 30 Sq. Ft.
 Total Area Under Roof: 1980 Sq. Ft.



"Distinctive Craftsman Style Homes"

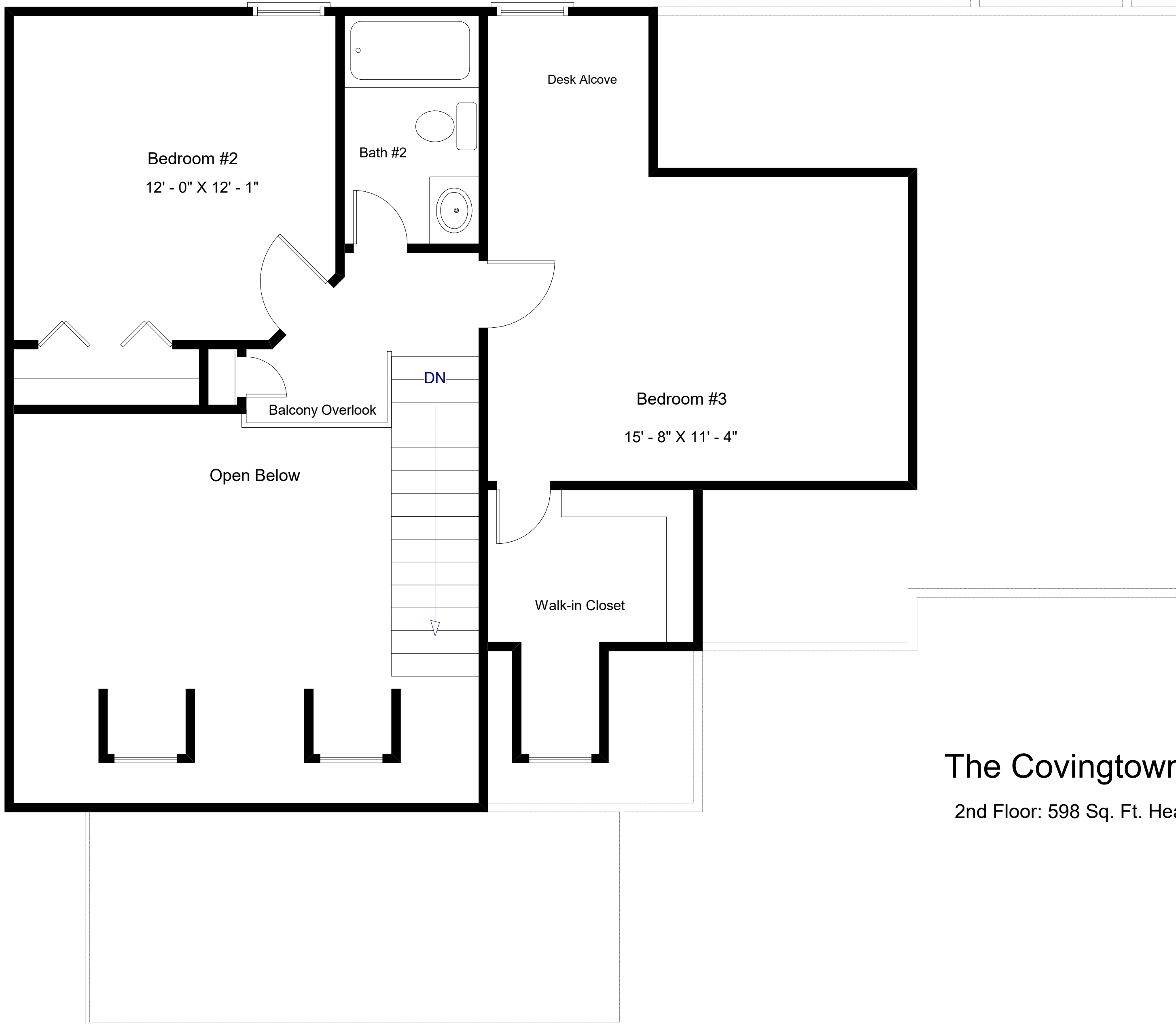


Craftowne Homes

"Distinctive Craftsman Style Homes"



"Live The Great Life"



The Covington XII

2nd Floor: 598 Sq. Ft. Heated Area