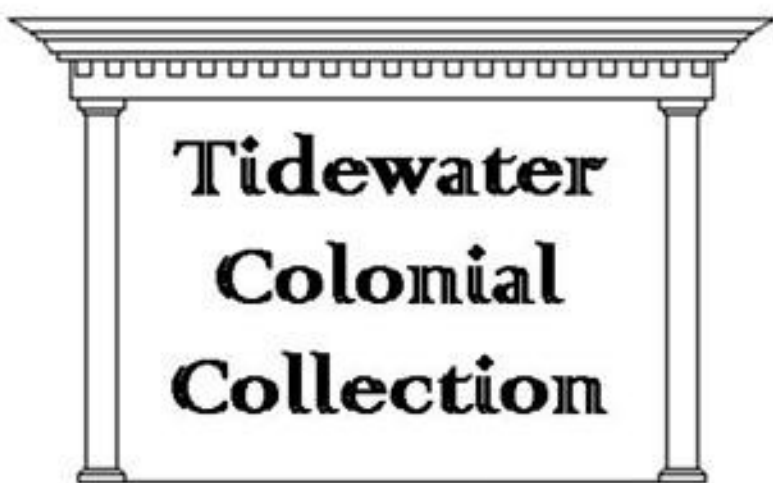




The Port Royal XVI

with Double Garage

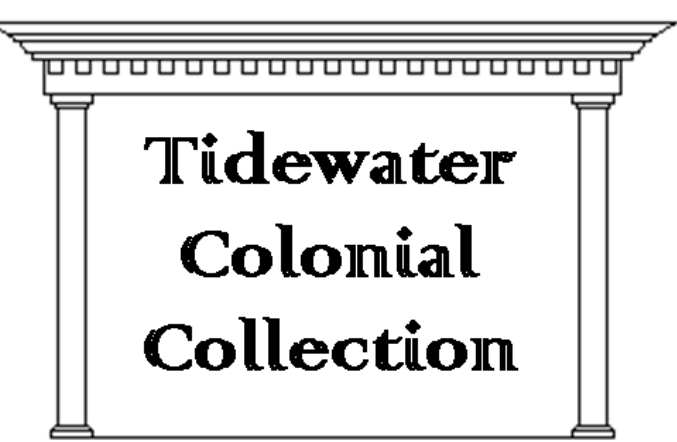


"Distinctive Architecture"



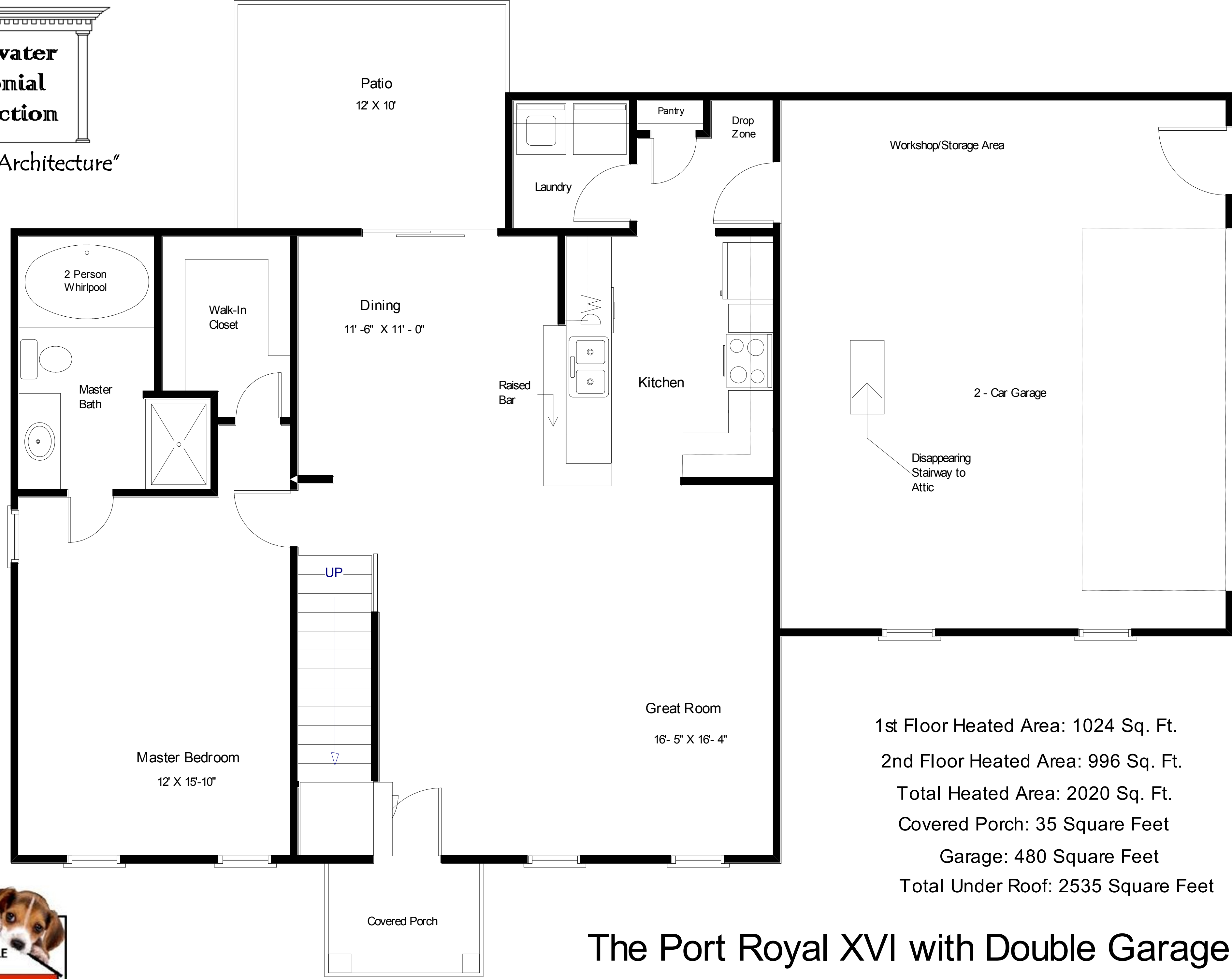
"Live the Great Life"





**Tidewater
Colonial
Collection**

"Distinctive Architecture"

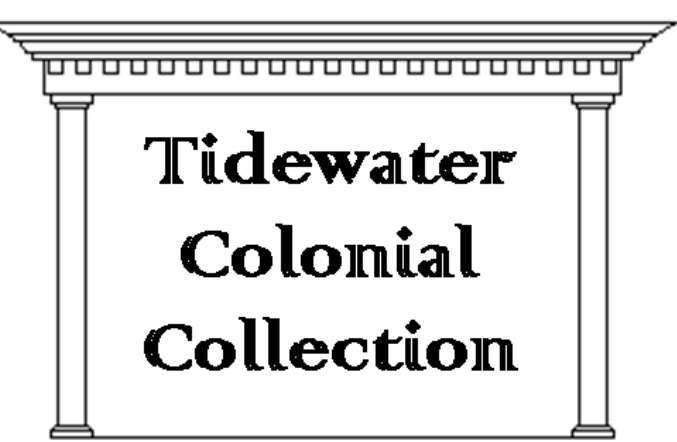


1st Floor Heated Area: 1024 Sq. Ft.
 2nd Floor Heated Area: 996 Sq. Ft.
 Total Heated Area: 2020 Sq. Ft.
 Covered Porch: 35 Square Feet
 Garage: 480 Square Feet
 Total Under Roof: 2535 Square Feet

The Port Royal XVI with Double Garage

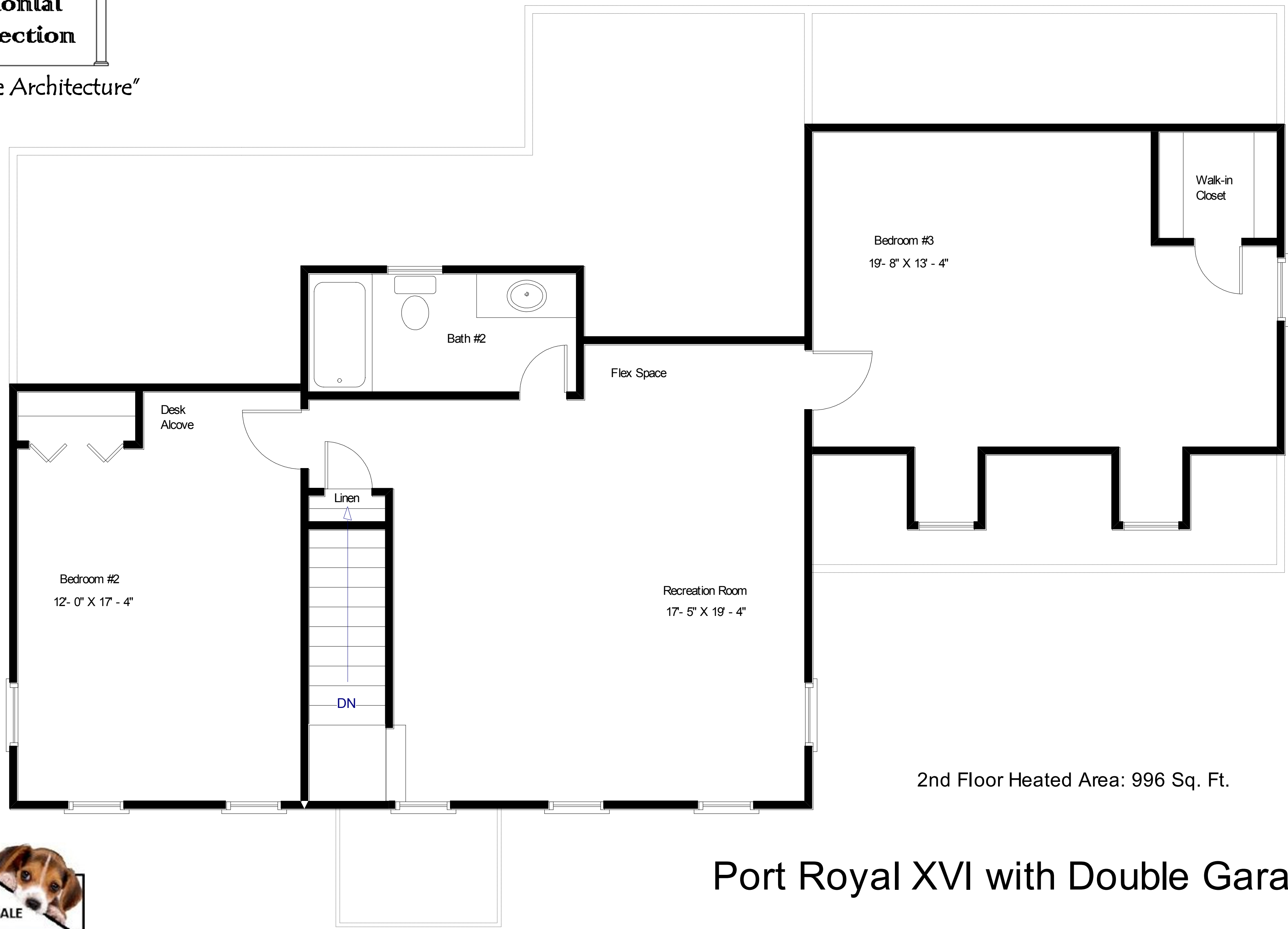


"Live The Great Life"



**Tidewater
Colonial
Collection**

"Distinctive Architecture"



Port Royal XVI with Double Garage



"Live The Great Life"