



The Port Wentworth V with Side Garage



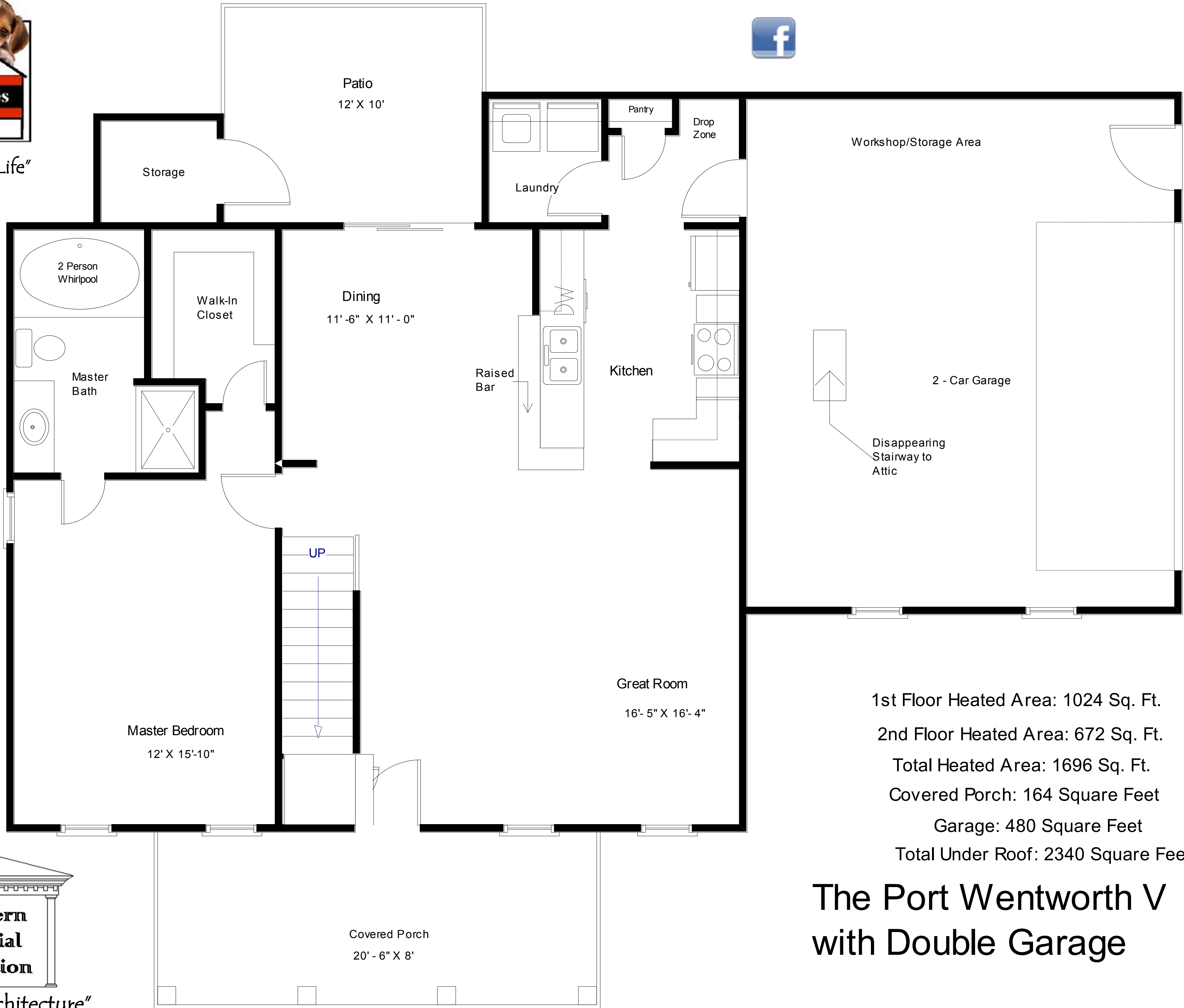
"Distinctive Architecture"



"Live The Great Life"



"Live The Great Life"



1st Floor Heated Area: 1024 Sq. Ft.
 2nd Floor Heated Area: 672 Sq. Ft.
 Total Heated Area: 1696 Sq. Ft.
 Covered Porch: 164 Square Feet
 Garage: 480 Square Feet
 Total Under Roof: 2340 Square Feet

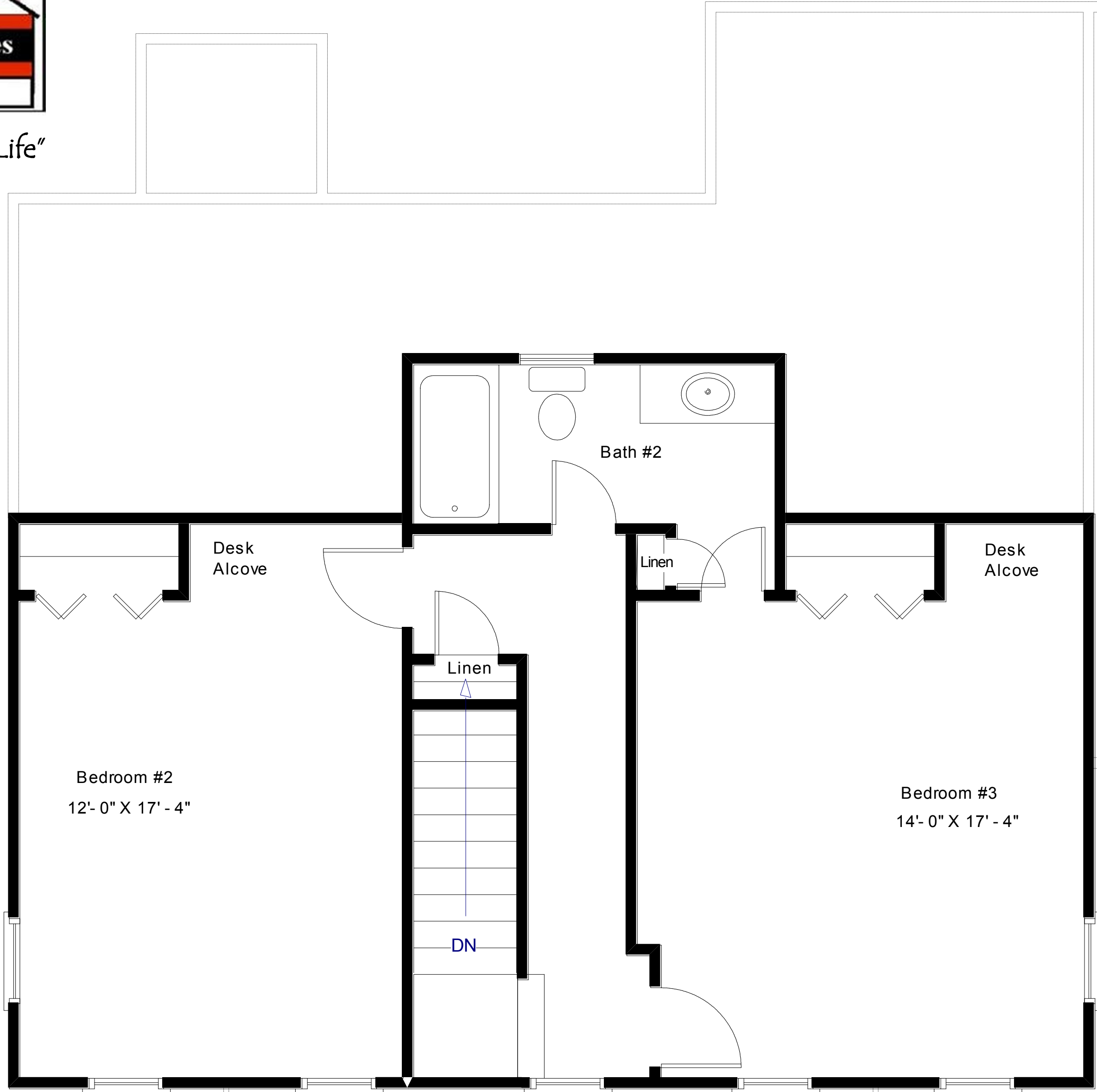
The Port Wentworth V with Double Garage



"Distinctive Architecture"



"Live The Great Life"



2nd Floor Heated Area: 672 Sq. Ft.

Port Wentworth V with Double Garage



"Distinctive Architecture"