

Exhibit 323


Surging leukemia diagnoses, sudden happening among children and young adults, is this due to the Pfizer and Moderna COVID mRNA technology gene injections' Lipid-nano particles (Makis)

<https://palexander.substack.com/p/surging-leukemia-diagnoses-sudden>

Surging leukemia diagnoses, sudden, happening among children and young adults; is this due to the Pfizer and Moderna COVID mRNA technology gene injections? Lipid-nano particles (Makis)

Lipid-nano particles (LNPs) that accumulate in bone marrow, as well as adrenals, testis, ovaries, spleen, liver as per Japanese biodistribution study? The LNPs carrying the mRNA payload causing it?



Dr. Paul Alexander 
Mar 8

 134

 55



This topic is very troubling and raises many urgent issues. I like others who are leading the fight against these fraud deadly mRNA technology injections, are very concerned as to the accumulation of the vaccine content e.g. mRNA, lipid-nano particles, resultant spike protein and it's sub-units (S1, S2) etc. in the testes, ovaries, endometrium, spleen, adrenals, lung, bone marrow etc. Is what is presented below just the tip of the ice-berg?

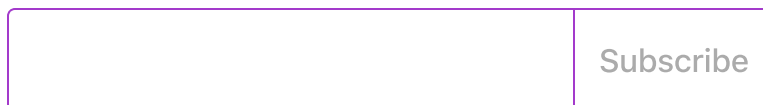
Dr. Makis provides a cogent explanation and summary of recent leukemia cases in young persons (children) and this is very very tragic e.g. bone marrow damage, bone marrow suppression, aplastic anemia or leukemia, that seems linked to the mRNA COVID gene injection.

I share and see substack below.

But first see the Japanese biodistribution study data below of where and how rapidly the LNPs-mRNA accumulates and in which tissue predominately (I know you have seen this prior):

Alexander COVID News-Dr. Paul Elias
Alexander's Newsletter is a reader-supported

publication. To receive new posts and support my work, consider becoming a free or paid subscriber.



2.6.5.5B. PHARMACOKINETICS: ORGAN DISTRIBUTION CONTINUED

Test Article: [³H]-Labelled LNP-mRNA formulation containing ALC-0315 and ALC-0159
Report Number: 185350

Species (Strain):	Rat (Wistar Han)													
Sex/Number of Animals:	Male and female/3 animals/sex/timepoint (21 animals/sex total for the 50 µg dose)													
Feeding Condition:	Fed ad libitum													
Method of Administration:	Intramuscular injection													
Dose:	50 µg [³ H]-08-A01-C0 (lot # NC-0552-1)													
Number of Doses:	1													
Detection:	Radioactivity quantitation using liquid scintillation counting													
Sampling Time (hour):	0.25, 1, 2, 4, 8, 24, and 48 hours post-injection													
Sample	Mean total lipid concentration (µg lipid equivalent/g (or mL) (males and females combined)							% of administered dose (males and females combined)						
	0.25 h	1 h	2 h	4 h	8 h	24 h	48 h	0.25 h	1 h	2 h	4 h	8 h	24 h	48 h
Adipose tissue	0.057	0.100	0.126	0.128	0.093	0.084	0.181	--	--	--	--	--	--	--
Adrenal glands	0.271	1.48	2.72	2.89	6.80	13.8	18.2	0.001	0.007	0.010	0.015	0.035	0.066	0.106
Bladder	0.041	0.130	0.146	0.167	0.148	0.247	0.365	0.000	0.001	0.001	0.001	0.001	0.002	0.002
Bone (femur)	0.091	0.195	0.266	0.276	0.340	0.342	0.687	--	--	--	--	--	--	--
Bone marrow (femur)	0.479	0.960	1.24	1.24	1.84	2.49	3.77	--	--	--	--	--	--	--
Brain	0.045	0.100	0.138	0.115	0.073	0.069	0.068	0.007	0.013	0.020	0.016	0.011	0.010	0.009
Eyes	0.010	0.035	0.052	0.067	0.059	0.091	0.112	0.000	0.001	0.001	0.002	0.002	0.002	0.003
Heart	0.282	1.03	1.40	0.987	0.790	0.451	0.546	0.018	0.056	0.084	0.060	0.042	0.027	0.030
Injection site	128	394	311	338	213	195	165	19.9	52.6	31.6	28.4	21.9	29.1	24.6
Kidneys	0.391	1.16	2.05	0.924	0.590	0.426	0.425	0.050	0.124	0.211	0.109	0.075	0.054	0.057
Large intestine	0.013	0.048	0.093	0.287	0.649	1.10	1.34	0.008	0.025	0.065	0.192	0.405	0.692	0.762
Liver	0.737	4.63	11.0	16.5	26.5	19.2	24.3	0.602	2.87	7.33	11.9	18.1	15.4	16.2
Lung	0.492	1.21	1.83	1.50	1.15	1.04	1.09	0.052	0.101	0.178	0.169	0.122	0.101	0.101

Start here:



Tech > Gaming

HARD BATTLE Who is Kyedae Shymko and what was she diagnosed with?

Tereza Shkurtaj

Published: 17:22 ET, Mar 6 2023 | Updated: 17:31 ET, Mar 6 2023



STREAMING star, Kyedae Shymko, has gained massive popularity on Twitch ever since joining the gaming platform in October 2020.

In March 2023, the YouTuber updated her loyal community with some



Kyedae Shymko is a popular Twitch streamer and YouTuber Credit: Instagram/@kyedae

A few days ago, on March 2, 2023, Kyedae Shymko, a 21 year old Japanese-Canadian Twitch streamer with 2.2 million followers (and 1 million on Twitter), announced that she was diagnosed with cancer - Acute Myeloid Leukemia ([click here](#))

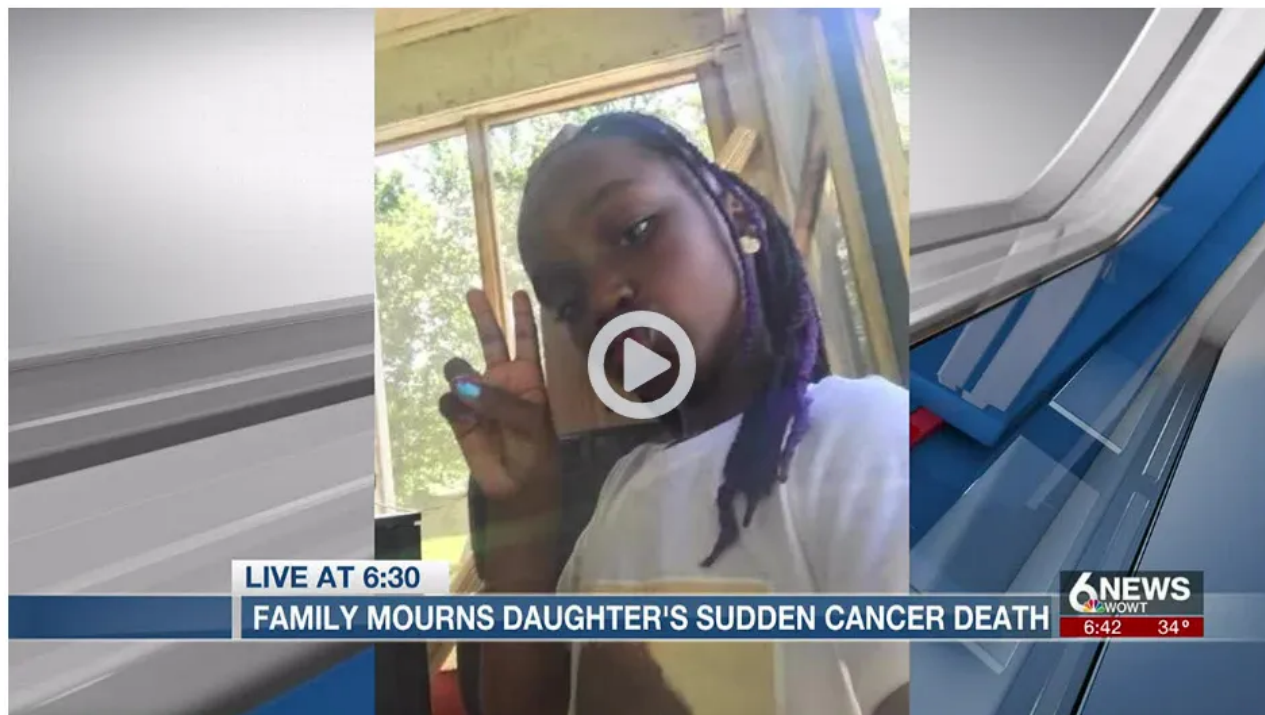
Shockingly, cases like this are skyrocketing recently among children and young adults, and even more shocking is the rapid progression of disease in some of these cases.

Kavieriona White, 11 year old girl died two days after leukemia diagnosis (Feb.16, 2023)



First Alert Weather 24/7 Weather Sports We Are Local Omaha Everyday Contact Us

Family loses 11-year-old daughter to acute-onset leukemia



An Omaha father is mourning the sudden loss of his 11-year-old daughter. Doctors say it was leukemia.

Also, a few days ago, 11 year old Kavieriona died suddenly after being diagnosed with Leukemia just a few days prior ([click here](#))

It started when she was sent home from school with a fever. A few days later she was found unresponsive, rushed to hospital where she was diagnosed with leukemia and she died two days later.

“The blood disease was leukemia. The doctor informed me it was treatable and curable but the main problem was the brain bleeds”

Julia Chavez, 13 year old girl died hours after leukemia diagnosis (Feb.13, 2023)



Julia Chavez, 13, died hours after she was diagnosed with leukemia when she went to the ER with a headache and ear infection

“A 13-year-old girl from Georgia died hours after she was diagnosed with leukemia when she went to the ER with a headache and ear infection.” ([click here](#))

“she had bleeding in her brain, lungs, stomach' and throughout her body.”

'We never knew she had it,' Jenna told the news outlet. 'She never had more than a sniffle and she's never been hospitalized for anything since she was born.'

Evan Fishel, age 21, died 4 days after leukemia diagnosis (Feb.10, 2023)

Evan Fishel, Celebration of Life & Expenses Fund



\$31,950 USD raised

196 donations

Share

Donate

- Anonymous \$30 • 7 hrs
- Jeff Fyke \$20 • 2 d
- Raquelle Nelsc \$100 • 3 d



See all



Shawna Saari is organizing this fundraiser on behalf of Suzyn Card.

On February 10th, our much loved Evan Fishel passed away after a short battle with Leukemia that had only been diagnosed 4 days prior. We want to help his mother, Suzyn Card, navigate expenses related to his sudden passing. This is devastating to us all, as Evan was only 21 and had a bright future ahead. He was graduating from Cal Maritime Academy

A young artist diagnosed with Leukemia (Feb.24, 2023)



Justin Tine
@acupofrain

Artist. ALL work i post is FOR SALE & i ship anywhere. working on a large collection of art to be released by April. website is down, justintine988@gmail.com

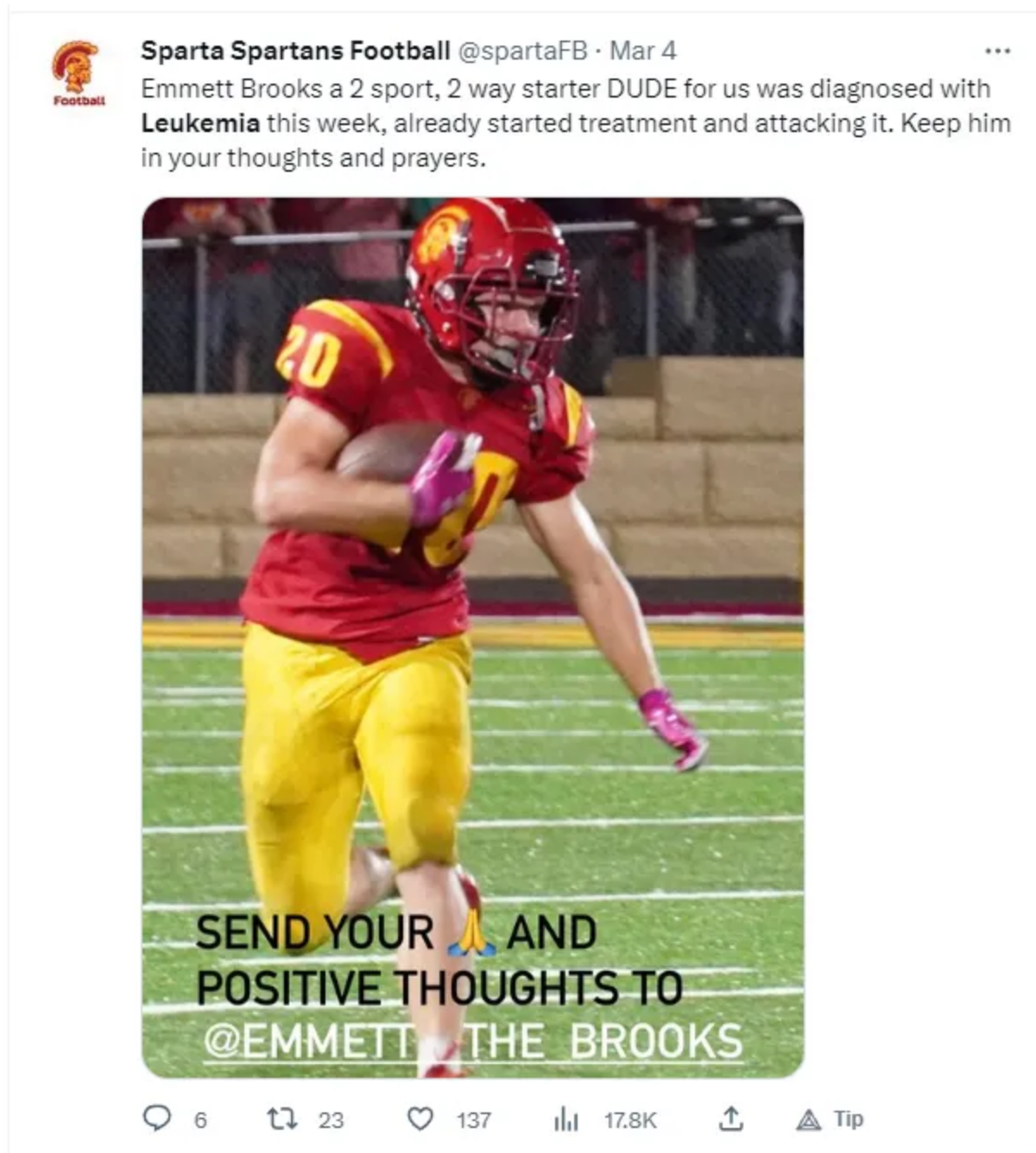
📍 Connecticut 📅 Joined July 2012

17K Following 21.2K Followers

... 📧 Follow

A young artist who goes by the name “Justin Tine” on Twitter announced on Feb.24, 2023 he has aggressive leukemia and may not proceed with chemo ([click here](#))

High School football player Emmett Brooks



Why the rapid progression?

Leukemia tends to be aggressive, however, it's extremely unusual to have sudden death occur days or hours after diagnosis and initial presentation. Why are these highly aggressive cases happening with such frequency now?

The elephant in the room is this question: are these leukemias being caused by COVID-19 mRNA vaccines?

21 year old Kyedae was COVID-19 vaccinated (travel, events requiring proof of vaccination, her fiancee TenZ was fully vaccinated). (click here)(click here)

21 year old Evan Fishel was COVID-19 vaccinated due to mandate by his University.

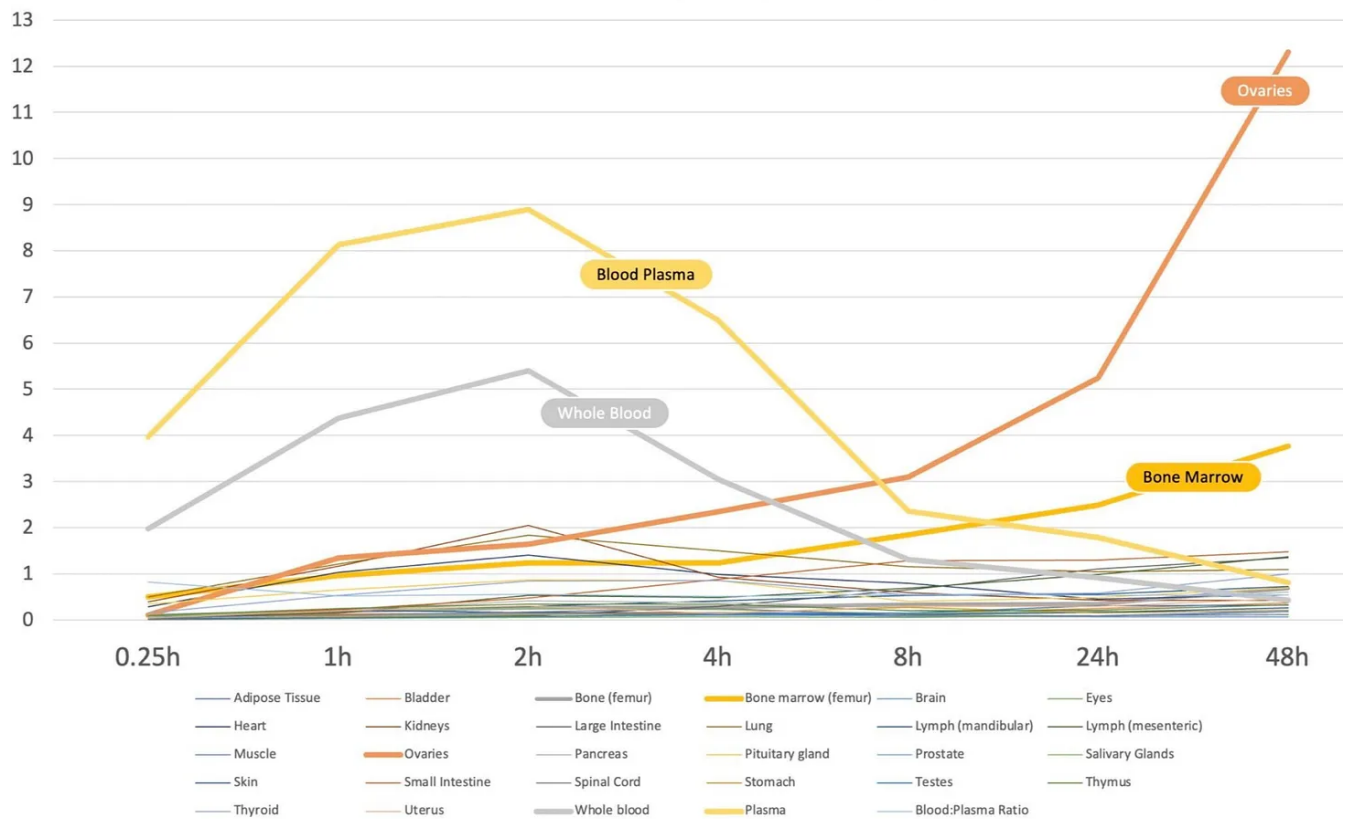
High School footballer Emmett Brooks was presumed COVID-19 vaccinated.

For the others, COVID-19 vaccine status is unknown.

COVID-19 mRNA vaccines deliver LNPs with mRNA to the bone marrow

It is no secret that COVID-19 mRNA vaccines deliver a substantial amount of LNPs to the bone marrow.

Organ bio-distribution study: post-vaccination total lipid concentrations, mL
Pfizer mRNA Vaccine BNT162, PF-07302048
Obtained under Freedom of Information - Japanese Regulator (Byrum Bridle) <https://files.catbox.moe/0vwcmj.pdf>



2.6.5.5B. PHARMACOKINETICS: ORGAN DISTRIBUTION CONTINUED

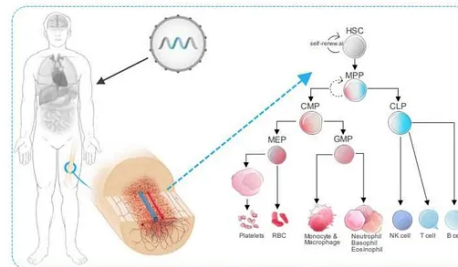
Test Article: [³H]-Labelled LNP-mRNA formulation containing ALC-0315 and ALC-0159
Report Number: 185350

Sample	Mean total lipid concentration (µg lipid equivalent/g (or mL) (males and females combined))							% of administered dose (males and females combined)						
	0.25 h	1 h	2 h	4 h	8 h	24 h	48 h	0.25 h	1 h	2 h	4 h	8 h	24 h	48 h
	Adipose tissue	0.057	0.100	0.126	0.128	0.093	0.084	0.181	--	--	--	--	--	--
Adrenal glands	0.271	1.48	2.72	2.89	6.80	13.8	18.2	0.001	0.007	0.010	0.015	0.035	0.066	0.106
Bladder	0.041	0.130	0.146	0.167	0.148	0.247	0.365	0.000	0.001	0.001	0.001	0.001	0.002	0.002
Bone (femur)	0.091	0.195	0.266	0.276	0.340	0.342	0.687	--	--	--	--	--	--	--
Bone marrow (femur)	0.479	0.960	1.24	1.24	1.84	2.49	3.77	--	--	--	--	--	--	--
Brain	0.045	0.100	0.138	0.115	0.073	0.069	0.068	0.007	0.013	0.020	0.016	0.011	0.010	0.009
Eyes	0.010	0.035	0.052	0.067	0.059	0.091	0.112	0.000	0.001	0.001	0.002	0.002	0.002	0.003
Heart	0.282	1.03	1.40	0.987	0.790	0.451	0.546	0.018	0.056	0.084	0.060	0.042	0.027	0.030
Injection site	128	394	311	338	213	195	165	19.9	52.6	31.6	28.4	21.9	29.1	24.6
Kidneys	0.391	1.16	2.05	0.924	0.590	0.426	0.425	0.050	0.124	0.211	0.109	0.075	0.054	0.057
Large intestine	0.013	0.048	0.093	0.287	0.649	1.10	1.34	0.008	0.025	0.065	0.192	0.405	0.692	0.762
Liver	0.737	4.63	11.0	16.5	26.5	19.2	24.3	0.602	2.87	7.33	11.9	18.1	15.4	16.2
Lung	0.492	1.21	1.83	1.50	1.15	1.04	1.09	0.052	0.101	0.178	0.169	0.122	0.101	0.101

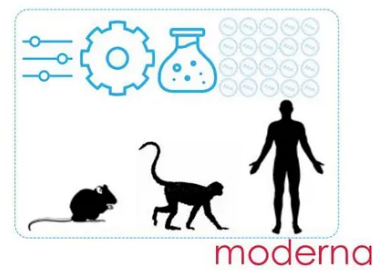
And yes, Moderna has boasted about their ability to deliver mRNA to the bone marrow, causing “long term modulation of all hematopoietic lineages” ([click here](#)):

Summary

- We have established in vivo mRNA delivery to the bone marrow, leading to HSPC transfection and long-term modulation of all hematopoietic lineages



- Different LNP formulations and repeat dosing can enhance transfection of mouse and NHP bone marrow HSPC, as well as human HSPC in humanized-mouse model systems



Slide 113

Leukemia is a broad term for cancers of the body's blood-forming tissues, including the bone marrow and the lymphatic system. Leukemia usually involves the white

blood cells. In people with leukemia, the bone marrow produces an excessive amount of abnormal white blood cells, which don't function properly ([click here](#)).

The fact that Pfizer and Moderna COVID-19 mRNA vaccines deliver a large payload of LNPs filled with mRNA to the bone marrow, is a very serious concern.

How many doctors informed their patients that their COVID-19 mRNA vaccines will be getting into their bone marrow where they will be producing the SARS-CoV2 spike protein with unpredictable consequences? That would be part of **informed consent**, which no COVID-19 vaccinated person received.

Leukemia and COVID-19 mRNA vaccines

A woman in her 60s was diagnosed with a rare Leukemia 6 days after 1st dose of Moderna COVID-19 mRNA vaccine ([click here](#)).

Authors found that the Moderna mRNA activated her immune system TLR-3 receptors, which then activated IL-6/STAT3 pathway which then caused her leukemia.

“novel mRNA vaccines were modified to dampen RNA-mediated TLR-3 activation”

“However, even modified mRNA vaccines activate innate immunity *via* TLR-3. We confirmed TLR-3 activation...our data suggest that the mRNA-1273 activates (innate) immune cells *via* TLR to secrete IL-6”

In this case, the Moderna mRNA did the opposite of what it was designed to do (dampen TLRs to bypass the innate immune system so the mRNA doesn't get immediately destroyed), instead it unpredictably activated immune receptors that caused a leukemia in this unfortunate patient.

COVID-19 mRNA Vaccines destroy the bone marrow

There are numerous reports of bone marrow suppression ([click here](#)) or severe immune aplastic anemia after mRNA vaccination ([click here](#)).

Aplastic anemia is a rare form of bone marrow failure, when your bone marrow stops producing new blood cells. The condition leaves you fatigued and more prone to

infections and uncontrolled bleeding.

Severe aplastic anemia caused by Pfizer mRNA vaccine can require stem cell transplantation ([click here](#)).

Interestingly Pfizer mRNA vaccine can not only cause relapse in patients who previously had aplastic anemia, but Pfizer mRNA can cause “**de novo**” cases of aplastic anemia, or “**acquired aplastic anemia**” ([click here](#))

“our observation demonstrates for the first time in literature in a substantial number of patients in stable hematologic remission a risk for relapse of AA in timed context to COVID-19 vaccination”

“all relapsed patients were vaccinated with the mRNA-based vaccine Comirnaty®”

“our data highlight the risk for contracting aplastic anemia as a potential complication following vaccination against SARS-CoV-2 (vaccine-related adverse event).”

My Take...

These cases of sudden onset aggressive leukemia are frightening. Some of these tragic cases show extremely rapid progression where the time from initial presentation and diagnosis to sudden death is a matter of a few days or even hours, as in the case of Julia Chavez.

I am deeply concerned about the ability of Pfizer and Moderna mRNA vaccines to accumulate in the bone marrow in significant amounts.

This is not being disclosed by doctors to patients who are being COVID-19 vaccinated and thus there is no discussion of the serious risks of bone marrow damage, bone marrow suppression, aplastic anemia or leukemia, that is posed by COVID-19 mRNA vaccines.

Where there is no discussion of well known and potentially life-threatening risks, there is no possibility for proper informed consent.

I fear that we are only starting to see some of the consequences of Pfizer or Moderna COVID-19 vaccines with LNPs filled with mRNA being delivered to the bone marrow.'



COVID Intel - by Dr. William Makis

21 year old Twitch star Kyedae Shymko was diagnosed with leukemia - a blood cancer that is skyrocketing among children & young adults

There is an increasing number of sudden leukemia diagnoses among children and young adults. What is going on? A few days ago, on March 2, 2023, Kyedae Shymko, a 21 year old Japanese-Canadian Twitch streamer with 2.2 million followers (and 1 million on Twitter), announced that she was diagnosed with cancer - Acute Myeloid Leukemia...

[Read more](#)

4 days ago · 28 likes · 3 comments · Dr. William Makis MD

Alexander COVID News-Dr. Paul Elias
Alexander's Newsletter is a reader-supported publication. To receive new posts and support my work, consider becoming a free or paid subscriber.

[Subscribe](#)

55 Comments



Write a comment...



Joseph Daoud Writes Joseph's Newsletter Mar 8

I firmly believe the higher rates of leukemia have to do with upgrades to high energy mm wavelength emf emitting cellular towers all across the world. These upgrades to 5G and which began rolling out early 2020, are estimated to increase the intensity and frequency from 8Ghz, to 20Ghz for the initial rollout. It is expected that some "smart" cities being developed as we speak all around the world, will reach to 60Ghz or higher of constant exposure from 5G and higher radiofrequency technology.

Yes, the vaccines, if they contain nanographene particles as well as aluminum adjuvants will certainly amplify the effect of this higher energy EMF technology, similar to like placing an aluminum foil in a microwave.

Let's not forget that the WHO has classified exposure to EMF and low-level EMF are classified as a possible carcinogen, which includes leukemia.

♡ LIKE (14) 💬 REPLY ...

13 replies



Robin Mar 8 · *edited Mar 8*

Oddly a friend of mine (unvaxxed) just got Leukemia himself.

So the next question might be...

Since shedding is becoming a possibility (yes Margaret, do your homework on Exosomes and read this FDA Paper "Design and Analysis of Shedding Studies for Virus or Bacteria-Based Gene Therapy and Oncolytic Products" from 2015:

<https://www.fda.gov/media/89036/download>

Could Leukemia be caused by this shedding? Unvaxxed friend was very, very fit, active, ran a gym and spent copious amounts of time indoors most likely with sweating vaccinated people).

♡ LIKE (11) 💬 REPLY ...

2 replies

53 more comments...

© 2023 Paul • [Privacy](#) • [Terms](#) • [Collection notice](#)
[Substack](#) is the home for great writing