



WHEN MOBILITY AND DEPENDABILITY MATTERS

MODEL 943-1

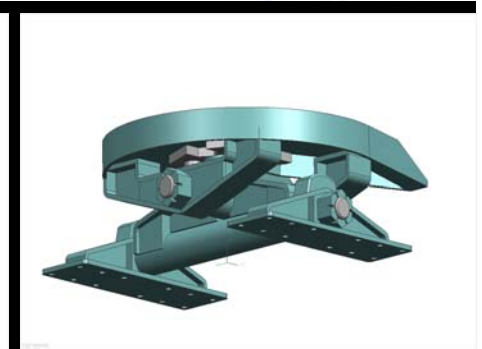
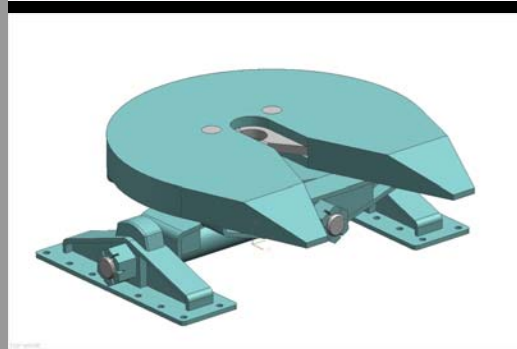
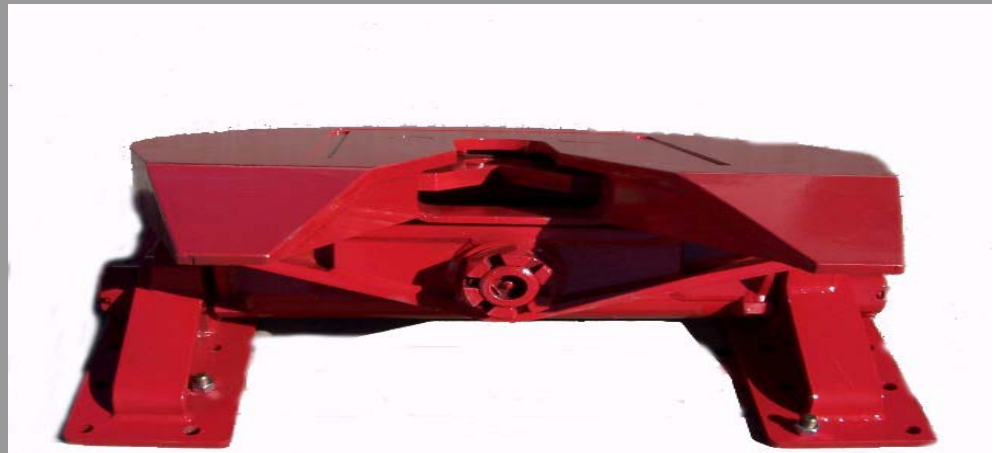
HEAVY DUTY FIFTH WHEEL

FEATURES:

- DOUBLE OSCILLATING
- JAW TYPE
- 3 1/2 INCH SAE KING PIN
- HIGH TENSIL STEEL
- CUSTOM MOUNTING
- INDUSTRIAL COATING

SPECIFICATIONS

Overall Length: 39 inch (99 cm)
Width: 41.25 inch (105 cm)
Height: 13.75 inch (35 cm)
Weight: 1050 lbs (476 kg)
Pull Capacity: 500,000 lbs (227,000 kg)
Vertical Load: 300,000 lbs (136,000 kg)



As a result of EIDAL INTERNATIONALS need for an extreme duty Fifth Wheel Coupler for its Heavy Duty Transporters for on and off road terrain, EIDAL designed and developed the proven EIDAL Model 943-1. The EIDAL Model 943-1 is a heavy duty Jaw Type coupler with a 300,000 lbs vertical load capacity designed to rock from side to side and front to aft providing load stability

EIDAL INTERNATIONAL

Phone: 702-551-1174

E-mail : sales@eidalinternational.com

