



WHEN MOBILITY AND DEPENDABILITY MATTERS

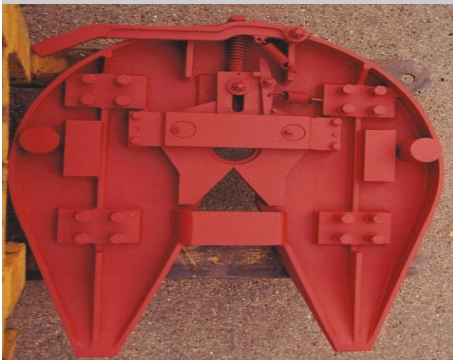
MODEL 1167-1 HEAVY DUTY FIFTH WHEEL

FEATURES:

- SINGLE OSCILLATING
- ROCK LOCK
- 3 1/2 INCH SAE KING PIN
- HIGH TENSIL STEEL
- CUSTOM MOUNTING
- INDUSTRIAL COATING

SPECIFICATIONS

Overall Length: 43 inch (109 cm)
Width: 32.5 inch (82.5 cm)
Height: 8.5 inch (21.5 cm)
Weight: 755 lbs (342 kg)
Pull Capacity: 500,000 lbs (227,000 kg)
Vertical Load: 250,000 lbs (113,400 kg)



As a result of EIDAL'S need for an extreme duty Fifth Wheel Coupler for its on and off road Heavy Duty Transporters, EIDAL designed and developed the proven EIDAL Model 1167-1. The EIDAL Model 1167-1 is a heavy duty Jaw Type coupler with a 500,000 lbs pull and 250,000 lbs vertical load capacity designed to oscillate from front to aft.

EIDAL INTERNATIONAL

Phone: 702-551-1174

E-mail : info@eidalinternational.com

