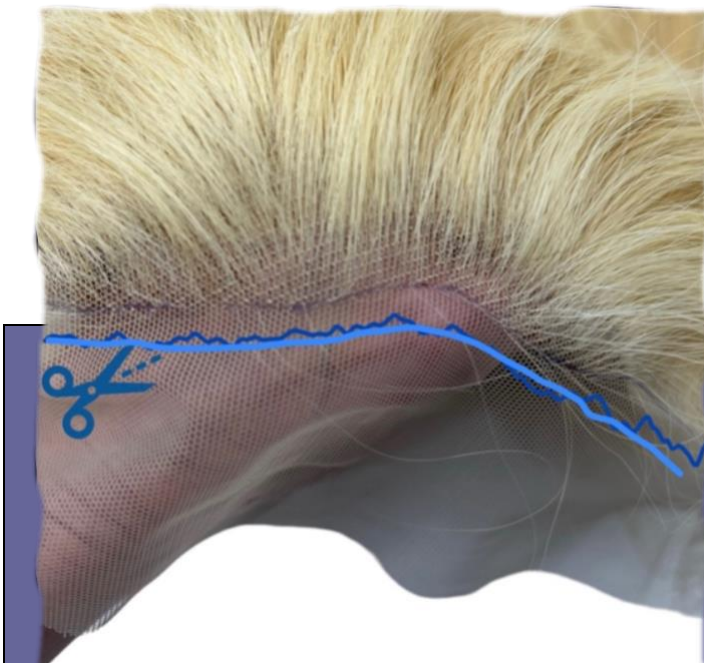


Cutting The Lace



Your new wig will typically arrive with the lace uncut. We recommend using sharp scissors or pinking shears to trim the lace.

For best results, start by leaving a bit of extra lace and gradually trim it back, testing different lengths until you achieve the look that works best for you.



Lace should be trimmed just in front of the hairline, leaving approximately 1/2 inch or more of the lace from the front hairline.



We then recommend carefully trimming the lace to about 1/4 inch in front of the hairline, using a zigzag or curved pattern to help it blend seamlessly with your natural hairline. If you prefer, you can trim the lace all the way to the hairline – just be sure to proceed with caution for the best results.

