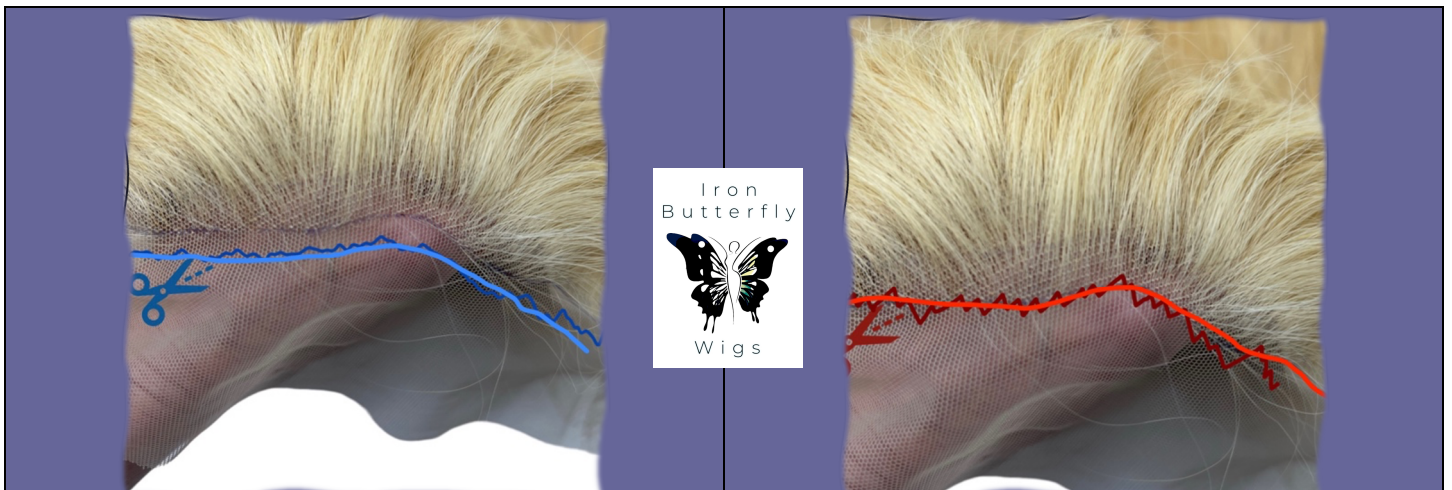


Cutting The Lace



The majority of our wigs are designed as glueless, eliminating the need for adhesive during wear. Your new wig will typically arrive uncut. Lace trimming can be accomplished employing either sharp scissors or pinking shears.

The lace on the Full Lace Wigs will be trimmed around the entire circumference of the head. For optimal results, leave the lace slightly longer and gradually trim it back while experimenting with different lengths until the desired outcome is attained.



STEP ONE

Lace is trimmed just in front of the hairline, leaving approximately 1/8 inch or more of the lace. .

OPTIONAL

We advise slowly trimming the lace back directly to the hairline in a zig-zag or curved pattern, ensuring alignment with your natural hairline for optimal results.

