


December 2022/
January 2023

The

BRAMLEY

FOR BRAMLEY AND LITTLE LONDON

Magazine

- 
- **The return of the Women's breakfasts**
 - **Wilder Bramley**
 - **Basingstoke Gang Show**

**Plus all the usual articles
and much more**

883388

881312

MEKANIX

Bramley's Garage since 1947

MOT

Servicing

Repairs

Car Sales

Diagnostics

Air Conditioning



find us next to the
railway station
behind the bakery



The Bramley Magazine

for Bramley and
Little London

**December 2022 /
January 2023**

Chairman of Steering Group:

Rhydian Vaughan MBE
chairman@bramleymagazine.org.uk

Joint Editors

Rachel Barclay Smith
Georgie Blake
editor@bramleymagazine.org.uk

Schools Editor:

Emily Sykes

Advertising:

Keith Dillaway
bram.mag.adverts@gmail.com

Treasurer:

Nairn Glen
bramleytreasurer@gmail.com

Rector:

Rev'd Mark Anderson
revmarkanderson4@gmail.com
07480 067756
www.stjamesbramley.com

Churchwardens:

Malcolm Knowles
01256 880712
malcolm.knowles@hotmail.co.uk

Rachel Barclay Smith
01256 541251
rbarclaysmith@gmail.com

Bramley Parish Council

Clerk: Maxta Thomas (07810 692486)
parishclerk@bramleypc.co.uk
Chairman: Anthony Durrant
www.bramleypc.co.uk

Artwork and Printing

Greenhouse Graphics
Unit 8, Cufaude Business Park,
Cufaude Lane, Bramley,
RG26 5DL
01256 880770
www.greenhousegraphics.co.uk

*Produced and delivered by the Church
for the benefit of the community.*

Editorial

Well, it's been another momentous year. Looking back on it, we could be forgiven for thinking 2022 is a year we would rather forget; Putin's war in Ukraine has been causing devastation and unspeakable loss for nearly 10 months, the cost of living and inflation continue to rise and in September we mourned the loss of our longest reigning monarch. It's been tough, but there have been lots of highlights too.

I've been looking back at some of the magazines this year and there have been many things to celebrate. In January we welcomed our new Rector, Mark Anderson, and his family to Bramley and in February we rang the bells to celebrate the 70th Anniversary of Queen Elizabeth's accession to the throne. March was a special month for local resident Luigia O'Byrne, who celebrated her 100th birthday, and May saw the village come together for the Bramley Village fete. Both Bramley and Little London held celebrations in June to mark Queen Elizabeth's Platinum Jubilee; how wonderful that she lived to celebrate this milestone and see the whole country come together in her honour. In summer, Wilder Bramley was launched and it is already making a difference to our environment with a bug hotel now welcoming visitors at Clift Meadow and a Bee Garden established next to the car park.

This month, of course, we celebrate Christmas and thank God for the ultimate gift of his only son, Jesus Christ. We recall the words of the apostle, John: *"For God so loved the world that He gave His one and only Son, that whoever believes in Him shall not perish but have eternal life."* There are lots of ways to celebrate Christmas at St James' this year, including the traditional Christingle service and Carol service, as well as a new way for the children to take part in the Nativity. Who knows, perhaps the neighbour featured on page 8 will make a guest appearance. Pages 5, 7 and 13 have details of all the services as well as a Christmas-themed Messy Church on 9 December and the Christmas Tractor Run on 18 December.

The big question is will this be the month we celebrate England winning the football World Cup? We are an optimistic lot at St James' and have scheduled our Carol Service for 6pm the previous day as we expect to be watching England win a penalty shoot-out on Sunday 18 December! If we are wrong about that then you can console yourself with the fact that England have already won the World Cup this year – it just happened to be the cricket T20 final in Australia!

If you are not into football and it's too early to think about Christmas, then there are lots of other things to read about this month, from a new community energy project to a day in the life of a Clift Surgery receptionist.

There is no magazine in January so we will be back with more local news in February. On behalf of Georgie and myself I wish you all a very Merry Christmas and a Happy New Year.

Rachel
Joint Editor

The giving of gifts is not something man invented. God started the giving spree when he gave a gift beyond words, the unspeakable gift of His Son.

Robert Flatt

Cover Photo: Advent Candle

Material for the February 2023 issue to be sent (preferably by email) to the editor no later than 15th January please.

HORIZON SOUND & VISION

Family Run Business Est 1988



- **Aerial & Dish Installations**
Freeview, Freesat, Sky & European.
- **Additional TV Points**
Magic Eye control & HD. Phone and ethernet points.
- **TV Wall Installation**
Free site survey. System planning & advice. Hidden cabling.
- **Tuning and set up of your equipment**
Cable tidying. Weak/low signal improvement
- **WiFi Signal Improvement & Network Cabling**
Advice and Solutions for WiFi dead zones in your home
- **CCTV Installations**
- **Audio & Speaker Systems**
Home, Outdoor & Workplace

Checkatrade.com

01256 841860

Visit us at Essex Road, Basingstoke

www.horizonsoundandvision.co.uk
info@horizonsoundandvision.co.uk



explore engage enjoy excite

Registered Charity No. 1045353

Little Apples of Bramley

Your local charity pre-school

Are you looking for an excellent pre-school for your child, where "Children's emotional well-being is fostered by staff who nurture children's confidence and successfully support children to reach their next steps in their learning" (Ofsted, 2020)?

We are a charity run for the benefit of the children of our community by experienced, qualified and friendly staff. We offer excellent care and education in our inviting hall and large garden for children from 2 years old.

Why not pop up for a visit?

Telephone Jo on 07598 588460

Email : manager@littleapples.org

Visit <http://www.littleapples.org/>

or search for our facebook page

Did you know.....?

•You can choose any of our opening hours as EYE grant funded hours, whether your child is eligible for the universal funding of 15 hours per week age 3-4, 30 hours per week or the 15 hours per week 2 year old offer.



“They're like our other family”

your life
your home
your care
your way

Call our friendly team today to see how we can tailor a live-in care at home package for you.

Bluebird Care North Hampshire

01256 762324

bluebirdcare.co.uk/north-hampshire





Church diary for December...

| | |
|-------------|---|
| 4th | 2nd Sunday of Advent |
| 9.00 | Sunday@nine – Cross House |
| 10.30 | BCP Matins – St James |
| 11th | 3rd Sunday of Advent |
| 8.00 | Holy Communion – St James |
| 9.30 | Making Christingles – Cross House |
| 10.30 | Christingle Service – St James |
| 17th | Saturday before Christmas |
| 18.00 | Carol Service – St James |
| 18th | 4th Sunday of Advent |
| 9.00 | Sunday@nine – Cross House With Holy Communion |
| 10.30 | Morning Worship – St James |
| 16.00 | <i>Light in the Darkness</i> – St James A service for anyone who finds Christmas difficult or painful this year |
| 24th | Christmas Eve |
| 16.00 | Nativity Service – St James |
| 23.30 | Midnight Communion – St James |
| 25th | Christmas Day |
| 10.30 | Family Communion – St James |

... January...

| | |
|-------------|------------------------------------|
| 1st | 1st Sunday of Christmas |
| | NO early services |
| 10.30 | Benefice Holy Communion – St James |
| 8th | 1st Sunday of Epiphany |
| 9.00 | Sunday@nine – Cross House |
| 10.30 | Matins (BCP) – St James |
| 15th | 2nd Sunday of Epiphany |
| 9.00 | Sunday@nine – Cross House |
| 10.30 | Holy Communion – St James |
| 22nd | 3rd Sunday of Epiphany |
| 9.00 | Sunday@nine – Cross House |
| 10.30 | Morning Worship – St James |
| 29th | 4th Sunday of Epiphany |
| 9.00 | Sunday@nine – Cross House |
| 10.30 | Holy Communion – St James |

And into February...

| | |
|-------------|--------------------------------|
| 5th | 3rd Sunday before Lent |
| 9.00 | Sunday@nine – Cross House |
| 10.30 | Matins (BCP) – St James |
| 12th | 2nd Sunday before Lent |
| 9.30 | Sunday@nine – Cross House |
| 10.30 | Holy Communion – St James |
| 16th | Sunday next before Lent |
| 9.30 | Sunday@nine – Cross House |
| 10.30 | Morning Worship – St James |

From the Registers

Funerals

Barbara JOHNSON at
St James' Church
on 24 October 2022

Jill Anne SMART at
Basingstoke Crematorium
on 9 November 2022

Other local churches

St Bede's, Catholic Church

Popley Way, Basingstoke, Hampshire RG24 9DX
<https://www.stbedesbasingstoke.org.uk>

St Michael's, Catholic Church

Bishopswood Road, Tadley RG26 4HG.
<https://stmandsto.org.uk>

Breach Lane Baptist Chapel

Sherfield on Loddon
For information on services please contact
Geoffrey Belsham on 01256 882534



BUTTER DAISY NURSERY

Quality day nursery for children
aged 3 months to 5 years

Private, spacious nursery in a characterful
setting, beautifully designed to support the
individuality of every child.

Open 7.30am to 6.30pm, 51 weeks a year
for full days and part-time sessions.

Participates in the Early Years Education
scheme, funding places for all 3- and
4-year-olds and eligible 2-year-olds.

01256 882515

Easy access to
Basingstoke
and Reading.
Ample parking.



For a Warm Friendly Welcome

THE SHOP IN SHERFIELD-ON-LODDON

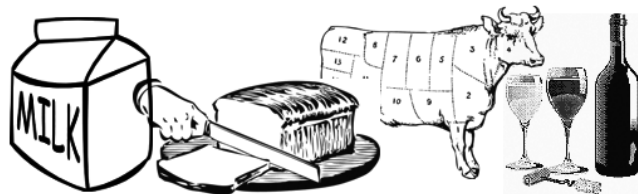
Selling a vast range of groceries including:

Local bakery bread & cakes

Market fresh fruit & veg

Quality fresh meat & poultry

Excellent selection of wines



THE SHOP, Reading Road, Sherfield

Telephone: **01256 882234**

Monday-Saturday 7.00am to 7.00pm

Sundays 9.00am to 5.00pm

Orders taken for delivery



Caring dentistry for all the family
We treat people, not just teeth



hook
dental

To experience the difference,
please call us on 01256 762353.

- family dental care ■ NHS dentistry for children
- hygiene therapy ■ Saturday appointments ■ dental implants
- cosmetic dentistry ■ fast & clear braces for adults

Stanley House, London Rd,
Hook, RG27 9GA

hookdental.com

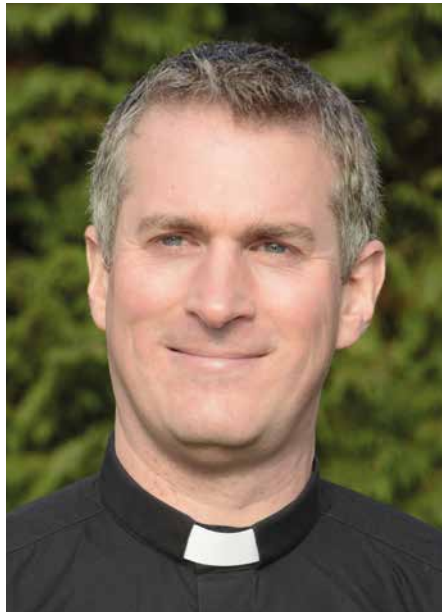
01256 762353

In this month's article
**Reverend Mark
Anderson** reflects
on **Celebrations and
resolutions.**

'Celebrate good times, come on! It's time to come together' are two aspects of Christmas and New Year which are (hopefully) familiar to most of us and part of what we are looking forward to during the festive season.

Those words are from a song which is still popular over 40 years since we first heard Kool and the Gang sing it in 1980. In that year, I was younger than my youngest child who is now 8 - happy times! Back then, I was looking forward to all the presents I was hoping to receive and the school holidays, as well as playing in the snow and eating lots of chocolate.

Now we are older, what do we look forward to? What do we celebrate? I'm sure the sentiment of that song is still true: coming together to remember and celebrate what is good in life. And what is good? For me, it's family and



Rev'd Mark Anderson

spending time with people and the love we have for one another.

The more Christmases and New Years I experience, the more I realise what is important in life. It's not the latest gadget (or whatever gift you so desire), nor what I accomplish at work or the

possessions I accumulate. What is important is my relationship with my family, friends and others.

As Christmas passes and the New Year approaches, some of us may make a resolution or two. Rather than the usual ones which perhaps last a few days or maybe weeks, what is it that will help us to strengthen our relationship with others? What is it that will help us to love others in better ways? We will need to sacrifice something of ourselves and our needs, but it will be worth it.

Isn't that what Jesus showed us how to do? At Christmas we celebrate his birth in Bethlehem. His whole life was lived in a way which showed us how to live well with others. How to love and how to discover a way to live which is full of love, joy, peace, forbearance, kindness, goodness, faithfulness, gentleness and self-control. That's something to celebrate!

May you have a love-filled, joyous Christmas and a New Year celebrating all which is good in life.

Merry Church
JOIN US FOR CHRISTMAS FUN!
FRIDAY 9TH DEC 4.30-5.45
at SHERFIELD PARK
COMMUNITY CENTRE

MILLIE ELAINE KAREN

BOOK BY THURSDAY 8TH AT revkarenw24@gmail.com
*small charge to cover food etc (speak to us if this is difficult)

Next Merry Church is 13th January 2023—put the date in your diary now!

*Christmas at
St James Church, Bramley*

CHRISTINGLE SERVICE
SUNDAY 11TH DECEMBER AT 10.30

CAROLS BY CANDLELIGHT
SATURDAY 17TH DECEMBER AT 6PM

LIGHT IN THE DARKNESS
A QUIET REFLECTIVE SERVICE
SUNDAY 18TH DECEMBER AT 4PM

CHILDREN'S NATIVITY SERVICE
SATURDAY 24TH DECEMBER AT 4PM
COME DRESSED UP AS A NATIVITY CHARACTER OR
GET A NATIVITY COSTUME ON THE DOOR

MIDNIGHT COMMUNION
SATURDAY 24TH DECEMBER AT 11.30PM

CHRISTMAS DAY
FAMILY SERVICE
SUNDAY 25TH DECEMBER AT
10.30AM

In this Christmas edition of **Meet The Neighbours** we re-print an article recently discovered in the **The Bramley Magazine archives**, dated **December AD 45** and originally printed in Latin.

Little Donkey, what brought you all the way from Israel to the Cufaude Lane Retirement Home for Donkeys?

I was born in an olive grove on the hills above a city called Nazareth in the region of Galilee. I started my first job working for a carpenter called Joseph, carrying his tools and the furniture he made. I had no idea that would set me on a life of travel!

How exactly?

Galilee is part of the Roman Empire and in 33 BC Emperor Cesar Augustus announced a census decreeing that everyone was to register in their family city. Joseph, a descendant of King David, had to travel to Bethlehem in Judæa. Joseph’s fiancée Mary was expecting a baby so she rode on my back and Joseph led the way. It’s about 95 miles and several days walk from Nazareth to Bethlehem on dusty roads, not like those straight roads the Romans build.

We arrived in Bethlehem, packed with people from all over, and our Airbnb was double booked. We had to stay in a stable. I’m not sure why Joseph was so upset, there was plenty of straw to sleep on, just like home.

I don’t see how that led you to a life of travel?

Well, the night we arrived, Mary gave birth to a son, Jesus. She laid him in the manger on hay that was meant to be my supper! That night shepherds arrived to see the baby. Angels had come to them while they were on the hills with their sheep, telling them that the Saviour, Christ the Lord, the Son of God, had been born.

Later wise men from the East turned up. They had followed a star that appeared in the sky on the night Jesus was born. They had come to worship him as King of the Jews – they brought amazing gifts: gold, frankincense and myrrh. Their visit caused a lot of trouble though. King Herod, who ruled the Jews on behalf



Little Donkey enjoying life in Bramley



The olive grove in Galilee, where Little Donkey grew up

of the Romans, was angry so we left for Egypt to escape his soldiers.

Egypt is a really interesting place, the pyramids and the Sphinx with that amazing nose. Once we heard Herod had died, we went back to Nazareth. Every year we went to Jerusalem to visit the temple. I had to learn Hebrew so I could listen to Jesus reading from the holy scriptures – most people spoke Aramaic day to day, derived from the donkey language Bray-amaic.

One day, the Jewish authorities became really angry with Jesus and all that King of the Jews talk. They didn’t believe he was the Son of God despite the amazing things he did – healing people and showing how the prophets in the holy scriptures foretold his coming to save his people.

What happened?

They convinced the people of Jerusalem to ask the Romans to crucify him. Later, I met the Roman Centurion who presided over the crucifixion; he had become convinced Jesus was the Son of God.

He asked me to join the Roman army to help with his baggage. That was exciting – we took a boat to Italy stopping at Malta on the way. Nice island, too many snakes. Rome is very impressive. Eventually we set off to Gaul with Emperor Claudius, in AD 43 I think. He planned to invade Britannia, which was my last adventure. We had run-ins with a local

warrior called Caractacus and finally saw him off near Calleva Atrebatum. The llamas there told me about this retirement home. So here I am enjoying life – no dusty roads here, too much mud in this country.

Our final question - tell me something about Bramley that people should appreciate more?

I had a dream, an angel told me Jesus had risen from the dead and that many people realised he was the Son of God. In a thousand or so years Christians would build a church in which to worship him, just up the road in the field behind The Old Bells tavern. LOLZ, can you believe that?

Little Donkey

Little donkey, little donkey
On a dusty road
Got to keep on plodding onwards
With the precious load.

Been a long time little donkey
Thro’ the winter’s night.
Don’t give up now little donkey
Bethlehem’s in sight.

Ring out those bells tonight
Bethlehem, Bethlehem.
Follow the star tonight
Bethlehem, Bethlehem.

Little donkey, little donkey
Had a heavy day
Little donkey carry Mary
Safely on her way.

Little donkey, little donkey
Journey’s end is near
There are wise men waiting for a
Sign to bring them here.

Do not falter, little donkey
There’s a star ahead
It will guide you, little donkey
To a cattle shed

Ring out those bells tonight
Bethlehem, Bethlehem.
Follow that star tonight
Bethlehem, Bethlehem.

The Women's breakfasts are back!

I loved the creative touches and the genuine welcoming atmosphere

It was such a lovely morning

Wow – what a spread, what an occasion, what a triumph!

These are just some of the comments that followed the women's breakfast in Cross House on Saturday 5 November. There was a lovely atmosphere when over 50 women got together for breakfast. Old friends caught up with each other and new friendships were made as everyone sat down at the beautifully decorated tables and tucked into pastries, cereals, pancakes, fruit, sausages and lots of coffee. When everyone had enjoyed seconds and even thirds, Millie Anderson gave an inspirational talk about her Christian journey, which was both powerful and relatable.

The event was such a success that we are already planning the next one, which will take place on Saturday 4 February in Cross House.



The gift of movement!

Our standard gift vouchers are available for packages of 3 private Pilates appointments but can also be tailored to be a completely bespoke gift.

For purchases contact us at:
www.nbkpilates.co.uk 07967010749 naomi@nbkpilates.co.uk

Studio Address: Basingstoke road, Riseley RG7 1QD

Basingstoke Gang Show

Basingstoke Gang Show returns to The Haymarket for its 28th stunning variety show spectacular, with a production of classic to contemporary performances showcasing the very best of local talent in the Scout & Guide associations; you can expect to be delighted by magnificent music and LOL comedy.

Basingstoke Gang Show is recognised as the best-selling and longest running 'family variety show' in our region and showcases an extremely talented cast, including Imogen Cox, pictured below, who lives in Bramley.

Awarded **best compilation show** by NODA National Operatic and Dramatic Association for our 2020 show, this is an amateur production not to be missed. The 11 performances, many over February half term week, will entertain audiences as you laugh out loud, tap your toes and sing along to the songs that you love.

Interested? Book your tickets early for your family and friends to experience this feel-good family show at The Haymarket.

Dates are Thursday 9th to Saturday 18th February 2023, excluding Sunday 12th. Matinee performances are also on Saturday 11th and 18th February.

Ticket prices: Adults £22.00, Children £15.00. Last night (Saturday 18th) all seats £24.

Early Booking Discount (book by 21st December 2022) to save £2.00 off each ticket by quoting code 'BGS23' for



performances on Monday 13th and Tuesday 14th February only.

Group Booking Discount buy 10 or more tickets and get £1 off each ticket if booked by 15th January 2023. One discount only, per booking.

Book tickets here: <https://www.anvilarts.org.uk/whats-on/event/basingstoke-gang-show>



Imogen Cox

thehealingtouchway clinic
the essential 'me' time



*'Pssst... Bramley's
best kept secret for
cosmetology beauty
treatments & range
of massage therapies.'*

www.thehealingtouchway.co.uk

Free consultation Tel:07577107798

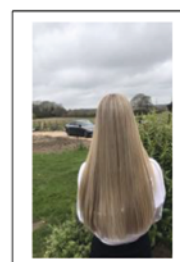
by appointment only
27 Longbridge Road, Bramley RG26 5AN



Facebook: MKHairdressing

T: 07502 261199

- Colouring
- Keratin Styling
- Balayage
- Cutting
- Home Visits



A local friendly hairdresser, you can find me in my Studio next to St James Church with free parking or an easy walk.

Molly Kirby – MK Hairdressing

Masters House, The Old School, Silchester Road,

Bramley, RG26 5DF



**Basingstoke
and Deane**

Leaf fall clearance

During the year, leaves are swept as part of the Borough Council's regular street cleaning programme, but between November and January, we need to spend a bit more time collecting the autumn and winter leaf fall.

The leaf fall collection programme begins in early November and will continue until January 2023. Last year the teams collected over 600 tonnes of leaves through mechanical and manual sweeping much of which was turned into compost locally.

The mechanical sweepers are scheduled to be clearing leaves in Bramley in early December, although this may change due to weather conditions or other priorities, including emergencies

Please do not clear leaves from your property onto the roads and pavements around your home. This can not only cause health and safety issues for road users but can also delay the crews getting to other parts of the borough.



Bramley Lunch Club

In October, due to illness and other commitments, there were only three members who met at The Dome Cafe for an enjoyable lunch and chat.

November was our usual visit to The Avenue Garden Centre at Lasham. We arrived to see a colourful display of flowers and an abundance of Christmas cards, decorations and gifts.

Six members met at the restaurant for a tasty lunch and our usual catch up with latest news. It was then time to spend our money, buying cards and many tasty treats for Christmas.

Christmas lunch has been booked once again at The Elm Tree in Beech Hill.

Freda Clark

Bramley Parish Council Update

I cannot believe that it is nearly Christmas again....so much has happened in the last 12 months and the year has flown by.

Bramley Parish Council spent the early months of this year preparing for the Queen's Platinum Jubilee. We were proud to celebrate this momentous event with the lighting of the beacon and the joining together of people of all ages within the village at Clift Meadow on 2nd June. Sadly, as we all know, just three months later we were celebrating Her Majesty's life in a very different way with her passing on 9th September.

Over the past year the PC has discussed many planning applications both large and small. Major planning issues for Bramley at present are:

- Stocks Farm (development of 140 houses and associated amenities 21/03578/OUT) -the public inquiry appeal for this application will be begin on 10th January 2023 and will last for several days.
- Solar Farm development in Minchens Lane (20/03403/FUL) - the appeal for this application will begin on 13th December for up to 5 days.
- Tudor Farm development (20/00319/FUL) – you will have seen that building has recently begun. There are issues with lorries parking on the road outside the development, on the blind bend. This has been raised with Development Control at Basingstoke & Deane Borough Council, but in the meantime, Bramley Parish Council urge all residents to take care driving at that corner.
- Land adjoining the Clift Surgery (technical details consent for 4-6 houses 21/02588/TDC) - the appeal for this proposed development has been dismissed – more details are on the Bramley Parish Council website <https://www.bramley-pc.gov.uk/appeal-decision-land-adjoining-clift-surgery-21-02588-tdc/>

We will keep you updated on these appeals as and when we have any further information.

Bramley Parish Council has given out several grants in the past year to various organisations including Clift Meadow, Bramley School Association, Victim Support, Bramley Surgery PPG, Bramley Youth Club, Tadley Citizens Advice, and The Royal British Legion to name but a few. We look forward again to assisting local organisations in the coming year. A recent grant was made to Bramley School/Clift Meadow for an evening of fun and fireworks which was held on 4th November. Judging by the many comments that have been made, it was a very successful evening and we look forward to next year's display. A big thank you to all those involved.

The Parish Council's contractor will be carrying out some path clearance work in the next couple of weeks. This will include the low hanging vegetation along the footpath along Bramley Green Road down to Pond Road, and leaf litter clearance at the pull in on Bramley Green Road, near Bramley Green itself. The Parish Council will be keeping an eye on the pavements around the Parish, and will liaise with the correct authorities to try and keep them reasonably clear.

The next meeting of the Planning Committee is on 13th December and the next full council meeting is on 20th December. Both meetings will be held at 7.00pm in the Bramley Room at Bramley Village Hall, and as always members of the public are invited to attend. Our website www.bramley-pc.gov.uk and our facebook page <https://www.facebook.com/BramleyPC> enables you to see what Bramley Parish Council is doing on your behalf.

Finally I would like to wish everybody a very Merry Christmas and a Happy New Year on behalf of Bramley Parish Council.

Cllr Liz Capel

Contact the Clerk at clerk@bramley-pc.gov.uk or on 07810 693486

Thank you

Thank you everyone who has sent good wishes for my recovery following my recent medical emergency. I am overwhelmed by all the positive vibes and prayers being sent my way.

Being home again is a bit scary, but so much nicer than being in hospital!! The skill of the surgeon is just amazing, and with my new heart valve and aorta, every day should be better than the one before.

Once again, thank you all, **Catrina Stockwell**

Clift Surgery – A Day in the life of...

Last month we wrote a piece about a typical day for a GP. This month we are sharing ‘a day in the life of a GP receptionist’ which, as you will see, is all about multitasking, not just answering phones and booking appointments.

We arrive at the surgery between 7:30-7:45am to open up the surgery and turn on the phones, ready for a busy day. The surgery receives and manages around 500 phone calls a day and it is all-hands-on-deck in the morning when it is busiest with queries and appointment requests.

We receive, file and action, on average, 170 letters / documents from patients and consultants or hospitals, either via email, post or the electronic ‘document manager’ system. We process approximately 20 eConsults per day and this usually means sending and receiving ‘tasks’ to clinical staff, answering questions, organising referrals and arranging appointments.

We manage at least 15 new registrations of patients per week and arrange the administration for patients leaving the practice and transferring their records to the new surgeries. The reception team also arranges transport for people needing help to attend hospital appointments and makes the calls for emergency ambulances when needed.

There is a lot of paperwork that needs processing for insurance and other medical reports and ‘sick notes’, which receptionists manage together with the secretarial team. A particular aspect of this is the process of administration after a patient’s death, including the death certificate and cremation forms, which need to be done within a few days.

The new booking-in screen has really helped to reduce people’s wait for a receptionist to book them in whilst they are taking phone calls, but there are often questions or appointments that the team at the front desk need to deal with face to face, so there is a lot of multi-tasking needed. We understand the current challenges for patients wanting to get help from their surgery and we always try to give them the time that they need, whether on the phone or in person, irrespective of who else is waiting.

We are not being nosy or trying to take the place of the doctors when we ask questions, but it helps us get the right care with the most appropriate person at the surgery. We are very lucky to have a wider team now so that it isn’t only a GP appointment we can offer, but that does mean we need more information to get it right for you.

There is a shortage of GPs locally and nationally, so it makes it more difficult to book you into GP appointments, but we have excellent healthcare assistants, nurses, nurse practitioners, physios, clinical pharmacists, mental health practitioners, social prescribers, and wellbeing coaches who help to provide you with the care that you need.

We work as a team with all the above and try our hardest to get you the right care as quickly as possible, but that is not always easy so please treat us with respect and kindness as we are caring people who have feelings too.

Thank you

In February, our Management Team will share their Typical Day with you.

Clift Surgery Patient Participation Group latest updates

Christmas has come early to Clift Surgery

Clift Surgery and the Patient Participation group are delighted that they have been able to purchase three items to assist patients when they visit the surgery.

Firstly, two benches are about to be installed outside the surgery. One will replace the old bench at the side of the main entrance and a new bench is being installed by the dispensary, so patients can sit and wait for lifts and appointments.

The second purchase is for an examination couch specifically designed for female examinations. The surgery is lucky to have a doctor who is a specialist in women’s health and this couch will make the process much more comfortable for both doctor and patient. Such specialist couches are not provided by the NHS.

We would like to thank The Loddon Lions and Councillor Rhydian Vaughan for donating the money for the couch, Bramley Parish Council for giving the money for the benches and Keith Oborn and the PPG members for their hard work in achieving this result.

Photos will follow in a future edition of the Bramley Magazine.

Other news

Appointments. As winter approaches, alongside winters illnesses, the requests for appointments are increasing. Please be aware that patients requiring routine appointments may have to wait longer than they wish. However, for urgent medical cases patients should call the surgery where they will be triaged by fully trained staff.

Alternatively, please use EConsult or, if out of hours, please call 111 or 999 if life threatening.

Non attendance at booked healthcare appointments. Sadly, here is a summary of the numbers of patients who did not attend:

- October 152 appointments missed
- September 112 appointments missed

If you have to miss an appointment or no longer require one, please make sure you contact the surgery and let them know, so the slots can be reallocated. Please consider others if you cannot attend.

Winter vaccinations. If you have not yet done so, please ensure you get your Autumn Covid booster and flu jab. Call 119 or book online through the NHS website.

Repeat Prescriptions over the Christmas and New Year period. Please make sure you order your repeat prescriptions in good time to make sure you get the medication you need. Avoid leaving it to the last minute.

As last year, a list of **Christmas pharmacy openings** will be published on the Bramley Village Hub and on the notice boards in the village.

The Bramley Village Hub www.bramleyvillagehub.com hosts the Patient Participation Group Facebook page and updates from the surgery so please check in for the latest information.

We wish you all a healthy Christmas and New Year and we will be back in the February edition with more news from the surgery.

To contact the Patient Participation Group, please email ppgclift@gmail.com

MEADOW TALK

It is easy to forget that until Bramley was provided with main drains in 1972, it was a village of around 500 houses and several farms. Naturally the farmers supported each other when they were developing projects or dealing with problems, and thus it was that Jennie and Richard Foot, and John and William Clift worked together. After Richard's death, Jennie continued to work with the Clift brothers, becoming a Trustee and helping with the establishment of the Clift Meadow Trust, and then assisting in navigating it through many challenges.

The existing ball court is mainly in place due to her painstaking efforts. Therefore, after her death, the Trustees decided to honour her memory by planting a tree in the Meadow and they invited her son, Rob Foot, to assist with the planting.

One of the effects of our changing climate is the increased playing of tennis outside the traditional summer months. As such, contrary to recent years, the tennis nets will remain in place. Additionally, the length of the grass is, at times, becoming problematic for the junior footballers, but be assured that the meadow will continue to be cut as and when it is possible.

As ever, efforts by all those who keep Clift Meadow free of litter and dog mess are massively appreciated. Whatever the month, season or time of day, it continues to be enjoyed by so many, over thirty years on from the initial thoughts and plans of the Clift brothers with Richard and Jennie Foot.

Clift Meadow Trust



Rob Foot helps plant a tree in memory of his mother, Jennie.

WE OFFER

- PRIVATE, CHARITY AND CORPORATE EVENTS
- FESTIVALS, FETES AND FAIRS
- REGULAR FARM/CARAVAN SITE VISITS
- MOBILE KITCHEN

15% OFF LOCAL EVENTS
Private, charity or corporate event catering. Ts & Cs apply.

CONTACT JEM
07818558679 localjems@outlook.com
www.localjems.co.uk @localjems
Located in Bramley, Hampshire.

18 DEC **Bob's Christmas Tractor Run**

Please come and give our Festive Fleet a wave as we travel through Little London, Silchester, Tadley, Bramley and Sherfield on Loddon on Sunday 18th December.

Visit our Facebook page for more information. Search events Bob's Christmas Tractor Run 2022

If you would like to join the Festive Fleet with your fairy lit tractor, or have any questions regarding the event please email bobstractorrun@hotmail.com. Tractor booking deadline 11th December. No entries on the day

Donations will be split between

Pilates classes that work for you

5 class a week

Monday: 8.45am Bramley Clift Pavillion
 Tuesday: 7pm via Zoom
 Wednesday: 7pm Bramley Clift Pavillion
 Thursday: 9.30am SSJ Village Hall
 Friday: 8.30am via Zoom

Prices

£5 per Zoom class
 £10 per in-person class
 £10 a week Zoom pass*
*This gives you unlimited access to Zoom classes for a week

All classes are available to join via Zoom if preferred. Classes are recorded and available for 7 days

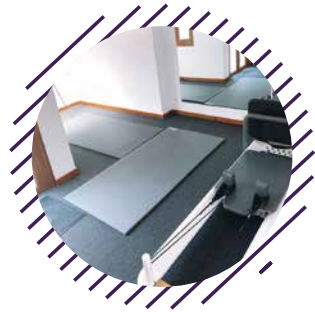
1-2-1 reformer and Mat. sessions available in Tadley studio

📞 07789 487499

✉ KJamesPilates@gmail.com

📘 Kelly James Pilates

📷 KJamesPilates



Showroom
 The old Station Andover Rd Oakley Basingstoke RG23 7HA
 Tel: (01256) 782070
 OPEN 9am - 5pm MONDAY - FRIDAY
 CLOSED WEDNESDAY SATURDAY 10am - 3pm



😊 SERVING BASINGSTOKE FOR 40 YEARS 😊

CARPETS, VINYL, WOOD, LAMINATE, BEDS, DINING SETS, LOUNGE FURNITURE, BEDROOM FURNITURE, STUDY FURNITURE.



If you want FURNITURE and you want it FAST call in and see it, feel it and take it away today or use our FREE local delivery service



**CARPET EDGING SERVICE CARRIED OUT IN OUR STORE
 ORDER RUGS ANY SIZE TO SUIT YOUR ROOM
www.oakley-furnishing.co.uk**



Elm Park Garden Centre

www.elmparkgardencentre.co.uk

Tel 01256 850587

📘 Like and Share us on Facebook



Christmas Shop 🌸 Decorations 🌿 Gifts
 Festive Tablewear 🌸 Wreaths 🌿 Lights
 Artificial Christmas Trees
 From late November freshly cut Christmas Trees

Aldermaston Road, Pamber End, Tadley RG26 5WQ



Tranquil Beauty Clinic

Advanced Facial Treatments

Reduce fine lines and wrinkles, sun damage & pigmentation; hydrate, plump & contour; soothe Rosacea. No downtime or injectables



My client before & after an Advanced treatment



MicroChannelling significantly reduces lines & wrinkles, rejuvenates skin texture & increases firmness after just one treatment

MicroDermabrasion gently buffs & polishes to remove dead skin cells & encourage collagen

Oxygen Therapy cryo-cooled oxygen with serum to lift, plump & hydrate

TriFusion Light Shied balance, rejuvenate & energise skin cells, eradicate bacteria, lift pigmentation & soothe Rosacea

www.tranquilbeauty.co.uk

07557 997653 Over 15 years experience

Wilder Bramley is “making a buzz” at the Clift Meadow!

At the end of the summer, the Wilder Bramley team of volunteers set out to turn the area around Clift Meadow tennis courts into a wildflower mini-meadow. First task was ground preparation. Huge thanks to Aidan and his two guys, James and Dan, from Bramley Maintenance & Environmental Services, who worked hard to remove as much grass as possible, exposing areas of bare soil. This was necessary to make sure the seeds successfully germinate, and the wildflowers aren't outcompeted by the grasses. We then sowed our wildflowers, and, to our delight, hundreds of seedlings came through quickly due to the warm weather we have had this autumn – a promising sign!

We are hopeful that, once established, our wildflower area will not only attract a whirlwind of summer visitors, such as wild bees and butterflies, but that the colourful flowers will be enjoyed by the Bramley community and all visitors to Clift Meadow. Imagine a summer's walk to the soundtrack of buzzing bees and the chirp of crickets!

A century ago, meadows were a common sight in our landscape. Sadly, this important habitat was hit hard by the changes to the countryside – since the 1930s we have lost around 97% of UK wildflower meadows! They are essential for our declining pollinators and so we were keen to create a wildflower area in the village and we would like to encourage you to do the same in your gardens – there isn't a space too small for a wildflower patch.

Most of us with a garden will have a lawn. The easiest way is simply to put away the mower and let nature take over. You'll be surprised by the diversity of plants in your lawn just waiting for a chance to flower – buttercups, daisies, clover, selfheal or bird's-foot trefoil. Even a small patch left to grow will make a difference.



Sowing seeds and planting wildflower plugs.



The ground had to be rotavated to clear the grass away.



Raking the ground before seeding.

Bramley WI

This month we had an entertaining evening with Basingstoke Morris Dancers!! They gave a presentation of the history of Morris Dancing and it was surprising how long it went back in history and how many different named dances there are. They also did a performance in all their finery. The last part was very amusing as they asked some members to dance with them. They did amazingly well.

The boxes for the Rotary were filled with gifts and they are now all despatched to children in Ukraine and other countries. We are also hoping to send our usual Christmas goodies to the school for families who need a bit of extra help at Christmas.

We have an addition to our garden in Clift Meadow - we now have a shed to put all our tools in. Unfortunately, it

had only been erected for a few days before it had graffiti on it - what a shame!!! But our grateful thanks to the gardening boys who put it up and also to Clift Meadow for buying it; it is very much appreciated. The girls who do the gardening have done a wonderful job ever since the garden was created in 2000. They are down there every Wednesday and are now going to have a rest until the Spring. Thank you, girls.

We are going to the Dome for Christmas lunch at the beginning of December and our next meeting is our Christmas Party on 8 December, when we will play games and have drinks and nibbles.

Lastly, we would like to welcome all our new members. It is great to see you and we hope you will enjoy our evenings and activities.

Jane Matthews



Royal British Legion, Bramley & District Branch



At our AGM in October, John Delafield stood down as Chairman after a sterling effort keeping the branch functioning through the Covid pandemic and getting meetings going again earlier this year. John Morley was elected as Branch Chairman in his place. Jill Mann was elected as Secretary in place of Michael Luck, who retains his role as our Poppy Appeal organiser. Other officers and members of the committee remain the same, with the addition of Linda Dove to the committee.

At its first meeting, the new committee decided that future meetings (until April) will be held in daylight hours. Our next meeting therefore will be on **Tuesday 13 December** in Cross House, Bramley from **1.30pm till 4pm**. This will provide a 'warm hub' where we will sing some carols and songs and enjoy tea or coffee and mince pies. You, your family and friends are warmly invited to join us, even if you are not a member. If you have a Christmas jumper, feel free to wear it! Admission is £6 at the door (CASH ONLY PLEASE) and there is a grand raffle with the first prize being a hamper of Christmas food and goodies!

Our first meeting in 2023 is on **Tuesday 10 January** at 1pm for 1.30pm at Cross House. Again, we can offer a warm room, homemade soup and a crispy roll followed by an illustrated talk on The Real Dambusters' Story by Rhydian Vaughan, our branch Vice-Chairman. There is a small charge of £3 for members, £5 for non-members, again, cash only please, as we don't have a branch card reader.

Hants/Berks Borders: Alexander Technique with John Hunter

Sometimes known as "the actor's secret", the Alexander Technique is a no-strain, intelligent approach to dealing with stress, tension and backpain.

**"...the most effective of
all the treatments
reviewed."**

Backcare Association

Private lessons in Bramley, Hants.
www.the-alexander-technique.com

E: john.s.hunter@gmail.com

M: 07780 113627

Coffee and biscuits will also be served so come along, enjoy some warmth and good company and a most interesting talk.

Membership of The Royal British Legion is open to everyone and costs just £20 for the year. As well as supporting our Armed Forces Community, you will receive your membership badge, the colourful bi-monthly magazine and special offers. The easiest and quickest way to do this is online or you can contact me and I will get an application form to you. Our branch number is BL1848.

Thanks to everyone who supported the Poppy Appeal either with donations or giving an hour or two to look after the stall at the hospital or at the Sherfield Coffee Shop. Massive thanks to our Poppy Appeal Organisers, Michael Luck in Bramley and Natalie Lerner in Sherfield. We will give you the total of money raised next time.

On behalf of our Branch, I wish you a happy and peaceful Christmas and all good fortune and health for the New Year.

John Morley
Branch Chairman

<http://branches.britishlegion.org.uk/branches/bramley-district>

Poppy Collection at the Basingstoke Hospital

For many years now, the Bramley & District Branch of the Royal British Legion has been able to do the Poppy Collection in the foyer of Basingstoke hospital in the two weeks prior to Remembrance Sunday.

Under the expert organisation of Michael and Pam Luck, our Poppy Appeal Organisers, 28 villagers manned the stall in various shifts. What an enjoyable experience it was! Those who came by were invariably chatty and hugely generous with their donations and the general ambience created was excellent.

Our thanks to the Hospital for allowing us to continue and to all those who took part in the process. Final collection figures are still being counted. We are over £9,000 now with a few more collection boxes to go.



This year's **Remembrance Day Service** took place in St James' Church on Sunday 13 November 2022. **Steve Day** looks back at the service and recognises those who took part.

The service was led by the Reverend Mark Anderson. The Branch Vice Chairman, Rhydian Vaughan, read the Exhortation during the Act of Remembrance and I, as Branch Treasurer, read the Kohima Epitaph just before the end of the service. I will try below to recognise those who helped make the service a reality and ensured we both remembered and gave thanks for the service men and women who gave their lives in the service of their country.

Firstly, a big thank you to Andy and Beth Pinnock for managing the broadcast of the live service from the church, into Cross House and on Zoom. Thank you to the Bramley Bell Ringers for ringing the bells half muffled before the service and to Generations for their rendition of *Pie Jesu* before the service and *Be still my soul* during the service. Thanks to Mark Turner for playing the organ and Reverend Mark Anderson for leading the service. Finally, a big thank you to those who laid wreaths in the church, to Eileen Gulston for reading *In Flanders Fields*, to Pam and Michael Luck for putting up the Poppy Curtain, and to Selina Day, Sophia Barclay Smith, Zac Henderson from Bramley Scouts and Sophie Oakley from Bramley Guides for reading the Bramley Roll of Honour. There were many more people deserving of thanks for the day, including the Bramley Scouts, Guides, Cubs, and Beavers plus all those who attended and those who dialled into the service on Zoom. Here are some photographs of the event.



Stamps

You will probably have seen or heard the recent adverts from



Royal Mail about new stamps. At the end of January 2023 all of the existing stamps (with the exception of Christmas stamps) will cease to be usable for postage. New stamps with a QR code must be used when you wish to post a letter, as in the picture. They will, according to Royal Mail, 'enable exciting new services by connecting physical stamps to the digital world through the Royal Mail app'. There is no more information about this, but I have my own theories.

Once upon a time letters were postmarked. The round stamp would give the place, date and time of where the letter had been posted. This sometimes formed a clue in a detective novel. The place in particular would be your local 'Post Town', Basingstoke or Tadley for example. Gradually the network of local sorting offices has been cut, and so now a letter posted locally might end up with a Swindon or

Southampton postmark. Very often the stamp is not cancelled by the postmark. People seize these uncanceled stamps because they can be re-used. Obviously Royal Mail know that this happens.

Royal Mail mention that 'operational efficiencies' will be possible with the new QR coded stamps. A huge amount of data can be stored in a QR code: over 7,000 digits or 4,000 alphabetic characters. All of the new stamps seem to have a unique code. I have looked at a few – sad I know, but that is how I get my thrills these days. It is therefore possible to track a particular stamp as it passes through the Royal Mail sorting systems. This means that once it is used, it can't be re-used. It is just another service made possible by the vast computing power now available to organisations. Of course, it might be possible to see the progress of your letter if you have the Royal Mail app, downloadable now according to the adverts.

Thinking about other uses, it would become possible for police or security services to know where and when the particular stamp was purchased. If purchased using card payment, the

person might be identifiable. I see this cropping up as a plot point in a future TV series. This may not happen yet, but it will. So be careful if someone asks you if you have a spare stamp: you never know...

Of course, there are always people who find ways around systems. Back in the 1960s one of my friends was at Cambridge University. He wanted to write to his girlfriend but objected to the 'new' first- and second-class stamp system, introduced in 1968. After some experimentation he found that putting a second-class stamp in the bottom left of the envelope rather than the top right would fool the automatic sorting equipment, which would drop the letter into a special container for manual sorting. The staff would then always pop it into the first-class post once it had been checked. How much did he save? In 1968 a first-class stamp was 5d and a second-class was 4d, and these were old pennies. This year a first-class stamp is 95p and a second-class is 68p. I leave you to ponder that – Merry Christmas and a Happy and maybe Prosperous New Year!

Michael Luck

Buddying up at The Priory

At The Priory School in Pamber End, we have been developing our buddy system over the past few years. The Priory is a very friendly school anyway but the buddy system ensures that all of our younger children have an older friend around the school. The buddies do a great job and take their role very seriously! The buddies play with their buddies during some play times, share learning achievements and even sometimes go on school trips together.

If you'd like to come to see how the buddy system works at The Priory, please give us a call on 01256 850062.

Matt Walsh
Headmaster





Basingstoke Lions
Proudly Present



A Great Evening of Trad. Jazz

with the

Sussex Jazz Kings

at

The Royal British Legion

Royal British Legion Hall, Crown Lane, Old Basing,
Basingstoke RG24 7DN

on

Saturday 3rd December 2022

Tickets £12.50

www.basingstokelions.org.uk
tony.bamberger@hotmail.co.uk

01256 850254
Door Open 7.30pm
Music 8pm to 10.30pm

REGISTERED CHARITY NO. 274337

Bramley Speedwatch

General:

Two new locations were suggested for the SIDs; the triangle by Minchens Lane, and Minchens Lane, south of the Clift Meadow entrance. See SID Data Table below for recorded data (*).

Recent Local SpeedWatch Activity:

Two Manned Deployments were carried out during October, both by the Village Hall. The details of 16 vehicles

were passed onto the police. Maximum speed recorded during deployments was 39mph.

Equipment:

A Radar SpeedGun has been loaned to SpeedWatch by Hampshire Police, and was successfully used during a Manned Deployment. A Grant Application has been submitted to the Parish Council for the purchase of a Police approved Radar SpeedGun for use by Bramley Community Speedwatch.

If you have any questions/concerns regarding SpeedWatch please email: speedwatch@hampshire.pnn.police.uk or visit: www.hampshire.police.uk



Keep Safe and Watch Your Speed
Graham White, Bramley Speedwatch Co-ordinator

Speed Indicator Device (SID) DATA:

| SID Location | Days deployed | Traffic direction | % of vehicles exceeding 30 mph | No. vehicles exceeding 60 mph | Max speed recorded (mph) |
|--|---------------|-------------------|--------------------------------|-------------------------------|--------------------------|
| Triangle Minchens lane/The Street* | 7 | East Bound | 53% | 1 | 62 |
| Farriers central reservation | 7 | West Bound | 16% | 0 | 46 |
| The Street /Village Hall | 7 | East Bound | 42% | 0 | 60 |
| Farriers central reservation | 7 | East Bound | 35% | 0 | 55 |
| Minchens Lane after Clift Meadow entrance* | 7 | South Bound | 16% | 0 | 57 |
| The Street /Village Hall | 7 | West Bound | 27% | 0 | 60 |
| The Street /Village Hall | 7 | West Bound | 27% | 0 | 59 |
| The Street /Village Hall | 7 | East Bound | 43% | 9 | 68 |

Assured Roofing Ltd
www.assuredroofingltd.co.uk
Guildford
01483 399204
07961 609811

Proud members of **Checkatrade.com**
Where reputation matters

APPROVED ROOFERS
Approved & Recommended

Moss Removal from £285

Find & Repair a Leak from £325

Labels in image: DRY VERGE, GUTTERING, FASCIAS, SOFFITS

Whatever roofing work you require, our team of qualified, experienced roofers work to the highest standards every time.

- We specialise in: • New Roofs • Flat Roofs • Tile and Slate Roofs • Leadwork • Repointing
• Chimney Stacks • All Roof Repairs • Valleys Repaired • New PVC Fascias and Gutters • Moss Removal
All new works carry our fully insured 10-20 year back-up guarantee.

WE DO NOT USE PRESSURE WASHERS

- Safe ladder access installed • All moss cleaned by hand • Soft hand brushes used
- Hard wire brush only for tough areas • Anti-Moss and Algae treatment
- Gutters cleaned outlets unblocked • Clean and effective moss removal

Back in summer, local photographer **Neil Child**, from **Skeyeball Aerial Film**, asked permission to take some aerial photos of **St James's Church** using a drone. Here are two of the photos he took, which put a different and interesting perspective on our historic church.



The Basingstoke and Old Basing U3A

Our Creative Writing Group welcomes new members. If you feel you have a short story or even a book in you, then our small, friendly group could be just what you need. Our members enjoy writing for fun, and we share our writing in a relaxed, supportive setting. We meet twice monthly on the first and third Thursday afternoons.

Visit our webpage for full details www.basingstokeu3a.org/learning-1/Creative-writing



TNT FAMILY FITNESS:



Holiday clubs, parties with fun and games, 1-1 personal trainer.

I love my job. Contact me, Andy, on

[07787407901](tel:07787407901) www.tntfamilyfitness.co.uk



Rocky's Rambles

Claire Salem

Dog walking & Pet visits
Pet sitting from your home
Insured

DBS & DOG 1st AID TRAINED

0758 813 0799

 [clairspetcarefromurhome](https://www.facebook.com/clairspetcarefromurhome)

Hampshire County Councillor report- Calleva Division



County Deal update

Negotiations are poised to take place with central Government on plans for a Pan-Hampshire County Deal, with the aim of investing in Hampshire's economy and improving the lives of all residents and communities across the area - by bringing decisions and powers closer to people and places in the region.

Devolution proposals are now ready for formal negotiations with central Government, to secure the best possible deal for residents, businesses and communities across the whole Pan-Hampshire area, (covering Hampshire County Council, Southampton and Portsmouth City Councils, the 11 district and borough councils within the County Council administrative area, Isle of Wight Council and Bournemouth, Christchurch and Poole Council).

The combined prospectus can be viewed at <https://democracy.hants.gov.uk/documents/s100275/Pan-Hampshire%20Deal%20Prospectus%202022.pdf>

Support for warm winter hubs

Communities across Hampshire are being invited to apply to Hampshire County Council for support from the Leader's Community Grants Scheme in order to create a network of warm hubs this winter.

Voluntary and community organisations, including parish and town councils, can apply for a grant of up to £5,000 to develop and host warm hubs where people can gather together. This might be in the form of a regular coffee morning or the provision of a shared activity; creative ideas and concepts that will deliver support especially to our most vulnerable residents are particularly welcome. Information can be found at <https://>

www.hants.gov.uk/community/grants/grants-list/leaders-community-grants.

Additional funding is also available to community groups from the Adult Services' Local Solutions Grant fund to support local people maintain their independence. This includes assistance to organisations offering finance and money management support to those unable to easily access existing services, as well as for groups undertaking projects to help vulnerable people by reducing social isolation and loneliness. Details can be found at <https://www.hants.gov.uk/community/grants/grants-list/local-solutions-grants/local-solutions-grant>

National Census

Data about the population in your local area can now be viewed readily on census maps published by the Office for National Statistics, search for details at <https://www.ons.gov.uk/census/maps>.

Roads

Hampshire Highways' commitment to reduce carbon emissions and mitigate against the impact of climate change achieved national industry recognition last month. Its Carbon Strategy, which aligns with the County Council's ambition to be carbon neutral by 2050, won the Environmental Sustainability Award as well as the Special Merit Award in this year's Highways Industry Awards. The Special Merit Award is a particular achievement in that it is selected by its peers in the industry.

Last month 7,456 square metres of carriageway were resurfaced across

the county, with 20,737 gullies and other drainage cleared, 6,535 potholes and other defects repaired and 5,489 square metres of footway repaired or resurfaced.

It is now prepared for the wetter and colder months ahead, with crews on standby 24/7, ready to salt the roads in snow and icy conditions, as well as deal with the impacts of high winds, heavy rain and flooding, such as those recently seen.

Police & Crime Commissioner

Donna Jones, Hampshire's Police and Crime Commissioner, has launched her annual precept consultation on council tax contributions to policing. The survey is online and will run until 4 December. This survey is to gather views on whether she should increase the level of council tax in support of policing, continuing investment in Hampshire and Isle of Wight Constabulary. The survey can be found at <https://www.hampshire-pcc.gov.uk/get-involved/consultations/precept-consultation>

The Commissioner has also published her annual report for 2021/22, providing an overview of her activities and key successes from when she took post in May 2021. It covers the recruitment of nearly 600 new police officers, extra funding for the region to tackle anti-social behaviour (ASB), domestic abuse and bespoke support for victims of sexual violence. It can be seen at <https://www.hampshire-pcc.gov.uk/wp-content/uploads/2022/10/Annual-Report-2022.pdf>

Cllr Rhyddian Vaughan MBE

Keep well this autumn

Add another layer of protection



Wash hands



Let fresh air in



Avoid others if unwell



Get vaccinated when invited



Hampshire Harmony

Hampshire Harmony is a vibrant, energetic and forward-looking ladies choir singing a wide range of genres and with an exciting rolling programme of new music.

We work hard but our rehearsals are always full of fun and laughter. Through our concerts, both locally and further afield, we raise much needed funds for a variety of charities.

We rehearse at Everest Community Academy and we are always ready to welcome new members. We are singing around Basingstoke in the run up to Christmas. (Dec 10th 10.30 at Tesco, 1.30 at Milestones; Dec 18th 11am at Waitrose and 1.30 Festival Place) If you see us, please do come and chat to us.

For more information contact membership@hampshireharmony.org

or visit our website at www.hampshireharmony.org.

You can also find us on Facebook: [@hampshireharmonychoir](https://www.facebook.com/hampshireharmonychoir)

Instagram: [@singwithhampshireharmony](https://www.instagram.com/singwithhampshireharmony)

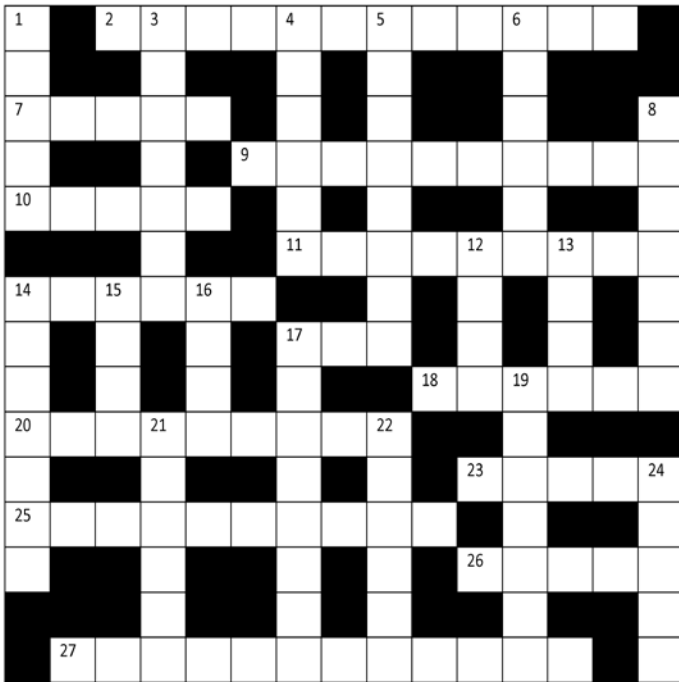
Twitter: [@HampshireHarmony](https://twitter.com/HampshireHarmony)
[@choir_ladies](https://twitter.com/choir_ladies)

Registered Charity No. 1058910



Cryptic Crossword No: 64

See page 31 for the answers.



Across

- 2 Busy time for the man in red. (9,3)
- 7 Normally upward direction. (5)
- 9 Season to leap perhaps. (10)
- 10 Tea as Sam would care to find it. (5)
- 11 Aid or tile about article. (9)
- 14 Relative more distant reportedly. (6)
- 17 Can material or money. (3)
- 18 Offshoot changing right for left to whiten. (6)
- 20 La Tara nut turns into arachnid. (9)
- 23 Gardening function produces more of the same. (5)
- 25 Mathematical equations are full of these. (10)
- 26 A greedy person finds a way to concur. (5)
- 27 Christmas cake not meant for the fire. (9,3)

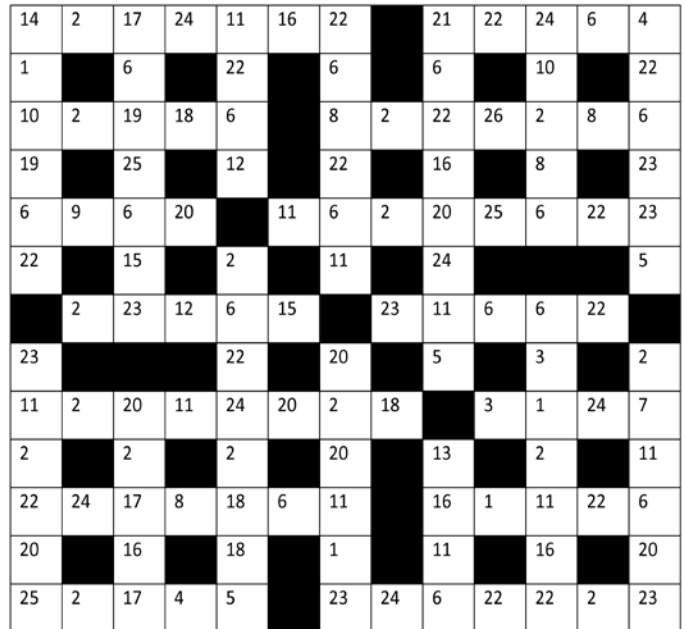
Down

- 1 Pleasant and kind are inbuilt qualities of this man. (5)
- 3 Just whats needed after being in the cold all night. (3,4)
- 4 Easy for Simon say. (6)

- 5 Mother, American soldier, agency and pole for entertainer. (8)
- 6 Overseas terrific for festive time. (6)
- 8 Hid lice around for dance. (7)
- 12 Exam perhaps where one is not expected to be quiet. (4)
- 13 Country where I ran and hid. (4)
- 14 Evergreen reportedly where furs are grown. (3,4)
- 15 Rip or indication of sadness. (4)
- 16 Level in the event. (4)
- 17 Belief in others is like rust without a fault in a way. (8)
- 19 Tempo or car. (7)
- 21 Opposite of 19 Down. (6)
- 22 Confused, I stage a youth protest, am I this. (6)
- 24 Pattern that really ends naturally down to initials. (5)

CodeWord No: 50

See page 31 for the answers.



Each number represents a unique letter from the alphabet and all 26 letters are used. Two letters are given to make a start.

Julia Tavener MCFHP MAFHP

Foot Health Professional
Foot care in the comfort of your own home



Toe nail cutting
Corns, calluses & hard skin
Diabetic foot care
Verruca treatment
Any other foot related problems

07875 137299 j.tavener@hotmail.co.uk

Jane's Reflexology & Reiki Healing

Jane Parsons
07815 042475

Bespoke Treatments offered
In the comfort of your own home
Or in my home therapy room

Gift Vouchers Available

janep6864@gmail.com

Pupil Voice

At Bramley school, one of our key aspirations is for the children to have a positive impact on the world and to be global citizens of the future. We have many ways where we promote pupil voice and enable children to lead aspects of school life linked to our school and wider community.

School Community



In September, we elected our student council. They had to prepare a short speech for their classmates who then voted for the best people to represent their class. Our council team meet fortnightly with Miss Oliver to discuss key actions for the school. This year, they have already begun to focus on how we can become more environmentally friendly in our school. They will develop ideas within their classes and then feedback to the whole council – together, the children will then choose ways to adapt how we work and promote being environmentally friendly at school.

As a higher accolade, our Year 6 children have the opportunity to campaign and be elected as House Captains. These children are the beacons of our school values of Love, Respect and Courage. We call upon our House Captains for many extra duties throughout the year. If you have come to one of our recent open mornings you will have been lucky to have had a tour from one of them. However, their biggest job is to be a role model to their peers and younger children

- which they must have continuously displayed in order to have been elected!

We have also introduced EARA representatives this year. Equality and Rights Advocates attend termly meetings with the Hampshire lead to help them continue to develop our school as a place where everyone feels represented, valued and respected. They are currently working hard to plan their first whole school assembly to teach others about their role.



Wider Community

Already this year, the children of our school have shown their commitment to supporting those who need it in our wider community. During Harvest, we were able to collect 258kg of food which is the equivalent of 613 meals – a fantastic community effort! Having the food stored in our entrance hall was a fantastic way for all the children to see just how much we had gathered. Our House Captains went in the school minibus with Mrs Moore to deliver our collection to the Basingstoke Foodbank. During discussions at the foodbank, the children realised that at the time of harvest, they were provided with lots of donations but at other times of the year their shelves were much emptier. House Captains have already started discussing plans for us to hold Spring or Summer harvests.

We are incredibly proud of how our values underpin so much of our time at Bramley C of E Primary and how our children are developing into confident citizens.

Little Apples

It's been such a busy time here, since half term. The children shared their tales of parties and "Trick or treating". They also enjoyed making some Halloween themed craft, playing in the witch's den and exploring the inside of pumpkins, making some lovely pumpkin sludge and stirring up the mess.

Some splendid Bonfire Night craft has been produced, with lots of sparkles and glitter. The children enjoyed telling us about their experiences of fireworks with all the exciting noises and colours. We heard about Guy Fawkes and the plot to blow up the Houses of Parliament over 400 years ago.

We have also been thinking about Remembrance. The children painted some lovely poppies and also made a poppy biscuit. We held a minute's silence on Friday 11th November and thought about soldiers and other people who look after us and help keep us safe.

For St Andrew's Day at the end of November, we will be making shortbread and learning about all things Scottish, before the Christmas Festivities start.

After a two-year absence because of Covid, we are performing our Nativity play on 15 December, before the children enjoy their Christmas Party. Our play focuses on the journey of the three wise men to visit the baby Jesus, with some variations for the very young, and young at heart! We are already practising the Makaton signs to accompany our songs. We have really missed having our families in at Christmas to watch this and enjoy a cup of tea in the hall, so this year should be really special. After the families leave, the children will enjoy a Christmas Party with an entertainer and we hope that Santa will have time to pop in to see us too.



We wish you all a very Merry Christmas and look forward to another busy, happy year in 2023.



Can we take control of our energy costs and help the environment?

Martin Heath of Loddon Community Energy, answers your questions.

Never have we been more mindful of how much energy we use. Whether you are concerned about rising costs, effects on the environment or both, there are things we can do to save money and our planet. Here we talk to Martin Heath, who has been described as a veteran of the renewable energy industry, and is a founder member of Loddon Community Energy, (a Community Benefit Society empowering the local community to take control of their energy).

What is community Energy?

Martin: Energy is vital for everything we do; whether that's moving a super tanker across the oceans or lighting the standby indicator on a TV. Without energy we can do nothing, it moves our vehicles, powers our gadgets and heats (and cools) our buildings. The trouble is, at the moment, we almost entirely rely on imported fossil fuels (oils and gas) to generate the energy we need. This produces massive amounts of greenhouse gas emissions and air pollution. In Basingstoke we produce about 1 million tonnes a year. Almost all our energy companies are owned by large multi-nationals. They make huge profits, none of which benefit us, and we have little (or no) control over what they do.

But there is an alternative. We can produce our own electricity here in Basingstoke, we can own the assets that generate it, we can control it, and even better, the profits can be used for good causes here in our local communities.

So, you're selling something?

Martin: Loddon Community Energy (LCE) is owned and managed by local people; we have a say on what it does and how it does it. Electricity generated from the solar panels we will install is sold to local schools, local communities or to whoever is under the roof. The revenue generated is used to pay back investors and any surplus is re-invested in other projects and provides a Community Fund to help local people with energy efficiency and energy poverty.

The local community invests in renewable energy projects through "crowd funding" - members of the local community invest in community solar energy projects on local roofs or spare land. That is what community energy is all about.

Where's the catch?

Martin: No catch. Each investor has a share in a local community energy co-operative. Each year they are paid a small amount of interest on the investment. Surplus money is then used to invest in other community projects for example free solar panels on the local school or doing something about fuel poverty or doing free energy efficiency surveys.

How do I know this isn't a scam?

Martin: LCE is registered with and regulated by the Financial Conduct Authority and Cooperatives UK and is a member of Community Energy South who currently have over 50

members. Our founders are all local residents and are working on the project without pay.

I've no money to invest, can I still support LCE?

Martin: Absolutely, if you are interested in finding out more, or you know of a large roof or unused field, or you just want to help our local community to generate its own cheap and clean electricity then please do let us know.

What are LCE doing for the community now?

Martin: LCE is already active and we are training energy champions who will be able to advise on how to make your home more energy efficient and how to reduce energy bills. If you know of someone who needs help, or you want to be an energy champion, please do contact us.

What are Energy Champions?

Martin: Energy Champions will visit local coffee mornings and similar events to give free advice on how to save on fuel bills. In the long term they will also be able to visit your home and give specific advice on how to save.

How can I keep up to date with what's happening?

Martin: You can sign up to our contact list by visiting our website at <http://loddoncommunityenergy.org.uk/>, follow us on Facebook by searching Loddon Community Energy or simply email us at info@loddoncommunityenergy.org.uk.

We'd love to hear from you.



A not-for-profit benefit society, run by local people for local people

Our Community - Our Energy

What do we do?

Supporting energy reduction in the local area by

- Energy advice for households
- Supporting energy reduction in the local area
- Helping to cut energy costs for local businesses

and

Community investment in local renewable energy projects by:

- Ethical investment
- Cutting our carbon footprint

Get involved!!!

Sign up to receive details of our forthcoming share offers
Volunteer to help run Energy Cafe; full training provided
Join Loddon Community Energy:
financial or legal experience
would be very useful but the main requirement is a desire to get involved and take an active part in reducing the carbon footprint in our area

Contact us via our website www.loddoncommunityenergy.org.uk
Email: info@loddoncommunityenergy.org.uk

FCA Regulated Community Benefit Society no. 8860

Ivy – Friend or Foe?

Round here, we've got a pretty good showing of trees – from ancient oaks to a number of new plantings, and luckily not an awful lot of damage from the storms earlier in the year. I guess we see the trees without looking at them, really, though we'd certainly notice if they all disappeared. I still miss the big horse chestnut that was down by the granary, a pity, but it had to go. Nor do we see the ivy on the trees – it's just sort of there. Sometimes the word 'parasite' is applied to this plant: that's not just a bit unkind, it's inaccurate and I'd have imagined actionable, were it at all litigious.

Luckily it isn't that way inclined, though it does have a reputation of being invasive, subversive and awful persistent. Turn your back and it'll be over the fence, under the eaves, up the wall, round the gutters, and tapping on the window-panes in the wind. It grips hold of just about anything, and it'll survive drought, shade, poor soil, and a lot of pulling and cutting: a well-qualified weed, I suppose, another prejudicial term. You can't say one is good and another bad: a plant's got to do what a plant's got to do.

But parasite it is not. Though hard to define precisely, the main characteristic of a parasite is that it relies on another life form, but doesn't do it any good. Lots of fungi and bacteria, for instance, hitch onto or inside another plant or animal, and help the host by supplying or digesting nutrients: that's symbiosis, a cosy relationship of mutual benefit. A free-loading parasite, at best, will use its chosen victim, taking food, warmth, shelter, or whatever else is going; at worst, it will debilitate, injure or even kill its host. Mistletoe then, is a parasite, it takes water and nutrients from the host tree, without doing very much in the way of photosynthesis to support its own lifestyle, though it does come in handy around Christmas.

Ivy however, has all its own life support systems – roots in the ground and great glossy leaves to harvest daylight. It's a source of nectar and pollen invaluable to insects in the autumn and winter, when more delicate flowers have retired for the season: wasps, bees and hoverflies in particular seek them out. The berries are rich in fats and attract both birds and small mammals, ideal to top up reserves before wintering. The ground cover ivy affords protection for wildlife in snow and frost conditions, and the higher growth gives places for safer nesting off the ground.



But doesn't it suffocate trees, pull down guttering, break open brickwork and rot fencing? Is the jury out on these points, or are the jurors just overwhelmed by all the vague and conflicting evidence, both from the prosecution and the defence? For a start, though, ivy won't strangle a tree: it's not going to harm a healthy tree in scrambling up the trunk – only if it takes over the crown of the host will it seriously compete for light. On buildings, sound cement mortar won't be damaged – older lime mortars though could be degraded. Ivy on a house wall exposed to the cold east winds could give some protection and insulation, but exposed to the west it may hold moisture. In either case it'll need to be regularly cleared from window frames, woodwork, eaves and guttering, not an easy job.

One of the plant's clever tricks is how it manages its leaves. As it's usually

climbing up something, the wide, three-lobed leaves are hung from the stems so that they dangle vertically, to get as much light as possible – hence ivy's shade tolerance. The surfaces are waxy to conserve moisture, as this may have to be drawn up a long way, and in icy conditions there's less water available, which can be a problem for evergreens trying to grow in the winter. When the plant goes from the juvenile climbing stage to the adult flowering form, perhaps at the top of a tree or higher up your wall, the leaf shape and structure transform. Instead of just marching upwards, putting out hairy roots to hang on, the shoots sprout outwards with slim-line leaves and prominent flower clusters: it could be a different plant.

Ivy, then, is a friend. Just occasionally, though, it needs to be reminded of that fact, and how it should behave. That's ok, it's really not the sensitive type.

ROTARY CHRISTMAS SHOEBOX THANK YOU

A huge thanks to all who contributed shoeboxes for our annual appeal, 670 shoeboxes full of toys and warm gloves & hats etc. are on the way to under privileged children in Moldova, Montenegro, Romania and Albania. We couldn't do this without the generosity of our local community who help spread a little happiness to children who have little. We were donated a huge amount of beautiful hand knitted clothes and toys, too many to go in in the shoeboxes but we were able to fill 9 packing cases with these knitted items, they will be delivered into the hands of Rotarians in those countries to distribute to those in need. Through our Rotary channels a number of shoeboxes and some warm knitted items are also on their way to children in Ukraine. Our Wessex District Rotary sent 18,000 Christmas shoeboxes in 2021 from Hampshire. www.rcbd.org.uk

Phillips Law

Leave a gift for charity

Whilst many Christmas presents will be forgotten as soon as they have been unwrapped, there is a festive gift that can make a big difference – leaving a legacy to a charity.

Three quarters of Britons regularly give to charity in their lifetimes, but only 6% include a charity when writing a Will.



Without this source of income many charities would have to cut important services and some could not exist.

Charities rely on both regular donations and legacies in Wills to be able to continue their good work. Leaving money to charity in your Will can make a huge difference and what a wonderful way to ensure that your legacy lives on after you've gone.

Donations can be as small or as large as you wish, as every gift makes a difference. A gift made to a UK registered charity is also inheritance tax free.

If your estate is large enough to be chargeable to inheritance tax, gifts to charity will reduce not just the overall amount of tax paid by the rest of your estate but also the rate of tax, resulting in your family getting the most of their inheritance.

For help in leaving a charitable legacy or other advice on Wills, please contact our Wills, Trusts and Probate Team on 01256 460830.

More information about the wide range of legal services offered by Phillips Law, can be found at www.phillips-law.co.uk

Cross House

These excellent church rooms are available for private hire



Ideal for functions such as birthday parties, baptism teas, keep-fit classes, presentations, wedding receptions, boardroom meetings and classes of various sizes.

Large Hall, main meeting room, further rooms, fully equipped kitchen, Wi-fi.

For further details or to book ring Steve Day on 07341 552732 or email crosshousebramley@gmail.com



Why Choose Roller Garage Doors Centre?

- ✓ Best price guarantee
- ✓ **FREE** 7-year motor warranty
- ✓ A huge range of styles and colours
- ✓ Insurance Approved options available
- ✓ Free no obligation quotations
- ✓ Professional engineers to survey & install

Visit Our Showroom:

Unit 7 Bacchus House, Calleva Park, Aldermaston, RG7 8EN

Checkatrade

Call: **01189 817300** To book your free home survey

Visit: **www.rollergaragedoorscentre.co.uk**

Probus Hears About Three VCs

Nick Saunders was the latest speaker at the Probus Club of Basingstoke. He is a part time archivist in the Royal Hampshire Regiment in Winchester with interest in three members of the Hampshire Regiment awarded the VC in WW1.

In 1915 2nd Lt George R D Moor was only eighteen years old during the Gallipoli campaign in the Dardanelles. The 2nd battalion had lost 700 men and five Commanding Officers in six weeks.

A detachment which had lost most of its officers was rapidly retiring before a heavy Turkish attack. Recognising the danger to the rest of the line he dashed 200 yards and stemmed the retirement, led back the men and recaptured the lost trench. He died of the Spanish flu on November 3rd, 1918, aged just twenty-one. As well as the VC he had also been awarded the MC and Bar.

On 31st July 1917 2nd Lt Denis GW Hewitt was at Ypres. After capturing his first objective he advanced but was hit by shrapnel that set alight signal flares in his haversack. Despite

severe burns he led his company under heavy machine gun fire, capturing and consolidated his objective. He was killed by a sniper. He had been educated at Winchester College and Sandhurst and was aged just nineteen.

At Ypres on 20th September 1917, 2nd Lt Montague SS Moore's actions earned him the Victoria Cross and subsequently the Croix de Guerre. He led seventy men across 500 yards meeting heavy machine gun fire with the result that he arrived at his objective with only a sergeant and four men. Undaunted he bombed a large dug out and took 28 prisoners, 2 machine guns and a light field gun. Reinforcements brought the number to sixty. Using enemy rifles and bombs they defended the position under constant fire for 36 hours beating off counterattacks. By this time his force was reduced to just ten men. 2nd Lt Moore eventually rescued his wounded and withdrew under cover of a thick mist. He was only eighteen years old.

See www.probusbasingstoke.club for more information about this social club for retired professional and business managers



THE RT. HON. RANIL JAYAWARDENA, M.P. NORTH EAST HAMPSHIRE

What a year it has been. Bramley and Little London, like the rest of North East Hampshire, will have experienced some great highs and lows this year. For me, this was epitomised by our joyful celebrations of Her Late Majesty Queen Elizabeth II's Platinum Jubilee in June, juxtaposed with the sadness that we collectively felt as a nation, following Her Late Majesty's sad death in September. It is on occasions like these where our communities across North East Hampshire mean more to us than ever.

These are challenging times. I know that. I am under no illusion about how difficult the last year has been for some local families and businesses, following the difficulties of the pandemic. Indeed, I've continued to receive an unprecedented level of correspondence from constituents this year. Whilst I have had to prioritise cases of the utmost urgency throughout, I deal with every piece of correspondence from constituents as soon as that is possible. You may be interested to

learn that my team and I have worked on 11,000 individual cases in the last year alone – excluding all the other emails that come in about policy from lobbyists and others – so the hard work continues.

I have seen – from the inside – Ministers and civil servants across HM Government working to do all they can to support the public too and, whilst I am no longer part of HM Government, I will continue to put pressure on Ministers to deliver. By way of an example, you can read the Parliamentary Questions I posed to HM Government prior to my appointment as a Minister, and since, at: bit.ly/ranilasks

From May 2020 to this September, it was a privilege to serve as Minister for International Trade, where I worked to back British businesses around the world, bulldozed 400 trade barriers, and secured trade deals. Between us, the then Trade Secretary – Liz Truss – and I reached free trade agreements with 71 countries.

I am very grateful to her for appointing me as Secretary of State for Environment, Food and

Rural Affairs on being made Prime Minister and, though we've had international economic challenges to deal with, I am pleased to have laid the groundwork to 'free our farmers' and to continue protecting our environment. From food security and supporting our farmers, to improving water infrastructure and water quality, I was pleased to work with people nationwide to work towards a thriving rural economy and a cleaner environment. After much work in my tenure, my successor will now be able to take forward the plans set in motion.

Heading into 2023, we have much to be thankful for, and much to look forward to. I will continue to work hard for the people of Bramley, Little London and beyond, where it continues to be an enormous honour to serve as your local Member of Parliament.

Should you need assistance, I am here for you, so do get in touch: email@ranil.uk. As it has been since 2015, I remain on your side. I wish you all a very happy Christmas and a peaceful 2023.

| Mondays | |
|---|-----------------------|
| <i>Badminton</i> | Village Hall |
| <i>Petite Dance</i> | Village Hall |
| <i>Hipp Pilates</i> | Clift Meadow Pavilion |
| <i>Pilates 9am</i> | Clift Meadow Pavilion |
| <i>Pregnancy Yoga with Sam 6pm</i> | Clift Meadow Pavilion |
| <i>Yoga with Sam 7.30pm</i> | Clift Meadow Pavilion |
| <i>Classical Pilates, 6pm-7pm</i> | Village Hall |
| <i>Kickboxing 6-7pm juniors, 7-8pm adults</i> | Brocas Hall |
| <i>Cubs 6.30-8pm</i> | School Hall |
| <i>Trail Runners 7.30pm</i> | Clift Meadow car park |

| Tuesdays | |
|--|----------------------------------|
| <i>Parish Council Meetings 3rd Tuesday of the month</i> | Bramley Room, Village Hall |
| <i>Badminton</i> | Village Hall |
| <i>Bell Ringing 8pm</i> | St James's Church |
| <i>Petite Dance</i> | Village Hall |
| <i>Short Mat Bowls</i> | Village Hall |
| <i>WG Pilates 9.15 – 10.15am</i> | Cross House |
| <i>Pilates 9.30am</i> | Brocas Hall |
| <i>Mother & Toddler group 10.15 - 11.45am</i> | Clift Meadow Pavilion |
| <i>Beavers 5.45pm - 6.45pm</i> | School Hall |
| <i>WG Pilates 6.45 – 7.45pm</i> | Cross House |
| <i>Scouts 7-8.30pm</i> | School Hall |
| <i>Hipp Pilates 7-9pm</i> | Clift Meadow Pavilion |
| <i>Table Tennis - 7pm</i> | St Stephen's Hall, Little London |

| Wednesdays | |
|--|-----------------------|
| <i>1st Bramley Brownies</i> | Village Hall |
| <i>Wednesday Club 10am to midday</i> | St Stephen's Hall |
| <i>Guides 7.30pm</i> | Village Hall |
| <i>WG Pilates 9.15 – 10.15am</i> | Cross House |
| <i>Bramley Tea and Coffee morning 10-11.30am</i> | Clift Meadow Pavilion |
| <i>Walking 4 Fitness & Friendship 6.40 for 6.45pm (April-Sept)</i> | Clift Meadow car park |
| <i>Pilates 7-8pm</i> | Clift Meadow Pavilion |
| <i>Trail Runners 7.30pm</i> | Clift Meadow car park |

| Thursdays | |
|--|----------------------------------|
| <i>Bramley & Romans Floral Society 1st Thursday</i> | Sherfield on Loddon Village Hall |
| <i>Dance Club</i> | Primary School Hall |
| <i>Pilates</i> | St Stephen's Hall |
| <i>WI 2nd Thursday</i> | Village Hall |
| <i>Yoga for Sleep and Stress 1st Thursday</i> | Village Hall |
| <i>Lynden School of Dance & Gymnastics 3.30 to 7.15pm</i> | Brocas Hall |
| <i>Perform 5.45pm</i> | Clift Meadow Pavilion |
| <i>Hatha Yoga 6.30-7.30pm</i> | Cross House |
| <i>Classical Pilates - 6.30-7.30pm</i> | Village Hall |
| <i>Petite Dance 6.45pm</i> | Village Hall |
| <i>Hipp Pilates 7-8pm</i> | Clift Meadow Pavilion |

| Fridays | |
|---------------------------------|-----------------------|
| <i>Hatha Yoga 9.30-10.45am</i> | Cross House |
| <i>Hipp Pilates 1.30-2.30pm</i> | Clift Meadow Pavilion |
| <i>Perform 3.30pm</i> | Clift Meadow Pavilion |
| <i>Youth Club 5pm</i> | Brocas Hall |

| Saturdays | |
|-----------------------------|---------------------|
| <i>Petite Dance</i> | Village Hall |
| <i>Tennis (age 7-13)</i> | Clift Meadow |
| <i>Karate 11.00-12.00pm</i> | Primary School Hall |

| Sundays | |
|---|--|
| <i>See page 5 for Church services at St James's Bramley</i> | |

Do you have a listing on this page? If so, please can you check that the details are correct and let me have the timings if they are missing. Any corrections or additions can be emailed to editor@bramleymagazine.org.uk THANK YOU

Contact Details for Village Clubs and Organisations

| Organisation | Name | Tel No | Email | Remarks |
|--|---------------------------------|-------------------------------|--|--------------------|
| Parish Council | Maxta Thomas | 07810 692486 | www.bramley-pc.gov.uk clerk@bramley-pc.gov.uk | Not for bookings |
| Clift Meadow | Bookings Team | 01256 260270 | bookings@cliftmeadow.org.uk | Bookings |
| Cross House | Steve Day | 07341 552732 | crosshousebramley@gmail.com | Bookings |
| Village Hall | Catriona Hayward | 07464 749997 | Bookings@bvht.org.uk | Bookings |
| School Hall | Alison Tarrant | 881339 | | |
| 0-5s Club | Christine Delve | 07739 763618 | christinedelve@gmail.com | |
| Activ8 Youth Club | Ed Ives | 07964 069390 | | |
| Badminton | Jane Matthews | 881647 | | |
| Beavers, Cubs & Scouts | Jodie Saunders | 881113 | jodie@bramley-scouts.org.uk | |
| Bell Ringers | Jonathan Barclay Smith | 541251 | rjbarclaysmith@gmail.com | |
| Bramley United FC | Mick Walsh | 07802 912615/ 01256 881241 | michael.p.walsh@openreach.co.uk | |
| Bramley Volunteer Drivers | | 07787 166924 | Visit us on Facebook | |
| Brownies | Katie Slater and Jayne White | 07545 319342 | bramley.brownies@gmail.com | Now Weds only |
| Classical Pilates | Naomi | | naomi@nbkpilates.co.uk | |
| Clift Meadow Youth Cricket (Old Basing CC) | Nick Cooper | | nickcooper1@sky.com | |
| Clift Meadow Youth Football (Loddon Sports) | | | loddonfcsecretary@outlook.com https://www.loddonsportsfc.com | |
| Country Music | Roy Seymour | 07917 744780 | | No children please |
| Floral Society | Linda Dove | 01256 886167 07842 339161 | | |
| Guides | Pam Luck | 07890 152846 | firstbramleyguides@yahoo.com | |
| Hipp Pilates | Jo Kemp Williams | 07557 412400 | jo.kemp-williams@outlook.com | |
| Kickboxing | Leigh Bushnell | 07730 678049 | wkmabikma@gmail.com | |
| Little Apples | Jo Whatley & Sian Davies | 07598 588460 | manager@littleapples.org | |
| Lunch Club | Chris Woodward | 884065 | | |
| Lynden School of Dance & Gymnastics | Charlotte | 07717 803080 | | |
| Mother & Toddler group | Christine Delve | 07739 763618 | | |
| Naturally Yoga with Sam | Samantha Webber | 07713 349227 | www.naturallyyoga.co.uk sam@naturalnook.co.uk | |
| Perform | Gemma Payne | 07825 916496 | gemmapayne@perform.org.uk | |
| Petite Dance | Louise Pain | 07877 890673 | misslouise.petite@outlook.com | |
| Pilates | Heather Lewis | 07785 254313 | hsfitnessuk@mac.com | |
| Pilates | Kelly James | 07789 487499 | kkellyjames@aol.com | |
| Pilates (WG Pilates) | Wendy Gill | 07961 102535 | wendygill44@yahoo.co.uk | |
| Royal British Legion | Rhydian Vaughan | 07774 681516 | | |
| Short Mat Bowls | Judy Foyle | 881821 | stevefoyle@hotmail.co.uk | |
| Side by Side Dog Training | Carolann Dyson | 07779 121440 | sidebysidedogtraining@gmail.com www.sidebyside-dogtraining.co.uk | Bookings |
| St Stephen's Hall | Doreen Quilter | 850394 | doreen.quilter@btinternet.com | Bookings |
| Tennis (Clift Meadow) | Simon | 07904 340004 | | |
| Thula Mama | Rebecca Cooch | 07971 798945 | rebecca.cooch@gmail.com | |
| Trail Runners | Richard Perkins | | richardperkins@yahoo.com | |
| Walking 4 Fitness & Friendship | Facebook | | See Facebook: Walking 4 Fitness & Friendship | |
| WI | Pat Cole | 881715 | gpcoles37@gmail.com | |
| Wilder Bramley | | 07503 155669 | wilder.bramley@gmail.com or visit us on Facebook | |
| Yoga | Mark Golding | 07969 890722 | goldingyoga@gmail.com goldingyoga.com | |

CLASSIFIED ADVERTS

To advertise in the classified section and reach 2000 homes in and around Bramley for as little as £2 per line, contact: Keith Dillaway
 bram.mag.adverts@gmail.com

Traditional Plasterer (Dave): All aspects of plastering. Small works welcome 07958 670774 - 01256 364991

Wildlife TV presenter Megan McCubbin welcomed as new President of Hampshire & Isle of Wight Wildlife Trust

The Springwatch presenter and conservationist assumes the role alongside co-presenter Chris Packham who becomes a Vice President for the Trust

Rising television star Megan McCubbin said: "I am over the moon to be the next President for the Hampshire & Isle of Wight Wildlife Trust. "I have so much admiration for the fundamental work that the charity carries out - from the reintroduction of key species to their community conservation projects.

As well as presenting on the BBC's Springwatch and Autumnwatch programmes, McCubbin has recently co-authored her first book - Back to Nature: How to Love Life - and Save It - and is also a keen nature photographer. McCubbin's popularity and enthusiasm for wildlife will help the Trust reach new audiences and inspire more people from a wider range of ages and backgrounds to get on nature's side.

The Trust is currently working towards its goals of inspiring at least one in four people to take action for nature, and to push for at least 30% of land and sea to be protected and restored for nature by 2030.

New Forest-based Packham, who is McCubbin's stepfather, added: "I am delighted to join the superb Hampshire & Isle of Wight Wildlife Trust as a Vice President.

To find out more about the vital conservation work that Hampshire & Isle of Wight Wildlife Trust is involved in, visit www.hiwwt.org.uk

If something you ordered hasn't arrived

If you bought something from a business to be delivered, it's the seller's responsibility to make sure the item is delivered to you.

If the seller used a courier, they should chase the courier to find out what has happened to your order - it's not your responsibility.

Check the delivery address you gave the seller. Then contact them and ask where your order is.

If the seller claims they've delivered it or don't know where it is, you can ask for a redelivery. You might be able to get a refund in some circumstances.

If your item left with a neighbour or somewhere else has gone missing

What you can do depends on whether your item was delivered by Royal Mail or a courier.

Your item was delivered by Royal Mail

If Royal Mail left something with a neighbour or in a certain place because you told them to, it's not the seller or Royal Mail's responsibility if it gets lost.

If Royal Mail left something with a neighbour or in a certain place and you didn't tell them to, it's the seller's responsibility if it gets lost. You should contact the seller to ask for a redelivery or a refund - you can phone, email or write a letter.

Your item was delivered by a courier

Check your terms and conditions or account details - they might include other places for delivery, like your porch or a neighbour's house. If you agreed to them, it's not the seller's responsibility if your order has gone missing.

If your item wasn't delivered to the location you agreed, it's the seller's legal responsibility to sort out the issue. You can ask them to redeliver your item. You can ask for a full refund if:

- a delivery date was essential and wasn't met
- a delivery date was agreed but wasn't essential, and a second date also wasn't met
- no delivery date was agreed and a second chance to deliver was not successful

A delivery date is essential if you told the seller you needed your delivery by a specific date. An item can also be considered 'essential' if it's obvious from the circumstances. For example, a wedding cake that was ordered for the day of a wedding.

For either a refund or a redelivery, you can phone, email or write a letter

If you would like help dealing with a consumer problem, the cost of living or any other issue, please contact Citizens Advice to see how we can help.

Call us on 0300 3309 064

Chat online: citizensadvice.org.uk/contact-us

Website: www.basingstokeandtadleycab.org.uk

Or search on the National Citizens advice website www.citizensadvice.org.uk



Spencer & Peyton

Established 1961

3rd Generation family owned and run
 Funeral Directors and Monumental Masons
24 Hours

Our family serving your family for over 60 years

380 Worting Road, Basingstoke, RG22 5DZ
01256 323165
 The Flower Girl florist on site

7 London Road, Hook, RG27 9DY
01256 761717

Trading Standards approved
 Pre-paid funeral plans discussed without obligation
funerals@spencerandpeyton.co.uk
www.spencerandpeyton.co.uk



Cryptic Crossword No: 64 Solution

- | | | | |
|----|----------|----|---------------|
| 24 | TREND | 27 | CHOCOLATELOG |
| 22 | AGEIST | 26 | AGREE |
| 21 | ADAGIO | 25 | EQUALITIES |
| 19 | ALLEGRO | 23 | PLANT |
| 17 | TRUSTFUL | 20 | TARRANTIA |
| 16 | EVEN | 18 | BLANCH |
| 15 | TEAR | 17 | TIN |
| 14 | FIRTREE | 14 | FATHER |
| 13 | IRAN | 11 | EDITORIAL |
| 12 | ORAL | 10 | ASSAM |
| 8 | CELLIDH | 9 | SPRINGTIME |
| 6 | EASTER | 7 | NORTH |
| 5 | MAGICIAN | 2 | CHRISTMAS EVE |
| 4 | SIMPLE | | |
| 3 | HOTBATH | | |
| 1 | SANTA | | |
- Down

CodeWord No: 50 Solution

| | | | | | | | | | | | |
|---|---|---|---|---|---|---|---|---|---|---|---|
| A | R | R | E | I | S | | Y | D | N | A | H |
| | O | | T | | U | | L | | O | | C |
| R | T | U | O | | T | E | L | G | N | R | I |
| | A | | V | | C | | A | | A | | A |
| I | U | Q | | L | A | C | I | C | T | A | T |
| | Q | | Y | | C | | R | | | | S |
| R | E | E | T | S | | W | E | K | S | A | |
| | | | I | | T | | A | | W | | R |
| R | E | R | C | A | E | T | | C | E | X | E |
| | G | | O | | R | | K | | H | | P |
| G | A | B | A | R | A | G | | L | E | A | P |
| | M | | E | | E | | R | | E | | U |
| E | R | I | F | | R | O | T | N | I | A | J |

WE'RE MORE THAN JUST A LEAKY TAP



Boilers

Installations
Servicing
Breakdowns

Bathrooms

Cloakrooms
En-suites
Shower rooms



Plumbing

Taps
Toilets
All plumbing jobs




Contact us for a FREE estimate





info@catlinph.co.uk • 07774 741021



All Seasons Window Cleaning



Reliably serving the community for over 20 years

Additional services include:

- Driveway cleaning •
- Cladding/signage cleaning •
- Gutter/fascia/soffit cleaning •
- Conservatory roof cleaning •
- Pure water - no chemicals •



**Call STEVE on
01256 353727**



Email: info@allseasonswindowcleaning.com
Web: www.allseasonswindowcleaning.com

Bramley Osteopaths

Becky Hall MSc (Paed Ost), BSc (Ost Med), ND, Dip SMT
REGISTERED OSTEOPATH

7 St Marys Avenue, Bramley, Hants RG26 5UU
email: beckyhall@bramleyosteopaths.com
www.bramleyosteopaths.com
phone: 01256 884139

Disclaimer: Bramley Magazine is intended to provide readers with information they may find useful and of interest. We take all reasonable steps to keep this information current and accurate, but errors can occur. The editor reserves the right to make changes to any contributions. Bramley Magazine is not responsible for and does not endorse any advertising, products, or opinions expressed in this publication and shall not be liable to any party as a result of information published herein.

All photographs are included with kind permission and may not be reproduced.

**30 Years
serving the local
community**



**RAINBOW
DOUBLE GLAZING LIMITED**

1992-2022

Your truly local double glazing company

30 successful years



| Energy Window | |
|---|---------------------------------------|
| | A |
| Energy Index (Uw) (kWh/m ² /year) | 0 |
| Thermal Transmittance (U _t) (W/m ² ·K) | 1.6 W/m ² ·K |
| Solar Factor (g _v) (%) | 8.85 |
| Effective Air Leakage (q _l) (m ³ /h·m ²) | 2.00 m ³ /h·m ² |
| The climate zone is: | UK |

**Windows • Doors • Roofline
Conservatories • Orangeries
Entrance Porch • Garage Conversions
Rainbow Warm Roof Conversions**

- No deposit**
- No hassle**
- Energy 'A' Rated**
- 10 year Guarantee**
- Payment on completion**



For a free no-obligation quotation please call FREEPHONE:

0800 026 46 42 or 0118 970 1770

www.rainbowdoubleglazing.co.uk