

Archaeological Trial Trenching of Land adjacent to Commodity House, Braxted Park Road, Little Braxted, Essex CM8 3EW

NGR: TL844156

Site Code LB15

**Touchstone
Archaeology**

Report on behalf of Smart Planning Ltd

Date of report 19/10/2015

TOUCHSTONE ARCHAEOLOGY

The Ridings, White Elm Road, Danbury, Essex CM3 4LR

Tel: 07976 275180

zoe@touchstonearchaeology.com www.touchstonearchaeology.co.uk

Contents

1.0 INTRODUCTION.....	4
2.0 SUMMARY.....	4
3.0 PLANNING BACKGROUND.....	5
4.0 SCHEDULE OF VISITS.....	5
5.0 AIMS AND OBJECTIVES.....	6
8.0 ARCHAEOLOGICAL & GEOLOGICAL BACKGROUND.....	6
9.0 METHODOLOGY.....	6
10.0 RESULTS.....	7
12.0 FINDS.....	7
13.0 DISCUSSION.....	7
14.0 CONCLUSION.....	7
15.0 ACKNOWLEDGMENTS.....	8
REFERENCES.....	8
APPENDIX 1 - ECC HER Summary Form.....	9

List of Plates:

Plate 1. Aerial Photograph of site (Google 2006)

Plate 2. Service Trench 1

Plate 3. Service Trench 2

Plate 4. Service Trench 3

Plate 5. Base of Trench

Plate 6. Land drainage pipe

List of Figures:

Figure 1. OS Map 1993 1:2500

Figure 2. Proposed development

Figure 3. Plan of trenches in relation to Solar Panels

Conditions of Release

All rights including translation reserved. No part of this publication may be reproduced, stored in a retrieval system, or transmitted in any form or by any means electronic, mechanical, photocopying, recording or otherwise without prior written permission from TOUCHSTONE Archaeology.

Archaeological Monitoring of

Land adjacent to Commodity House, Braxted Park Road, Little Braxted, Essex CM8 3EW

Site Code LB15

Date of report: 19/10/2015

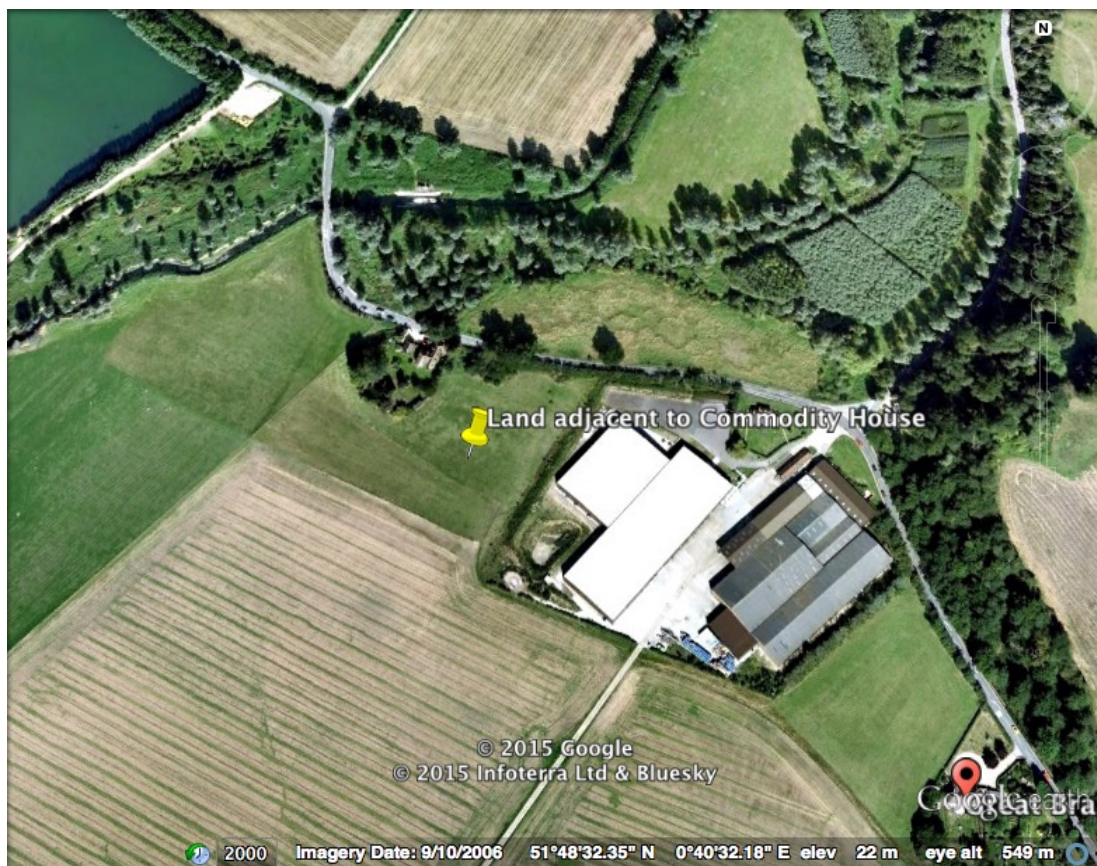


Plate 1. Aerial view of site (Yellow pin) showing the site prior to development.

(Google Earth 9/10/2006: Eye altitude 549m).

1.0 Introduction

On 30th September Touchstone Archaeology carried out Archaeological Monitoring on ground works involved in the installation of Solar Panels on land adjacent to Commodity House, Braxted Park Road, Little Braxted, Essex CM8 3EW. (Fig. 1 & Plate 1).

2.0 Summary

1.2. The Planning Application Number for the development is FUL/MAL/15/00665.

1.3. The works were carried out on behalf of the owner and instructions received from Smart Planning Ltd.

1.4. The Archaeological Monitoring was to watch for any signs of archaeological activity. In particular, any evidence relating to crop marks located within 250m to the south.

1.5. The weather was fine and dry.

1.6. The site was a ploughed field that comprised part of a farm, bounded to the south by a hay field, to the east by a meadow and tree copse, to the west by Commodity House (a large agricultural building of L shaped articulation) and farm track way, to the north by Braxted Park Road.

1.7. The archaeologist walked the ploughed field to assess the surface for evidence of archaeological deposits but none were found.

1.8. Archaeological Monitoring was carried during the machine digging and levelling (Plates 1-4).

The archaeological work was undertaken in one phase.

Phase 1: 8no Service trenches dug. All services trenches were to connect to the existing services.

Trench 1: East-West - L.16.3m x W.0.260m x D.0.700m

Trench 2: North-South from T1 - L.10.4m x W.0.260m x D.0.700m (Begins at W end of T1)

Trench 3: East-West from T2 - L.5.5m x W.0.260m x D.0.700m (Begins on east flank of T2)

Trench 4: East-West from T2 - L.2.7m x W.0.260m x D.0.700m (Begins on east flank of T2)

Trench 5: East-West from T2 - L.2.45m x W.0.260m x D.0.700m (Begins on east flank of T2)

Trench 6: East-West from T2 - L.3.37m x W.0.260m x D.0.700m (Begins on east flank of T2)

Trench 7: East-West from T2 - L.2.9 m x W.0.260m x D.0.700m (Begins on east flank of T2)

Trench 8: East-West from T2 - L.2.6m x W.0.260m x D.0.700m (Begins on east flank of T2)

1.9. Stratigraphy:

Trenches 1,2,3,4,5,6,7,8

0 - 100 depth – Topsoil

100 – 600 depth – Clay (orange brown sticky clay clean with no inclusions)

600 – 700 depth – Flint and pebble layer (Flints c.10cm x 50cm, Pebbles c.3cm x 2cm)

Trench 2

0.600m from north end gravel fill began and ended at the connection with Trench 4. Google earth pictures revealed a gravel pile sited here during the construction of the Commodity House.

1.10. Although the archaeological potential was medium to high the Archaeological Monitoring revealed no buried archaeological features and one section of undated field drainage pipe was retrieved.

Circular fluted Drainage pipe – yellow clay with red slip – overall diameter 100mm, found at a depth of 0.600m, 9.6m north of the mouth of Trench 4.

2.0 Planning Background

Planning application FUL/MAL/15/00665 was submitted to the Local Planning Authority (LPA). Essex County Council Heritage and Conservation (ECCHC), on behalf of the LPA requested that Archaeological Monitoring be undertaken in order to record any archaeological remains uncovered during the development work. The following condition was attached to the planning consent:

L1 Archaeological Assessment

No development including any site clearance or groundworks of any kind shall take place within the site until the applicant or their agents; the owner of the site or successors in title has submitted an archaeological assessment by an accredited archaeological consultant to establish the archaeological significance of the site. Such archaeological assessment shall be approved by the local planning authority and will inform the implementation of a programme of archaeological work. The development shall be carried out in a manner that accommodates such approved programme of archaeological work.

L2 Implementation of Archaeological Fieldwork Programme

No development including any site clearance or groundworks of any kind shall take place within the site until the applicant or their agents; the owner of the site or successors in title has secured the implementation of a programme of archaeological work from an accredited archaeological contractor in accordance with a written scheme of investigation which has been submitted to and approved in writing by the local planning authority. The development shall be carried out in a manner that accommodates the approved programme of archaeological work.

3.0 Schedule of Visits

An archaeologist suitably experienced attended the site (Zoe Schofield TOUCHSTONE Archaeology) and monitored the excavation works on 30th September 2015.

4.0 Aims and Objectives

4.1. The reason for the monitoring and recording, were to observe, excavate and record archaeological remains revealed by the ground works, to contribute to heritage knowledge of the area and ensure suitable specialist observation close to a potential archaeological site.

4.2. The ground works were to dig 8no service trenches for electrical cables to connect the existing Solar Panels to the new Solar Panels (Plates 1-5).

4.3. A full programme of proposed works by the contractor were made available to Touchstone Archaeology before the on-site monitoring took place.

4.4. Confidence Rating

No factors hindered the recognition of archaeological and deposits during the monitoring and recording exercise.

5.0 Archaeological and Geological Background

5.1. The underlying geology at the site according to the British Geological Survey map is Bedrock geology of London Clay Formation. Sedimentary Bedrock formed approximately 34 to 56 million years ago in the Palaeogene Period (BSG website 1: 50,000). The geology revealed on site was silty clay & sand topped by dark brown humic topsoil.

5.2. The application site consisted of an area adjacent to the Braxted Park Road, south of the River Blackwater and close to the villages of Rivenhall, Little Braxted and Great Braxted. The site itself is generally level at a height of about 18m aOD.

5.3. The site lies within an area of known archaeological potential associated with cropmarks (8330/TL841156) in the form of a large ring ditch with linear features and to the south of Broad Hill Farm (8391/TL846154) a rounded enclosure measuring approximately 16m in diameter with no visible entrances and to the west of Appleford Farm is the suggested line of a Roman Road. Post medieval is also represented with Appleford Bridge Cottage (38816/TL844157) and Appleford Bridge (8330/TL841156).

6.0 Methodology

6.1. The Monitoring was conducted in accordance with the Archaeological Specification compiled by ECC and it also complied with the Institute of Field Archaeologists' Standards and Guidance for Archaeological Monitoring (IfA: 1994, revised Oct 2008).

6.2. The works comprised the observation of all ground works, including the inspection of subsoil and natural deposits for archaeological features and finds.

6.3. The Monitoring was carried out in one phase according to the needs of the building contractors on 30th September 2015.

6.4. Excavation of the area was carried out by contractors using a 360-degree machine equipped with a toothless bucket (260mm) necessary to excavate the 8no trenches (Plates 1-4).

6.5. All excavation was carried out under the constant supervision of an experienced archaeologist.

6.6. Where possible the areas of excavation were subsequently hand-cleaned with the intention of revealing any observed features in plan and section.

6.7. If found archaeological features under threat were to be excavated to enable sufficient information about form, development date and stratigraphic relationships to be recorded without prejudice to more extensive investigations, should these prove to be necessary.

6.8. The archaeological monitoring was carried out in accordance with current IfA Standards and Guidance, (IfA: 2008), and methodology discussed with the Archaeological Officer KCC.

7.0 Results

No archaeological features were revealed and one section of undated land drainage was recovered. The subsoil encountered across the site sandy silty clay overlaid by topsoil. No archaeological features were revealed in the natural geology and no archaeological finds retrieved from the topsoil (Fig.5).

8.0 Finds

No buried archaeological features were located in the Archaeological Monitoring phase and one section of land drainage was retrieved.

Circular fluted drainage pipe – yellow clay with red slip – overall diameter 100mm, found at a depth of 0.600m, 9.6m north of the mouth of Trench 4.

9.0 Discussion

The development site is in an area of archaeological potential. Unfortunately there were no archaeological features or finds relating to the cropmarks. The only find was the circular fluted drainage pipe made from yellow clay with a red slip in a diameter of 100mm. It was found at a depth of 0.600m, 9.6m north of the mouth of Trench 4. The discovery of the field drainage was to be expected in a ploughed field that had been farmland for many years. It was not possible to date the field drainage pipe.

10.0 Conclusion

The Archaeological Monitoring has fulfilled the primary aims and objectives of the ECC Archaeological Specification. As far as it is known no buried archaeological features have been affected as a result of the development.

11.0 Acknowledgments

Touchstone Archaeology would like to thank Smart Planning Ltd for commissioning the project. Fieldwork was undertaken and report written by Zoe Schofield.



Zoe Schofield

References

HER data (ECC 2015)

IFA (1994 & 2008) Standards and Guidance for Archaeological Monitoring

ECC Archaeological Monitoring (2015)

Appendix 1

Essex County Council HER Summary Form

Site Name: Development site at land adjacent to Commodity House, Braxted Park Road, Little Braxted, Essex CM8 3EW

Touchstone Archaeology Site Code: LB15

Site Address: As above

Summary:

Touchstone Archaeology carried out Archaeological Monitoring on the development site above. The site has planning permission for a Solar Farm whereby Essex County Council Heritage and Conservation (ECCHC) requested that Archaeological Monitoring be undertaken to determine the possible impact of the development on any archaeological remains.

The Archaeological Monitoring consisted of one site visit which encountered no buried archaeological features or and one section of undated land drainage, which was to be expected on land that is farmed.

District/Unitary: Maldon District Council

Period(s): Undated

NGR (centre of site to ten figures) 84493 15604

Type of Archaeological work: Archaeological Monitoring

Date of recording: September 2015

Unit undertaking recording: Touchstone Archaeology

Geology: Underlying geology is London Clay Formation

Title and author of accompanying report: Schofield Z. (2015) Archaeological Monitoring at Land adjacent to Commodity House, Braxted Park Road, Little Braxted, Essex CM8 3EW

Summary of fieldwork results (begin with earliest period first, add NGRs where appropriate)

See above

Location of archive/finds: Touchstone Archaeology. The Ridings, White Elm Road, Danbury Essex CM3 4LR

Contact at Unit: Zoe Schofield

Date: 19/10/2015

Plates

Plate 2. Cutting of service Trench 1 (facing West)



Plate 3. Cutting of service Trench 2 (facing North)



Plate 4. Cutting of service Trench 3 (facing West)



Plate 5. Base of Trench



Plate 6. Land Drainage Pipe



Figure 1 OS Map 1993 1:2500

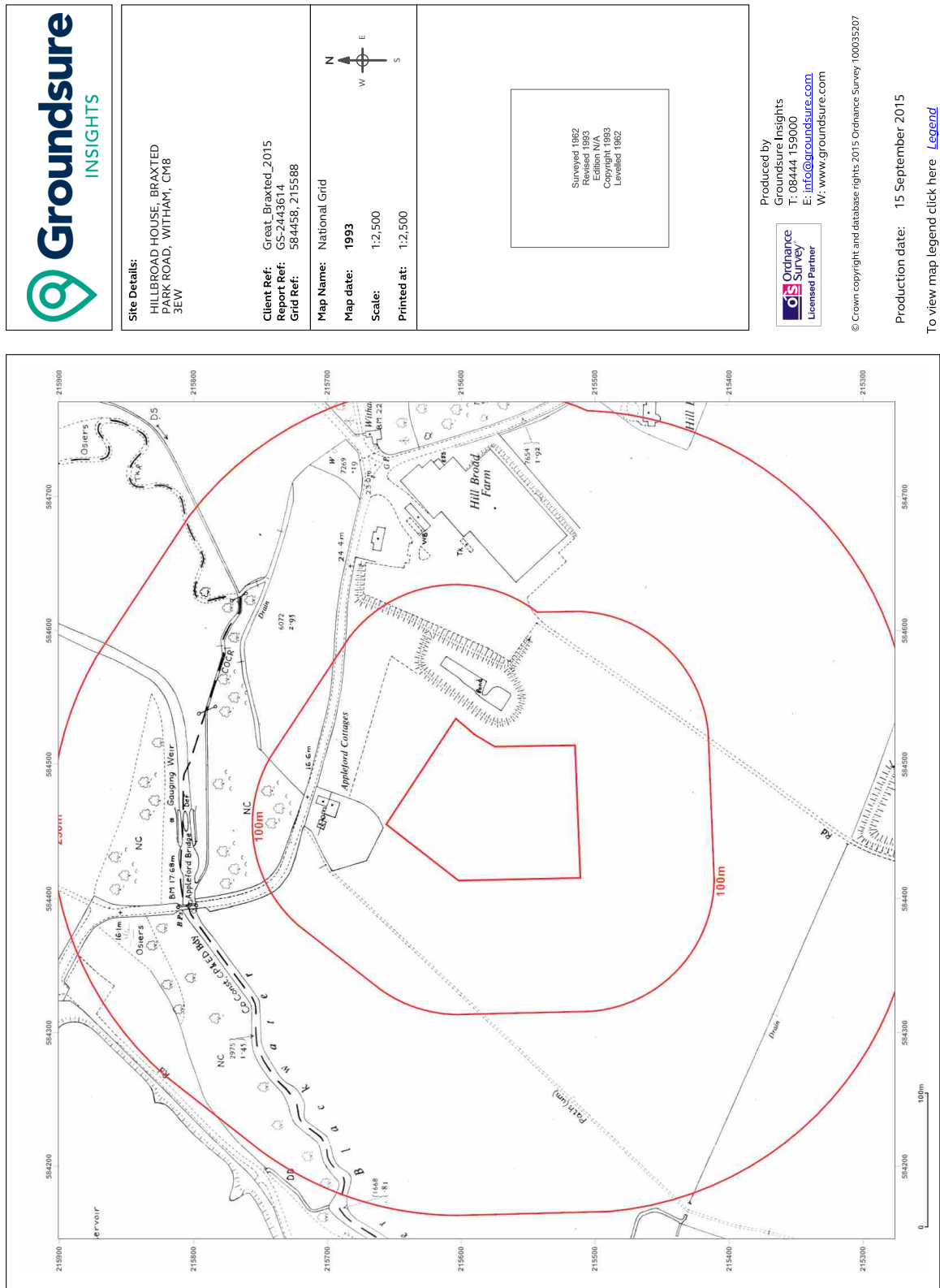
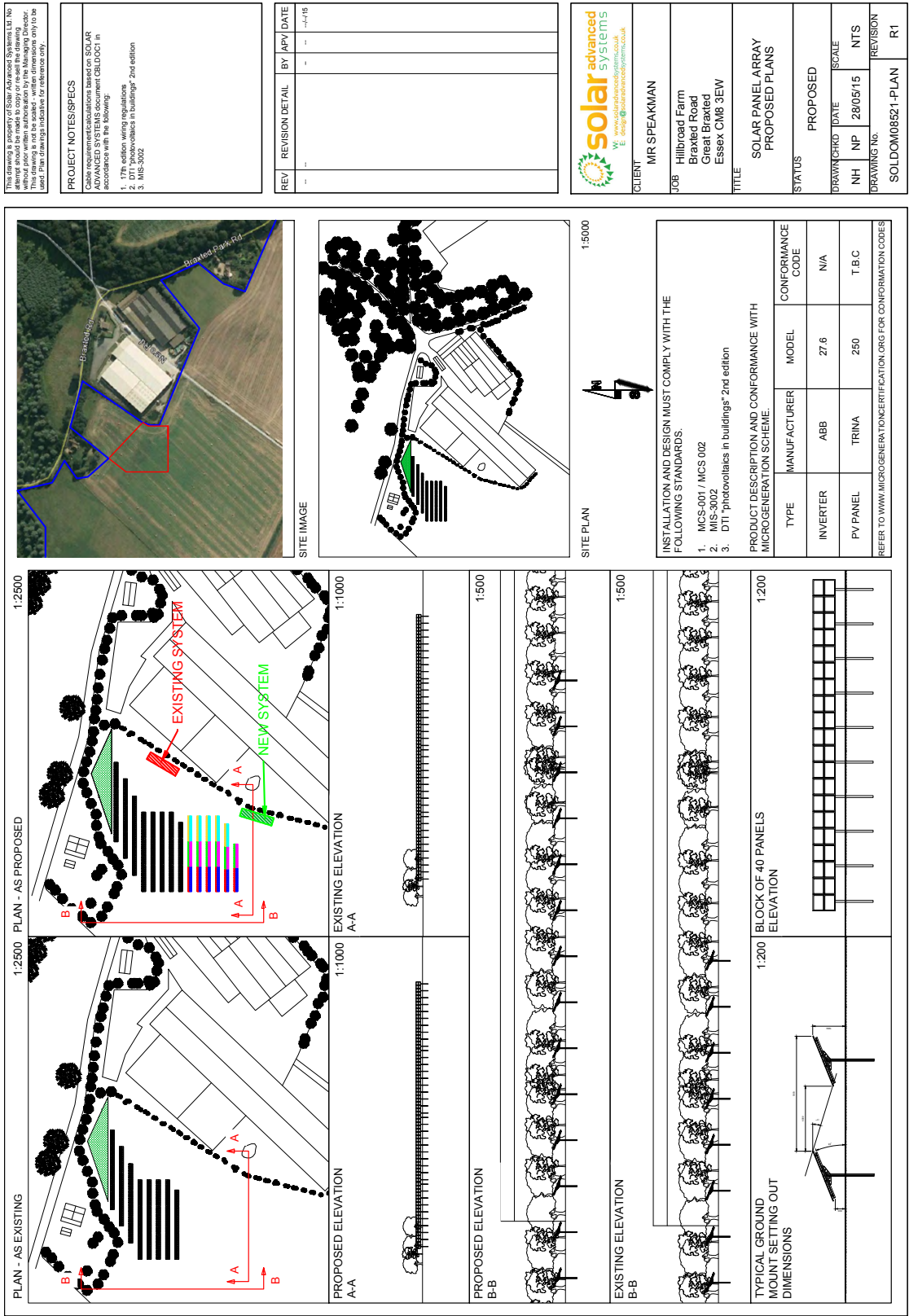
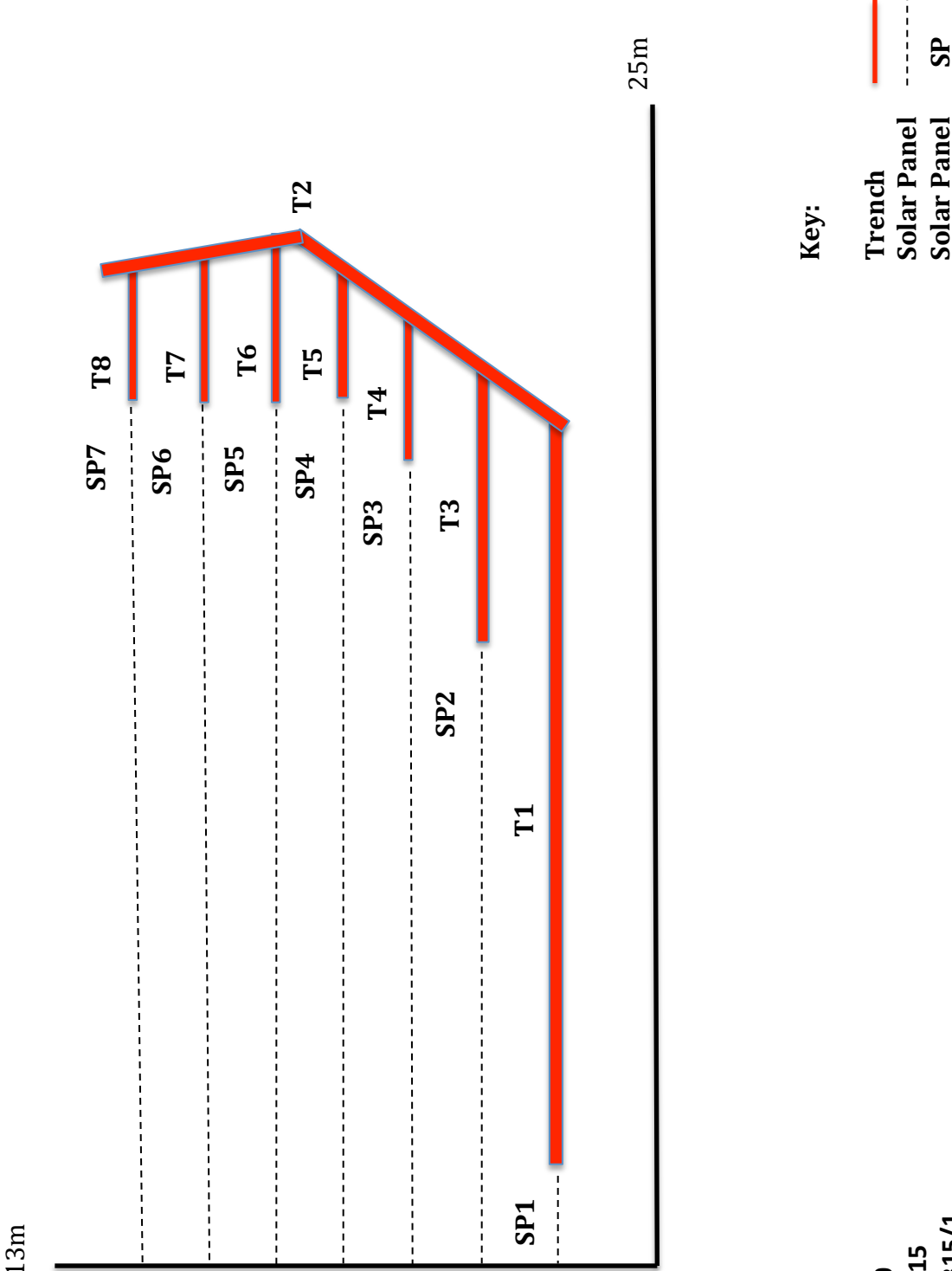


Figure 2 Plan of proposed development



Land adjacent to Commodity House, Little Braxted Road,
Little Braxted, Essex CM8 3EW

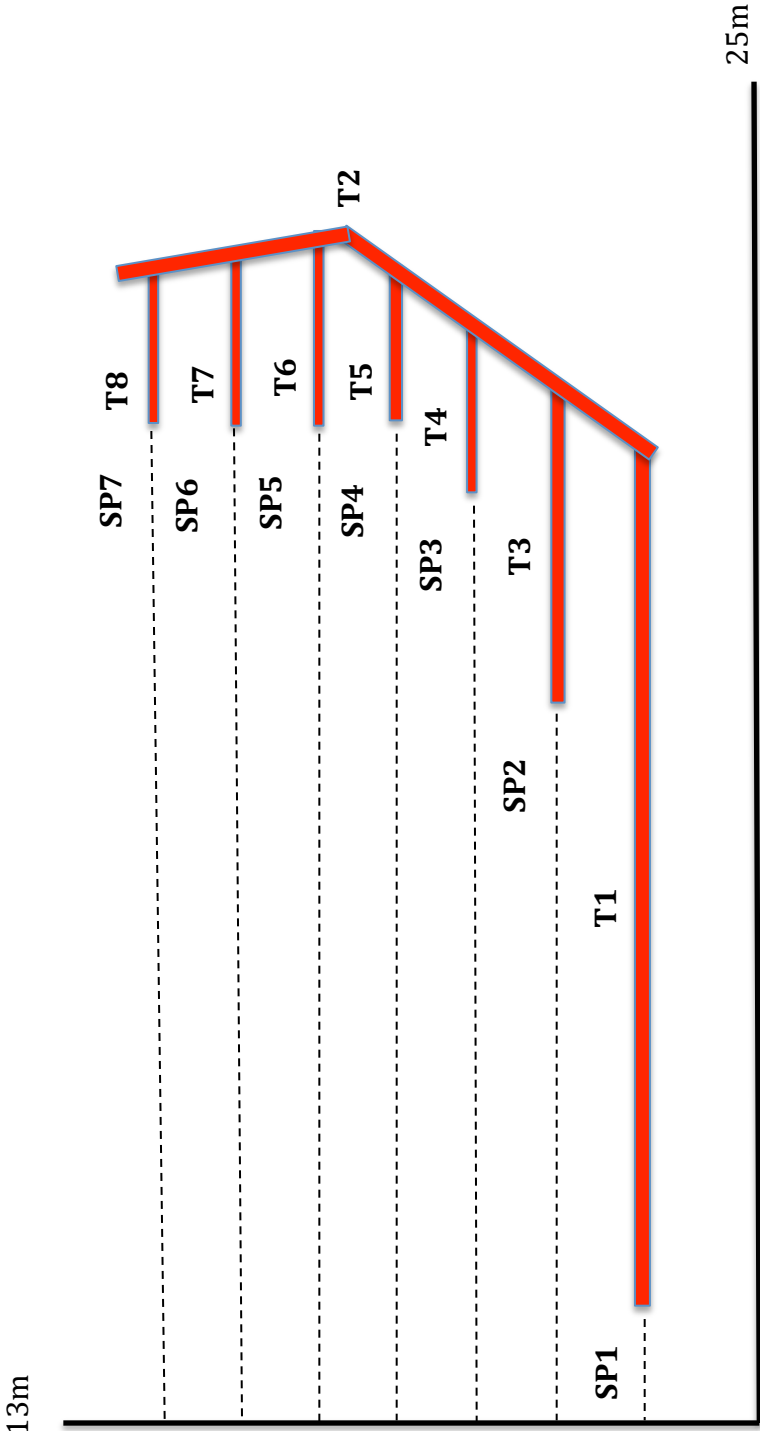
Plan of Trenches in relation to Solar Panels



Scale 1:100
Site No: LB15
Drawing LB15/1
Z Schofield

Land adjacent to Commodity House, Little Braxted Road,
Little Braxted, Essex CM8 3EW

Plan of Trenches in relation to Solar Panels



Key:

Trench

Solar Panel

Solar Panel

SP

Scale 1:100
Site No: LB15
Drawing LB15/1
Z Schofield

Site Name/Address: Land adjacent to Commodity House, Braxted Park Road, Little Braxted, Essex CM8 3EW	
Parish: Little Braxted	District: Maldon
NGR: 84493 15604	Site Code: LB15
Type of Work: Archaeological Monitoring	Site Director/Group: Zoe Schofield
Date of Work: 30 th September 2015	Size of Area Investigated: 6266sqm
Location of Finds/Curating Museum: Touchstone Archaeology, The Ridings, White Elm Road, Danbury, Essex CM3 4LR	Funding source: Owner
Further Seasons Anticipated? No	Related EHCR No's: 38816/8330/8391/8848/8451/38815
Final Report: LB15	OASIS number: 226309
Periods Represented: Undated, probable 20 th C	
SUMMARY OF FIELDWORK RESULTS: <p>8no service trenches were dug to a width of 0.260m and a depth of 0.700m, for electrical cabling to supply new Solar Farm. No archaeological features were discovered. One section of land drainage pipe was recovered at a depth of 0.600m in Trench 2, probable 20th C.</p> <p>A gravel pocket was also uncovered in Trench 2 and related to the construction of the Commodity House.</p> <p>See attached Plan of Trenches in relation to existing Solar Panels. (Trenches planned to Solar Panels as they were the only permanent fixture in a large field and the positioning of the Solar Panels is also documented in the Planning Consultants proposed drawing in the Final Report)</p>	
Previous Summaries/Reports: None	
Author of Summary: ZOE SCHOFIELD	Date of Summary: 19 th October 2015

OASIS DATA COLLECTION FORM: England

[List of Projects](#) | [Manage Projects](#) | [Search Projects](#) | [New project](#) | [Change your details](#) | [HER coverage](#) | [Change country](#) | [Log out](#)

Printable version

OASIS ID: zoeschof1-226309

Project details

Project name	Land adjacent to Commodity House, Braxted Park Road, Little Braxted Essex CM8 3EW
Short description of the project	Archaeological Monitoring of all trenching associated with Solar Farm Installation.
Project dates	Start: 30-09-2015 End: 30-09-2015
Previous/future work	Yes / No
Any associated project reference codes	LB15 - Sitecode
Any associated project reference codes	FUL/MAL/15/00665 - Planning Application No.
Any associated project reference codes	colem: 2015.97 - Museum accession ID
Any associated project reference codes	1603759 - NMR No.
Type of project	Recording project
Site status	Local Authority Designated Archaeological Area
Current Land use	Cultivated Land 2 - Operations to a depth less than 0.25m
Monument type	NONE None
Significant Finds	AGRICULTURE AND SUBSISTENCE Modern
Investigation type	"Watching Brief"
Prompt	Planning condition

Project location

Country	England
Site location	ESSEX MALDON LITTLE BRAXTED Land adjacent to Commodity House
Postcode	CM8 3EW
Study area	6266.32 Square metres
Site coordinates	TL 84493 15604 51.80807327194 0.676484143569 51 48 29 N 000 40 35 E Point
Height OD / Depth	Min: 18m Max: 18m

Project creators

Name of Organisation	Zoe Schofield
Project brief originator	Local Authority Archaeologist and/or Planning Authority/advisory body
Project design originator	Zoe Schofield
Project director/manager	Zoe Schofield
Project supervisor	Zoe Schofield
Type of sponsor/funding body	Landowner

Project archives	
Physical Archive recipient	Zoe Schofield
Physical Archive ID	LB15
Physical Contents	"Ceramics"
Digital Archive recipient	Zoe Schofield
Digital Archive ID	LB15
Digital Contents	"Ceramics"
Digital Media available	"Text"
Paper Archive recipient	Essex HER
Paper Archive ID	LB15
Paper Contents	"Ceramics"
Paper Media available	"Aerial Photograph","Context sheet","Drawing","Map","Photograph","Plan","Report","Section"

Project bibliography 1	
Publication type	Grey literature (unpublished document/manuscript)
Title	Archaeological Monitoring at Land adjacent to Commodity House, Braxted park Road, Little Braxted, Essex CM8 3EW
Author(s)/Editor(s)	Schofield Z
Other bibliographic details	LB15
Date	2015
Issuer or publisher	Schofield Z
Place of issue or publication	Website: www.touchstonearchaeology.com
Description	PDF Report comprising of descriptive text, maps, photography and drawings.
URL	www.touchstonearchaeology.com

Entered by	Mark Barratt (oasis@historicengland.org.uk)
Entered on	20 May 2016

