

BAPTISTE LAKE

Key Contacts

County of Athabasca 780-675-2273
Director Emergency Services
Ron Jackson 780-212-6789
Baptiste Lake Fire Chief
Rob Laackmann 780-675-4718
780-689-0966

Athabasca Fire Chief
Denis Mathieu 780-689-9024

LLB Fire Center 780-623-5388 (office)
Duty Officer 780-623-5245 (desk)

Utilities
Fortis 310-9473
Alta-Gas 1-866-222-2068

RCMP
Emergency/Search and Rescue
911
Athabasca 780-675-4252 (office)

Alberta Emergency Management Agency (AEMA) 1-866-618-2362

Fire Behavior Factors

Fuel: D1 with M1/M2 along the creeks and scattered O1; some C2 west of the lake
Topography: flat with a steep bank down to lake in places, some rolling hills to the west

Values at Risk

Critical Infrastructure: Grosmont Hall and Baptiste Lake Fire Hall
Special Values at Risk: None identified

Dangerous Goods: None Identified

Staging Areas

Grosmont Hall/Ball Field
Farm fields surrounding lake

Water Supply

Baptiste Lake—unlimited supply
Grosmont Truck Fill—10,000 gal @ 25gal/min, no back up power
South Baptiste Public Beach

Communications

Command (Mutual Aid Channel)
156.855 MHz Wide Band
Tactical (AFD)
TX 169.545 RX 168.855
Tactical (SRD)
Fire Line 36 151.070 MHz 88.5 Hz Tone
Tactical (SRD Heavy Equipment)
Fire Line 11 152.390 MHz Tone 100 Hz
Aircraft Monitoring
Fire Net 203 by XMA22 TX 157.770 MHz
RX 152.510 MHz 162.2 Hz Tone
Air Advisory
129.800 MHz

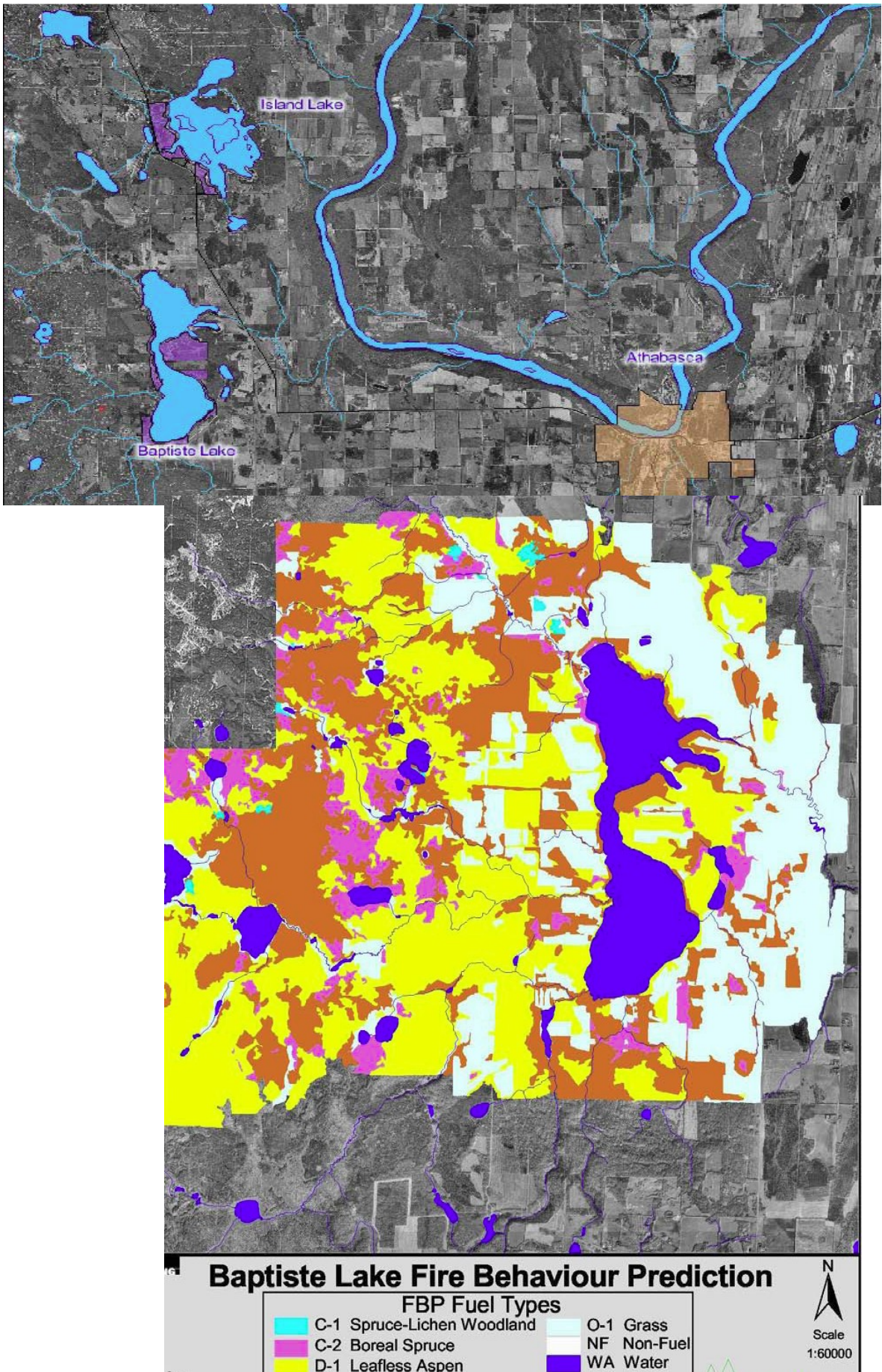
Fire Department Resources

Baptiste Lake Fire Department
1 Type 1 Engine
1 Type 1 Tender
15-21 Members

Athabasca Fire Department
1 Type 1 Engine
1 Type 1 Tender
1 Type 3 Engine
1 Rescue Unit/Pumper

Area Description

The summer villages surrounding Baptiste Lake are located about 12 km west of Athabasca, just off Highway 2. The communities consist of about 646 dwellings with the majority of them being summer residences.



Evacuation Protocol

SRD IC will advise the DO when a fire is threatening the Community; DO will advise the Municipal Disaster Services Authority. Alert status will be determined by the Evacuation Trigger Points.

- When a wildfire is discovered and initial attack has failed to contain the fire start within the primary containment lines, the IC will give a strategic evacuation notification
- If a wildfire occurs within the second containment line, or is immediately threatened, the IC may be required to do a tactical evacuation and give immediate notification
- If a wildfire approaches the community from a distance of greater than 10 kilometers, the Evacuation Alert will be based on local weather conditions and fire behavior

Evacuation Routes

- All roads within the sub-division can be used as evacuation routes. Specific routes will be designated by the local RCMP at the time.
- Highway 2 is the main evacuation route out of the area.

Emergency Assembly/ Safe Refuge Areas

- If required, temporary assembly and housing will be established in Athabasca

Responder Evacuation

- Responder evacuation will be determined by the Incident Commander

Escape Routes/Safety Zones

- Potential safety zones are identified on the attached map

Wildfire Operations

Primary Strategy

- Contain a wildfire threat on the east side of Highway 2 or on the west side of Baptiste Lake Road
- Fire Department’s primary role will be to patrol that portion of the sub-division that is under threat by airborne embers and extinguish any spot fire starts

Secondary Strategy

- If the fire is already inside this area, or jumps across, the secondary plan should be to protect structures closest to the fire as shown on the sprinkler plan map
- Should the fire originate from within the community, or breach the containment lines, the final stand will be made at the edge of each threatened sub-division
-

Sprinkler Deployment Plan

- 6 divisions; deploy in divisions threatened by wildfire
- First priority—structures in Division closest to the fire

