

**NITRO**  
SNOWBOARDS

***FOREVER SNOWBOARDING***

RENTAL CATALOG  
SEASON 2026 - 2027

# AUTHENTICITY

Rental is your business, and we take it seriously.

Nitro is an authentic snowboard company, and our goal is to make snowboarders happy around the globe.

Our rental products are easy to use, to handle and to maintain, and specifically designed to meet your needs. Durable, smart materials and constructions keep the value of your investment high, season after season. At the same time, our rentals are offering the look and feel only a real snowboard brand can offer.

Snowboarding is at our core, and we'll always stay committed to the sport and the people who make it what it is.



Tommy Delago

# COLOR CODES

FOR EASY BOOT/BINDING SIZE MATCHING



## BLUE LARGE SIZES

MP 28.0 - 32.0 / US Men's 10 - 14  
EU 42 2/3 - 48 / UK 9 - 13



## ORANGE SMALL SIZES

MP 23.0 - 27.5 / US Men's 5 - 9.5  
US Women's 6 - 10.5 / EU 36 - 42 / UK 4 - 8.5



## GREEN YOUTH SIZES

MP 21.0 - 24.5 / US 3 - 6.5  
US: 4 - 7.5 / EU 33 1/3 - 38 / UK 2 - 5.5



## WHITE KIDS SIZES

MP 17.5 - 20.5 / US Kid's 12 - 2.5  
EU 28 2/3 - 32 2/3 / UK Kid's 11 - 1.5





# SNOWBOARDS - RENTAL SPECIFIC FEATURES

While it is our goal to provide your customer with an authentic Nitro snowboarding experience, our rental snowboards feature a set of construction details and specifications especially designed to improve durability and handling of your rental fleet:

## NEW MAINTENANCE-FRIENDLY BLACK RUNNING BASE

Our new black rental base material now prevents your boards from turning grey too quickly. With proper maintenance, your bases will stay fresh and fast for a long time.

### FEATURE EVOLUTION FOR 26/27



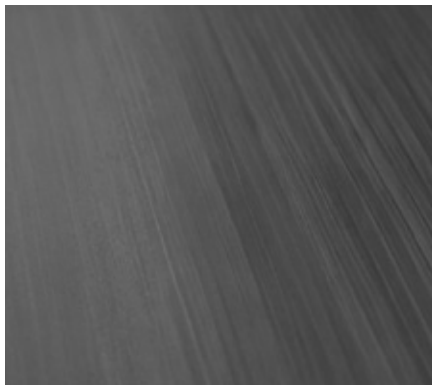
## INTEGRATED BARCODE LABEL

For easier inventory management, our boards carry an integrated, easy-access barcode label under the topsheet. Compatible with your existing scanner and software.



## SCRATCH-FREE, SELF-HEALING TOPSHEET

Our exclusive soft-touch topsheet material has proven to be close to indestructible over the years. Its scratch-free and self-healing surface will make your rental fleet look fresh and clean day after day, season after season.



## RAILKILLER EDGE

Originally designed for rail riding, this exclusive Nitro innovation has proven highly effective for rental boards:

- 200% More Impact Resistance
- More Durability and Strength
- Allows more Edge-Tuning Cycles

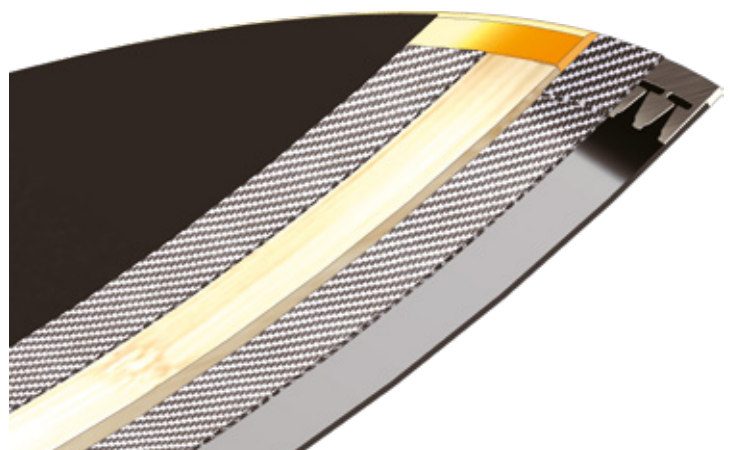


## "SHORT-CUT" TOP GLASS

We simply don't like the look and extra weight of the big black molded plastic "bumpers" used by many other brands, but at the same time, tip and tail protection against impact damage is very important.

So, we designed a specific fiberglass configuration for all our rental boards, using custom die cut top fiberglass sheets with no exposure to the outside edge of the board:

- Direct Contact of Topsheet and Tip Insert
- Better Bonding Between Layers
- Less Risk of delamination and water damage





## Pricing and Discounts

Product	Size	\$0-\$7,999 30 Day Terms	\$8,000-\$49,999 90 Day Terms	\$50,000 and above 2/15/2027 Terms
<b>BOARDS</b>		<b>Full WS</b>	<b>10% off</b>	<b>15% off</b>
2027 TEAM RENTAL SNOWBOARD	152mw, 155mw, 157w, 159w, 162w	\$372.00	\$334.80	\$316.20
2027 MAGNUM RENTAL	163w, 167w, 171w	\$390.00	\$351.00	\$331.50
2027 PHASE RENTAL	152mw, 155mw, 159mw, 162w	\$312.00	\$280.80	\$265.20
2027 CHEAP TRILLS RENTAL	148, 152, 155, 157, 155w, 157w, 159w, 162w	\$276.00	\$248.40	\$234.60
2027 PRIME CHROMA RENTAL - 26/27 and 27/28	142, 146, 149, 152mw, 155mw, 158mw, 153w, 156w, 160w, 164w	\$240.00	\$216.00	\$204.00
2027 PRIME RAW RENTAL - 25/26 and 26/27	149mw, 152mw, 155mw, 158mw, 156w, 160w, 164w	\$240.00	\$216.00	\$204.00
2027 FATE RENTAL	144, 147, 150, 153	\$360.00	\$324.00	\$306.00
2027 LECTRA LEAF RENTAL - 26/27 and 27/28	138, 142, 146, 149, 152	\$240.00	\$216.00	\$204.00
2027 LECTRA ABSTRACT - 25/26 and 26/27	138, 142, 146, 149, 152	\$240.00	\$216.00	\$204.00
2027 MINI THRILLS RENTAL	138, 143mw, 148mw	\$210.00	\$189.00	\$178.50
2027 RIPPER KIDS RENTAL - Carry Over	86, 96, 106, 116, 121, 126	\$138.00	\$124.20	\$117.30
2027 RIPPER YOUTH RENTAL - Carry Over	132, 137	\$174.00	\$156.60	\$147.90
<b>BINDINGS</b>		<b>Full WS</b>	<b>10% off</b>	<b>15% off</b>
2027 TEAM PRO RENTAL (either style rental disc)	S/M, M/L	\$200.00	\$180.00	\$170.00
2027 RENTAL YOUTH (either style rental disc)	S	\$140.00	\$126.00	\$119.00
2027 CHARGER MICRO	XS	\$78.00	\$70.20	\$66.30
<b>BOOTS</b>		<b>Full WS</b>	<b>10% off</b>	<b>15% off</b>
2027 Team Rental TLS	5 (23.0)-14(32.0)	\$230.00	\$207.00	\$195.50
2027 Team Rental BOA	5 (23.0)-14(32.0)	\$240.00	\$216.00	\$204.00
2027 Team Rental Dual Boa	5 (23.0)-14(32.0)	\$260.00	\$234.00	\$221.00
2027 Venture Rental BOA	5 (23.0)-14(32.0)	\$180.00	\$162.00	\$153.00
2027 ACCESS BOA YOUTH	3 (21)-6.5(24.5)	\$135.00	\$121.50	\$114.75
2027 ACCESS BOA KIDS	12 (17.5)-2.5(20.5)	\$130.00	\$117.00	\$110.50

TEAM RENTAL

THE #1 ALL-MOUNTAIN RIDE FOR THE PASSIONATE ONES!

MEN'S Rental Snowboard  
USD \$372



- NITRO'S MOST ICONIC BOARD MODEL
- BIGGEST SPECTRUM OF USAGE
- INTERMEDIATE TO ADVANCED

SEASON 2026-27 PRODUCT IMPROVEMENT

- - NEW MID-WIDE FOR EVEN BROADER USE
- NEW 157 WIDE
- NEW MAINTENANCE-FRIENDLY BLACK RUNNING BASE

RENTAL SPECIFIC FEATURES

- SCRATCH-FREE, SELF-HEALING TOPSHEET
- INTEGRATED BARCODE LABEL
- "SHORT-CUT" TOP GLASS
- RAILKILLER EDGE
- NEW MAINTENANCE-FRIENDLY BLACK RUNNING BASE

CHARACTERISTICS



- Shape: **Directional Twin** - The best of both worlds
- Camber: **True** - Full control and pop
- Profile: **Reflex Core Profile** - Better torsional control
- Width: **Mid-Wide** - Exactly enough platform for most boot sizes
- Width: **Wide** - All the room you need without edge-to-edge lag
- Sidecut: **Dual Degressive** - Smooth and forgiving



TECHNICAL SPECIFICATIONS

Sizes	Running Length	Nose / Tail width	Waist width	Sidecut	Set-back	Rider weight
157mw	1170	299 / 299	256	11.3/7.3/11.3	-15	60-80
155mw	1160	297 / 297	254	11.0/7.2/11.0	-15	55-75
152mw	1140	293 / 293	250	10.7/6.8/10.7	-15	50-70
162w	1210	311 / 311	270	12.8/8.1/12.8	-15	70+
159w	1180	309 / 309	266	11.7/7.3/11.7	-15	65-85
157w	1170	307 / 307	264	11.3/7.3/11.3	-15	60-80
(cm)	(mm)	(mm)	(mm)	(mm)	(mm)	(Kg)

RESPONSIBILITY



MADE WITH 100% SOLAR POWER



FOREVER SNOWBOARDING

# MAGNUM RENTAL

BIGGER ALL-MOUNTAIN PERFORMANCE!

MEN'S Rental Snowboard  
USD \$390

- NITRO'S MOST FAMOUS WIDE SNOWBOARD
- PERFECT ALL-MOUNTAIN SHAPE
- INTERMEDIATE TO ADVANCED
- BOOT SIZE MP29/US11 AND UP

### SEASON 2026-27 PRODUCT IMPROVEMENT

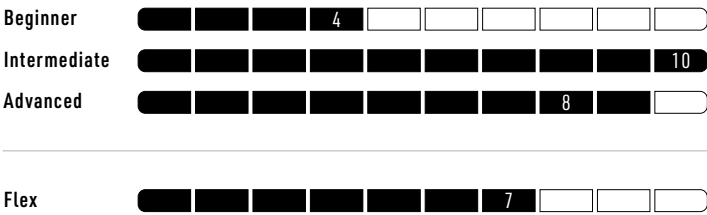


- NEW 163 SIZE
- NEW MAINTENANCE-FRIENDLY BLACK RUNNING BASE

### RENTAL SPECIFIC FEATURES

- SCRATCH-FREE, SELF-HEALING TOPSHEET
- INTEGRATED BARCODE LABEL
- "SHORT-CUT" TOP GLASS
- RAILKILLER EDGE
- NEW MAINTENANCE-FRIENDLY BLACK RUNNING BASE

### CHARACTERISTICS



- Shape: **Directional** - The most versatile all-mountain shape
- Camber: **Cam-Out** - Fun, responsive and forgiving
- Profile: **Standard Core Profile** - Even flex and control
- Width: **Wide** - All the room you need without edge-to-edge lag
- Sidecut: **Dual Degressive** - Smooth and forgiving
- Plus: **Power Pods** - Step up your carving game



### TECHNICAL SPECIFICATIONS

Sizes	Running Length	Nose / Tail width	Waist width	Sidecut	Set-back	Rider weight
171w	1180	326 / 325	274	8.0 / 4.8	-15	75+
167w	1150	324 / 323	272	7.5 / 4.8 / 7.5	-15	75+
163w	1120	321 / 320	270	7.0 / 4.1 / 7.0	-15	75+
(cm)	(mm)	(mm)	(mm)	(mm)	(mm)	(Kg)

NITRO

RESPONSIBILITY



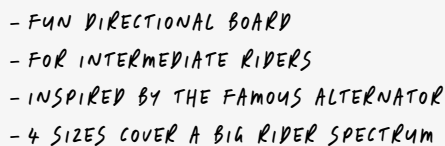
MADE WITH 100% SOLAR POWER



www.fsc.org  
FSC®N004350

## THE FUN DIRECTIONAL ADVENTURE SEEKER

**USD \$312**



## SEASON 2026-27 PRODUCT IMPROVEMENT

- NEW MAINTENANCE-FRIENDLY BLACK RUNNING BASE

## RENTAL SPECIFIC FEATURES

- SCRATCH-FREE, SELF-HEALING TOPSHEET
- INTEGRATED BARCODE LABEL
- "SHORT-CUT" TOP GLASS
- RAILKILLER EDGE
- NEW MAINTENANCE-FRIENDLY BLACK RUNNING BASE

## CHARACTERISTICS

Beginner ☐ ☐ ☐ ☐ ☒ 6 ☐ ☐ ☐ ☐

Intermediate  10

Advanced 4

Flex 

					6				
--	--	--	--	--	---	--	--	--	--

Shape: **Directional** – The most versatile all-mountain shape  
Camber: **Cam-Out** – Fun, responsive and forgiving  
Profile: **Standard Core Profile** – Even flex and control  
Width: **Mid-Wide** – Exactly enough platform for most boot sizes  
Width: **Wide** – All the room you need without edge-to-edge lag  
Sidecut: **Dual Degressive** – Smooth and forgiving



## TECHNICAL SPECIFICATIONS

Sizes	Running Length	Nose / Tail width	Waist width	Sidicut	Set-back	Rider weight
<b>162w</b>	1150	312 / 312	269	11.0 / 7.2 / 11.0	-15	70+
<b>159mw</b>	1120	300 / 300	257	10.3 / 6.9 / 10.3	-15	65+
<b>155mw</b>	1090	298 / 298	255	9.9 / 6.5 / 9.9	-15	55-75
<b>152mw</b>	1060	296 / 296	253	9.4 / 6.1 / 9.4	-15	50-70
(cm)	(mm)	(mm)	(mm)	(mm)	(mm)	(Kg)

## RESPONSIBILITY



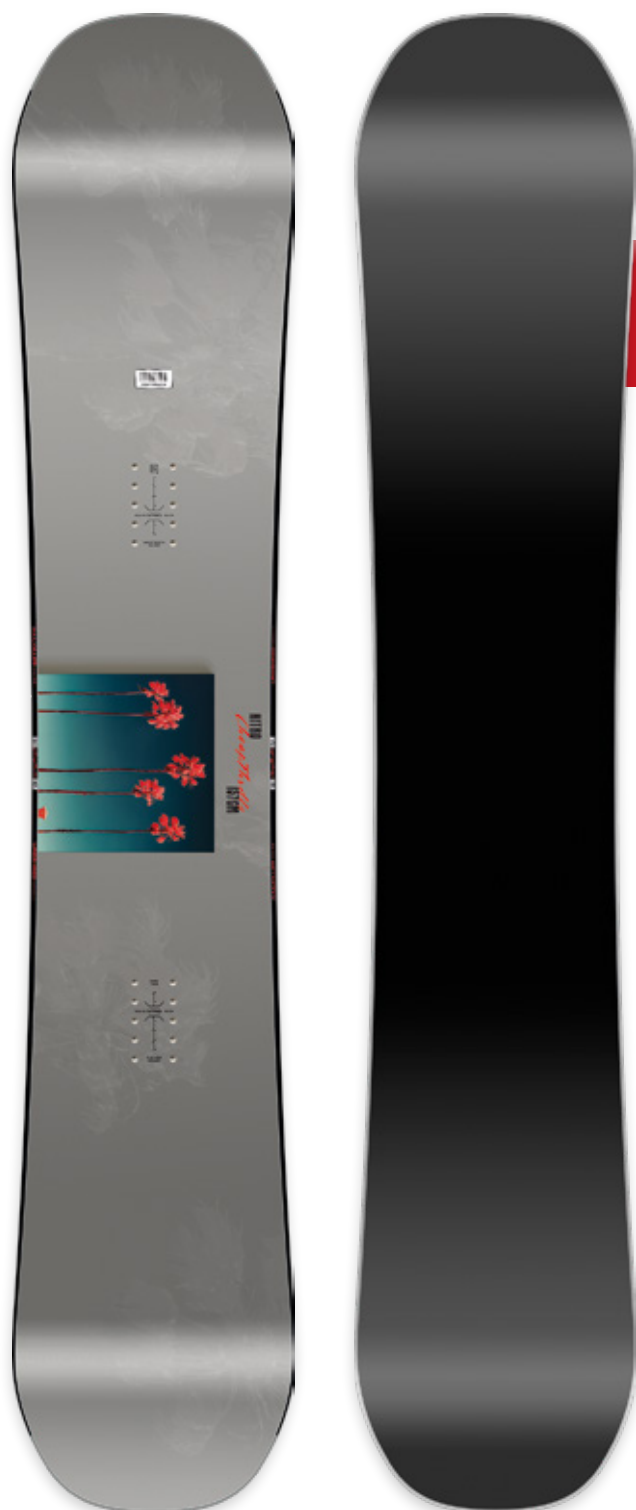
MADE WITH  
100% SOLAR  
POWER





THE PERFECT TWIN SHAPE FOR VERSATILITY

**USD \$276**



Sizes	Running Length	Nose / Tail width	Waist width	Sidicut	Set-back	Rider weight
<b>157</b>	1100	295 / 295	254	8.8	0	65+
<b>155</b>	1080	293 / 293	252	8.6	0	60-80
<b>152</b>	1070	289 / 289	248	8.3	0	55-75
<b>148</b>	1040	287 / 287	247	8.0	0	50-70
<b>162<sub>w</sub></b>	1130	315 / 315	272	8.8	0	75+
<b>159<sub>w</sub></b>	1100	309 / 309	267	8.5	0	70+
<b>157<sub>w</sub></b>	1100	305 / 305	264	8.8	0	65+
<b>155<sub>w</sub></b>	1080	303 / 303	262	8.6	0	60-80
(cm)	(mm)	(mm)	(mm)	(mm)	(mm)	(Kg)



MADE WITH  
100% SOLAR  
POWER



# PRIME CHROMA RENTAL

THE DIRECTIONAL TWIN BUILT TO LAST & GET YOU HOOKED!

MEN'S Rental Snowboard  
USD \$240

LATE ORDER OPTION



- MOST POPULAR-SELLING NITRO RENTAL BOARD
- ALL-MOUNTAIN DIRECTIONAL SHAPE
- BEGINNER TO INTERMEDIATE
- 2 GRAPHICS OPTIONS

#### SEASON 2026-27 PRODUCT IMPROVEMENT

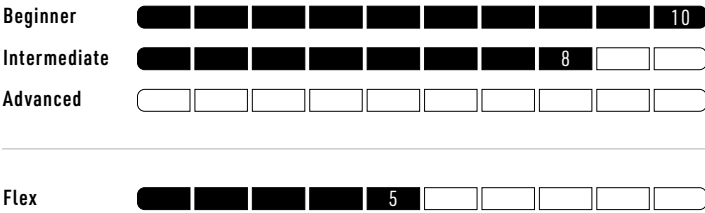


- 3 NEW SIZES: 142, 146, 153W
- NEW MAINTENANCE-FRIENDLY BLACK RUNNING BASE

#### RENTAL SPECIFIC FEATURES

- SCRATCH-FREE, SELF-HEALING TOPSHEET
- INTEGRATED BARCODE LABEL
- "SHORT-CUT" TOP GLASS
- RAILKILLER EDGE
- NEW MAINTENANCE-FRIENDLY BLACK RUNNING BASE

#### CHARACTERISTICS



- Shape: **Directional Twin** - The best of both worlds
- Camber: **Cam-Out** - Fun, responsive and forgiving
- Profile: **Standard Core Profile** - Even flex and control
- Width: **Standard** - Quick response and edge control
- Width: **Mid-Wide** - Exactly enough platform for most boot sizes
- Width: **Wide** - All the room you need without edge-to-edge lag
- Sidecut: **Radial** - Reliable and predictable



#### TECHNICAL SPECIFICATIONS

Sizes	Running Length	Nose / Tail width	Waist width	Sidecut	Set-back	Rider weight
158mw	1090	302 / 302	256	7.8	-15	65-85
155mw	1060	300 / 300	254	7.4	-15	55-75
152mw	1040	296 / 296	250	7.2	-15	50-70
149	1020	286 / 286	239	6.8	-15	50-70
146	990	280 / 280	234	6.5	-15	45-65
142	960	276 / 276	230	6.2	-15	-60
164w	1150	318 / 318	272	8.2	-15	70+
160w	1120	316 / 316	270	7.8	-15	65-85
156w	1070	312 / 312	266	7.4	-15	60-80
153w	1040	306 / 306	260	7.2	-15	50-70
(cm)	(mm)	(mm)	(mm)	(mm)	(mm)	(Kg)

RESPONSIBILITY



MADE WITH 100% SOLAR POWER



FOREVER SNOWBOARDING

Snowboards | 9

# PRIME RAW RENTAL

THE DIRECTIONAL TWIN BUILT TO LAST & GET YOU HOOKED!

MEN'S Rental Snowboard  
USD \$240

- BEST-SELLING NITRO RENTAL BOARD
- ALL-MOUNTAIN DIRECTIONAL SHAPE
- BEGINNER TO INTERMEDIATE
- 2 GRAPHICS OPTIONS

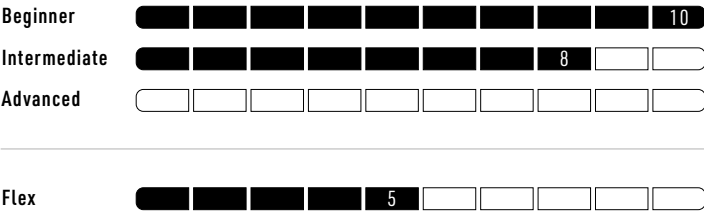
### SEASON 2026-27 PRODUCT IMPROVEMENT

- NEW MAINTENANCE-FRIENDLY BLACK RUNNING BASE

### RENTAL SPECIFIC FEATURES

- SCRATCH-FREE, SELF-HEALING TOPSHEET
- INTEGRATED BARCODE LABEL
- "SHORT-CUT" TOP GLASS
- RAILKILLER EDGE
- NEW MAINTENANCE-FRIENDLY BLACK RUNNING BASE

### CHARACTERISTICS



- Shape: Directional Twin - The best of both worlds
- Camber: Cam-Out - Fun, responsive and forgiving
- Profile: Standard Core Profile - Even flex and control
- Width: Standard - Quick response and edge control
- Width: Mid-Wide - Exactly enough platform for most boot sizes
- Width: Wide - All the room you need without edge-to-edge lag
- Sidecut: Radial - Reliable and predictable



### TECHNICAL SPECIFICATIONS

Sizes	Running Length	Nose / Tail width	Waist width	Sidecut	Set-back	Rider weight
158mw	1090	302 / 302	256	7.8	-15	65-85
155mw	1060	300 / 300	254	7.4	-15	55-75
152mw	1040	296 / 296	250	7.2	-15	50-70
149mw	1020	286 / 286	239	6.8	-15	50-70
164w	1150	318 / 318	272	8.2	-15	70+
160w	1120	316 / 316	270	7.8	-15	65-85
156w	1070	312 / 312	266	7.4	-15	60-80
(cm)	(mm)	(mm)	(mm)	(mm)	(mm)	(Kg)

RESPONSIBILITY



MADE WITH 100% SOLAR POWER



- NITRO'S MOST ICONIC WOMEN'S BOARD
- BIGGEST SPECTRUM OF USAGE
- INTERMEDIATE TO ADVANCED

SEASON 2026-27 PRODUCT IMPROVEMENT



- NEW MODEL IN 4 SIZES
- NEW MAINTENANCE-FRIENDLY BLACK RUNNING BASE

RENTAL SPECIFIC FEATURES

- SCRATCH-FREE, SELF-HEALING TOPSHEET
- INTEGRATED BARCODE LABEL
- "SHORT-CUT" TOP GLASS
- RAILKILLER EDGE
- NEW MAINTENANCE-FRIENDLY BLACK RUNNING BASE

CHARACTERISTICS

Beginner

5

Intermediate

10

Advanced

5

Flex

5

- Shape: Directional Twin - The best of both worlds
- Camber: Cam-Out - Fun, responsive and forgiving
- Profile: Reflex Core Profile - Better torsional control
- Width: Standard - Quick response and edge control
- Sidecut: Dual Degressive - Smooth and forgiving



TECHNICAL SPECIFICATIONS

Sizes	Running Length	Nose / Tail width	Waist width	Sidecut	Set-back	Rider weight
153	1150	290 / 290	242	8.0 / 7.0 / 8.0	-15	55+
150	1120	288 / 288	241	7.8 / 6.8 / 7.8	-15	45-65
147	1090	286 / 286	239	7.6 / 6.4 / 7.6	-15	-65
144	1060	282 / 282	236	7.4 / 6.1 / 7.4	-15	-65
(cm)	(mm)	(mm)	(mm)	(mm)	(mm)	(Kg)





THIS FUN DIRECTIONAL TWIN IS BUILT TO LAST

**USD \$240**



Sizes	Running Length	Nose / Tail width	Waist width	Sidcut	Set-back	Rider weight
<b>152</b>	1040	292 / 292	246	7.2	-15	50-70
<b>149</b>	1020	286 / 286	239	6.8	-15	50-70
<b>146</b>	990	280 / 280	234	6.5	-15	45-65
<b>142</b>	960	276 / 276	230	6.2	-15	-60
<b>138</b>	940	272 / 272	227	6.0	-10	-45
(cm)	(mm)	(mm)	(mm)	(mm)	(mm)	(Kg)

THIS FUN DIRECTIONAL TWIN IS BUILT TO LAST

**USD \$240**

## LATE ORDER OPTION

- BEST-SELLING WOMEN'S NITRO MODEL
- ALL-MOUNTAIN DIRECTIONAL SHAPE
- BEGINNER TO INTERMEDIATE
- 2 GRAPHICS OPTIONS

## SEASON 2026-27 PRODUCT IMPROVEMENT

- NEW MAINTENANCE-FRIENDLY BLACK RUNNING BASE

## RENTAL SPECIFIC FEATURES

- SCRATCH-FREE, SELF-HEALING TOPSHEET
- INTEGRATED BARCODE LABEL
- "SHORT-CUT" TOP GLASS
- RAILKILLER EDGE
- NEW MAINTENANCE-FRIENDLY BLACK RUNNING BASE

## CHARACTERISTICS

Beginner  10

**Intermediate**

**Advanced**

Flex 

			4						
--	--	--	---	--	--	--	--	--	--

Shape: **Directional Twin** - The best of both worlds

**Camber:** **Cam-Out** - Fun, responsive and forgiving

Profile: **Standard Core Profile** – Even flex and control

Width: **Progressive** - Perfect length-to-width match

Sidecut: **Radial** - Reliable and predictable



## TECHNICAL SPECIFICATIONS

Sizes	Running Length	Nose / Tail width	Waist width	Sidecut	Set-back	Rider weight
<b>152</b>	1040	292 / 292	246	7.2	-15	50-70
<b>149</b>	1020	286 / 286	239	6.8	-15	50-70
<b>146</b>	990	280 / 280	234	6.5	-15	45-65
<b>142</b>	960	276 / 276	230	6.2	-15	-60
<b>138</b>	940	272 / 272	227	6.0	-10	-45
(cm)	(mm)	(mm)	(mm)	(mm)	(mm)	(Kg)

## RESPONSIBILITY



MADE WITH  
100% SOLAR  
POWER

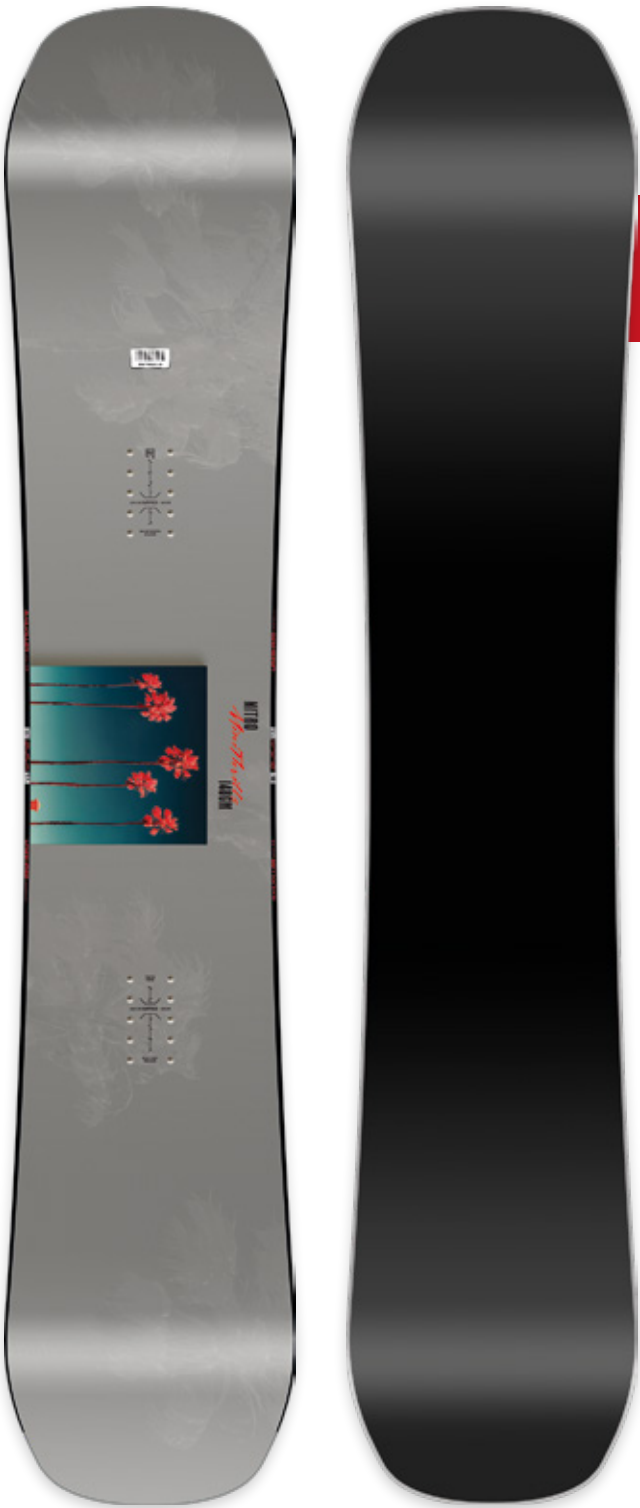


# MINI THRILLS RENTAL

THE PERFECT TWIN SHAPE FOR YOUNGER SHREDDERS

YOUTH Rental Snowboard

USD \$210



- VERSATILE YOUTH TWIN SHAPE
- BEGINNER TO ADVANCED
- RESORT OR PARK RIDING
- DUCK FOOT MOUNTING OPTION



### SEASON 2026-27 PRODUCT IMPROVEMENT

- NEW MAINTENANCE-FRIENDLY BLACK RUNNING BASE

### RENTAL SPECIFIC FEATURES

- SCRATCH-FREE, SELF-HEALING TOPSHEET
- INTEGRATED BARCODE LABEL
- "SHORT-CUT" TOP GLASS
- NEW MAINTENANCE-FRIENDLY BLACK RUNNING BASE

### CHARACTERISTICS

Beginner

Intermediate

Advanced

8

10

8

Flex

2

- Shape:
- Twin - For park riding or duck foot mounting
- Rocker:
- Flat-Out - Float and forgiveness
- Profile:
- Standard Core Profile - Even flex and control
- Width:
- Progressive - Perfect length-to-width match
- Sidecut:
- Radial - Reliable and predictable



### TECHNICAL SPECIFICATIONS

Sizes	Running Length	Nose / Tail width	Waist width	Sidecut	Set-back	Rider weight
148mw	1000	291	252	8.5	0	45-65
143mw	960	281	242	8.0	0	40-60
138	920	273	234	7.5	0	-45
(cm)	(mm)	(mm)	(mm)	(mm)	(mm)	(Kg)

### RESPONSIBILITY



MADE WITH 100% SOLAR POWER



# RIPPER RENTAL

BUILT SPECIFICALLY TO HELP KIDS LEARN FASTER!

YOUTH Rental Snowboard  
USD \$138-\$174

- VERSATILE KIDS/YOUTH TWIN SHAPE
- BEGINNER TO ADVANCED
- SOFT FLEX
- 8 SIZES
- DUCK FOOT MOUNTING OPTION

### SEASON 2026-27 PRODUCT IMPROVEMENT

- NEW MAINTENANCE-FRIENDLY BLACK RUNNING BASE

### RENTAL SPECIFIC FEATURES

- SCRATCH-FREE, SELF-HEALING TOPSHEET
- INTEGRATED BARCODE LABEL
- "SHORT-CUT" TOP GLASS
- NEW MAINTENANCE-FRIENDLY BLACK RUNNING BASE

### CHARACTERISTICS

Beginner	<div><div></div><div></div><div></div><div></div><div></div><div></div><div></div><div></div><div></div><div></div></div>	10
Intermediate	<div><div></div><div></div><div></div><div></div><div></div><div></div><div></div><div></div><div></div><div></div></div>	10
Advanced	<div><div></div><div></div><div></div><div></div><div></div><div></div><div></div><div></div><div></div><div></div></div>	4

Flex Youth	<div><div></div><div></div><div></div><div></div><div></div><div></div><div></div><div></div><div></div><div></div></div>	2
Flex Kids	<div><div></div><div></div><div></div><div></div><div></div><div></div><div></div><div></div><div></div><div></div></div>	1

- Shape: **Twin** - For park riding or duck foot mounting  
Rocker: **Flat-Out** - Float and forgiveness  
Width: **Standard** - Quick response and edge control  
Sidecut: **Dual Degressive** - Smooth and forgiving  
Plus: **Softride (86-126)** - Soft flex for mini boards



### TECHNICAL SPECIFICATIONS

Sizes	Running Length	Nose / Tail width	Waist width	Sidecut	Set-back	Rider weight	
137	1000	271 / 271	232	7.1	0	35-55	Youth
132	960	261 / 261	224	7.0	0	30-50	
126	900	251 / 251	218	6.9	0	25-45	Kids
121	850	246 / 246	216	6.9	0	20-40	
116	800	235 / 235	208	6.8	0	20-40	
106	700	221 / 221	200	6.7	0	-35	
96	600	207 / 207	190	6.5	0	-30	
86	500	193 / 193	180	6.0	0	-25	
(cm)	(mm)	(mm)	(mm)	(mm)	(mm)	(Kg)	

RESPONSIBILITY



MADE WITH  
100% SOLAR  
POWER



FOREVER SNOWBOARDING

Snowboards | 15



# BINDINGS - RENTAL SPECIFIC FEATURES

While it is our goal to provide your customer with the authentic Nitro snowboarding experience, our rental bindings feature a set of construction details and specifications especially designed to improve durability and handling of your rental fleet:

## SIZE INDICATOR

The side size indicator window displays the heel cup position to quickly match the binding to the boot size.



## TOOL-FREE ADJUSTMENT

Tool-free adjusting of riding position, binding angle, and strap length.



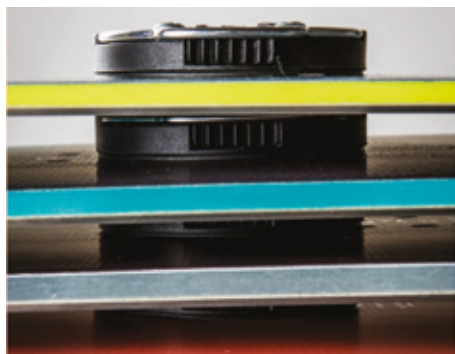
## COLOR CODE

For easy boot/binding size matching



## LOW DISC PROFILE

Low-profile disks stay permanently mounted on the board.



## SPEEDWHEEL 3.0 BUCKLE SYSTEM

Powerful, fast & built to last



## TWO DISC OPTIONS:

Tool-free version

Screw driver version



## HARDWARE SAVING

75% less hardware, leading to 80% faster setup times.



### NEW SCREW FOR LESS PLAY IN BOTH DISC ATTACHMENTS

#### FEATURE EVOLUTION FOR 26/27



### NEW BOTTOM PAD TO INCREASE FRICTION AND ELIMINATE ANY ROTATION OF BOTH DISC OPTIONS

#### FEATURE EVOLUTION FOR 26/27



# TEAM RENTAL PRO

THE ALL-MOUNTAIN INTERFACE FOR EVERYONE

USD \$200



- RIDES AND LOOKS LIKE A PRO BINDING
- COMES WITH A WEBBING LEASH AND STOMP PAD
- BINDING MOUNTS TOOL-FREE TO THE BOARD IN JUST SECONDS, EVEN IN ICY CONDITIONS

## SEASON 2026-27 PRODUCT IMPROVEMENT

- UPDATED BUCKLE SYSTEM AND RATCHETS

## RENTAL SPECIFIC FEATURES

- HARDWARE SAVING
- SIZE INDICATOR
- TOOL-FREE ADJUSTMENT
- COLOR CODED
- LOW DISC PROFILE
- SPEEDWHEEL 3.0 BUCKLE SYSTEM
- TWO DISC OPTIONS

## FEATURES

- EVA dampening - Lightweight shock absorption
- 3° canted footbed - For natural body positioning
- 3D OptiFrame Locked Down strap - Maximum response and control with 3D contours
- Übergrip toe strap - Perfect match, either over the top or around the toe cap
- Speedwheel 3.0 buckle system - Powerful, fast & built to last
- Cable reinforced connectors and ratchets - No stretch, no breaks, no worries!

## BOOT SIZES

### Small/Medium: ORANGE COLORWAY

5.0 - 9.5 US Men's / 6 - 10.5 US Women's / 23.0 - 27.5 Mondopoint

### Medium/Large: BLUE COLORWAY

10.0 - 14 US Men's / 28.0 - 32 Mondopoint

## PERFORMANCE



## ENVIRONMENTAL RESPONSIBILITY

Current CO<sub>2</sub> reduction initiatives:



MADE WITH 100% SOLAR POWER



UNISEX Rental Binding

# YOUTH RENTAL

THE SNOWBOARD CONNECTION STARTS HERE!

USD \$140

NITRO



- SPECIFICALLY DESIGNED FOR THE RENTAL ENVIRONMENT
- RIDES AND LOOKS LIKE A PRO BINDING
- COMES WITH A WEBBING LEASH AND STOMP PAD
- BINDING MOUNTS TOOL-FREE TO THE BOARD IN JUST SECONDS, EVEN IN ICY CONDITIONS

## SEASON 2026-27 PRODUCT IMPROVEMENT

- UPDATED BUCKLE SYSTEM AND RATCHETS

## RENTAL SPECIFIC FEATURES

- HARDWARE SAVING
- SIZE INDICATOR
- TOOL-FREE ADJUSTMENT
- COLOR CODED
- LOW DISC PROFILE
- SPEEDWHEEL 3.0 BUCKLE SYSTEM
- TWO DISC OPTIONS

## FEATURES

- EVA dampening - Lightweight shock absorption
- 3° canted footbed - For natural body positioning
- 3D OptiFrame Light strap - Lightweight and comfortable
- Übergrip toe strap - Perfect match, either over the top or around the toe cap
- Speedwheel 3.0 buckle system - Powerful, fast & built to last
- Cable reinforced connectors and ratchets - No stretch, no breaks, no worries!

## BOOT SIZES

### Youth: GREEN COLORWAY

3.0 - 5.5 US / 21.0 - 23.5 Mondopoint

## PERFORMANCE



YOUTH Rental Binding

## ENVIRONMENTAL RESPONSIBILITY

Current CO<sub>2</sub> reduction initiatives:



MADE WITH 100% SOLAR POWER



NEARLY ZERO WASTE PROCESS



PLASTIC FREE PACKAGING



20% RECYCLED PLASTIC



# KID'S RENTAL

FUN TO RIDE, EASY TO USE, AND BUILT TO LAST

USD \$78



- MAXIMUM ADJUSTABILITY TO FIT FOR YEARS OF PROGRESSION
- PERFECT FLEX AND FIT FOR KIDS
- KIDS-SPECIFIC BUCKLE LEVER

## SEASON 2026-27 PRODUCT IMPROVEMENT

- UPDATED BUCKLE SYSTEM AND RATCHETS

## RENTAL SPECIFIC FEATURES

- HARDWARE SAVING
- TOOL-FREE ADJUSTMENT
- COLOR CODED
- SPEEDWHEEL 3.0 BUCKLE SYSTEM

## FEATURES

- Tool-Less customization - No tools are required to adjust the strap and baseplate size to fit the boot
- 3D OptiFrame Kids strap - Response and freedom for kids
- Easy Entry buckles and ratchets - Secure and reliable connection without disrupting operations
- Cable Reinforced connector - No stretch, no breaks, no worries!
- Speed Wheel 3.0 buckles and ratchets - Powerful, fast & built to last

## BOOT SIZES

Kids: White colorway  
One Size: 12.0 - 2.5 US Kids / 17.5 - 20.5 Mondopoint

## PERFORMANCE



## ENVIRONMENTAL RESPONSIBILITY

Current CO<sub>2</sub> reduction initiatives:



MADE WITH 100% SOLAR POWER



KIDS Rental Binding



# BOOTS - RENTAL SPECIFIC FEATURES

While it is our goal to provide your customer with the authentic Nitro snowboarding experience, our rental boots feature a set of construction details and specifications especially designed to improve durability and handling of your rental fleet:



## RUGGED CONSTRUCTION

Durability protecting your investment



## COLOR CODE

For easy boot/binding size matching



## REAR SIZE INDICATOR

Find sizes quickly



## LACE SAVER PANEL

Protection against lace damage



## TRANSPARENT BARCODE POCKET

Easy stock management



## TONGUE PULLER LOOP

Easy entry and exit

### IN ADDITION, OUR ADULT MODELS FEATURE:



## REINFORCED SPINE CONSTRUCTION

More abrasion resistance



## SOLE SIZE INDICATOR

Find sizes quickly



## MOLDED TOE CAP

Durability and comfort



## RENTAL SPECIFIC ADULT LINER

Universal Nitro fit and comfort



## DLS (DIRECT LACING SYSTEM)

Dyneema® low-friction laces for ultimate fit and comfort



## PATENTED RE/LACE LINER LOCKER

Easy and precise liner lacing - all day long

### NEW LATERAL PULLER LOOPS

The Heel Loop has been replaced by two high-strength side Loops for improved durability and ease of use.

#### FEATURE EVOLUTION FOR 26/27



### NEW REAL RUBBER OUTSOLE

Modern design for reduced weight, maintaining maximum grip and up to 30% of recycled rubber

#### FEATURE EVOLUTION FOR 26/27





COLOR OPTIONS



UNISEX Rental Boot

- NITRO'S MOST ICONIC BOOT MODEL, NOW IN A RENTAL VERSION
- INTERMEDIATE TO ADVANCED RIDERS
- AVAILABLE IN 3 LACING OPTIONS

SEASON 2026-27 PRODUCT IMPROVEMENT



- NEW LATERAL PULLER LOOPS
- NEW REAL RUBBER OUTSOLE

RENTAL SPECIFIC FEATURES

- RUGGED CONSTRUCTION
- LACE SAVER PANEL
- COLOR CODED
- TRANSPARENT BARCODE POCKET
- REAR SIZE INDICATOR
- TONGUE PULLER LOOP
- REINFORCED SPINE CONSTRUCTION
- MOLDED TOE CAP
- SOLE SIZE INDICATOR
- RENTAL SPECIFIC ADULT LINER
- DLS (DIRECT LACING SYSTEM)
- PATENTED RE/LACE LINER LOCKER

FEATURES

- Molded Heel Spine - Maximum durability and sole protection
- Anatomical Footbed - Ergonomic shape for support and cushioning

PERFORMANCE



LACING OPTIONS

- TLS Lacing - Lightning-fast dual zone lacing, proven over years
- BOA® Fit System - Micro-adjustable precision fit
- Dual BOA® Fit System - Precise zonal micro adjustment

BOOT SIZES

US Men's:	5 - 14	EU:	36 - 48
US Women's:	6 - 15	UK Men's:	4 - 13
Mondopoint:	23.0 - 32.0		

ENVIRONMENTAL RESPONSIBILITY

Current CO<sub>2</sub> reduction initiatives





COLOR OPTIONS

UNISEX Rental Boot



M/L Blue

S/M Orange

- CLASSIC NITRO STYLING WITH RENTAL FEATURES
- BEGINNER TO INTERMEDIATE RIDERS
- BOA® FIT SYSTEM

SEASON 2026-27 PRODUCT IMPROVEMENT



- NEW LATERAL PULLER LOOPS
- NEW REAL RUBBER OUTSOLE

RENTAL SPECIFIC FEATURES

- RUGGED CONSTRUCTION
- LACE SAVER PANEL
- COLOR CODED
- TRANSPARENT BARCODE POCKET
- REAR SIZE INDICATOR
- TONGUE PULLER LOOP
- REINFORCED SPINE CONSTRUCTION
- MOLDED TOE CAP
- SOLE SIZE INDICATOR
- RENTAL SPECIFIC ADULT LINER
- DLS (DIRECT LACING SYSTEM)
- PATENTED RE/LACE LINER LOCKER

FEATURES

- Reinforced Spine Construction - More abrasion resistance
- Interlock System - Keeping your liner heel firmly in place
- EVA Footbed - Cushioning and thermal insulation

PERFORMANCE



LACING OPTIONS

- BOA® Fit System - Micro-adjustable precision fit

BOOT SIZES

US Men's:	5 - 14
US Women's:	6 - 15
Mondopoint:	23.0 - 32.0
EU:	36 - 48
UK Men's:	4 - 13

ENVIRONMENTAL RESPONSIBILITY

Current CO<sub>2</sub> reduction initiatives





# ACCESS YOUTH



## LACING OPTIONS

YOUTH Rental Boot

BOA® Fit System - Micro-adjustable precision fit

## BOOT SIZES

US Men's:	3 - 6.5	EU:	33 1/3 - 38
US Women's:	4 - 7.5	UK Men's:	2 - 5.5
Mondopoint:	21.0 - 24.5		

# ACCESS KIDS



## LACING OPTIONS

KIDS Rental Boot

BOA® Fit System - Micro-adjustable precision fit

## BOOT SIZES

US Kid's	12 - 2.5	EU	28 2/3 - 32 2/3
Mondopoint	17.5 - 20.5	UK Kid's	11 - 1.5

USD \$135

- LIGHTWEIGHT AND DURABLE YOUTH BOOT
- BEGINNER TO INTERMEDIATE RIDERS
- REMOVABLE LINER
- BOA® FIT SYSTEM

## RENTAL SPECIFIC FEATURES

- RUGGED CONSTRUCTION
- LACE SAVER PANEL
- COLOR CODED
- TRANSPARENT BARCODE
- POCKET
- REAR SIZE INDICATOR
- TONGUE PULLER LOOP

## FEATURES

- EVA Outsole - Lightweight and grippy
- Reinforced Heel Construction - More abrasion resistance
- Heel Puller Loop - Easy entry and exit
- Removable Light Liner - Universal Nitro fit and comfort
- Interlock System - Keeping your liner heel firmly in place
- EVA Footbed - Cushioning and thermal insulation

## PERFORMANCE



## ENVIRONMENTAL RESPONSIBILITY

Current CO<sub>2</sub> reduction initiatives



USD \$130

- LIGHTWEIGHT AND COMFORTABLE KIDS BOOT
- BEGINNER TO INTERMEDIATE RIDERS
- BOA® FIT SYSTEM

## RENTAL SPECIFIC FEATURES

- RUGGED CONSTRUCTION
- LACE SAVER PANEL
- COLOR CODED
- TRANSPARENT BARCODE
- POCKET
- REAR SIZE INDICATOR
- TONGUE PULLER LOOP

## FEATURES

- EVA Outsole - Lightweight and grippy
- Reinforced Heel Construction - More abrasion resistance
- Heel Puller Loop - Easy entry and exit
- Integrated Ace Liner - Support and thermal insulation
- EVA Footbed - Cushioning and thermal insulation

## PERFORMANCE



## ENVIRONMENTAL RESPONSIBILITY

Current CO<sub>2</sub> reduction initiatives







NITROSNOWBOARDS.COM

instagram.com/nitro\_snowboards  
tiktok.com/@nitrosnowboarding  
Youtube.com/@NitroSnowboardsOfficial



Printed in Germany



**PRINTED  
CO2 COMPENSATED**  
by KÖNIGSDRUCK  
koenigsdruck.de/umweltdruck