

Sarasota County Emergency Management Storm Information

PLEASE NOTE it is intentional that there are NO shelters in Venice. Shelters can only be placed in areas that will not suffer catastrophic flooding in the case of a direct hit. It is also NOT recommended to evacuate vertically, as in if you are in a high rise moving to higher floors traps you. In the case of medical emergencies, you have no chance of getting help. Below you will see a list of all the approved shelters for the 2019 Season. All shelters will be pet friendly, BUT you must understand and comply will all requirements (also listed below). If you use Facebook follow our local agency at: www.facebook.com/Sarasota-County-Emergency-Services. The following information is from the Sarasota County Government Pages. We encourage you to do your own homework. Here is a web link you will find useful!

Page for Emergency Services – Documents, Forms & Plans

<https://www.scgov.net/AllHazards/Pages/Documents.aspx>

Hurricane Evacuation Ctrs.	Address
Booker Middle School	2250 Myrtle St., Sarasota
Brookside Middle School	3636 S. Shade Ave., Sarasota
Southside Elementary School	1901 Webber St., Sarasota
Riverview High School	1 Ram Way, Sarasota
Booker High School	3201 N. Orange Ave., Sarasota
Phillippi Shores Elementary	4747 S. Tamiami Trail, Sarasota
Gulf Gate Elementary School	6500 S. Lockwood Ridge Rd, Sarasota
North Port High School	6400 W. Price Blvd., North Port
Heron Creek Middle School	6501 W. Price Blvd., North Port
Woodland Middle School	2700 Panacea Blvd., North Port
Atwater Elementary School	4701 Huntsville Ave., North Port

Another important thing to do as a hurricane season guest
 (Any time between June 1 – Nov. 30) **is to register for CODE RED.**
 Sarasota County utilizes the CodeRED Notification System - an ultra-high-speed telephone communication service - for emergency notifications. This system allows us to send critical communications to all or targeted areas within the county in case of a situation that requires immediate action. Visit **SCGOV.NET** and it is located under utilities or you can use the search on the site.

BEFORE YOU GO TO A CENTER:

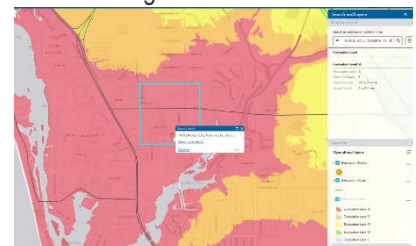
- Locate the water shut-off valve for your residence. The valve is generally on the side of the house nearest the water meter/backflow prevention device or may be inside the garage. Turn the valve to the off position. This will help minimize damage to the interior of your home should a pipe burst.
- Follow the manufacturer’s recommendations for turning off your water heater and unplug/switch off the circuit breaker.
- Place an ice cube or two in a sealed plastic bag or small container in the freezer. If the ice cube has melted down from its original shape by the time you return, you'll know the power was off for an extended period and that you should throw out any food.
- Remove loose items, decorative and otherwise, outside the house and in the yard, and place them inside. Even the smallest item becomes a dangerous weapon.
- Alert friends/ family members of your plans and how to contact you (or have an emergency buddy, like a neighbor that you trade plans/info)

WHAT TO BRING:

- Flashlight (in case your center loses power).
- Your Ins., Medicare or Medicaid cards, Driver license/photo I.D.
- Your children’s immunization/other important health/Ins. records
- Each family member’s medications, along with dosage information and physician’s contact information.
- Drinking water.
- Snacks or special foods.
- Bedding and pillows.
- Book or electronic entertainment items with headphones and chargers.
- Change of clothing.
- Personal hygiene items (including toilet paper).
- Games/comfort items for children.

Be sure to label (name and phone number) all equipment and belongings. This will help you receive your items if lost or left behind at the evacuation center. Before you leave your home be sure to leave your answering machine on or a porch light on to make it easier to determine if your electric has been restored.

Note from Edward McCrane, SRQ Emergency Management Chief EM-1: Please share this with your guests. I typically do not worry about the evacuation level for mobile home and RV parks because they are all automatically part of level A and must evacuate. But the proximity to Shakett Creek and the fact that the property is also in primary level A evacuation zone gives everyone *even more* reason to evacuate.



Sarasota County Emergency Management Storm Information Cont.

Assemble a Portable Pet Disaster Supplies Kit:

Whether you are away from home for a day or a week, you will need essential supplies to care for your pet. Keep items in an accessible place and store them in sturdy containers that can be carried easily (duffle bags, covered trash containers, etc.). Your pet disaster supply kit should include:

- Medications and medical records (stored in a waterproof container) and a first aid kit.
- Sturdy leashes, harnesses, and/or carriers to transport pets safely and ensure that your animals cannot escape.
- Photo of you and your pet(s) – in the event you are separated from your pet, having an updated photo with your pet will help validate pet ownership.
- Food, potable water, bowls, cat litter/pan, and can opener.
- Information on feeding schedules, medical conditions, behavior problems, and the name and number of your veterinarian in case you must foster or board your pets.
- Pet beds and toys, if easily transportable.

MEDICAL NEEDS PROGRAM

About the program- Sarasota County residents with qualifying medical needs are encouraged to apply for registration as a medically-dependent person (MDP). **How to Apply:** Submit an application to Sarasota County Emergency Management. Two ways to submit applications: **If you only need transportation to an evacuation center complete the** located online at https://scgovmedicalneeds.formstack.com/forms/transportation_dependent_registration .

1. Complete the *Medically-Dependent Person online app*. Located at https://intwebs2ext.scgov.net/em_forms/ (online applications will stop being accepted at 60 hours prior to expected impact of storm).
2. Complete a paper application and fax or mail it to emergency management. This method may delay the processing of your app. (paper applications will stop being accepted at 120 hours prior to expected impact storm.)

IMPORTANT NUMBERS

DURING A HURICANE, DO NOT USE 911 UNLESS THE EMERGENCY IS LIFE THREATENING.

EMERGENCIES 911

DISASTER ASSISTANCE 211

SARASOTA COUNTY

Sarasota County Emergency Mgmt	941-861-5000
Sarasota County Sheriff's Office	941-861-5800
South County Sheriff's Office (non-emergency assistance)	941-316-1201
Sarasota County Fire & EMS	941-861-5000
Sarasota County Public Works	941-861-5000
American Red Cross	941-379-9300

FEDERAL/STATE AGENCIES

FL Division of Emergency Mgmt	850-413-9969	TTY 800-226-4329
FL Department of Insurance	850-413-2842	
Small Business Administration	800-827-5722	
FL Department of Financial Services	877-693-5236	
National Flood Insurance Program	800-427-4661	
Disaster Assistance	800-621-FEMA	
Citizens Property Insurance Corp	888-685-1555	
To report a power outage:		
Florida Power & Light	1-800-4-OUTAGE (468-8243)	

Sarasota Co. Evacuation Map

