

# CORONET

High Quality Surgical Products  
for Cornea Graft Surgery





Innovia Medical is a **family of specialty surgical companies** that are passionately committed to partnering with medical professionals to help elevate the delivery of patient care and improve clinical outcomes.

### **ELEVATING CARE. IMPROVING OUTCOMES.**

---

Innovia Medical companies develop and manufacture solutions to deliver care that:

- Saves time for both the medical professional and patient
- Delivers a consistent and predictable care experience
- Improves patient confidence with reduced recovery times and less discomfort

We do this through a commitment to innovation leadership, unsurpassed product quality, and a dedication to provide responsive, personalized customer service.

### **INNOVATION LEADERSHIP.**

---

Innovation leadership is fueled through our dedication to medical professional collaboration. We regularly seek input from medical professionals through product research, testing and development. This allows us to understand the solutions medical professionals need, and guides our innovative culture focused on inventing new, industry-leading solutions across the specialty surgery spectrum.

### **UNSURPASSED PRODUCT QUALITY.**

---

Our products deliver proven solutions and dependability which is the result of rigorous quality control and a relentless commitment to ongoing manufacturing improvements. We use only the highest quality materials and subject all products to rigorous inspection protocols. This is why we're proud to have so many customers who have continued to rely on our solutions for more than forty years.

### **RESPONSIVE, PERSONALIZED CUSTOMER SERVICE.**

---

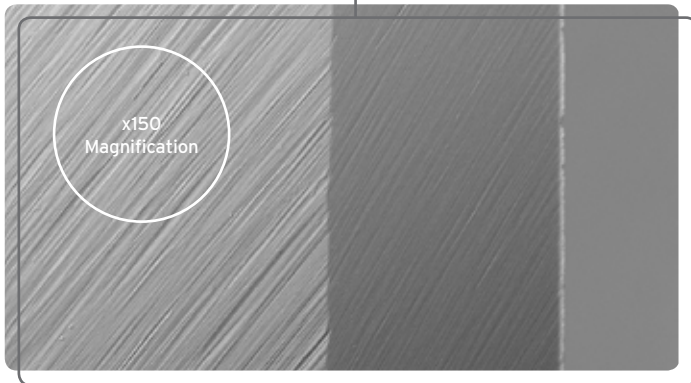
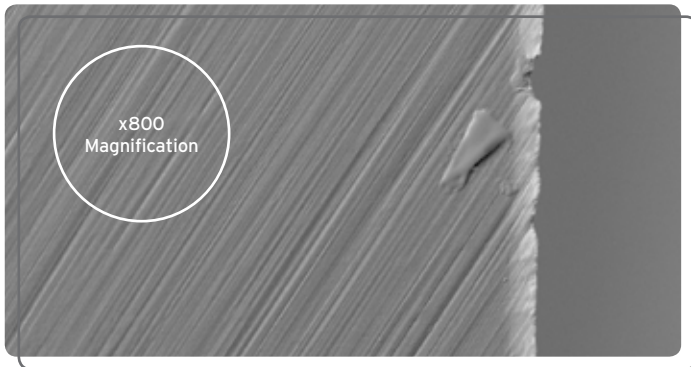
We strive to deliver an unrivaled customer experience ensuring each customer receives the products that meet their specific needs. We know you are committed to providing the best patient care experience possible and that's why we commit to being your trusted partner helping you every step of the way. At Innovia Medical, we are not just products, we are part of the patient care solution.

Learn more at [www.innoviamedical.com](http://www.innoviamedical.com).

# REASONS TO CHOOSE CORONET

The most important part of any trephine is the blade.  
**Exclusive CORONET® blade technology creates a precise and ultrasharp trephine.**

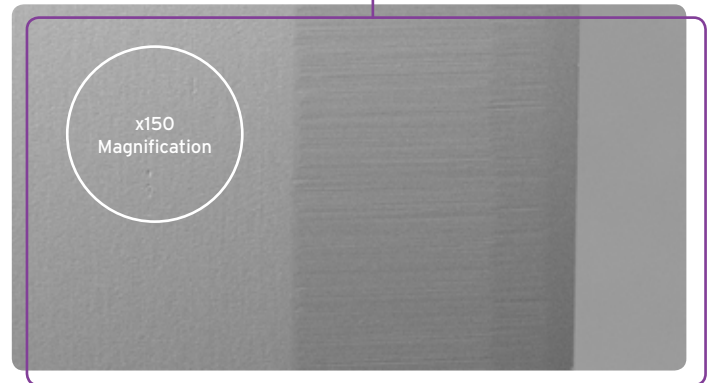
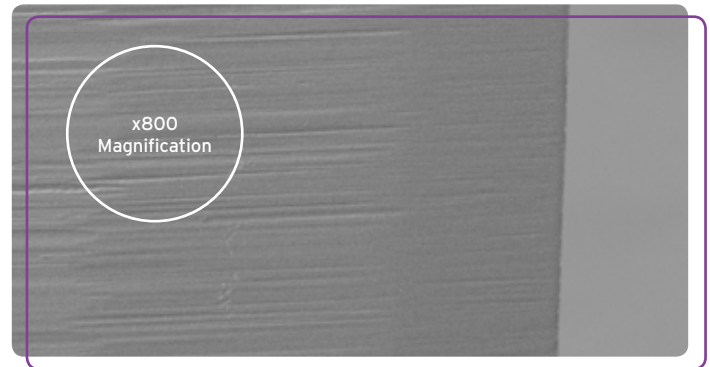
## TRADITIONAL TREPHINE Standard Blade Technology



### **Rough trephine blade edge with imperfect finish Single bevelled blade edge on the outside only**

- Distorts the tissue and creates undercut
- Retains donor graft
- Compromises on quality

## CORONET® TREPHINE Blade Technology



### **Smooth ultrasharp 70µm trephine blade edge Double bevelled and multifaceted structure**

- Improves wound architecture
- Provides reliable and consistent incisions
- Reduces endothelial cell loss

# RECIPIENT TREPHINES



STERILE EO



# PRODUCTS



Recipient Vacuum Trephine 51-840*	PK Clear-Vue™ Recipient Vacuum Trephine 51-842*	DALK Clear-Vue™ Recipient Vacuum Trephine (300µm) 51-844
--------------------------------------	---	--

## FEATURES

Ultrathin and Sharp Blade	•	•	•
Straight Walled Cut	•	•	•
Precision Cross Hair	•	•	•
Ergonomic Finger Grips	•	•	•
Marker Pin for Blade Progression	•	•	•
Windows for 360° Visual		•	•
Adaptive Vacuum Skirt		•	•
Transparent Body		•	•
Patent Protected		•	•
Shelf Life	5 Years	3 Years	3 Years
<b>PK</b>	•	•	
<b>DALK</b>			•

## SIZES (mm)

PRODUCTS	6.50	6.75	7.00	7.25	7.50	7.75	8.00	8.25	8.50	8.75	9.00	9.25	9.50
51-840*	•	•	•	•	•	•	•	•	•	•	•		•
51-842*	•	•	•	•	•	•	•	•	•	•	•		•
51-844					•		•		•		•		

\*Blade progression 0.063mm downward per quarter turn and 0.252mm per full rotation

# DONOR PUNCHES



STERILE EO



5 Year  
Shelf Life



# PRODUCTS

			
	<b>Donor Trephine Vacuum Punch 51-835</b>	<b>Donor Trephine Punch 51-850</b>	<b>DMEK Guarded Trephine Punch 51-855</b>
<b>FEATURES</b>			
Ultrathin and Sharp Blade	•	•	•
Straight Walled Cut	•	•	•
Windows for 360° Visual	•	•	•
Stable Platform Base	•	•	•
Anatomically Shaped Bowl	•	•	•
Protective Dust Cover	•	•	
Vacuum Function	•		•
Free Rotating Trephine	•	•	•
Patent Protected	•	•	•
Non-Glare Head	•	•	•
<b>PK</b>	•	•	
<b>DALK</b>	•	•	
<b>DSAEK/DSEK</b>	•	•	
<b>DMEK</b>	•	•	•

## SIZES (mm)

<b>PRODUCTS</b>	6.00	6.25	6.50	6.75	7.00	7.25	7.50	7.75	8.00	8.25	8.50	8.75	9.00	9.25	9.50	9.75	10.0
<b>51-835</b>	•	•	•	•	•	•	•	•	•	•	•	•	•	•	•	•	
<b>51-850</b>	•	•	•	•	•	•	•	•	•	•	•	•	•	•	•	•	
<b>51-855</b>							•		•		•		•		•		•

# TREPHINES



STERILE EO



5 Year  
Shelf Life





# PRODUCTS



	Guarded Trephine (300µm) 51-860	Guarded Trephine (400µm) 51-865	Standard Trephine 51-900	Standard Trephine with Cross Hair 51-901	Long Handled Trephine 51-903	Extractor Trephine 51-905
Ultrathin and Sharp Blade	•	•	•	•	•	
Straight Walled Cut	•	•	•	•	•	
Guarded Blade	•	•				
Non-Glare Head	•	•	•	•	•	
Precision Crosshair	•	•		•		
Ergonomically Balanced	•	•	•	•	•	•
PK			•	•	•	
DALK	•	•	•	•	•	
DMEK	•	•				
Eye Bank Recovery						•

## FEATURES

### SIZES (mm)

PRODUCTS	6.00	6.25	6.50	6.75	7.00	7.25	7.50	7.75	8.00	8.25	8.50	8.75	9.00	9.25	9.50	9.75	10.0	15.0	17.0	18.0	20.0	
51-860					•		•		•		•											
51-865					•		•		•		•											
51-900	•	•	•	•	•	•	•	•	•	•	•	•	•	•	•	•						
51-901	•	•	•	•	•	•	•	•	•	•	•	•	•	•	•	•						
51-903	•	•	•	•	•	•	•	•	•	•	•	•	•	•	•	•	•					
51-905																		•	•	•	•	

# ENDOGLIDE™



STERILE EO



5 Year  
Shelf Life



# PRODUCTS



**EndoGlide™ Ultrathin  
51-823**

**DMEK EndoGlide™  
51-826**

## FEATURES

	EndoGlide™ Ultrathin 51-823	DMEK EndoGlide™ 51-826
Paracentesis Pull-Through Approach	•	•
Closed Cartridge System	•	•
Reduced Endothelial Cell Loss	•	•
Forcep Guide Bridge	•	•
2.65mm Clear Corneal Incision		•
4.5mm Scleral Tunnel Incision	•	
Double Coil Technique	•	
Tri-Fold Technique		•
Patent Protected	•	•
<b>DSAEK/DSEK</b>	•	
<b>DMEK</b>		•

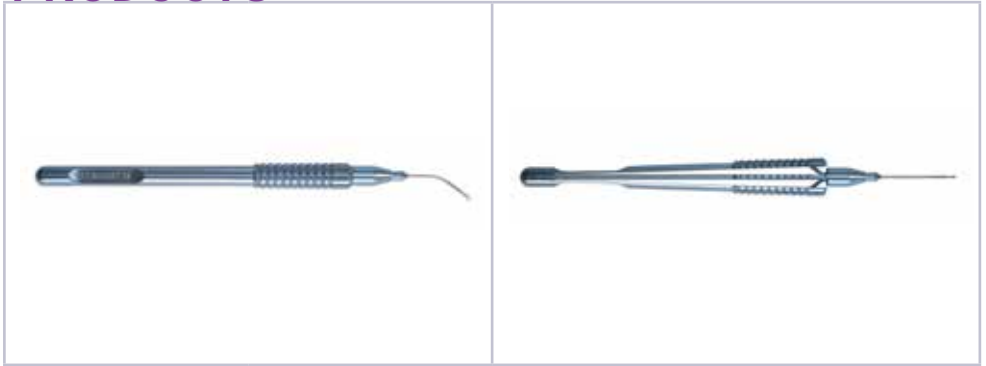
Also available EndoGlide™ support platform (53-920)

# ENDOGLIDE™ FORCEPS

---



# PRODUCTS



## FEATURES

	Tan EndoGlide™ Placement Forceps (23G) 53-951	EndoGlide™ Placement Forceps (27G) 53-955	Tan EndoGlide™ Loading Forceps (23G) 53-952	EndoGlide™ Loading Forceps (27G) 53-956
Lightweight Handle	•	•	•	•
Ergonomically Balanced	•	•	•	•
Titanium	•	•	•	•
Tissue Loading			•	•
Tissue Placement	•	•		
1mm Wide Jaws	•	•	•	•
23G	•		•	
27G		•		•
<b>DSAEK/DSEK</b>	•		•	
<b>DMEK</b>	•	•	•	•

# ARTIFICIAL ANTERIOR CHAMBER







# PRODUCTS







	Artificial Anterior Chamber 51-935*	Surgical Trainer 51-3000	Surgical Trainer Refill Kit 51-3010
Small Tissue Retainer 14.5 - 16.0mm	•		
Large Tissue Retainer 16.0 - 18.0mm	•	•	
Precision Cross Hair	•		
Weighted Platform Base	•	•	
Luer Lock	•	•	•
Manual Trephine Compatible	•		
Femtosecond Laser Compatible	•		
Reusable Training Unit		•	
Supplied Non-Sterile		•	•
Per Box	1	1	10
<b>PK</b>	•		
<b>DALK</b>	•		
<b>DSAEK/DSEK</b>	•	•	•
<b>DMEK</b>	•	•	•





\*51-935 is sold sterile, single use with a 5 year shelf life





# QUICK REFERENCE GUIDE

Product	Size	Code	Per Box	 Shelf Life				PK	DALK	DSAEK/ DSEK	DMEK
<b>Recipient Vacuum Trepine 51-840</b>	6.50	51-840-6.50	1	5	•	•	•	•			
	6.75	51-840-6.75	1	5	•	•	•	•			
	7.00	51-840-7.00	1	5	•	•	•	•			
	7.25	51-840-7.25	1	5	•	•	•	•			
	7.50	51-840-7.50	1	5	•	•	•	•			
	7.75	51-840-7.75	1	5	•	•	•	•			
	8.00	51-840-8.00	1	5	•	•	•	•			
	8.25	51-840-8.25	1	5	•	•	•	•			
	8.50	51-840-8.50	1	5	•	•	•	•			
	8.75	51-840-8.75	1	5	•	•	•	•			
	9.00	51-840-9.00	1	5	•	•	•	•			
9.50	51-840-9.50	1	5	•	•	•	•				
<b>PK Clear-Vue™ Recipient Vacuum Trepine 51-842</b>	6.50	51-842-6.50	1	3	•	•	•	•			
	6.75	51-842-6.75	1	3	•	•	•	•			
	7.00	51-842-7.00	1	3	•	•	•	•			
	7.25	51-842-7.25	1	3	•	•	•	•			
	7.50	51-842-7.50	1	3	•	•	•	•			
	7.75	51-842-7.75	1	3	•	•	•	•			
	8.00	51-842-8.00	1	3	•	•	•	•			
	8.25	51-842-8.25	1	3	•	•	•	•			
	8.50	51-842-8.50	1	3	•	•	•	•			
	8.75	51-842-8.75	1	3	•	•	•	•			
	9.00	51-842-9.00	1	3	•	•	•	•			
9.50	51-842-9.50	1	3	•	•	•	•				
<b>DALK Clear-Vue™ Recipient Vacuum Trepine (300µm) 51-844</b>	7.50	51-844-7.50	1	3	•	•	•		•		
	8.00	51-844-8.00	1	3	•	•	•		•		
	8.50	51-844-8.50	1	3	•	•	•		•		
	9.00	51-844-9.00	1	3	•	•	•		•		



Product	Size	Code	Per Box	 Shelf Life				PK	DALK	DSAEK/DSEK	DMEK
<b>Donor Trepine Vacuum Punch 51-835</b>	6.00	51-835-6.00	1	5	•	•	•	•	•	•	•
	6.25	51-835-6.25	1	5	•	•	•	•	•	•	•
	6.50	51-835-6.50	1	5	•	•	•	•	•	•	•
	6.75	51-835-6.75	1	5	•	•	•	•	•	•	•
	7.00	51-835-7.00	1	5	•	•	•	•	•	•	•
	7.25	51-835-7.25	1	5	•	•	•	•	•	•	•
	7.50	51-835-7.50	1	5	•	•	•	•	•	•	•
	7.75	51-835-7.75	1	5	•	•	•	•	•	•	•
	8.00	51-835-8.00	1	5	•	•	•	•	•	•	•
	8.25	51-835-8.25	1	5	•	•	•	•	•	•	•
	8.50	51-835-8.50	1	5	•	•	•	•	•	•	•
	8.75	51-835-8.75	1	5	•	•	•	•	•	•	•
	9.00	51-835-9.00	1	5	•	•	•	•	•	•	•
	9.25	51-835-9.25	1	5	•	•	•	•	•	•	•
	9.50	51-835-9.50	1	5	•	•	•	•	•	•	•
9.75	51-835-9.75	1	5	•	•	•	•	•	•	•	
<b>Donor Trepine Punch 51-850</b>	6.00	51-850-6.00	1	5	•	•	•	•	•	•	•
	6.25	51-850-6.25	1	5	•	•	•	•	•	•	•
	6.50	51-850-6.50	1	5	•	•	•	•	•	•	•
	6.75	51-850-6.75	1	5	•	•	•	•	•	•	•
	7.00	51-850-7.00	1	5	•	•	•	•	•	•	•
	7.25	51-850-7.25	1	5	•	•	•	•	•	•	•
	7.50	51-850-7.50	1	5	•	•	•	•	•	•	•
	7.75	51-850-7.75	1	5	•	•	•	•	•	•	•
	8.00	51-850-8.00	1	5	•	•	•	•	•	•	•
	8.25	51-850-8.25	1	5	•	•	•	•	•	•	•
	8.50	51-850-8.50	1	5	•	•	•	•	•	•	•
	8.75	51-850-8.75	1	5	•	•	•	•	•	•	•
	9.00	51-850-9.00	1	5	•	•	•	•	•	•	•
	9.25	51-850-9.25	1	5	•	•	•	•	•	•	•
	9.50	51-850-9.50	1	5	•	•	•	•	•	•	•
9.75	51-850-9.75	1	5	•	•	•	•	•	•	•	

Product	Size	Code	Per Box	 Shelf Life				PK	DALK	DSA EK/ DSEK	DMEK
<b>DMEK Guarded Trepine Punch 51-855</b>	7.50	51-855-7.50	1	5	•	•	•				•
	8.00	51-855-8.00	1	5	•	•	•				•
	8.50	51-855-8.50	1	5	•	•	•				•
	9.00	51-855-9.00	1	5	•	•	•				•
	9.50	51-855-9.50	1	5	•	•	•				•
	10.00	51-855-10.00	1	5	•	•	•				•
<b>Guarded Trepine (300µm) 51-860</b>	7.00	51-860-7.00	1	5	•	•	•		•		•
	7.50	51-860-7.50	1	5	•	•	•		•		•
	8.00	51-860-8.00	1	5	•	•	•		•		•
	8.50	51-860-8.50	1	5	•	•	•		•		•
<b>Guarded Trepine (400µm) 51-865</b>	7.00	51-865-7.00	1	5	•	•	•		•		•
	7.50	51-865-7.50	1	5	•	•	•		•		•
	8.00	51-865-8.00	1	5	•	•	•		•		•
	8.50	51-865-8.50	1	5	•	•	•		•		•
<b>Long Handled Trepine 51-903</b>	6.00	51-903-6.00	1	5	•	•	•	•	•		
	6.25	51-903-6.25	1	5	•	•	•	•	•		
	6.50	51-903-6.50	1	5	•	•	•	•	•		
	6.75	51-903-6.75	1	5	•	•	•	•	•		
	7.00	51-903-7.00	1	5	•	•	•	•	•		
	7.25	51-903-7.25	1	5	•	•	•	•	•		
	7.50	51-903-7.50	1	5	•	•	•	•	•		
	7.75	51-903-7.75	1	5	•	•	•	•	•		
	8.00	51-903-8.00	1	5	•	•	•	•	•		
	8.25	51-903-8.25	1	5	•	•	•	•	•		
	8.50	51-903-8.50	1	5	•	•	•	•	•		
	8.75	51-903-8.75	1	5	•	•	•	•	•		
	9.00	51-903-9.00	1	5	•	•	•	•	•		
	9.25	51-903-9.25	1	5	•	•	•	•	•		
	9.50	51-903-9.50	1	5	•	•	•	•	•		
	9.75	51-903-9.75	1	5	•	•	•	•	•		
10.00	51-903-10.00	1	5	•	•	•	•	•			

Product	Size	Code	Per Box	 Shelf Life				PK	DALK	DSAEK/DSEK	DMEK
<b>Exactor Trephine 51-905</b>	15.0	51-905-15.00	1	5	•	•					
	17.0	51-905-17.00	1	5	•	•					
	18.0	51-905-18.00	1	5	•	•					
	20.0	51-905-20.00	1	5	•	•					
<b>Artificial Anterior Chamber 51-935</b>		51-935	1	5	•	•		•	•	•	•
<b>Surgical Trainer 51-3000</b>		51-3000	1							•	•
<b>Surgical Trainer Refill Kit 51-3010</b>		51-3010	10		•					•	•
<b>EndoGlide™ Ultrathin 51-823</b>		51-823	1	5	•	•				•	
<b>DMEK Endoglide™ 51-826</b>		51-826	1	5	•	•					•
<b>Tan EndoGlide™ Placement Forceps (23G) 53-951</b>	23G	53-951	1							•	•
<b>EndoGlide™ Placement Forceps (27G) 53-955</b>	27G	53-955	1								•
<b>Tan EndoGlide™ Loading Forceps (23G) 53-952</b>	23G	53-952	1							•	•
<b>Endoglide™ Loading Forceps (27G) 53-956</b>	27G	53-956	1								•
<b>EndoGlide™ Support Platform 53-920</b>		53-920	1							•	•

## MORE FROM INNOVIA MEDICAL

Visit [www.innoviamedical.com](http://www.innoviamedical.com) for more information about Innovia Medical's surgical specialty products including Eagle Labs' ophthalmic surgical knives, blades and cannula and EYETEC®'s ophthalmic PVA and cellulose sponges.

**CORONET®**

Ophthalmology

**Network Medical Products, an Innovia Medical Company**

Coronet House, Kearsley Road,  
Ripon, North Yorkshire, HG4 2SG | UK

**International** +44 (0) 1765 609555 | **US** 1.888.229.2875

[www.innoviamedical.com/coronet](http://www.innoviamedical.com/coronet) | [www.networkmedical.co.uk](http://www.networkmedical.co.uk)

CORONET®, Clear-Vue™, EndoGlide™ and EYETEC® are trademark or registered trademarks of Network Medical, an Innovia Medical Company.

©2019 Innovia Medical. All rights reserved. CL\_COR\_001 Rev 06/10/19

