

SITE OBSERVATION REPORT

PROJECT No.: 170381202		DATE: Saturday, September 26, 2020	
PROJECT: 250 Water Street	CLIENT: 250 Seaport District, LLC	WEATHER: Overcast, 68-75 °F Wind: SE @ 0 to 7 mph	
LOCATION: New York, NY		TIME: 6:00 am – 15:45 pm	
BCP SITE ID: C231127		CONTRACTOR: ConeTec	
CONTRACTOR: ConeTec		LANGAN REP. : Tyler Zorn	
EQUIPMENT: CPT Rig Jerome J505 and J405 MiniRAE 3000 Dusttrak DRX		PRESENT AT SITE: Tyler Zorn, Maedeh Tavakoli – Langan Geotechnical Investigation Day 1	
OBSERVATIONS, DISCUSSIONS, TEST RESULTS, ETC.: <p>Langan implemented the Community Air Monitoring Plan (CAMP) during a geotechnical investigation at the 250 Water Street site (New York State Department of Environmental Conservation [NYSDEC] Brownfield Cleanup Program [BCP] Site No. C231127).</p> <p>Site Activities</p> <ul style="list-style-type: none"> ConeTec used a Cone Penetration Test (CPT) truck rig to test five CPT locations. ConeTec encountered refusal at all five CPT locations from 6-10 feet below grade surface (bgs). <p>Material Tracking</p> <ul style="list-style-type: none"> No material was imported to the site. No material was exported from the site. <p>Sampling</p> <ul style="list-style-type: none"> No samples were taken. 			
Cc: J. Yanowitz, P. McMahon, M. Raygorodetsky	By: Tyler Zorn	LANGAN	

SITE OBSERVATION REPORT

CAMP Activities

Langan performed air monitoring during ground-intrusive activities. Fifteen-minute average concentrations of particulate matter smaller than 10 microns in diameter (PM10), mercury vapor, and VOCs did not exceed action levels for the duration of work activities. Daily background concentrations for PM10, VOCs, and mercury vapor based on the June 16, 2020 baseline air monitoring event were 0.025 milligrams per cubic meter (mg/m³) for PM10, 0.5 ppm for VOCs, and 0.0 µg/m³ for mercury vapor.

Daily Average Concentrations			
Station ID	Particulate (mg/m ³)	Organic Vapor (ppm)	Mercury Vapor (µg/m ³)
PM-1	0.028	0.0	0.0
PM-2	0.034	0.0	0.0
PM-3	0.012	0.0	0.0
PM-4	0.024	0.0	0.0
PM-5	0.017	0.0	0.0
PM-6	0.023	0.0	0.0
WZ-1	0.024	0.0	0.0

mg/m³ = milligrams per cubic meter
 ppm = parts per million
 µg/m³ = micrograms per cubic meter

Maximum 15-Minute-Average Concentration			
Station ID	Particulate (mg/m ³)	Organic Vapor (ppm)	Mercury Vapor (µg/m ³)
PM-1	0.062	0.0	0.0
PM-2	0.063	0.0	0.0
PM-3	0.036	0.0	0.0
PM-4	0.053	0.0	0.0
PM-5	0.064	0.0	0.0
PM-6	0.052	0.0	0.0
WZ-1	0.057	0.0	0.0

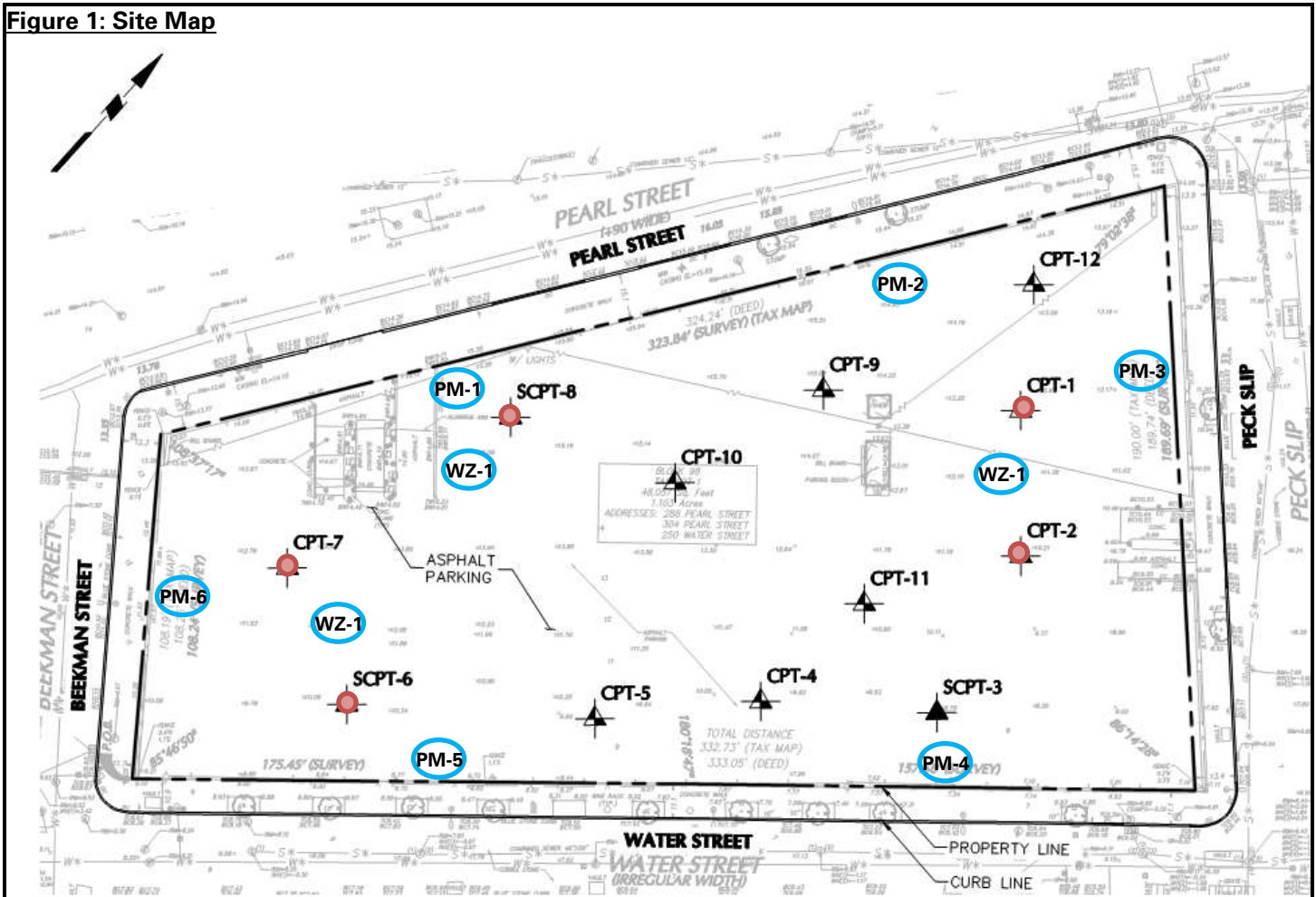
Anticipated Activities

- None.





Cc:	J. Yanowitz, P. McMahon, M. Raygorodetsky	By:	Tyler Zorn
			LANGAN

SITE OBSERVATION REPORT

Figure 1: Site Map



Legend:

-  Site Boundary
-  Approximate location of attempted CPT
-  Approximate location of air monitoring station (on-site)
-  Approximate locations of work zone air monitoring station

Notes:

- 1) Air monitoring station were relocated based on work area and wind direction. Locations shown above identify the predominant area of the air monitoring station.

Cc:	J. Yanowitz, P. McMahon, M. Raygorodetsky	By:	Tyler Zorn LANGAN
-----	---	-----	-----------------------------

SITE OBSERVATION REPORT

Select Site Photographs:



Photo 1: View of ConeTec testing at SCPT-6 (facing south).



Photo 2: View of ConeTec testing at SCPT-7.

Cc:	J. Yanowitz, P. McMahon, M. Raygorodetsky	By:	Tyler Zorn
			LANGAN