

SITE OBSERVATION REPORT

PROJECT No.: 170381202 PROJECT: 250 Water Street LOCATION: New York, NY BCP SITE ID: C231127	CLIENT: 250 Seaport District, LLC	DATE: Monday, June 14, 2021 WEATHER: Rain, 65-74 °F Wind: SSE @ 0.7 mph (9:30am) to SW @ 6.9 mph (11:44am) TIME: 9:00 am – 3:00 pm
CONTRACTOR: La Life Paving, Inc. (La Life Paving)		LANGAN REP. : Tomas Monti, Adrian Heath
EQUIPMENT: Bobcat S770 Plate Compactor Jerome J505 and J405 MiniRAE 3000 Dusttrak DRX	PRESENT AT SITE: Tomas Monti, Adrian Heath – Langan Antonio Agro – La Life Paving	
OBSERVATIONS, DISCUSSIONS, TEST RESULTS, ETC.: Langan began the parking lot repairs in accordance with the New York State Department of Environmental Conservation (NYSDEC)-approved June 8, 2021 Parking Lot Repair Work Plan for NYSDEC Brownfield Cleanup Program (BCP) Site No. C231127 located at 250 Water Street (Block 98, Lot 1). Site Activities <ul style="list-style-type: none"> La Life Paving backfilled the depressed area near the corner of Water Street and Beekman Street with recycled concrete aggregate (RCA) Item 4 from Hunters Point Recycling in Long Island City, NY. The depressed area was backfilled and compacted in 4-inch lifts to about three inches below the site grade. La Life Paving cut edges in the existing asphalt around the perimeter of the depressed area and cleaned and removed loose asphalt. Material Tracking <ul style="list-style-type: none"> Two truckloads of approved RCA Item 4 (about 40 cubic yards) were imported to the site from Hunters Point Recycling located in Long Island City, New York. No material was exported from the site. Sampling <ul style="list-style-type: none"> No samples were collected. 		
Cc: J. Yanowitz, P. McMahon, M. Raygorodetsky	By: Tomas Monti LANGAN	

SITE OBSERVATION REPORT

CAMP Activities

Langan performed air monitoring during parking lot repair activities. Fifteen-minute average concentrations of particulate matter smaller than 10 microns in diameter (PM10), mercury vapor, and volatile organic compounds (VOC) did not exceed action levels for the duration of work activities. Daily background concentrations for PM10, VOCs, and mercury vapor based on the June 16, 2020 baseline air monitoring event were 0.025 milligrams per cubic meter (mg/m³) for PM10, 0.5 parts per million (ppm) for VOCs, and 0.0 micrograms per cubic meter (µg/m³) for mercury vapor.

Daily Average Concentrations			
Station ID	Particulate (mg/m ³)	Organic Vapor (ppm)	Mercury Vapor (µg/m ³)
PM-1	0.000	0.0	0.0
PM-2	0.010	0.0	0.0
PM-3	0.015	0.2	0.0
PM-4	0.012	0.1	0.0
PM-5	0.015	0.0	0.0
PM-6	0.007	0.0	0.0
WZ-1	0.016	0.1	0.0

Maximum 15-Minute-Average Concentration			
Station ID	Particulate (mg/m ³)	Organic Vapor (ppm)	Mercury Vapor (µg/m ³)
PM-1	0.002	0.0	0.0
PM-2	0.017	0.0	0.0
PM-3	0.050	0.0	0.0
PM-4	0.025	0.2	0.0
PM-5	0.045	0.0	0.0
PM-6	0.012	0.0	0.0
WZ-1	0.025	0.0	0.0

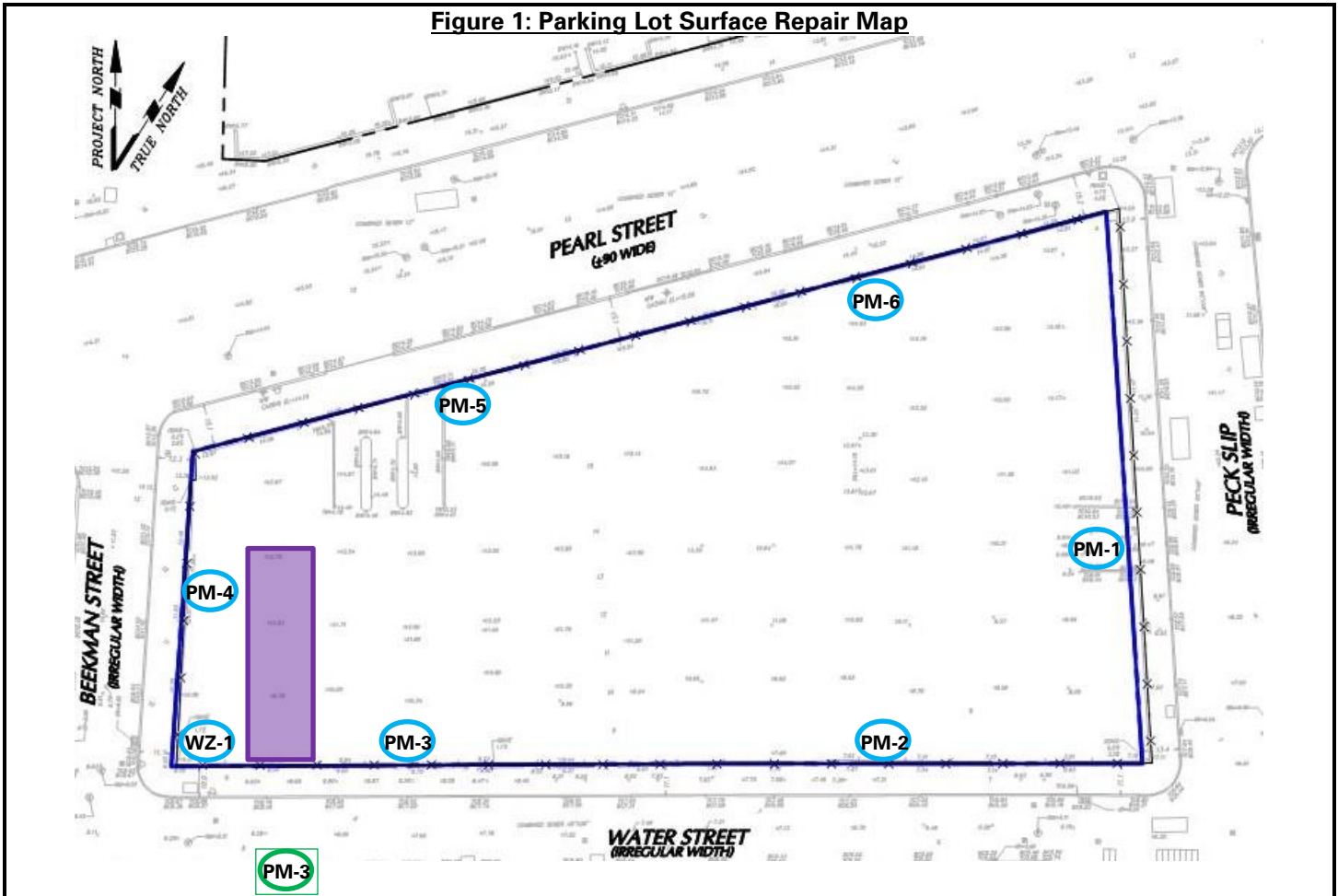
Anticipated Activities

- La Life Paving will repair the weathered asphalt on the eastern part of the site and pave the depressed area with asphalt.

Cc:	J. Yanowitz, P. McMahon, M. Raygorodetsky	By:	Tomas Monti
			LANGAN

SITE OBSERVATION REPORT

Figure 1: Parking Lot Surface Repair Map



Legend:

- PM-1 Approximate location of air monitoring station (on-site)
- PM-1 Approximate location of air monitoring station (off-site)
- WZ-1 Approximate locations of work zone air monitoring station
- Approximate location of parking lot surface repair

Notes:

1) Air monitoring station were relocated based on work area and wind direction. Locations shown above identify the predominant area of the air monitoring station.

Cc:	J. Yanowitz, P. McMahon, M. Raygorodetsky	By:	Tomas Monti
			LANGAN

SITE OBSERVATION REPORT

Select Site Photographs:

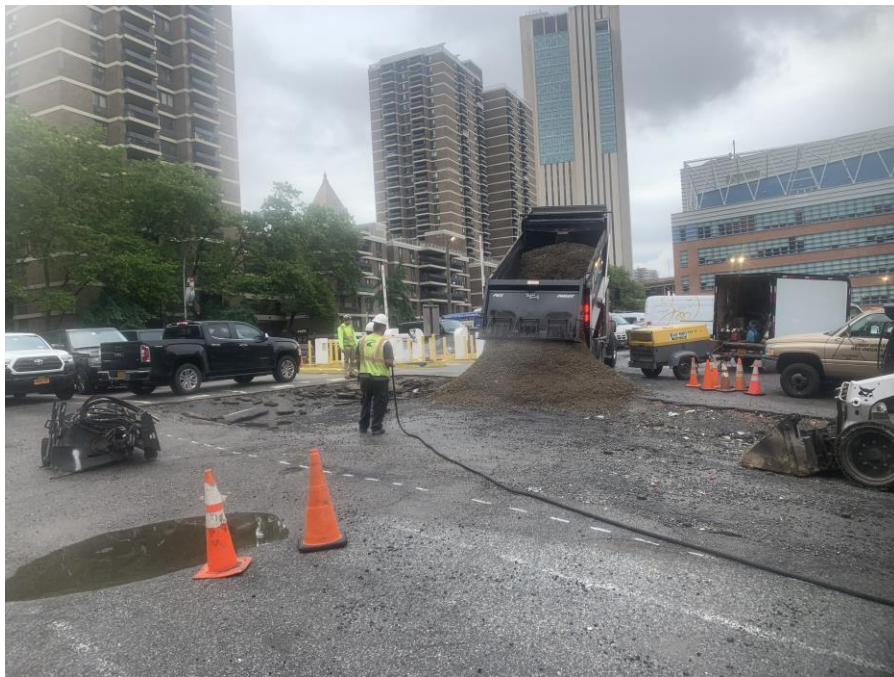


Photo 1: View of RCA import and dust suppression (facing project northwest).



Photo 2: View of parking lot surface repair and CAMP station PM-4 and PM-5 (facing project north).

Cc:	J. Yanowitz, P. McMahon, M. Raygorodetsky	By:	Tomas Monti
			LANGAN