

Middle of the Food Chain

Emily Braswell & Jenna Rees strawberriemilk & warmmilkwithsugar 81C Arts St Thomas USVI

Community Partnership Proposal June / July 2026



EXHIBITION OVERVIEW:

Middle of The Food Chain is a conceptual body of work that follows the story of a fictional '80s movie star, Krankie, who, in 2026, has fallen out of relevancy and is desperate to immortalize his legacy. The narrative work spans across multiple mediums: painting, sculpture, video, and installation. The exhibition fully transforms 81C's flagship location in historic Charlotte Amalie into an invented world that transports the viewers. The interdisciplinary work tells the story of Krankie's journey to understand fame in the digital age.

PROPOSAL OVERVIEW:

81C Arts is seeking additional funding to bring artists Emily Braswell and Jenna Rees to St. Thomas for a series of artist talks and educational programs this June and July as *Middle of the Food Chain* enters its final phase.

ABOUT THE ARTISTS:

Braswell and Rees are collaborative art partners working under the aliases Strawberriemilk & Warmmilkwithsugar. Their practice centers on painting, accompanied by video, installations, and sculpture. Their lifelong friendship has fueled their collaborations for over a decade. The partnership began at UNCSA, an arts boarding school they attended on merit scholarships. They later reconnected in Atlanta, gaining recognition for pairing paintings with conceptual installations. After relocating to The Virgin Islands, first to St Croix, they exhibited "Good Luck, Have Fun" in St Thomas, "Krankie I" in Los Angeles, and now they base their practice in San Juan, exhibiting internationally with an emphasis in the Caribbean.

Vanity, 2026
Epoxy clay, found plastic, acrylic, video monitor
11 x 24 x 16 inch



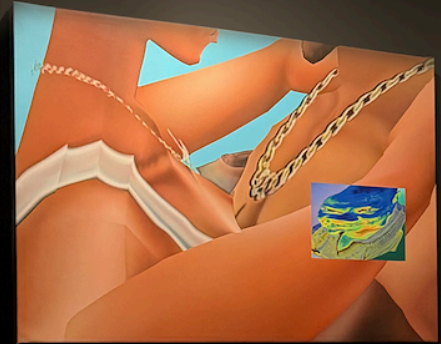


THE ARTIST TALK EVENTS:

81C aims to host a dual-location artist talk in St. Thomas at the end of June. The first event will take place at the XIID Research & Strategy Innovation Center at UVI and the second amidst the immersive exhibition at 81C. The goal is to highlight the importance of conversation surrounding contemporary art in St. Thomas, by bringing together students, locals, visitors, professional artists and gallery representatives. We strive to spark connections between the worlds of education, fine art, and community.

** A still from Krankie film*

EDUCATION & FINAL PRODUCTION:



Our goal is to bring the artists back to activate the gallery with a youth enrichment series.

This includes hosting field trips with local classes and utilizing the exhibition's closing to train gallery interns on professional deinstallation and art handling techniques.

The artists are prepared to host, teach, and engage with students, as well as guide our interns on the processes used to transform gallery spaces and ship artwork with care.

Angel Babies, 2026

Epoxy clay, found ceramic, and found plastic

12 x 48 x 3 inch



FUNDRAISING GOALS:

We are raising capital to expand the positive impact and community reach that this highly-contemporary, immersive art exhibition has on St. Thomas.

With your tax deductible charitable support, we can achieve our mission to bring a dual-location artist talk, field trip series, and vocational mentorship programming to life amidst the final phase of Middle of the Food Chain.

Artist Talk &
Field Trip Series
June, 2026
\$4,620



Education &
Closing
Production
July, 2026
\$5,270



Total
\$9,890

* A still from *Krankie* film

DONOR RECOGNITION:

Donors joining in this project's support will be represented in all promotional materials, within 81C, UVI, print and online.

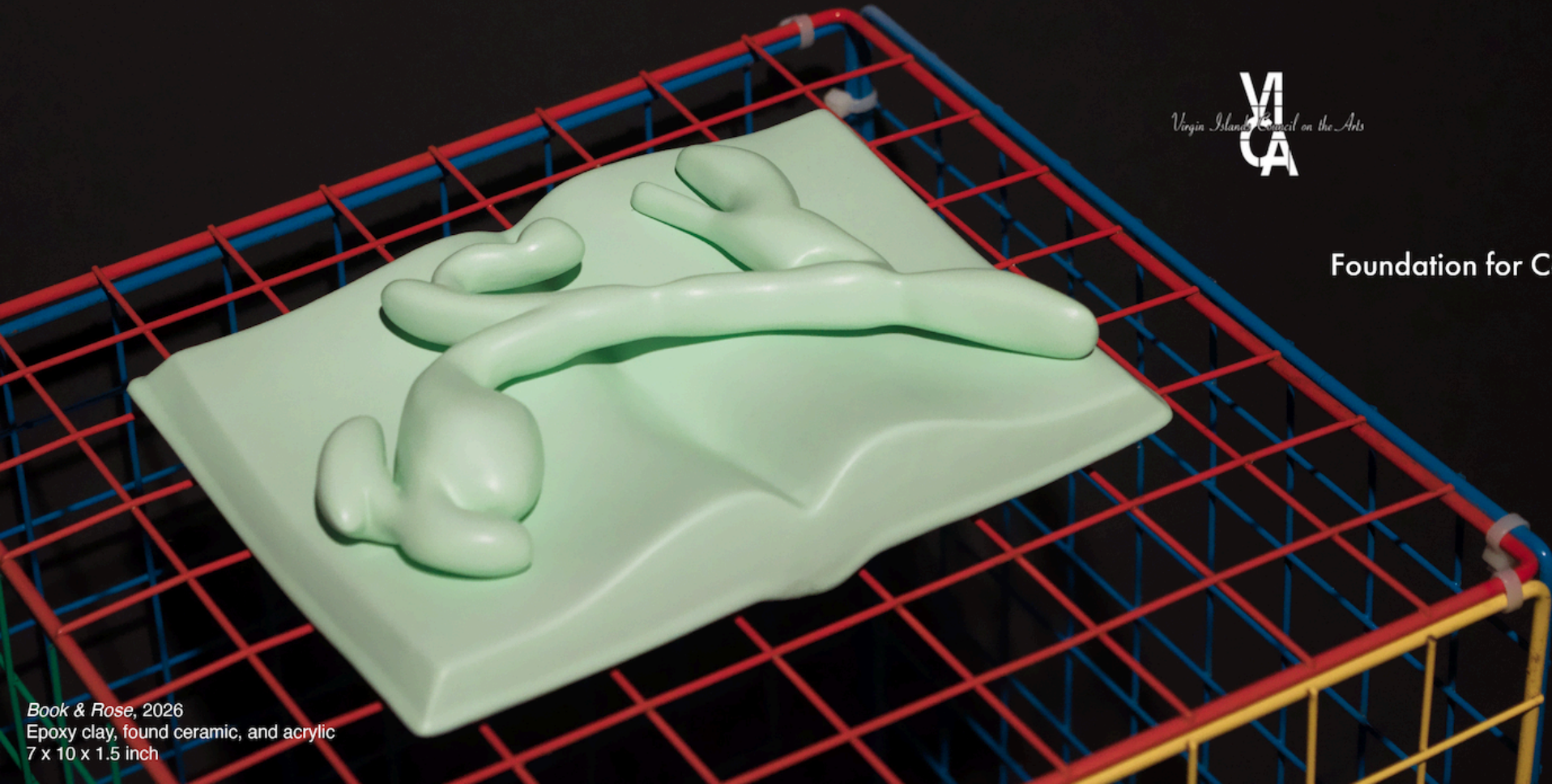
Current sponsors and community partners:



University of the Virgin Islands



Foundation for Contemporary Arts



Book & Rose, 2026
Epoxy clay, found ceramic, and acrylic
7 x 10 x 1.5 inch

Thank you

for your time and consideration. We hope you join us in support of this project's dedication to exposure and education of contemporary art in the territory.

81C
ARTS

Zack Zook
81C Arts Executive Dir.
zacharyzook@gmail.com
917.327.1561

