



The Exponent

FEBRUARY, 1989

The University of Chicago Women's Business Group

Schipper Speaks at February Alumni Box Lunch

Katherine Schipper, GSB Professor of Accounting will speak at the alumni box lunch program on Wednesday, February 22, 1989. Her topic will be "The Implications of Debt: Potential Causes, Costs and Benefits of the Recent Increases in Corporate Leverage."

Professor Schipper received both her MBA ('73) and Ph.D. ('76) from the Graduate School of Business and has been on the University of Chicago faculty since 1983. Her research interests have been varied including corporate governance; the effects of regulatory changes on shareholder wealth; and corporate restructuring through the use of management buyouts, spin-offs, mergers and acquisitions.

The box luncheon series is held at One First National Plaza (Clark and Madison), Suite 2718 from 12 noon until 1:30 p.m.

To make a reservation for this topical discussion, send your check for \$11 (payable to The University of Chicago) to *Box Lunch Committee, GSB Alumni Office, The University of Chicago, 1101 East 58th Street, Chicago, IL 60637.*

For more information call the Alumni Office at (312) 702-7727



Voss Group Schedules Three-part Career Management Series

Are you in the 'ideal' job for your background yet you're not happy? . . . Are you thinking about a mid-life career change? . . . Have you recently been 'outplaced'?

The Voss Group is offering a flexible three-session program to help you assess your potential and opportunities, and give you the skills to manage the job search process. The series, sponsored by the UCWBG Career Management Committee, will be held at 190 East Delaware on four Saturdays in February and March. Priority registration and a discounted price are being offered for this program. Participants may sign up for one, two, or all three workshops according to their needs and interests.

Part I is a full day (8:30 a.m. - 3:00 p.m.) workshop including job evaluation and a skills and interests inventory. It is limited to 15 participants each on February 25 and March 4. Part II, a half-day workshop (8:30 a.m. - 12:00 noon), on March 11 explores published and unpublished sources of job opportunities. Finally, on March 25, Part III focuses on skills to survive the interview process including getting your message across the interview table. This is also a half day workshop (8:30 a.m. - 12:00 noon).

Space is limited so use the coupon on page 3 to register for the Career Planning Series

Don't Be Left Out

The deadline for membership renewals is quickly approaching, if you want to be included in the 1989 Membership Directory! The formal deadline is past (January 31) but a quick call to Sharon Jepson at 407-3958 (day) or 871-3782 (evening) will buy you enough time to get your check in the mail and ensure that you don't miss a single issue of *The Exponent* in 1989.

Inside This Issue

From the President's Desk	2
Vice-President's Viewpoint	2
Career Connections	5
Career Management Forum	5
WGB Mentor Program	5
Calendar	6

From the President's Desk . . .

More on new beginnings and life balance issues . . .

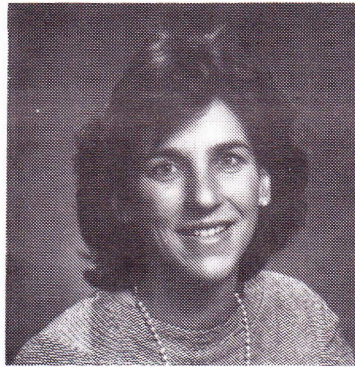
In covering the events leading up to the inauguration of a new President of the United States, the media has poured a lot of energy into portraying our incoming leader as a person with multiple dimensions. The President is not only a statesman, politician and war hero, but he is also a husband, father and grandfather. There is something humane about recognizing the many roles we all play in life and it is, perhaps, in this sense that he speaks about a "kinder and gentler nation".

There is no doubt that each of our members also displays this same kind of personal richness through the variety of roles we play in our daily lives. Not only are we professionals and business executives, but we are also daughters, wives and mothers. How to tap into and draw on this richness represents an exciting challenge for our organization and one we are interested in expanding over this coming year through our programming and newsletter. The UCWBG Board members welcome any thoughts, ideas, and comments you might have on this "life balance" issue or other related issues.

Reaching out to Membership . . .

As mentioned in the January issue of *The Exponent*, the theme for this year is "Reaching out to Membership". One way to reach our existing membership to identify their interests and needs is through the 1989 UCWBG Membership Survey. We will also be distributing evaluation forms after each program/event to obtain direct feedback about the program/event and other ideas or suggestions attendees might have.

continued on page 5



Vice-President's Viewpoint

The Membership Committee of the UCWBG has responsibility for several major activities, not the least of which is publication of the annual membership directory. As most of you know, because of its format, this directory is a valuable tool for networking. We also maintain the membership roster and mailing list for the UCWBG, which includes keeping the GSB Alumni Office up-to-date on new member information and address changes.

In addition to the above, we run several annual membership drives—current member renewals, 190 and XP students, and campus graduates. One of our main objectives in 1989 will be to increase the number of members, especially in the Chicago area. There are many exciting programs and events scheduled for this year which I am sure will attract potential members.

If you know someone who might be interested, why not bring her along to one of our programs? There will be someone from the Membership Committee at each event to provide information and brochures; so if you or your guest have any questions, feel free to stop by our table.

I have worked on the Membership Committee for the past two years and have found it to be both interesting and fun. I look forward to the challenge of serving as vice-president in 1989, my first year as a board member. If anyone is interested in working with me on the Membership Committee this year, please give me a call at 407-3958—there's always plenty to do!

Sharon Jepson
Vice-president, Membership



THE UNIVERSITY OF CHICAGO WOMEN'S BUSINESS GROUP

1989 Board of Directors

	President:	Nancy Bruggemeyer-Gunder 433-3806		
President-Elect:	Lorena Blonsky 726-1841		VP-Internal Communications:	Charlene Paulus Oaks 280-9091
VP-Administration:	Shirley Beasley 858-4709		VP-Career Management:	Kitty Voss 864-5052
VP-Finance:	Susan Larson 376-9780		VP-Chapters:	Pamela Ewing 280-8120
VP-Programs:	Adrienne Harvitt 726-4501		Immediate Past President:	Kathleen Holoubek 875-1728
VP-Membership:	Sharon Jepson 407-3958		Director:	Diana Carpenter 998-2964
VP-Public Relations:	Idell Feldstein 262-7944		Director:	Ann Rosenbaum 836-7572

Career Planning Seminar Registration Form

Name _____
 Address _____
 City _____ State _____ Zip _____
 Daytime Phone _____
 UCWBG Members _____ Guests _____
 (Priority for registration will be given to UCWBG members)

I have enclosed a check payable to the UCWBG in the amount of _____.
 I am registering for the following seminars: (Please check the sessions and register for all the sessions you plan to attend at one time.)

Part I - Career Assessment (\$60 per person, limited to 15 per day)

Please bring your resume and other relevant materials.
 Put a 1 and a 2 next to your first and second choices.

February 25, 1989 _____
 March 4, 1989 _____

Part II - Job Sourcing: Where are the Opportunities? (\$35 per person)

March 11, 1989 _____

Part III - The Interview Process (\$35 per person)

March 25, 1989 _____

Return to: Donna Seltin, 1136 Ontario Street, Oak Park, IL 60302 (312) 843-1262

WBG MENTOR PROGRAM

send to: _____
 UCWBG _____
 c / o Diana Carpenter _____
 Apt. 403, 1551 Ashland St. _____
 Des Plaines, IL 60016 _____

Name _____
 Daytime Phone _____
 Evening Phone _____
 Employer _____
 Position _____
 Other interests, experience _____

You CAN Make a Difference!

Sign up for as many committees as you want.

- Administration _____
- Finance _____
- Programs _____
- Membership _____
- Public Relations _____
- Internal Communications _____
- Career Management _____
- Chapters _____
- Special Projects _____
- Where needed _____

Name _____
 Address _____
 Phone: (day) _____
 (evening) _____
 Send to Diana Carpenter
 Apt. 403, 1551 Ashland Avenue
 Des Plaines, IL 60016

CAREER CONNECTIONS

Please let us know if you have **moved** or **made any changes** in your career lately. Send information to CAREER CONNECTIONS, Kitty Voss, 801 Hinman, Evanston, IL 60202, or call (312) 864-5052, with the information.

NAME _____ CLASS YEAR _____ CAMPUS
 DAY PHONE _____ 190 XP _____

TYPE OF CHANGE:
 (Include old and new title, company, and other background information.)

- CHANGED JOBS
- APPOINTED TO BOARD OF DIRECTORS
- OTHER (moved, started a new company, family, etc.)
- PROMOTED
- RECEIVED AWARD/RECOGNITION

Please indicate any changes to home or business address/phone. Write "Do Not Publish" next to any information you do not wish to appear in Career Connections.

HOME _____ PHONE _____
 WORK _____ PHONE _____

**This page intentionally left blank
so you can clip all the coupons on the
reverse side**

Career Management Forum

Do you know . . .

what happens to your Career Connections when you send it in to Kitty Voss? The information is used by up to five UCWBG committees and the GSB to update records and spread the news about you!

Kitty Voss from the Career Management Committee sends promotion and job change information to Membership, Public Relations, Internal Communications (*The Exponent*) and the

GSB to update records and notify the print media of your new position.

If you've moved, Membership, Internal Communications, Chapters (if you move from one to another) and the GSB are all notified automatically. Remember, if you do not want some information published in *The Exponent*, write DNP next to it when you write to Kitty.

This year we have the opportunity to use pictures (black and white) in

press releases to the *Sun Times* announcing job changes and promotions. If you would like such coverage, please include a black and white photo with your Career Connection coupon. (Photo cannot be returned.)

Also, *Crain's Chicago Business* is no longer using job change and promotion information submitted by UCWBG. They would prefer to have the announcement on your company's letterhead.

President, continued from page 1

We are also searching for ideas/ways to make existing members feel "more comfortable" attending events where they may not know anyone.

In addition to reaching our existing members, we will also be focusing on ways to increase the number of new members. Two suggestions from Board members that we will be following up with are a "telemarketing campaign" and working with the campus women's group. Volunteers on any of these projects are welcome.


GSB Support . . .

On behalf of the UCWBG, I would like to thank the GSB Alumni Office for their continued support of our group.

Nancy Bruggemeyer-Gunder
1989 President




Correction

Yes, there were gremlins in our keyboard when we typed the new University of Chicago Women's Business Group Address on the coupon insert in January. We got it right on pages 3 and 8, but we goofed on the insert page. The correct address is 630 Green Bay Road, P. O. Box 350, Kenilworth, IL 60043. Sorry for the confusion. 

Campus Women's Business Group Invites You to Share Your Experience

The Women's Business Group on campus is eager to form more ties with our alumni group. There are fewer women attending the GSB now than in years past and more students now have work experience. Diana Carpenter is coordinating a WBG Mentor Program between our group and the campus group to help students explore job options and plan a career strategy.

Alumni and students will be matched according to interests. An initial meeting is planned for late March.

If you would like to participate in this program, please call Diana at (312) 998-2964 (24-hour number). Be prepared to leave your name, day and evening phone numbers, employer's name, your position, as well as your other interests and experience. Don't like machines? . . . send Diana the coupon on page 3. 

CAREER CONNECTIONS

Barbara Carye, '88, Campus: has moved. Her new address is 1230 North State Street, Apt. 27A, Chicago, IL 60610, (312) 266-7320.

Sandra A. Miller, '86, 190: has joined Hewitt Associates as a Consultant in the Sales Compensation Group. She can be reached at Hewitt Associates, 100 Half Day Road, Lincolnshire, IL 60015, (312) 295-5000. *Congratulations, Sandra!*

Interested in helping with *The Exponent*? Contact Charlene Paulus Oaks, 1340 North Dearborn #11-D, Chicago, IL 60610, (312) 280-9091.

Calendar

February

- 10 MBA+
Operations Update
190 East Delaware, 9 am-noon/1:30-4 pm
Contact: Sara Bittinger 702-7572
- 15 *The Exponent* deadline
- 17 MBA+
Marketing Update
190 East Delaware, 9 am-noon/1:30-4 pm
Contact: Sara Bittinger 702-7572
- 18 UCWBG Board Meeting
- 22 Box Lunch 12-1:30 pm
Speaker: Katherine Schipper
1 First National Plaza, Suite 2718
See article, page 1
- 24 MBA+
Finance Update
190 East Delaware, 9 am-noon/1:30-4 pm
Contact: Sara Bittinger 702-7572
- 25 **UCWBG Career Planning Program Series
Part I - Career Assessment
190 East Delaware; 8:30 am-3 pm**

- 27 MYOB Seminar
"The Wide Reach of Barter"
Panel Discussion with Peter Kennedy of Quality Flow and
Keith Greenwald of Exchange Parts of America
Contact: Debbie Harrold 702-7724

March

- 3 MBA+
Industrial Relations Update
190 East Delaware, 9 am-noon/1:30-4 pm
Contact: Sara Bittinger 702-7572
- 4 **UCWBG Career Planning Program Series
Part I - Career Assessment
190 East Delaware; 8:30 am-3 pm**
- 11 **UCWBG Career Planning Program Series
Part II - Job Sourcing
190 East Delaware; 8:30 am-12 pm**
- 15 *The Exponent* deadline
- 18 UCWBG Board Meeting
- 25 **UCWBG Career Planning Program Series
Part III - The Interview Process
190 East Delaware; 8:30 am-12 pm**

April

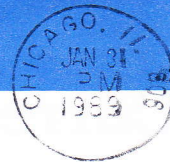
- 11 37th Annual Management Conference
Westin Hotel, 909 N. Michigan
Contact: Sara Bittinger 702-7572
- 14 Black MBA Conference

Send Calendar listings to Jo Anne McCarthy at the
UCWBG address below.



The University of Chicago Women's Business Group

630 Green Bay Road, P.O. Box 350
Kenilworth, Illinois 60043
Address Correction and Forwarding



The Exponent is published monthly by
INTERNAL COMMUNICATIONS COMMITTEE
Address correspondence to:
Charlene Paulus Oaks
1340 North Dearborn #11-D
Chicago, IL 60610

FEBRUARY CONTRIBUTORS:

Diana Carpenter
Sharon Jepson
Kitty Voss
Nancy Gunder
Charlene Oaks