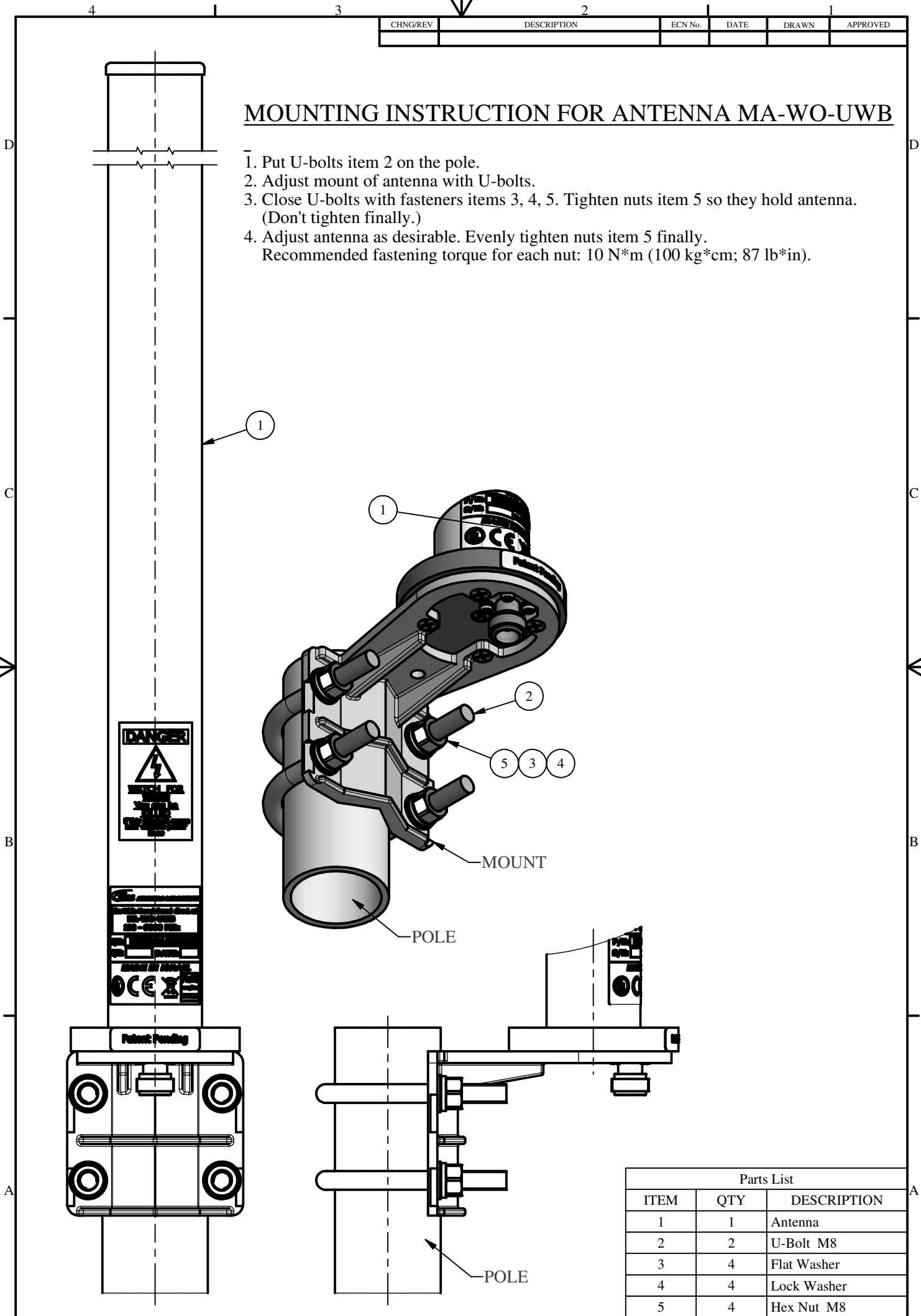


CHNG/REV	DESCRIPTION	ECN No.	DATE	DRAWN	APPROVED

## MOUNTING INSTRUCTION FOR ANTENNA MA-WO-UWB

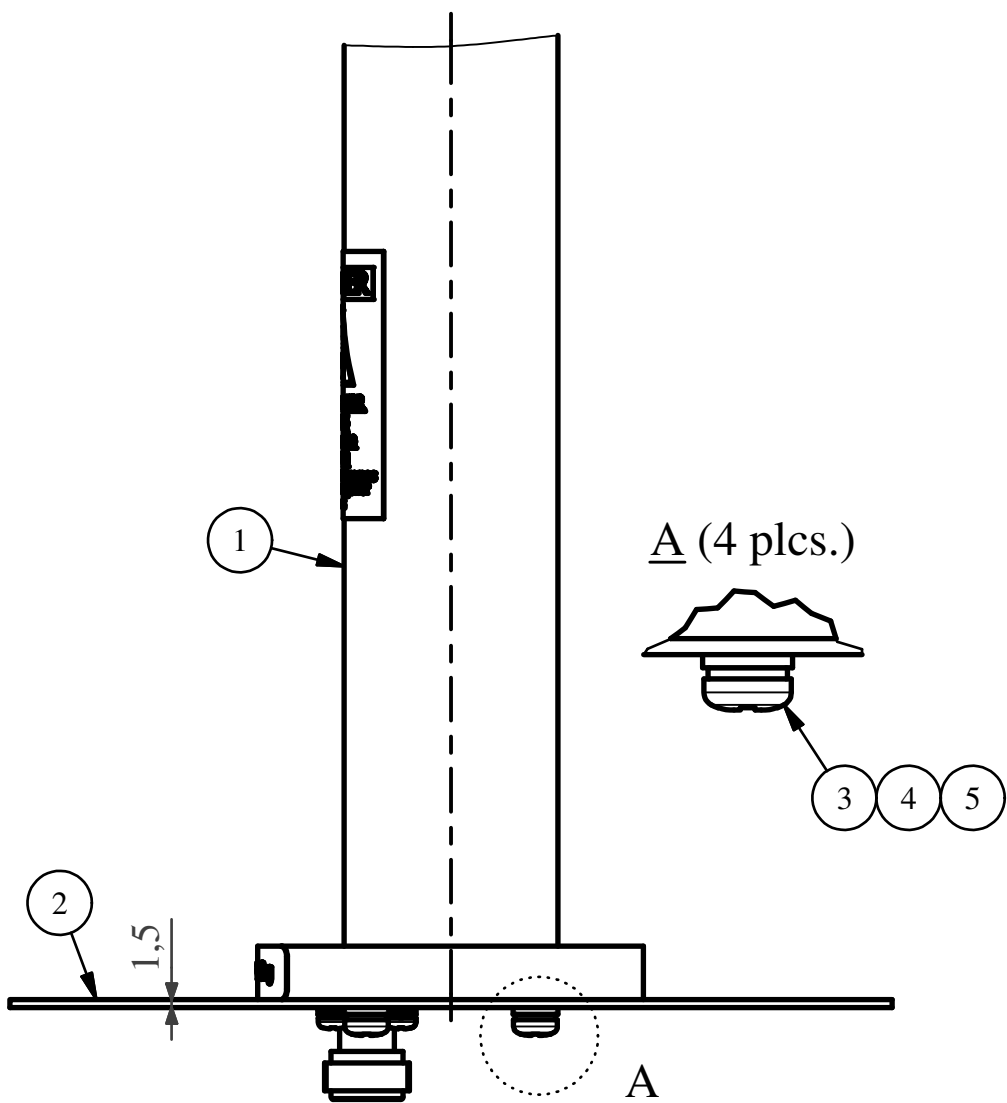
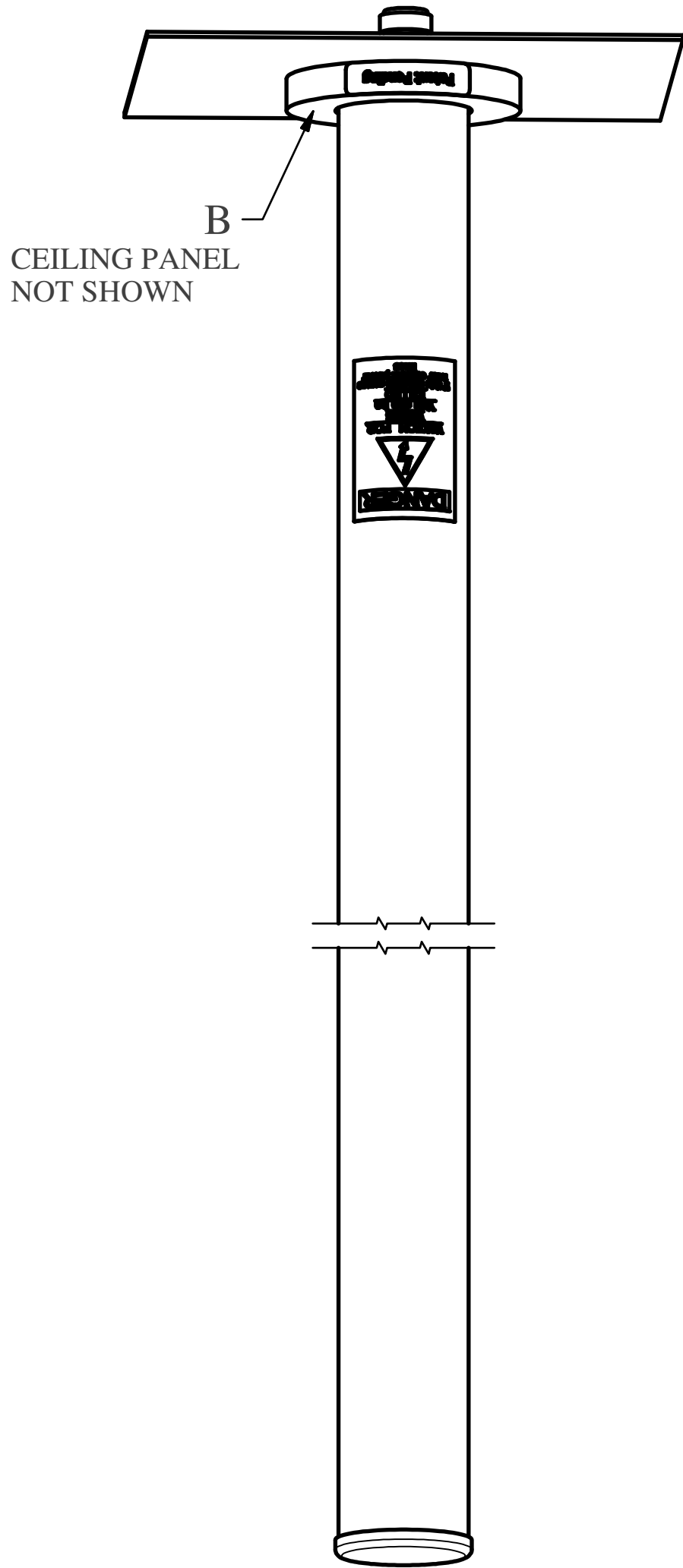
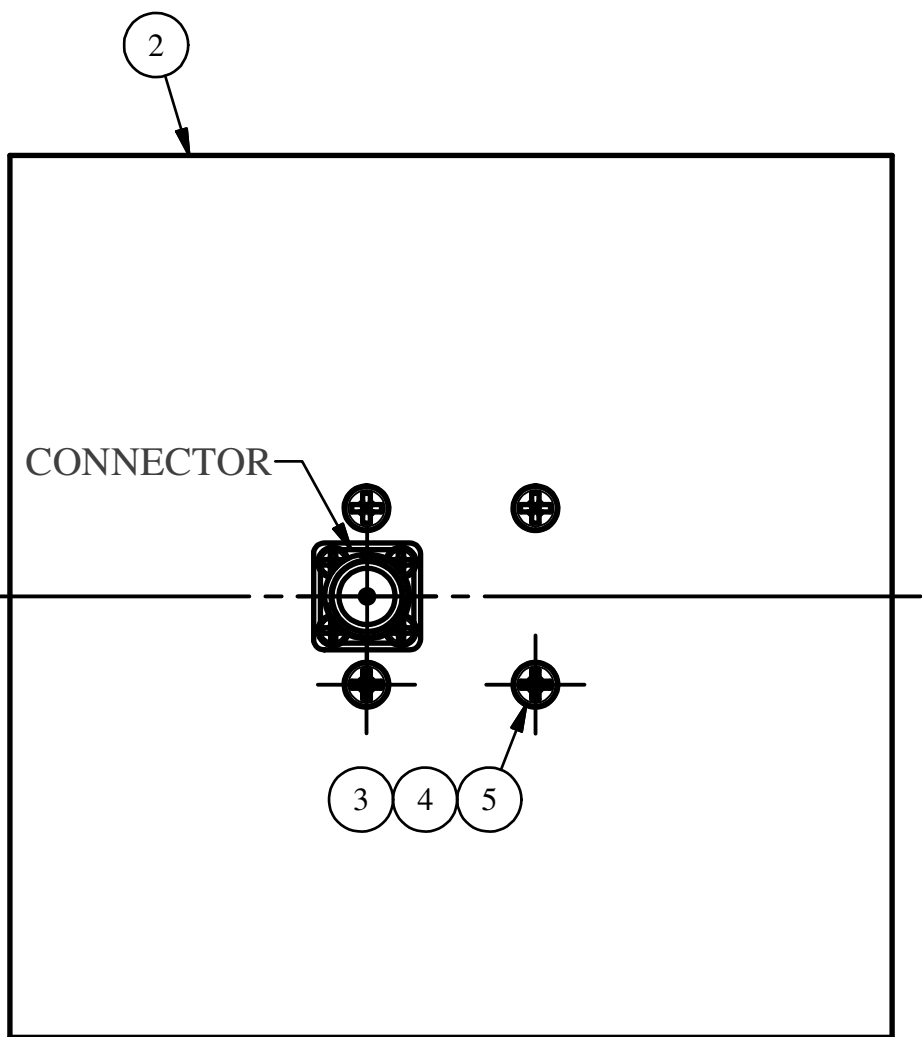
1. Put U-bolts item 2 on the pole.
2. Adjust mount of antenna with U-bolts.
3. Close U-bolts with fasteners items 3, 4, 5. Tighten nuts item 5 so they hold antenna. (Don't tighten finally.)
4. Adjust antenna as desirable. Evenly tighten nuts item 5 finally.  
Recommended fastening torque for each nut: 10 N\*m (100 kg\*cm; 87 lb\*in).



CHNG/REV	DESCRIPTION	ECN No.	DATE	DRAWN	APPROVED

## MOUNTING INSTRUCTION FOR ANTENNA MA-WO-UWB WITH GROUND PLANE MG-165; MG-370; MG-400

1. Adjust ground plate item 2 with base of antenna so connector passes thru window in ground plate. Close ground plate to antenna with items 3, 4, 5 (4 plcs.).
2. Make hole  $\varnothing 45...50\text{mm}$  in ceiling panel & insert antenna towards down so surface 'B' lays on ceiling panel.

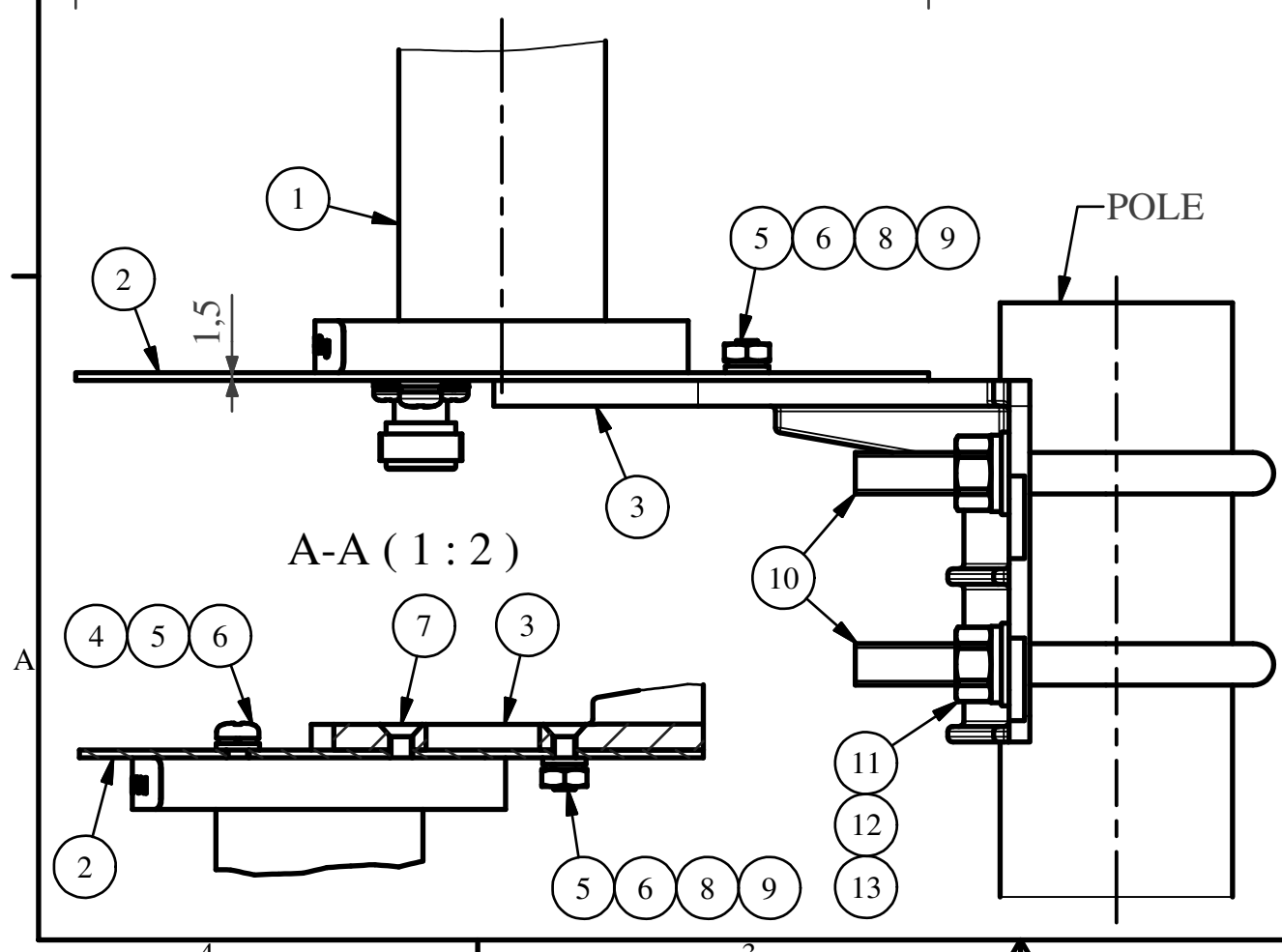
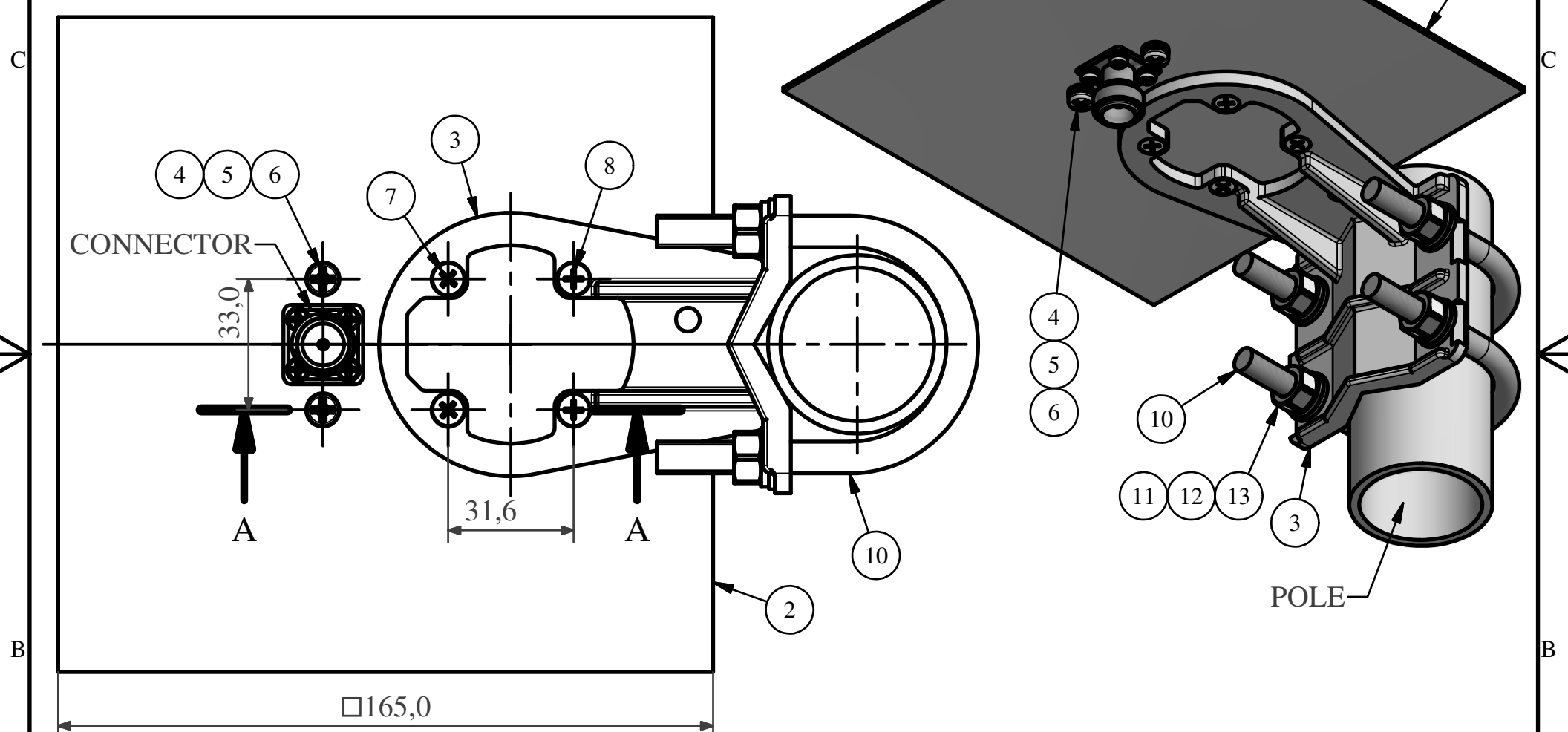


Parts List		
ITEM	QTY	DESCRIPTION
1	1	Antenna
2	1	Ground plane to MG-165
3	4	NC #8 x 5/16" Philips Pan Head Screw
4	4	Flat Washer #8
5	4	Spring washer #8

CHNG/REV	DESCRIPTION	ECN No.	DATE	DRAWN	APPROVED

## MOUNTING INSTRUCTION FOR ANTENNA MA-WO-UWB WITH GROUND PLANE MG-165 & MOUNT

1. Remove mount item 3 from antenna. (Screws of mount won't be used any more.)
2. Adjust ground plate item 2 with base of antenna so connector passes thru window in ground plate. Close ground plate to antenna with items 4, 5, 6 (2 plcs.).
3. Connect mount item 3 to base of antenna with items 7 (locktite recommended) & to ground plate with items 5, 6, 8, 9 (see section 'A-A').
4. Put U-bolts item 10 on the pole. Adjust mount item 3 with U-bolts.
5. Close U-bolts with fasteners items 11, 12, 13. Tighten nuts item 11 so they hold antenna. (Don't tighten finally.)
6. Adjust antenna as desirable. Evenly tighten nuts item 11 finally.  
Recommended fastening torque for each nut:  
10 N\*m (100 kg\*cm; 87 lb\*in).



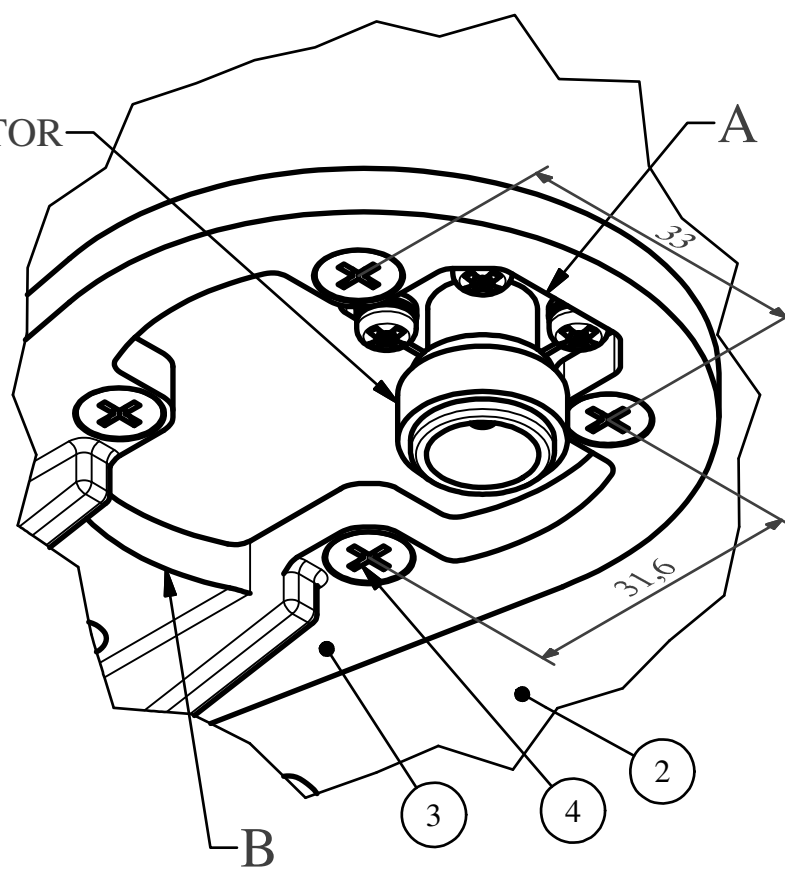
Parts List		
ITEM	QTY	DESCRIPTION
1	1	Antenna
2	1	Ground plate
3	1	MOUNT
4	2	NC #8 x 5/16" Philips Pan Head Screw
5	4	Flat Washer #8
6	4	Lock Washer #8
7	2	NC #8 x 3/8" Philips Flat Head Screw
8	2	NC #8 x 1/2" Philips Flat Head Screw
9	2	Hex Nut NC #8
10	2	U-Bolt M8
11	4	Hex Nut M8
12	4	Flat Washer for M8
13	4	Lock Washer for M8

CHNG/REV	DESCRIPTION	ECN No.	DATE	DRAWN	APPROVED

## MOUNTING INSTRUCTION FOR ANTENNA MA-WO-UWB WITH GROUND PLANE MG-370; MG-400 & MOUNT

1. Remove mount item 3 from antenna. (Screws of mount won't be used any more.)
2. Adjust ground plate item 2 with base of antenna so connector passes thru window in ground plate. Close mount & ground plate to antenna with items 4 (locktite recommended). (FIG. 1).
3. Put U-bolts item 5 on the pole. Adjust mount item 3 with U-bolts (FIG. 2).
4. Close U-bolts with fasteners items 6, 7, 8. Tighten nuts item 6 so they hold antenna. (Don't tighten finally.)
5. Adjust antenna as desirable. Evenly tighten nuts item 6 finally.  
Recommended fastening torque for each nut:  
10 N\*m (100 kg\*cm; 87 lb\*in).

CONNECTOR

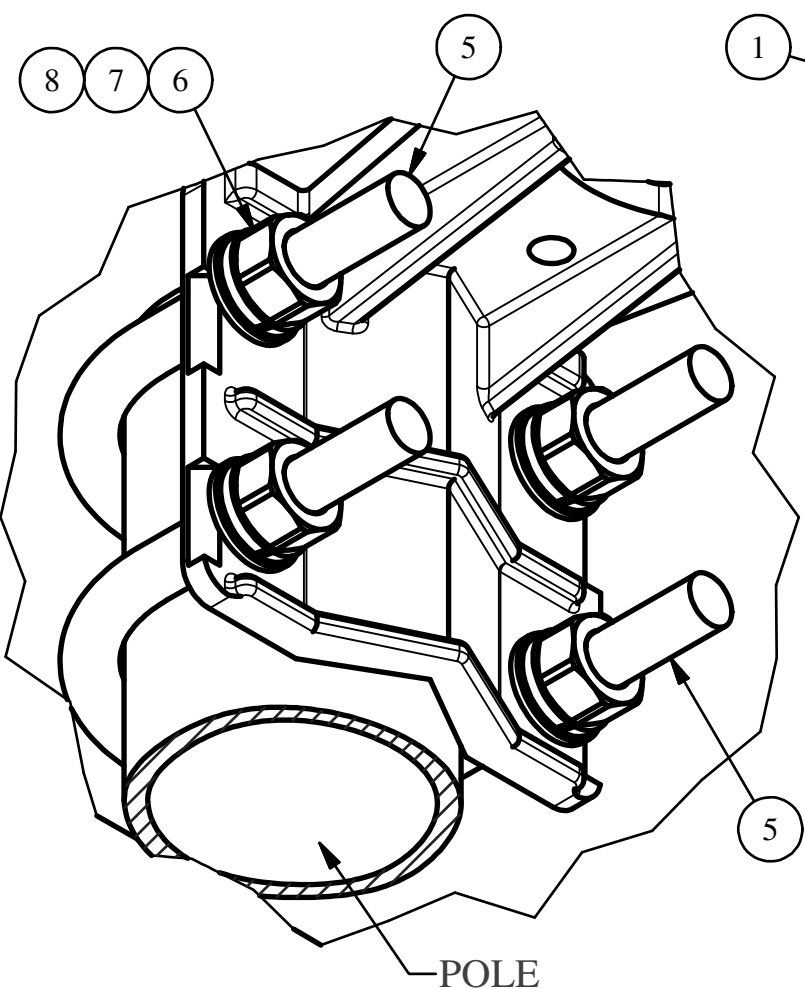


### PAY ATTENTION

If edge A of mount is near connector - connector will be farther from pole.

If edge B of mount is near connector - connector will be closer to pole.

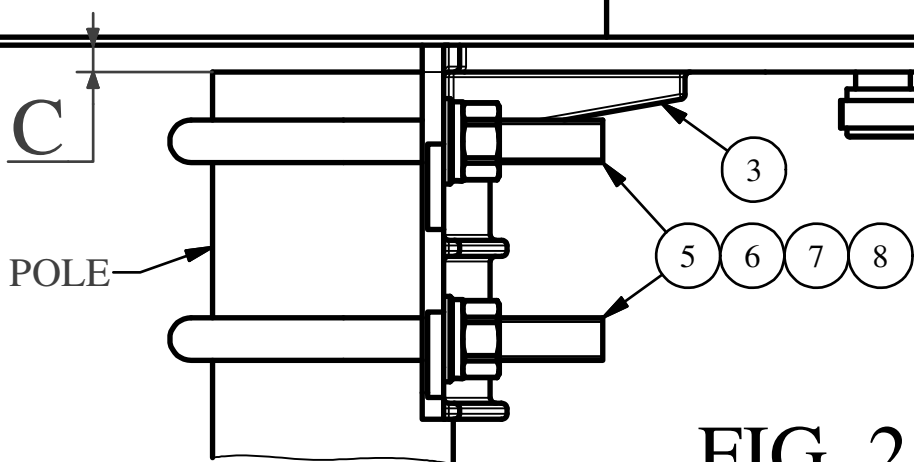
**FIG. 1**



### PAY ATTENTION

Space C between ground plate item 2 & pole depends on U-bolts' item 5 position on pole.

Space C may be 0.



**FIG. 2**

Parts List		
ITEM	QTY	DESCRIPTION
1	1	Antenna
2	1	Ground plate
3	1	MOUNT
4	4	NC #8 x 3/8" Philips Flat Head Screw
5	2	U-Bolt M8
6	4	Hex Nut M8
7	4	Flat Washer for M8
8	4	Lock Washer for M8