
The logo for PORTMONSTER, featuring the word in a stylized, red, blocky font. The letters are outlined, giving it a digital or pixelated appearance. A faint, light blue watermark of a hand cursor is visible behind the text.

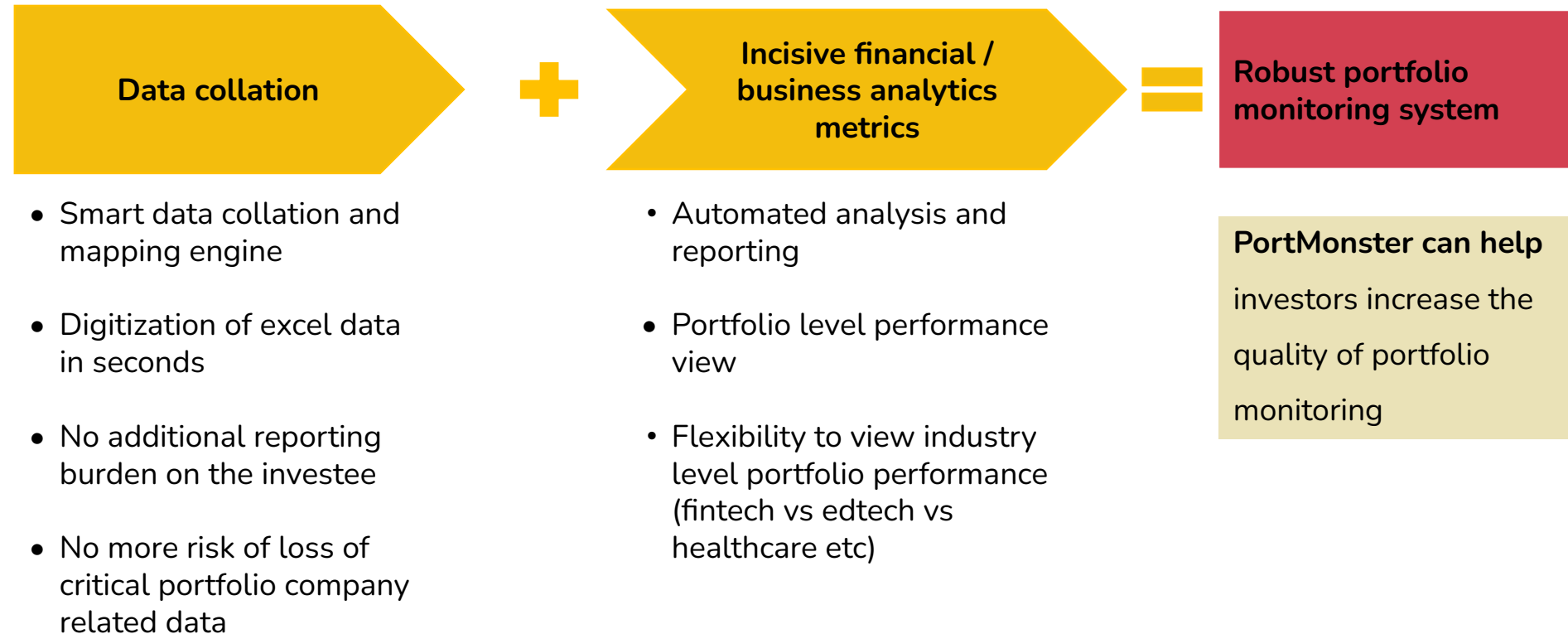
*The Comprehensive Portfolio Monitoring
Tool For Investment Firms*

- An investor's real job begins after investment – with portfolio monitoring
- Portfolio monitoring entails periodic reviews of the investee's financial / business health to ensure that the investee firm is on the right growth trajectory
- Current portfolio monitoring processes are not robust enough to adequately capture investee's business risk and protect the investment made
- PortMonster can be the vital link for seamless portfolio monitoring for PE / VC funds

- Currently, portfolio monitoring processes are time and manpower intensive
- Data collection from investee companies is a pain point while the data, thus collected, is unstructured
- The current monitoring process runs the risk of unintended oversight owing to the sheer volume of unstructured data
- Since a lot of time is spent on structuring data received from portfolio companies, bandwidth available for analysis is reduced

PortMonster's Value Proposition

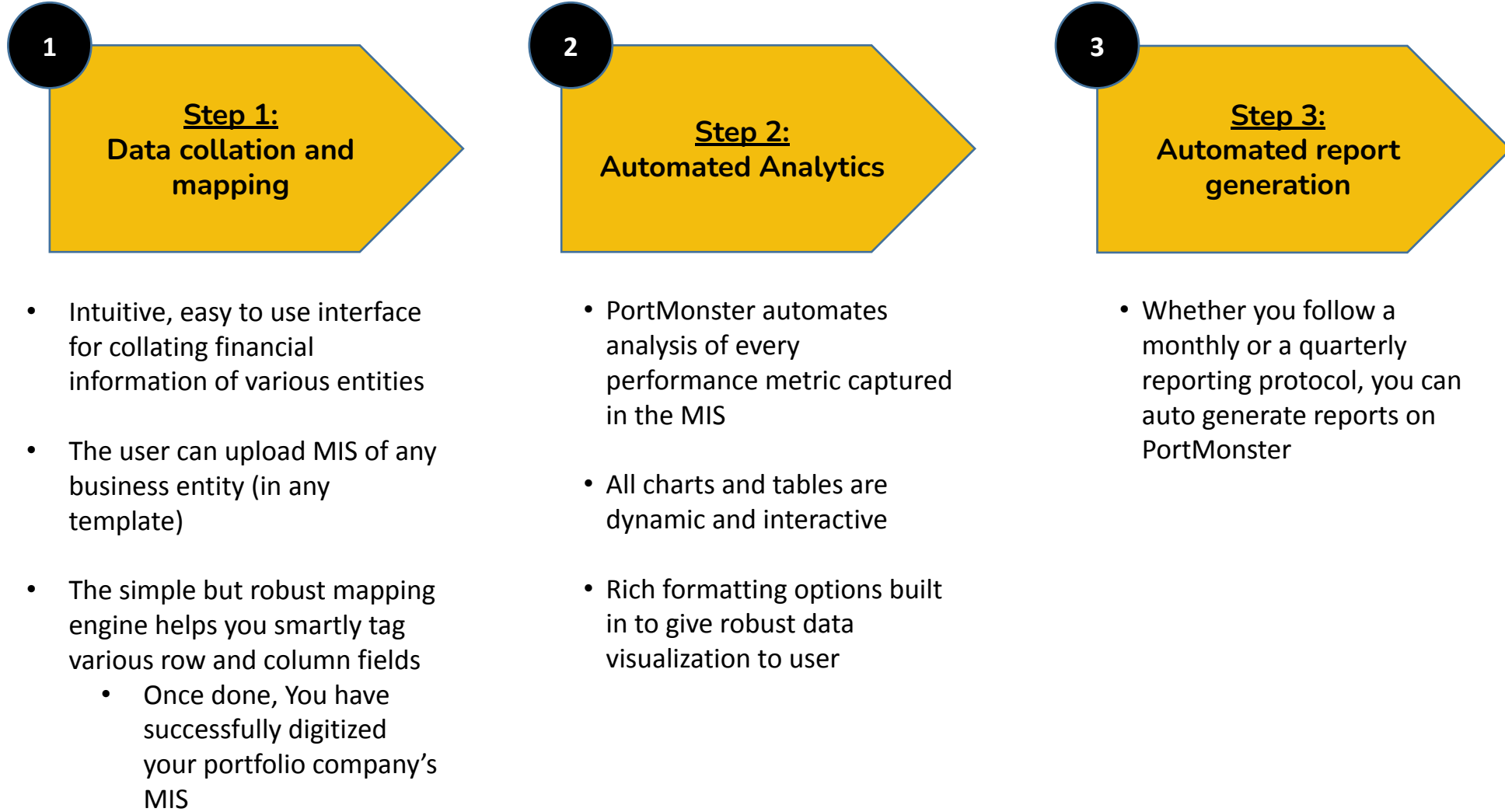
One platform for all portfolio company data



Note:

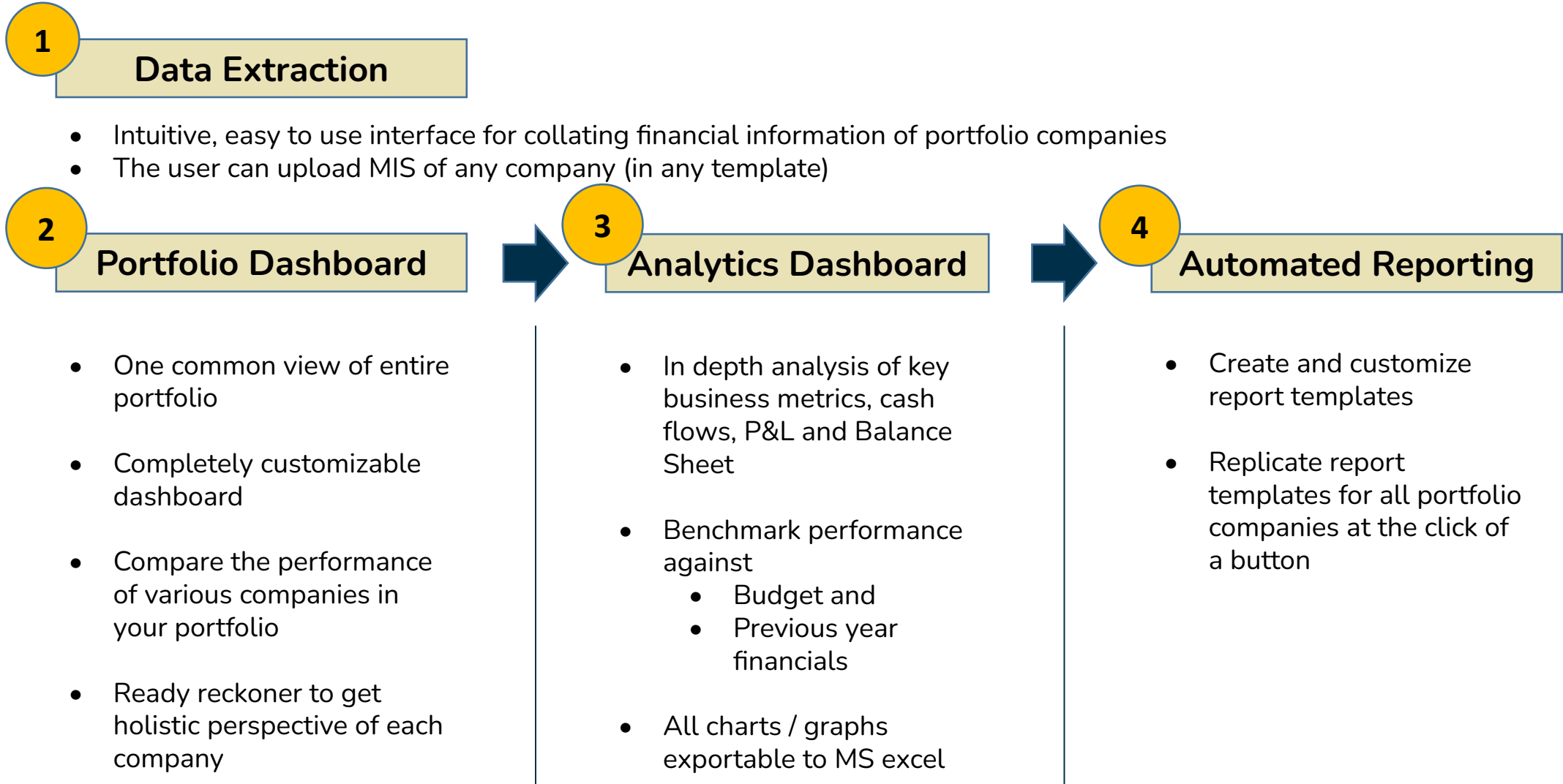
1. *PortMonster doesn't require any change in your existing MIS processes / protocols followed with your portfolio companies*
2. *No involvement of portfolio companies necessary to successfully implement and use PortMonster*
3. *No setup time or cost involved; no integrations necessary with native systems*

How does PortMonster work?



Product Walkthrough

PortMonster has 4 key sections✓



Data Extraction

Extraction of data from source
MIS to PortMonster's database

PORTMONSTER

PORTMONSTER

Company
Company 7

Start Date
1 April 2019

End Date
30 April 2019

Translate

Save Data Finalize

Row Destination Metrics

ungrouped metrics

| | |
|------------------------------------|--|
| Revenue | Income stmt - Sales revenue |
| Discount recieved | Income stmt - Discount recieved |
| Interest income | Income stmt - Interest income |
| Total Revenue | Income stmt - Total Revenue |
| COGS | Income stmt - COGS |
| Gross Profit | Income stmt - Gross Profit |
| Gross Margin% | Income stmt - Gross Margin% |
| Employee Cost | Income stmt - Employee Cost |
| Professional & Consultancy Charges | Income stmt - Professional & Consultancy Charges |

Area Select Prefix Row Header Postfix Bulk Metrics Prefix Col Header Postfix Mapping

MIS Income stmt Dep Caluculation Sheet1 Sheet2 Cashflow plan Sales productivity exp st

Source Data

| | Apr-19 |
|-------------------|------------|
| Sales revenue | 40,279,238 |
| Discount recieved | 564,087 |
| Interest income | 2,065,248 |
| Total Revenue | 42,908,572 |
| COGS | |

PORTMONSTER

Home

Settings

Portfolio

Reports

Analytics

Documents

Documents

View Dashboard Metrics

Portfolio Dashboard

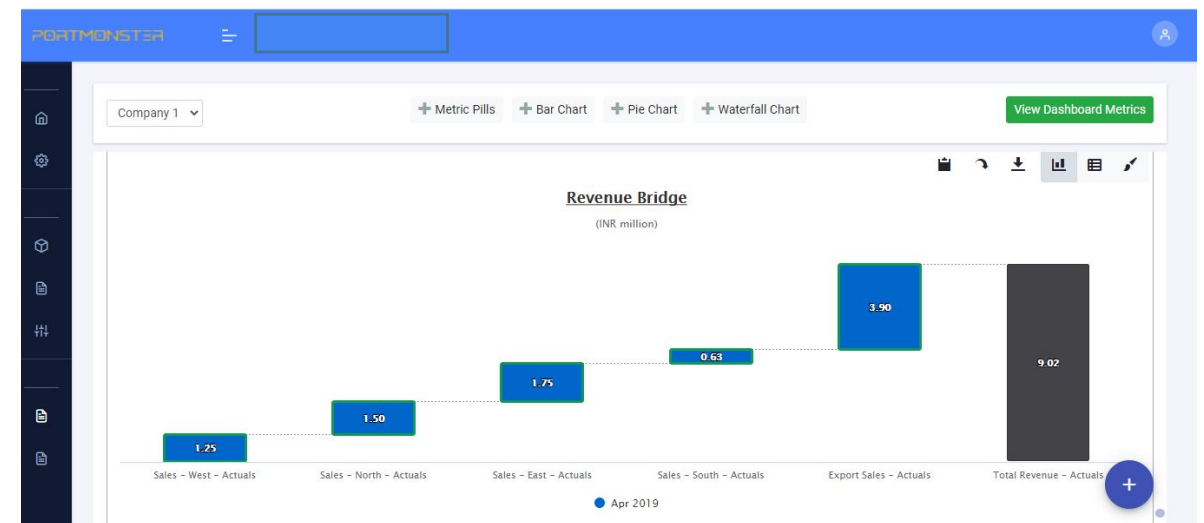
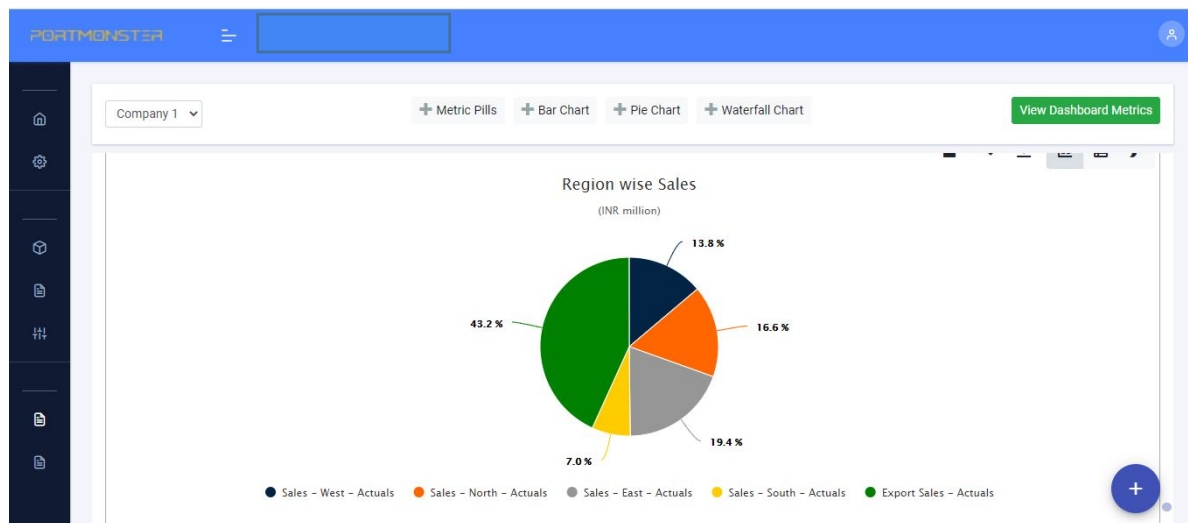
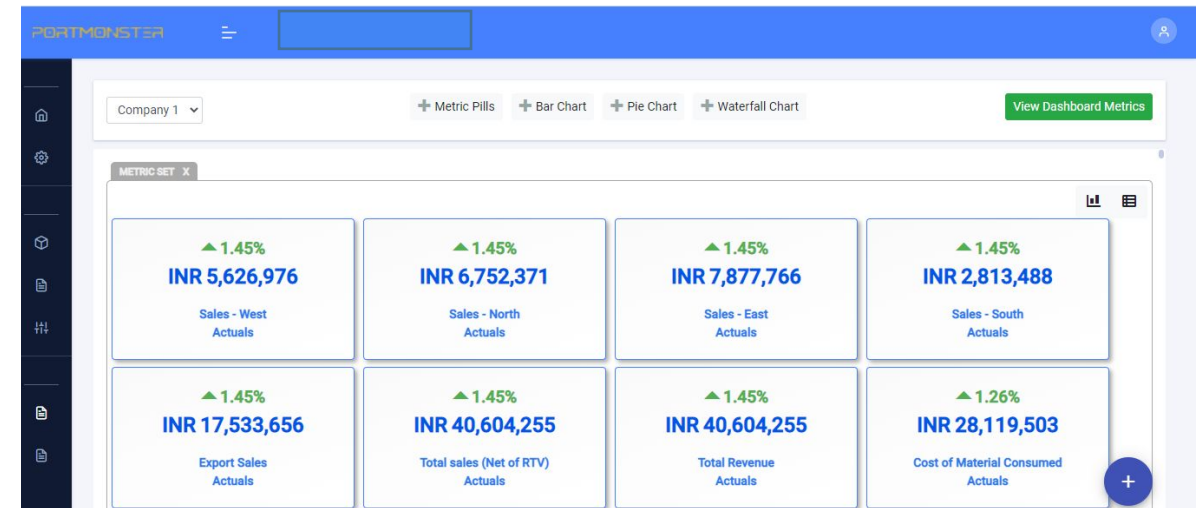
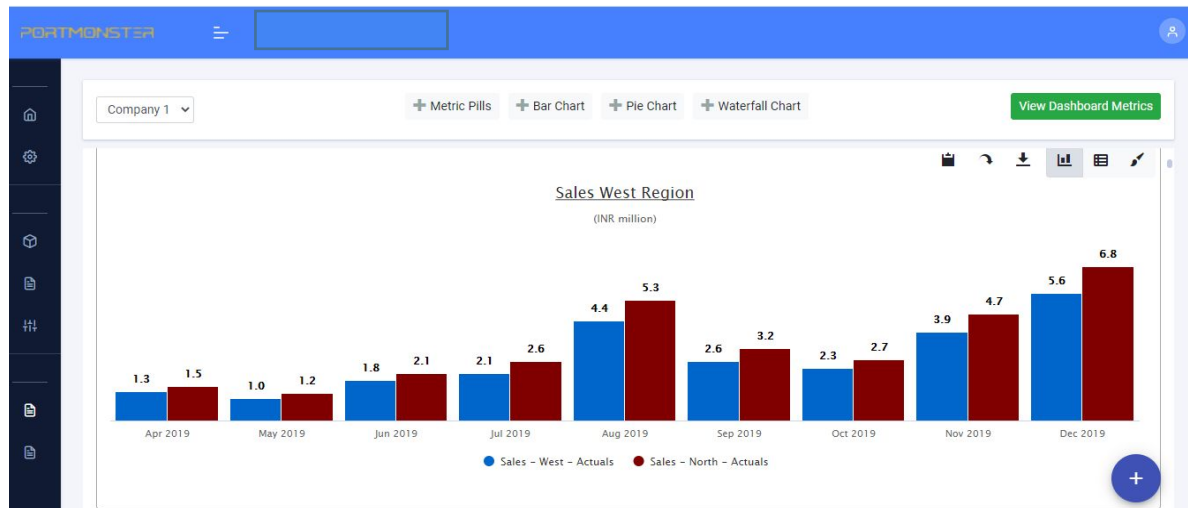
Dashboard Report

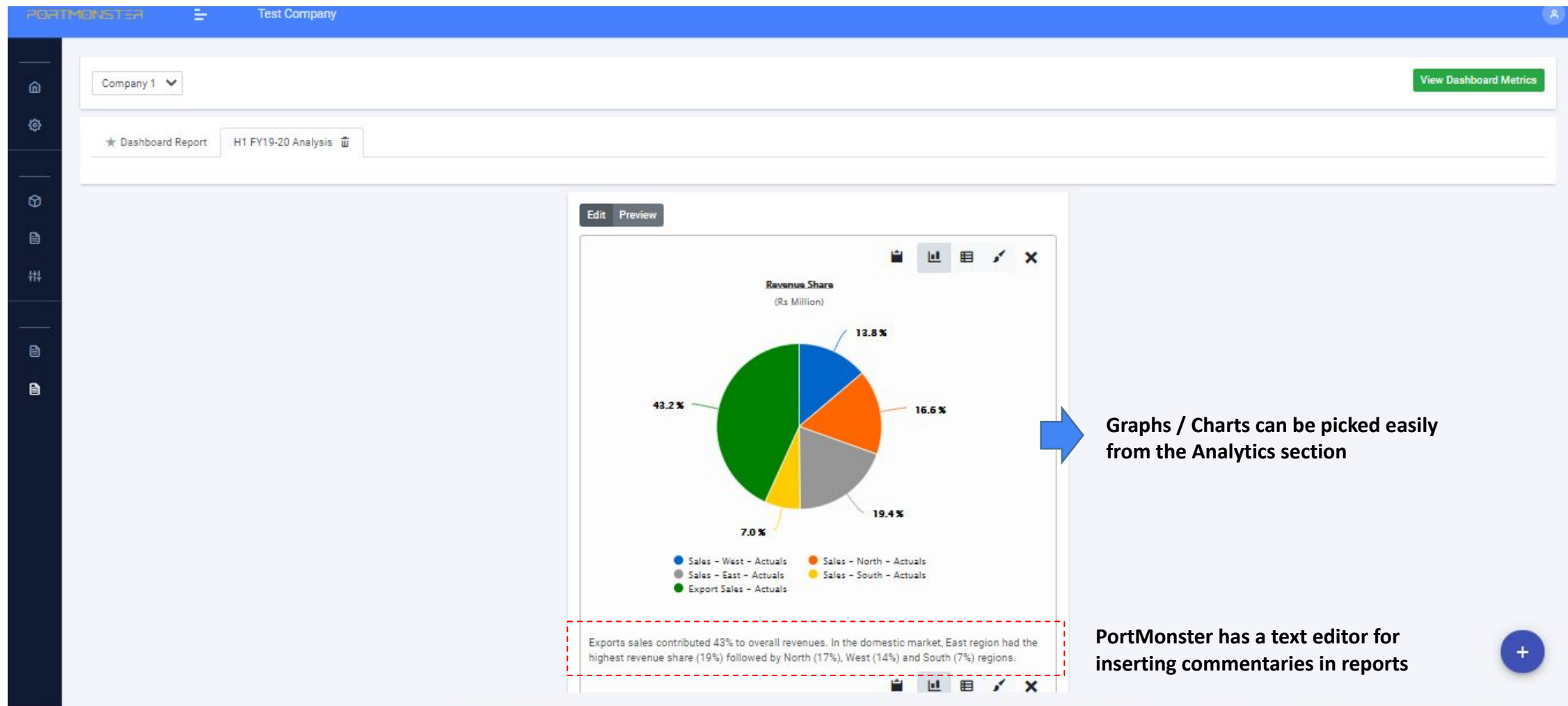
| Company | Period | Revenue (million) | Gross Profit (million) | Gross Margin | EBITDA (million) | PBT (million) | Status |
|-----------|------------------------|---------------------------------|-----------------------------|--------------------------|--------------------------------|--------------------------------|--------|
| Company 1 | 01 Dec 19 to 31 Dec 19 | INR 121.81 ▲ 1.45% | INR 0 ▲ 1.54% | 0% ▲ | INR 3.16 ▲ -1.53% | INR 3.16 ▲ -1.53% | Green |
| Company 5 | 01 Sep 19 to 30 Sep 19 | INR 38.81 ▲ 1.08% | INR 19 ▼ 0.94% | 49% ▼ 0.87% | INR 4.67 ▼ 0.75% | INR 3.65 ▼ 0.75% | Red |
| Company 6 | 01 Jul 19 to 31 Jul 19 | INR 44.87 ▼ 0.99% | INR 22.76 ▼ 1% | 51% ▲ 1.01% | INR 5.76 ▼ 0.66% | INR 4.5 ▼ 0.87% | Red |

Unused Metrics

All dashboard metrics have been assigned to the view.

+





Thank you
