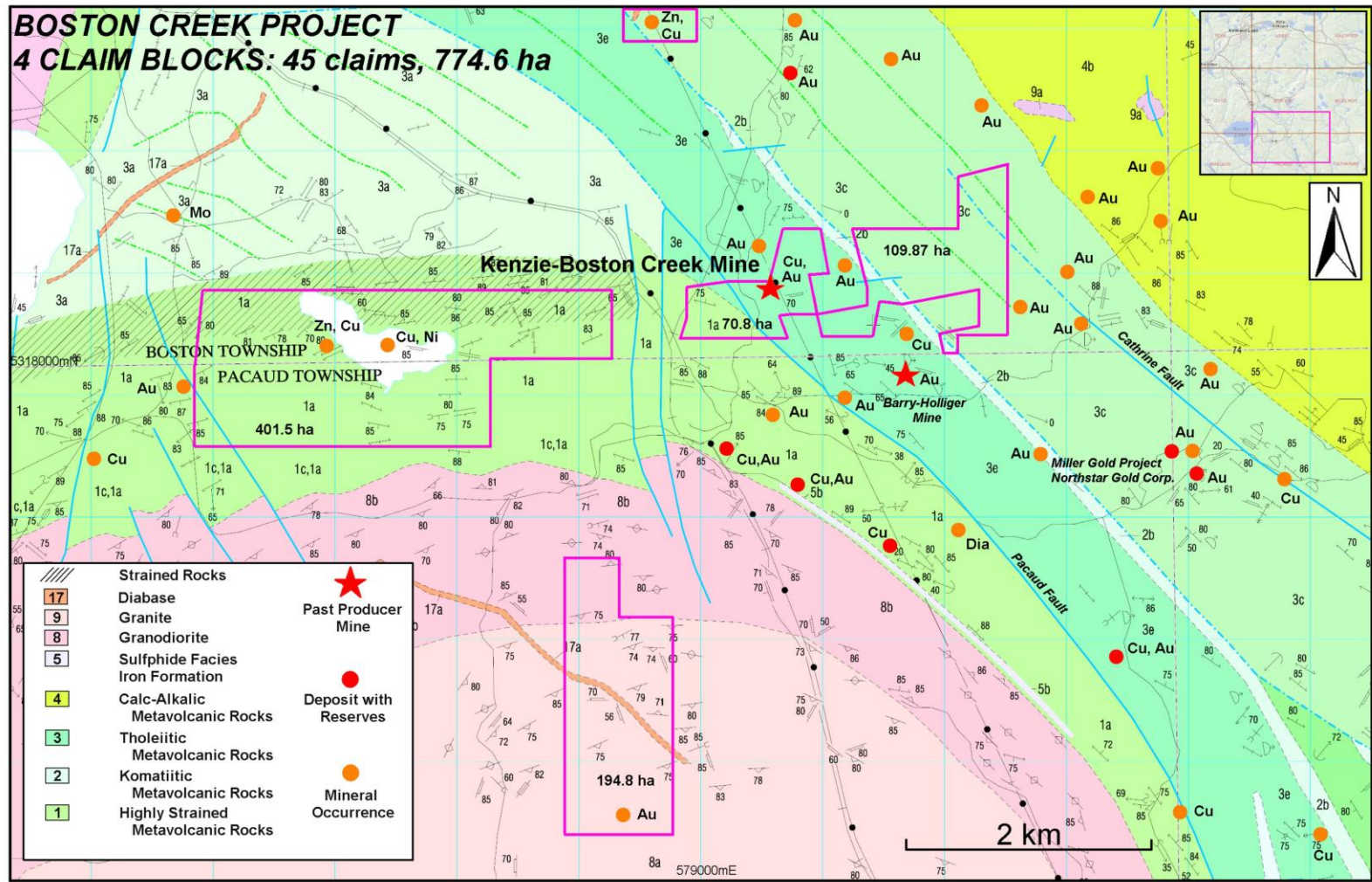


# Boston Creek Project: Au and “Critical Minerals” Properties



- 4 claim blocks totalling 774.6 ha
- Kenzie-Boston Creek: Historic assays of chlorite rich quartz are reported to range 1.21 to 1.45 oz/ton Au (41.7 to 50 g/t)
- Quartz boulder assaying 5.04 g/t Au discovered 170m NE of Kenzie Shaft
- Smith Lake: Historic assay of No. 3 quartz vein contained 1.46% Cu, 1.50% Zn, 0.18 oz./ton Au and 0.84 oz./ton Ag; Historic drill hole under Smith Lake into serpentized peridotite, lamprophyre dike, and syenite dikes produced 0.06% Cu and 0.10% Ni
- Round Lake: Historic values reported from the prospect of 0.324 oz/t Au and 2.4 oz/t Ag. The property also covers potential diamond bearing lamprophyre pipes
- Montario Prospect: Recent sampling has returned 0.123% Cu and 0.235% Zn from a magnetite-sulphide iron formation



Robert Dillman P.Geo. 519-264-9278 or 226-378-3793 [rjdexplorations@gmail.com](mailto:rjdexplorations@gmail.com)

Jim Renaud P.Geo. 519-473-3766 or 519-520-0535 [rgc@execulink.com](mailto:rgc@execulink.com)



# Kenzie - Boston Creek Mine Boston Township Au-Ag-Cu

New Discovery  
▲ 5.04 g/t Au

Lineament

<span style="color: red;">●</span>	Rock Sample Site
	Shaft
	Trench, pit
	Muck Pile
<span style="color: red;">▲</span>	Boulder
	Electric Transmission Line
	Transmission Line Clearing
	Trial
	Claim Cell Boundary

