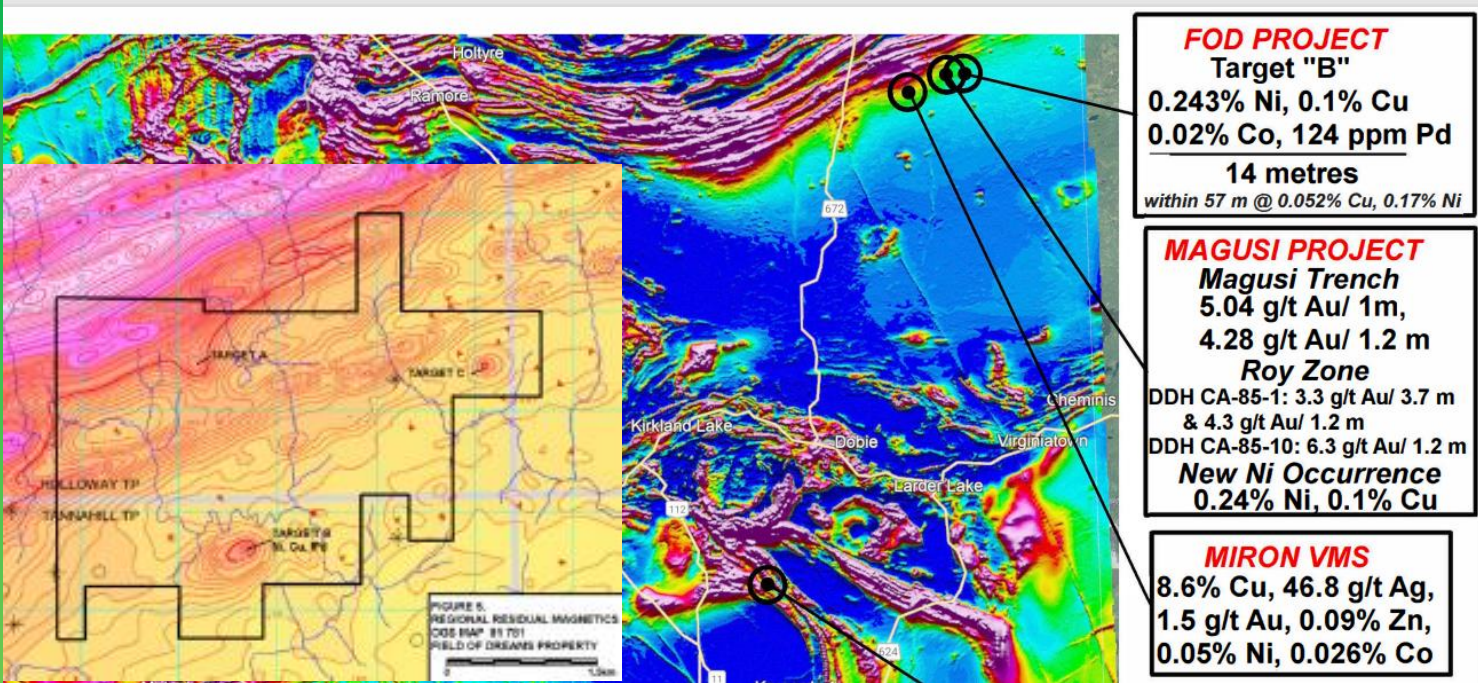


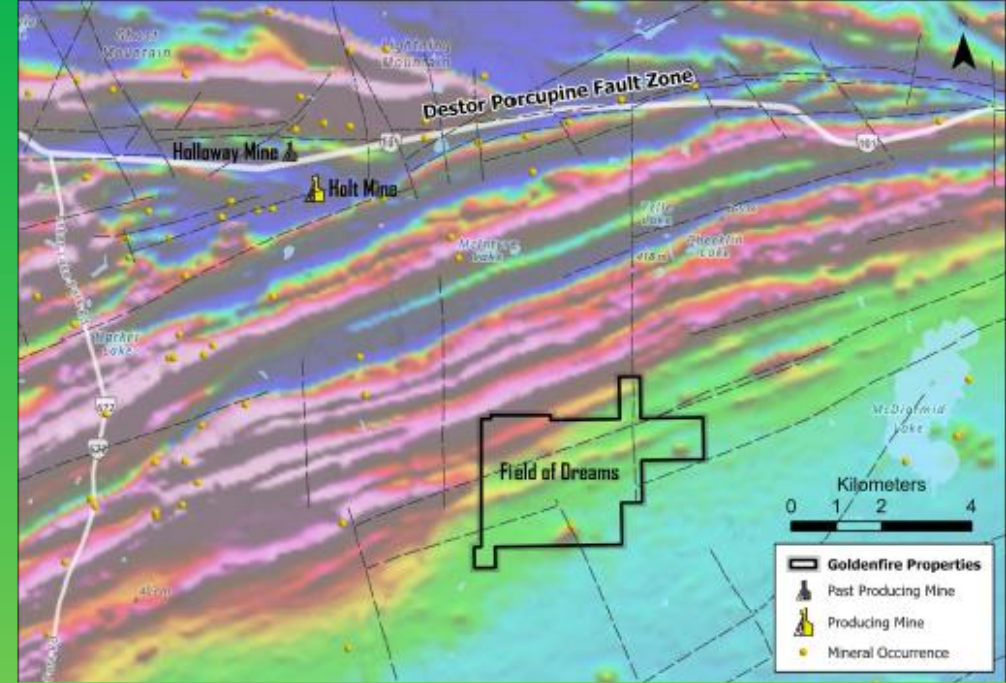
Field of Dreams (FOD) “Critical Minerals” Project



FOD PROJECT
Target "B"
 0.243% Ni, 0.1% Cu
 0.02% Co, 124 ppm Pd
14 metres
 within 57 m @ 0.052% Cu, 0.17% Ni

MAGUSI PROJECT
Magusi Trench
 5.04 g/t Au/ 1m,
 4.28 g/t Au/ 1.2 m
Roy Zone
 DDH CA-85-1: 3.3 g/t Au/ 3.7 m
 & 4.3 g/t Au/ 1.2 m
 DDH CA-85-10: 6.3 g/t Au/ 1.2 m
New Ni Occurrence
 0.24% Ni, 0.1% Cu

MIRON VMS
 8.6% Cu, 46.8 g/t Ag,
 1.5 g/t Au, 0.09% Zn,
 0.05% Ni, 0.026% Co



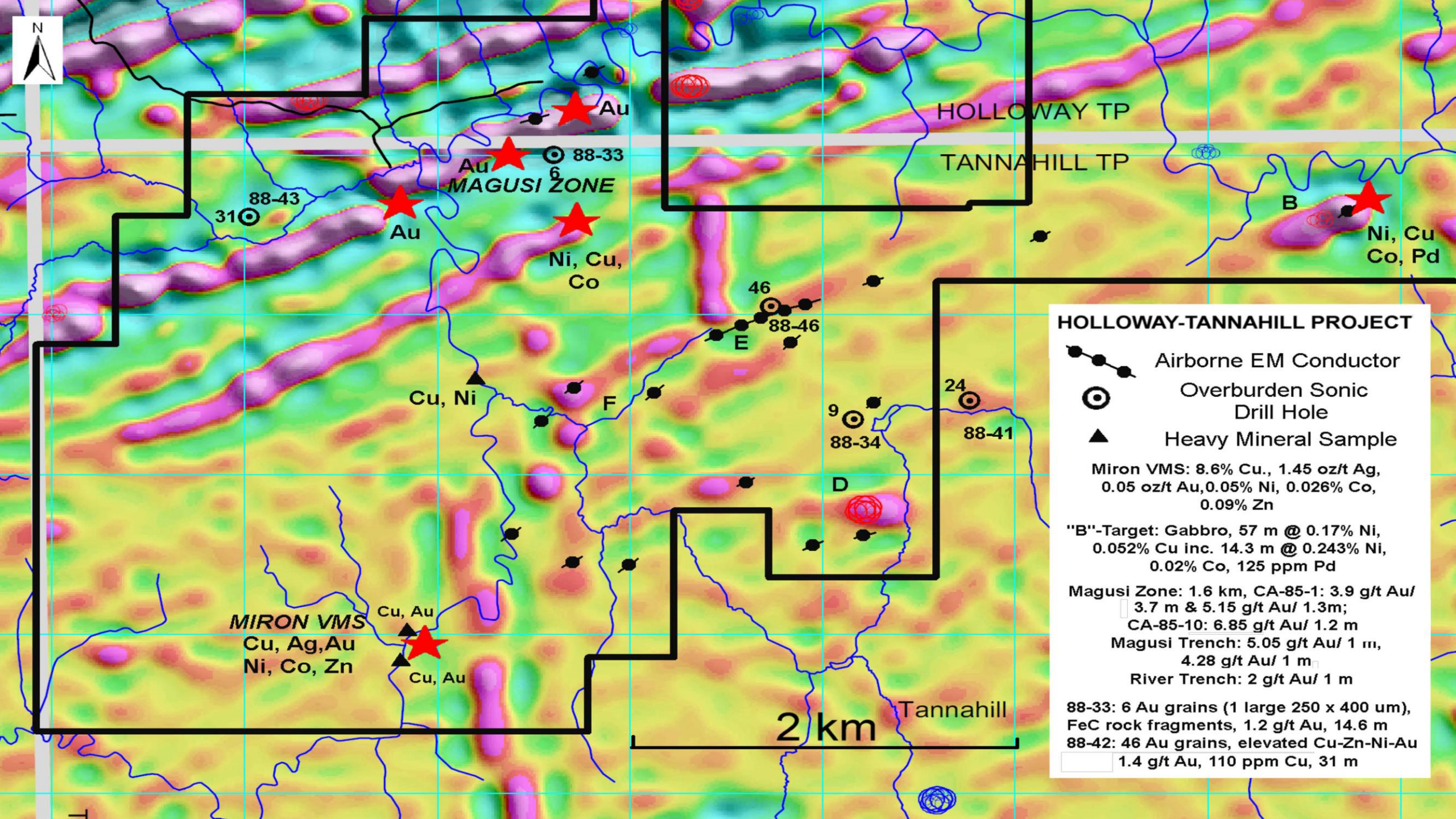
Drill-Ready Property

- 60 operational claims and 10 boundary claims covering a total of 1141.8 hectares
- Nickel-Copper-Palladium mineralization within gabbro pluton in south section of the property
- Target “B”: 0.243% Ni, 0.1% Cu, 0.02% Co, 124 ppm Pd
- 2 additional magnetic anomalies similar to Target “B”
- Gold-bearing shear zones on adjacent properties believed to extend across NW section of the property



Robert Dillman P.Ge. 519-264-9278 or 226-378-3793 rjdexplorations@gmail.com

Jim Renaud P.Ge. 519-473-3766 or 519-520-0535 rgc@execulink.com



HOLLOWAY TP
TANNAHILL TP

MAGUSI ZONE

88-43
31

88-33
6

Ni, Cu,
Co

46
88-46
E

9
88-34

24
88-41

Cu, Ni

F

D

MIRON VMS
Cu, Ag, Au
Ni, Co, Zn

Cu, Au
Cu, Au

2 km

Tannahill

HOLLOWAY-TANNAHILL PROJECT

- Airborne EM Conductor
- Overburden Sonic Drill Hole
- Heavy Mineral Sample

Miron VMS: 8.6% Cu., 1.45 oz/t Ag, 0.05 oz/t Au, 0.05% Ni, 0.026% Co, 0.09% Zn

"B"-Target: Gabbro, 57 m @ 0.17% Ni, 0.052% Cu inc. 14.3 m @ 0.243% Ni, 0.02% Co, 125 ppm Pd

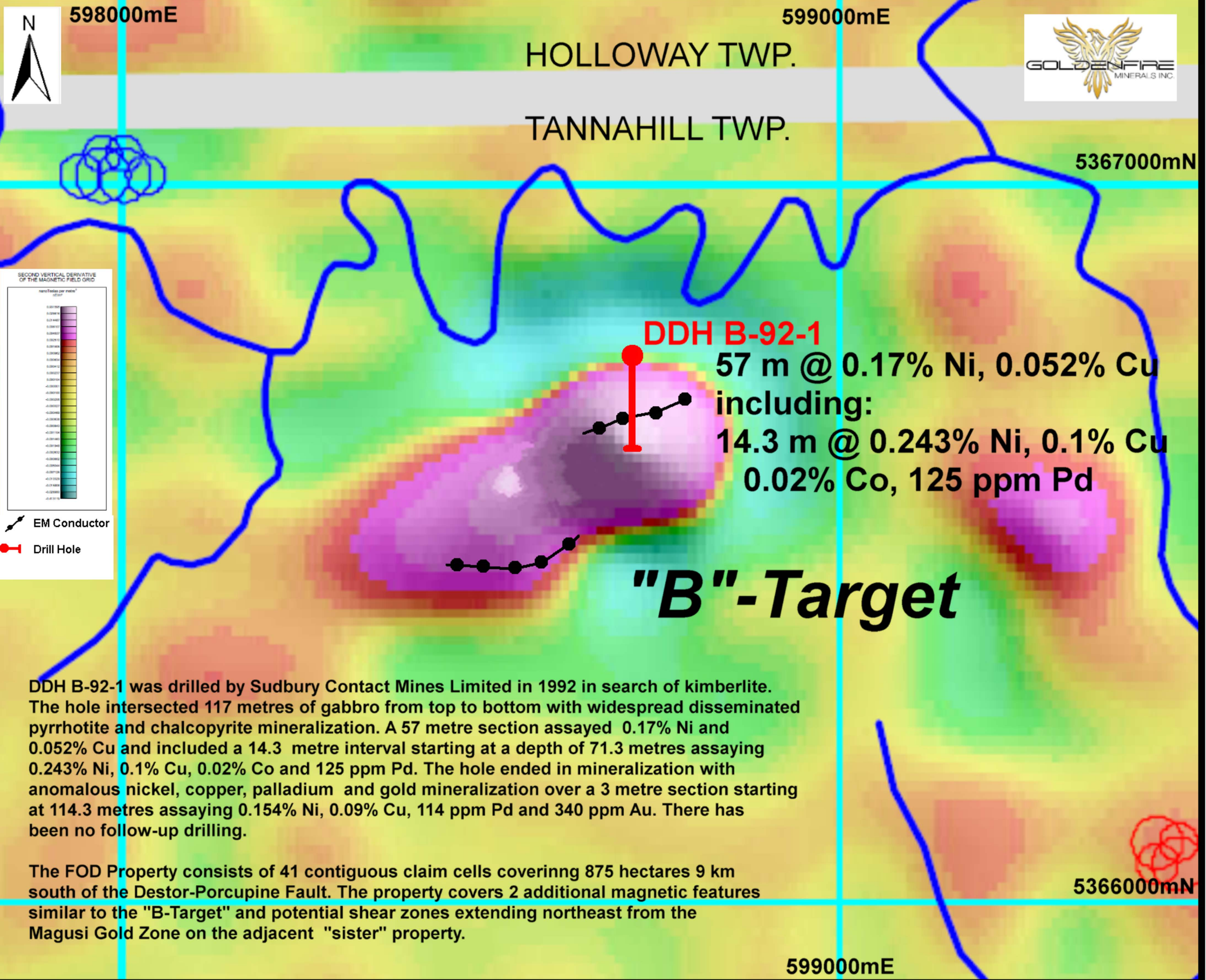
Magusi Zone: 1.6 km, CA-85-1: 3.9 g/t Au/ 3.7 m & 5.15 g/t Au/ 1.3m; CA-85-10: 6.85 g/t Au/ 1.2 m

Magusi Trench: 5.05 g/t Au/ 1 m, 4.28 g/t Au/ 1 m

River Trench: 2 g/t Au/ 1 m

88-33: 6 Au grains (1 large 250 x 400 um), FeC rock fragments, 1.2 g/t Au, 14.6 m

88-42: 46 Au grains, elevated Cu-Zn-Ni-Au 1.4 g/t Au, 110 ppm Cu, 31 m



SECOND VERTICAL DERIVATIVE OF THE MAGNETIC FIELD GRID
 nanoTeslas per metre (nT/m)

0.001900
0.001800
0.001700
0.001600
0.001500
0.001400
0.001300
0.001200
0.001100
0.001000
0.000900
0.000800
0.000700
0.000600
0.000500
0.000400
0.000300
0.000200
0.000100
0.000000
-0.000100
-0.000200
-0.000300
-0.000400
-0.000500
-0.000600
-0.000700
-0.000800
-0.000900
-0.001000
-0.001100
-0.001200
-0.001300
-0.001400
-0.001500
-0.001600
-0.001700
-0.001800
-0.001900

EM Conductor
 Drill Hole

DDH B-92-1
 57 m @ 0.17% Ni, 0.052% Cu
 including:
 14.3 m @ 0.243% Ni, 0.1% Cu
 0.02% Co, 125 ppm Pd

"B"-Target

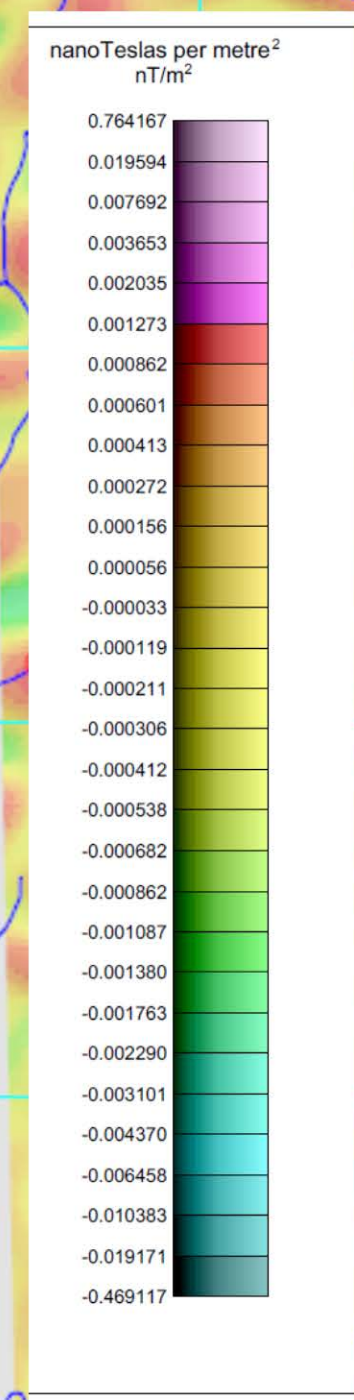
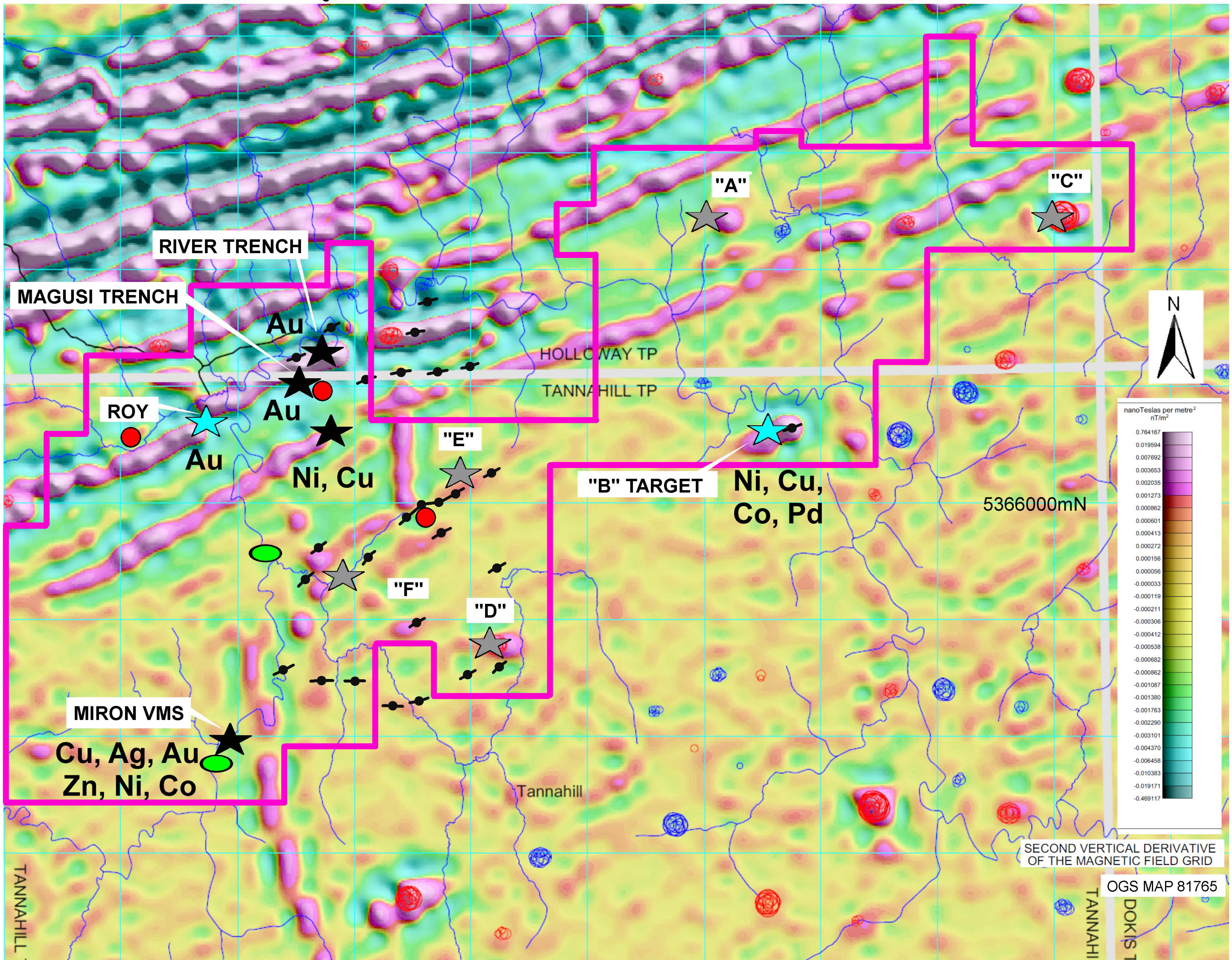
DDH B-92-1 was drilled by Sudbury Contact Mines Limited in 1992 in search of kimberlite. The hole intersected 117 metres of gabbro from top to bottom with widespread disseminated pyrrhotite and chalcopyrite mineralization. A 57 metre section assayed 0.17% Ni and 0.052% Cu and included a 14.3 metre interval starting at a depth of 71.3 metres assaying 0.243% Ni, 0.1% Cu, 0.02% Co and 125 ppm Pd. The hole ended in mineralization with anomalous nickel, copper, palladium and gold mineralization over a 3 metre section starting at 114.3 metres assaying 0.154% Ni, 0.09% Cu, 114 ppm Pd and 340 ppm Au. There has been no follow-up drilling.

The FOD Property consists of 41 contiguous claim cells covering 875 hectares 9 km south of the Destor-Porcupine Fault. The property covers 2 additional magnetic features similar to the "B-Target" and potential shear zones extending northeast from the Magusi Gold Zone on the adjacent "sister" property.

5366000mN

599000mE

HOLLOWAY - TANNAHILL PROJECT, ONTARIO



SECOND VERTICAL DERIVATIVE OF THE MAGNETIC FIELD GRID

OGS MAP 81765

- ★
Outcrop Mineralization
- ★
Drill Hole
- ★
Geophysical Target
- HEAVY MINERAL SAMPLE Cu +/- Au
- OVERBURDEN DRILL HOLE Au +/- Cu