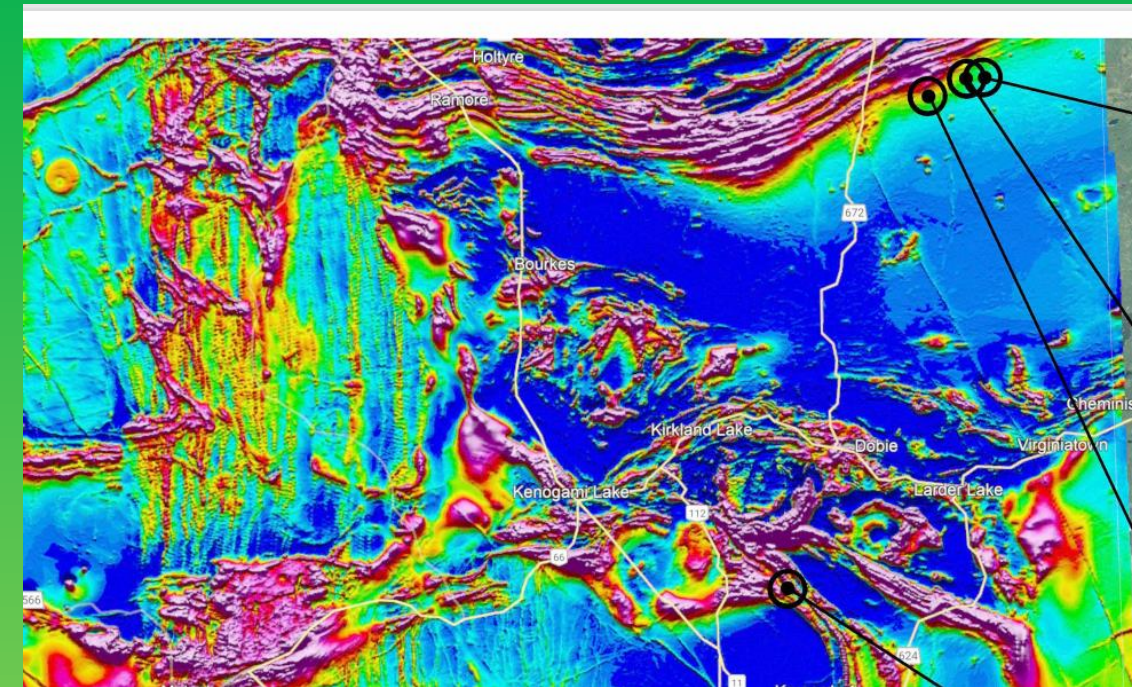


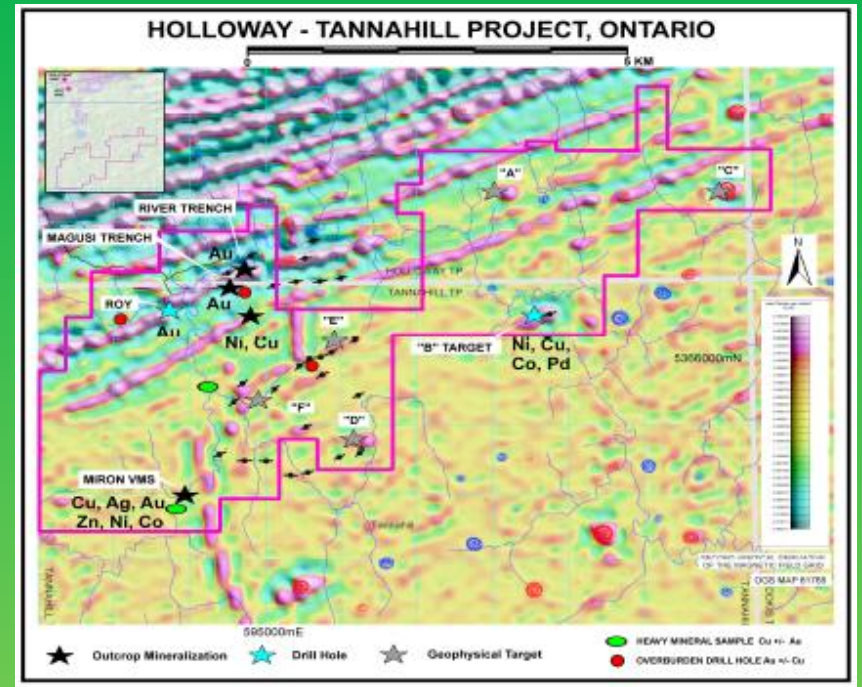
# Magusi Au + "Critical Minerals" Project



**FOD PROJECT**  
 Target "B"  
 0.243% Ni, 0.1% Cu  
 0.02% Co, 124 ppm Pd  
 14 metres  
 within 57 m @ 0.052% Cu, 0.17% Ni

**MAGUSI PROJECT**  
 Magusi Trench  
 5.04 g/t Au/ 1m,  
 4.28 g/t Au/ 1.2 m  
 Roy Zone  
 DDH CA-85-1: 3.3 g/t Au/ 3.7 m  
 & 4.3 g/t Au/ 1.2 m  
 DDH CA-85-10: 6.3 g/t Au/ 1.2 m  
 New Ni Occurrence  
 0.24% Ni, 0.1% Cu

**MIRON VMS**  
 8.6% Cu, 46.8 g/t Ag,  
 1.5 g/t Au, 0.09% Zn,  
 0.05% Ni, 0.026% Co

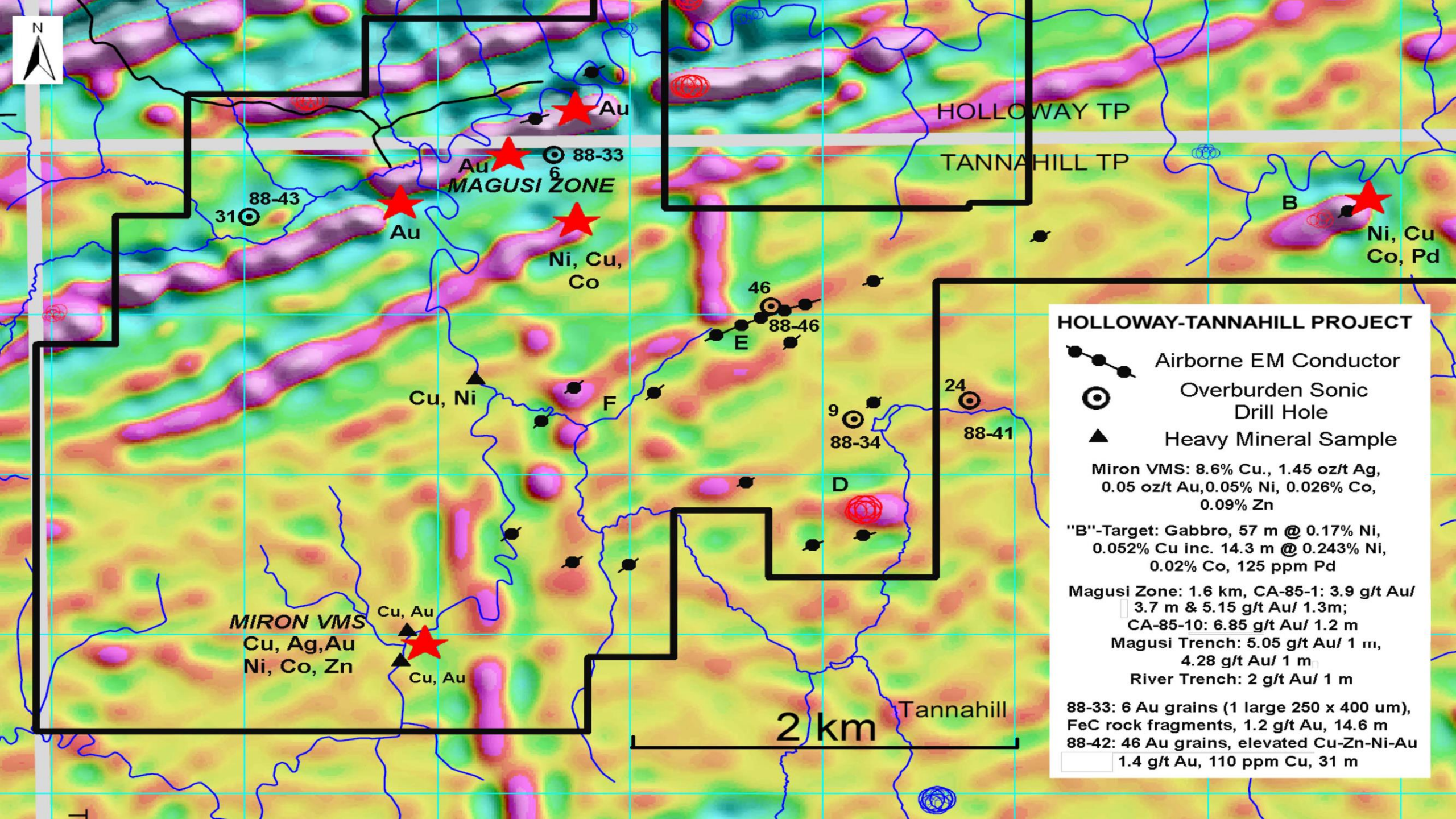


- Altered and deformed mafic metavolcanic rocks with minor thin interbeds of metasedimentary units
- Multiple generations of quartz-carbonate veins
- Samples have run up to: 5.05 g/t Au (1m) and 4.28 g/t Au (1.2m)
- DDH CA-85-1: 3.3 g/t Au/ 3.7 m & 4.3 g/t Au/ 1.2 m
- DDH CA-85-10: 6.3 g/t Au/ 1.2 m
- New Ni-Cu-Co-occurrence: 0.1% Ni, 0.29% Cu, 0.025% Co



Robert Dillman P.Geo. 519-264-9278 or 226-378-3793 [rjdexplorations@gmail.com](mailto:rjdexplorations@gmail.com)

Jim Renaud P.Geo. 519-473-3766 or 519-520-0535 [rgc@execulink.com](mailto:rgc@execulink.com)



HOLLOWAY TP  
TANNAHILL TP

88-43  
31

Au  
Au  
Au  
MAGUSI ZONE  
88-33  
6

Ni, Cu,  
Co

46  
88-46  
E

Cu, Ni

F

9  
88-34  
D  
24  
88-41

MIRON VMS  
Cu, Ag, Au  
Ni, Co, Zn

Cu, Au  
Cu, Au

2 km

Tannahill

**HOLLOWAY-TANNAHILL PROJECT**

- Airborne EM Conductor
- Overburden Sonic Drill Hole
- Heavy Mineral Sample

Miron VMS: 8.6% Cu., 1.45 oz/t Ag, 0.05 oz/t Au, 0.05% Ni, 0.026% Co, 0.09% Zn

"B"-Target: Gabbro, 57 m @ 0.17% Ni, 0.052% Cu inc. 14.3 m @ 0.243% Ni, 0.02% Co, 125 ppm Pd

Magusi Zone: 1.6 km, CA-85-1: 3.9 g/t Au/ 3.7 m & 5.15 g/t Au/ 1.3m; CA-85-10: 6.85 g/t Au/ 1.2 m

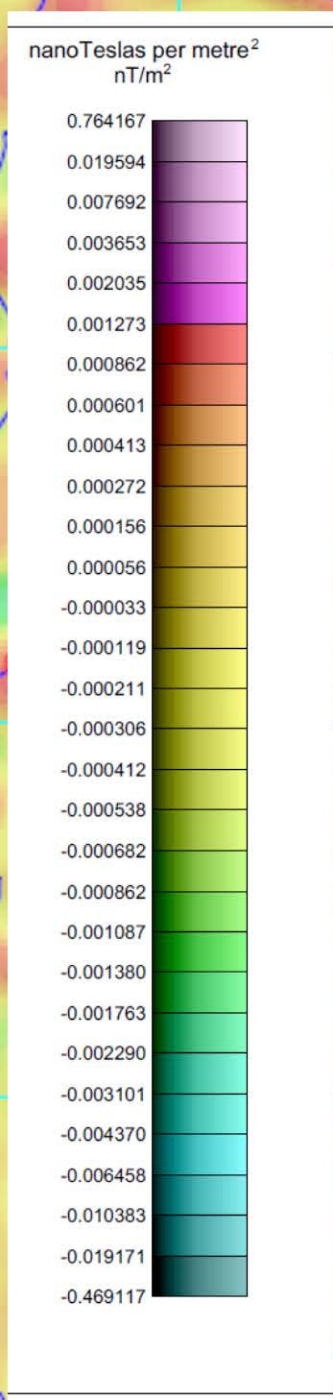
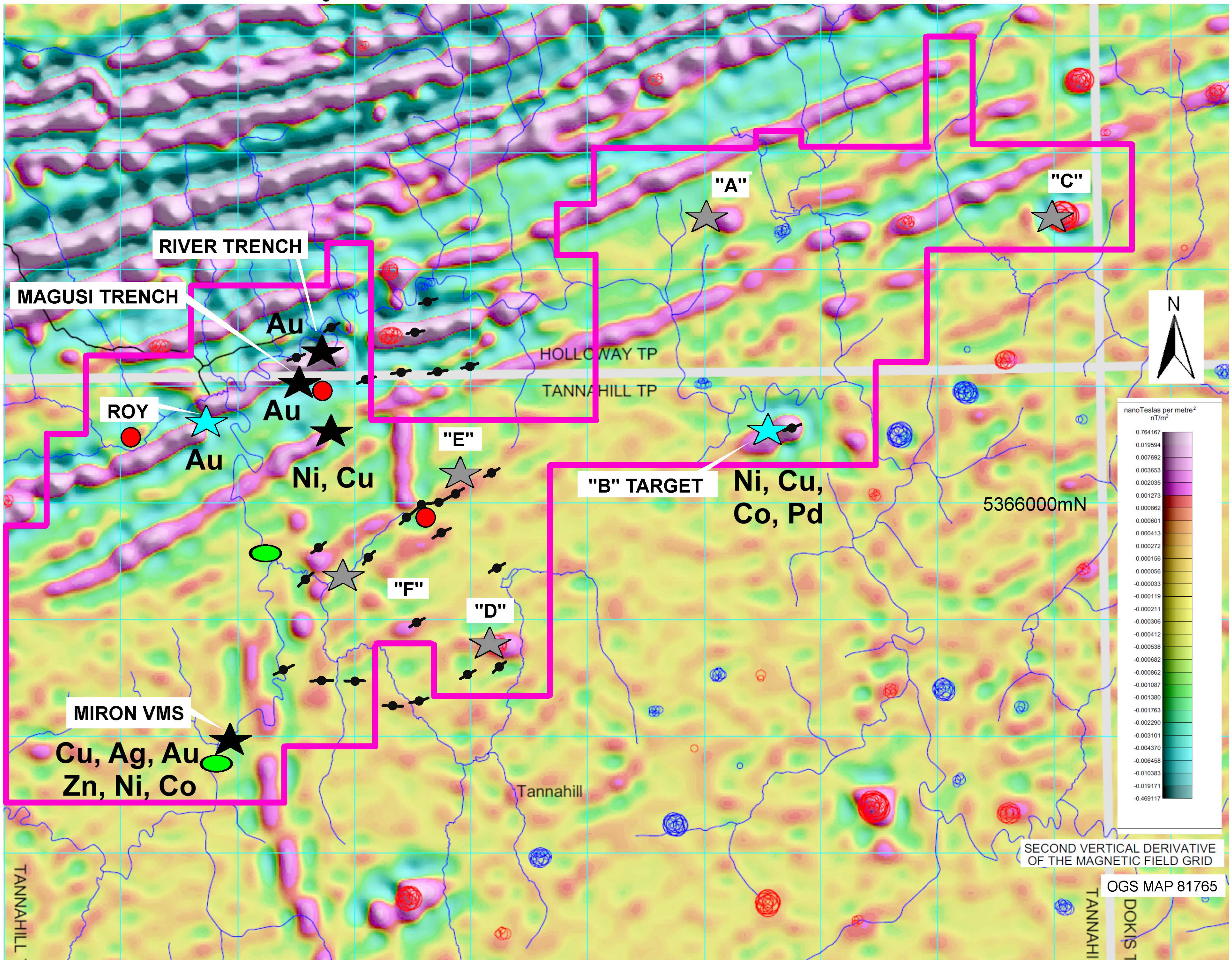
Magusi Trench: 5.05 g/t Au/ 1 m, 4.28 g/t Au/ 1 m

River Trench: 2 g/t Au/ 1 m

88-33: 6 Au grains (1 large 250 x 400 um), FeC rock fragments, 1.2 g/t Au, 14.6 m

88-42: 46 Au grains, elevated Cu-Zn-Ni-Au 1.4 g/t Au, 110 ppm Cu, 31 m

# HOLLOWAY - TANNAHILL PROJECT, ONTARIO



SECOND VERTICAL DERIVATIVE OF THE MAGNETIC FIELD GRID

OGS MAP 81765

- ★
Outcrop Mineralization
- ★
Drill Hole
- ★
Geophysical Target
- HEAVY MINERAL SAMPLE Cu +/- Au
- OVERBURDEN DRILL HOLE Au +/- Cu

# MAGUSI RIVER Au ZONE HOLLOWAY-TANNAHILL TWP.

