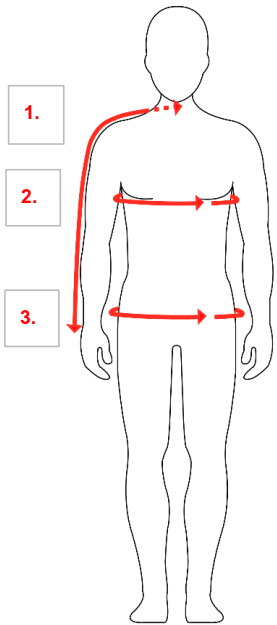


fleOS Unisex Size Guide

Find your size by using the body measurements below

Alpha Size	Chest	Hip	Arm length
S	91cm//36"	91cm/36"	83cm/33"
M	99cm/39"	99cm/39"	86cm/34"
L	107cm/42"	107cm/42"	89cm/35"

How to Measure



Grab a tape measure, ask your friend to measure you while standing in a relaxed position.

Avoid wearing bulky clothes and make sure the tape measure is flat against the body, but not too tight.

1. Arm Length - With your arms slightly bent, measure from the centre back neck, over the shoulder and elbow, down to the wrist.

2. Chest - Measure around your body, under the arms at the fullest point for the chest.

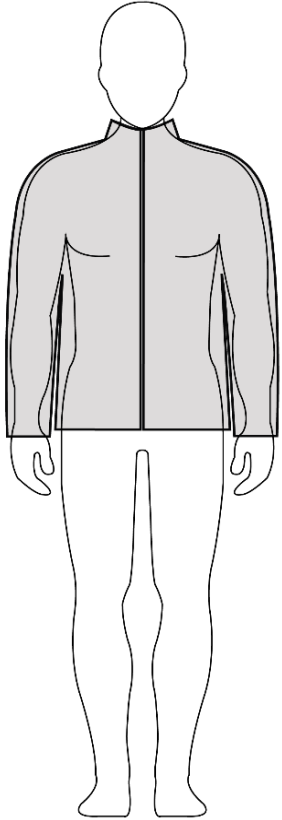
3. Hip - Measure around the widest part of your hips.

Garment Measurements

Alpha Size	Chest	Hip	*Sleeve length	Jacket *CB length	Gown *CB length	Blanket *CB length
S	115cm./45"	115cm./45"	87cm/34.5"	71cm/28"	112cm/44"	192cm/75.5"
M	123cm/48.5"	123cm/48.5"	90cm/35.5"	72.5cm/28.5"	114cm/45"	196cm/77"
L	131cm/51.5"	131cm/51.5"	93cm/36.5"	73.5cm/29"	115.5cm/45.5"	198cm/78"

*CB - Centre back *Sleeve length measured CB neck to cuff

Fit Guide



The Jacket's fit is oversized and relaxed.

It is designed with the wearer's freedom of movement in mind.

It will comfortably fit a thick baselayer underneath.