



Ten Second Color™ (TSC) Dye penetrates and colors concrete and other cementitious surfaces. When properly applied, TSC creates beautifully mottled effects similar to acid stain in a matter of seconds without the wait time required by acid, saving you time and money. A translucent dye, TSC colors can be combined into countless variations and hues, or layered for unique effects. TSC comes in a convenient pre-measured plastic container. Simply fill with acetone, mix and go!



CR-200-32OZ
Ebony



CR-201-32OZ
Cherrywood



CR-202-32OZ
French Roast



CR-203-32OZ
Imperial Blue



CR-204-32OZ
Evergreen



CR-205-32OZ
Amber



CR-206-32OZ
Violet



CR-207-32OZ
Cranberry



CR-208-32OZ
Caribbean



CR-209-32OZ
Hazelnut



CR-210-32OZ
Cinnamon



CR-211-32OZ
Montana Wheat



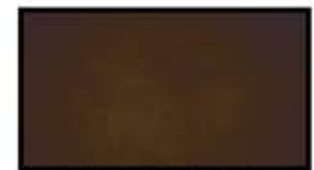
CR-212-32OZ
Citron



CR-213-32OZ
Rosewood



CR-214-32OZ
Tuscan Brown



CR-215-32OZ
Espresso Bean

The Ten Second Color™ Dye samples shown above are representative of TSC applied to standard, gray concrete using the directions provided on the Technical Data Sheet printed on the back of this color chart. Results may vary depending on the condition, age and makeup of the concrete, and/or the application methods used. Always test prior to use.