



Live in a piece of History!  
Original farmhouse  
with modern amenities!

## FARMHOUSE APARTMENT B

second floor apartment  
with  
private elevator

Bedroom 1:  
Bedroom 2:  
Living Room:  
Sitting Room:  
Eat in Kitchen w/ nook  
Laundry  
Full Bath 1  
Full Bath 2  
Private Side Patio

(Floor plan on reverse)

### New Appliances Included:

Refrigerator, Stove, Microwave, Dishwasher,  
Garbage Disposal, Washer, Dryer

### Updated Options:

Flooring, Carpeting, Lighting, Hardware,  
Corian Countertop, Tile Backsplash

(1,188 SF)

Floor plans shown are not to scale and indicate approximate square footage

### Entry Fee:

*75% Refund at Resale*

**Starting at \$213,900**

Upgraded features on reverse side

### Monthly Maintenance & Service Fee includes:

- 24/7 On-Call Maintenance
- Property and School Taxes
- Property Insurance
- Maintenance (Inside, Outside, & Appliances)
- Water/Sewer
- Trash/Recycling
- Landscaping
- Snow Removal

*1 Resident: \$1,099*

*2 Residents: \$1,322*

*Fee ends when home is returned for resale.*

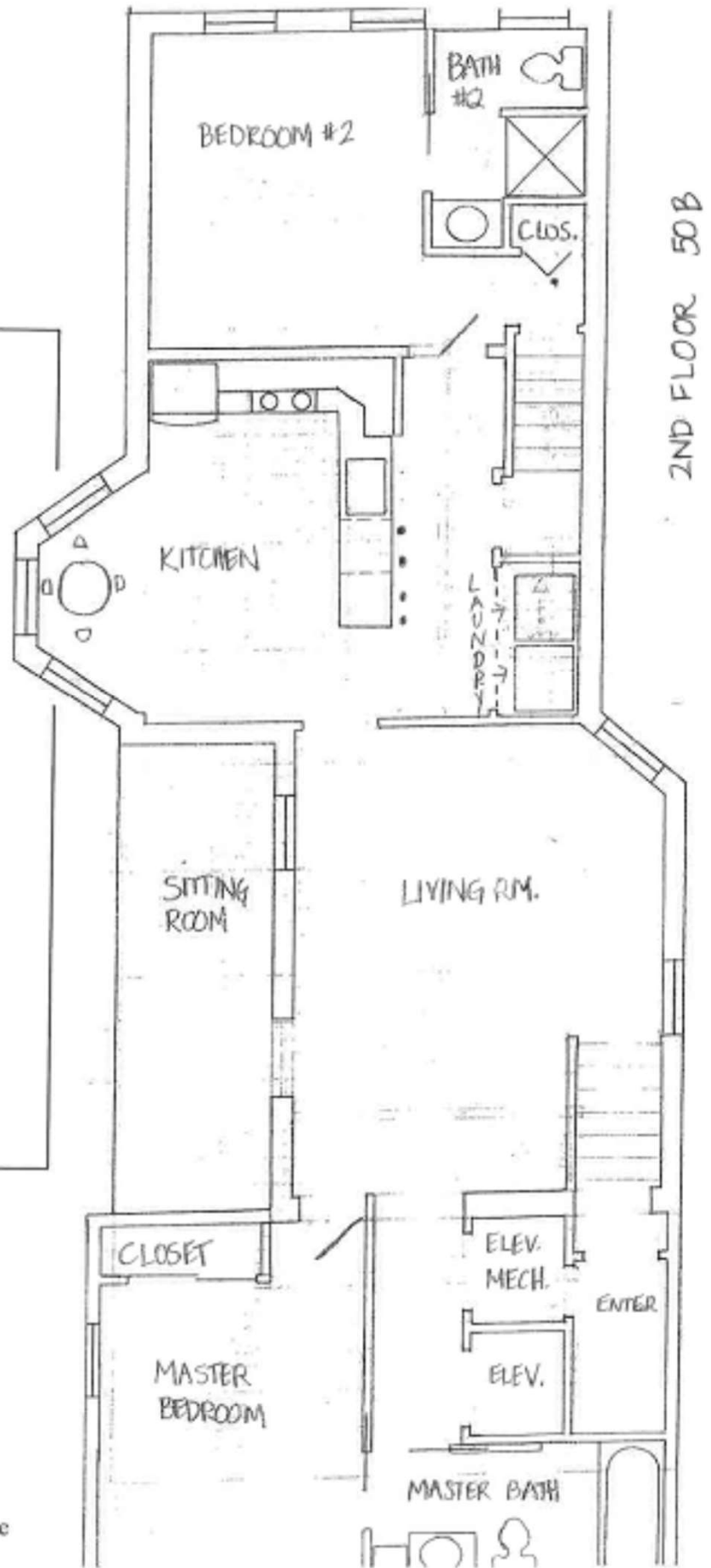
- Homes have forced air/natural gas heat w/central air.
- Resident is responsible for utilities (heat, electric, cable, internet, & phone).
- We encourage all residents to carry content insurance, e.g., tv, furniture, jewelry, etc.



# FARMHOUSE APARTMENT B

second floor apartment  
with  
private elevator

- Bedroom 1:
- Bedroom 2:
- Living Room:
- Sitting Room:
- Eat in Kitchen w/ nook
- Laundry
- Full Bath 1
- Full Bath 2
- Private Side Patio



Floor plans shown are not to scale and indicate  
approximate square footage

2011 Buchert Road Pottstown, PA 19464 | Phone: 610-323-5190 | Fax: 610-326-3142

BuchertRidge.com  
Find us on YouTube

\*02-05-2024