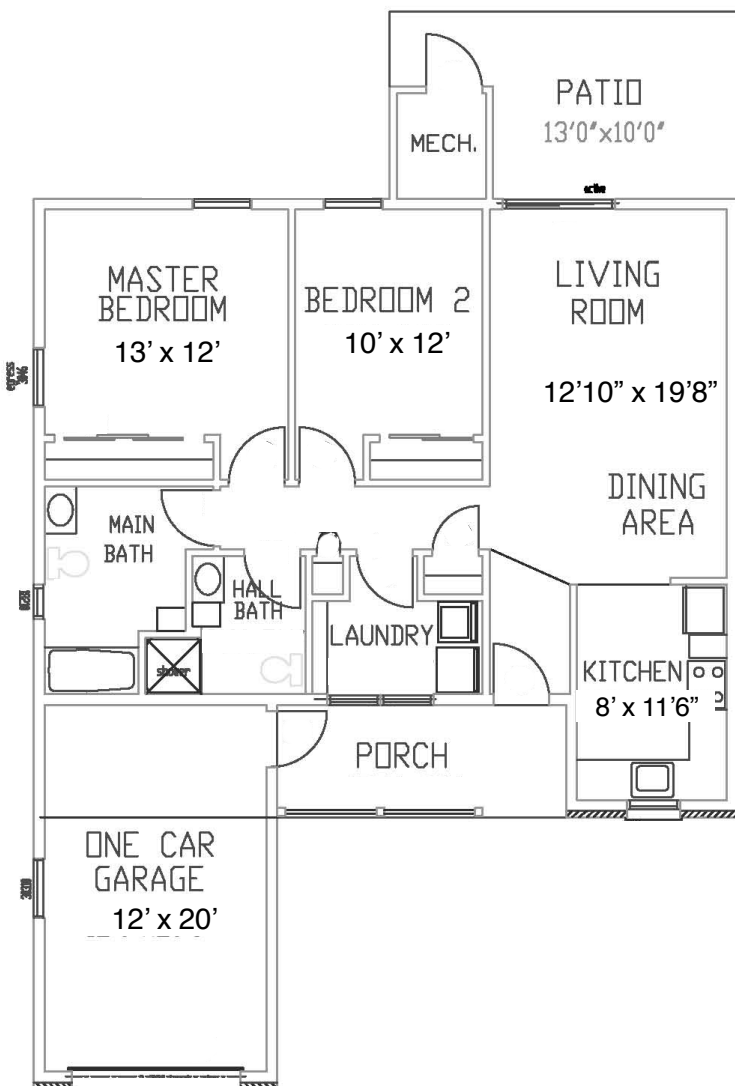




**BUCHERT**  
 RIDGE COMMUNITY  
 WHERE NEIGHBORS FEEL LIKE FAMILY

Cottage

**EXTENDED CREST**  
**2 Bedroom, 2 Bathroom**  
*(Shown with Garage)*



*(1230 SF)*

Floor plans shown are not to scale and indicate approximate square footage

**Appliances Included:**

Refrigerator, Stove, Microwave, Dishwasher, Washer, Dryer

**Updated Options:**

Flooring, Carpeting, Lighting, Hardware, Corian Countertop, Tile Backsplash

**Entry Fee:**

*75% Refund at Resale*

**Starting at \$233,400**

Upgraded features on reverse side

**Monthly Maintenance & Service Fee includes:**

- 24/7 On-Call Maintenance
- Property and School Taxes
- Property Insurance
- Maintenance (Inside, Outside, & Appliances)
- Water/Sewer
- Trash/Recycling
- Landscaping
- Snow Removal

**Monthly Fee:**

1 Resident: \$1,687.50  
 2 Residents: \$1,986.25

*Fee ends when home is returned for resale.*

- Homes have forced air/natural gas heat w/central air.
- Resident is responsible for utilities (heat, electric, cable, internet, & phone).
- We encourage all residents to carry content insurance, e.g., tv, furniture, jewelry, etc.



### **Upgraded Features: Extended Crest**

Garage	\$22,000
Extra Half Bath	\$ 3,300
Patio Enclosure	\$ 5,200
Patio Enclosure w/ Heat & Air	\$ 7,800
4-Season Sunroom Addition	\$20,000
Extra Patio	\$ 2,000
Single Home	\$13,000

Upgraded features vary by home.

## **NOTES**