



Live in a piece of History!
Original farmhouse
with modern amenities!

FARMHOUSE APARTMENT B

second floor apartment
with
private elevator

Bedroom 1:
Bedroom 2:
Living Room:
Sitting Room:
Eat in Kitchen w/ nook
Laundry
Full Bath 1
Full Bath 2
Private Side Patio

(Floor plan on reverse)

New Appliances Included:

Refrigerator, Stove, Microwave, Dishwasher,
Garbage Disposal, Washer, Dryer

Updated Options:

Flooring, Carpeting, Lighting, Hardware,
Corian Countertop, Tile Backsplash

(1,188 SF)

Floor plans shown are not to scale and indicate approximate square footage

Entry Fee:

75% Refund at Resale

Starting at \$198,800

Upgraded features on reverse side

Monthly Maintenance & Service Fee includes:

- 24/7 On-Call Maintenance
- Property and School Taxes
- Property Insurance
- Maintenance (Inside, Outside, & Appliances)
- Water/Sewer
- Trash/Recycling
- Landscaping
- Snow Removal

1 Resident: \$960

2 Residents: \$1,154

Fee ends when home is returned for resale.

- Homes have forced air/natural gas heat w/central air.
- Resident is responsible for utilities (heat, electric, cable, internet, & phone).
- We encourage all residents to carry content insurance, e.g., tv, furniture, jewelry, etc.



Upgraded Features: Farmhouse A

Garage	\$20,400
Extra half bath	\$ 3,000
3season patio enclosure	\$ 4,800
4-season patio enclosure	\$ 7,200
4season stick-built sunroom	\$12,000
Extra patio	\$ 1,200
Single home	\$12,000

Upgraded features vary by home

NOTES

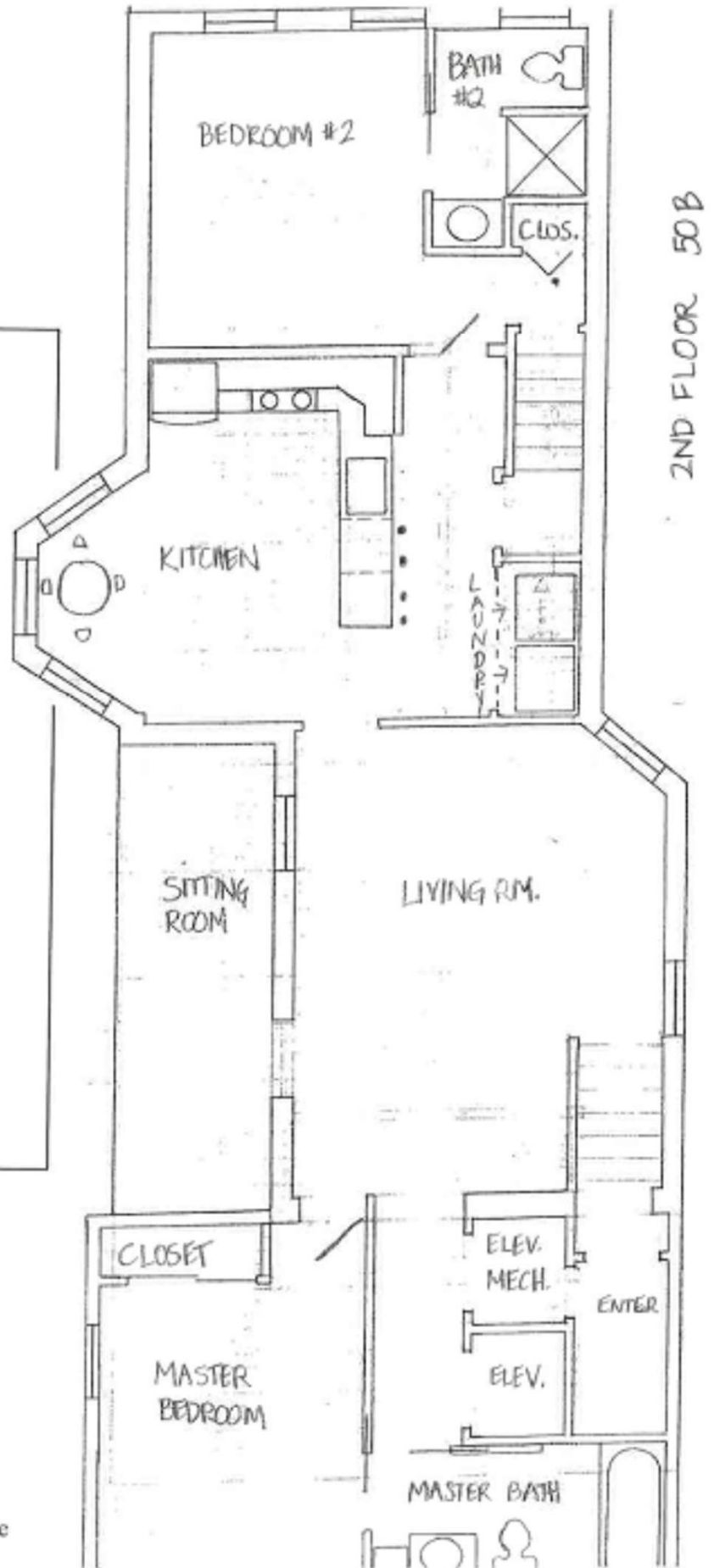
INSURANCE, E.G., TV, FURNITURE, JEWELRY, ETC.



FARMHOUSE APARTMENT B

second floor apartment
with
private elevator

- Bedroom 1:
- Bedroom 2:
- Living Room:
- Sitting Room:
- Eat in Kitchen w/ nook
- Laundry
- Full Bath 1
- Full Bath 2
- Private Side Patio



Floor plans shown are not to scale and indicate
approximate square footage

2011 Buchert Road Pottstown, PA 19464 | Phone: 610-323-5190 | Fax: 610-326-3142

BuchertRidge.com
Find us on YouTube

*05-16-2022