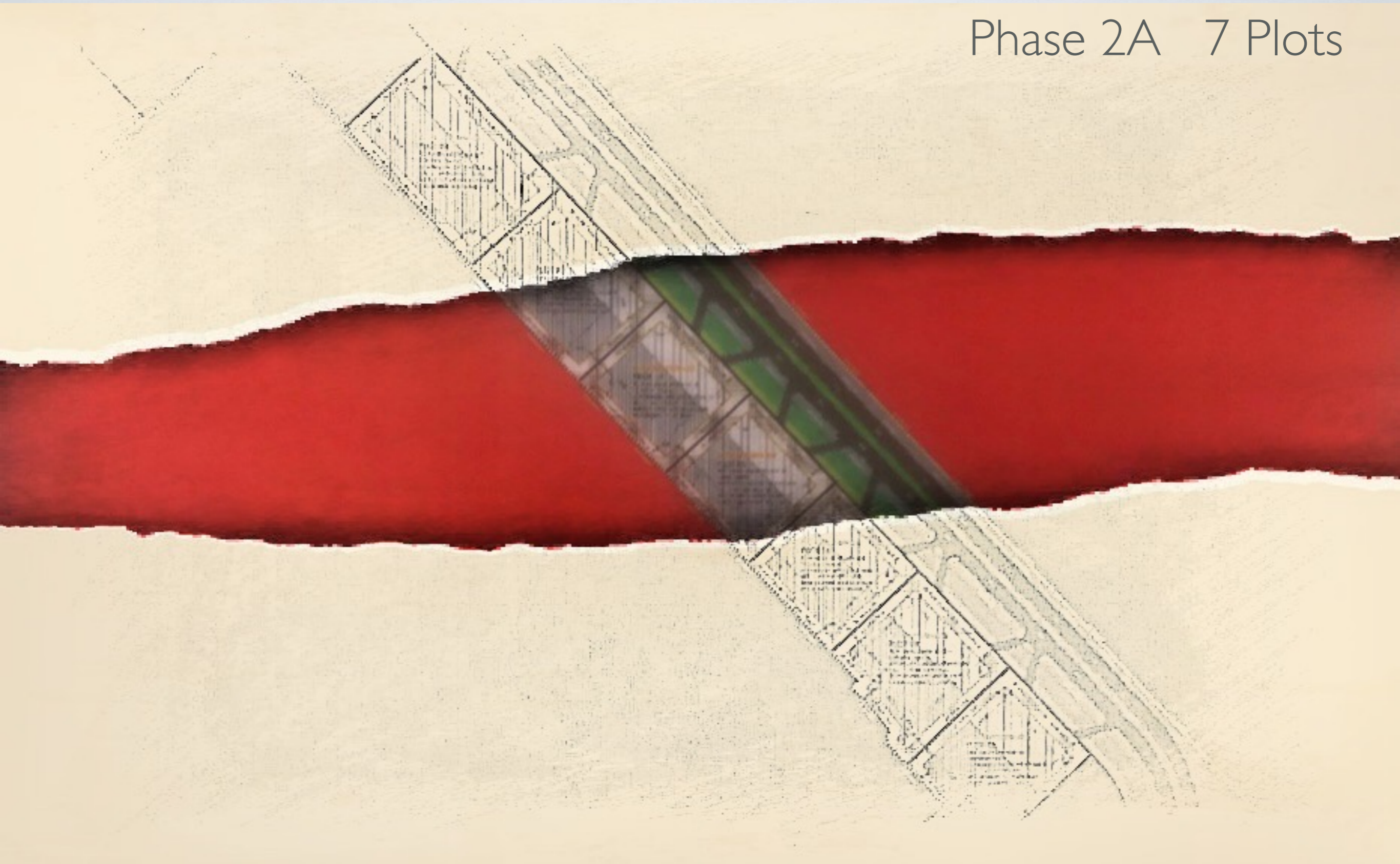


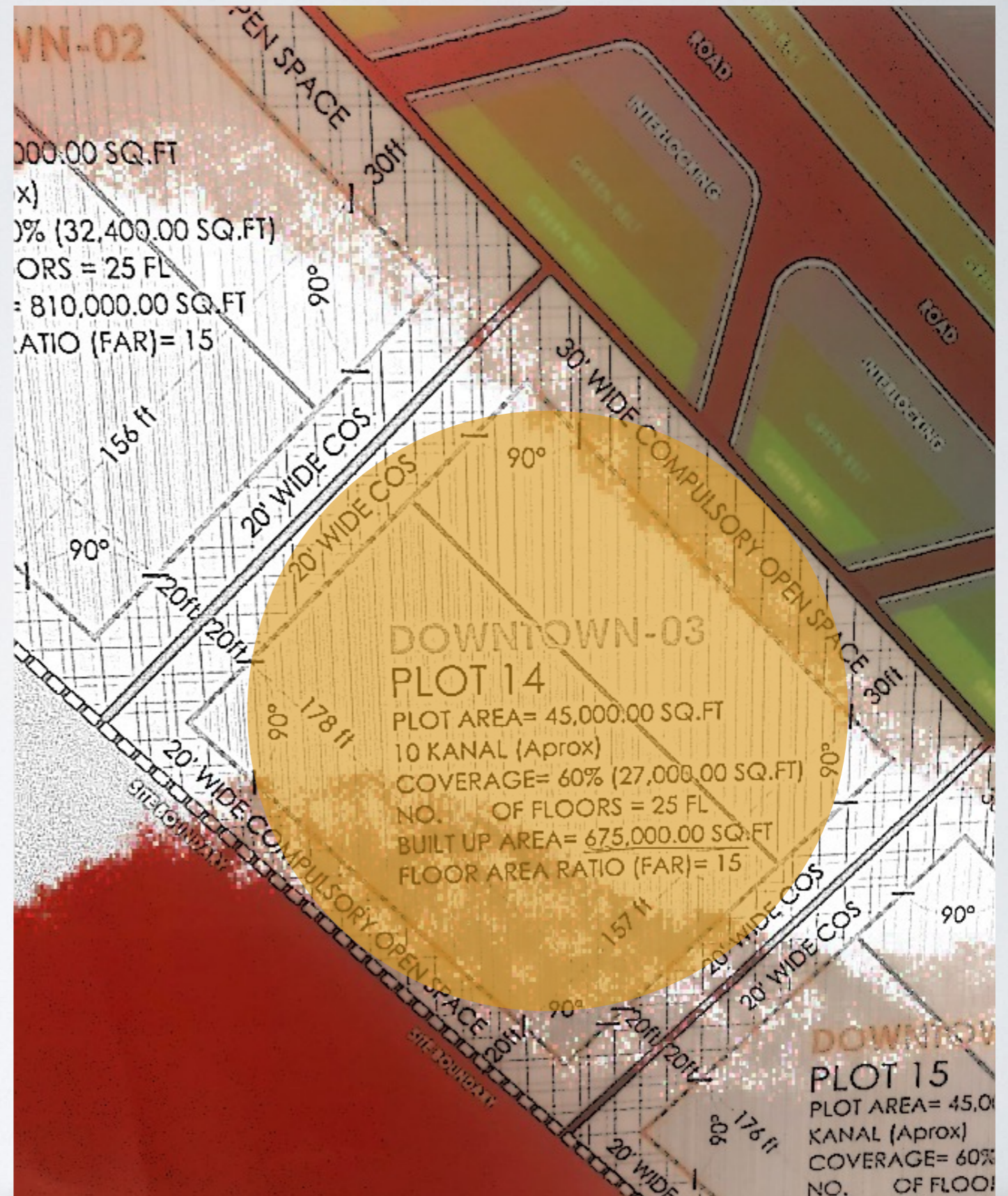
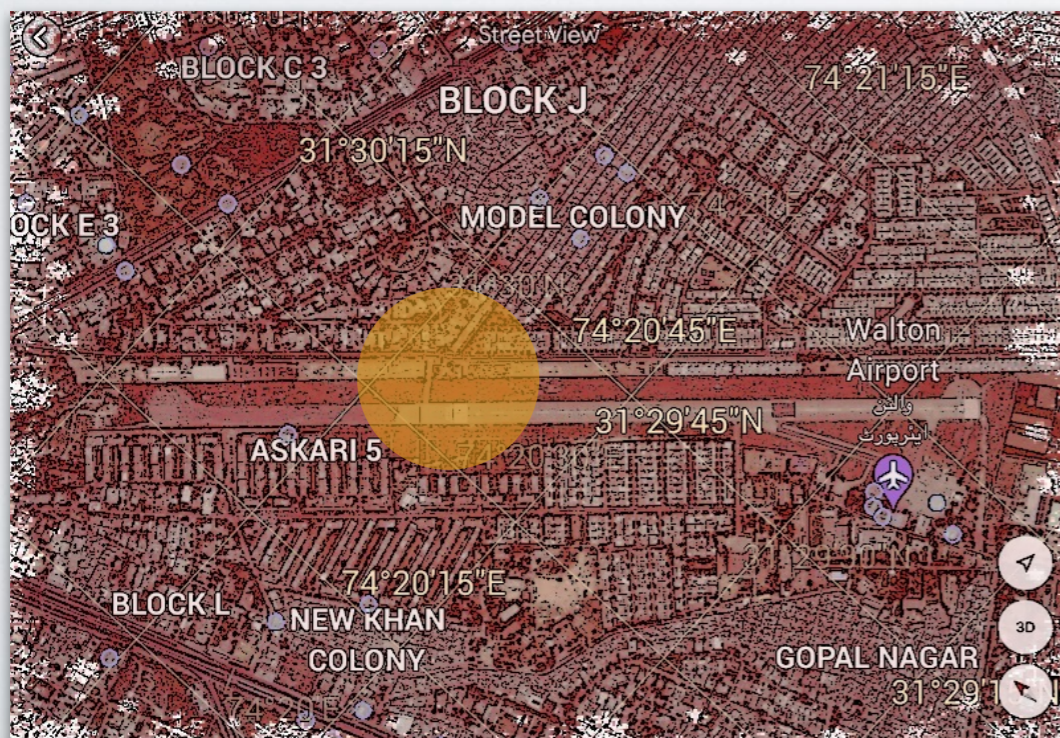
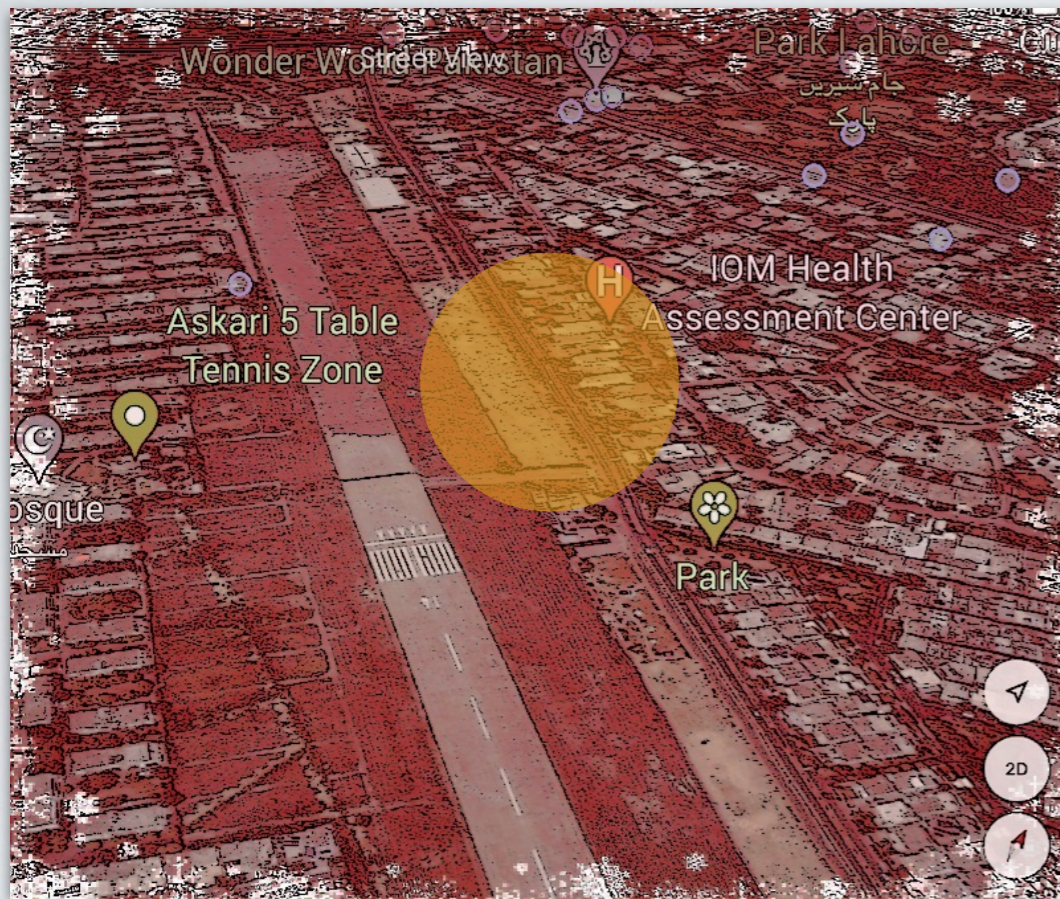
LAHORE DOWNTOWN

Phase 2A 7 Plots



LAHORE DOWNTOWN

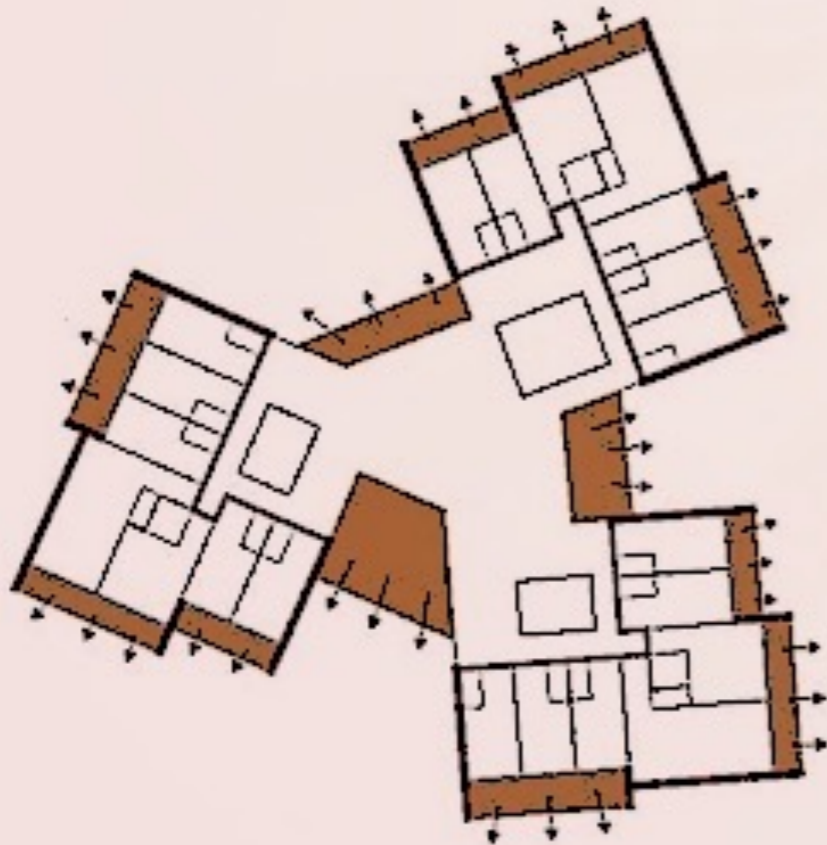
Phase 2A 7 Plots



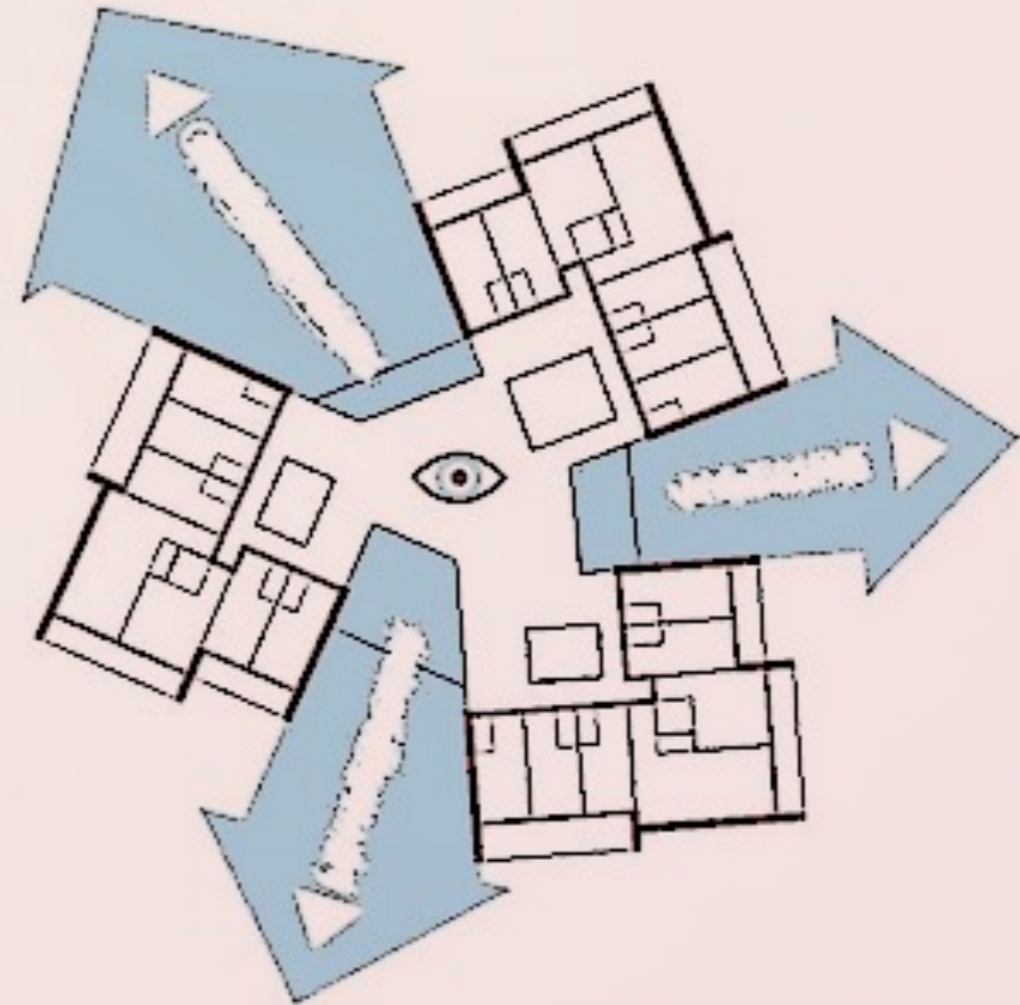
CONCEPTUALISATION



CONCEPTUALISATION

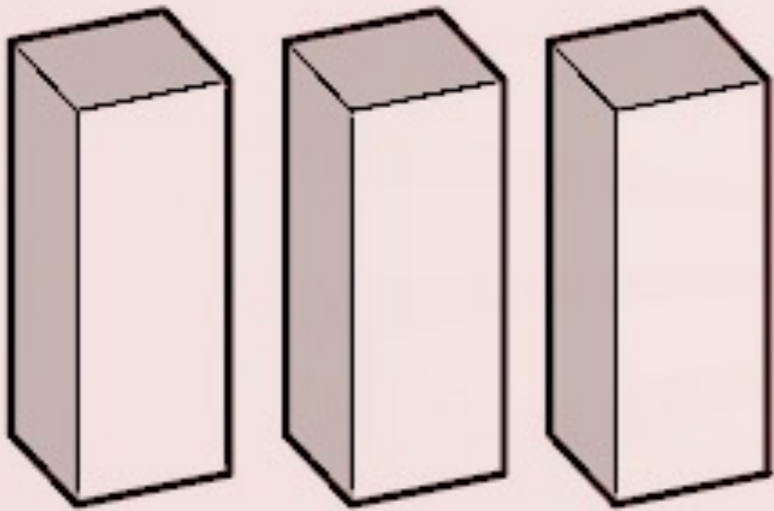


All rooms areas have balconies and views

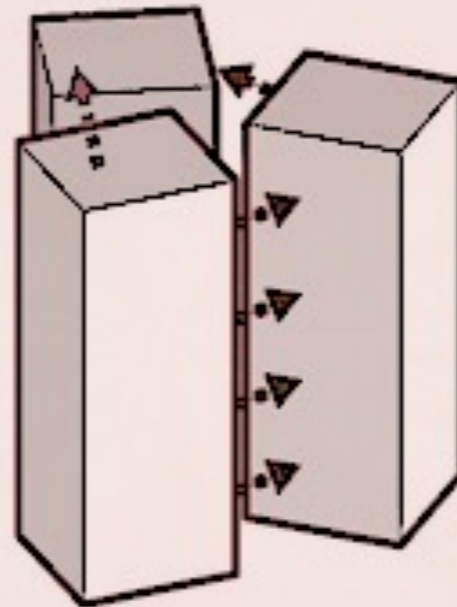


Transparency & Sight-lines

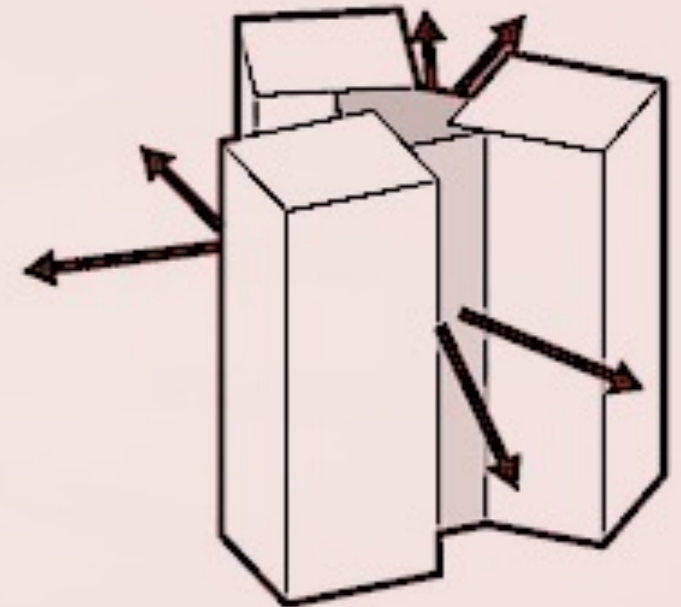
CONCEPTUALISATION



Programmatic area subdivide into small scale units

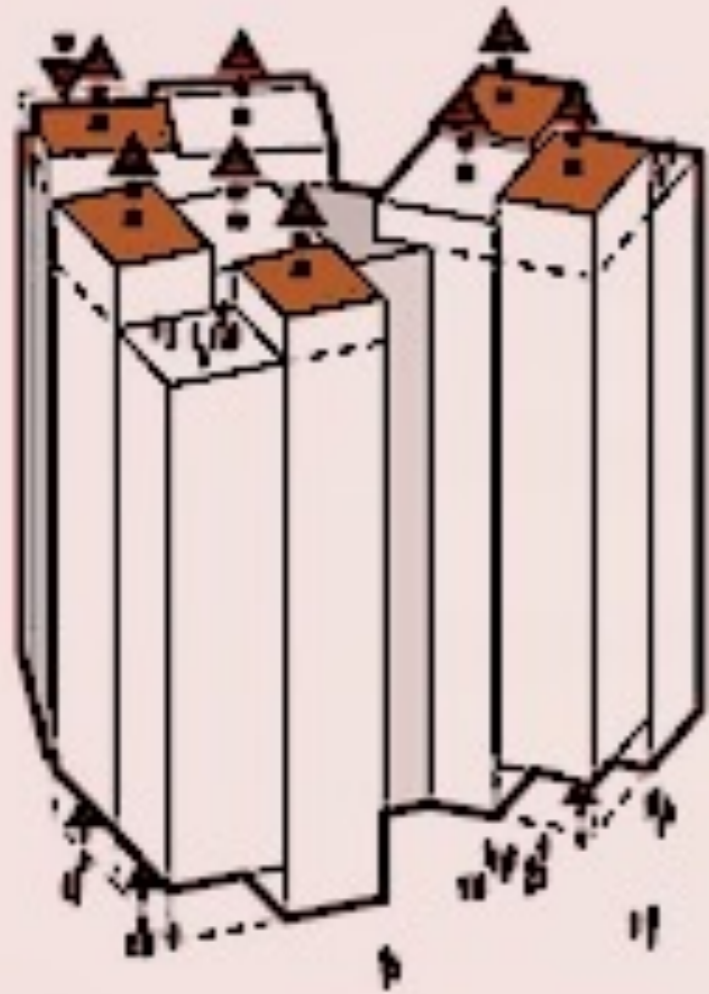


Three towers arranged around a shared centre

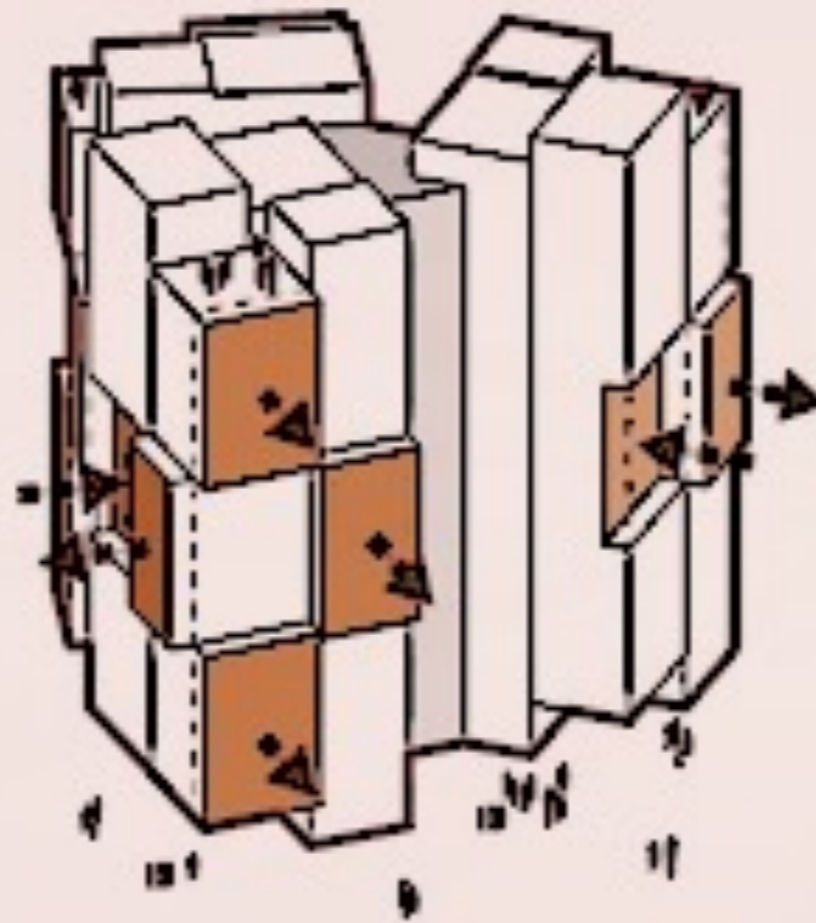


Views and Visuals connections to the surroundings

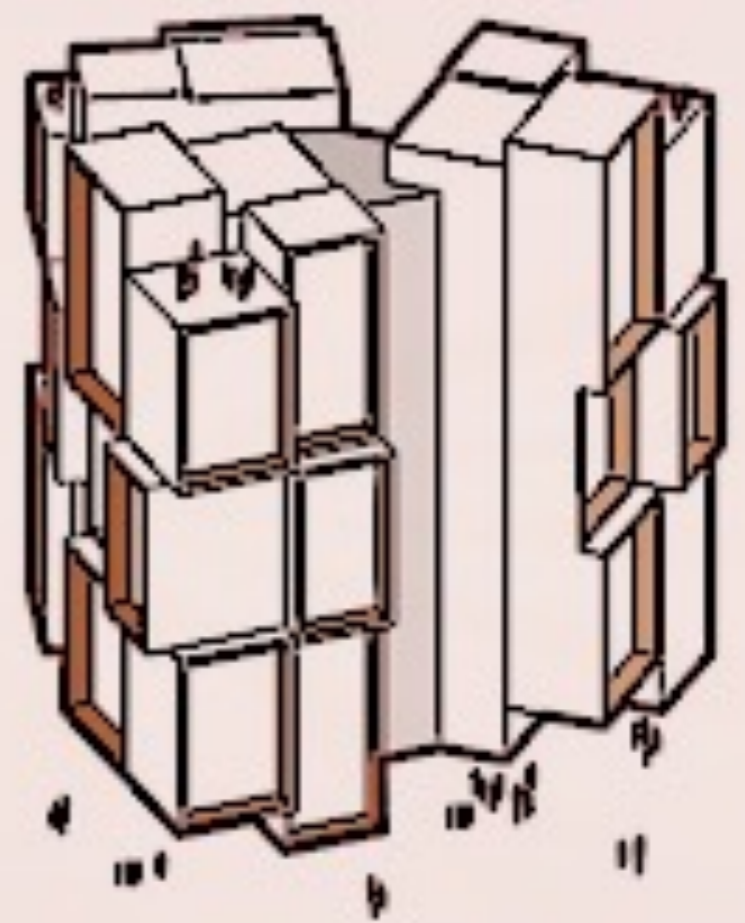
CONCEPTUALISATION



Volumes are pushed pulled at ground and the top

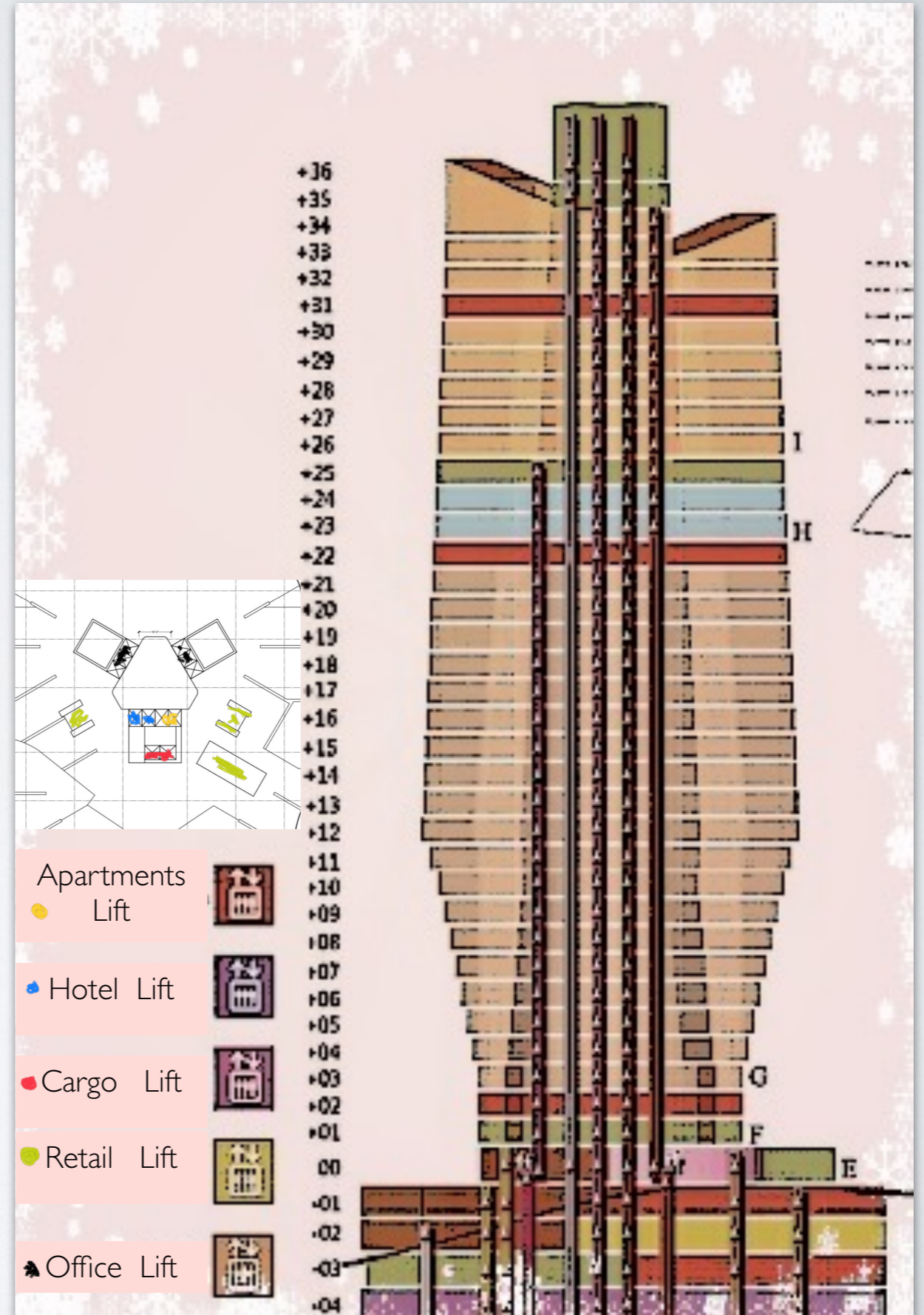
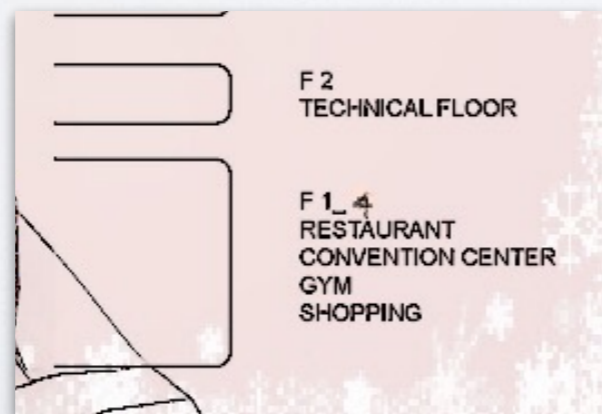
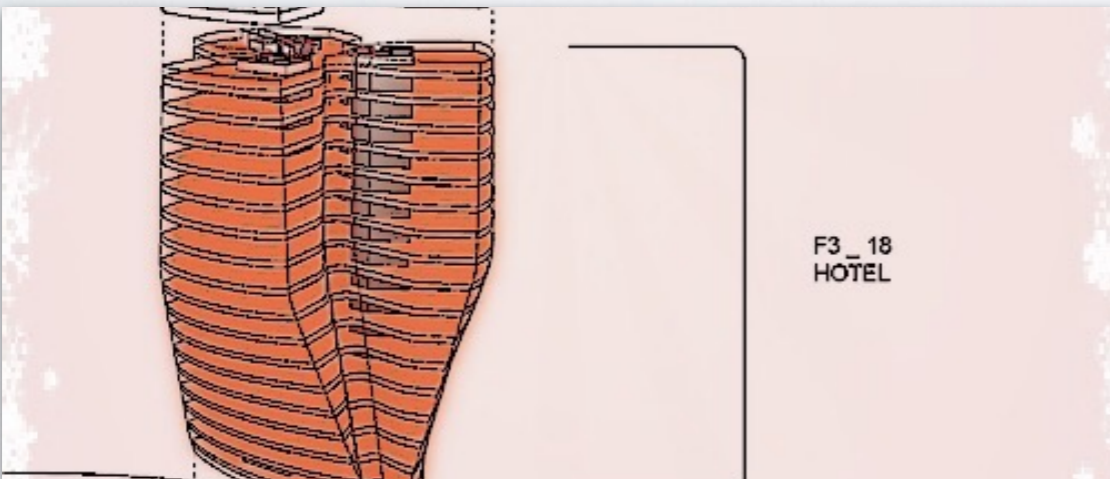
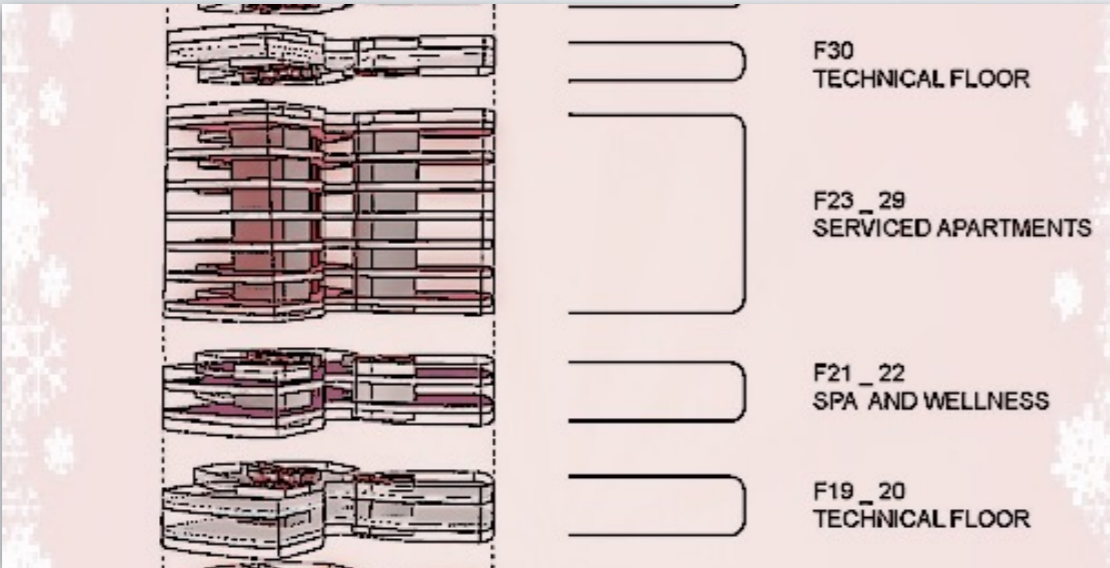
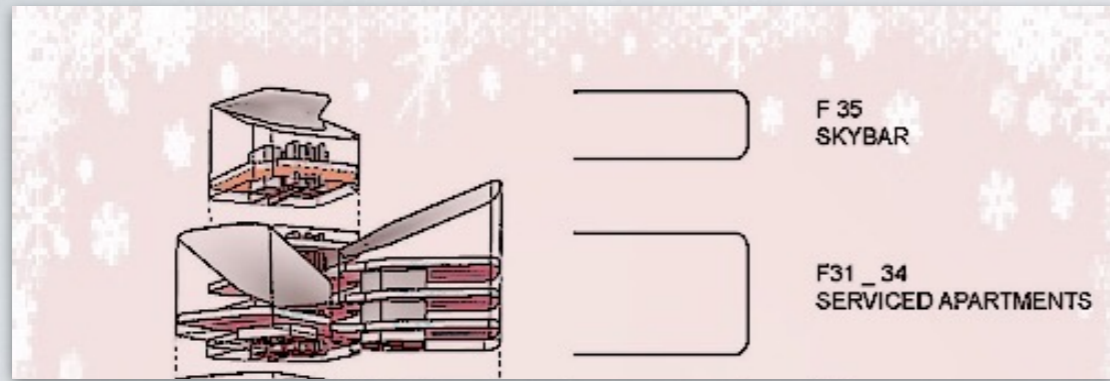


Shifting and rotating creates directions and surfaces

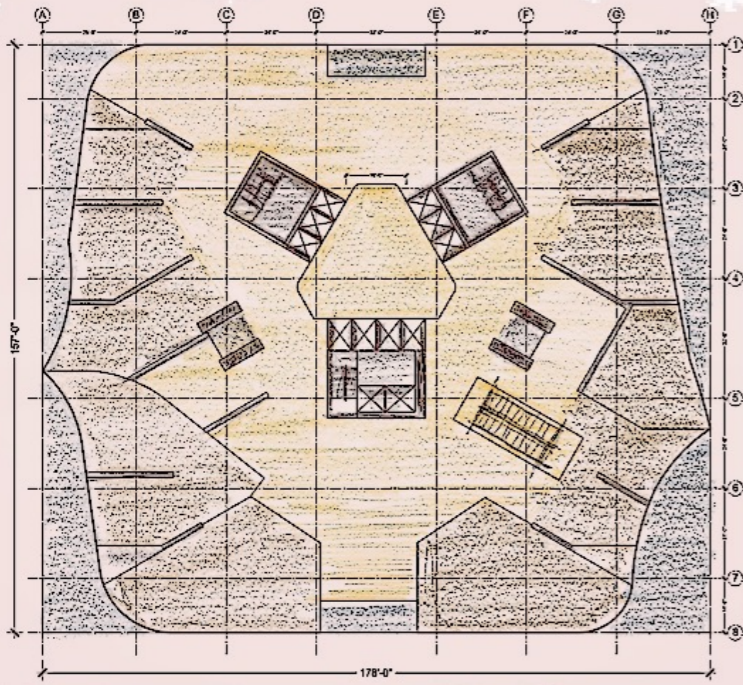


Frames and reliefs enhance shadow- play and texture

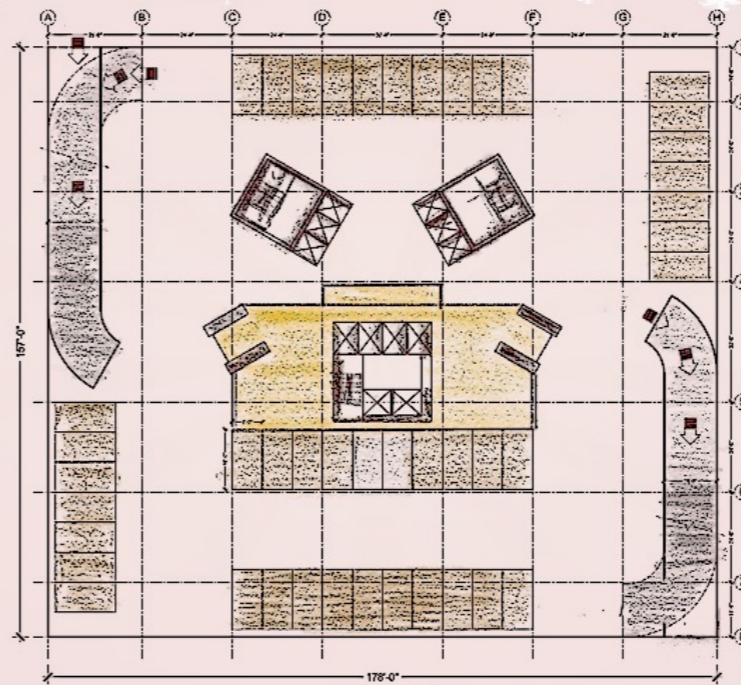
CONCEPTUALISATION



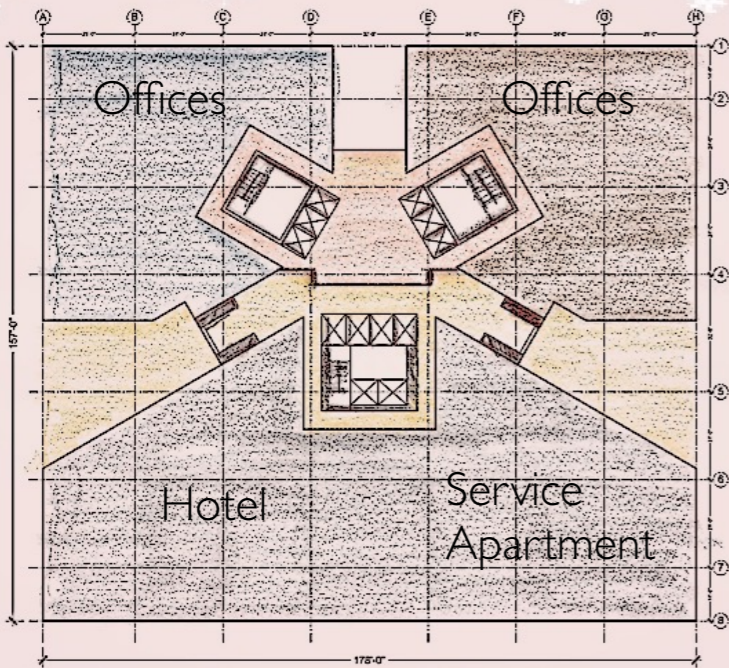
CONCEPTUALISATION



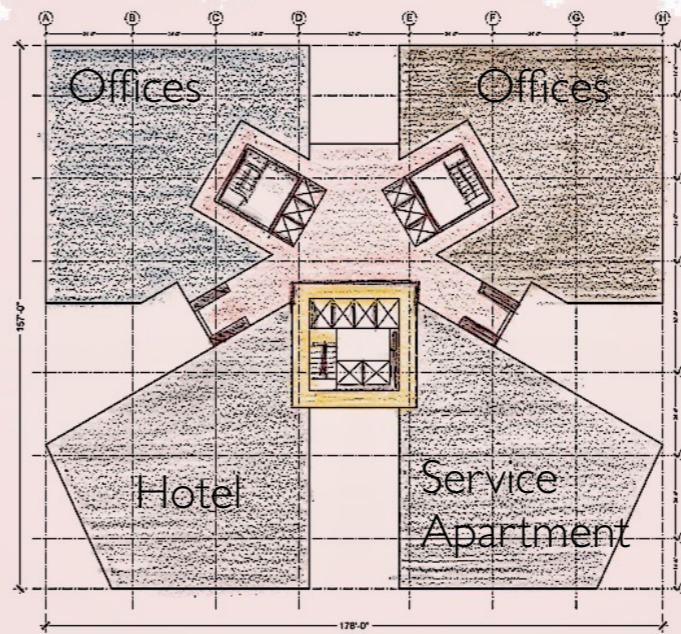
LOWER GROUND FLOOR



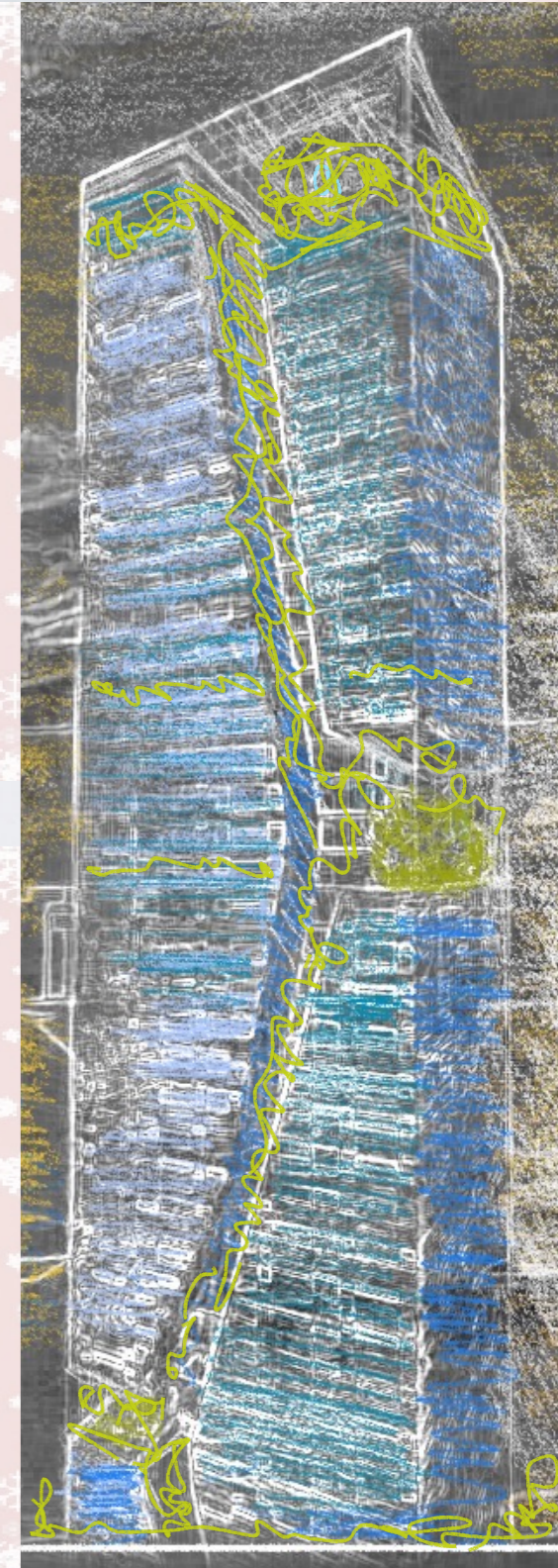
4 X BASEMENT FLOOR



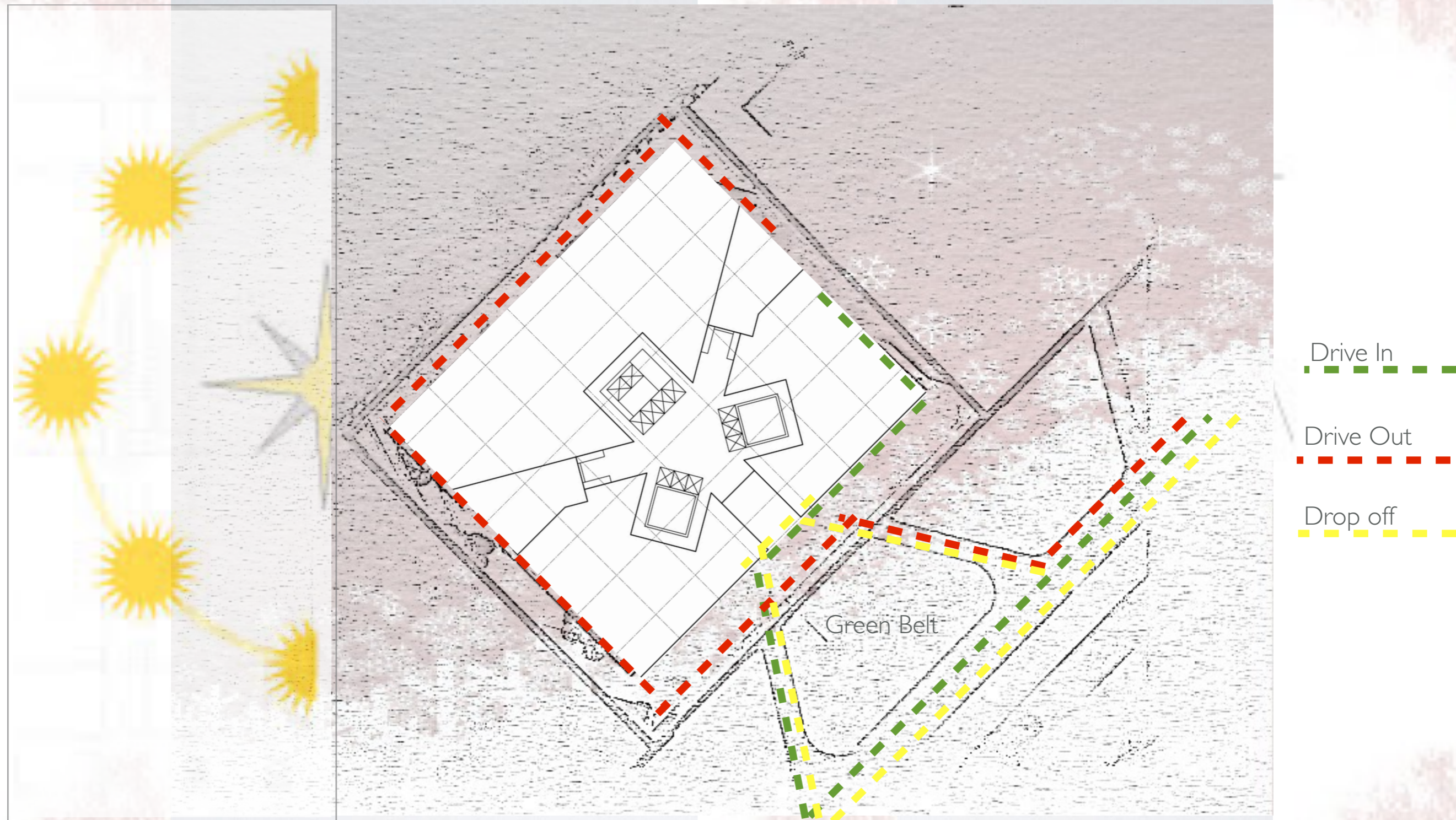
GROUND FLOOR



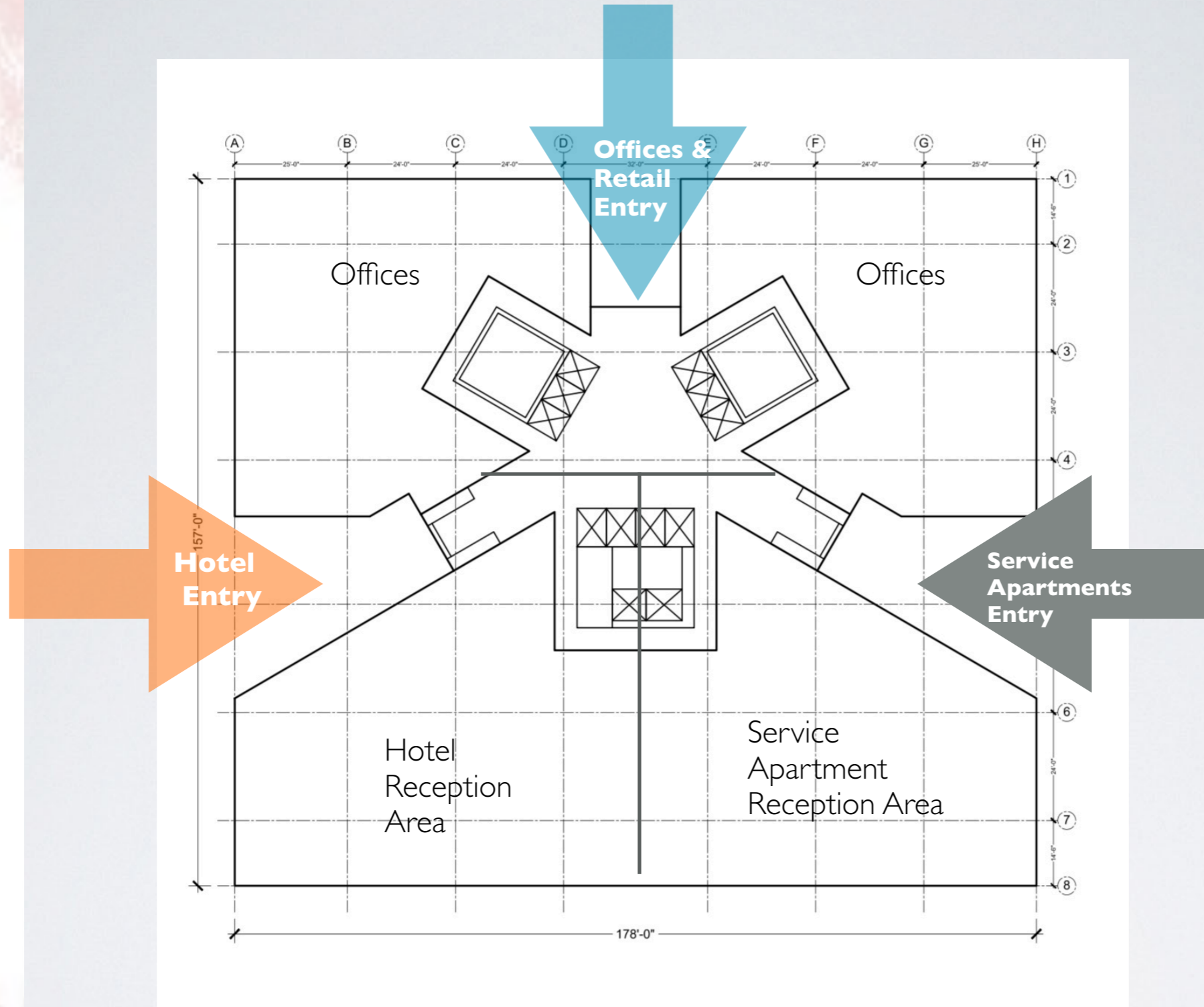
TYPICAL FLOOR



SITE PLAN

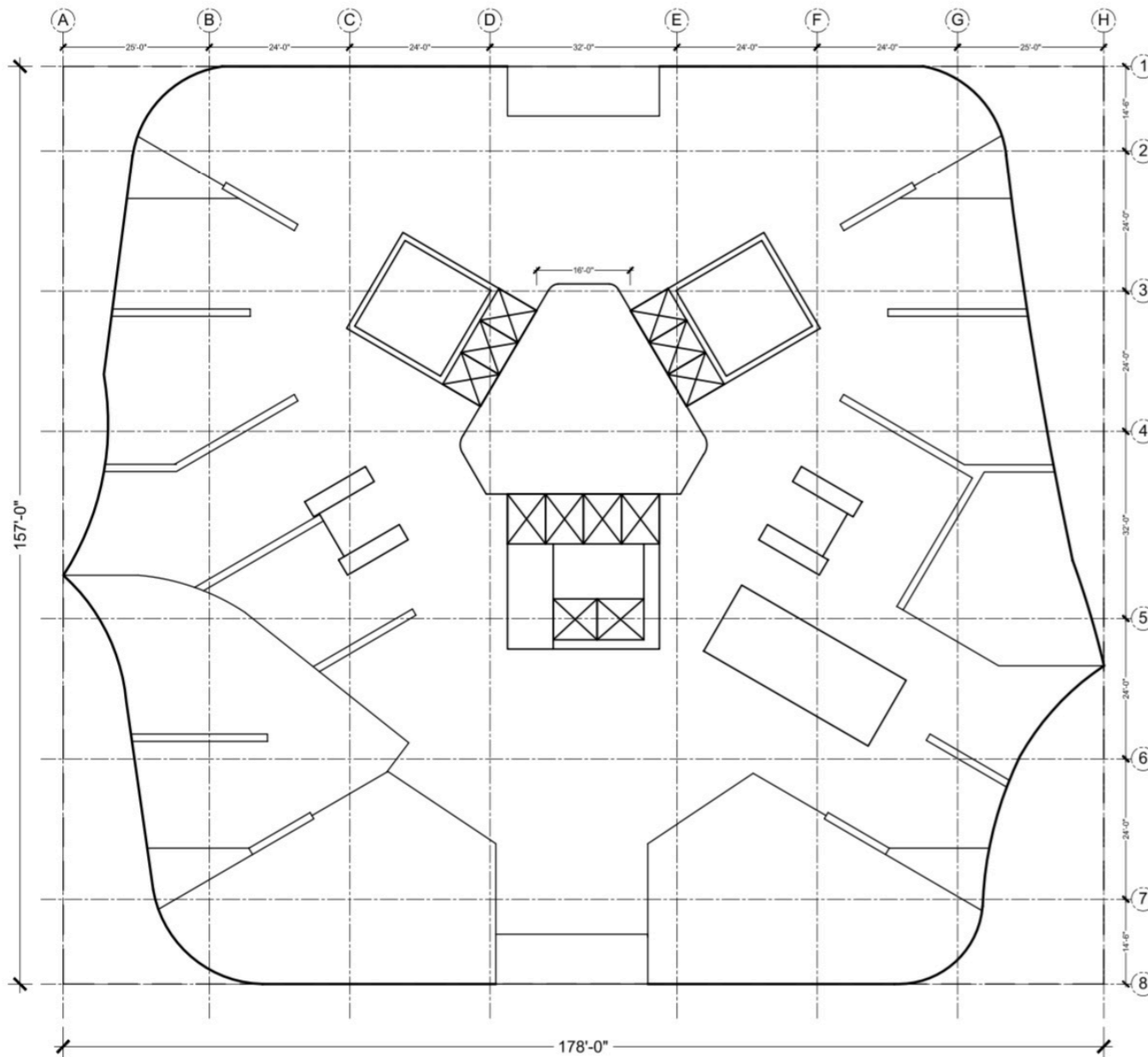


The project constitutes a link between the Askari 5 and the Model Colony Lahore near Walton Airport, this landmark high rise towers as a more irregular and dense urban cluster. The tower's clear structure is also an inspiration for the residence with its layout centred on common spaces on all floors, the new building reinterprets the manageable and human-scaled laid out around common environments – a sort of vertical buildings .



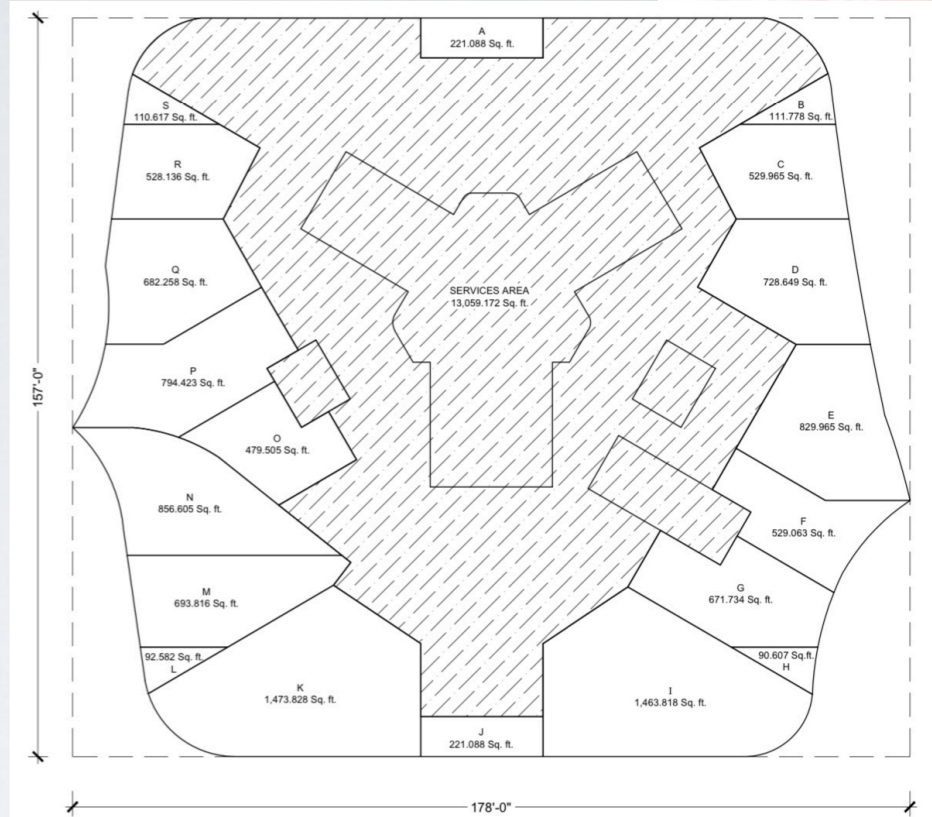
**OFFICE LOBBY & RECEPTION HALL
FOR HOTEL & SERVICE APARTMENTS
GROUND FLOOR PLAN**

Gross Area 24,851 Sq ft
Net Area 18,856 Sq ft

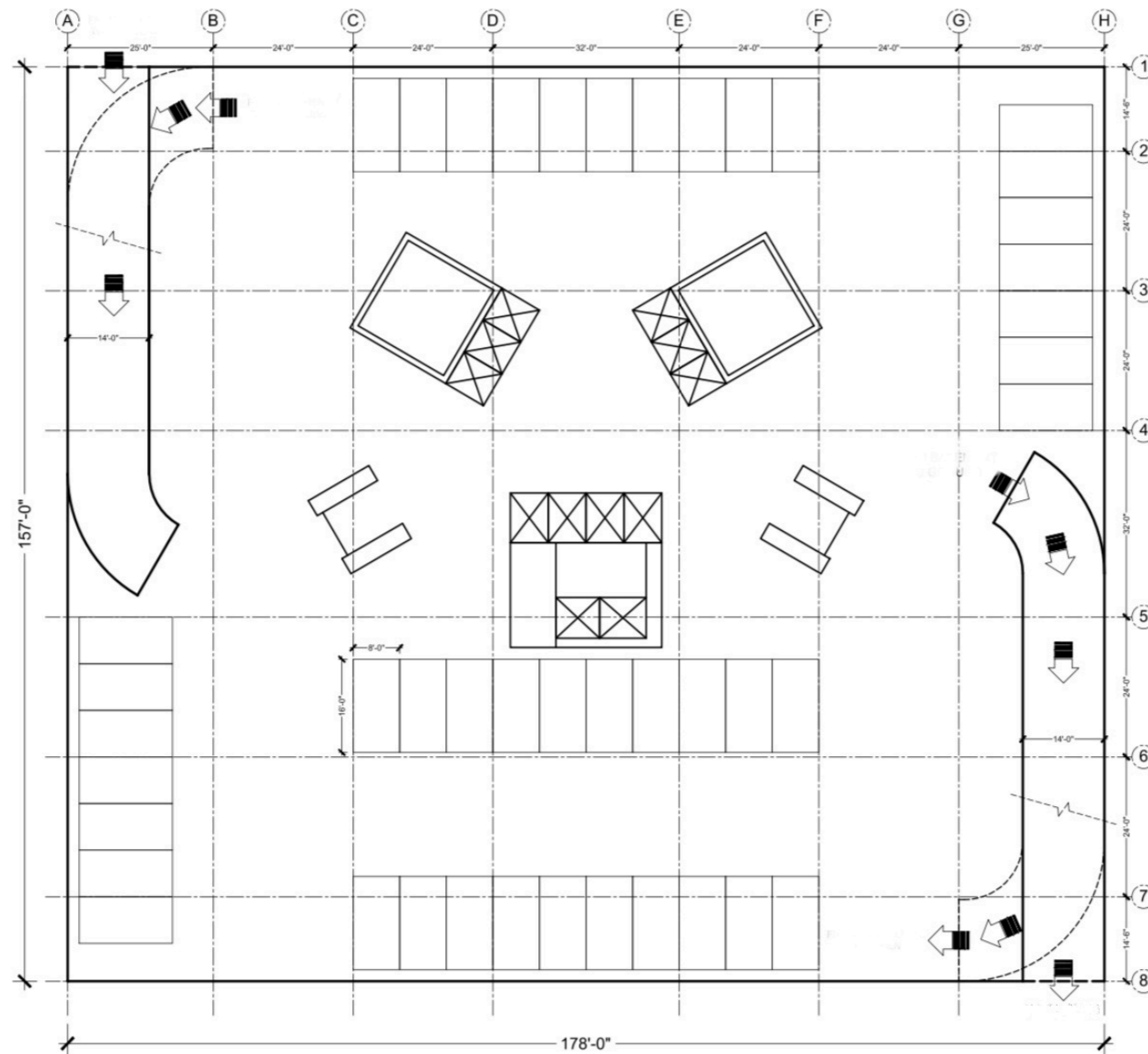


RETAIL & CAFE LOWER GROUND FLOOR PLAN

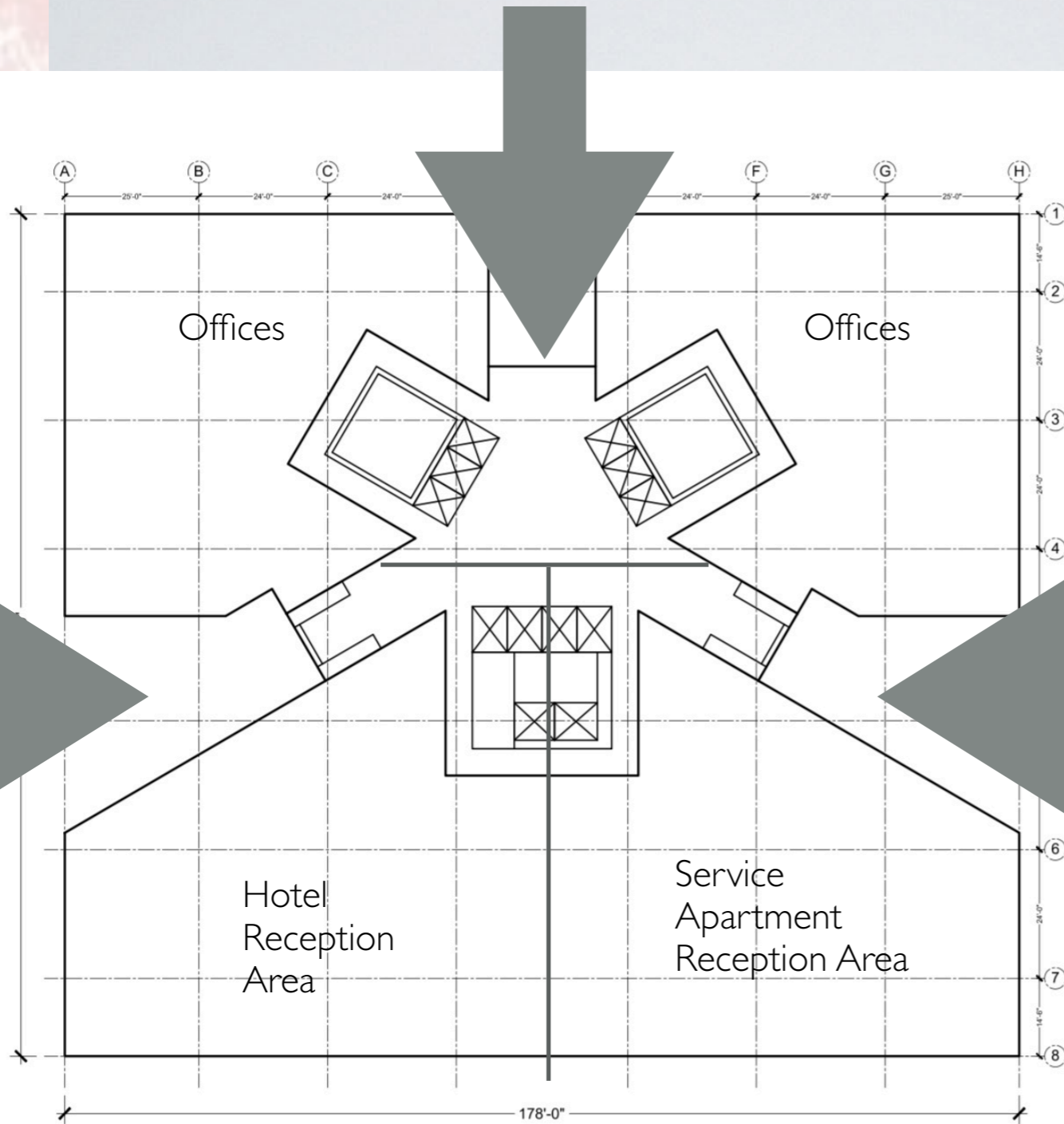
Gross Area 23,968 Sq ft
Net Area 10,909 Sq ft



GROUND FLOOR NET AREA DETAIL:		
A	=	21,088 Sq. ft.
B	=	111,778 Sq. ft.
C	=	529,965 Sq. ft.
D	=	728,649 Sq. ft.
E	=	829,965 Sq. ft.
F	=	529,063 Sq. ft.
G	=	671,734 Sq. ft.
H	=	90,607 Sq. ft.
I	=	1,463,818 Sq. ft.
J	=	221,088 Sq. ft.
K	=	1,473,828 Sq. ft.
L	=	92,582 Sq. ft.
M	=	693,816 Sq. ft.
N	=	856,605 Sq. ft.
O	=	479,505 Sq. ft.
P	=	794,423 Sq. ft.
Q	=	682,258 Sq. ft.
R	=	528,136 Sq. ft.
S	=	110,617 Sq. ft.
TOTAL NET AREA	=	10,909.525 Sq. ft.
SERVICES AREA	=	13,059.172 Sq. ft.
GROSS AREA	=	23,968.697 Sq. ft.

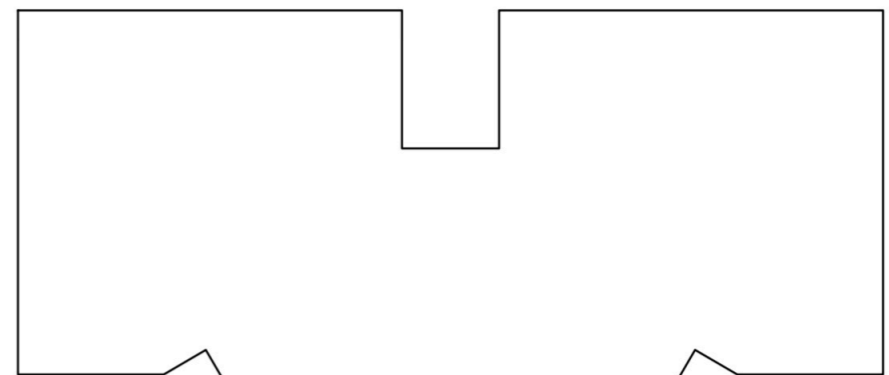
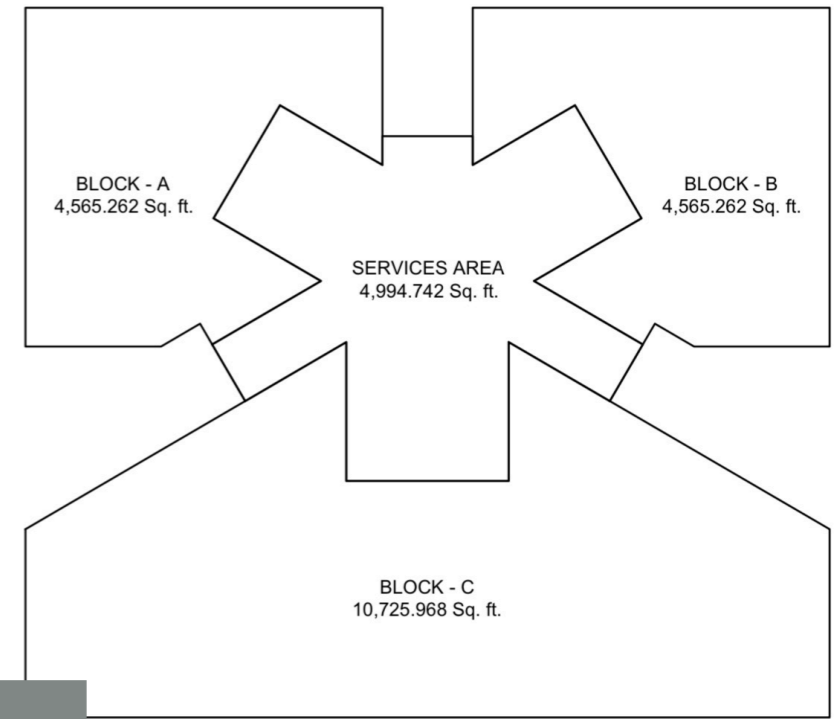


**4 X BASEMENT PLAN FOR
240 CAR PARK SPACE**



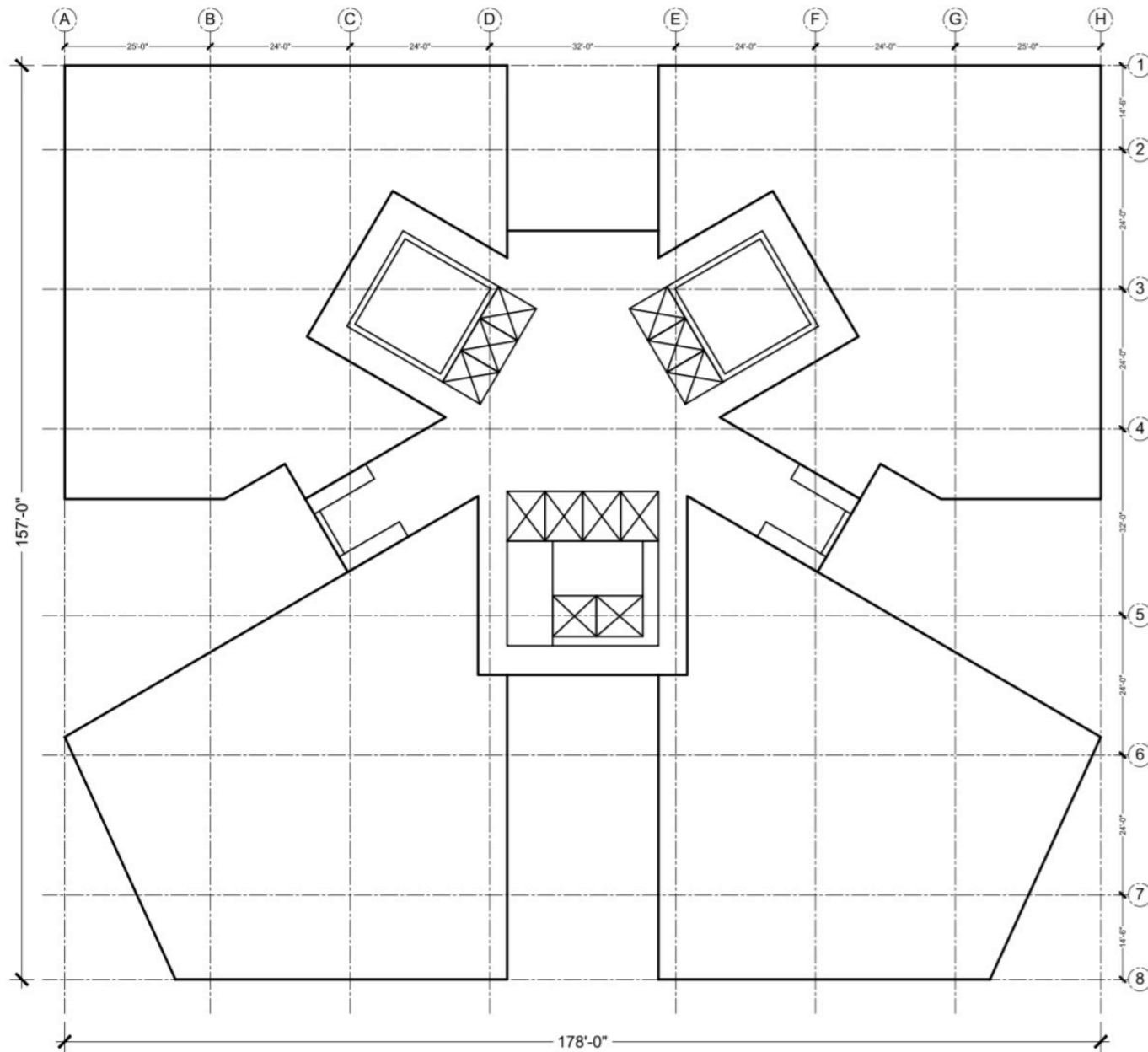
**OFFICE LOBBY & RECEPTION HALL
FOR HOTEL & SERVICE APARTMENTS
GROUND & FIRST FLOOR PLAN**

Gross Area 24,851 Sq ft
Net Area 18,856 Sq ft



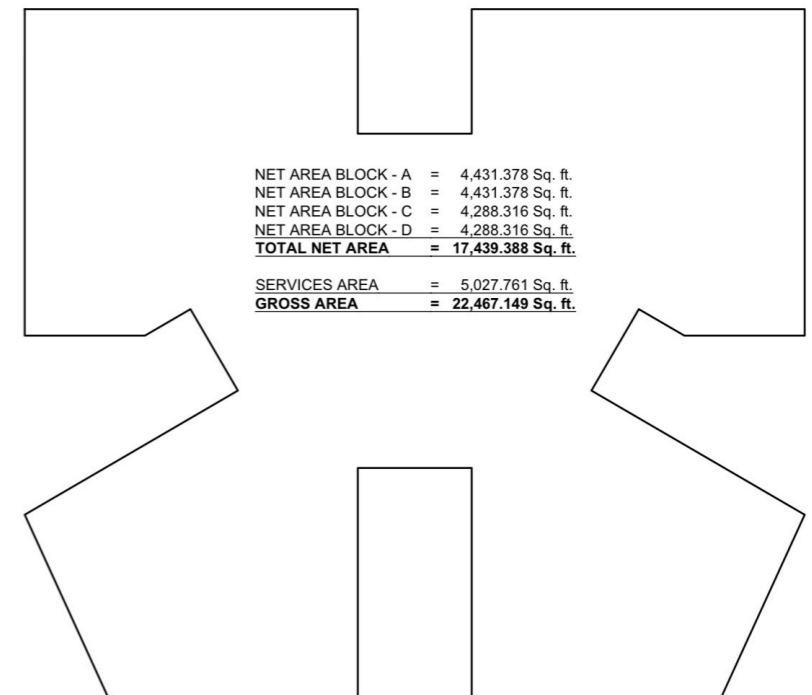
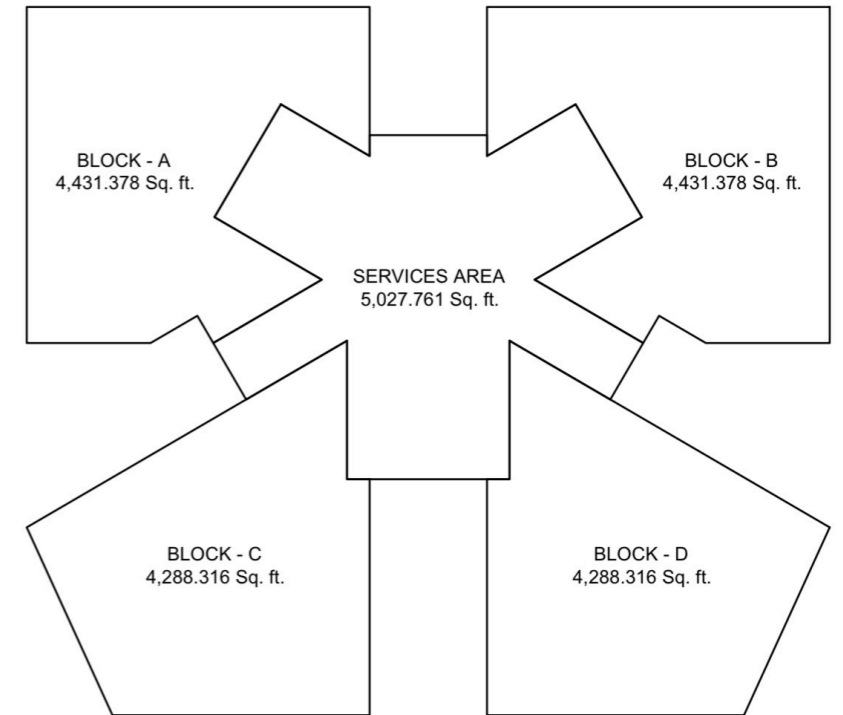
NET AREA BLOCK - A = 4,565.262 Sq. ft.
NET AREA BLOCK - B = 4,565.262 Sq. ft.
NET AREA BLOCK - C = 10,725.968 Sq. ft.
TOTAL NET AREA = 19,856.492 Sq. ft.

SERVICES AREA = 4,994.742 Sq. ft.
GROSS AREA = 24,851.234 Sq. ft.



TYPICAL FLOOR PLANS

Gross Area 22,457 Sq ft
 Net Area 17,440 Sq ft



Schedule of Area

LAHORE DOWNTOWN

Phase 2A 7 Plots

Total Plot Area	5000 SqYds
Or	45,126 Sq ft
Allowable foot Print (60%)	27,075 Sq ft
Allowable Covered Area FAR = 1:15	675,000 Sq ft
Exempted Service & Circulation %	310,024 Sq ft
Allowable Recreation 5%	33,750 Sqft
4 x Basement Retail, Parking & Services Gross Area 27,946 sqft x 4	111,784 Sq ft
Lower Ground Floor Retail Restaurant Gross Area 23,,968 sqft (Net Area 10,909 Sq ft)	23,968 Sq ft
Ground & 1st Floor Restaurant Gross Area 24,851x 2 Sq ft (Net Area 18,856 x 2 Sq ft)	47,936 Sq ft
2nd Floor Technical Floor Gross Area 22,457 sqft (Net Area 17,440 Sq ft)	22,457 Sq ft
3 to 18 Floors Offices & Hotel Gross Area 22,,457 sq ft x16 (Net Area 17,440 Sq ft x 16)	359,312 Sq ft
19th & 20th Floors Technical Gross Area 22,457 sq ft x 2 (Net Area 17,440 Sq ft x 2)	44,914 Sq ft
21st & 22nd Floors Wellness Gross Area 22,457 sq ft x 2 (Net Area 17,440 Sq ft x 2)	44,914 Sq ft
23rd -29th Service Apartments Gross Area 22,457 Sq ft x 7 (Net Area 17,440 Sq ft x 7)	157,199 Sq ft
30th Floor Technical Gross Area 22,457 Sq ft (Net Area 17,440 Sq ft)	22,457 Sq ft
31st & 36th Service Apartments Gross Area 22,457 Sq ft x 6 (Net Area 17,440 Sq ft x 6)	134,742 Sq ft
37 Sky Bar / Restaurants Gross Area 8,862 Sq ft (Net Area 8,862 Sq ft)	3,850
Total	973,533 Sq ft
Less Circulation, Services, Ramp , Parking Etc	310,024 Sq ft
Net Total	672,369 Sq ft

LAHORE DOWNTOWN



Thank You