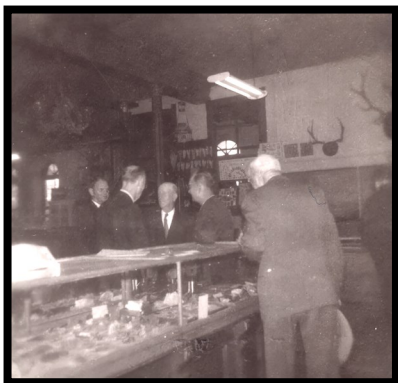


Vår Historia

SMOKY VALLEY HISTORICAL ASSOCIATION NEWSLETTER

60 YEARS OF SVHA

Museum in Old Main prior to moving to Runbeck Mill



PUBLISHED BI-MONTHLY

CONTENTS

| | |
|---------------|---|
| 60 Years | 1 |
| 60 Years | 2 |
| SVHA cards | 3 |
| SVHA Programs | 3 |
| Donations | 3 |
| SVHA Info | 4 |

Many of Lindsborg's prominent figures in the 20th century have more than one thing in common, one of which is belonging to this historical society. When Lindsborg Historical Society formed in 1919, names like Dr. C.P. Eklund, Berger Sandzen, Prof. E.O. Deere, G.N. Malm, William Hagstrom, Charles Ferm, and many others were at the forefront of the establishment and work.

After Coronado Heights was sold to Saline County in the early 1930s and various other projects were completed, the society somewhat faded away and was quickly replaced with WWII and war relief. The sale of Coronado Heights had one stipulation, that if at anytime Saline County either neglected to take care of the park or just didn't want it anymore it must be sold back to the society or its successor for the same amount of the original sale, which was \$1.00.

Talks started about reforming the historical society in August 1963 in downtown coffee houses with Malcolm Esping, John Heline, and Gene Larson. A special meeting was planned for October 22nd to determine whether to reorganize the old society or form a new one. It was decided to form a new one in order to expand membership beyond Lindsborg. A committee of five, led by Elizabeth Jaderborg, was appointed to research the former Lindsborg

historical society. Elizabeth Jaderborg traveled to Topeka to find the previous charter, which there were two on file with the Kansas Historical Society, 1920 and 1932. These became the basis for the SVHA charter.

November 5th, 1963 a group of people from neighboring towns and Lindsborg met at the Lindsborg Rural High School library and formally organized Smoky Valley Historical Association (SVHA). Present at that first meeting were people from Fremont, Assaria, and McPherson as well as the many Lindsborg folks. Elizabeth Jaderborg had drawn up a constitution, which was revised and accepted, plus had a list of names for candidates to be on this new board.

At this meeting four items were discussed in detail:

1. Prepare early for the Centennial.
2. Acquire land on which to place permanent exhibits (possibly the land east of the swimming pool).
3. Think about Smoky Valley Village made up into permanent exhibit by historical buildings of the community and the valley.
4. Affiliate with the Kansas State Historical Society.

We know that Smoky Valley Village became "Heritage Square" and still sits on the land acquired by SVHA and Old Mill Board.

Ten days later, or the 15th of Novem-

60 YEARS OF SVHA {CON'T}

ber, a second meeting was held for elections, still in the high school library. Among the elections were: Amos Glad -President, Abner Lundquist, Alba Malm, and Carl Peterson—Vice Presidents. Lucille Runbeck - Curator, Elizabeth Jaderborg - Secretary, and Leonard Nelson - Treasurer. Along with officers, five committees were established: Membership, Education, Finance, Publicity, and Research. Each committee had 4-7 members assigned to it, and names like Joe Levin, Dr. Lungstrom, Chester Abercrombie (*father of future President Chris Abercrombie*), Ruth Billdt, and Malcolm Esping were among those.

Nov. 22nd, 1963 Dr. Emil O. Deere was unanimously voted in as a lifetime honorary member. He was the only living member of the original Lindsborg Historical Society Council. At the first general meeting (*open to all*) January 7th, 1964, Dr. Deere was formally presented with the membership, which he gave a short speech and reflected on the previous society.

The 1960s were a busy time with building new, which often meant tearing down old. Talks had started early about salvaging historic buildings, which included Bethany Academy and the Swedish Pavilion at Bethany College. Old Main was also on the demolish list, and Abner Lundquist, Arthur Lindquist, and Elizabeth Jaderborg were tasked to clean out Dr. E.O. Deere's office and move to what would become a new museum located in the old Runbeck Mill. The Old Main Museum was also relocated to the Mill at this time.

SVHA instigated changing the spelling of Olsson and Swensson street signs in Lindsborg, they originally had one "s" instead of two.

The first historic building to be relocated to the new land acquired for the complex (*Heritage Square*) was the West Kentuck school house in March of '67. It was in the way of a new interstate so was donated to both SVHA and McPherson Historical Society, which after relocating the keys were handed over to the newly formed Old Mill Park Board.

Mayor Fritz Carlson pushed to tear down the blacksmith shop on Main Street in 1967, which SVHA countered with its historic value. A Betha-

ny student attempted to open a coffee house in the blacksmith shop, but "city fathers" frowned on the idea. Mayor Carlson just wanted it gone as it was an eyesore, he thought it would make a good parking lot. The next time you are in Blacksmith Coffee Shop, give a quick thanks to SVHA for winning that battle.

Each historic building that got moved to Heritage Square was refurbished then donated to the Old Mill Complex, then came refurbishing the Old Mill itself. Some of the key figures in this project were Mary Borg, Malcolm Esping, and long-time board member (*40+ years*) Dr. Duane Fredrickson. The amount of volunteers that made all of these restorations and relocations possible are too numerous to mention, so I probably should have started with that disclaimer.


The 1970s were focused on getting the Swedish Pavilion ready for the King's visit, the 1976 Centennial, Old Mill restoration and helping maintain Coronado Heights, even though that was still owned by Saline County. More historic buildings were donated and moved to Heritage Square, filling it to what it is today.

The 1980s celebrated an operatable mill and museum, plus creating Smoky Valley Historical Publications which published at least six books between 1984 and 1995 with historian/writer A. John Pearson taking charge. Chester Bruce was on the SVHA Council during this time, and as a high school history teacher also implemented students writing about our history, and SVHA sponsoring contests for history papers. SVHA also continued to interview and record the aging people of the Smoky Valley for prosperity. Some years later President Chris Abercrombie continued historic interviews on video.

March 1st, 1987 SVHA regained ownership of Coronado Heights from Saline County, following the original sale agreement, and later took ownership of Hoglund Dugout.

It is clear that this newsletter isn't big enough to get through sixty years of SVHA history, but it is clear that SVHA is, and has always been important enough for people to volunteer time and resources to get the tasks done. Both work, and rewards never end. Congratulations SVHA on 60 years of preservation and education.

1960s Membership Card

| | | |
|---|---|---|
| <p>Is a member of the SMOKY VALLEY HISTORICAL ASSOCIATION, Inc. which has headquarters in Lindsborg, Kansas</p> <p>Was born in a log cabin () Was born in Sweden () Great-grandparents came from Sweden () Forefathers were here before the Swedes () Great-grandparents homesteaded in the Valley () Attended one-room school () Attended Bethany () Has worked at The Old Mill in operation () Has sung in the Messiah Chorus ()</p> |  <p>SMOKY VALLEY HISTORICAL PUBLICATIONS The Smoky Valley Historical Association Lindsborg, Kansas</p> | <p>Date <u>April 5, 1965</u></p> <p>Active () Sustaining () Life () Junior () Membership \$ <u>1.00</u> Initial () Annual ()</p> <p>Signed <u>Dorothy Giegler</u> Membership committee</p> |
|---|---|---|

Upcoming SVHA Programs

Nov. 14th, 2023

"Little Poova" Remembers Doc Bill (Dr. William Holwerda)

Betty Holwerda Nelson

Jan. 9th, 2024

History of Muse—the Stories Behind the Sculptures

Susan Whitfield

March 12th, 2024

Karl Thomson—Lindsborg's Dane

Steve Borell

All programs
start at:
7:30 pm

Location:

Messiah Lutheran Church—Fellowship Hall
402 N. 1st Street—Lindsborg, KS.

Please cut along the dotted line

Smoky Valley Historical Association
P.O. Box 255
Lindsborg, KS. 67456

☐ \$25 ☐ \$50 ☐ \$100 ☐ Other \$ _____

Name: _____ Date: _____

Address: _____

City: _____

State: _____ Zip Code: _____

Phone: _____ Email: _____

Memberships are renewed in the first quarter of each year

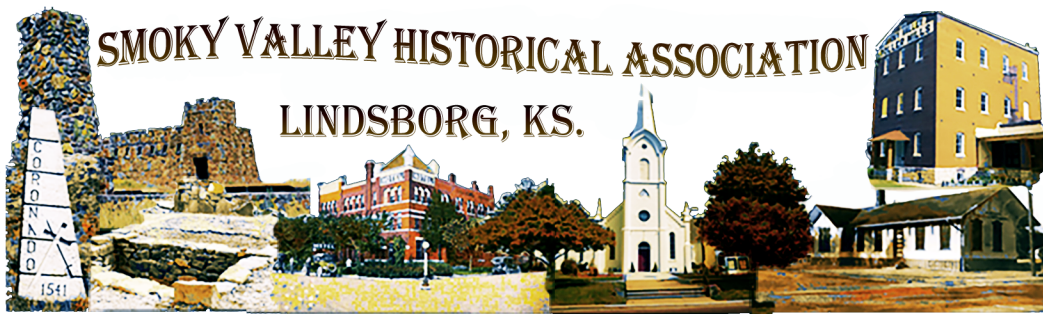


Smoky Valley Historical Association is a non-profit organization and is registered under 501(c)3

All Membership Donations, Bequests, Trusts, and Legacy Donations are tax deductible.

Please mail to P.O. Box listed above.

Thank You!



SMOKY VALLEY HISTORICAL ASSOCIATION

BOARD OF DIRECTORS

Tim Stewart - *President, Newsletter*
 Vince Rocco - *Vice President*
 Julie-Ann Neywick - *Secretary*
 Lenora Lynam - *Treasurer*
 Elly Ostlind - *Program Chair*
 Leland Nelson - *Property Manager*
 Christine Rocco
 Cathy Ahlstedt
 Betty Amos



Smoky Valley Historical Mission

The purpose of this association shall be to collect, arrange and preserve historical data, books, pamphlets and manuscripts pertaining to the early history and settlement of our community in general and the City of Lindsborg in particular; to preserve and beautify places of historical interest in our city, its vicinity, and properties entrusted to the association; and to promote the study of history of our settlement and its cultural growth by lectures and other available means.

Contact info:

email us at:

info@lindsborghistory.org

or mail to:

SMOKY VALLEY HISTORICAL ASSOCIATION
 PO BOX 255
 LINDSBORG, KS 67456

WWW.SMOKYVALLEYHISTORY.ORG



TACK SÅ MYCKET!



SMOKY VALLEY HISTORICAL ASSOCIATION
 LINDSBORG, KANSAS 67456

Bumper Stickers
Available at Old Mill!

Meetings/Programs

Smoky Valley Historical Association hosts bi-monthly meetings on the odd months, held on the second Tuesday. Programs start at 7:30 pm with topics of local historical interest. Location is listed on page three along with schedule.

Come join us!



Funding

Membership contributions are the SVHA's major source of on-going funding. A free-will donation in any amount will secure your membership in the Association for the year. Memberships are renewed in the first quarter of each year.

Grants, such as those awarded by the Kansas Humanities Council, are also available from time-to-time to further the mission of the SVHA.

Check our Facebook page for the most up to date information concerning the Smoky Valley Historical Association.



Thank you for your contributions, and supporting the historical preservation of Lindsborg and the Smoky Valley of Central Kansas.

Our pioneers left their legacy long after they were gone, so can you. Managing estates, bequests, and gifts through retirement plans can help keep our preservation ongoing and long-lasting.

All donations are tax exempt, we are a 501-(c)3 organization