

Vår Historia

SMOKY VALLEY HISTORICAL ASSOCIATION NEWSLETTER



PUBLISHED
BI-MONTHLY



CONTENTS.

Coronado Heights	1
New Deal 1930s	2
New Deal can't	3
T-shirt sales	3
Donations	3
SVHA Info	4

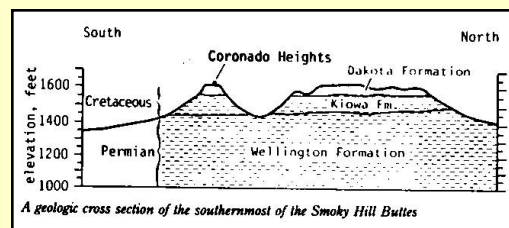
IS THIS THE END OF CORONADO HEIGHTS?

Now that I have your attention, the answer is “no”, this is not the end of the beloved park. It is however, a major setback from our original “phase 2” renovation project which included re-constructing the drainage and paving the road. Given the current status of a landslide, with an almost three foot drop near the memorial monument, we were forced to close Coronado Heights Park until further notice. This fault line extends well beyond the road and nearby trail, and has also jeopardized the stability of the monument itself. For this reason the park is also off-limits to all hiking and bicycling.



This has also caused us to postpone the 100th celebration that was re-scheduled for July. Before we can build up the road to where it is drivable, we need to make sure the ground is stable. This will require much analyzing and planning before any construc-

tion can be started. Please be patient. The location of the slip, or drop appears to be where the Dakota and Kiowa foundations meet, as seen in this diagram.



The Dakota foundation is the sandstone that has been used for many WPA and historical buildings in the Smoky Valley, including the castle and picnic rings on Coronado Heights. The Kiowa foundation is made up of shale, which can possibly shift if altered, like with excessive water draining in the core of the butte, instead of down the side. Water continues to seep out of the hill toward the bottom long after rain has fallen, more slip-page is possible. Donations to help repair this and get Coronado Heights back open can be made through our website listed at top of page.



NEW DEAL 1930s

“WPA” These three initials get mentioned quite a bit, especially with Coronado Heights, but just what, or who was this, and what all benefited in Lindsborg from it?

During the depression of the 1930s, the Nation was in a crises. Work was hard to find, banks were closing, and to top it off, the dust bowl wreaked havoc on everything in it's path. Franklin D. Roosevelt was elected President of the USA under the promise of a “New Deal” plan, and under this plan a multitude of organizations were formed, some of which are still going today. FDR based his ideas on the three “R”s—Relief, Recovery, and Reform. To create jobs, programs like Works Progress Administration (WPA), Civilian Conservation Corps (CCC), and Public Works Administration (PWA) were established.

Since Coronado Heights was placed in Saline County's possession during this time, they underwrote the WPA work to create the castle and all rock features throughout the park. For Lindsborg, the first WPA project was the band shell, though in March of 1936 Lindsborg's City Council made a formal application for WPA funds to build a two-story art gallery at a projected cost of \$15,000.00. Dr. Birger Sandzen was going to donate the lots to build on, that were just north of his residence. It would be another 20 years before the gallery came to life.

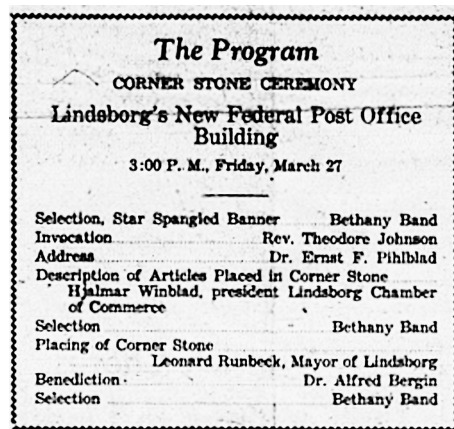
January 1937 eight men were hired to start digging, the foundation for the basement to a new band shell had officially started. Their tools were shovels and wheelbarrows, and frigid weather jeopardized the job day to day. C. A. Lagergren had been appointed foreman, but Neal Parr, the area engineer, was in charge of the project. All WPA projects for this area came out of Salina, or WPA's 3rd

District. C. W. Helstrom oversaw the 3rd District and most likely approved or disapproved project requests. As he stated in a speech later that fall, the WPA can't initiate projects, that has to come from communities or organizations. For the band shell, Lindsborg was going to be paid \$700 for native stone and rock already on hand. An estimate by the WPA revealed this project was equal to 144 “man months”, or 12 men working for 12 months, and projected the total cost at \$11,149.72. It didn't take 12 months, in fact by July it was completed enough to host its first concert. The Lindsborg High School Band, directed by Mr. Royal Claycomb, gave the performance. It drew a large crowd as many wanted to test the sound and lighting, which exceeded any expectations. In fact, the sound carried so far even the softer playing was heard a half a block away downtown Main St. The formal dedication of the Swenson Memorial Band Shell didn't take place until September 22nd, 1937. Bethany Band played and many speeches were given, the whole dedication was aired live on KSAL through a leased wire. Lindsborg Chamber provided coffee and everyone brought their own basket picnic to this well attended event.

The second WPA project for Lindsborg was approved in July of '37, as they wanted the band shell project to be completed before starting new. This project was applied for by the Lindsborg Board of Education at a cost of \$3,506.08 and set out to improve the school playground. It included an underground concrete culvert that would expand the play area in place of a ditch, rock wall to make it safer for kids playing near the street, and concrete sidewalks. WPA covered all labor costs, or \$1,888.00 of this and the school board covered supplies. Superintendent LaVern Soderstrom was made Project Supervisor.

A different kind of New Deal project that started March 1936 was the Lindsborg Post Office, which was funded by the Federal Treasury Dept. The corner stone was laid with a very big dedication, and a surprise tucked away inside. The hollowed out concrete corner post is home to a box that was sealed away for future generations. It included local and Bethany College newspapers for that week, histories of every known organization in Lindsborg, past or present (*including Lindsborg Historical Society*), books, photos, history of Lindsborg post offices and Lindsborg itself, history and records of the public

schools, and even a "greetings" letter from the corner stone committee addressing future generations. When the building was completed, Sandzen was commissioned to paint a mural to showcase the now historic building.



Get your commemorative t-shirts while they last! These blue on blue shirts feature Coronado Heights 100th logo for 2019.

Buy yours now at Old Mill Museum's gift store 120 E. Mill St. Lindsborg, KS. 67456

Shipping/handling fee applies

Call 785-227-3595 for quote

**T-shirt
is only**

\$10



Please cut along the dotted line

Smoky Valley Historical Association
P.O. Box 255
Lindsborg, KS. 67456

☐ \$25 ☐ \$50 ☐ \$100 ☐ Other \$ _____

Name: _____ Date: _____

Address: _____

City: _____

State: _____ Zip Code: _____

Phone: _____ Email: _____

Memberships are renewed in the first quarter of each year

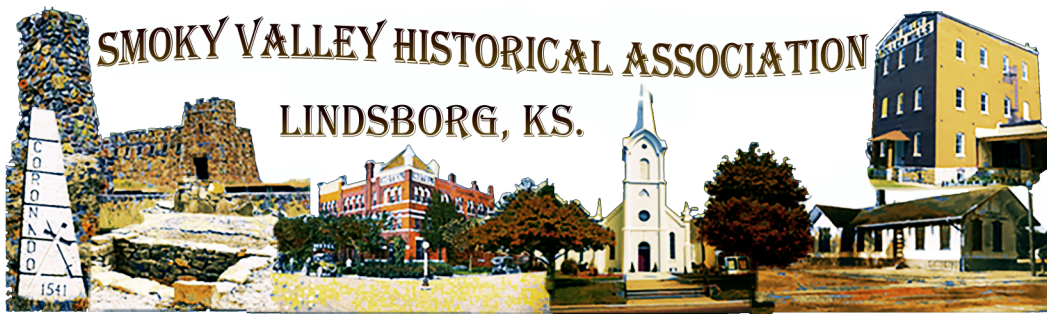


Smoky Valley Historical Association is a non-profit organization and is registered under 501(c)3

All Membership Donations, Bequests, Trusts, and Legacy Donations are tax deductible.

Please mail to P.O. Box listed above.

Thank You!



SMOKY VALLEY HISTORICAL ASSOCIATION

BOARD OF DIRECTORS

Tim Stewart - *President, Newsletter*
 Robert Ahlstedt - *Vice-President*
 Julie-Ann Neywick - *Secretary*
 Lenora Lynam - *Treasurer*
 Elly Ostlind - *Program Chair*
 Matt Stula
 Leland Nelson
 Jim Malm
 Chester G. Peterson - *Emeritus*
 Duane Fredrickson - *Emeritus*

Interested?

We have one BOD position open.

Meetings

We have bi-monthly meetings from September thru May and held on the 2nd Tuesday of the month at Bethany Home. All meetings are in the Activities Room. There are five meetings per academic year (Sept.-May). Program starts at 7:30 p.m. with topics of local historical interest. Come join us!



Funding

Membership contributions are the SVHA's major source of on-going funding. A free-will donation in any amount will secure your membership in the Association for the year. Memberships are renewed in the first quarter of each year.

Grants, such as those awarded by the Kansas Humanities Council, are also available from time-to-time to further the mission of the SVHA.

Smoky Valley Historical Mission

The purpose of this association shall be to collect, arrange and preserve historical data, books, pamphlets and manuscripts pertaining to the early history and settlement of our community in general and the City of Lindsborg in particular; to preserve and beautify places of historical interest in our city, its vicinity, and properties entrusted to the association; and to promote the study of history of our settlement and its cultural growth by lectures and other available means.

Contact info:

e-mail us at:

info@lindsborghistory.org

or mail to:

Smoky Valley Historical
Association, Inc.

PO Box 255

Lindsborg, KS 67456

Check our Facebook page for the most up-to-date information concerning the Smoky Valley Historical Association.



Thank you for your contributions, and supporting the historical preservation of Lindsborg and the Smoky Valley of Central Kansas.

Our pioneers left their legacy long after they were gone, so can you. Managing estates, bequests, and gifts through retirement plans can help keep our preservation ongoing and long-lasting.

Is a member of the
SMOKY VALLEY HISTORICAL ASSOCIATION, Inc.
which has headquarters in Lindsborg, Kansas

Was born in a log cabin
Was born in Sweden
Great-grandparents came from Sweden
Forefathers were here before the Swedes
Great-grandparents homesteaded in the Valley
Attended one-room school
Attended Bethany
Has worked at The Old Mill in operation
Has sung in the Messiah Chorus

TACK SÅ MYCKET!



SMOKY VALLEY HISTORICAL ASSOCIATION
LINDSBORG, KANSAS 67456