

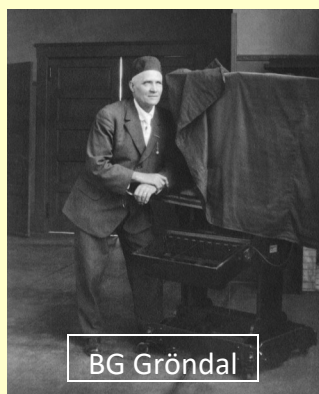
Vår Historia

SMOKY VALLEY HISTORICAL ASSOCIATION NEWSLETTER

PHOTOGRAPHY—LINDSBORG CAPTURED ONE FRAME AT A TIME



PUBLISHED
BI-MONTHLY



BG Gröndal



Photography	1
Photography	2
Coronado Heights	2
2018-'19 Program	3
Donations	3
SVHA Info	4

Welcome to another issue of "Our History". I read a great deal to both learn and get a sense of Lindsborg and the Smoky Valley's early days, but it's photographs that takes me back. Maybe it's due to my own passion for photography, maybe it's just seeing peoples expressions, architectural designs, or dirt streets that have long been paved. Either way, what I want to share with you isn't the history of photography, there are plenty of books about that, but the Photographers that have left their vision over the years in Lindsborg.

To my knowledge, the oldest photos at the McPherson Co. Old Mill Museum date around 1878, and are in the form of a stereoview, or side by

side image with slightly different focus. Viewed through a stereo-scope it gives a 3-D image. In the fall of 1878 Abilene Photographer S.W. Lewis set up a tent in Lindsborg and stayed for a full month. The next April he came back and set up across from Mrs. Curtis' Millinery store, also staying for a few weeks before moving on. The summer of 1880 saw another traveling photographer, G.W. Stiffler and his son, who set up for a few weeks before moving on to Colorado where they set up an established business.

Lindsborg's first photography studio and full-time photographer came in Dec. 1882. Sam Luce had learned the trade from Harry Cole, who had Cole's Art Gallery in Min-

neapolis, KS. A

piece of interesting information about Cole is that he won a \$50 prize and award in 1900 for successfully capturing a moving tornado on film. Luce set up his studio in the Ober and Hageman building on the corner of Main and Grant, what we know is now a parking lot. Sam Luce stayed in business for three years before selling to Charles Lander and Thomas Kelley, who sold it to Harry Olivant two years later.



Lindsborg 1878

July 1887 Lindsborg had another photographer set up a studio, this one hand picked by Dr. Swensson to come to Lindsborg from Round Rock, TX.

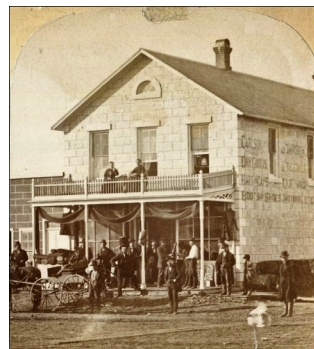
PHOTOGRAPHY (CON'T)

B.G. Gröndal is one of the best known photographers in Lindsborg, and rightfully so, having captured the community and Bethany College for fifty nine years.

Olivant closed his studio some time after Gröndal came to town, even though they were opposite ends of Main. Through a series of sales over the years, Gröndal's studio can be traced to earlier this year, when Jim Turner closed his studio on Main St. Gröndal sold his studio to Lenn Nelson in 1946, who had established his business in 1943. Just one year later, 1947 Nelson sold his photography business and studio to Dale Hoag, who continued it for 24 years, or 1972 when Jim Turner bought it. Even though Jim closed his studio, he continues his photography, even after 46 years (so far). Other long term photographers in Lindsborg were Albert Lundquist and Rudolph Lindstrom, who had a studio from 1915 to sometime in the '50s, and Tom Jaderborg, whose studio behind the Swedish Crafts operated from 1988 to 2011.

It had occurred to me that with the closing of Jim

Turner's Brick Street Gallery, a chapter had closed in Lindsborg. There was no longer a Main street store-front photography studio. That is not to say this community isn't blessed with Photographers, including having National Geographic Photographer Jim Richardson. In this digital age, shooting in a home studio or on location and post processing on a computer from home or laptop in a coffee shop is far more convenient. As a historian, I am always looking for 19th century photos of the Smoky Valley, buildings and storefronts especially. Very few photos from the first fifteen plus years of Lindsborg exist at all.



1878 photo of
Carlson-Johnson store in Lindsborg
one side from stereoview

CORONADO HEIGHTS AT 100

The buttes north of Lindsborg have always been fascinating, enough so that the Swedish Agricultural Society placed their first community house at the foot of it. It was relocated to the current site of Lindsborg shortly after, seeing the need for the river. John Ferm, President of the Swedish Ag Co. and first County Commissioner, owned much of the butte and would take guests up to the top to see the valley, as he did April 1878 with McPherson guests along with his brother, Charles Ferm, who was County Attorney at that time. Skip past 41 years to 1919, A long list of names got together to

form the Lindsborg Historical Society. The 1st objective was to purchase or lease the butte and build an enclosed picnic area. William Hagstrom and Prof. E.O. Deere come up with the name while sitting atop the butte watching the golden grain waving in the valley. Both thought maybe that was the "gold" Coronado found when he got to this area, in a light-hearted moment.

Coronado Heights is still a main attraction in the valley, whether having a picnic in the castle or riding a bicycle on one of the trails, it also needs upkeep and repairs. Lets make its 100th anniversary this 2019 a grand one by helping meet phase 2.

We ♥ Coronado Heights

Water Drainage, Road Repair, and Misc. Phase 2

- As with the castle and picnic areas, the original drainage system is over 80 years old!
- Original drains will be cleaned and replaced with stronger corrugated metal pipe
- Some drains will be increased from 18" to 24" for maximum water flow.
- Water will be diverted at top of Coronado Heights to help flow out North side, away from access road.
- Road smoothed and surfaced, possibly with chipseal or asphalt.
- Install security, motion-censored trail cameras to help divert vandalism.
- Inspect and repair Olson stairway and picnic areas.

Suggested Giving Levels

Elizabeth Jaderborg level Up to \$99.99

Mrs. Elmer Jaderborg was instrumental in reorganizing the Lindsborg Historical Society into the SVHA in 1964. She was the founding director of the Lindsborg Swedish Folk Dance, a group for high school students.

Ewald Lofdahl level \$100—\$499

Ewald was an enthusiastic board member of the SVHA and spoke Swedish flawlessly.

Rev. Eugene Nelson level \$500—\$999

Rev. Nelson loved history and wrote and spoke on the subject whenever possible. He was president when the Association resumed ownership of Coronado Heights in 1987.

Malcolm Esping level \$1,000—\$4,999

Malcolm, it could be said, WAS Lindsborg history. He was very instrumental in establishing the Old Mill Museum and a consummate story teller.

Dr. Duane Fredrickson level \$5,000—\$9,999

Now in his retirement, Dr. Fredrickson is our "go-to" guy for Coronado Heights. He's on the hill weekly cleaning and hauling off trash.

Birger Sandzen level \$10,000—\$24,999

Sandzen was a well known Midwest artist who helped organize the Historical Society in 1919. The Memorial Gallery in Lindsborg honors his contributions to his adopted country, the USA.

Dr. Emory Lindquist level \$25,000—\$49,999

A Lindsborg native, Dr. Lindquist was a Rhodes Scholar who became president of both Bethany and Wichita State University. He wrote volumes on historical subjects; many of his books are about Lindsborg and Bethany College.

G. N. Malm level \$50,000—plus

G. N. Malm was a tireless businessman, promoter of Lindsborg and Bethany College, and had the vision for the development of Coronado Heights.

(all gifts are 100% tax deductible)

Coronado Heights Timber Pens



Limited Availability!

\$30.00 +tax

Available at:

Old Mill Museum 120 E. Mill St.—Lindsborg, KS. And SVHA meetings



SVHA 2018 - 2019 Program Schedule

Once again our Program Chair, Elly Ostlind, has put together a spectacular and informative schedule this academic cycle, here are the programs.

Nov. 13, 2018: Lindsborg, KS - Celebrating 150 Years.
Susan Achenbach and Betty Nelson, *and others.*

Jan. 8, 2019: Kanopolis Dam's Affect on the Smoky Valley
Brock DeLong, Park Ranger

March 12, 2019: Tuttle Creek Dam: How did it affect Lindsborg area people?
Kevin Larson, Teacher, Pastor

May 14, 2019: Broadway RFD – Oldest Outdoor Theatre in Kansas
Eric Lundstrom

President, Tim Stewart - 785/819-4806

Program Chair, Elly Ostlind - 785/212-0516.

Programs will be held 7:30 pm at:

Bethany Home Activity Room, 321 N. Chestnut, Lindsborg.

Refreshments will be served after the presentations. Hope you can join us!

Please cut along the dotted line

Smoky Valley Historical Association
P.O. Box 255
Lindsborg, KS. 67456

☐ \$25 ☐ \$50 ☐ \$100 ☐ Other \$ _____

Name: _____ Date: _____

Address: _____

City: _____

State: _____ Zip Code: _____

Phone: _____ Email: _____

Memberships are renewed in the first quarter of each year

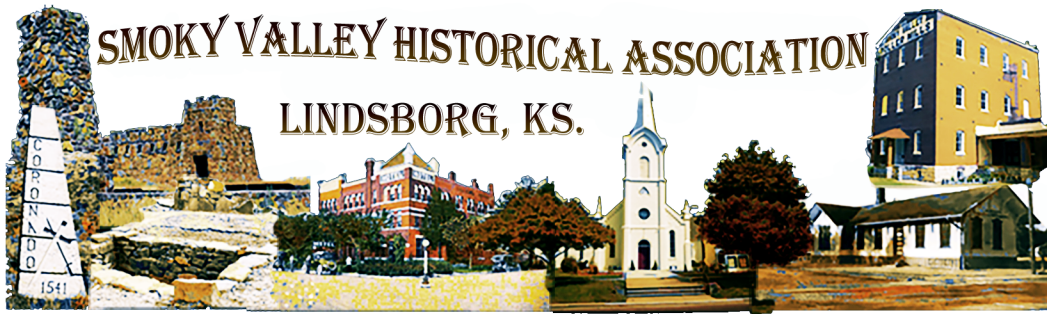


Smoky Valley Historical Association is a non-profit organization and is registered under 501(c)3

All Membership Donations, Bequests, Trusts, and Legacy Donations are tax deductible.

Please mail to P.O. Box listed above.

Thank You!



SMOKY VALLEY HISTORICAL ASSOCIATION

BOARD OF DIRECTORS

Tim Stewart - *President, Newsletter*
 Robert Ahlstedt - *Vice-President*
 Julie-Ann Neywick - *Secretary*
 Lenora Lynam - *Treasurer*
 Elly Ostlind - *Program Chair*
 Chester G. Peterson
 Matt Stula
 Dr. Duane Fredrickson - *Emeritus*

Interested?

We have two BOD positions open. Email to info@lindsborghistory.org

Smoky Valley Historical Mission

The purpose of this association shall be to collect, arrange and preserve historical data, books, pamphlets and manuscripts pertaining to the early history and settlement of our community in general and the City of Lindsborg in particular; to preserve and beautify places of historical interest in our city, its vicinity, and properties entrusted to the association; and to promote the study of history of our settlement and its cultural growth by lectures and other available means.

Contact Us

You can e-mail us at:

info@lindsborghistory.org

or mail to:

Smoky Valley Historical
Association, Inc.

PO Box 255

Lindsborg, KS 67456

Check our Facebook page for the most up-to-date information concerning the Smoky Valley Historical Association.



Thank you for your contributions, and supporting the historical preservation of Lindsborg and the Smoky Valley of Central Kansas.

Our pioneers left their legacy long after they were gone, so can you. Managing estates, bequests, and gifts through retirement plans can help keep our preservation ongoing and long-lasting.

Meetings

We have bi-monthly meetings from September thru May and held on the 2nd Tuesday of the month at Bethany Home. All meetings are in the Activities Room. There are five meetings per academic year (Sept.-May). Program starts at 7:30 p.m. with topics of local historical interest. Come join us!



Funding

Membership contributions are the SVHA's major source of on-going funding. A free-will donation in any amount will secure your membership in the Association for the year. Memberships are renewed in the first quarter of each year.

Grants, such as those awarded by the Kansas Humanities Council, are also available from time-to-time to further the mission of the SVHA.

Is a member of the
SMOKY VALLEY HISTORICAL ASSOCIATION, Inc.
which has headquarters in Lindsborg, Kansas

Was born in a log cabin	()
Was born in Sweden	()
Great-grandparents came from Sweden	()
Forefathers were here before the Swedes	()
Great-grandparents homesteaded in the Valley	()
Attended one-room school	()
Attended Bethany	()
Has worked at The Old Mill in operation	()
Has sung in the Messiah Chorus	()

TACK SÅ MYCKET!



SMOKY VALLEY HISTORICAL ASSOCIATION
LINDSBORG, KANSAS 67456