



COMMUNITY HOSPITAL
FORUM

Monthly Performance Snapshot

October 2024

Powered By:



Who We Are



COMMUNITY HOSPITAL
FORUM

The Community Hospital Forum (CHF) is an organization focused on sustaining independent community hospitals and small health systems through research and creating communities of leaders that share and learn from one another



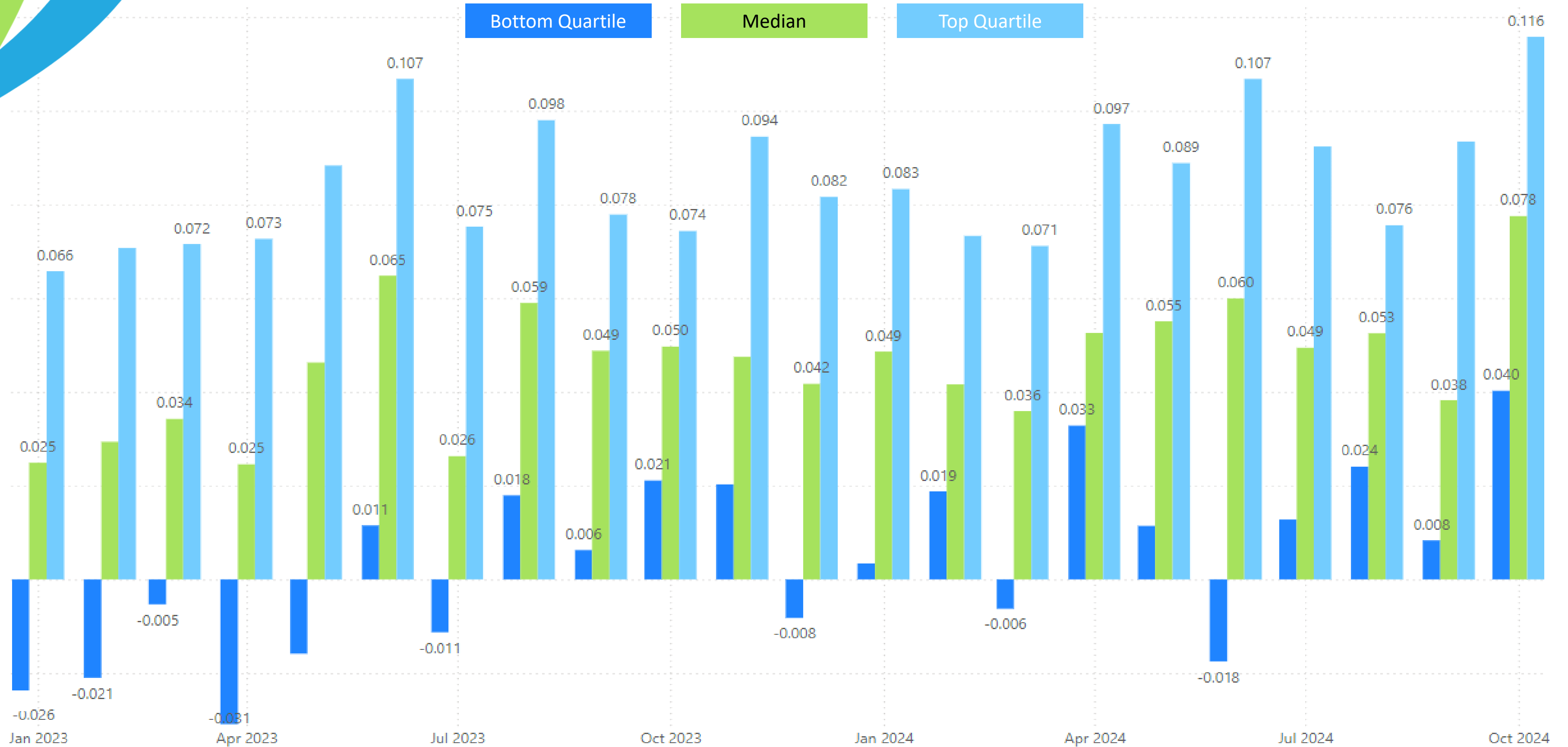
Visit Our Website

communityhospitalforum.org

Powered By:



Monthly EBIDA Performance

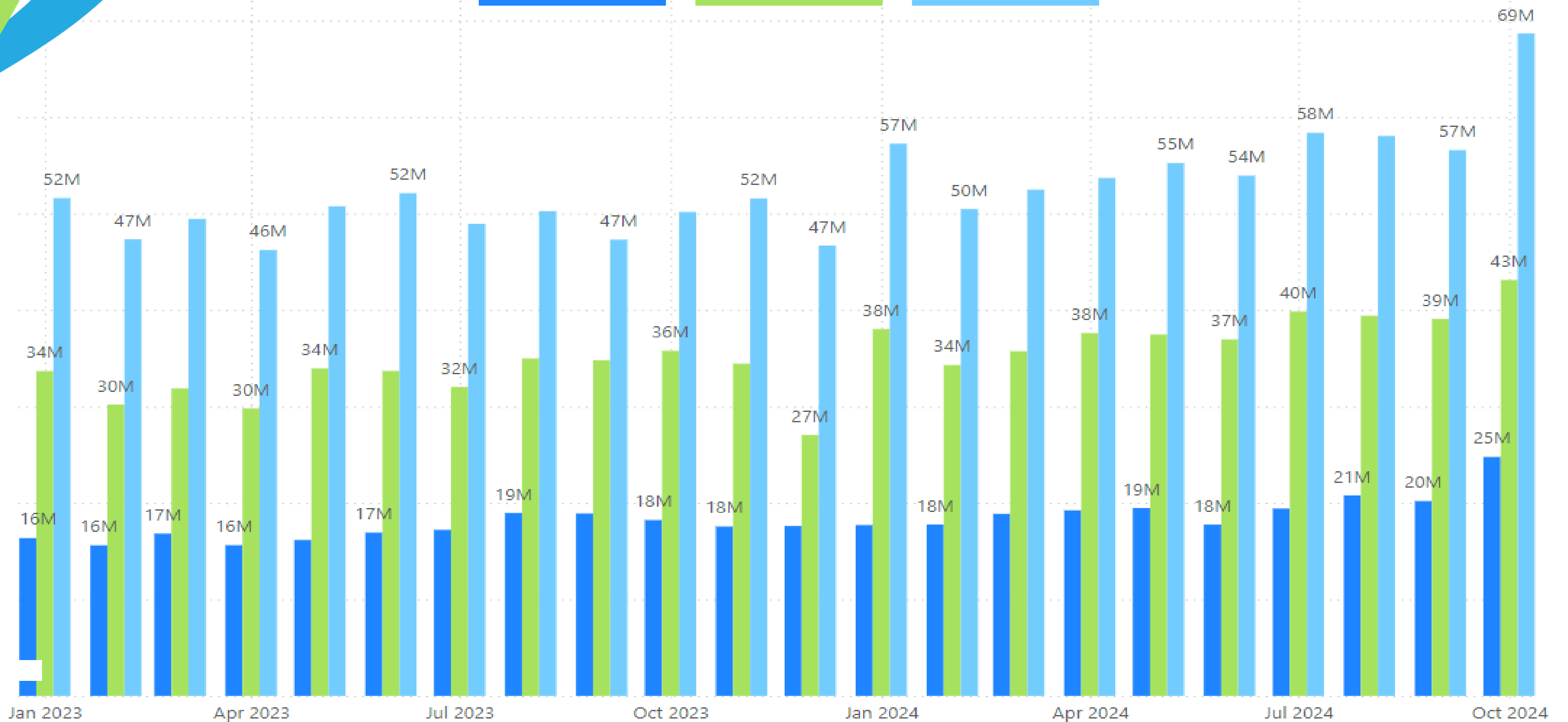


Net Patient Service Revenue

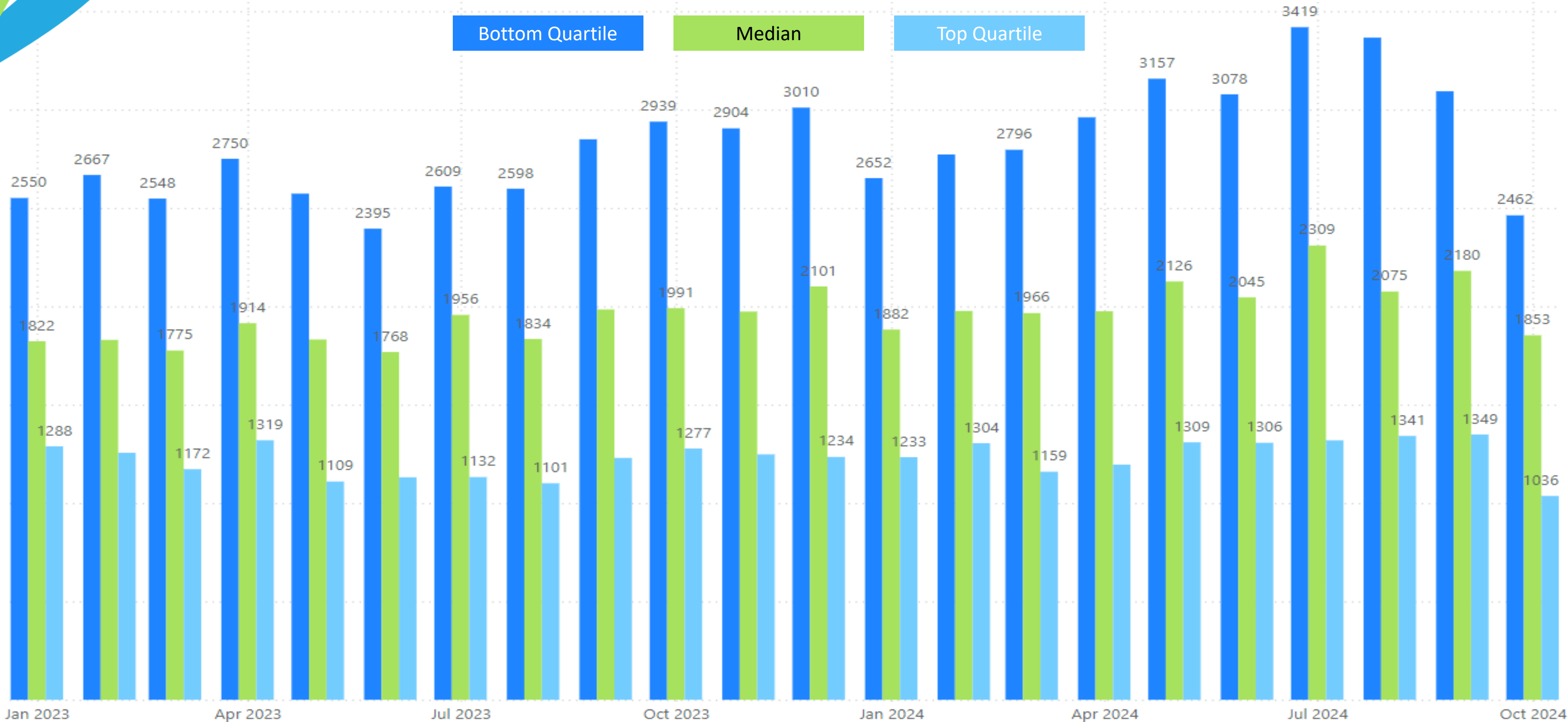
Bottom Quartile

Median

Top Quartile



Total Expense Per AWI and CMI Adjusted Patient Day

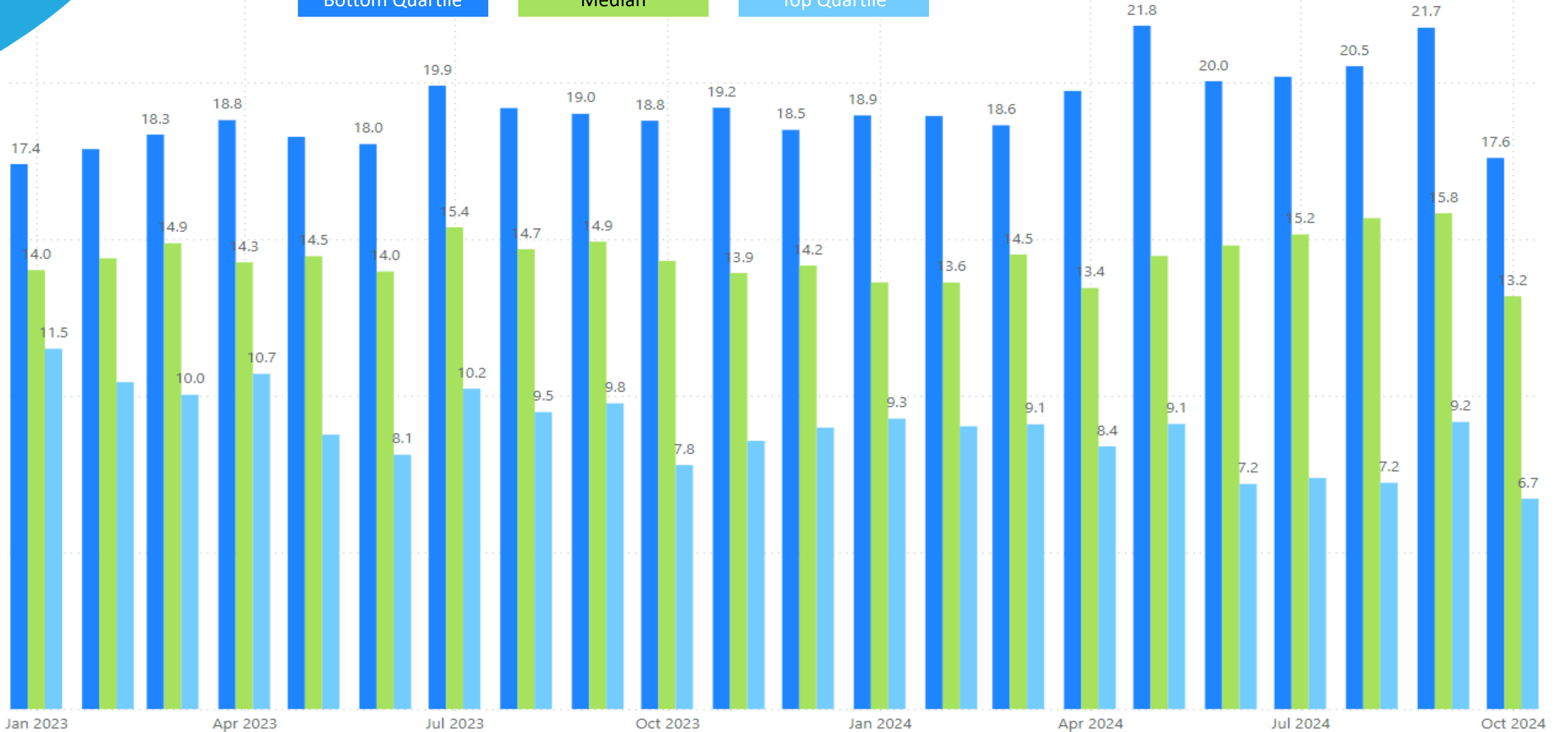


Worked Hours Per CMI Adjusted APD

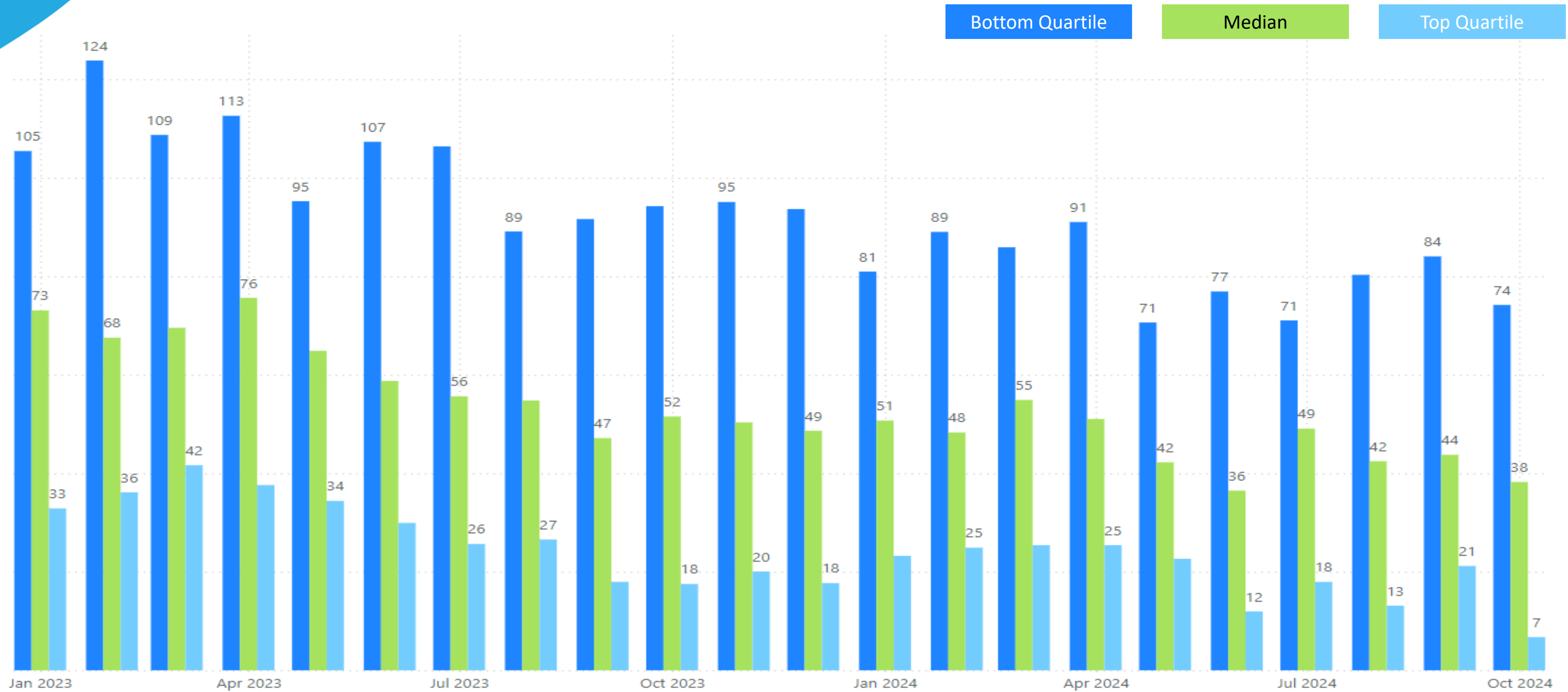
Bottom Quartile

Median

Top Quartile



Contract Labor Expense Per Adjusted Patient Day (APD)

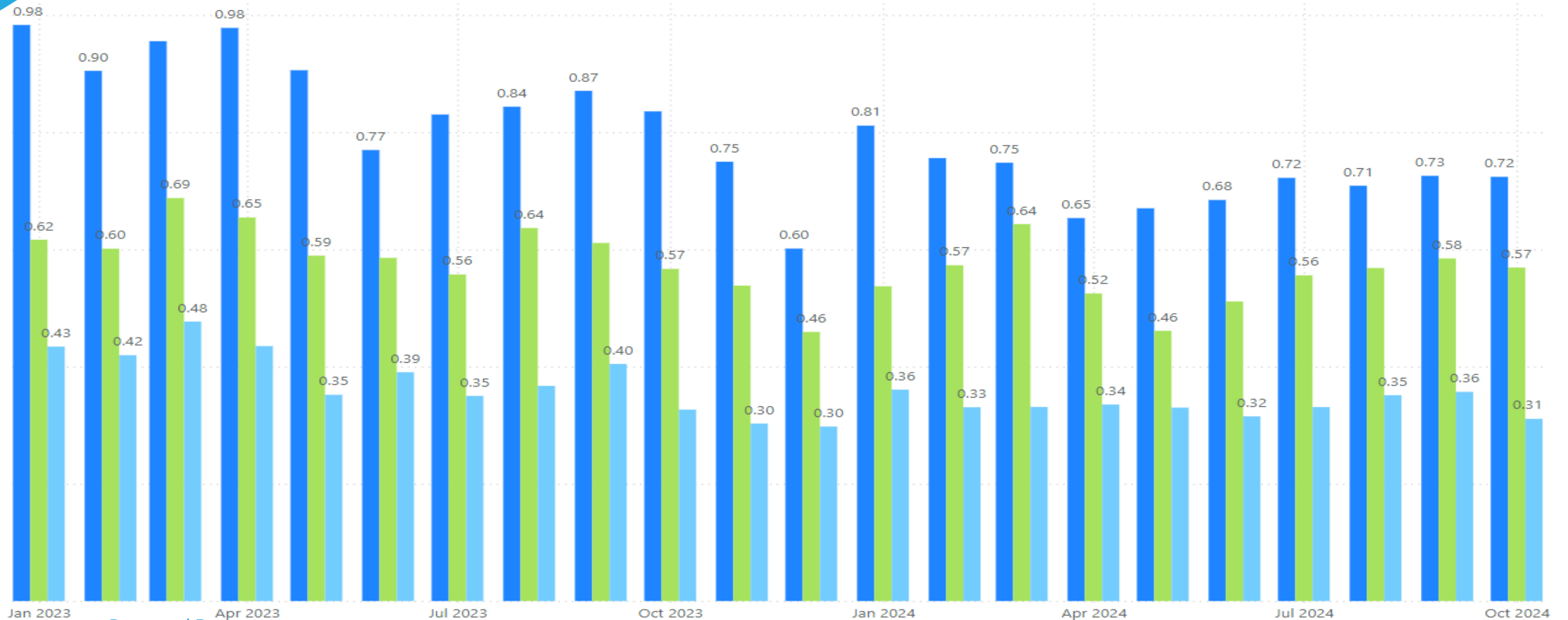


Contract Labor Hours Per APD

Bottom Quartile

Median

Top Quartile



Powered By:



COMMUNITY HOSPITAL FORUM

ECG MANAGEMENT CONSULTANTS

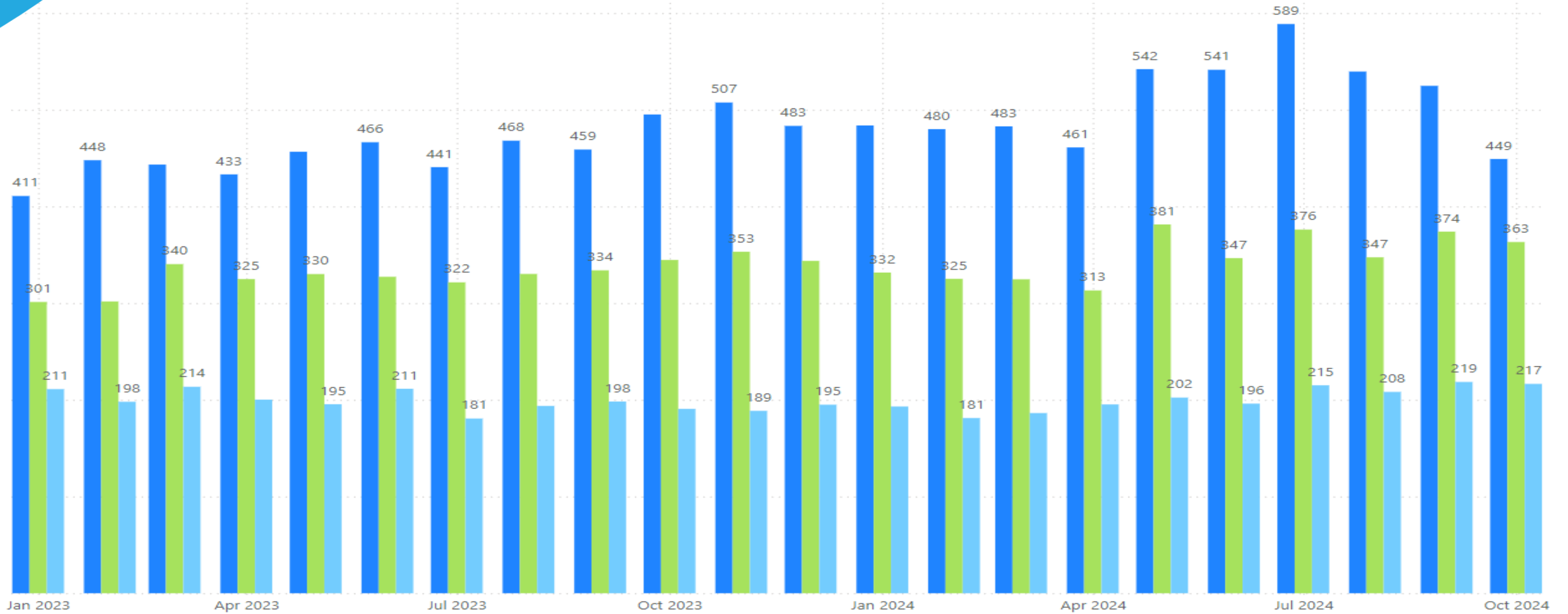
A Siemens Healthineers Company

Supply Expense Per CMI Adjusted Day

Bottom Quartile

Median

Top Quartile



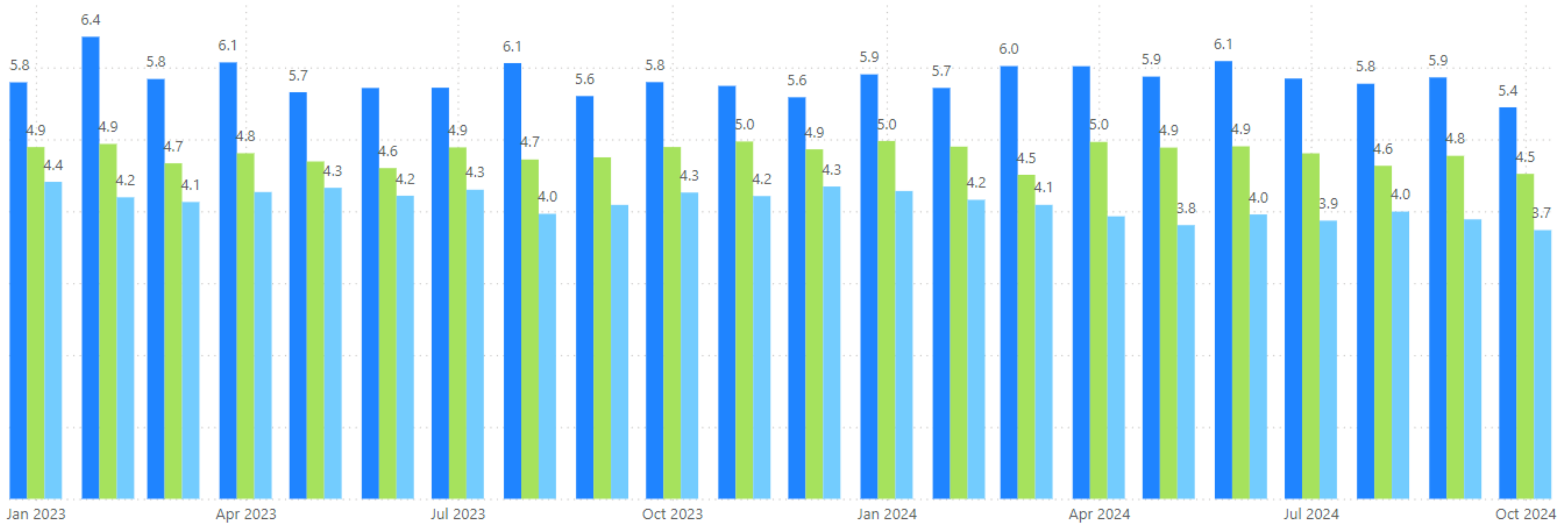
Powered By:



A Siemens Healthineers Company

Average Length of Stay (ALOS)

Bottom Quartile Median Top Quartile



COMMUNITY HOSPITAL FORUM

Powered By:



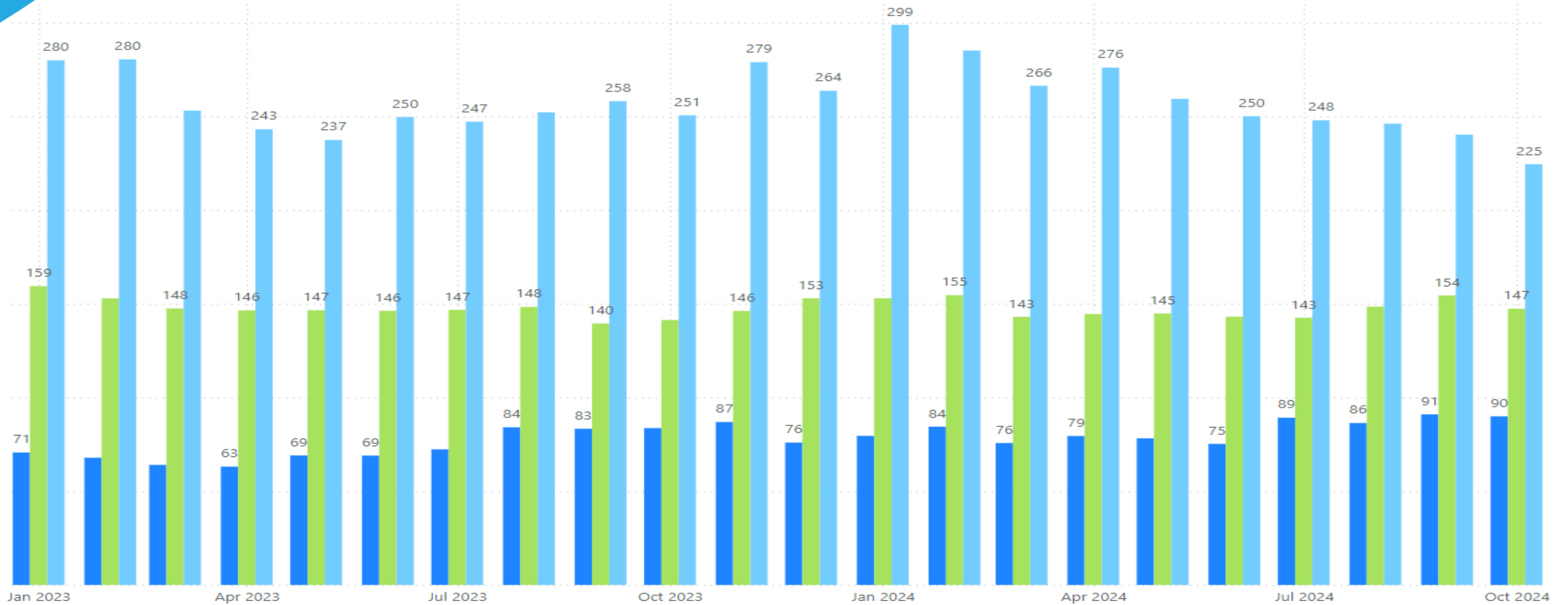
A Siemens Healthineers Company

System Occupied Beds

Bottom Quartile

Median

Top Quartile



COMMUNITY HOSPITAL FORUM

Powered By:



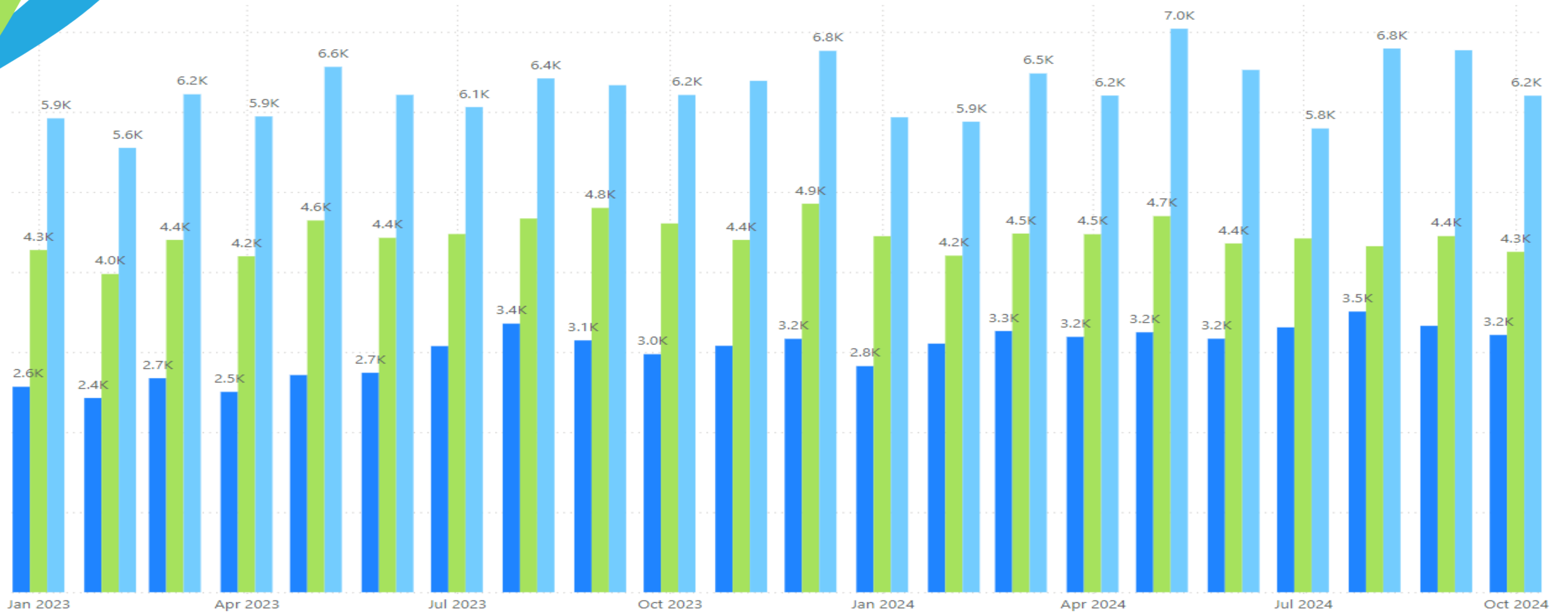
A Siemens Healthineers Company

Monthly ED Visits

Bottom Quartile

Median

Top Quartile



COMMUNITY HOSPITAL
FORUM

Powered By:



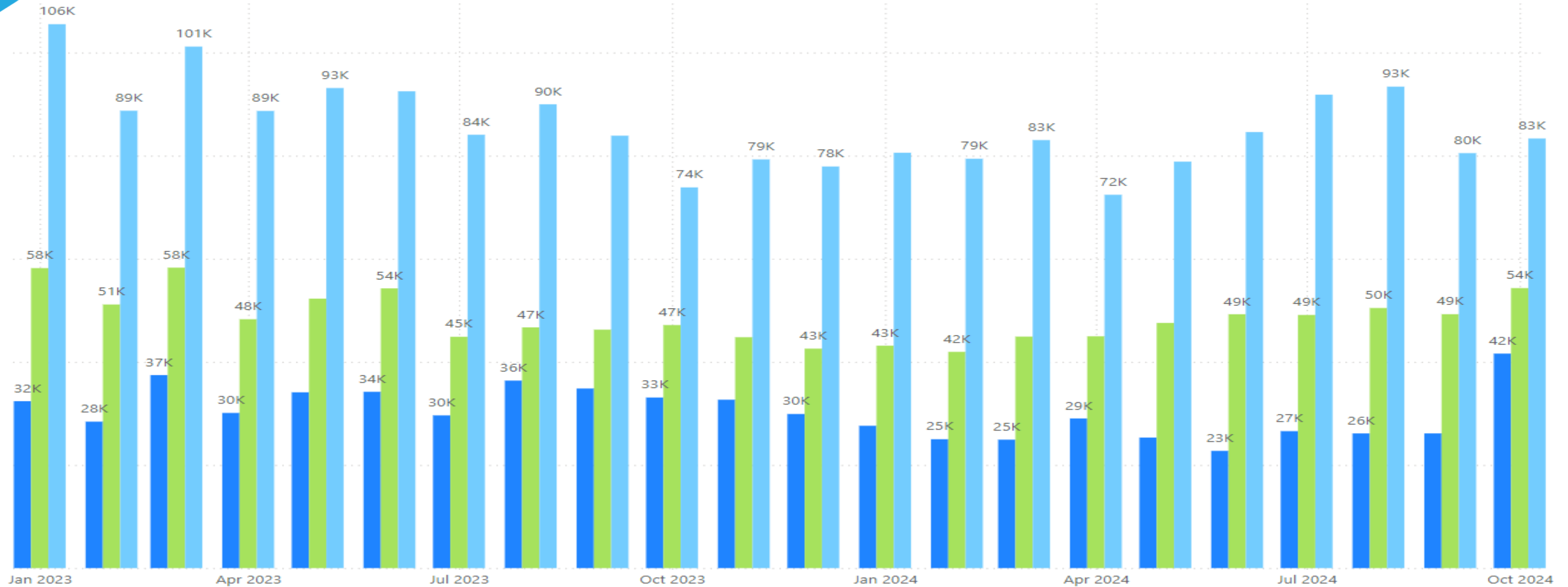
A Siemens Healthineers Company

Monthly Operating Room Minutes

Bottom Quartile

Median

Top Quartile



COMMUNITY HOSPITAL
FORUM

Powered By:



A Siemens Healthineers Company

About The Data

The data compiled for Community Hospital Forum (CHF) is based on data from the Syntellis Market Insights: Healthcare Data Set

- The data set has been curated at the request of ECG's Health System Optimization (HSO) team to support CHF members.
- This data includes more than 70 independent community excluding critical access hospitals.
- The source of this data is from the cost accounting system of these organizations and is updated on a monthly basis on a one month delay.
- Additional data available by request.



Advising CHF Members

If you would like to join a roundtable, learn more about the Community Hospital Forum (CHF) or would like to speak to an ECG advisor on any of the areas below:

- Strategic and financial planning
- Financial and performance improvement
- Transaction advisory
- Operational excellence
- Physician alignment

Please Contact

John Budd, MBA, FACHE

Partner, ECG Management
Consultants



Contact John

JBudd@ECGMC.com