

Maple Park Community Garage Sale

ABOUT 30 SALES!

May 16, 17 & 18, 2025
Starting 8am Daily



MAPS AVAILABLE AT

Print your map by going to
www.DiscoverMaplePark.com

OR

Pick up on day of sale at
Castle View Real Estate
303 Main Street

Sales are open all three days unless otherwise noted.

You may print a map by visiting - www.DiscoverMaplePark.com

or

pick up a map on sales days at Castle View Real Estate, 303 Main St., Maple Park.

705 Maple Ave.

220 W Ashton Dr. (Friday and Saturday)

Display cabinets, glass coffee table, china, dining room table, lamp, Disney snow globes, Terry Redlin framed pictures, scenic paintings, stroller, car seat, kids' dresser, and YL oils.

316 W Chester Dr. (Friday and Saturday)

417 S. Inverness St. (Friday and Saturday)

Boys clothing, kid's toys, women's clothing, home décor, household misc. items.

404 Elm St.

All sorts of items.

804 Elm St. (Friday and Saturday)

Garden and regular tools, glassware, misc. items. Moving Sale

325 Main St.

All clothing (women's and unisex)

539 S Elizabeth St. (Friday and Saturday)

Patio table, Disney items, plant pots, tools, stone veneers.

112 E. Ashton Dr.

Home décor, nursery glider, entertainment cabinet.

811 Willow St.

2 sellers! Over 35 totes, indoor/outdoor furniture, collectables, jewelry, cast toys, fishing, kitchen, tools, bird houses, estate items and so much more.

447 E. DeKalb Dr.

714 Willow St.

Silver Age, Modern, and Graded Comic Books. Misc. other items.

618 Walnut Ave.

Kids toys, boxing bag, tools, cloths, motorcycle parts, sports memorabilia, kitchen items.

526 S Kincaid St. (Friday and Saturday)

Hanger rack Shoes rack

623 Walnut St.

636 Willow St. (Friday and Saturday)

Multi-family Men, Women, and Toddler clothes, NASCAR diecast cars, Pioneer subs and amps.

545 S Huntley St.

409 Center St. (Saturday)

602 Main St.

Household items, children's toys, furniture.

532 W Fulton Dr.

407 S Broadway St. (Friday afternoon and Saturday)

Many books, misc....

611 Walnut Ave. (Friday and Saturday)

Baby gear and clothes, men's and women's clothing and shoes, changing table, baby swing, household items.

426 W Ashton Dr. (Friday and Saturday)

Boy's clothes (18/20), men's clothes (small medium), girl's clothes (2T-3T), lots of vintage fabric, paperback books, houseware items, assorted stationery (new), packaged gift boxes (new), and more!

643 Walnut Ave.

Kids and baby items, girls clothing newborn-size 14, other misc. clothing (women's, men's, boy's) misc..household items.

444 E Dekalb Dr. (Friday and Saturday)

117 N County Line Rd.

Between St. Mary's Church and the railroad tracks. Long drive runs parallel to the tracks, behind the green building.

All gender baby/kids/adult clothes, shoes, winter apparel, household, kitchen, sports items, crafts, baby gear, double stroller, boating items, kids dress ups, dinos, barbies, building/construction materials, toys, baby items, pet items, misc...

209 Pleasant St. (Friday and Saturday)

Lawn mower, estate sale items.

699 S. Geneva St.

General items, tools, household, comic books, homeschooling curriculum.

671 S Geneva St.

Furniture, appliances, home décor, adult and children's clothes.

550 S. Huntley St. (Friday and Saturday)

Multi family sale! Vintage, home décor, camping gear, canoe, children's, women's, men's clothing and shoes and more.

688 S Elizabeth St. (Saturday and Sunday)

RURAL AREA SALES

Short drive from town for some great sales!

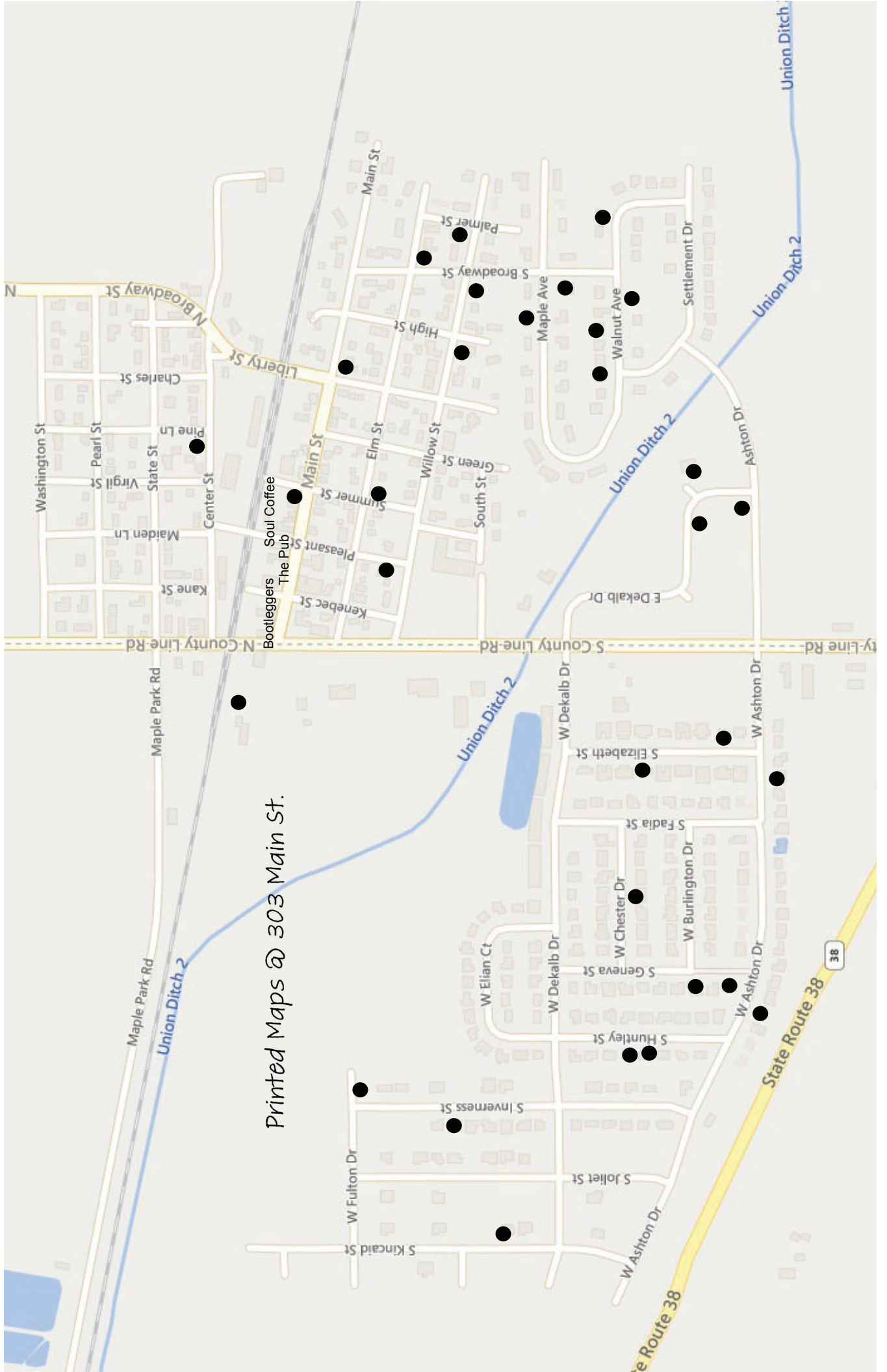
7N239 McGough Rd. (Friday and Saturday)

From Maple Park, North on County Line road to Rt. 64. East on Rt. 64 to McGough Rd. North on McGough Rd.

2N914 Howard Rd. (Friday, Saturday and Sunday until 2pm)

From Maple Park, Take N. Broadway from the north/east side of town, N. Broadway becomes Thatcher Rd. continue East on Thatcher Rd to Howard Rd. Then South on Howard Rd.

Small curio cabinet, fabric, women's clothes (sizes med-large), boy's clothes (sizes 7-10), Boys shoes (sizes 3-up), variety of sports cleats, collectable bells, decorative plates, punch bowl, desk, end table, mixing bowls, various household items, toys, decorative boxes.



Printed Maps @ 303 Main St.