

IMMORTALIS



1996 NIIGATA

LOA:	147' 8" (45m)	Build/Model Year:	1996 / 1996
Beam:	24' 4" (7.4m)	Builder:	NIIGATA
Max Draft:	10' 6" (3.2m)	Type:	Motor Yacht Expedition/Explorer
Speed:	Cruising 10 Knots Max 12 Knots	Price:	\$3,950,000 USD
VAT Paid:		Location:	Denpasar, Bali Indonesia

NOT AVAILABLE FOR SALE TO U.S RESIDENTS WHILE IN U.S. WATERS.

Additional Specifications For IMMORTALIS:

LOA:	147' 8" (45m)	Delivery/Model	1996
Beam:	24' 4" (7.4m)	Year:	
Max Draft:	10' 6" (3.2m)	Year Built:	1996
Hull Material:	Steel	Refit Year:	2021
Superstructure:	Aluminum	Builder:	NIIGATA
Tonnage:	319	Type:	Motor Yacht Expedition/Explorer
Speed:	Cruising 10 Knots Max 12 Knots	Engines:	Single, Niigata, 6MG25HX, 11992hrs
Int Designer:	Ashley Sutton Design	Staterooms:	6
Ext Designer:	Periscope Naval Architects	Heads:	6
Fuel Capacity:	26681 Gal	Classifications:	
Water Capacity:	2641 Gal	MCA: ISM:	
Flag:	Cook Islands		
Location:	Denpasar, Bali Indonesia		
Price:	\$3,950,000 USD		

Overview

CAPACITIES

Fuel tank: 9 tanks, capacity 101.92 m3

Fresh Water Tank: 2 tanks, capacity 18.42 m3

Waste Oil: 1.96 m3

Black Water: 250l, 2600l

MACHINERY

Main Engine: Niigata 6MG25HX 1500PS x 750rpm

Engine hours: 11,992 hours (May 2022)

Gearbox: Propulsion - 11,992 hours (May 2022)

Propeller: KAMOME 4 blades CPP-53AVCN-1

Bow thruster system: Bow thruster - KAMOME TCA30UN; Pump motor - Shinko CR-G

FUEL FILTERING SYSTEM

Micfil Ultra Fine Filtration system, containing:

Micfil bag filter BG400, water separator WS1000, quad

AL600 0.5 Micron, stainless steel quad manifold

Volumetric pump 4000 l/h

Water sensor monitoring

WATERMAKERS

1. AquaPet SF-30N

LP SW pump Sanshin FOHM32A

LP SW pump motor Tayio TIF-71

2. ECH2 TRC 1800 Pro 4

LP SW pump WEG MARCH -0151-0039-1300

OTHER SYSTEMS

Water filtration system: UVBB - 3/SD/EPM Sterilization UV 57lt/min

FW electric heater: Harrison Co Ltd model 16 220 F6

Fresh water System: Kawamoto pump NF2K x2

Toilet system: Tecma silence plus 2G x9

Hydraulic System:

Upper deck crane hydraulic control pump - Sumitomo turniger 422F

Upper deck crane hydraulic control pump - Shinko IRG

Aft deck crane hydraulic pump motor - Dezhou Hen Li Electric

Cathodic protection: Zinc anodes

BILGE SYSTEM

Bilge OWS - Taiko USH03

Bilge OWS motor - Nidec Power FEQ

Bilge OWS pump - AIQ4257

Bilge pump - Japan MCQS-50

Bilge pump motor - Shinko CRQI-G

FIRE EXTINGUISHING SYSTEM

Hoses, fire extinguishers:

11 x Powder 9kg

3 x Foam 9kg

3x CO2 5kg

Fire Pro - fixed fire suppression system in engine room

Emergency fire pump on the aft deck

GENERATORS

2 x Niigata 6NSF-G 250ps 1200rpm

Port hours 13,880 (May 2022)

Starboard hours 13,614 (May 2022)

Nippon Sharyo HO7DC

2 x Shinko TVLI GJ 603

AUDIO & VISUAL EQUIPMENT

Surveillance cameras:

2x Hikvision Exir Fixed Dome Model DS-2CD2155FWD-I

5x Hikvision network camera model DS-2CD2063G0-1

TV's:

4 x Samsung TV 32" (Guest rooms, crew area)

3 x Samsung TV 43" (Guest rooms)

1 x Samsung TV 82"(Great room)

SOUND SYSTEM:

SONOS 5.1.2 home theatre package with ARC (Great room)

SONOS one gen 2 speaker wireless (Sundeck)

NAVIGATION & COMMUNICATION

Radar 1: Furuno Denki FAR-2107, RCU-014

Radar 2: Furuno DRS4D-NXT

Plotter 1: Furuno Denki GD-700

Plotter 2: Furuno Navnet TZ3, TZT19F

Multi Distributor for Data: Furuno MD-550 (new, installed in May/June 2022)

AIS:

Furuno F-170 AIS unit

Jotron AIS SART

EPIRB: Tron 60S 406mhz

GPS: Furuno GP-39 (new, installed in May/June 2022)

Sonar: Furuno FCV-1500L

Autopilot: Tokyo keiki PR-2604-SS/ Furuno Navpilot 711C

Gyro Compass: Tokyo keiki TG-6000

Magnetic Compass: Tokimec SH over 1 65A

Navtex: NCR-300A

MF/HF SSB Radio telephone: Samsung SRG-3150DN

Printer/Photocopy: Epson PX-M5041F

VHF/UHF:

Furuno marine VHF radio FM-4800 +antenna CX4 (new, installed in May/June 2022)

2x JHS-32A

5x ICOM IC-M25

4x ICOM VHF

3x Motorola UHF

GSM – 4G: Peplink MAX HD 1

WiFi routers: 4x Ruckus 7372 (new) + 4 routers

Satellite phone with handset: Thuraya SatSleeve

LRIT/Inmarsat C: Cobham Sailor 3027 Mini-C Terminal, Sailor SSS add-on kit for 6110

incl. terminal Sailor 6194, alert and test buttons

Inboard Telephone System: OKI – Marine phone system

ELECTRICITY

Main Power Supply:

3 AE producing 220V / 60hz

110VAC / 60hz

24V DC

Shore Connection: 3 phase 125-250amp

Shore Power Converter: Delta star 110KVA 3 PHASES 440V/400V/380V -> 220V 50/60HZ 3P

Engine Room battery chargers: 1 battery charger

House/Emergency battery chargers: 2 battery chargers

House/Emergency batteries: 2 battery banks

Radio batteries: 1 battery bank

Navigation lights: Standard navigation plus N.U.C. and R.A.M.

Deck Lights: 4x LED flood lights dimmable 220v / 200W

Underwater lights: 2x Bluefin LED MR20TH

GALLEY

Rational Self Cooking Center 5 Senses Model 61 Single Deck Combi

Oven - new

Commercial electric fryer (capacity 16l) - new

Commercial hot plate griddle HG-24 - new

Commercial hot plate stove Marinix HPO-4S-900 series - new

Glasswasher/dishwasher machine Reyco model GW-11l - new

Commercial ice maker Bayin / Pola model BY-100/200 - new

Commercial blender with sound cover - new

Philips rice cooker HD 3138 - new

Fire blanket - new

Freezer/refrigerator – Hoshizakidenki HRF-96PT

Tiger Professional rice cooker JNO- A270

Diamond drinking water filters – new

Juicer

Storage boxes (25 pc, different sizes)

Galley cold store:

Compressor - Daikin 2C5825E-F

Compressor motor - Shinko CR-G

2x Freezer midea HS185CNK (aft deck storage)

Great room:

Diamond drinking water filters - new

2x wine/drinks fridges

water dispenser

Espresso machine – CIME CO-01 semi automatic

Eureka - Coffee grinder Mignon Manual

Laundry:

2x Laundry dryer 10.5kg Speed Queen

2x washing machine front load 10.5kg Speed Queen

Cleaning:

Wet/dry vacuum, indoor vacuum

SAFETY AND LIFE SAVING EQUIPMENT

Life jackets: 25x SOLAS

Life rafts: 2x 25 person Youlong Rubber KHA-25 (surveyed April 2022)

First aid kit: 1x 25 person kit; 1x 5-10 person kit (tender)

Rescue tender: Primarily- Air Rider 7.5m tender; secondary- Zebec Armada 380

Other safety equipment:

3x EEBD

2x Fireman suits Nomex Deva Original with breathing apparatus

4x perry buoy 2.5 kg

2x perry line 30m

6x safety torches

4x line thrower

4x smoke flares

12x parachute flares

4x hand flares

2x MOB smoke lifebuoy marker

DECK EQUIPMENT

Anchor system:

Anchor hydraulic winch pump - kawasaki screw B38-4L5FLTTD

Anchor winch motor - Shinko DR-G

Anchors: 2 x UIS type

Anchor Chain: Port 6 sections (164m), starboard 5 sections (138m)

Mooring Equipment: Bollards

Deck Crane:

1. FURUKAWA UNIC UB-333 SWL 950kg

2. HAOYO C-F3-10S3 SWL 4.5t @4m 1.5t @10m

Swim Ladder: Stainless steel

Fenders: 14 x F11

Aftdeck:

Surfboard racks

Fridge for drinks

Cooler sportsman 120QT

Bean bags 3x floating, 3x sitting bags

Air pump (storage room)

Sundeck:

Fan cooling bar refrigerator 2 Door SS

4x sofa bean bags

2x sunlounges

DIVING EQUIPMENT

Compressor: Bauer PE250-TE 220Volt-60hz; 225 bar with P21 separator

Filter: Paramina P61 XL with wall bracket

Air distribution Network: 2 x Bauer filling whips, 2 x filling hoses 10m, 2 x filling adapter

Dive sets:

2 x Mares – abyss 22X regulator, rover octopus, mission 1, BCD

F-light, Rover mask and snorkel, X3 fin open heels, low cut booties

2mm, weight belt with s/s buckles, 2x2LBS lead weight, 1x2LBS soft weight

80 CUFT Tank: 6 x 80 CUFT Tank aluminium extra

OTHEREQUIPMENT:

Fishing: 11 rods and reels

Standup paddle board

Resistance bands and Olympic rings

MAINTENANCE & UPGRADE WORK

May 2020@Sensei CO. Ltd Shimonoseki Factory:

Service and measurement of propeller and rudder shaft

Ultrasonic thickness measurement of the hull

Antifouling

Refit 2020/21 @ BBS SHIPYARD BATAM/INDONESIA

Drydock in Citra Oct/Nov'20:

Installation of additional generator

Installation of additional water maker

New ballast keel plate 16T

Installation of additional transducer eco sounder

Hull blasting/washing/painting (3 layers incl antifouling)

Ship marking

Rudder blades – scraping, HP washing (3000 Psi), blasting and painting

Installation of swim platform

BBS (June 2020-December 2021)

Crew cabins: new frame up, cables, sockets, flooring, ceiling, walls, insulation, entry doors, ducting

Crew mess room: new frame up, cables, sockets, flooring, ceiling, walls, insulation, installation of table and sofa

Crew mess bathroom: new piping, drains, washing machines and dryers, framing, lightings, ceiling, walls

Guest cabins: new frame up, cables, sockets, flooring, ceiling, walls, insulation, lighting, entry doors, ducting, furniture, mattresses. New TV's and telephone system

Guest cabins bathrooms: new piping, toilet, shower, floor, drains, tiles, glass panel, taps, lights, ducting

Camera room and hallways: remove taps and fitting from the wall, box up wall leading to bathroom, fit toilet power, flooring, walls, lighting, fit table for camera room, staircase handrails, cables, sockets, telephone system, fire system

Entry toilets and shower: new toilets, tiles, walls lighting

Storerooms fwd galley: change of lighting, new flooring painting, installation of accumulator and transformer

Galley: install new oven and dishwasher, new walls, flooring, ceiling, overhead exhaust fan, double sink, fire doors

Bridge deck - vent for ensuite cabin, overhaul of the old crane

Aft deck: bulwark completion cut off and replace the hatches, box cover for batteries, new floor for fish room, staircase to upper deck, new bollards, stainless steel railings, timber flooring

Installation of new crane pedestal and the crane

Installation of new desal including LP pump

Great Room - fabrication, installation, incl. removal of existing structure behind wheelhouse, bathroom for GR, new AC's, lighting, floor, glass and internal fit out

Sundeck: installation, painting, new windows, railings, monkey deck, scuppers, louvers, lighting, ventilation, bar area, teak flooring

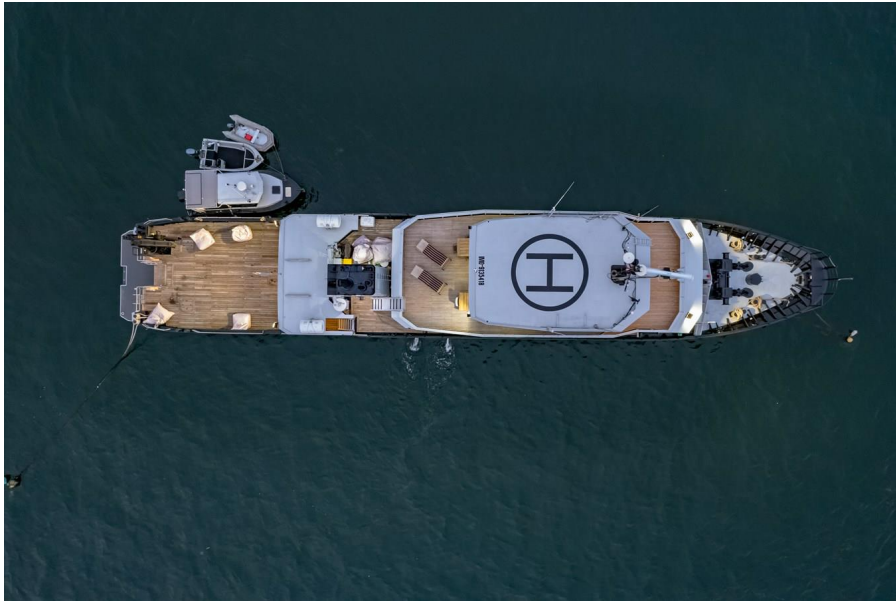
Mezz deck fabrication and installation incl glass, lighting stairs to bridge deck, tender tie down points

Mast: reinstalling equipment on new mast



IMMORTALIS









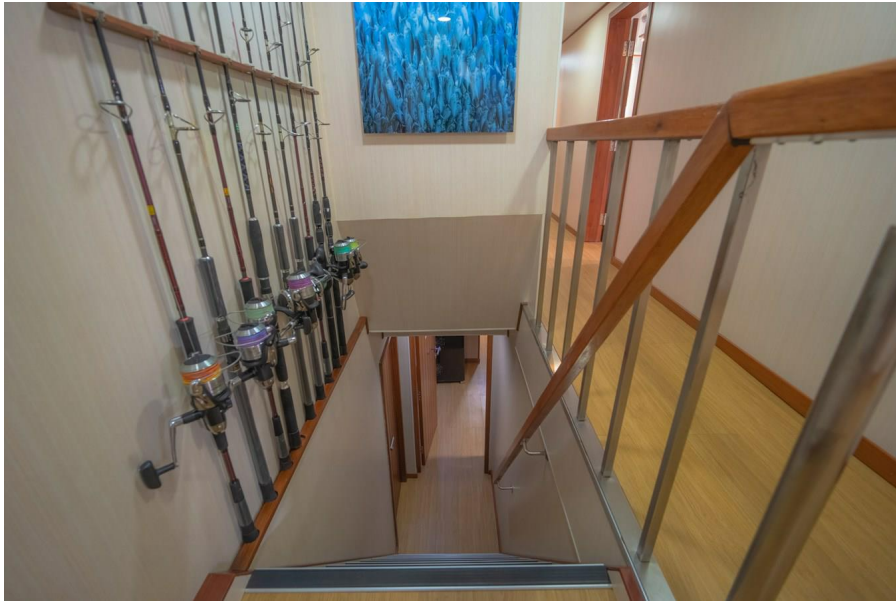






















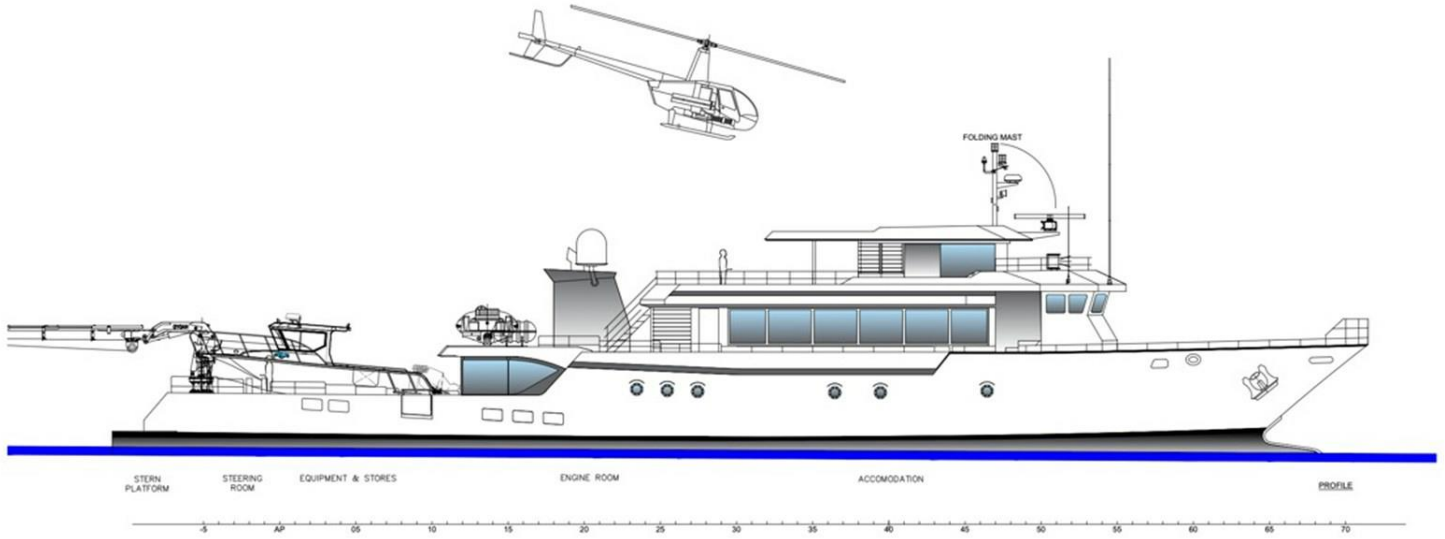




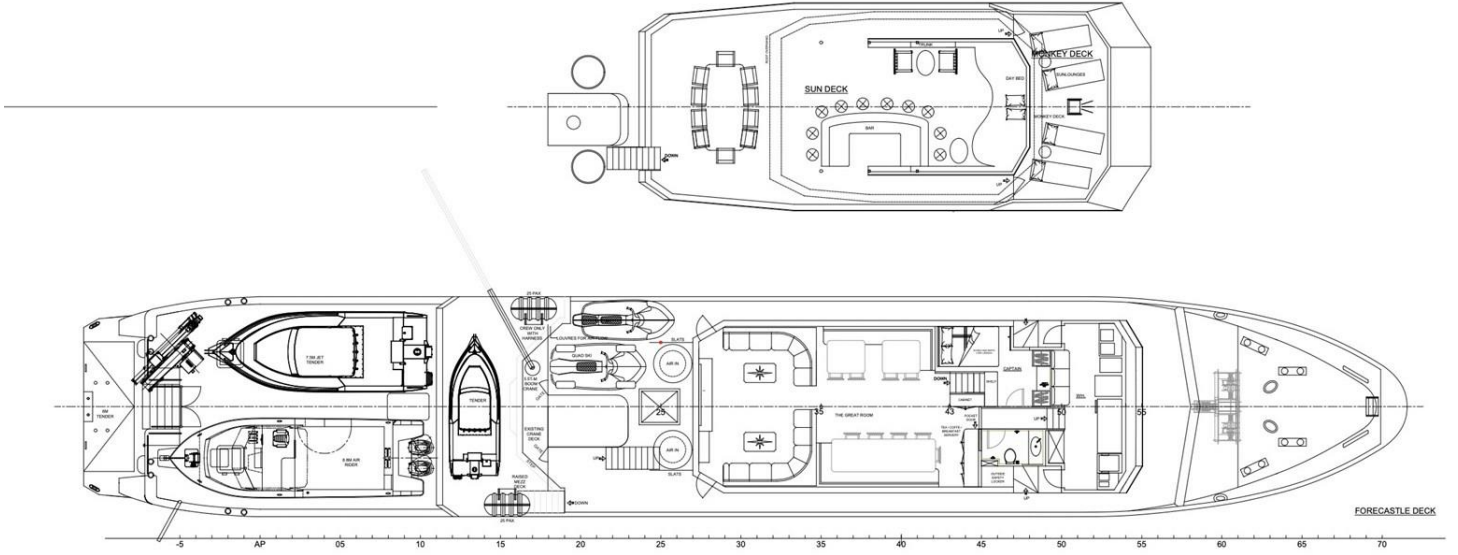




GA 1



GA 2



GA 3

