

Redding Property 1:

Price: \$500,000

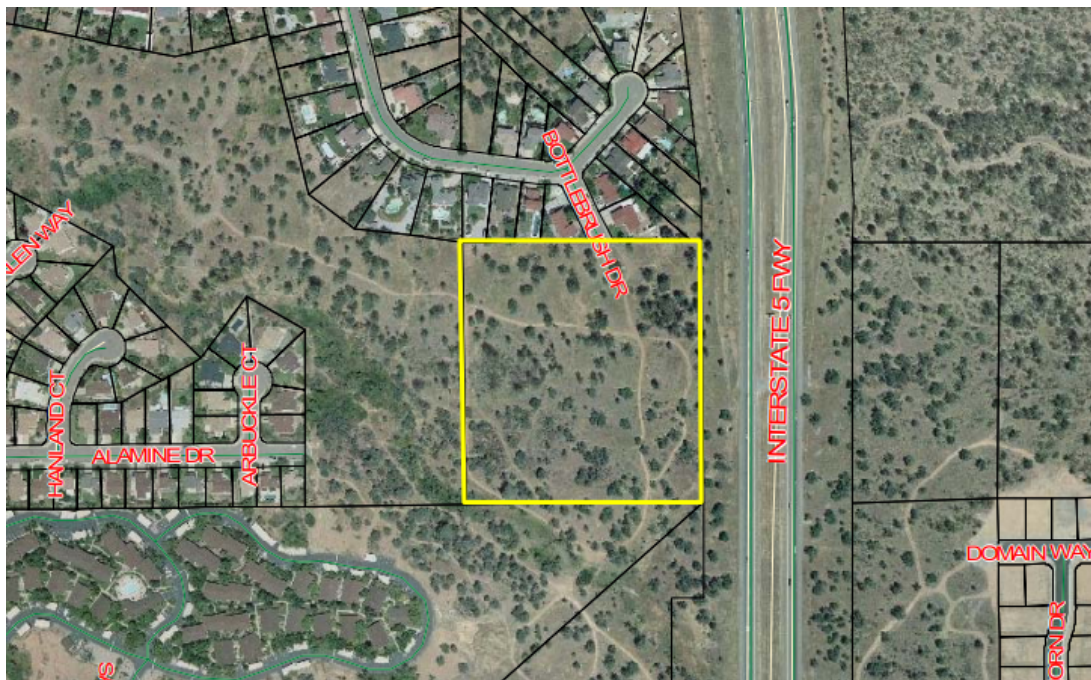
Zoning Code:RS-3

- 8.9 Acres of Residential Land
- Approved for 28 Single Family Lots
- Easy Highway Access
- Close Proximity to National Parks
- Turtle Bay Riverfront Park and the Sacramento River
- Average Household Income: \$65,392
- [Offering Memorandum](#)

The Bottlebrush Subdivision is in a prime Redding location. Surrounded by natural beauty, Bottlebrush is still only a few minutes drive to downtown Redding, creating the sought after combination of secluded mountain environment with in town convenience.

The City of Redding is currently in support of single-family development sites, looking to replenish the housing community after the Carr Fire. In addition to Bottlebrush's excellent location, it was fortunately unscathed by the fire, making it an excellent location to begin fulfilling this housing need.

Plot Map:



Redding Property 2:

Price: \$475,000
Zoning Code: RM-6

- Over 14 acres Zoned RM-6 and ready for multifamily development.
- Close to access to I-5 and Shasta Lake.
- Located within city of Redding limits.
- Corner of Beltline and Oasis.

Plot Map:

