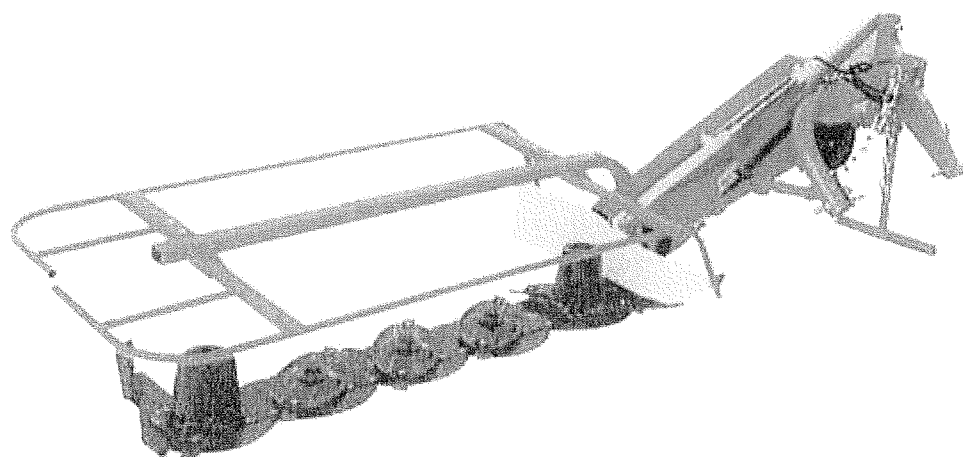


CURTIS DISC MOWER

FRD165 AND FRD210

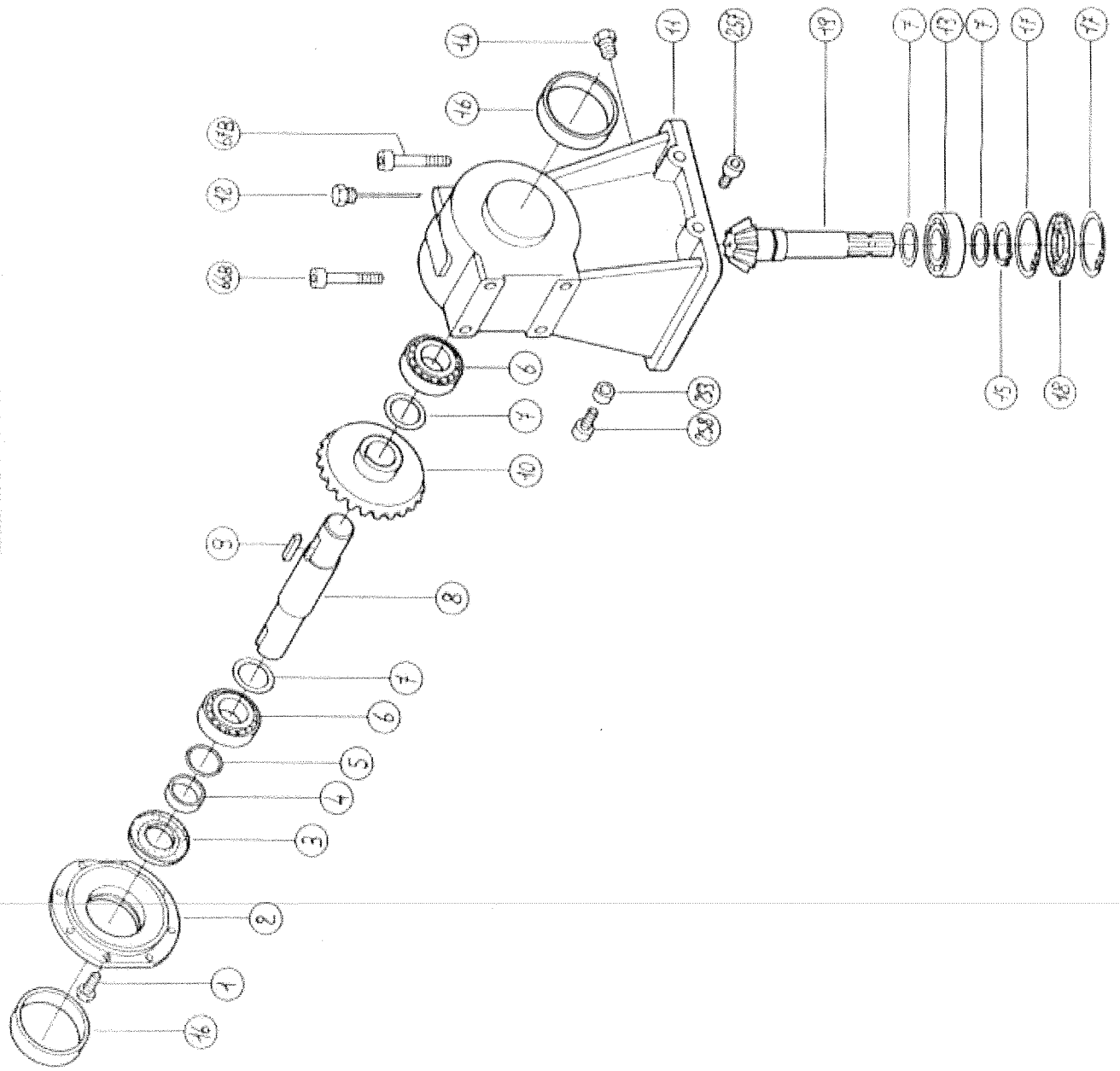
SPARE PARTS

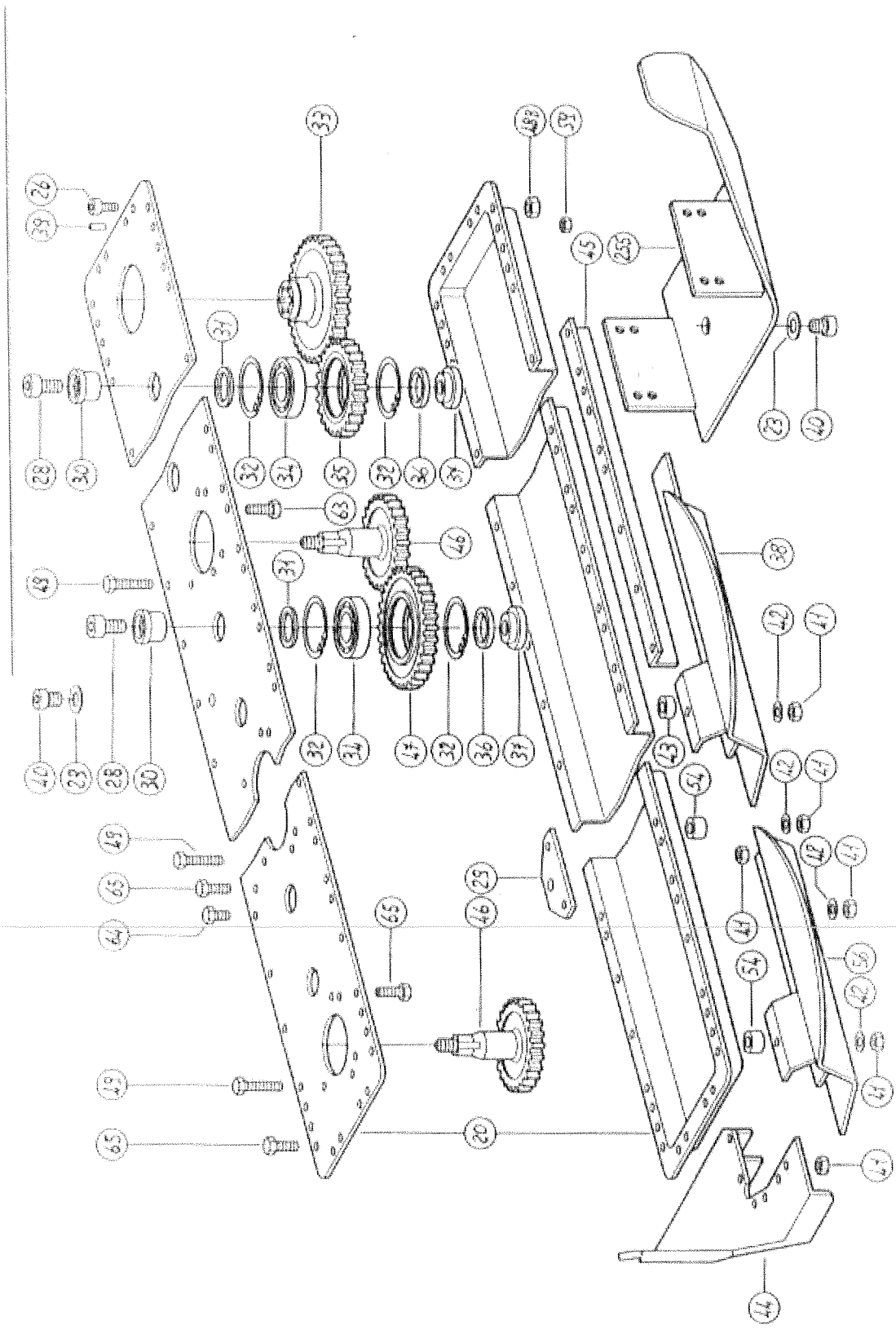


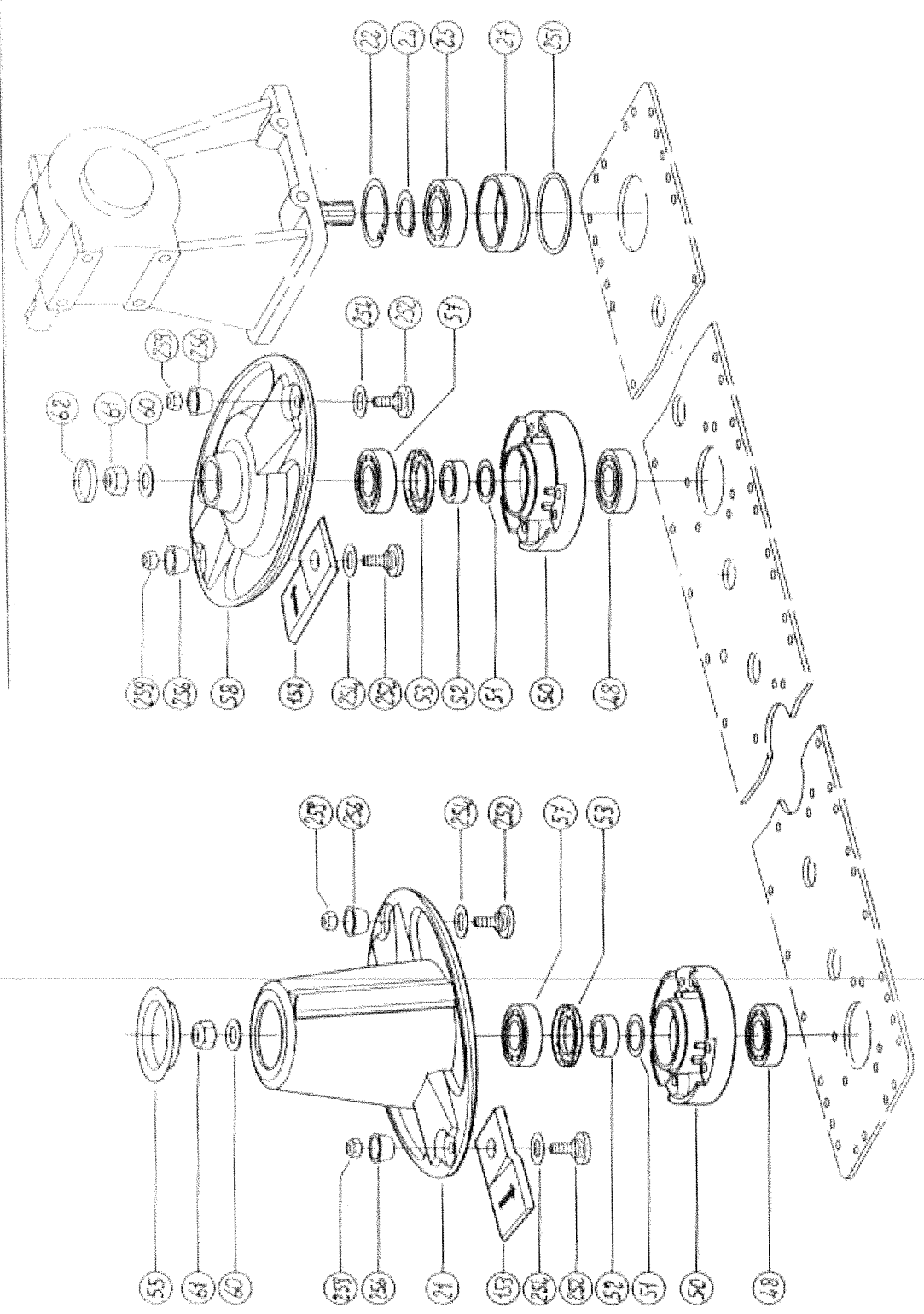
DISC MOWING MACHINES

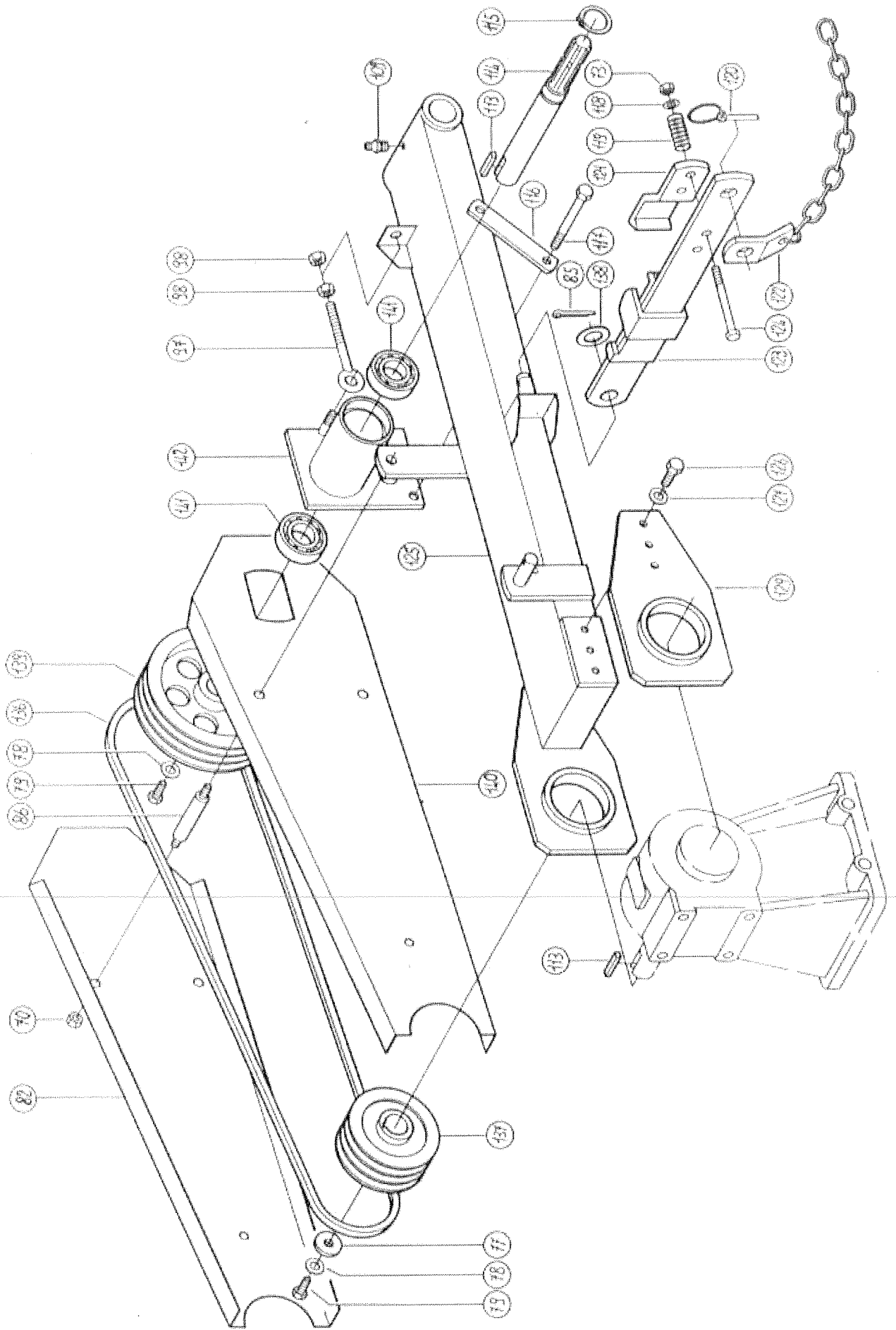
FR/D

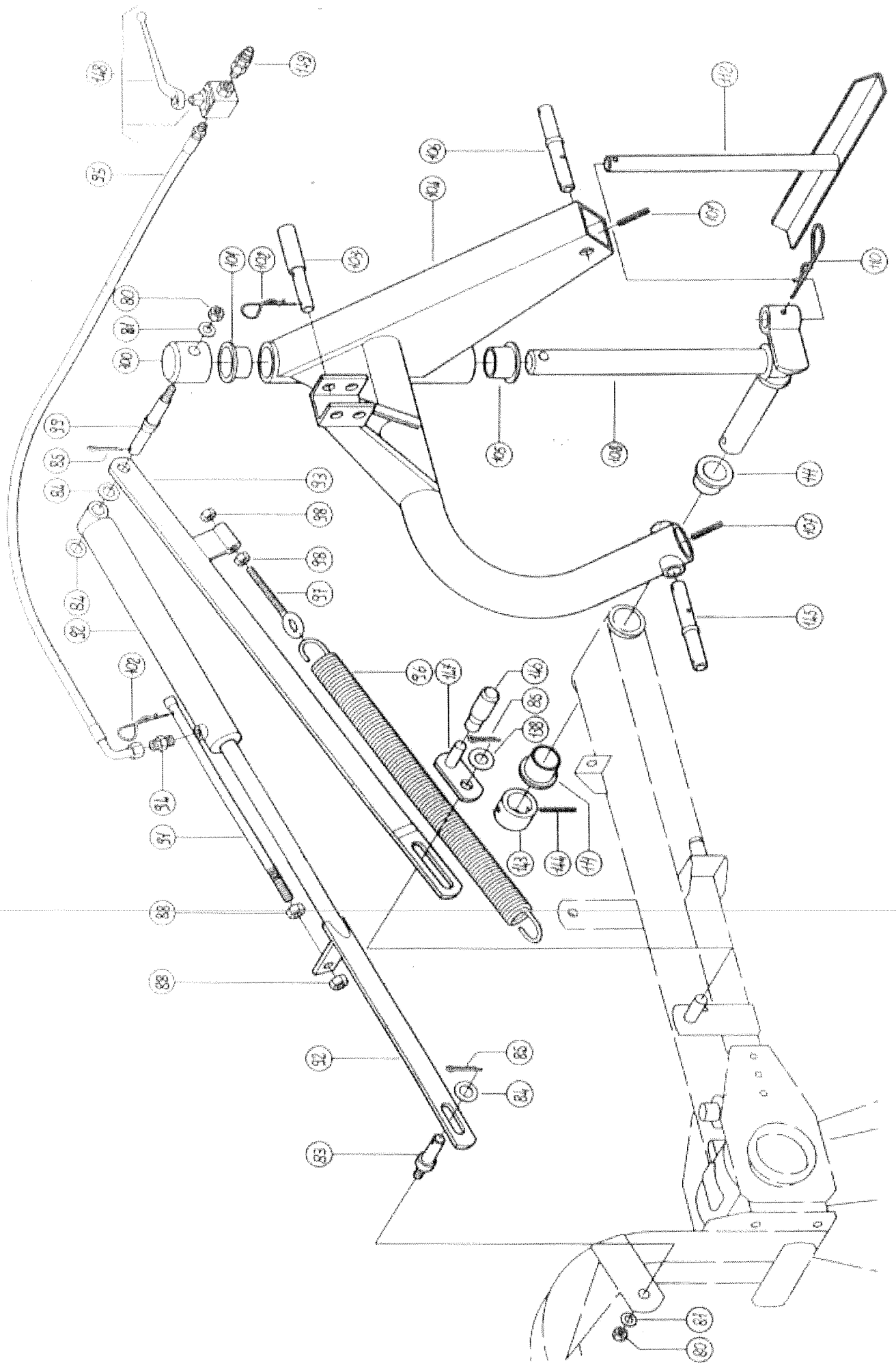
FR/D 245 - FR/D 210 - FR/D 165

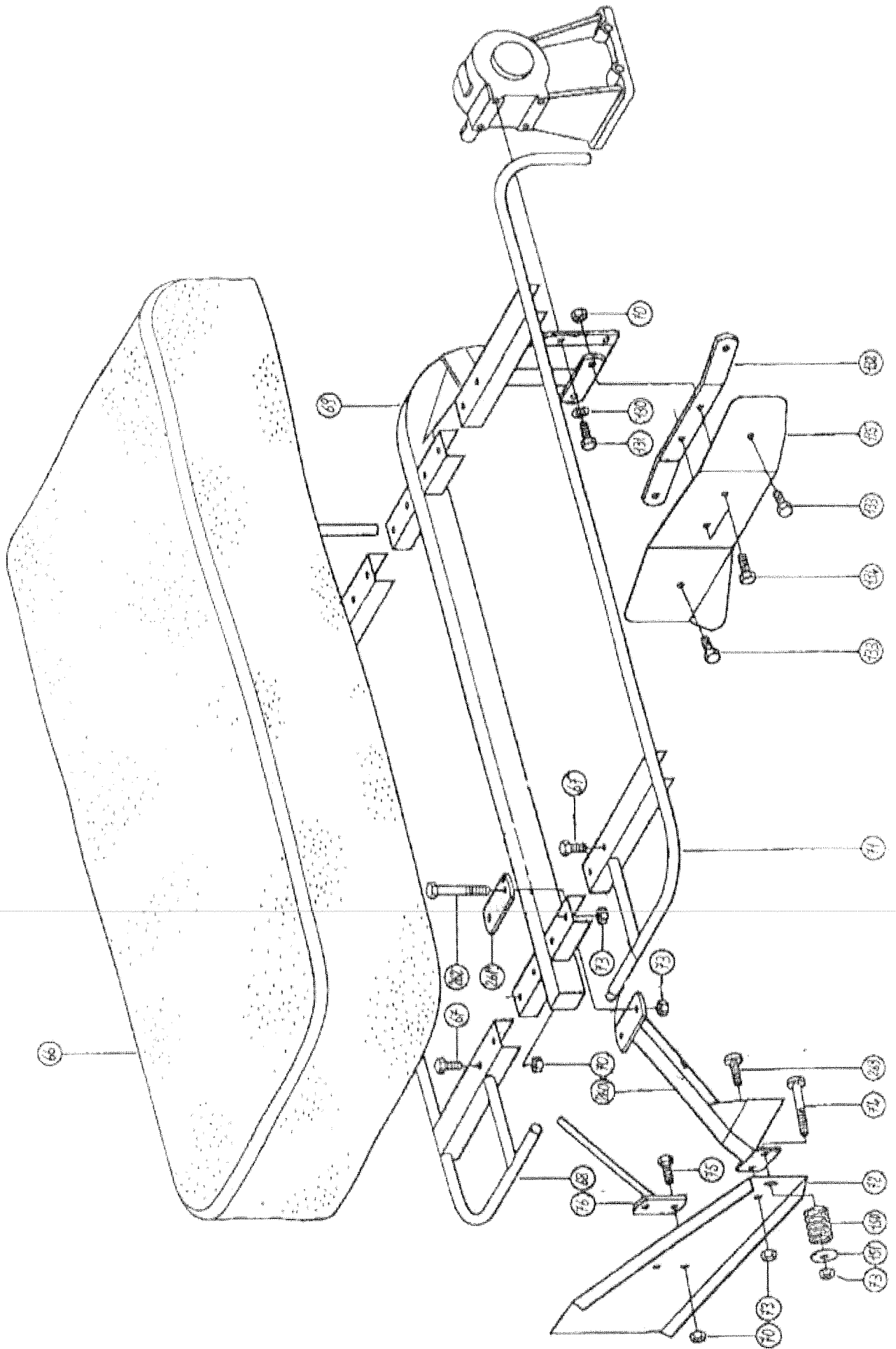


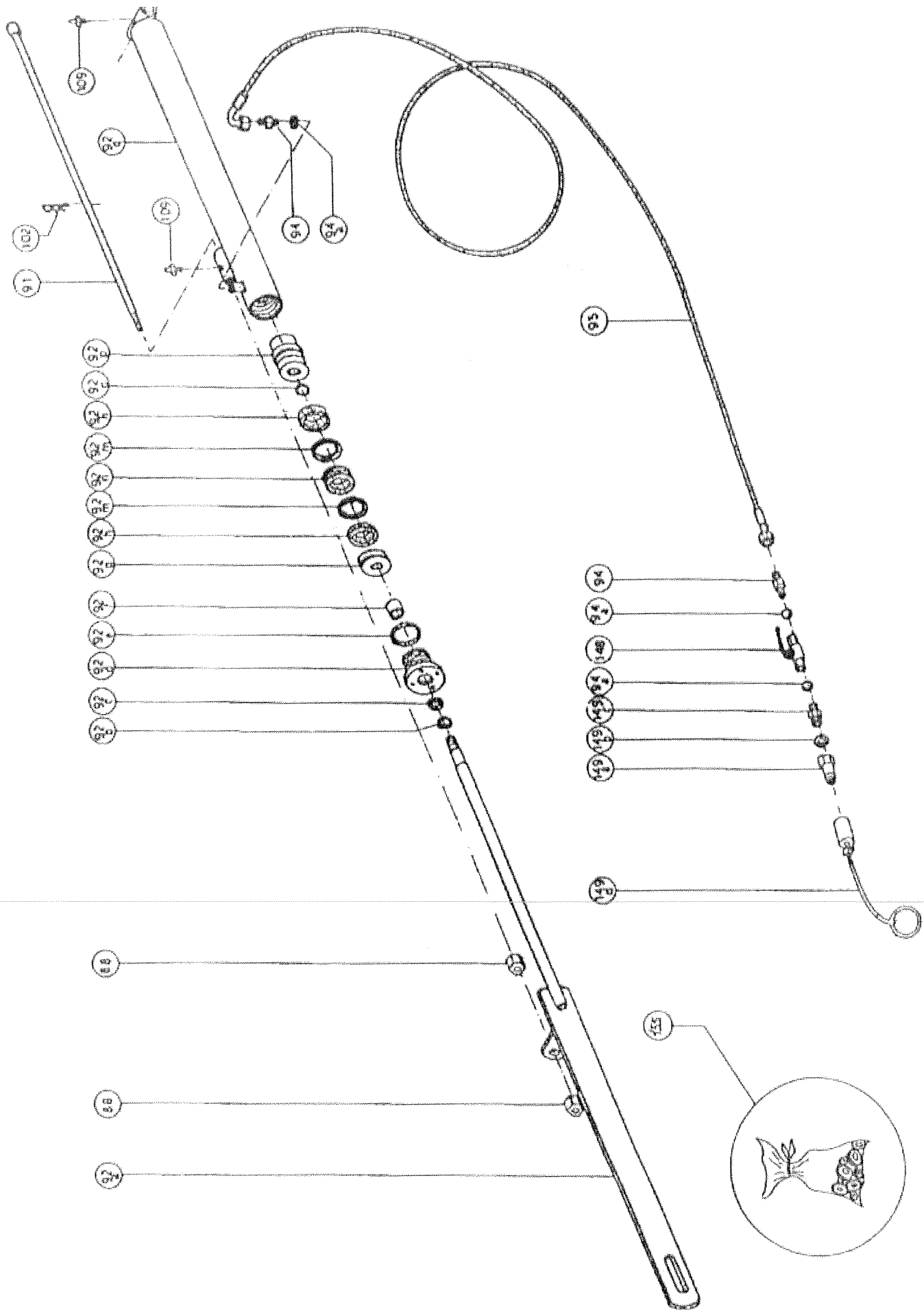












Codice	Descrizione	UM	Moltip. 2"DM	Gr. Mer
0001PRD	HEX. CAP. SCREW M 10X22	GR		PRD
0001PRD P		GR		PRD
0002PRD	COVER	GR		PRD
0002PRD P		GR		PRD
0003PRD	SEAL RING 45X61X10	GR		PRD
0004PRD	BUSHING FOR DR	GR		PRD
0005PRD	PIN Ø 2.126	GR		PRD
0006PRD	ROLL BEARING 10207	GR		PRD
0007PRD	THICKNESS WASHER 35.3X40.0	GR		PRD
0008PRD	SHAFT	GR		PRD
0009PRD	KEY 10X8X7.5	GR		PRD
0010PRD	GEAR	GR		PRD
0011PRD	HOUSING	GR		PRD
0012PRD	PLUG WITH OIL LEVEL ROD	GR		PRD
0013PRD	BALL BEARING 6307	GR		PRD
0014PRD	PLUG 1/8	GR		PRD
0015PRD	RING P. 15	GR		PRD
0016PRD	BUSHING	GR		PRD
0017PRD	RING P. 20	GR		PRD
0018PRD	SEAL RING 35X60X10	GR		PRD
0019PRD	SHAFT	GR		PRD
0020PRD105	BASIN + COVER	GR		PRD
0020PRD210	BASIN + COVER	GR		PRD
0020PRD245	BASIN + COVER	GR		PRD
0021PRD	CONVEYER DISC	GR		PRD
0022PRD	SHO P. 20	GR		PRD
0023PRD	WASHER	GR		PRD
0024PRD	RING	GR		PRD
0025PRD	BALL BEARING 6308 C3	GR		PRD
0026PRD	SPECIAL SCREW M8X25	GR		PRD
0027PRD	BUSHING	GR		PRD
0028PRD	SPECIAL SCREW M20X30	GR		PRD
0029PRD	PLATE FOR HOSE	GR		PRD
0030PRD	PIN	GR		PRD
0031PRD	SPACER	GR		PRD
0032PRD	SWAY RING P. 25	GR		PRD
0033PRD	GEAR	GR		PRD
0034PRD	BALL BEARING 6308 C3	GR		PRD
0035PRD	FREE GRAB	GR		PRD
0036PRD	SPACER	GR		PRD
0037PRD	PIN	GR		PRD
0038PRD	SLIDE PLATE	GR		PRD
0039PRD	ROLL PIN 10X12	GR		PRD
0040PRD	MAX PLUG 1/8	GR		PRD
0041PRD	HEX CAP 1/6	GR		PRD
0042PRD	SPRING WASHER 20X10.2X1.1	GR		PRD
0043PRD	SPACER	GR		PRD
0044PRD	CONVEYER BRACKET	GR		PRD
0045PRD105	BEAR REINFORCEMENT	GR		PRD
0045PRD210	BEAR REINFORCEMENT	GR		PRD
0045PRD245	BEAR REINFORCEMENT	GR		PRD
0046PRD	GEAR	GR		PRD

Code	Description	QM	MULTIP.	STUM	Gr. Mkt
0047FRD	FREE CLAR	NR			FRD
0048FRD	BALL BEARING 6306 2ZC3	NR			FRD
0049FRD	SCREW M 10X12	NR			FRD
0050FRD	PHANIB2 SUPPORT	NR			FRD
0051FRD	CB RING 3112	NR			FRD
0052FRD	SPACER	NR			FRD
0053FRD	SEAL RING	NR			FRD
0054FRD	SPACER	NR			FRD
0055FRD	CAP	NR			FRD
0056FRD	SLIDE PLATE	NR			FRD
0057FRD	BALL BEARING 6206 2RS/C3	NR			FRD
0058FRD	DISC	NR			FRD
0059FRD	HEX NUT M8	NR			FRD
0060FRD	SPRING WASHER	NR			FRD
0061FRD	HEX SELF LOCKING NUT M16	NR			FRD
0062FRD	CAP 40X3	NR			FRD
0063FRD	SPECIAL SCREW	NR			FRD
0064FRD	SCREW M10X15	NR			FRD
0065FRD	SCREW M10X20	NR			FRD
0066FRD	HEX CAP SCREW M12X4512.9	NR			FRD
0066FRD165	RUBBER GUARD FOR FRD165	NR			FRD
0066FRD210	RUBBER GUARD FOR FRD210	NR			FRD
0066FRD245	RUBBER GUARD FOR FRD 245	NR			FRD
0067FRD	TOSS M12X4212.8	NR			FRD
0068FRD	HEX CAP SCREW M10X20	NR			FRD
0068FRD	HEX CAP NUT M12	NR			FRD
0068FRD165	REAR GUARD FOR FRD 165	NR			FRD
0068FRD210	REAR GUARD FOR FRD 210	NR			FRD
0068FRD245	REAR GUARD FOR FRD 245	NR			FRD
0069FRD165	FRAME FOR FRD 165	NR			FRD
0069FRD210	FRAME FOR FRD 210	NR			FRD
0069FRD245	FRAME FOR FRD 245	NR			FRD
0070FRD	HEX CAP SCREW M10	NR			FRD
0071FRD165	FRONT GUARD FOR FRD 165	NR			FRD
0071FRD210	FRONT GUARD FOR FRD 210	NR			FRD
0071FRD245	FRONT GUARD FOR FRD 245	NR			FRD
0072FRD	EXT. CONVEYER	NR			FRD
0073FRD	HEX CAP NUT M12	NR			FRD
0074FRD		NR			FRD
0075FRD	ROUND CAP SCREW M10X25	NR			FRD
0076FRD	GTICP	NR			FRD
0077FRD	SPACER	NR			FRD
0078FRD	WASHER F.12	NR			FRD
0079FRD	HEX CAP SCREW M12X30	NR			FRD
0080FRD	HEX CAP NUT M16	NR			FRD
0081FRD	WASHER F.15	NR			FRD
0082FRD	REAR COVER	NR			FRD
0083FRD	PIN	NR			FRD
0084FRD	WASHER F.21	NR			FRD
0085FRD	COTTON PIN 5.5X70	NR			FRD
0086FRD	SPACER	NR			FRD
0088FRD	HEX. CAP NUT M20	NR			FRD
0091FRD	SAFEMI ROD	NR			FRD
0092FRD	HYDRAULIC CYLINDER	NR			FRD
0093FRD	CONNECTING ROD	NR			FRD
0094FRD	DOUBLE JOINT 1/4"-3/8"	NR			FRD
0095FRD	PURNER HOSE H1 AND G11. TAP	NR			FRD

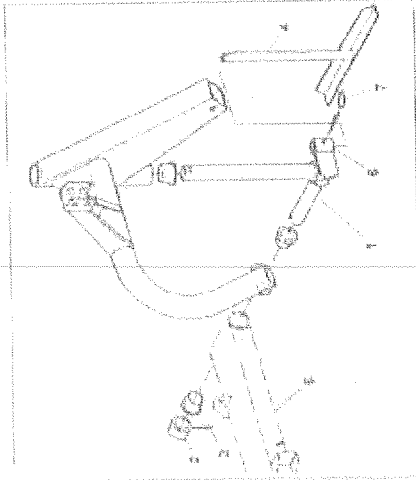
Code	Description	QM	Multip.	ZUM	Gr.	Mer	L
0096FRD	SPRING	HR					FRD
0097FRD	SCREWED RING	HR					FRD
0098FRD	HEX. CAP BUT M14	HR					FRD
0099FRD	LOCKING PIN	HR					FRD
0100FRD	LOCKING CAP	HR					FRD
0101FRD	PLASTIC BUSHING 70X64	HR					FRD
0102FRD	R PIN P.4	HR					FRD
0103FRD	1st POINT PIN	HR					FRD
0104FRD	T POINT PRAND	HR					FRD
0105FRD	BUSHING	HR					FRD
0106FRD	LOWER LINE PIN	HR					FRD
0107FRD	ROLL PIN BR50	HR					FRD
0108FRD	1st POINT SQUARE	HR					FRD
0109FRD	GREASE nipple	HR					FRD
0110FRD	R PIN P.6	HR					FRD
0111FRD	BUSHING P.60X55	HR					FRD
0112FRD	STAMP	HR					FRD
0113FRD	KEY 10X6X50	HR					FRD
0114FRD	SHAFT	HR					FRD
0115FRD	SNAP RING P.35	HR					FRD
0116FRD	FLAT ROD	HR					FRD
0117FRD	HEX. CAP SCREW M16X100	HR					FRD
0118FRD	WASHER P.40	HR					FRD
0119FRD	SPRING	HR					FRD
0120FRD	SNAP PIN	HR					FRD
0121FRD	SAFETY ROD	HR					FRD
0122FRD	CHAIN	HR					FRD
0123FRD	CONNECTING ROD	HR					FRD
0124FRD	HEX. CAP SCREW 12X150	HR					FRD
0125FRD	MAIN FRAME	HR					FRD
0126FRD	HEX. CAP SCREW 14X15	HR					FRD
0127FRD	GLOVER P.14	HR					FRD
0128FRD	HINGE PIECE	HR					FRD
0130FRD	GLOVER P.12	HR					FRD
0131FRD	SCREW 12X30	HR					FRD
0132FRD	ROD FOR CONVEYER	HR					FRD
0133FRD	HEX. CAP SCREW 10X30	HR					FRD
0134FRD	HEX. CAP SCREW 10X30	HR					FRD
0135FRD	HT. CONVEYER	HR					FRD
0136FRD	BEUT 8.98	HR					FRD
0137FRD165	PULLEY 160	HR					FRD
0137FRD210	PULLEY 160	HR					FRD
0137FRD245	PULLEY 160	HR					FRD
0138FRD	WASHER P.24	HR					FRD
0138FRD165	PULLEY 120	HR					FRD
0138FRD210	PULLEY 120	HR					FRD
0138FRD245	PULLEY 120	HR					FRD
0140FRD	FRONT COVER	HR					FRD
0141FRD	BALL BEARING 6207/2RS	HR					FRD
0142FRD	SHAFT'S SUPPORT	HR					FRD
0143FRD	BUSHING	HR					FRD
0144FRD	ROD. PIN 12X70	HR					FRD
0145FRD	LOWER LINE PIN	HR					FRD
0146FRD	KNOB	HR					FRD
0147FRD	LOCKING LEVER	HR					FRD
0148FRD	OIL TAP 1/4"	HR					FRD
0149FRD	QUICK COUPLING	HR					FRD

Code	Description	QTY	Multip.	20UM	Gr. Mes
0100PRD	SPRING F. 8X35	1	NR		PRD
0101PRD	WASHER 12 E 35	1	NR		PRD
0102PRD	RIGHT KNIFE	1	NR		PRD
0103PRD	LEFT KNIFE	1	NR		PRD
0104PRD		1	NR		PRD
0105PRD	G. RING 4375	1	NR		PRD
0106PRD	SCREW M 12	1	NR		PRD
0107PRD	SPACER	1	NR		PRD
0108PRD	WASHER	1	NR		PRD
0200PRD	CLOSING PLATE	1	NR		PRD
0201PRD	OUT COARD	1	NR		PRD
0202PRD	SCREW M10X2219.9	1	NR		PRD
0203PRD	SCREW M10X1512.9	1	NR		PRD
0204PRD	HEX. NUT M12	1	NR		PRD

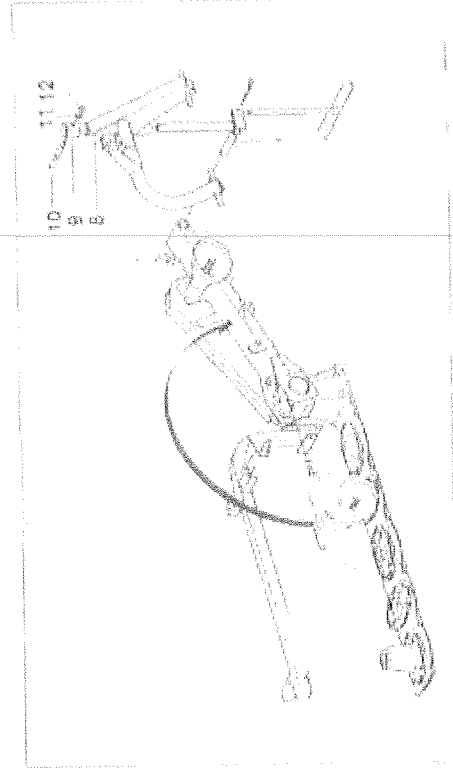
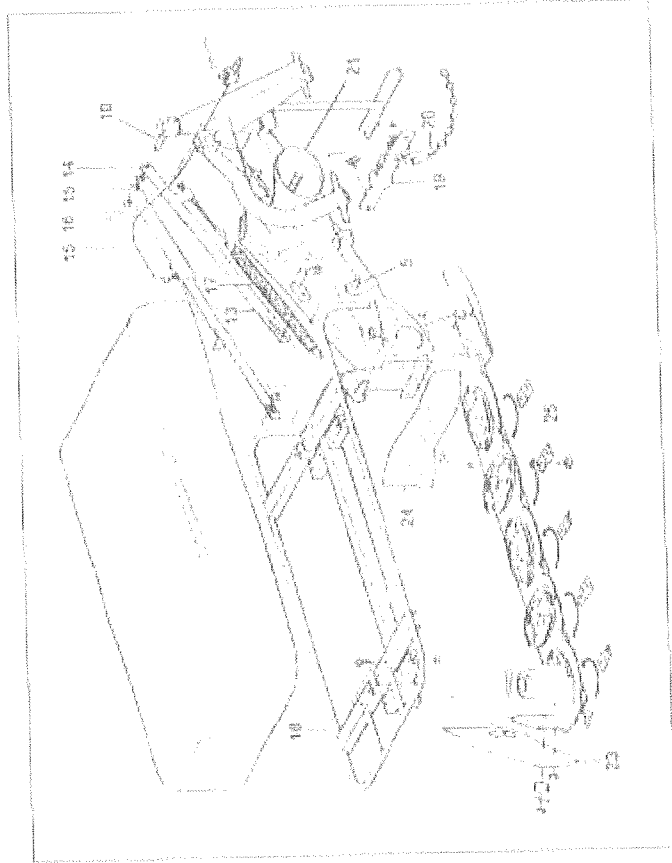
FR/D MOWER ASSEMBLY

To facilitate despatch and reduce transportation costs, the mowers are packed in crates and therefore certain parts are delivered partially disassembled. To assemble the mower proceed as follows.

- 1) Attach the three point linkage carrier square Fig. 17 (no. 1) to the support arm no. 5 of the mower securing it with bush no. 2 and the elastic pin no.3.
Insert the prop no. 4 into the relative bush no. 6 and fix it with the spring pin no. 7.
Always grease the pins before assembly.
- 2) Open the mower Fig. 18 (broken line)
- 3) Insert the three point linkage Fig. 18 no. 8, on the linkage carrier square no. 1.
Fix using the locking casing no. 9 secured by means of the check pin no. 10, washer no. 11 and the locking nut no. 12.



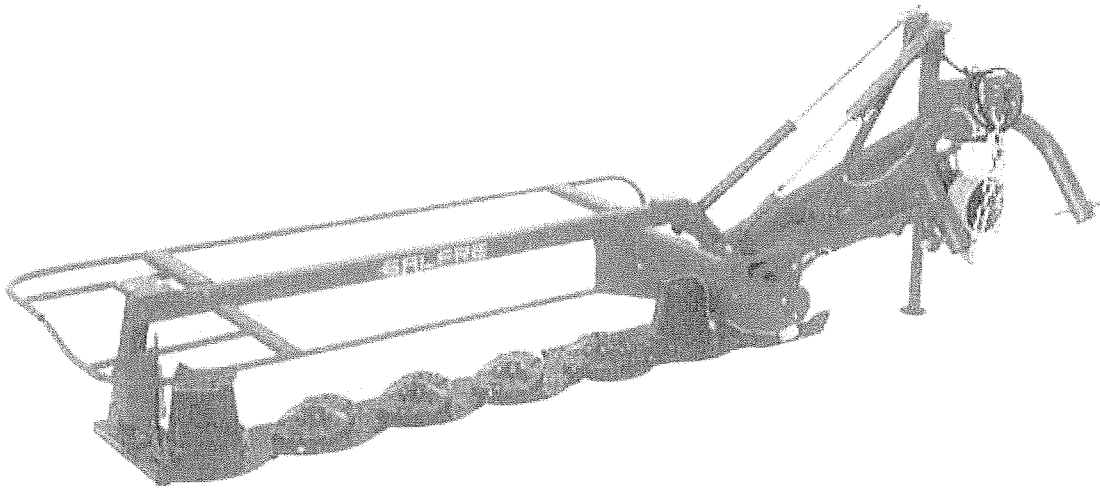
- 4) Insert the pin (fig. 19 no. 10) into the tie rod with slit (no. 13) then insert the diam. 21 washer (no. 14) and then the hydraulic cylinder with relative rubber housing and cap (no. 15) and another diam. 21 washer (no. 14) as secured with a spring clip (no. 16)
 - 5) Hitch the large spring (no. 17) to the tie rod with slit (no. 13) then proceed with the assembly of the protective element support frame (Fig. 19, no. 18)
 - 6) Hitch both the large spring (Fig. 19 no. 17) and the tie rod with slit (Fig. 19 no. 13) to the support arm pin (Fig. 19 no. 5)
- Undertake to mount the safety release element (Fig. 19 no. 19) incorporating the chain (Fig. 19 no. 21). Assemble the protective casing (Fig. 19 no. 21)
- Proceed with assembly of swath regulator (Fig. 19 no. 23 and no. 24)
- Assembly of protection bars (Fig. 19 no. 18) right and left.
- Blade assembly (no. 25).
- Complete canvas covering.



CURTIS DISC MOWER

FRD245

SPARE PARTS

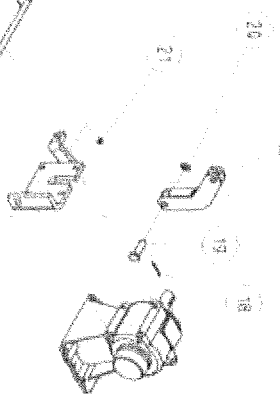
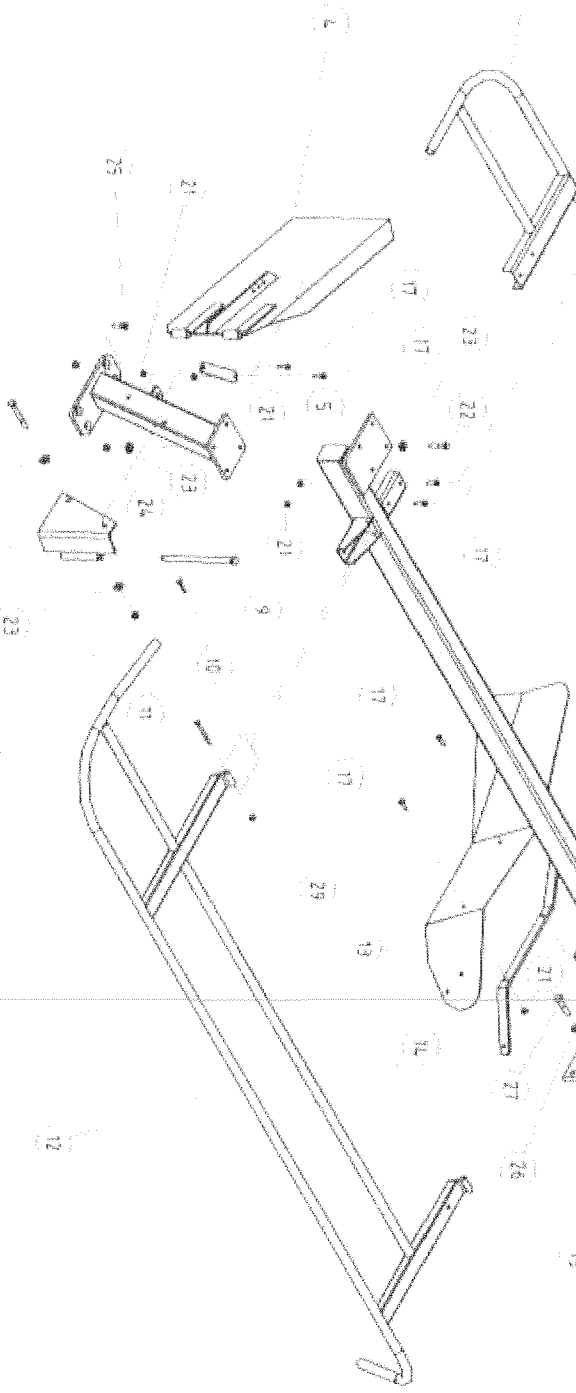
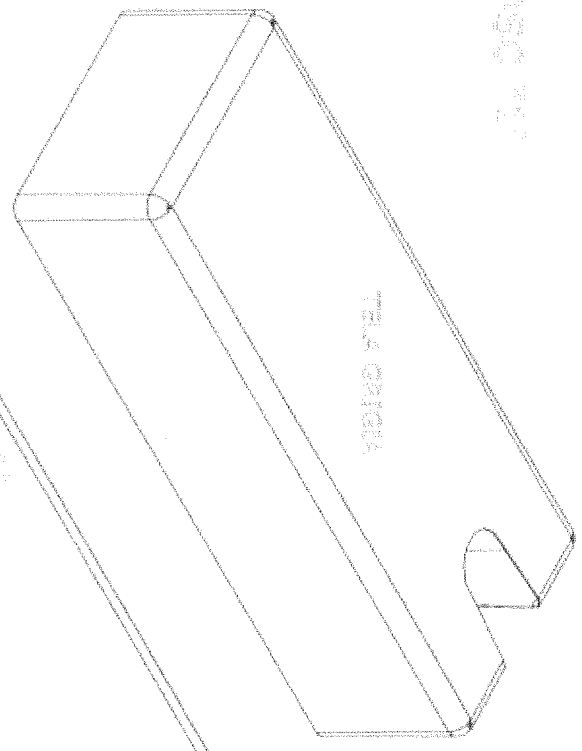


DISC MOWING MACHINES

FR/D_P

FR/D_P 245

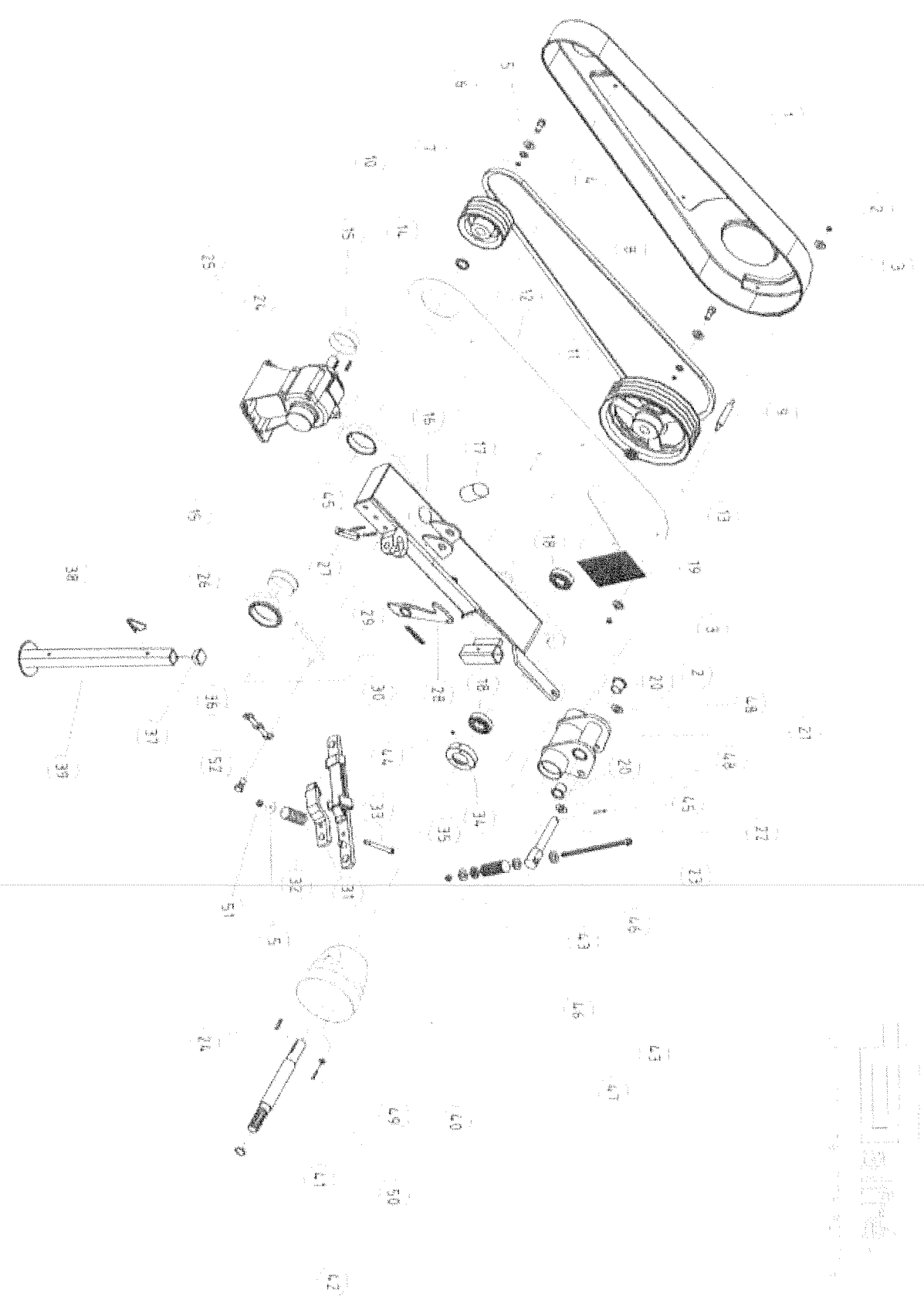
66640500 7/17



6
7
8
9
10
11
12
13
14
15
16
17
18
19
20
21
22
23
24
25
26
27
28
29

N°	CODE	DESCRIPTION	Q.TY
1		GRAY CLOTH FRD 210	1
		GRAY CLOTH FRD 245	1
		GRAY CLOTH FRD 285	1
2		FRAME SUPPORT FRD 210	1
		FRAME SUPPORT FRD 245	1
		FRAME SUPPORT FRD 285	1
3		REAR PROTECTION FRD 210	1
		REAR PROTECTION FRD 245	1
		REAR PROTECTION FRD 285	1
4		EXTERNAL WINDROW DEFLECTOR	1
5		BLADE FOR WINDROW MAKER	1
6		SUPPORT	1
7		SCREW T.E. M12X90	2
8		ATTACHMENT FOR WINDROW MAKER	1
9		PIN FOR WINDROW MAKER	1
10		COTTER PIN 5	1
11		SCREW T.E. M8X80	2
12		FRONT PROTECTION FRD 210	1
		FRONT PROTECTION FRD 245	1
		FRONT PROTECTION FRD 285	1
13		INSIDE WINDROW DEFLECTOR	1
14		BLADE FOR INSIDE WINDROW MAKER	1
15		PLATE FOR BOOMERANG	1
16		BOOMERANG	1
17		SCREW M10X30	11
18		SPRING PIN 6X50	1
19		PIN FOR BOOMERANG	1
20		WASHER 26-21X3	1
21		HEX NUT M10	11
22		SCREW M12X45	4
23		WASHER 24-13X2.5	8
24		HEX NUT M12	4
25		SCREW T.S.E.I. M12X40	4
26		WASHER 30-15X3	4
27		SCREW T.E. M12X45	4

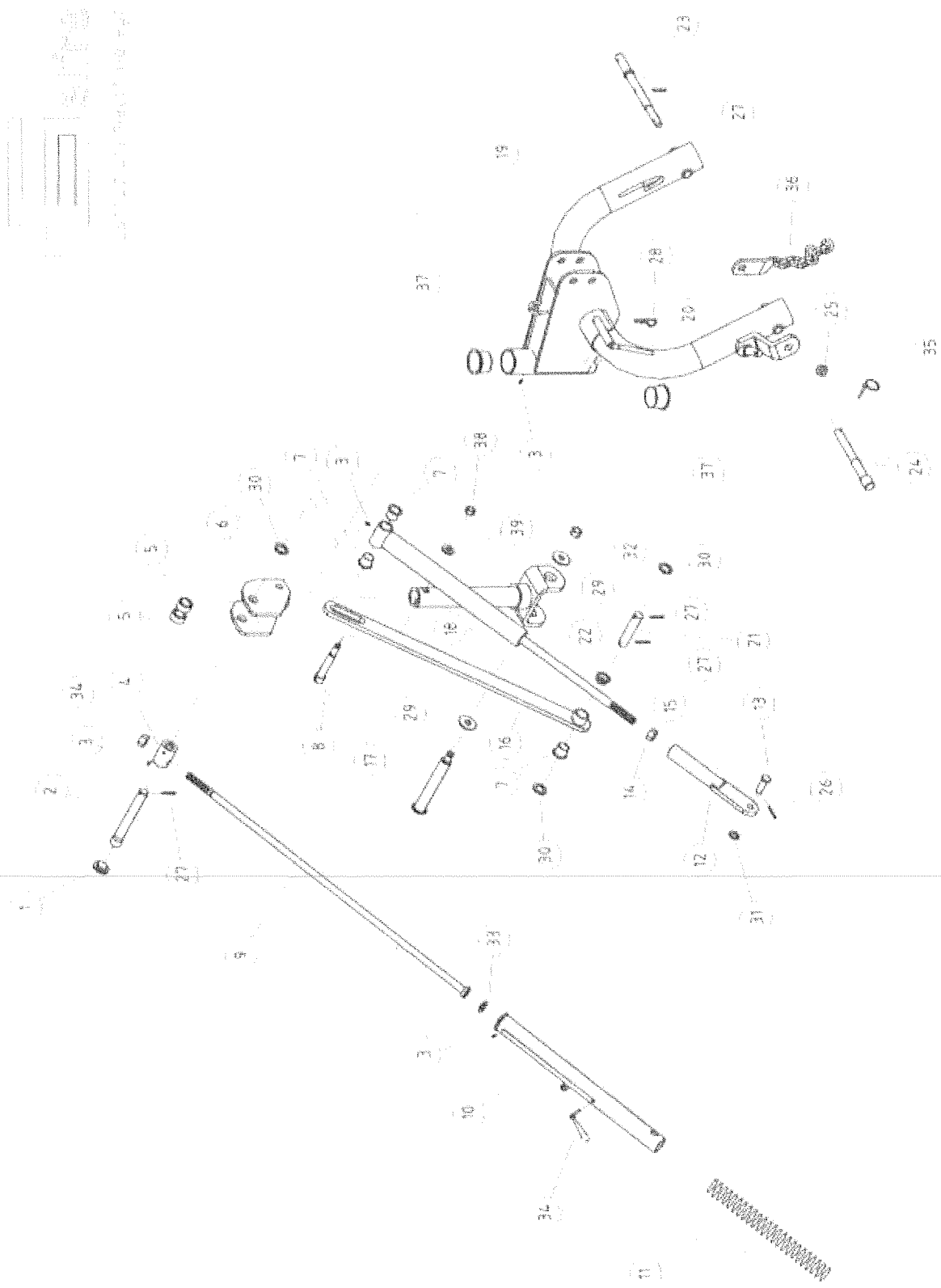
3000000000



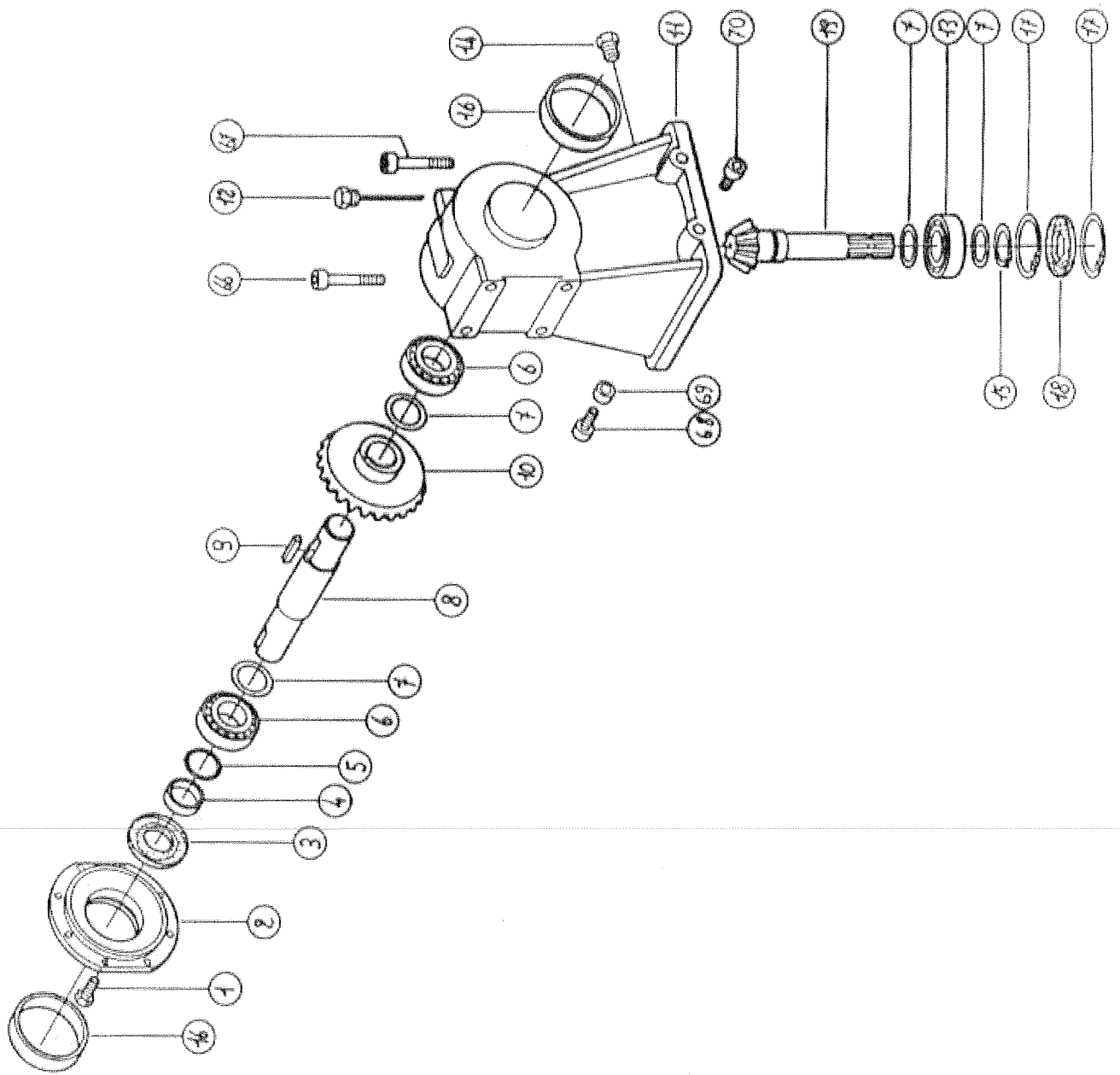
Nº	CODE	DESCRIPTION	Q.TY
1		PLASTIC GUARD	1
2		NUT HEX SELF LOCKING M10	10
3		WASHER 24-13-X2	10
4		SCREW T.E. M12X35	2
5		WASHER 40-13X6	2
6		LOCK WASHER 24-13X1	2
7		LOCK WASHER 18-13X1	2
8		BELT	4
9		THREADED PIN	5
10		SMALL PULLEY	1
11		BIG PULLEY	1
12		REAR GYARD	1
13		SPACER 48-36X2	1
14		SPACER 48-36X4	1
15		PLASTIC BUSHING	2
16		SUPPORT	1
17		RUBBER PAWL	1
18		BEARING 80X35X21	2
19		SAFETY ASSEMBLED	1
20		PLASTIC BUSHING	
21		MAIN PIVOTING	2
22		HEXAGONAL PIN	1
23		THREADED TURNBUCKLE	1
24		KEY 10X8X5	1
25		GROUP	2
26		BUCKET	1
27		SECURITY PIN	1
28		SAFETY BURNER	1
29		SPRING FOR BURNER	1
30		SAFETY FOR CURVE	1
31		SAFETY HOOK FOR CURVE	1
32		SAFETY SPRING FOR CURVE	1
33		SCREW T.E. M12X150	1
34		ATTACH FOR GUARD	1
35		SPRING FOR BACKSTAND	1
36		CLAMP FOR BOLT	1
37		CAP FOR STAND	1

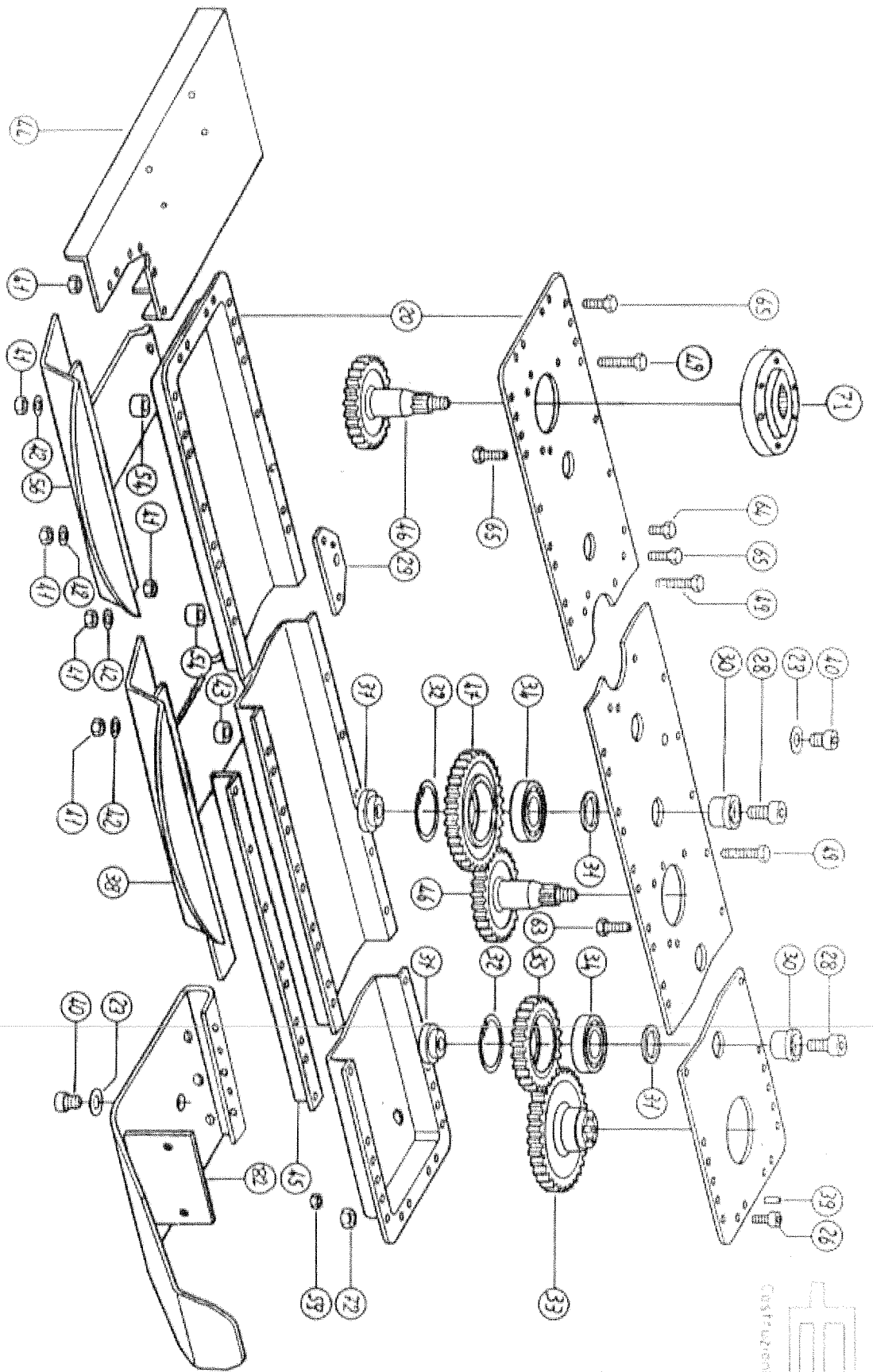
Nº	CODE	DESCRIPTION	Q.TY
38		PIN FOR STAND D=10	1
39		STAND	1
40		GUARD	1
41		SHAFT	1
42		SEEGER RING FOR SHAFT 35	1
43		PAWL FOR SPRING	2
44		BOLT WITHOUT HEAD M8	3
45		SPRING PIN 6X50	3
46		WASHER 28-15X2	2
47		NUT HEX SELF LOCKING M14	1
48		WASHER 47-27X5	2
49		WASHER 24-8X2	3
50		SCREW T.E. M6X15	3
51		NUT HEX SELF LOCKING M12	1
52		SCREW T.E. M14X35	3

EXPLOSO "3"

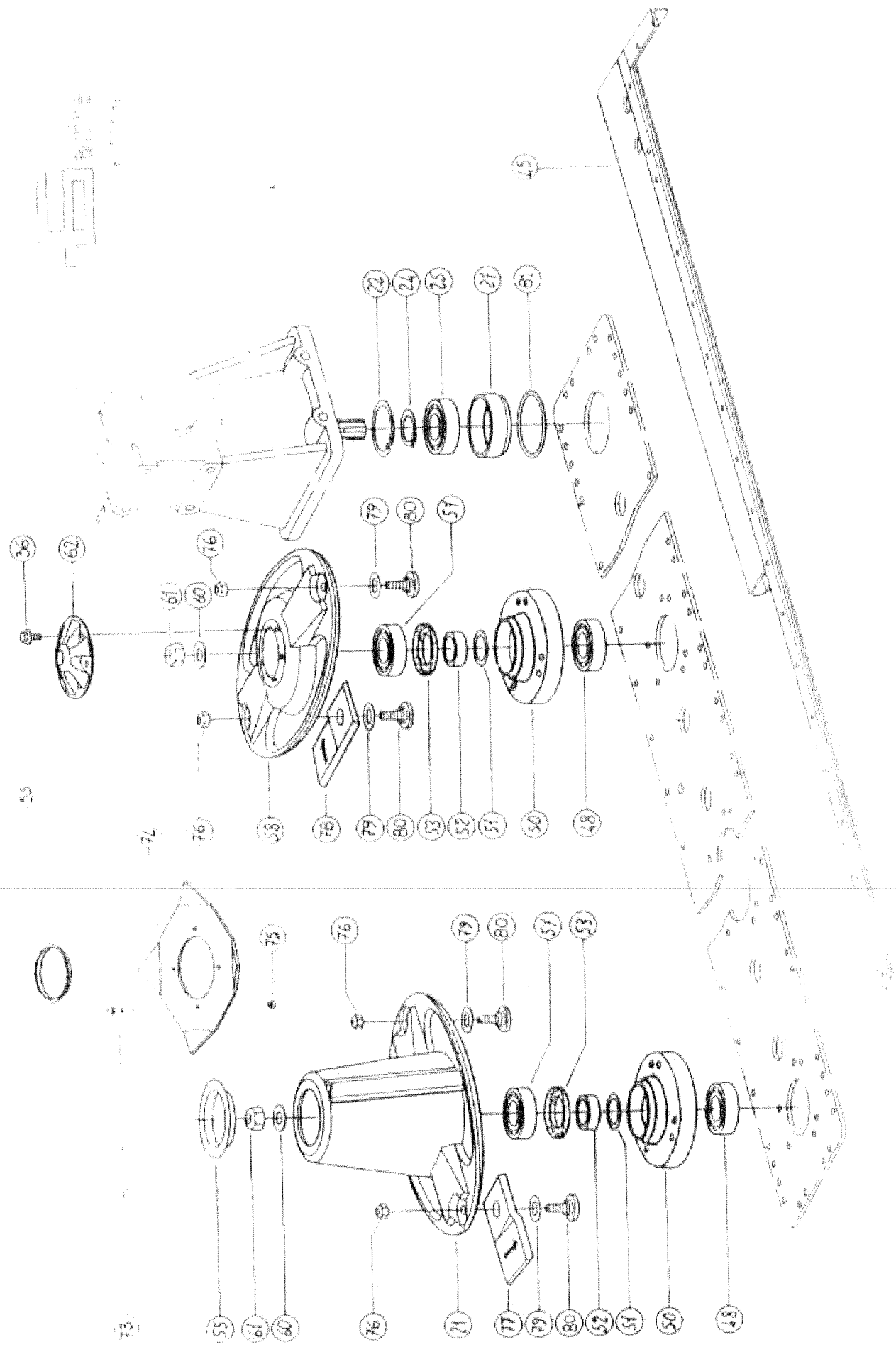


Nº	CODE	DESCRIPTION	Q.TY
1		PLASTIC CAP	1
2		PIVOT	1
3		GREASER M8X1	4
4		BUSHING FOR TURNBUCKLE	1
5		SPACER	2
6		ATTACHMENT GUARD	1
7		LONG PLASTIC BUSHING	3
8		PIVOT FOR GUARD	1
9		TURNBUCKLE STAFF	1
10		TURNBUCKLE COVER	1
11		SPRING FOR TURNBUCKLE STAFF	1
12		ATTACHMENT FOR PISTON	1
13		PIVOT D30-20	1
14		HEX CAP M22	1
15		SHORT PLASTIC BUSHING	1
16		PLATE FOR TURNBUCKLE	1
17		PIVOT FOR SUPPORT PIVOTING	1
18		PISTON	1
19		COMPLETE CURVE	1
20		PIVOT FOR 3PT.HH.WITH HANDLE	1
21		PIVOT WITH 2 HOLES	1
22		SUPPORT PIVOTING	1
23		LIFTING PIVOT L.H.	1
24		LIFTING PIVOT R.H.	1
25		SPACER D30-27 L=15	1
26		SPRING PIN 6X50	1
27		SPRING PIN 8X50	4
28		COTTER PIN "R" 5	1
29		WASHER 60-21X5	2
30		WASHER 47-31X5	2
31		WASHER 26-21X3	1
32		NUT HEX SELF LOCKING M20	1
33		WASHER 43.5-23-X3.5	1
34		PIN WITH TOMGUE	1
35		AUTOMATIC PIN	1
36		CHAIN ATTACHMENT	1
37		PLASTIC BUSHING FOR CURVE	2
38		NUT HEX SELF LOCKING M18	1
39		WASHER 40-19X6	1





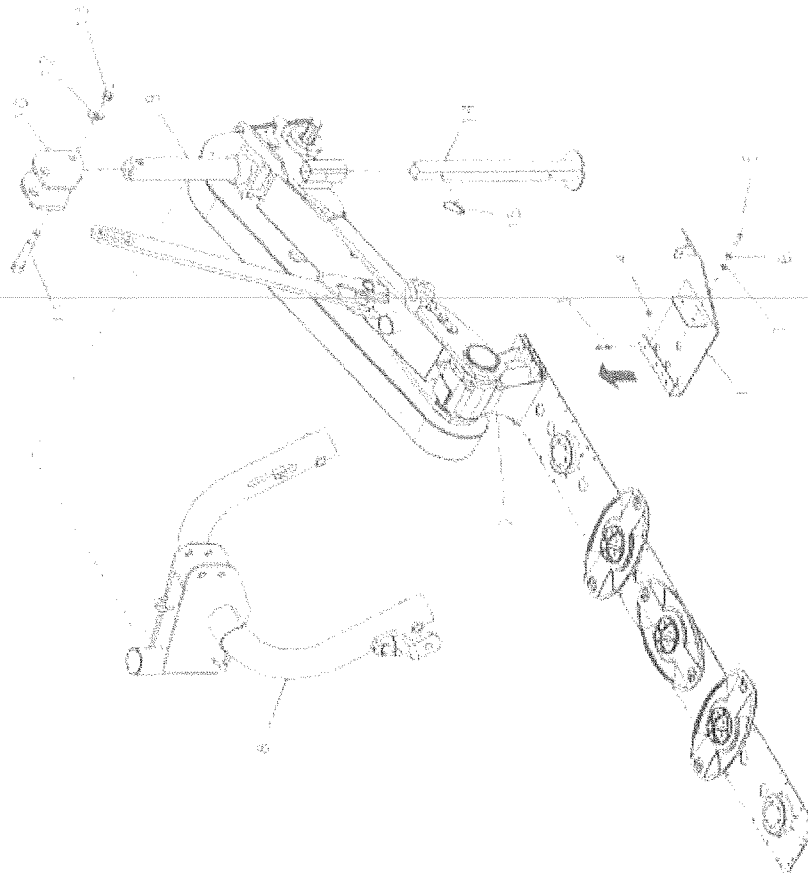
5
6
7
8
9
10
11
12
13
14
15
16
17
18
19
20
21
22
23
24
25
26
27
28
29
30
31
32
33
34
35
36
37
38
39
40
41
42
43
44
45
46
47
48
49
50
51
52
53
54
55
56
57
58
59
60
61
62
63
64
65
66
67
68
69
70
71
72
73
74
75
76
77
78
79
80
81
82
83
84
85
86
87
88
89
90
91
92
93
94
95
96
97
98
99
100
101
102
103
104
105
106
107
108
109
110
111
112
113
114
115
116
117
118
119
120
121
122
123
124
125
126
127
128
129
130
131
132
133
134
135
136
137
138
139
140
141
142
143
144
145
146
147
148
149
150
151
152
153
154
155
156
157
158
159
160
161
162
163
164
165
166
167
168
169
170
171
172
173
174
175
176
177
178
179
180
181
182
183
184
185
186
187
188
189
190
191
192
193
194
195
196
197
198
199
200
201
202
203
204
205
206
207
208
209
210
211
212
213
214
215
216
217
218
219
220
221
222
223
224
225
226
227
228
229
230
231
232
233
234
235
236
237
238
239
240
241
242
243
244
245
246
247
248
249
250
251
252
253
254
255
256
257
258
259
260
261
262
263
264
265
266
267
268
269
270
271
272
273
274
275
276
277
278
279
280
281
282
283
284
285
286
287
288
289
290
291
292
293
294
295
296
297
298
299
300
301
302
303
304
305
306
307
308
309
310
311
312
313
314
315
316
317
318
319
320
321
322
323
324
325
326
327
328
329
330
331
332
333
334
335
336
337
338
339
340
341
342
343
344
345
346
347
348
349
350
351
352
353
354
355
356
357
358
359
360
361
362
363
364
365
366
367
368
369
370
371
372
373
374
375
376
377
378
379
380
381
382
383
384
385
386
387
388
389
390
391
392
393
394
395
396
397
398
399
400
401
402
403
404
405
406
407
408
409
410
411
412
413
414
415
416
417
418
419
420
421
422
423
424
425
426
427
428
429
430
431
432
433
434
435
436
437
438
439
440
441
442
443
444
445
446
447
448
449
450
451
452
453
454
455
456
457
458
459
460
461
462
463
464
465
466
467
468
469
470
471
472
473
474
475
476
477
478
479
480
481
482
483
484
485
486
487
488
489
490
491
492
493
494
495
496
497
498
499
500
501
502
503
504
505
506
507
508
509
510
511
512
513
514
515
516
517
518
519
520
521
522
523
524
525
526
527
528
529
530
531
532
533
534
535
536
537
538
539
540
541
542
543
544
545
546
547
548
549
550
551
552
553
554
555
556
557
558
559
560
561
562
563
564
565
566
567
568
569
570
571
572
573
574
575
576
577
578
579
580
581
582
583
584
585
586
587
588
589
590
591
592
593
594
595
596
597
598
599
600
601
602
603
604
605
606
607
608
609
610
611
612
613
614
615
616
617
618
619
620
621
622
623
624
625
626
627
628
629
630
631
632
633
634
635
636
637
638
639
640
641
642
643
644
645
646
647
648
649
650
651
652
653
654
655
656
657
658
659
660
661
662
663
664
665
666
667
668
669
670
671
672
673
674
675
676
677
678
679
680
681
682
683
684
685
686
687
688
689
690
691
692
693
694
695
696
697
698
699
700
701
702
703
704
705
706
707
708
709
710
711
712
713
714
715
716
717
718
719
720
721
722
723
724
725
726
727
728
729
730
731
732
733
734
735
736
737
738
739
740
741
742
743
744
745
746
747
748
749
750
751
752
753
754
755
756
757
758
759
760
761
762
763
764
765
766
767
768
769
770
771
772
773
774
775
776
777
778
779
780
781
782
783
784
785
786
787
788
789
790
791
792
793
794
795
796
797
798
799
800
801
802
803
804
805
806
807
808
809
810
811
812
813
814
815
816
817
818
819
820
821
822
823
824
825
826
827
828
829
830
831
832
833
834
835
836
837
838
839
840
841
842
843
844
845
846
847
848
849
850
851
852
853
854
855
856
857
858
859
860
861
862
863
864
865
866
867
868
869
870
871
872
873
874
875
876
877
878
879
880
881
882
883
884
885
886
887
888
889
890
891
892
893
894
895
896
897
898
899
900
901
902
903
904
905
906
907
908
909
910
911
912
913
914
915
916
917
918
919
920
921
922
923
924
925
926
927
928
929
930
931
932
933
934
935
936
937
938
939
940
941
942
943
944
945
946
947
948
949
950
951
952
953
954
955
956
957
958
959
960
961
962
963
964
965
966
967
968
969
970
971
972
973
974
975
976
977
978
979
980
981
982
983
984
985
986
987
988
989
990
991
992
993
994
995
996
997
998
999
1000



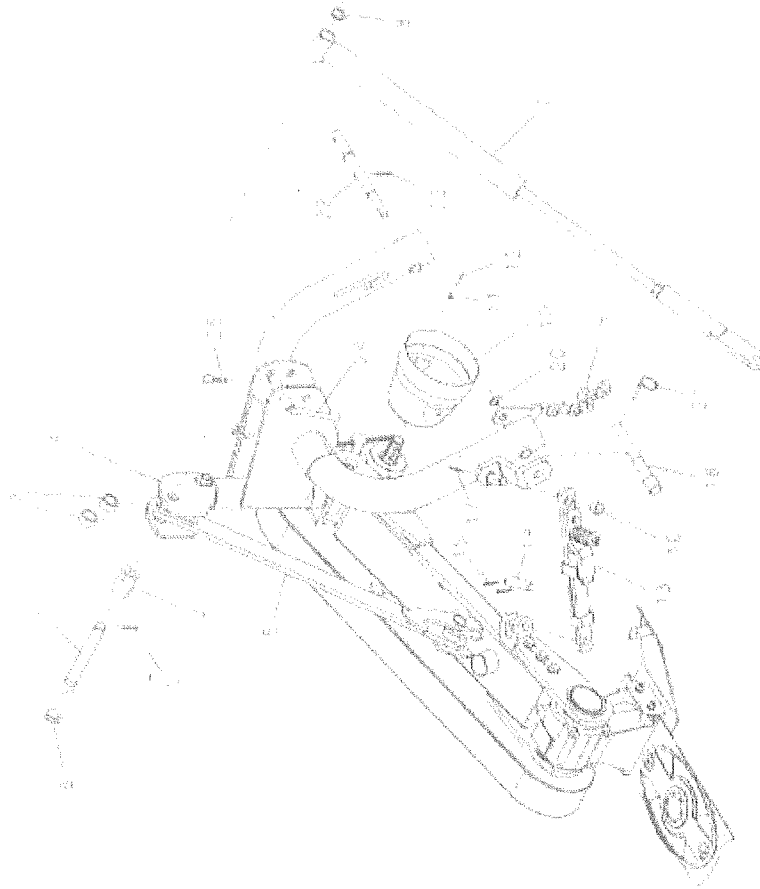
Nº	CODE	DESCRIPTION	Q.TY
1		SCREW T.E. M10X25	8
2		COVER	1
3		RETAINING RING	1
4		BUSHING OR	1
5		GASKET T2-126	1
6		BEARING ROLLER	2
7		SPACER 35.3X48.0	4
8		SHAFT	1
9		PLATE 10X8X35	1
10		CROWN CONICAL	1
11		BOX	1
12		OIL CAP LEVER 3/8 GAS	1
13		BALL BEARING 6307	1
14		OUTLET PLUG 3/8 GAS	1
15		RING FOR SHAFT 35	1
16		BUSHING	2
17		RING FOR SHAFT 35	2
18		RETAINING RING 35X80X10	1
19		SHAFT WITH PINION	1
20		COVER 210	1
		BATH 210	1
		COVER 245	1
		BATH 245	1
		COVER 285	1
		BATH 285	1
21		PLATE WITH CAN	2
22		RING FOR HOLE D. 80	1
23		WASHER FOR SCREW	3
24		SEEGER RING	1
25		BEARING 6208 C3	1
26		SCREW T.C.E.L. M8X25	4
27		BUSHING FOR BEARING	1
28		SCREW T.C.E.L. M8X30	12
29		SUPPORT FOR HOOK	1
30		BUSHING FOR BEARING	12
31		SPACER	12
32		ELASTING RING FOR SHAFT	12
33		GEARS	1
34		BEARING 6208 C3	12
35		GEAR IDLE	2

36		FLANGE SCREWHEAD M10X20	36
37		THREADED BUSHING	12
38		SKID SUPPORT	1
39		SPRING PIN 10X12 D1481	2
40		HEX PLUG 3/8 GAS	2
41		HEX NUT M10	86
42		BELLEVILLE SPRING 20X10.2X1.1	5
43		SPACER	2
44		SUPPORT FOR SIDE CONVEYOR	1
45		REAR SUPPORT DMP 210	1
		REAR SUPPORT DMP 245	1
		REAR SUPPORT DMP 285	1
46		ASSEMBLED GEAR	6
47		GEAR IDLE	8
48		BEARING 6306 2Z C3	6
49		SCREW M10X52	5
50		SUPPORT FOR BEARING	6
51		GASKET OR-3112	6
52		SPACER	6
53		RETAINING RING 40X56X8	6
54		SPACER	3
55		COVER	2
56		SLIDING SUPPORT	5
57		BEARING 6206 2RS C3	6
58		DISC PLATE	4
59		HEX NUT M8	4
60		BELLEVILLE SPRING	6
61		NUT HEX SELF LOCKING M18	6
62		COVER FOR DISC	6
63		SCREW FOR LOW BATH	3
64		SCREW FOR BATH M10X20	24
65		SCREW FOR BATH M10X30	49
66		SCREW T.C.E.I. M12X45	3
67		SCREW T.C.E.I. M12X40	5
68		SCREW T.C.E.I. M10X35	2
69		SPACER	2
70		SCREW T.C.E.I. M10X20	2
71		BUSHING ASSEMBLE INSIDE	6
72		HEX NUT M12	8
73		SCREW T.E. M10X25	4
74		CONVEAR HAT	1
75		NUT HEX M10	4
76		FLANGE NUT M12	12
77		CUTTER DX	6
78		CUTTER SX	6
79		WASHER	12
80		PIVOT FOR CUTTER	12
81		GASKET OR	1
82		FRONT SUPPORT	1

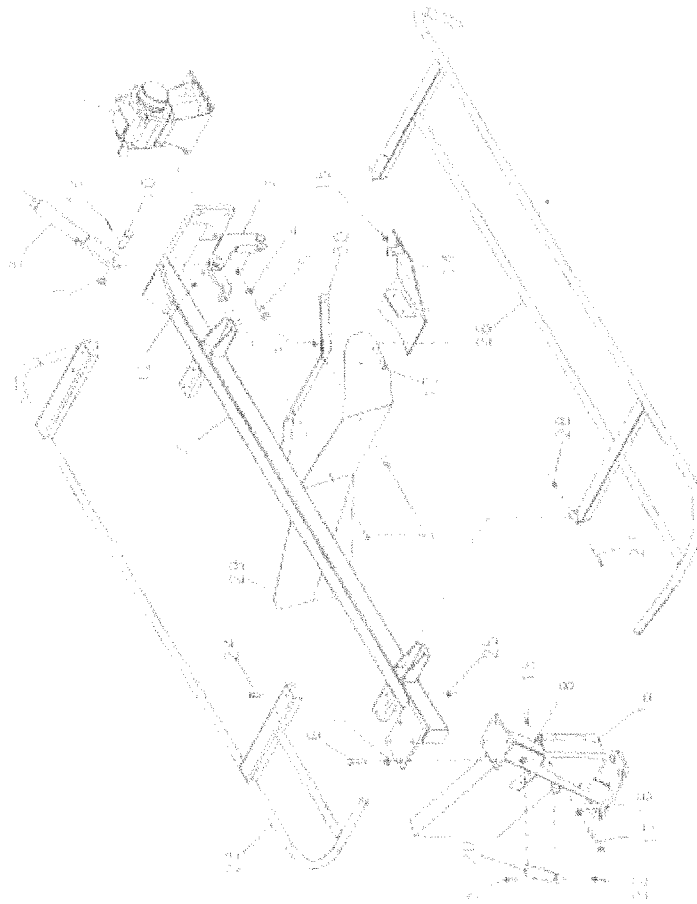
P-FR/D MOWER ASSEMBLY



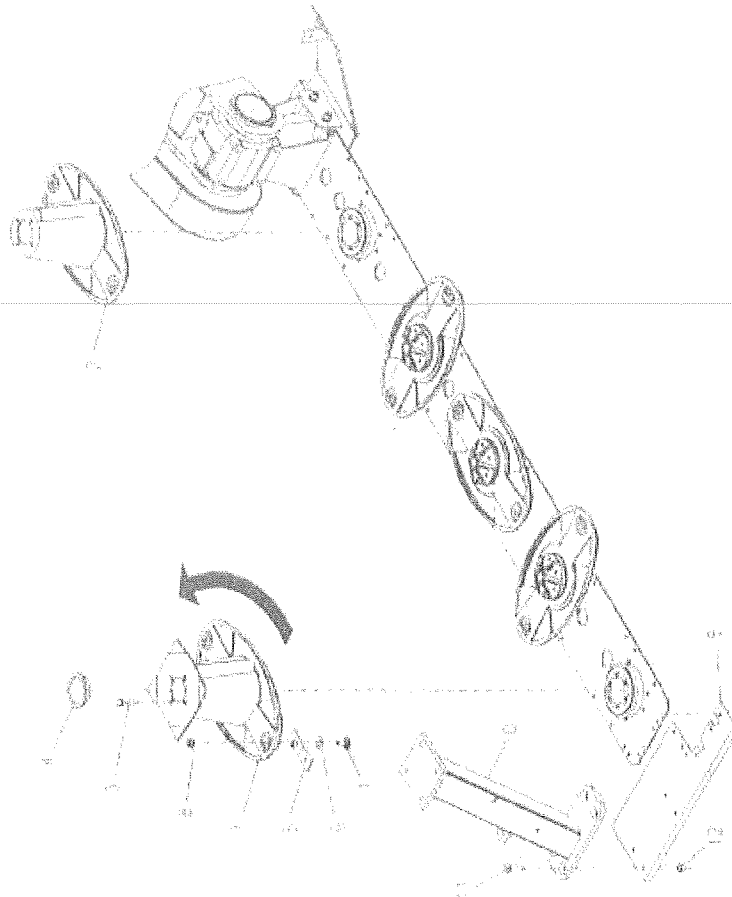
UNPACK THE MACHINE AND PROCEED WITH THE ASSEMBLY OF THE SHOE SUPPORT (11) TO THE TRANSMISSION GROUP (2). THE SHOE MUST BE FIRED WITH 3 SCREWS (12), 2 NUTS (13) WHICH ARE ALREADY PREASSEMBLED ONTO THE TRANSMISSION GROUP ON THE REAR SIDE. THE FRONT PART OF THE SHOE IS FIRED AS PER DRAWING WITH 2 SCREWS (10), 2 WASHERS (11), 2 SCREWS (14) AND 2 FLAT WASHER (7). INSERT THE COMPLETE CURVE (8) ONTO THE MOUNTING PIN (9) AND SECURE WITH A CAP (14), A PIN FOR THE CAP (11), A WASHER (12) AND A SELF-LOCKING NUT (13). SLIDE THE STAND (14) INTO ITS SUPPORT AS PER DRAWING AND FIX WITH A PIN/LOCK D TO (15).



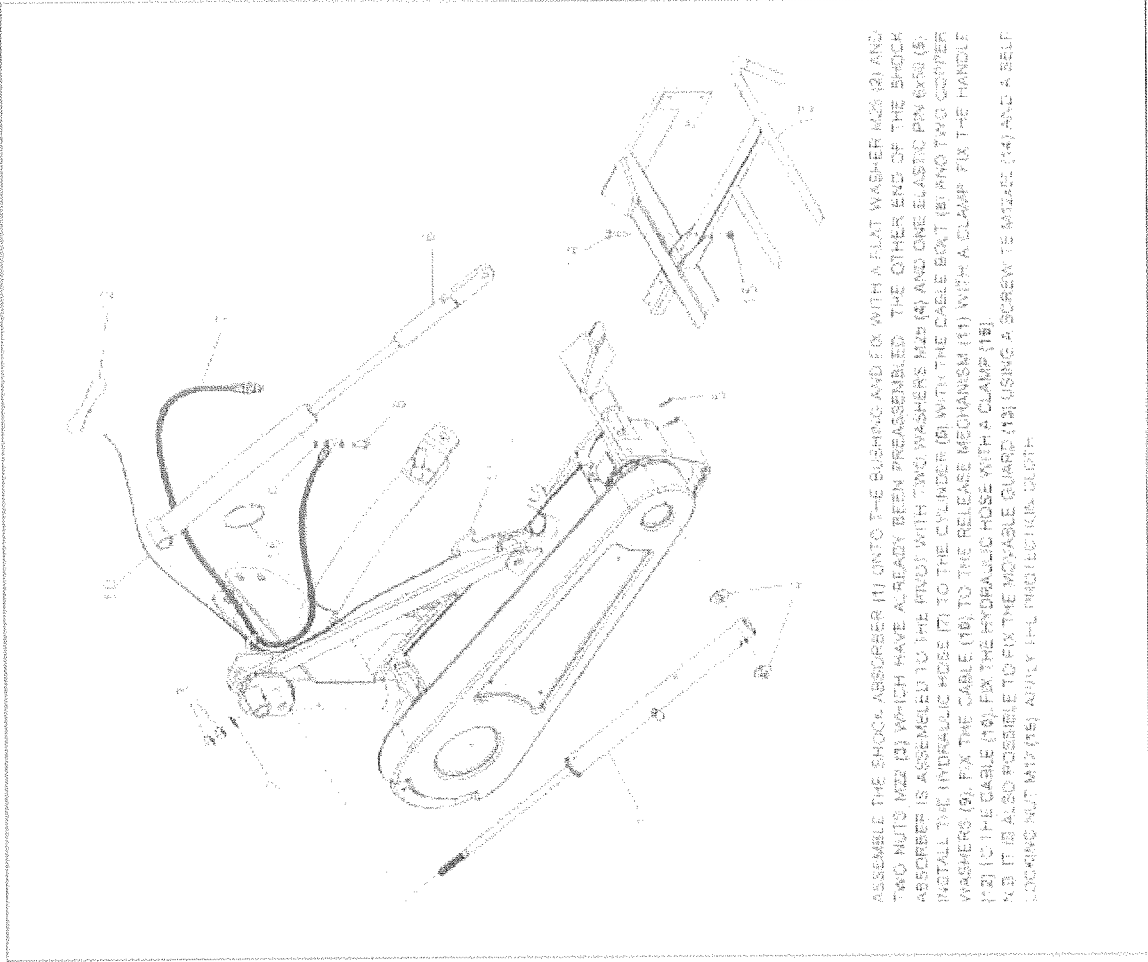
SLIDE THE BLUERING (2) ONTO THE PIVOT (11). INSERT THE BLADE (9) INTO THE CAP (11) AS PER DRAWING AND FIX WITH PIN (11). PLACING 2 SPACERS (3) BETWEEN THE BLADE AND SLIDE THE CY (1) ONTO THE PIN (11) AGAINST THE CAP. FIX ALL WITH A WASHER (16) AND AN ELASTIC PIN (18). ASSEMBLE THE CAP FOR PIVOT SHAFT (16) FIXING IT WITH A WASHER (16) AND 2 SCREWS (18). POSITION THE RELEASING MECHANISM (13) ON TO THE FORK WHICH IS WELDED ON THE STAND AND FIX IT WITH A 2 PER FOR PIVOT (14) AND 2 ELASTIC PINS (18). FIX THE OTHER PIN (13) THE RELEASE MECHANISM TO THE PIVOT WELDED ONTO THE CURVE AND FIX WITH A SPACER (16) AND AN ELASTIC PIN (18). SLIDE THE LIFTING PIN (18) INTO THE CURVED SEAT AND FIX WITH A WASHER (16) AND A LOCKER KEY (24). ALSO ASSEMBLING THE SAFETY CHAIN (19). ASSEMBLE THE OTHER LIFTING PIN (22) IN THE CURVED SEAT AND FIX IT WITH AN ELASTIC PIN (18). SLIDE THE THREE PINS (24) AS PER DRAWING AND FIX IT WITH A LOCKER PIN (19) (25) (26).



ASSEMBLE THE SUPPORT FRAME (2) TO THE TRANSMISSION GROUP (1) WITH THE CYLINDER ATTACHMENT (3) FIXING IT WITH SCREWS TE 12x6 (5) AND FLAT WASHERS M2 (4). FIX THE FRAME TO THE GUARD SUPPORTS WITH SCREWS TE W40x5 (6). FIX WASHERS M2 PLAIN SELF LOCKING NUT M12 (8). FIX THE CYLINDER (8) TO THE SUPPORT (2) WITH A PIN (10), A FLAT WASHER M75 (11) AND A PLAIN PIN 8x5 (12). ASSEMBLE THE FRONT CONVEYOR (9) TO THE CYLINDER SUPPORT (3) WITH THE SHAPED BLADE (28) FIXING IT WITH SCREWS TE30x1 M10x3 (13) AND SELF REMOVING NUTS M10 (12). FIX THE CONVEYOR TO THE SHOE (14) WITH A SCREW TE50x1 M12 (15) AND A SELF LOCKING NUT M12 (16). ASSEMBLE THE REAR CONVEYOR (16) TO THE SUPPORT FOR GUARDS WITH SCREWS TE W40x5 (6). FIX WASHERS M2 (4) AND SELF LOCKING NUTS M12 (16). ASSEMBLE THE BLADES (17) WITH SCREWS TE12x M10x3 (21) AND SELF LOCKING SCREWS M12 (22). INSTALL THE RIBBED BAND (23) AS PER DRAWING AND FIX WITH SCREWS TE50x1 M10x3 (24) AND SELF LOCKING NUTS M12 (25). ASSEMBLE THE MOVABLE GUARD (26) WITH SCREWS TE50x1 M12 (27) AND SELF LOCKING NUTS M12 (28).



ASSEMBLE THE CONVEYOR FLATES (1) AND (2) ON TO THE CUTTER BAR FIXING THEM WITH SCREWS W40x5 (3) ALREADY PREASSEMBLED ON TO THE CUTTER BAR. ASSEMBLE THE KNIVES (4) AND FIX AS PER DRAWING WITH WASHERS FOR KNIVES (5), SCREWS FOR KNIVES (7) AND FLANGED NUTS M12 (8). LOOSEN THE NUTS ALREADY ASSEMBLED ON THE CUTTER BAR AND FIX THE REAR SHOE (9). ASSEMBLE THE SUPPORTS FOR THE GUARDS (10) AND FIX THE SHOE WITH SCREWS M12x6 (11) AND SELF LOCKING NUTS M12 (12). N.B. ASSEMBLE THE LEFT HAND KNIVES (5) ON THE REAR CONVEYOR WHICH ROTATES ANTICLOCKWISE (AS PER DRAWING).



ASSEMBLE THE SHOCK ABSORBER (1) ONTO THE BUSHING AND FIX WITH A FLAT WASHER (2) AND TWO NUTS (3) WHICH HAVE ALREADY BEEN PREASSEMBLED. THE OTHER END OF THE SHOCK ABSORBER IS ASSEMBLED TO THE PINDI WITH TWO WASHERS (4) AND ONE ELASTIC PIN (5). INSTALL THE HYDRAULIC HOSE (7) TO THE CYLINDER (8) WITH THE CABLE BOLT (6) AND TWO COPPER WASHERS (9). FIX THE CABLE (12) TO THE RELEASE MECHANISM (11) WITH A CLAMP (13) AND TWO COPPER WASHERS (10). FIX THE HYDRAULIC HOSE WITH A CLAMP (14). IF IT IS ALSO POSSIBLE TO FIT THE MOVABLE GUARD (15) USING A SCREW TO MAKE (16) AND A SELF-LOCKING NUT (17) APPLY THE PROTECTIVE GLIDE.