

SAM Unique Entity ID: YS38HMZV8YF5

CAGE/NCAGE: 196T9



RAPID- DEPLOYABLES

DEPLOY ANYWHERE, ANYTIME.



RD Product Overview - Military

Rapid-Deployables removes the operational challenges faced when supporting military operations, disaster relief, and humanitarian response. These constraints include setup time, transport, weight, thermal performance, modularity and power and HVAC integration. Competing systems are not designed for the adaptability that modern military and disaster operations demand. Rapid-Deployables is a fully mobile, road-legal, rapidly deployable asset that brings functional infrastructure directly to the point of need, with no site preparation required.

Patented and Patents Pending
© 2026 Rapid Deployables. All rights reserved.



RAPID-DEPLOYABLES
DEPLOY ANYWHERE, ANYTIME.

Rapid-Deployables Product Highlights

Hybrid system, combines a soft-sided shelter with a hard-sided trailer

Deployment speed, deploys in under 15 minutes with a 2 person team

Repurposable platform, configurable for multiple operation requirements including triage, sleeping quarters, command and control, offices, IT/communications, and logistics support

Cargo-hauling capacity up to 8,600 lbs, enables transport of equipment and supplies

Shorter trailer length and innovative expandable design, allows for maneuverability in hard to reach areas without compromising on square footage

Cost savings, the ability to reconfigure and redeploy eliminates wasted duplicative costs (accommodations, man power deployment, etc.)

Applications include, military, natural disasters (wild fires, hurricanes, etc), humanitarian, mobile triage needs, training and emergency management

All-weather all-terrain operation, designed for expeditionary use in austere environments

Towable by pickup trucks and humvees, no specialized drivers, heavy equipment, or site infrastructure required

Rapid-response minicamp setup, allows core teams of 25 - 50 personnel to move with the operational environment providing cost effective support outside of large fixed base camps

Lightweight design, with minimal environmental impact

Financing, each trailer has a VIN providing the option for institutional or vehicle financing

[The Rapid-Deployables Product Video](#)

[\(Click Link Above to View Video\)](#)





RAPID-DEPLOYABLES
DEPLOY ANYWHERE, ANYTIME.

The Rapid-Deployables Value



SETUP TIME

Rapid Deployables transforms from a road-legal trailer into a fully operational, climate-controlled 430 sq. ft. space in under 15 minutes with just two operators and no tools, eliminating setup delays and enabling immediate mission readiness.



REPURPOSABLE

Rapid Deployables is a fully reconfigurable platform that can transition between missions and functions, allowing the same asset to serve as housing, command, medical, logistics, communications, or operational space as needs evolve.



THERMAL AND ENVIRONMENTAL PERFORMANCE

Rapid Deployables delivers a fully insulated weather-resistant structure that maintains a stable, sanitary interior environment across extreme climates, eliminating the vulnerabilities of soft-wall systems.



MODULARITY: SCALING INTO A BASE

Rapid Deployables enables units to seamlessly connect and scale from a single deployment into a fully integrated, multi-functional base camp using a standardized, reconfigurable platform.



POWER AND HVAC INTEGRATION

Rapid Deployables provides a fully integrated, plug-and-play power and HVAC ready platform with built in electrical systems, high capacity climate control, and fuel efficient insulation, eliminating the need for additional field equipment.



TRANSPORT / WEIGHT

Unlike traditional systems, Rapid Deployables is towable by a quarter or one ton pickup or Humvee with no specialized transport required, combining mobility and built-in cargo capacity to reach and operate in austere, hard-to-access environments.



RAPID-DEPLOYABLES
DEPLOY ANYWHERE, ANYTIME.

Rapid-Deployables

Five Assets Combined Into One Platform

Competing Options



Hard Sided Container



Soft Sided Tent



Enclosed Trailer



Inner Lining



Standalone HVAC

Rapid-Deployables



Hybrid Hard & Soft Sided Structure



Cargo Hauling Enclosed Trailer



Insulated Lining Included



Integrated HVAC



RAPID-DEPLOYABLES
DEPLOY ANYWHERE, ANYTIME.

Table of Contents

<i>Product Highlights.....</i>	<i>2</i>
<i>The Rapid-Deployables Value</i>	<i>3</i>
<i>Five Assets Combined Into One Platform.....</i>	<i>4</i>
<i>Problem and Solution.....</i>	<i>6</i>
<i>Conceptual Designs.....</i>	<i>7</i>
<i>Customizable Floor Plans.....</i>	<i>9</i>
<i>Mini Base Camps.....</i>	<i>11</i>
<i>The Rapid-Deployables Difference.....</i>	<i>12</i>
<i>Features and Benefits.....</i>	<i>15</i>
<i>3D Models.....</i>	<i>16</i>
<i>Technical Specifications.....</i>	<i>17</i>
<i>Brand Your Unit.....</i>	<i>20</i>
<i>Contact</i>	<i>21</i>



RAPID-DEPLOYABLES
DEPLOY ANYWHERE, ANYTIME

Rapid-Deployables Problem and Solution

Problem



Outdoor Canteen



12 Person Lengthy Setup



Costly External Separate A/C Unit



Labor and Equipment Intensive Setup



Deployed Troops Sleeping on Garage Floor

Solution



Upgraded Dining



Minimum 2 Person / 15 Minute Setup



Built-In Climate Control



Effortless Dual Purpose Mobilization



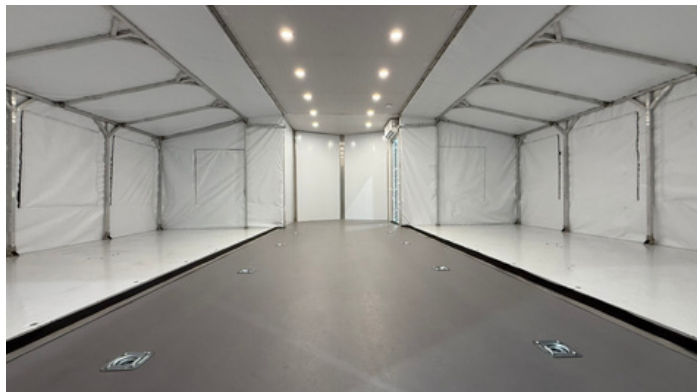
Comfortable Multi-Bed Sleeping Arrangements



RAPID-DEPLOYABLES
DEPLOY ANYWHERE, ANYTIME.

Conceptual Designs

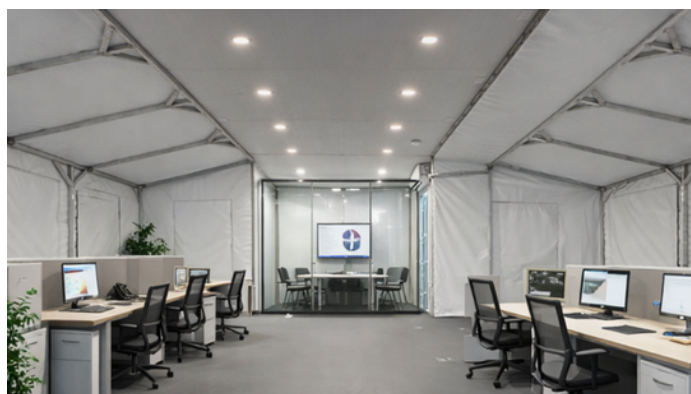
“Jaybird 430C”



Actual Empty Unit



Actual Empty Unit with Interior Lining



Office Space



Command and Communications Center



Mobile Triage Unit



Mobile Vaccination and Examination Unit



Sleeping Quarters



Sleeping Quarters



Canteen



Mobile Kitchen



Gym and Recreation

“The Buddy”



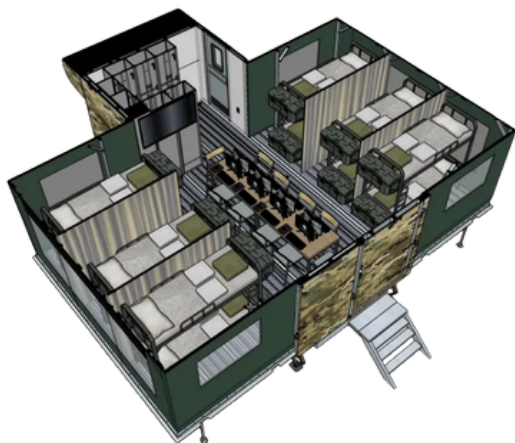
Actual Hard-Sided Enclosed Trailer
(no tent | customizable)



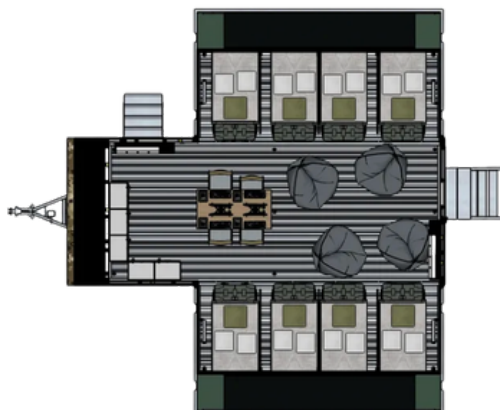


RAPID-DEPLOYABLES
DEPLOY ANYWHERE, ANYTIME.
.com

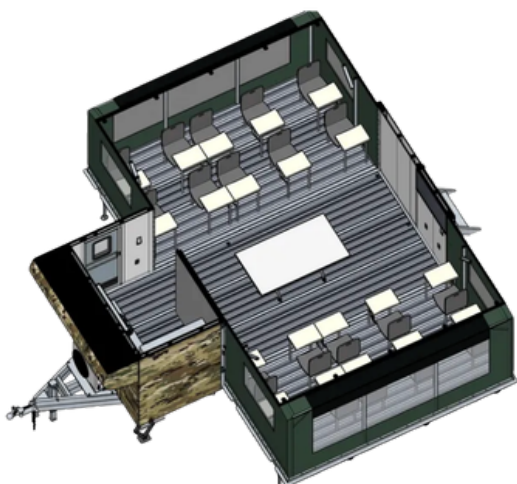
Customizable Floor Plans



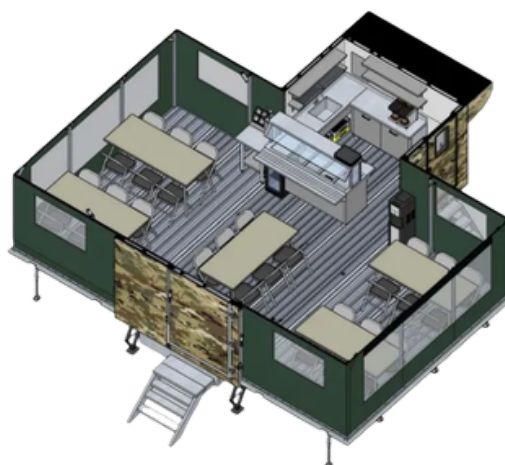
12 Sleeper



8 Sleeper



Mobile Command Center

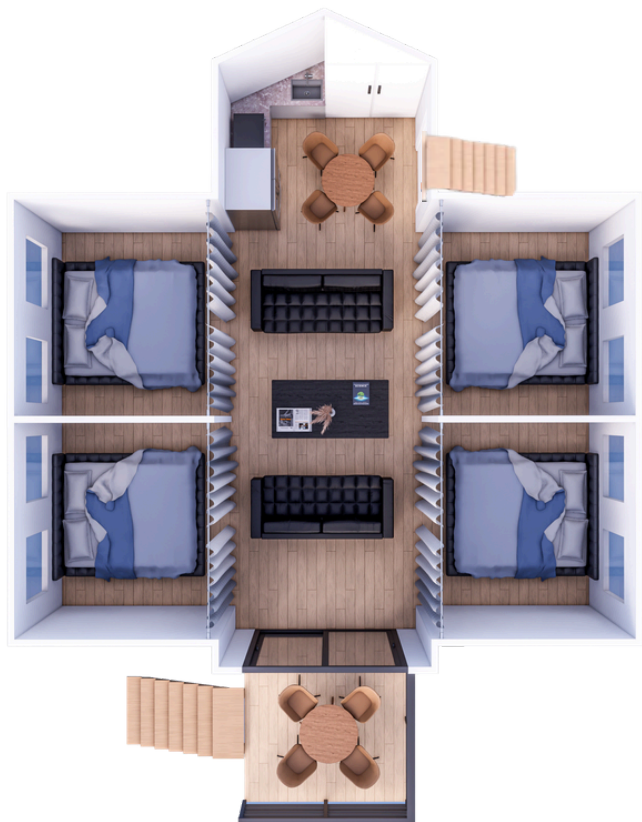


Mobile Canteen



RAPID-DEPLOYABLES
DEPLOY ANYWHERE, ANYTIME.

Customizable Floor Plans



12 Person Sleeper - 4 Bedroom, Small Kitchen, Removable Cabinets, Common Area with 2 Sleeper Sofas



16 Person Sleeper - 6 Bunks and 2 Sleeper Sofas



Family-friendly King and Bunk-Bed Configurations



Two King Bedrooms with Half Kitchen and Dining



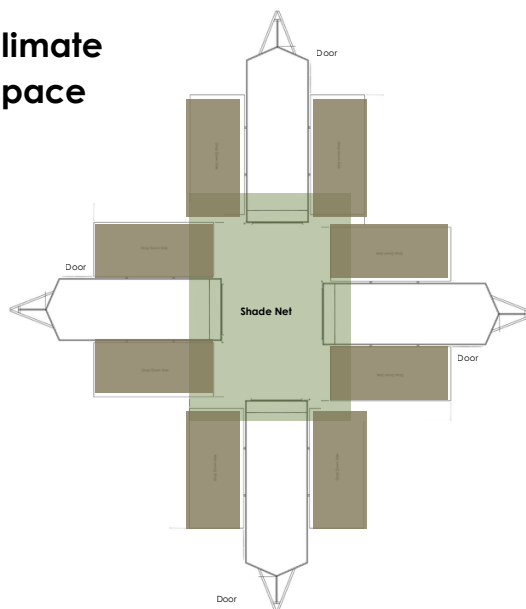
RAPID-DEPLOYABLES
DEPLOY ANYWHERE, ANYTIME.

Mini Base Camps

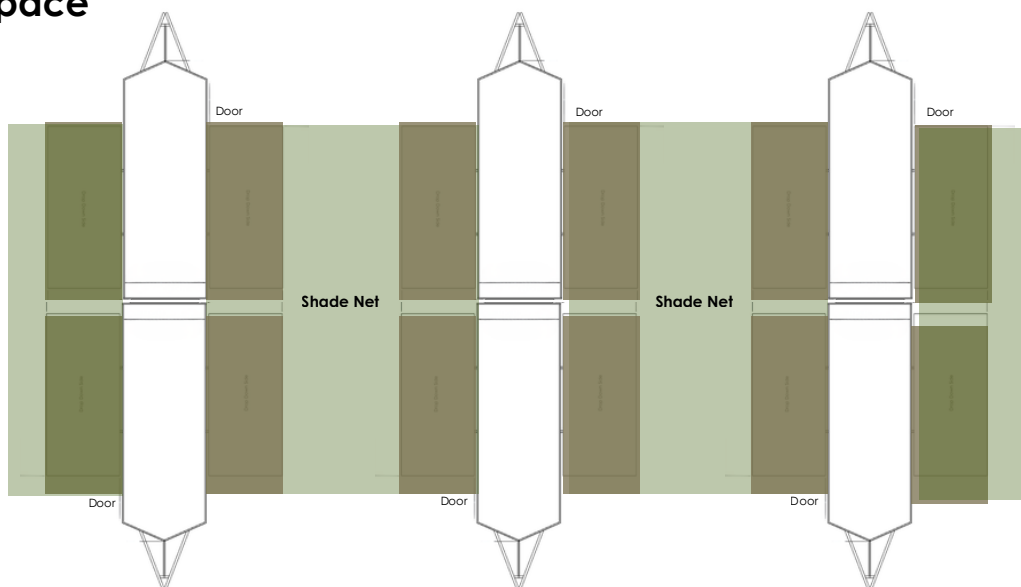
860 sq ft climate controlled space



1,720 sq ft climate controlled space



2,580 sq ft climate controlled space



Sample Renderings:





RAPID-DEPLOYABLES
DEPLOY ANYWHERE, ANYTIME.
COM

The Rapid-Deployables Difference

Expeditionary operations demand infrastructure that deploys at the speed of the mission. Rapid Deployables was engineered to eliminate the tradeoff between rapid deployment and a functional operational environment. Designed by the military for the military, the platform was developed in partnership with Major General Jay Hood, USA Army (Ret.), and guided by a Strategic Military Advisory Council including General Craig R. McKinley, USAF, Joint Chiefs of Staff (Ret.) and Major General Emmett Titshaw, USAF, Adjutant General of Florida National Guard (Ret.).

SETUP TIME

Problem: Conventional expeditionary shelter systems, including soft-wall modular systems, require teams of multiple personnel and lengthy time to erect. While these systems are proven and widely fielded, setup time remains a function of manpower and training proficiency. In time-sensitive SOF environments, every minute of setup is a minute of operational exposure and mission delay. Forward elements cannot afford to wait for infrastructure to catch up to the fight.

[Current Problematic Infrastructure](#)
(Click Link Above to View Video)

The Rapid Deployables Solution: Operational in Under 15 Minutes

- Two operators can deploy a fully enclosed, climate-controlled 430 sq. ft. operational space in under 15 minutes with no tools or specialized training required.
- The unit arrives pre-loaded with mission-configured equipment, eliminating further on-site assembly time and thus enabling immediate operational capability.
- Redeployment is equally rapid. The unit closes and returns to road-legal trailer configuration in under 15 minutes with no disassembly, no site restoration, and no residual footprint.

[The Rapid-Deployables Solution](#)
(Click Link Above to View Video)

TRANSPORT / WEIGHT

Problem: Strategic mobility are primary acquisition filters within SOCOM and the military at large. Soft-wall tent systems achieve favorable cube and weight profiles but sacrifice structural protection and habitability. Rigid containerized systems impose significant transport constraints, often requiring flatbed assets, cranes, and specialized handling equipment.

The Rapid Deployables Solution: Road-Legal, Pickup and Humvee-Towable, No Specialized Transport Required

- When closed, the unit operates as a standard road-legal enclosed trailer towable by any standard pickup truck or humvee, requiring no flatbed, no crane, and no CDL.
- The closed trailer configuration provides integral cargo capacity, enabling the unit to arrive on-site loaded with mission equipment, consolidating two logistics requirements into one asset.
- Ground mobility is unrestricted. Units can access forward positions, rural terrain, and austere environments that larger transport assets cannot reach.



RAPID-DEPLOYABLES
DEPLOY ANYWHERE, ANYTIME.

The Rapid-Deployables Difference Continued...

THERMAL AND ENVIRONMENTAL PERFORMANCE

Problem: Soft-wall shelter systems provide limited thermal performance in extreme environments and are vulnerable to wind, moisture, and debris. Hard-wall containerized systems are logistically burdensome. SOF operations span the full range of environmental conditions, from Arctic cold to desert heat to tropical humidity, and infrastructure that degrades in these environments directly degrades mission effectiveness, personnel readiness and morale.

The Rapid Deployables Solution: Fully Insulated with Regular or Extreme Weather Lining, All-Environment Enclosed Structure

- The unit is constructed with advanced composite panels that are fully insulated (wood free), waterproof, UV-resistant, and impact-resistant, providing a thermally stable interior environment for a wide range of operational conditions.
- The enclosed hard-wall structure eliminates the wind, moisture, and debris vulnerabilities inherent in soft-wall systems, maintaining interior integrity in sustained adverse weather.
- Panel construction is antimicrobial and easy to sanitize, meeting the hygiene standards required for triage, and high-occupancy configurations in austere environments.

MODULARITY: SCALING INTO A BASE

Problem: The military's, including SOCOM, acquisition programs increasingly require systems that can scale from single-unit forward positions into integrated base camp ecosystems. Most rapid-deploy shelter vendors offer modular expansion in theory, but interoperability between units, standardized connection systems, and integrated utility distribution remain inconsistent across product lines. The result is base camps assembled from incompatible components that increase logistics complexity and reduce operational coherence.

The Rapid Deployables Solution: Connectible, Reconfigurable Platform Architecture

- Individual units are designed to cluster into scalable operational configurations, from a single forward node to a multi-unit forward operating base or relief support village.
- Each unit within a cluster can be independently configured for a distinct function, including command and control, communications, triage triage, sleeping quarters, and canteen, enabling a full mission support ecosystem from a single platform family.
- The same physical asset is reconfigurable between missions, reducing the number of distinct systems a unit must procure, train on, maintain, and transport to support a full operational cycle.



RAPID-DEPLOYABLES
DEPLOY ANYWHERE, ANYTIME.

The Rapid-Deployables Difference Continued...

POWER AND HVAC INTEGRATION

Problem: Shelter-only assets force end users to purchase additional equipment to integrate power, HVAC, and communications in the field, increasing complexity, failure points, and personnel burden.

The Rapid Deployables Solution: Fully Integrated Power and HVAC-Ready Platform

- Each unit ships with a 50-amp electrical panel, exterior utility hook-up, LED lighting, and outlets, supporting immediate generator or grid connection.
- Up to three roof-mounted 15,000 BTU HVAC units deliver 45,000 BTU of total climate control capacity, while Climashield FR-SH insulation reduces heating and cooling fuel consumption by up to 55%.
- Integrated fire and CO2 monitors, drop-down ceiling, and a reinforced front mounting plate for generator or fuel tank attachment enable a fully self-contained life-support configuration.

SIGNATURE MANAGEMENT (IR / VISUAL)

Problem: Conventional shelter systems present an immediately identifiable military footprint both visually and thermally, with few designed from the ground up to accept signature reduction measures at the platform level.

The Rapid Deployables Solution: Low-Profile Platform with Integrated Signature Reduction

- When closed, the unit presents as a standard commercial trailer, providing camouflage-in-plain-sight during movement and staging with no additional concealment required.
- Optional factory-installed Infrared Reflective fabric on the roof and sides reduces the thermal signature against airborne and ground-based IR detection systems.
- Individual window blackout shades eliminate light signature during night operations, and the exterior surface accepts tactical paint schemes and camouflage wraps for theater-specific OPSEC requirements.



RAPID-DEPLOYABLES
DEPLOY ANYWHERE, ANYTIME.

Features and Benefits

15 Minute Setup: 2 to 3 people can transform the structure from a roadworthy trailer to a 430 sq ft functional space in under 15 minutes.

Climate Control: HVAC units permits temperature control for a variety of environmental applications. Fireplace is also available as an add-on feature.

Above the Elements: Interior floor is raised 2.5 feet above the ground, protecting its occupants from mud, water, dust, and snow.

Bathroom and Kitchen: Designed to incorporate optional bathroom and full or half kitchen.

Customization: Bespoke interior design allows customers to create any interior configuration to suit their specific needs.

Electrical: Fitted with an electrical panel, exterior hook up, lights, and receptacles.

Infrared Reflective Fabric: Optional add-on for Infrared Reflective roof and sides.

Cargo Transport: Can haul an additional 8,600 lbs of equipment and goods.

Manufacturer's Warranty, 1 Year Craftsmanship, 3 Year Structural, 7 Year Extended Warranty (optional)

Veteran Partnership: Designed and developed with Major General Jay Hood, USA Army (Ret.).

Strategic Military Advisory Council (SMAC) members: General Craig R. McKinley, USAF (Ret.), Major General Emmett Titshaw, USAF (Ret.) and Major General Jay Hood, USA Army (Ret.).

American Made: Proudly manufactured in Ohio and Tennessee, built to comply with multiple agency standards (Berry Amendment, RVIA, NFPA and other US standards)

ADA: Can be manufactured ADA compliant.

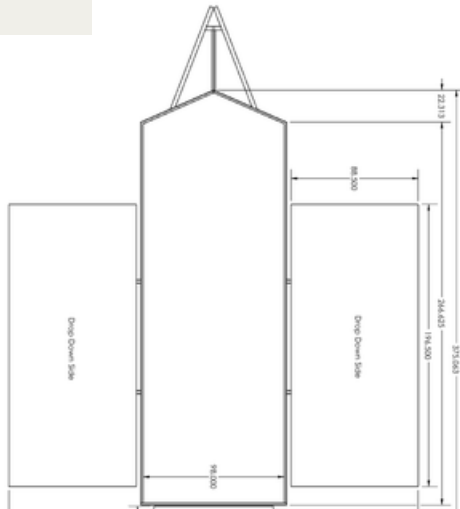


RAPID-DEPLOYABLES
DEPLOY ANYWHERE, ANYTIME.

Rapid-Deployables 3D Models

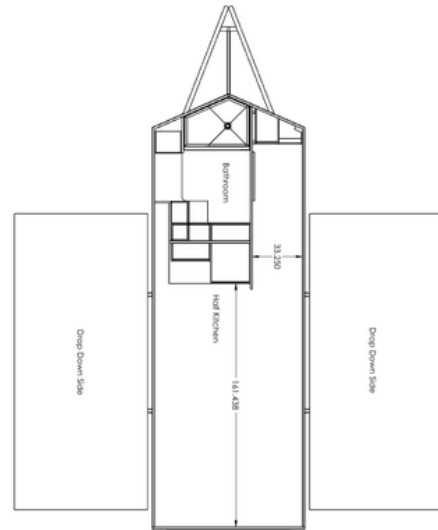
[Basic Unit](#)
[Click to View 3D](#)

[Bathroom and Full Kitchen](#)
[Click to View 3D](#)



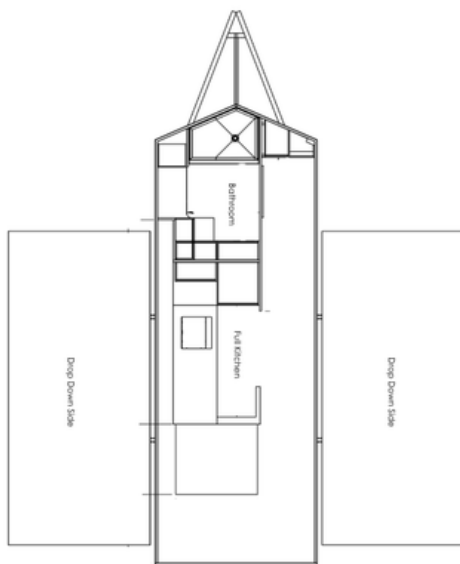
Basic Unit
[Click to View 3D](#)

Includes chassis, composite trailer, tent, three 15,000 BTU A/Cs, ceiling with LED lighting and electrical outlets, generator or electric utility hook-up, 50 AMP electrical system, closet with electrical panel, either swing out or drop down door, folding steps. **Optional add-ons:** Extreme Weather Insulation Liner and Infrared Top and Side Canopy.



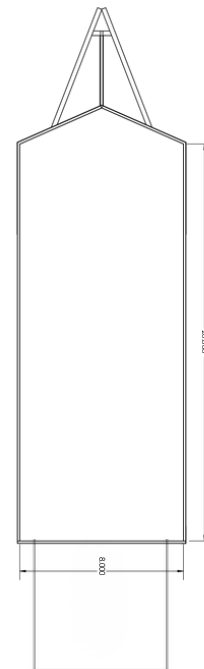
Bathroom and Half Kitchen

Includes chassis, composite trailer, tent, three 15,000 BTU A/Cs, ceiling with LED lighting and electrical outlets, generator or electric utility hook-up, 50 AMP electrical system, closet with electrical panel, sliding glass doors with drop down deck, folding steps, plumbing with tanks, full bathroom, half kitchen. **Optional add-ons:** Extreme Weather Insulation Liner and Infrared Top and Side Canopy.



Bathroom and Full Kitchen
[Click to View 3D](#)

Includes chassis, composite trailer, tent, three 15,000 BTU A/Cs, ceiling with LED lighting and electrical outlets, generator or electric utility hook-up, 50 AMP electrical system, closet with electrical panel, sliding glass doors with drop down deck, folding steps, plumbing with tanks, full bathroom, full kitchen. **Optional add-ons:** Extreme Weather Insulation Liner and Infrared Top and Side Canopy.



Enclosed Trailer (Without Drop Down Sides/Tent)

Includes chassis, composite trailer, three 15,000 BTU A/Cs, ceiling with LED lighting and electrical outlets, generator or electric utility hook-up, 50 AMP electrical system, closet with electrical panel, drop down door cargo, folding steps.



RAPID-DEPLOYABLES
DEPLOY ANYWHERE, ANYTIME.

Technical Specifications

Category	Specification	Details
Deployment	Manpower Required	2–3 personnel
	Time to Deploy	Under 15 minutes
Dimensions	Overall Length	28'8"
	Overall Width (Closed / Open)	8'7" / 23'6"
	Overall Height	11'6"
	Interior Height	7'11"
	Ground Clearance	2'5"
	Interior Space (Closed)	180 sq ft
	Interior Space (Open)	430 sq ft
Mobility & Load	Axles / Brakes	Dual 7,000-lb axles with brakes
	Gross Weight (Dry)	5,600 lbs
	Cargo Carrying Capacity	Up to 8,600 lbs
	Chassis	Aluminum (optional galvanized C-channel)
	Superstructure & Tent Frame	Aluminum
Enclosed Trailer (no tent)	Overall Length	22'0"
	Overall Width	8'0"
	Axles / Brakes	2 x 7,000 # Dexter Rubber Torsion Axle with 12' Electrical Brakes
	Electrical	Drop ceiling with outlets. 6 LED lights with switch. 50 AMP electric box



RAPID-DEPLOYABLES
DEPLOY ANYWHERE, ANYTIME.

Technical Specifications Continued...

1) Chassis & Mobility

- RVIA-manufactured trailer with Vehicle Identification Number (VIN)
- Chassis weight (with retractable arms): 1,300 lbs
- Towable by standard vehicles; no specialized drivers required
- Under-chassis hooks and interior D-shackles for securing cargo during transport
- Retractable stabilizer jacks for structural support when deployed
- Fold-down entry stairs for safe access
- Reinforced front mounting plate for generator or fuel tanks
- Adjustable tow hitch
- Integrated winch
- Cargo hauling capacity: up to 8,600 lbs

2) Composite Panels

- Roof, floor, sidewalls, and doors constructed from wood-free composite panels
- Fully insulated, smooth surfaces for easy sanitization
- 100% waterproof; resistant to rot, rust, mildew, insects, and corrosion
- Impact-resistant, UV- and weather-resistant
- Anti-microbial and anti-fungal
- No formaldehyde or carcinogens
- Covalent bond construction (heat & pressure)—no adhesives
- PFAS-free, CA Prop 65 compliant, FDA-compliant materials
- 100% recyclable
- Rear door configurable as swing-out or drop-down

3) Superstructure & Electrical

- Aluminum tent frame and superstructure
- 50-amp electrical panel
- Supports integrated: lighting, outlets, drop-down ceiling, fire & CO₂ monitors, HVAC
- Supports up to three roof-mounted HVAC units, each 15,000 BTU (heating & cooling)

4) Tent Structure and Fabric

- Berry Amendment-compliant manufacturer
- ISO 9001:2015 registered
- DCMA quality-audited
- Constructed with approved MIL-SPEC fabric
- Multiple fabric thickness options for all-season operation
- Window system includes:
 - Ventilated mesh screen
 - Clear PVC temperature-control layer
 - Individual blackout shades for privacy and light control



RAPID-DEPLOYABLES
DEPLOY ANYWHERE, ANYTIME.
.com

Technical Specifications Continued...

5) Environmental Performance

- Rain: Withstands 35 mph wind-driven rain at 1 in/hr for 3 hours
- Humidity: Operates in 0–100% relative humidity
- Wind: Sustained 65 mph for 30 minutes; gusts to 75 mph (10 sec)
- Snow: Supports 10 lbs/sq ft for 12 hours
- Sun/Heat: Withstands 18 months of direct sunlight; tolerates 160°F
- Cold: Tolerates -25°F to -60°F
- Extreme conditions: Unit can be fully closed in <15 minutes and rapidly redeployed

6) Interior Liner & Insulation

- Climashield FR-SH insulation, 185 g
- Thickness: 1.6 cm
- Flammability: ASTM D6413 compliant
- Basic weight: 9.5 oz/yd²
- Acoustic absorption: ASTM E1050 (630–6300 Hz), coefficient 0.49
- Up to 55% reduction in heating and cooling fuel consumption

7) Fire Ratings

- Composite panels certified to FMVSS 302
- Tent fabric meets or exceeds California State Fire Marshal and NFPA 701
- Manufactured in accordance with Federal Test Method 191



RAPID-DEPLOYABLES
.com
DEPLOY ANYWHERE, ANYTIME.

Brand Your Unit



Contact Us

DANNA SEGALL, PRESIDENT OF RAPID-DEPLOYABLES



Brings a proven track record in operational leadership from previous roles as Director of Sales at two high-growth startups. Offers strategic expertise in go-to-market execution, customer acquisition, and scaling innovative products, with a strong focus on streamlining operations, team management, and cross-functional execution in fast-paced environments.

(786) 252-4445

danna@rapid-deployables.com

STRATEGIC MILITARY ADVISORY COUNCIL

Rapid-Deployables is honored to be guided by a distinguished team of retired U.S. military leaders whose strategic insight shapes the development and deployment of our mobile shelter systems.

GENERAL CRAIG R. MCKINLEY, USAF (RET.)



Former Chief of the National Guard Bureau and member of the Joint Chiefs of Staff, brings unmatched expertise in interagency coordination and national defense logistics.

(904) 571-0323

cmckinley780@gmail.com

MAJOR GENERAL EMMETT TITSHAW, USAF (RET.)



Former Adjutant General of the Florida National Guard, offers deep operational insight into homeland security, disaster response, and emergency preparedness.

(904) 699-0035

emmett.titshaw125159@gmail.com

MAJOR GENERAL JAY HOOD, USA (RET.)



Former Commander of Joint Task Force Guantanamo, contributes critical experience in rapid deployment and field infrastructure under high-pressure conditions.

(813) 391-2677

hoodusa@gmail.com

Together, this Strategic Military Advisory Council ensures Rapid-Deployables remains aligned with mission-critical needs of the defense, emergency response, and humanitarian sectors.