

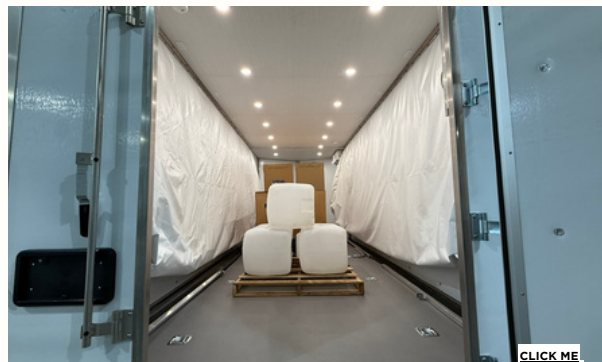


RAPID-DEPLOYABLES

# JAYBIRD 430C

*Deploy Anywhere, Anytime.*

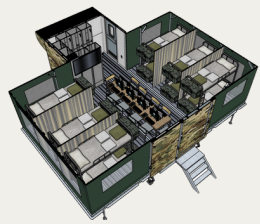
**Military - Emergency - Disaster Relief**



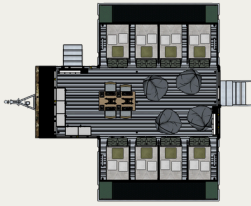
**ENCLOSED TRAILER TRANSFORMS  
FROM CARGO HAULING TO MULTIPURPOSE SHELTER IN 15 MINUTES**

[www.rapid-deployables.com](http://www.rapid-deployables.com)

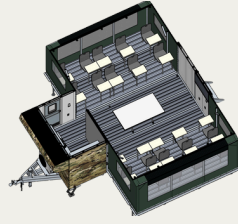




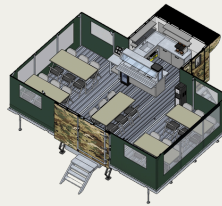
12 SLEEPER



8 SLEEPER



COMMAND



CANTEEN



EXPANDABLE  
TRUCK OPEN



EXPANDABLE  
TRUCK CLOSED

- Jaybird was designed and developed by Clive Metz in conjunction with Major General (US Army - Ret) Jay Hood.
- Protected by numerous issued patents and pending patent applications worldwide.
- Proudly manufactured in Ohio in joint collaboration with Amish Craftmanship.



## BENEFITS

- Instant Mobilization - Structure allows 3 people to completely transform the structure from trailer to tent in 15 minutes.
- Mobilization Savings - The instant setup provides measurable savings of time, costs and labor associated with the setup and removal of traditional tented camps.
- Weather elements - Interior floor is raised 3.5 feet off the ground, protecting its occupants from mud, water, dust, and snow.
- Customization - Interior design allows customers to create any interior configuration to suit their specific needs.
- Financing Options - VIN allows financial vehicle leasing options and programs.
- Manufacturer's Warranty - 1 Year Craftmanship, 3 Year Structural, 7 Year Extended Warranty (optional).
- American Made - Proudly manufactured in the USA under joint manufacturing alliances with Amish Craftmanship in Ohio.

## FEATURES

- Roof, floor, sidewalls and door panels are crafted with lightweight, high durability wood-free composite panels with a FMVSS302 fire rating certification and CA Prop 65 confirmation. Panels are fully insulated and allow for easy sanitization and wipe down.
- Window system contains (i) a mesh screen allowing inflow of fresh air, (ii) clear PVC cover for temperature control and (iii) individual blackout shades allowing for control of light when the tent is divided into separate sleeping quarters.
- Tent is attached by a quick release Keder system and can be changed in 30 minutes. Varying thickness of tent fabric can be selected to accommodate for differing climate.
- Tent fabric meets or surpasses the Flame Specification of California State Fire Marshall and NPA-701 and produced in accordance with Federal Test Method #191.
- Electrical panel, exterior hook up, lights, receptacles and accommodate climate control.
- HVAC units are an add-on feature and permits for a temperature controlled unit for a variety of environmental applications. Trailer also has an exterior vent to allow for a portable heat A/C Unit
- Structure is stabilized utilizing 12 retractable stabilizer jacks.
- Trailer is road worthy and is supplied with Vehicle Identification Number (VIN).
- Under chassis hooks and interior d-shackles secure the trailer and goods during transport.
- Retractable arms support the drop down base floor.
- Fold down stairs are designed for ease of entry.
- Can accommodate a bathroom.

## SPECIFICATIONS

Overall Length	28'8"
Overall Width	8'7"
Overall Height	11'6"
Interior Height	7'11"
Interior Floor Height	3'5"
Interior Cabin Closed (8x22) V Nose	23'6" x 8" (176sqft)
Interior Cabin Drop Down Sides	22'6" x 16'5" (372sqft)
Total Interior Sides Down Tent Open	430sqft
Axle-Brakes-Tires	2 x 7000lbs Axless Rubber Torsion - Electric Brakes (Upgradable to Axle Less)
Chassis	C Channel Galvanized (Upgradable to Aluminum)
Super Structure and Tent Frame	Aluminum
Gross Weight (Dry)	5,600lbs
Cargo Carrying Capacity	8,400lbs

For further information:

Danna Segall

+1(786) 252 - 4445

danna@rapid-deployables.com



# The Problem



Outdoor Canteen



12 Person Lengthy Setup



Costly External Separate A/C Unit



Labor and Equipment Intensive Setup



Deployed Troops Sleeping on Garage Floor

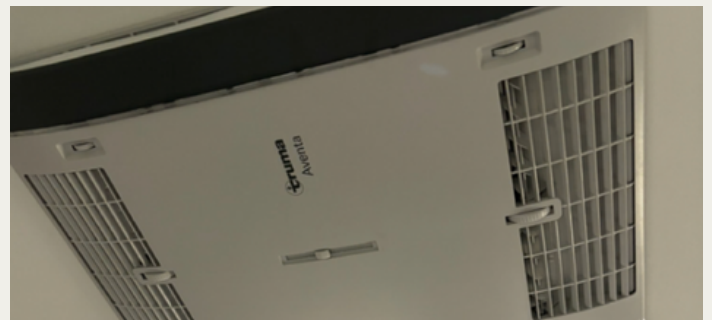
# Our Solution



Upgraded Canteen



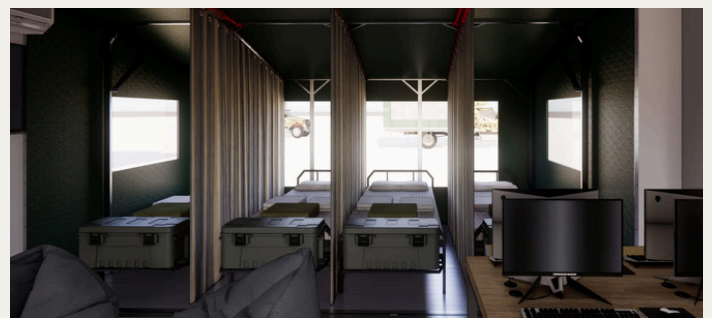
3 Person 15 Minute Setup



Built-In Climate Control



Effortless Dual Purpose Mobilization



Comfortable Multi-Bed Sleeping Arrangements

# Contact Us



## DANNA SEGALL, PRESIDENT OF RAPID DEPLOYABLES



Brings a proven track record in operational leadership from previous roles as Director of Sales at two high-growth startups. Offers strategic expertise in go-to-market execution, customer acquisition, and scaling innovative products, with a strong focus on streamlining operations, team management, and cross-functional execution in fast-paced environments.

📞 (786) 252-4445

✉️ [danna@rapid-deployables.com](mailto:danna@rapid-deployables.com)

## STRATEGIC MILITARY ADVISORY COUNCIL

Rapid Deployables is honored to be guided by a distinguished team of retired U.S. military leaders whose strategic insight shapes the development and deployment of our mobile shelter systems.

### GENERAL CRAIG R. MCKINLEY, USAF (RET.)



Former Chief of the National Guard Bureau and member of the Joint Chiefs of Staff, brings unmatched expertise in interagency coordination and national defense logistics.

📞 (904) 571-0323

✉️ [cmckinley780@gmail.com](mailto:cmckinley780@gmail.com)

### MAJOR GENERAL EMMETT TITSHAW, USAF (RET.)



Former Adjutant General of the Florida National Guard, offers deep operational insight into homeland security, disaster response, and emergency preparedness.

📞 (904) 699-0035

✉️ [emmett.titshaw125159@gmail.com](mailto:emmett.titshaw125159@gmail.com)

### MAJOR GENERAL JAY HOOD, USA (RET.)



Former Commander of Joint Task Force Guantanamo, contributes critical experience in rapid deployment and field infrastructure under high-pressure conditions.

📞 (813) 391-2677

✉️ [hoodusa@gmail.com](mailto:hoodusa@gmail.com)

Together, this Strategic Military Advisory Council ensures Rapid Deployables remains aligned with mission-critical needs of the defense, emergency response, and humanitarian sectors.