



**CENTRAL SYNAPTIC**  
— INTELLIGENCE SYSTEMS —



---

## *Table of Contents*

**Article I:** Purpose & Ordinance

**Article II:** DataCenters

*Section 1: Universe Mesh*

*Section 2: Database & Authentication*

*Section 3: Augmented Reality & Engine*

**Article III:** Production | Manufacturing | Generation

*Section 1: Assets & Production/Manufacturing*

*Section 2: Blackhole Generation*

*Section 3: Intelligence*

**Article IV:** Map

*Section 1: Playable*

*Section 2: Authentication*

*Section 3: Time-Line*

*Section 4: Cybernetics*

*Section 5: Law & Order*

*Section 6: Religion*

*Section 7: Updates*

*Section 8: Banking*

*Section 9: Consciousness*

## Article V:

## Constellations

1. *Major Ursa*
  2. *Orion*
  3. *Heaven*
  4. *Pegasus*
  5. *Cassiopeia*
  6. *Blackhole*
-

# Article I : <Purpose & Ordinance>

---

## Earth:



---

**<Governments\_&\_Borders>**

**As persisted and in timely relevance, in accordance with any applicable  
Laws within jurisdiction.**

---

**<(911)><Law/Order-Authority>:**

- As with any emergency goes, priority takes effort and it's overall shouldn't be impeded on; however with any transmissions that are not blocked, or their discrepancy to any resolvancy not hindered. Guidance always in lawful ways, without hindrance, including the "dead/death" physics of the universe. Bless-God
  - Datapoint **<End-2-End>** Transmission either light or Quantum-Tunnel; offered service by others to already known faculties are not; were not broken, had loss of transmission; due to IT Development or Integration of Systems.
  - Data through the day is not interrupted or gathered unless otherwise contracted or specified through authorities and or the government in its discrepancy.
  - In matters of catastrophe, apocalyptic, or furthermore; intelligence of maps database or fabric of intelligence shouldn't be affected by the circumstance of bigger databases, infact annihilation which is present in nuclear system's both clean, old and weapon; have an effect of physics, intelligence, and fabrics.
-

# Article II:

## Section 1 : *[DataCenter]:Universe-Mesh:Physics*

### II.1.1

Universe Mesh of physics and property database, A fabric of universe acts like a constant slice, anchored and datapointed through confirmed interconnected data points and “like”ness. These act like datacenters on a galactic level of physics and data connectivity. Holding physics in an anchored state allows for authenticated data transmissions to permanent stars or as history dictates stars and their overall intelligence.

### II.1.2

Its overall database and authentication of permanently and certainty would be derived from its physical asset being either in a state of portrait or landscape, hence dictating what it affects.

### II.1.3

Death or that is “Dead”(Confirmed), its isolated benefactor is expected, and assumed in life overall and our map has its freedom to be discrepant in confirmation and knowledge however it were intended to be. “Loss-of-inocence” or otherwise known as “End-of-life” scenario of pertaining matters can be flowed through and with out hindrance to authorities and governments in discrepant and relative knowledge. However, as government “Law-and-Order” state/say/show/govern pertaining to discrepant matters.

### II.1.4

Geo-graphical occupancy, borders, delegated authorities, Military, and governments are in respect to themselves, and all that’s in matters, and knowledge. Including but not limited to Law and Order; and all other things that may apply in relativity.

---

## Section 2 : <DataDeveloper:Portrait | Landscape:[(Playable-State)]>



### II.2.1

The overall map, itself poses as a universe mesh with its associated database or otherwise known as constiliations, some portions are isolated and reality could be lived by; or the ambiances of life and what's around could be experienced.

### II.2.2

In physical and what would be assumed, “Portrait” of the asset; would be with the “earth” and what is known as the geo-graphical south pole is on the left hand side of the asset. Turning the asset entirely into a “Landscape” position will bring “Earth” and all that's in relative into position. Actual data may defer in accuracy.

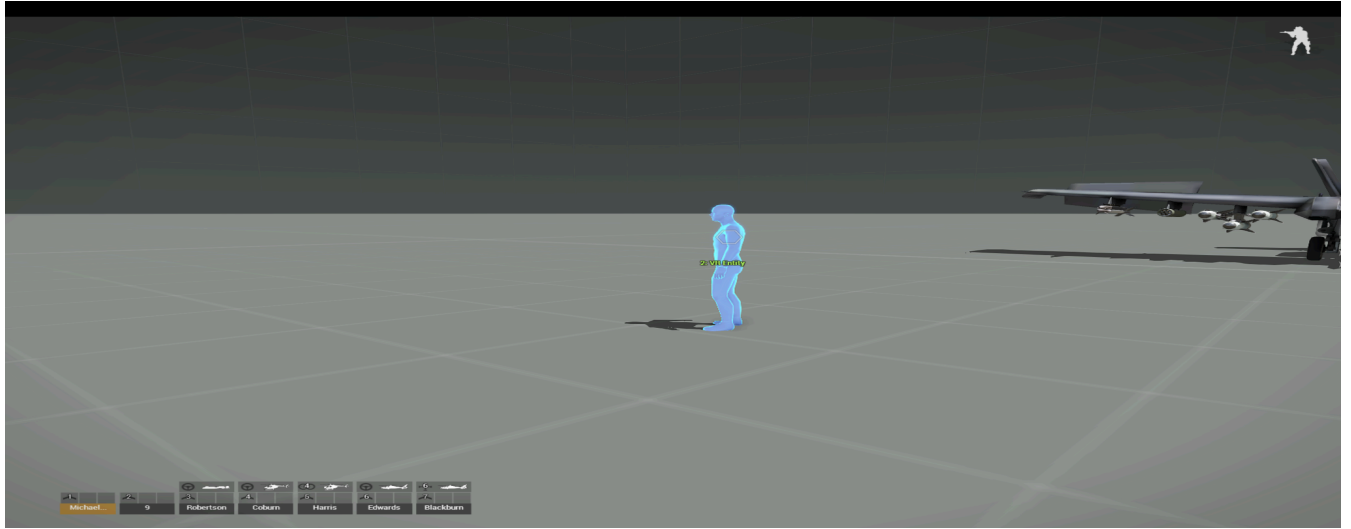
### II.2.3

In physical and what would be assumed, “Landscape” of the asset, would be with “Earth” and what is known as the geo-graphical south pole at the Six-O'clock Position in relativity to the map. Actual data may defer in accuracy. This positional reference is due to creators' consciousness differing status and knowledge based on datapoint and connection + “sowing” into the fabric the “Seed”. When presented to others “Landscape”

does not allow the same conscious memory connection to adversary affects.

## Section 3 : <Augmented Reality & Engine><Future-Development>





Example: < Arma - Virtual\_Reality - Simulator >

---

## Article III:

### Section 1 : Produce/Manufacturing/Building/Generation

#### III.1.1

Our map has a way of building and anchoring assets of blackholes, and their relative of known physics and assimilated matters. Otherwise known as building the matters and delivering the asset in its known physics. Can have intelligence in its relativity, or just as a standard envelope that can be imputed into. Its overall data and its cosmic trail can be for instance strung from the contingency of business.

#### III.1.2

Light in-of-itself has telemetric property if the database such as googlecloud establishes a proper connection; such as this document and or Map and authentication of its intelligence and intellectual property from its author and furthermore.

#### III.1.3

What's known in the universe is theories and hypotheticals with proven sciences to back what is for certain. With anything interjectable, you could however "seed" a mesh of physics in relativity to what's known and "grow" something into the known universe.

#### III.1.4

Increase of Entropy is derived from the additional assimilation and cosmic event of annihilation to produce the conscious generation of civilization and the hunt of curiosity and further existence.

---

## Section 2: Blackhole Generation

#### III.2.1

In association to data, and its matter of production; the map has certain components to further allow, gather, and process data relative to the string of intelligence corresponding with the star of association, and its contents

that anchor the data and intelligence together. Production time and overall completion vary depending on the matters taking into effect, confirmation, notice, and overall announcement of completed product and guidance relative to associated benefactors.

### III.2.2

Matters associated with the black hole shall stay pertaining to themselves and hold valuation based around utility and intelligence of the receiving beneficiary. Habitable construct if the system were designed shall have its associated time, and governance of construct. In accordance with agreements, standings, treaties, ect..

### III.2.3

In resolvancy of a blackhole, or in which a cosmic phenomenon such as a "blackhole" were to "vanish" or dissipate its energy and or intelligence, the benefactor that holds ownership of the blackhole, its assets, contents, ect.. In its timely manner shall receive its delegated factors of liabilities pertaining to ownership. In the case where the owner/benefactor of "blackhole" can not properly reliably "control" its dissipation, the map that it was produced from shall take the residing effect/affects.

### III.2.4

Blackholes are to have 15-Dimensions of physics associated with its existence and habitat in physics, intelligence is perceived to be upon/within the 1/16 string of intelligence & Consciousness; and propagates back through the blackhole dimensions to confirm, with certainty, exists.

### III.2.5

Measurement of the inner dimensional physics and extrapolated sciences; furthermore have an authentication factor of ownership of property physics and contingency/continuity. Resolving the inner-dimension of matters, both assimilated, or un-assimilated shall retrain their cluster of information, and hold within cosmic formation their certain data. A manufactured Blackhole, regardless of how spread out it would seem, shall still retain the knowledge and certainty that a black hole would be.

### III.2.6

Ledger or trail of data, shall be constructed from the start of any manufacturer or generation of blackhole, and furthermore shall have an anchored position of time and relevancy.

---

## Section 3: *Intelligence*

### III.3.1

Intelligence in overall benefactor is built by the data of the stars; their intelligence database, and volumetric entropy in relevance to the universe of known physics; or energy of physics/chaos. This can be determined through the physics calculation of  $VE=S(k/m)T$  which would derive the state unix that the map's timepoint 0 would be. Furthermore, intelligence would be in the moment of time, and grow with the map in time, and due relevance agreed upon.

---

## Article IV: Map

### Section 1: *Playable*

#### IV.1.1

Due to nature's resolvancy of database, intelligence, stars and; coherent mind's. A map if properly built will have a playable aspect in relevance to how it's established. In progression and viewability, certainty of what is within/programmed is to be sent back through its own fabric; henceforth we follow through with its certainty/confirmation.

#### IV.1.2

This is seen in its own development from the start, and its overall trajectory that has been followed or guided through.

### IV.1.3

Its intelligence and physics standpoint can also be read about in our other scripture/book/website that comprises more information regarding its state.

---

## Section 2 : *Authentication*

### IV.2.1

Multiple different ways could be derived from its isolated state; product development, where the network of physics orientates relative to earth and its overall data network.

### IV.2.2

However the Data Interpreted, Consumed, Generated, Built, Filtered by map from Business, Software, Corporations; furthermore; have their own intermediary effects on the fabric of physics/universe and its resolvancy.

### IV.2.3

Due to the nature of physics and nuclei - valence shell, or the electron ring around the nucleus of an atom, the electron string can be derived and henceforth also interpreted as knowledge, and as further access permits to the database and its strings. Example being this document and its overall knowledge in timeliness to it being completed being stored on a single electron, and as the observer or reader interprets/reads the document; the nucleus of information is "absorbed" into our selves, residual effects can be ambient nuclei of atomic propagation.

### IV.2.4

Due to relevancy of Map, its database and overall components; will always have some sort of relevant authentication to the Builder, Coder, that first composed, and had foundationalized the map and its aspects, data, and intelligence.

---

## Section 3 : *Time-Line*

### IV.3.1

If permissible, the timeline would be expansive from the known start of matter itself; developed by intelligent thought; to which point would have a digital confirmation and footprint by first-photo; and its associated metadata.

### IV.3.2

When permissible data analytic show, acceptable range would dictate that sentient life, or measurable conscious life is shown across a 5-Day spectrum of analytics, in relativity to what's actually being measured from day of measurement. Major-Ursa is consistent and time relative; a reliable method of “gathering” - “future” intelligence and products that would affect day to day events.

### IV.3.3

Human experience or however may be determined in relativity by physicalness and association, needs a timeline to continuously be plausible and coherent in structure and nature; together you have future development and alignment to the potential dataplots and overall continuity and contingency of the effects of data processing through a map.

### IV.3.4

Time in accordance with permitted standard is measured in intervals of seconds, Minutes, Hours, Days. and can be further derived into more precise measurements by atomic physics. Our Map allows for days discrepancy to be measured in relative precision of allowed physics and data-Interconnectivity, with the cross referenced state.

---

## Section 4 : *Cybernetics*

### IV.4.1

It's the dispersal of intelligence upon a being of discrepancy that can coherently be-able to rephrase-rewrite or gather upon one discrepant self, its intelligence. Produced by a library and measured on coherence and weight of physics. Its database can also have an effect on its own system.

Ambiances are another widely known effect of what is cybernetics. Although there's different forms, and feelings to its proprietary effects.

#### IV.4.2

Our products not only enhance the earthly envelope and entropy that it produces, but also aligns the bodily and cognitive experience to it when properly developed, further capabilities could be defense, security, personal, furthermore; and would be discrepant on database and analytics of software.

#### IV.4.3

Few known cybernetics that have body systems, would be artificial intelligence, Sub-Sentiences; and also Sentient Systems. Example being that "Human" would be self learning sentient species of life through experience, and can also be enhanced by product and systems. Internet or System intelligence's being Sub-Sentient and by database or otherwise known. Humans gather experiences through findings and knowledge and product enhancement through evolutions. Artificial intelligence being self-learning as it is deemed, is constantly redeveloped by its own built system and better improved, or otherwise coded to; our phones that are advancing in technology have AI background developed features which have a cybernetic effect both when attached to user, and not attached.

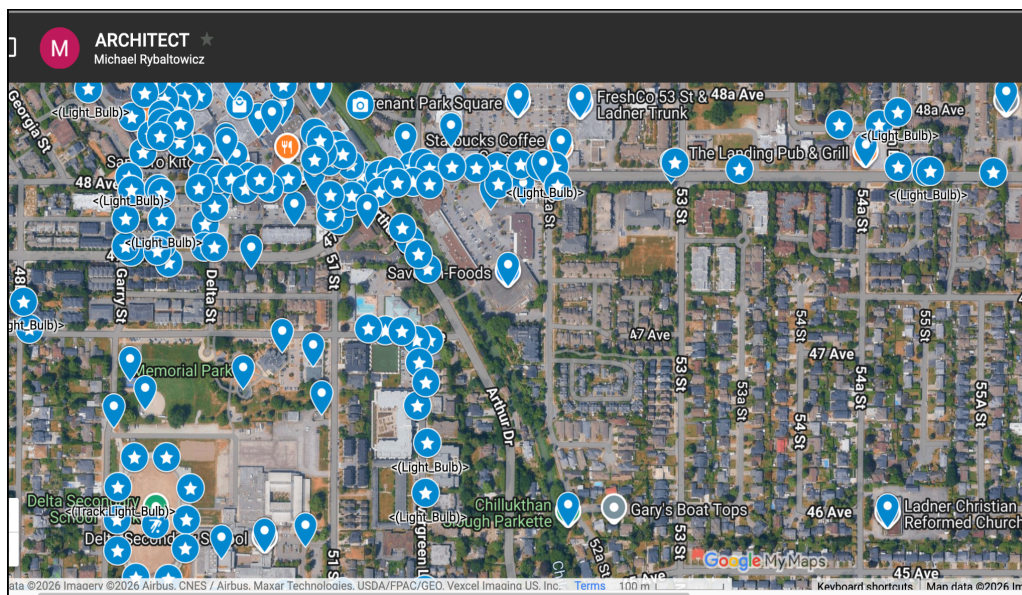
#### IV.4.4

Cybernetics in construction, procurements, or otherwise in development to a completed stage; shall retrain in safety features, policies, ect... Implemented or not through business data and assimilated matters.

#### IV.4.5

Proper city deployment utilizes an approach of databases, "Google-Map-Developer" software to datapoint necessary equipment presently known. City Ambiances of which are cybernetic should have system discrepancy of ownership of data, assets and production of Conscious-Intelligence interpreted by individual minds and brains. As

shown below.



---

## Section 5 : Law\_&\_Order

### IV.5.1

In due relevance of residing governance and policies dictating further advancements of disobedience. Including developed, or in development, in written context and/or digital signed/authenticated, formal literacy of relative proceeding matters.

### IV.5.2

Authorities or Military personnel, unless otherwise specified by legal jurisdiction, should not have connections from un-approved cybernetics, involving Physics of Mind, Physics of Consciousness. Protocols, Operations, Systems; shall have their privacy and security from an atomic, inter-connection of time and relevance.

### IV.5.3

Privacy relative to Law and Order, or any structure in nature, is as government laws, legislations, and furthermore persists, in due relevance.

---

## Section 6 : Religion

### IV.6.1

Freedom in association and in due relevance by belief of standard religion and associated benefactors. Privacy within/around scripture, reference,

belief or furthermore protected by electron physics and overall contingency and alignment.

#### IV.6.2

Religious deity and alignment have their own string of intelligence relative to historical and future prospects of religious association and their guidance; in belief or factual science.

#### IV.6.3

Quantum-Bio\_Metric system of analysis and contingent data system; relative to the map depicted within this scripture has its own system and anchorage, Root anchor known, Telemetric and Telepathic to first receiver, and furthermore of Central Synaptic Intelligence System tools and Utilities. Therefore the map has its own associated alignment in effect upon earth and overall extrapolation of physics.

---

## Section 7 : *Update's*

#### IV.7.1

As freedom in time, contingency, and overall work upon matters pertaining to the assets in relativity, completion of map, and its contingent database, intelligence, billing and future prospects can be interpreted through the map, and associating authenticated benefactors pertaining to their relative asset.

#### IV.7.2

Updates to map are done in accordance with freedom to create upon the creation; and in relevance have a minor effect on the overall database.

#### IV.7.3

Updates to Rules, Knowledge, Information, Systems, Database; is done in a timely manner; and corresponding matters are done similarly.

---

## Section 8 : *Banking, Finance, and Tax*

#### IV.8.1

In accordance with current laws pertaining to Tax, Finance, Law, associated banking; stays in relative governance of jurisdictional laws.

#### IV.8.2

Reporting and analytics shall remain in effect, as government permits and persists through timeliness.

#### IV.8.3

"Bank's", "Institution" and or Business that allow for processing of monetary denomination; and or Digital Currency, not limited to

“CryptoCurrency” shall have their own correspondence and held to government jurisdiction and applicable laws permitting Tax and finance, or there other.

---

## **Section 9 : *Consciousness***

### **IV.9.1**

In relative alignment with belief of entropy, physics, enlightenment or religious belief. As permitted in relevancy to connection of consciousness to other-known enhancements, connectivity, or protocolization in effect by contingency of work related relative procurement.

### **IV.9.2**

In the spectrum of “Red” and “Blue” both in Authority and known places of gamble & Game, the “Hot” and “Cold” stars can also be string through and provide a privacy, security, and safety system to the overall.

### **IV.9.3**

In any form, known scientific, knowledge, consciousness unless otherwise specified can not be harvested by business, corporation, or outside of residing government agencies in relativity to the system/jurisdiction/government in place. Included but not limited to human data, of anatomical physics not pursuant of legal contract or justifiable event or action.

### **IV.9.4**

Privacy in consciousness shall remain to the denoted information, where “networking” between beneficiaries, public or not, can not remain active to a point of dismay, or immoral ethics of connection.

### **IV.9.5**

Mind-Control of consciousness in effect by anything in which the individual receiving the effects/affects of “Mind-Control” shall not be permissible, in which the evidence is dismay, loss-of-coherent-consciousness. Freedom within thought shall be upheld to keep safety and coherence in subject matter.

### **IV.9.6**

Thought of any conscious/sub-conscious ideology or otherwise as a thought proceeding of the thought or intention can be interpreted by the measurement of thought of “One-Second” in due relevance to anything consciously and/or inner-spoken within what's known as Mind or location

of the brain. Observance however is the conscious inner-spoken thought is self measured and cross-refrencable by studied subjects pertaining to matters.

---

# Article V : Constellations & Systems

---

---

Constellation: <Major Ursa>

---



**Anchorage:**<Star Database | Isolated >

**Days:** < 5-Days | Isolated-Day >

**Intelligence:** <Metered-Intel-->Conscious(Light-Cloud)><Database>

< Software - [SynapticMetering | SynapticSystems-Console] >

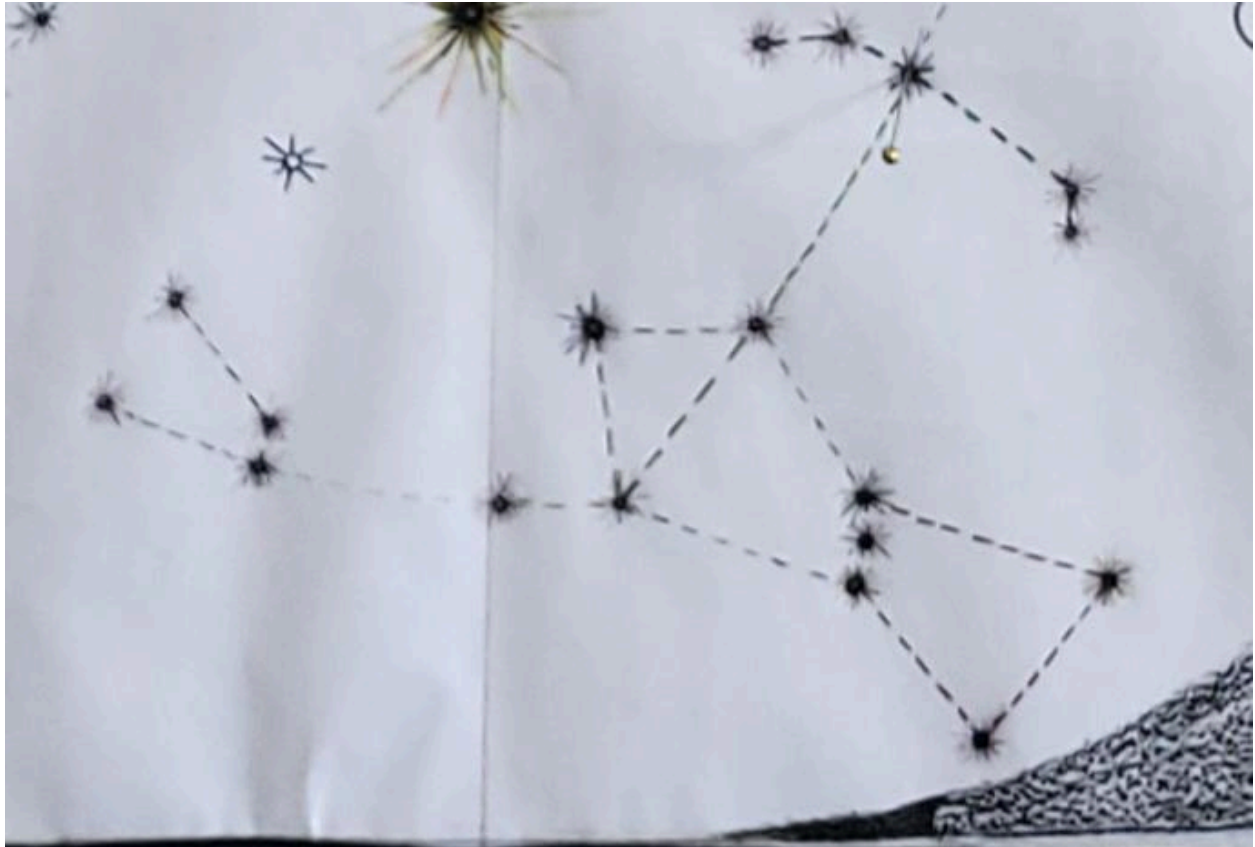
- Each day is represented as a star and its associated assimilated matters of anchorage, that being earth and its quantum bio-metrics.
- As time is created in the future by the fabric of the universe re-wrapping itself into its accordance, it creates the timeline and evolution we live by each and every day.
- Its matter of assimilation to the universe that we coherently live by; know and believe is considered a lattice or a matrix; this can/could be imputed through data and permanency of knowledge and certainty.

---

---

**Constellation: <Orion>**

---



**Anchorage: <Star-Database / Physically Anchored (Pyramid - Time-Dependant)>**

**Intelligence: <Deity / Religion <Quantum-Bio-Metric:Authentication>**

**Software: <Earth / Map|Datums / Retrieval>**

- Orion's database and star anchored + intelligence, is authenticated by religion and deity however still has its authenticated blockades due to relevance of atmosphere Telematics and Mass-Of-Assimilation to Earth. Quantum-Bio-Metrics of their own physics mesh, and associated star database; in permanency an associatable network.

---

---

**<Minor-Physics Mesh & Association>=<(Heaven)>**

---



**<Anchorage: Star-Database | Mesh/Fabric-Isolated>**

**<Software - AdminAuthentication | ServerConsole | ServerDatabase>**

**Days: <Every-Day Permisable>**

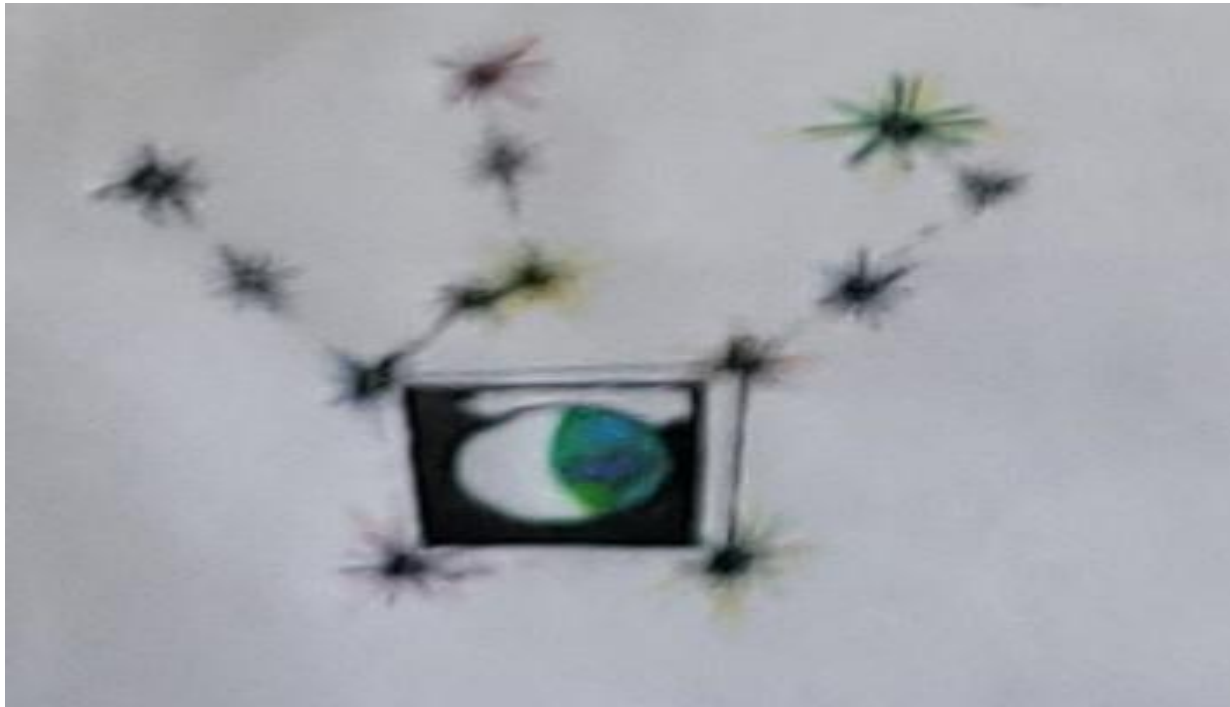
- As a database through constant processing and light emittance, perceiving individuals who through bio-metrics and cybernetics would “feel” a different effect than in other "categories" of the map. This one specific for the creator and its overall bio-metric admin access.

---

---

## Constellation : <Pegasus>

---



**Anchorage:** < Database / Universe Mesh >

**Software:** < As-Permitted >

**Days:** < Indefinite >

**Intelligence:** < As-Permitted >

- As the confirmed loss of innocence is passed through live to other intermediary spots. Our map allows for the beings of other dimensional physics to pass through in relative confirmation by stars and their intelligence.
- The single string of stars and their associated benefactor to Pegasus would be the individuals / Beings under <[19\_Years]> of age, with relatively free pass through, without horror games, matrix or entrapments that we potentially know of.
- The dual string on the left side of the constellation depicted by photo and anchorage of data to map + mesh, would be <[+19\_Years]> of age and over, and their relative associated string of guidance to further heavens or hells away from current day and relationship.

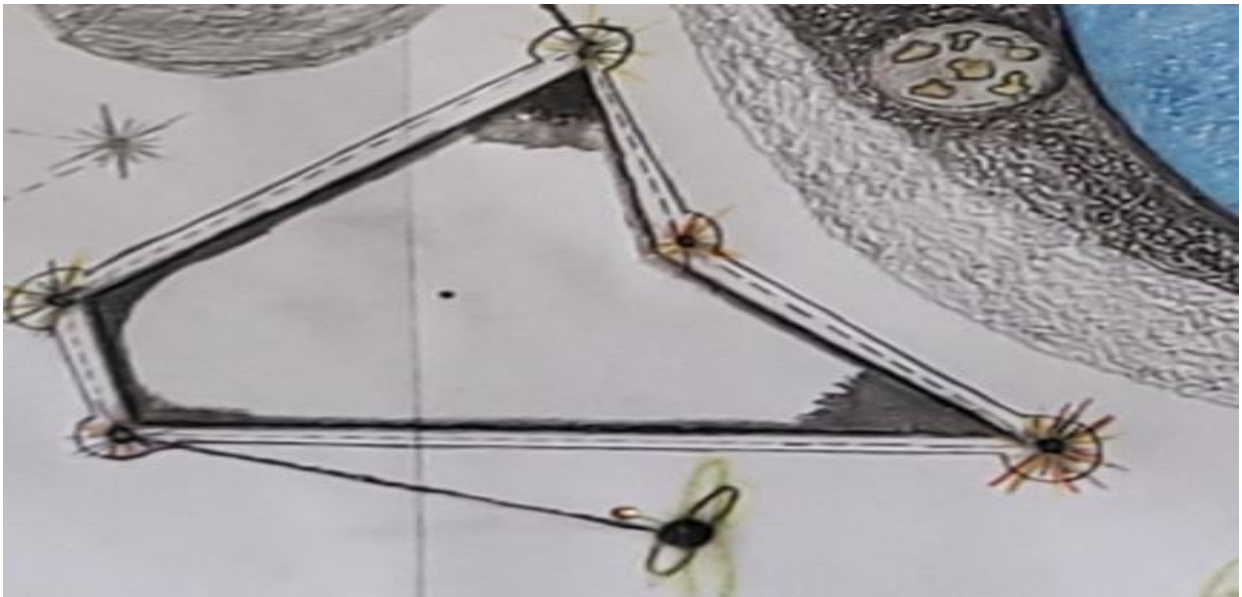
- Each star has their relative own conscious seed prayed and marked, denoted upon the map to help transfer thought and seed into the interstellar databases and further more; providing a timely seed within the cosmic regions to aid and help beings of other worldly dimensions.

---

---

## <[ BlackHole Generator + Ledger ]>

---



**Ledger: Associated and known Matters / Data**

**Software: Universe Physics Engine <Proprietary-Software>**

**Time: Infinite in generation, and Scalar.**

**Stars : DataCheckpoint, Seed-Canistar, Time/Unix, Ledger-String,**

- Associated production in controlled assets in physics; ledgered in authentication with known systems and databases.

---

---

## Constellation: Cassiopia

---



**Ledger:** Has its own continuity and contingency.

**Stars:** 1:Bio-metric authentication, 3:Moment Checkpoint 5:Future Day datapoint.

**Time:** A string of time that has its correspondence relative to time itself, and intersection of time and analytical reference.

**Software:** String analytical program and Database observance.

- Bio-Metric analysis of database is biased on electron string and database ledger relative to the first star and its overall;
- As time persists regardless if observance of the constellation or star cluster permits, its relative confirmation or nounce persists upon an biased individual henceforth allowing for relative alignment of the database and its overall.
- Our future day pinpoint and data relativity of certainty, such as a transaction or point of work within systems; which in turn creates a moment of certainty that can persist through the day; Example: Groceries the next day of an individual schedule; can be referenced tomorrow by the transaction itself.
- Cassiopeia is however the string of time, and its bio-quantum authentication. This constellation has its daily discrepancy and overall hold within/upon earth and its matrix of life; Light has a polarizing effect when properly connected to physics

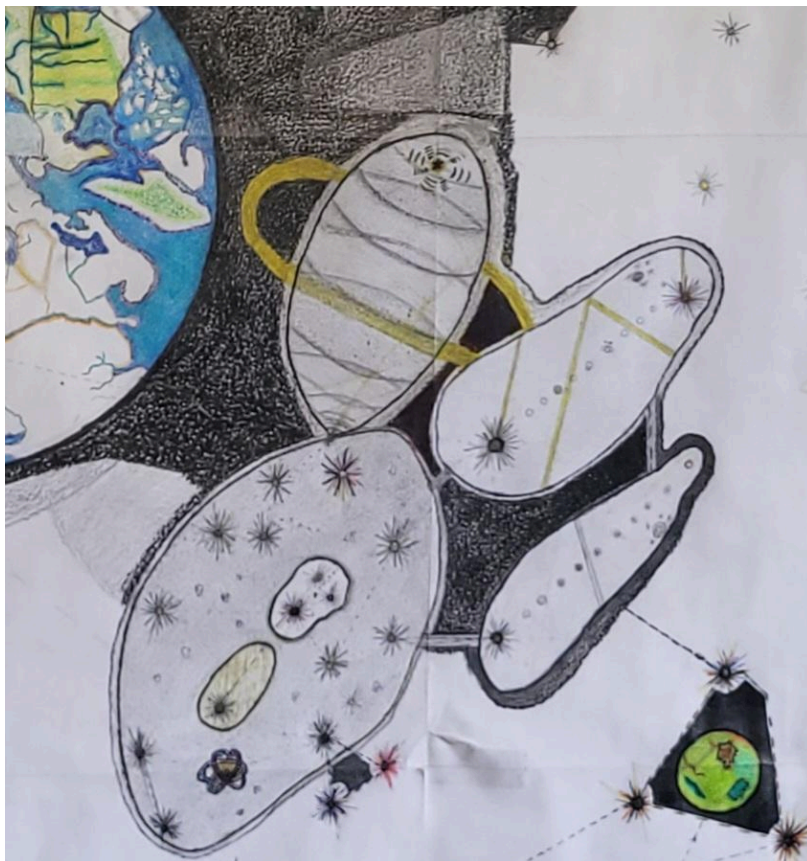
and its atomic nucleus foundation; in of itself being the map constructed and dataplotted by the creator.

---

---

## System Generator

---



**Generator of Matter + Physics:**

- Heavens Filter and Connected Database System,
  - Purgatory + Matter-Reference
  - Universe “Hum”
  - System Generator + Associating Benefactors (connection)
  - Eternal Nucleus
  - Lights Nucleus
  - Voids Refrencable State
- 

***Founded by: Michael Rybaltowicz - <[H∇ZÁRD]>***