



Building **Connections**

Forestry

Road Building

Aggregate Supply

Utility Corridor

Agriculture

Project Management

TABLE OF CONTENTS

Who We Are.....	3
What We Do.....	3
Forestry Services.....	3
Road Building and Maintenance	3
Powerline and Utility Work	3
Agriculture	4
Land Resource Management and Ecosystem Integration.....	4
Project Management.....	4
Strategic Assets & Material Supply	5
Aggregate Supply – Strimbold Farm Pit.....	5
Development Lands.....	5
How We Work	6
Building Ties from Mutual Respect and Success	6
Respecting the Land	6
Safety & Accountability	6
Contact Us	7
Our Team	7
Our Office	7

Who We Are

E.A. Strimbold Ltd. is a family-owned business founded in 1965. Based in Burns Lake, British Columbia, on the unceded territory of the Wet'suwet'en people. We combine the heart of a small-town company with the reach and capabilities of a large-scale operation. E.A. Strimbold Ltd. is an innovative company that deals with everything from forestry, road construction, agriculture, aggregate supply, transmission line clearing and grubbing to overall project management. For over five decades, we've grown through integrity, innovation, and relationships.

What We Do

FORESTRY SERVICES

With a long and pioneering history in the forest industry, E.A. Strimbold Ltd. has worked across British Columbia and parts of Alberta. We introduced one of the first saw felling heads in BC and later helped pioneer selective harvesting and cut-to-length logging. Our experience includes:

- Selective harvesting and stump to dump logging
- Forest license and cutting permit management
- Annual harvest volumes exceeding 120,000m³

ROAD BUILDING AND MAINTENANCE

We build and maintain access across some of Canada's most challenging terrain. Whether it's constructing new roads or keeping winter routes clear, we deliver with precision and durability:

- Engineered road construction
- Engineered bridge installation
- Snow removal and grading

POWERLINE AND UTILITY WORK

E.A. Strimbold Ltd. has been a trusted partner for BC Hydro and other energy infrastructure projects. Our utility corridor work includes:

- Vegetation management and pine beetle reduction along BC Hydro distribution lines
- Access development and powerline clearing from Tatogga to Iskut in partnership with Valley Power
- Clearing, grubbing, and road building with Valard Power on the Northwest Transmission Line
- Clearing, grubbing, and road building on the Red Chris line from Bob Quinn to Red Chris Mine
- Right-of-way clearing and road construction for a new AltaGas transmission line corridor near Iskut

E.A. Strimbold Ltd.

ROOTED IN THE LAND. DRIVEN BY PURPOSE



FORESTRY



ROAD BUILDING



AGGREGATE SUPPLY



UTILITY CORRIDOR



AGRICULTURE



PROJECT MANAGEMENT

AGRICULTURE

E.A. Strimbold Ltd. manages a substantial agricultural operation on the headwaters of Bulkley Lake. We support both our operations and the regional agricultural economy through active land use and livestock management. Our farm operation includes:

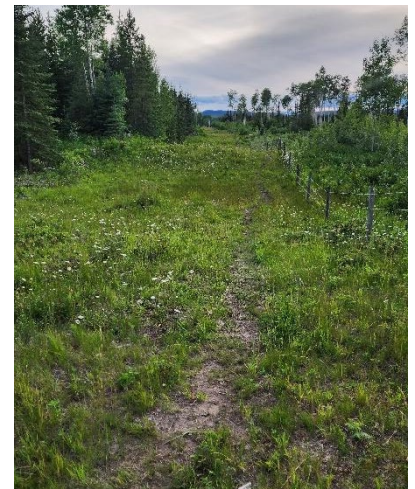
- Maintaining a working cattle range, which includes a range license, private land, and forest lands.
- Managing approximately 500 hectares of productive hay land
- Integrating land management with environmental and forestry values



LAND RESOURCE MANAGEMENT AND ECOSYSTEM INTEGRATION

We actively manage private land and practice sustainable land stewardship. As part of our resource management, we incorporate key fire mitigation strategies. Our work includes:

- Holding and managing three Woodlot Licenses
- A coordinated land management strategy that combines range fencing, rotational grazing, forest thinning, fuel load reduction, and interconnected road systems—designed to reduce wildfire risk and improve landscape resilience.
- Implementing forest and riparian restoration in partnership with local First Nations and the Department of Fisheries and Oceans—enhancing biodiversity and resilience along key watersheds



PROJECT MANAGEMENT

From permitting to execution, we offer end-to-end project solutions. We've led and delivered major initiatives in partnership with First Nations, government, and industry stakeholders. Our track record includes:

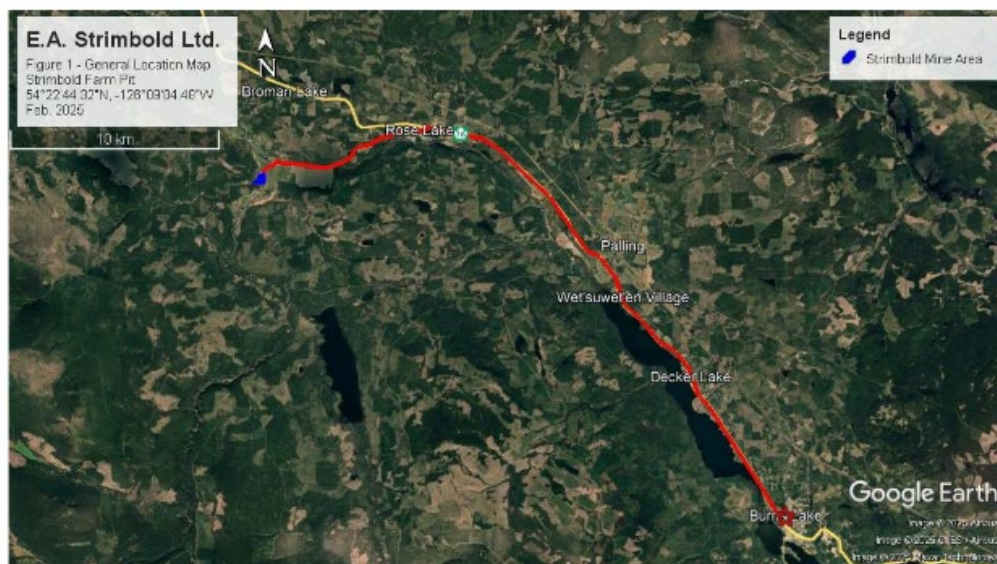
- Land clearing and vegetation management for over 300 km of transmission line corridors
- Large-scale beetle kill wood removal
- Regulatory and environmental compliance oversight
- Manage wildfire response on behalf of BC Wildfire
- Full-service remote project support, including camp setup and management, on-site fueling, mobile mechanical support, and logistical coordination for remote crews and equipment

Strategic Assets & Material Supply

AGGREGATE SUPPLY – STRIMBOLD FARM PIT

E.A. Strimbold Ltd. operates the Strimbold Farm Pit under Mine Permit G-2-41. Located approximately 30 km west of Burns Lake off Highway 16, the pit sits on private agricultural land within a 64.91 ha property. The designated mine area is ~17.9 ha.

Material is processed on-site and made available for local infrastructure and construction projects. The operation adheres to environmental standards with sediment control, dust and noise mitigation, and progressive reclamation practices. Our gravel products are a reliable, locally sourced solution for northern BC projects.



DEVELOPMENT LANDS

E.A. Strimbold Ltd. owns a strategically located parcel of industrial land between Decker Lake and Burns Lake.

This property includes:

- **35.45 acres (14.4 ha)** zoned **M1 Light Industrial** with flat highway access and approximately 1 km of Highway 16 frontage
- **81.5 acres (33 ha)** zoned **H1 – Undeveloped**, with potential for temporary use permitting

This location presents significant opportunity for future development, temporary industrial activities, or staging for regional projects.

How We Work

BUILDING TIES FROM MUTUAL RESPECT AND SUCCESS

E.A. Strimbold Ltd. recognizes the value of strong, respectful relationships with Indigenous communities. The lands we work on are the traditional territories of Indigenous peoples, and we believe these partnerships are essential for building a balanced and inclusive economy across British Columbia and Canada.

We have proudly partnered with Indigenous individuals and companies such as Deno Cho Industries and Kaamsim Contracting, and we consistently strive to employ local Indigenous community members. Our work is guided by mutual respect, collaboration, and long-term relationship building.

RESPECTING THE LAND

Operating from our farm-based headquarters, we understand firsthand how the land sustains us. Environmental stewardship is embedded in every aspect of our work.



SAFETY & ACCOUNTABILITY

We don't just finish jobs—we complete them safely, correctly, and with environmental care. Our exceptional safety record reflects our training, culture, and standards. We are SAFE Certified with the BC Council of Forest Industries.



Contact Us

OUR TEAM

Marvin Strimbold – President

mstrimboldh@hotmail.com

Cell: 250.692.6586

Karl Strimbold, B.Sc., LL.B. – Manager

karl@eastrimbold.ca

Cell: 250.692.6870

Brenda Matson – Finance and Administration

eastrimbold@hotmail.com

OUR OFFICE

E.A. Strimbold Ltd.

P.O. Box 569

Burns Lake, BC V0J 1E0

contact@eastrimbold.ca

