

Chronic Wasting Disease Sample Collection

(brainstem and lymph nodes)

Adapted from the USDA VS and Wyoming State Veterinary Laboratory

Figure 1 (photo c/o Indiana DNR)

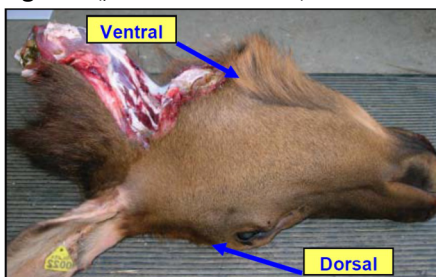


Figure 2 (photo c/o Indiana DNR)

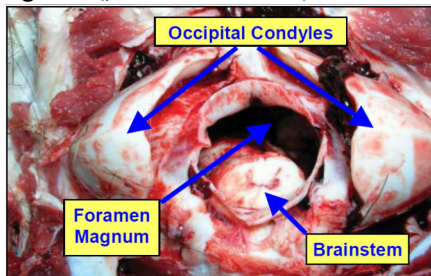


Figure 3 (photo c/o Wyoming State Vet Lab)

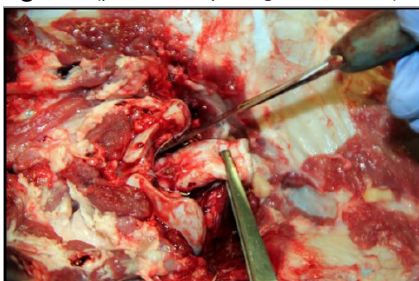
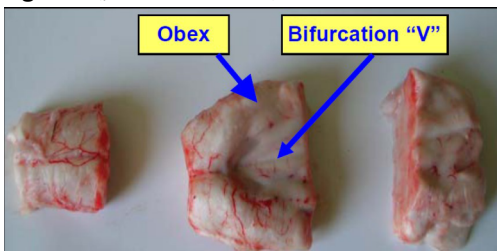


Figure 4 (photo c/o Indiana DNR)



Sampling Procedure for Obex/Brainstem

1. Remove the head at the atlanto-occipital joint (between skull and first vertebra). Cut behind the back of the ears and extend along the angle of the jaw.
2. Position the head upside down (**Figure 1**). Locate the occipital condyles and foramen magnum (opening into brain). Locate the brainstem inside the foramen magnum (**Figure 2**). When cutting through the first joint, make sure to cut through the brainstem.
3. Gently lift the brainstem with forceps and insert sharp narrow blade or scalpel into the braincase to cut the brainstem as far forward as you can reach (**Figure 3**). The desired piece of brainstem (obex) is at least 1" inside the skull in a deer and a little further in an elk or moose.
4. Remove the brainstem using forceps and gravity. Examine to ensure the proper obex sample (V or Y shape) is preserved (**Figure 4**). Cut out this piece with a sharp knife.

Equipment needed:

Gloves, sharp narrow blade knife or scalpel, forceps, Whirl-Pak or Zip Lock Bags or plastic jars, permanent marker or labels, ice packs, cooler and bleach.

Figure 5 (photo c/o MN DNR)

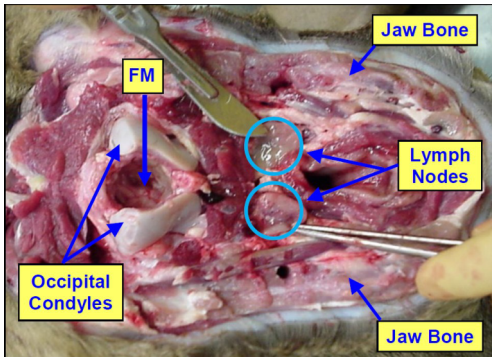
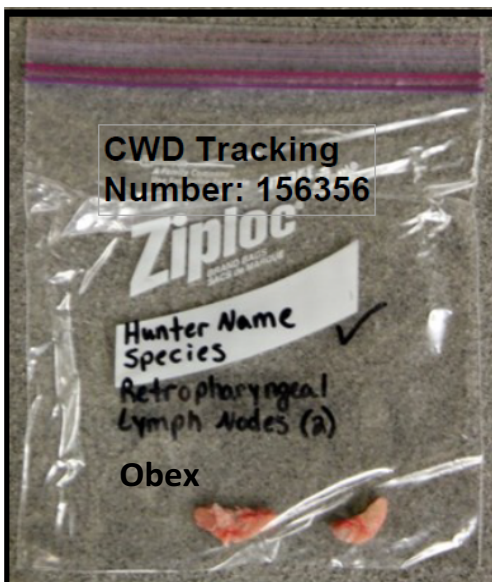


Figure 6 (photo c/o Wyoming State Vet Lab)



Sampling Procedure for Retropharyngeal Lymph Nodes

1. With the head positioned upside down, locate the trachea (windpipe) a foramen magnum (opening into skull).
2. Lift the trachea and dissect the muscles between the trachea and foramen magnum on either side of the midline.
3. The retropharyngeal lymph nodes are located on either side deep in the space half way between the pharynx (throat/trachea) and the foramen magnum (with head upside down). The lymph nodes are round or oval and much firmer and rounder than the surrounding tissue. They are about the size of a peanut to an almond in a deer and larger in elk and moose.

Sample Submission Procedure

1. Package lymph nodes and brainstem in a Whirl-Pak, Ziploc bag or plastic container.
2. It is best to keep samples in a sturdy container to prevent crushing and keep samples cool (refrigerator or cooler with ice packs) before and during transport.
3. Go to cwdsk.ca to fill out an online submission form. You will get a CWD tracking number. Write your CWD tracking number on the bag/container. Keep a copy of this number for your records.
4. Deliver samples to a Ministry of Environment field office. For a list of drop-off locations, please visit cwdsk.ca or saskatchewan.ca/cwd.
5. Clean your knife/instruments with soap and water and disinfect by soaking in 50 per cent bleach solution for least 30 minutes.
6. Double bag remaining carcass parts and dispose in an approved landfill.

More info?

Contact the Saskatchewan Ministry of Environment
Client Service Office at
Tel: 1-800-567-4224 (toll-free in North America)
or 306-787-2584.
Email: centre.inquiry@gov.sk.ca