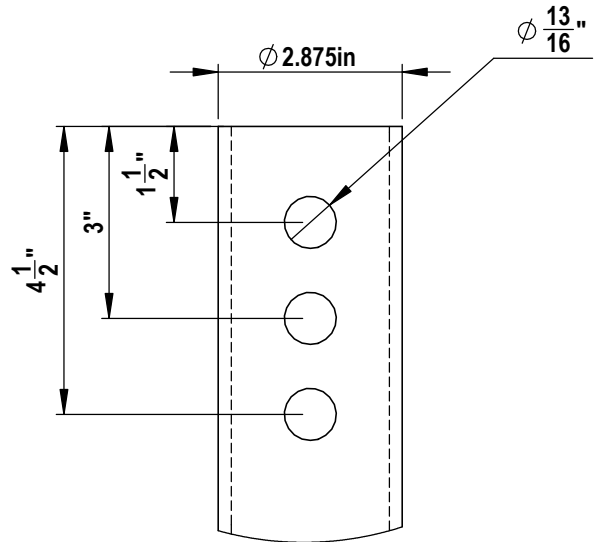
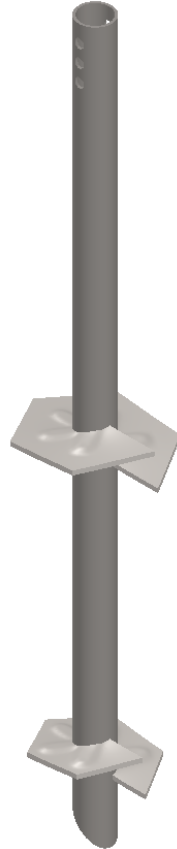
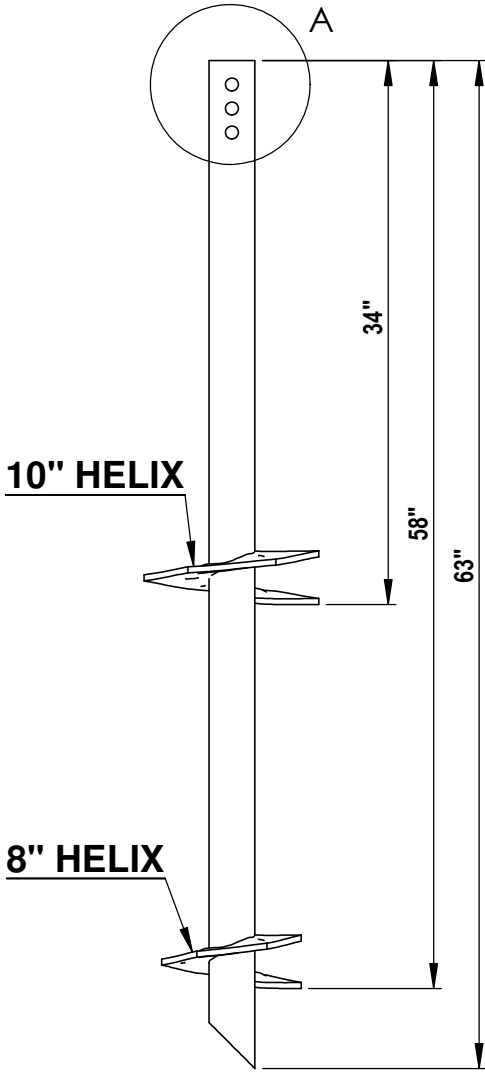


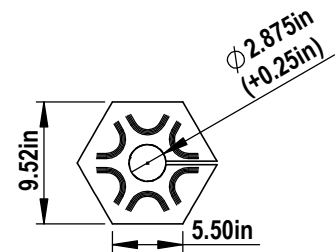
**NOTES:**

1. SHAFT: ROUND STRUCTURAL ERW TUBING PER ASTM A500 GR B, 2.50" SCH40. MINIMUM YIELD 50 KSI, MINIMUM TENSILE STRENGTH 65 KSI AND MINIMUM ELONGATION 23 PERCENT.
2. TORQUE STRENGTH RATING = 6,000 FT-LB
3. LOAD TO TORQUE RATIO (KT) = 9
4. USE THREE 3/4" A307 GR A BOLTS TO ATTACH TO AN EXTENSION.
5. AVAILABLE NOMINAL LENGTHS ARE 2', 5', 7' AND 10.5'

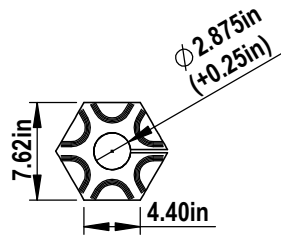


**A** **DETAIL A**  
N.T.S.

**1** **2.5" SCH40 DOUBLE HELIX**  
1" = 1' 0"



**3** **10" HELIX**  
N.T.S.



**2** **8" HELIX**  
N.T.S.

CANTSINK MANUFACTURING, INC.



71 First Avenue, N.W.  
Lilburn, Georgia 30047  
678-280-PILE(7453)  
FAX:678-280-3476

Title: CANTSINK HELICAL PILE LEAD

Catalog No. 2.5-40L05-8-10

Revision: RV-12-3/2/2020

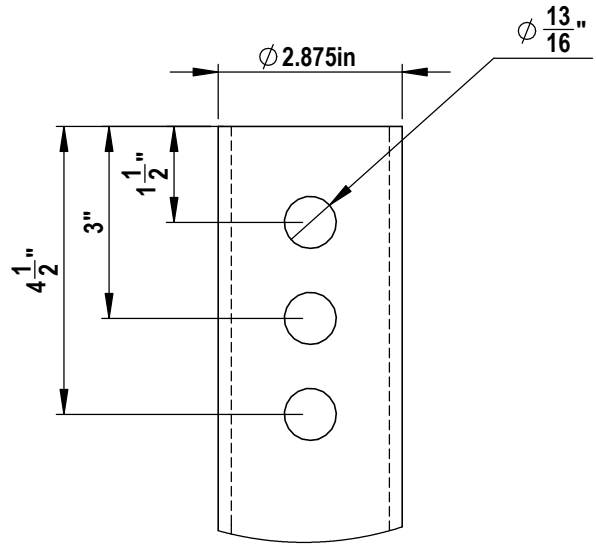
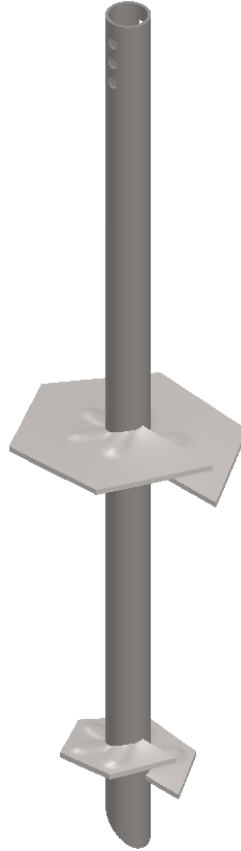
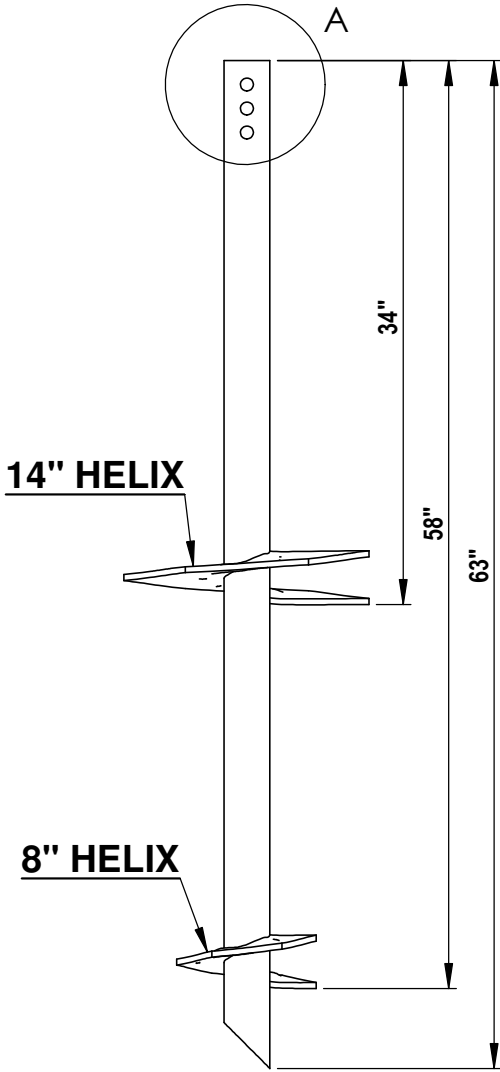
Scale: N.T.S.

Drawn by: LXSS

Sheet: 1/1

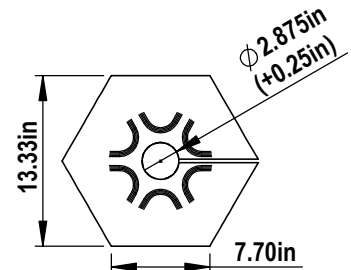
**NOTES:**

1. SHAFT: ROUND STRUCTURAL ERW TUBING PER ASTM A500 GR B, 2.50" SCH40. MINIMUM YIELD 50 KSI, MINIMUM TENSILE STRENGTH 65 KSI AND MINIMUM ELONGATION 23 PERCENT.
2. TORQUE STRENGTH RATING = 6,000 FT-LB
3. LOAD TO TORQUE RATIO (KT) = 9
4. USE THREE 3/4" A307 GR A BOLTS TO ATTACH TO AN EXTENSION.
5. AVAILABLE NOMINAL LENGTHS ARE 2', 5', 7' AND 10.5'

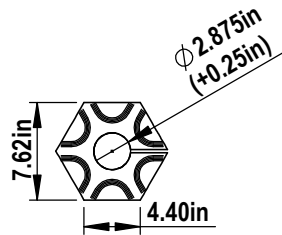


**A** **DETAIL A**  
N.T.S.

**1** **2.5" SCH40 DOUBLE HELIX**  
1" = 1' 0"



**3** **14" HELIX**  
N.T.S.



**2** **8" HELIX**  
N.T.S.

CANTSINK MANUFACTURING, INC.



71 First Avenue, N.W.  
Lilburn, Georgia 30047  
678-280-PILE(7453)  
FAX:678-280-3476

Title: CANTSINK HELICAL PILE LEAD

Catalog No. 2.5-40L05-8-14

Revision: RV-12-3/2/2020

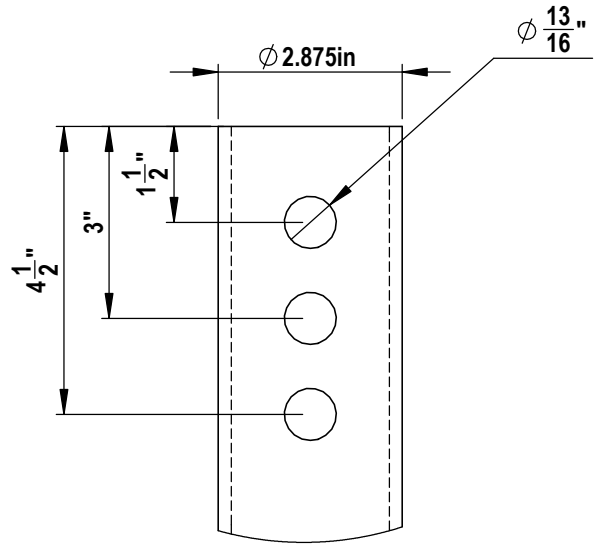
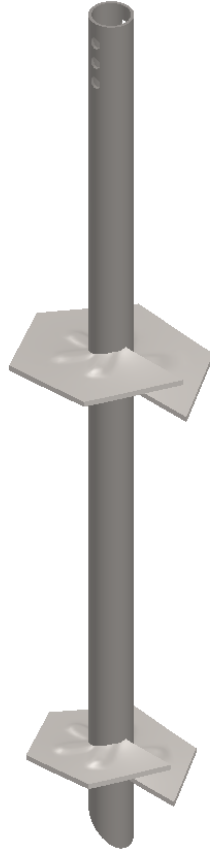
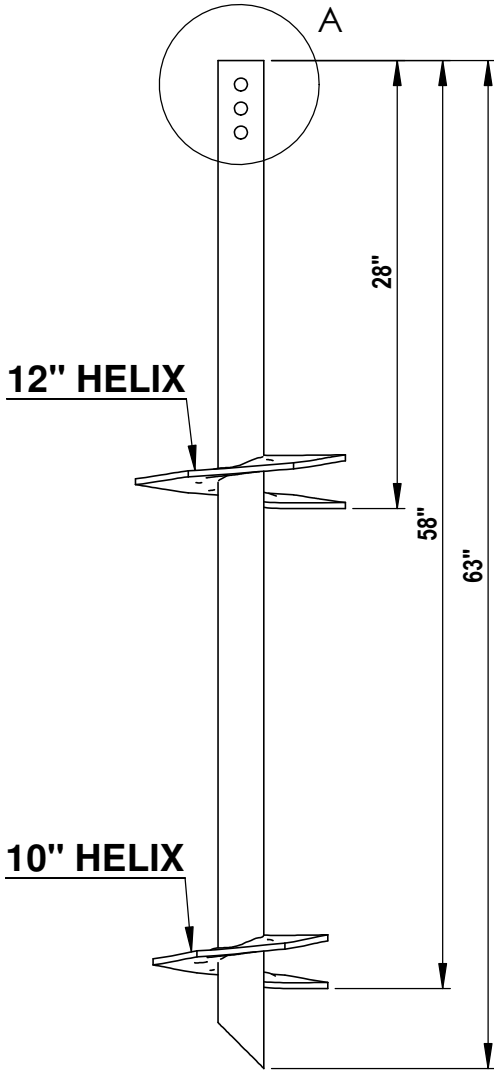
Scale: N.T.S.

Drawn by: LXSS

Sheet: 1/1

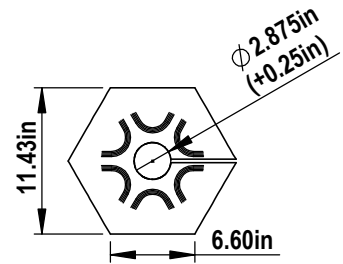
**NOTES:**

1. SHAFT: ROUND STRUCTURAL ERW TUBING PER ASTM A500 GR B, 2.50" SCH40. MINIMUM YIELD 50 KSI, MINIMUM TENSILE STRENGTH 65 KSI AND MINIMUM ELONGATION 23 PERCENT.
2. TORQUE STRENGTH RATING = 6,000 FT-LB
3. LOAD TO TORQUE RATIO (KT) = 9
4. USE THREE 3/4" A307 GR A BOLTS TO ATTACH TO AN EXTENSION.
5. AVAILABLE NOMINAL LENGTHS ARE 2', 5', 7' AND 10.5'

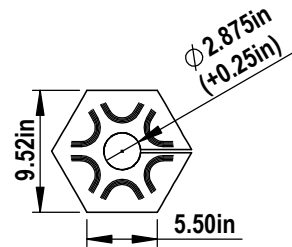


**A** **DETAIL A**  
N.T.S.

**1** **2.5" SCH40 DOUBLE HELIX**  
1" = 1' 0"



**3** **12" HELIX**  
N.T.S.



**2** **10" HELIX**  
N.T.S.

CANTSINK MANUFACTURING, INC.



71 First Avenue, N.W.  
Lilburn, Georgia 30047  
678-280-PILE(7453)  
FAX:678-280-3476

Title: CANTSINK HELICAL PILE LEAD

Catalog No. 2.5-40L05-10-12

Revision: RV-12-3/2/2020

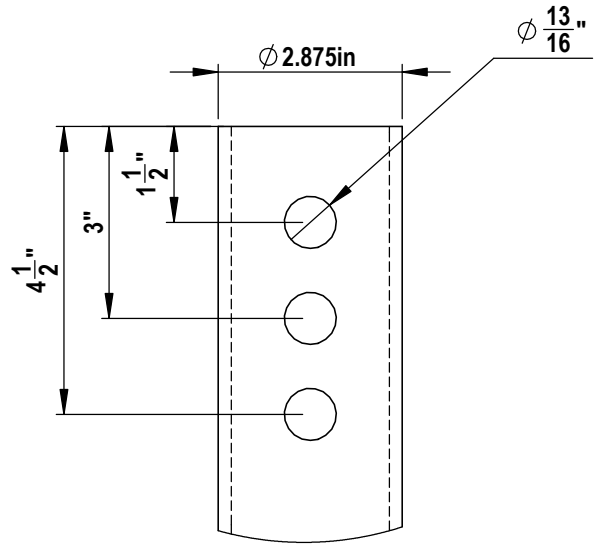
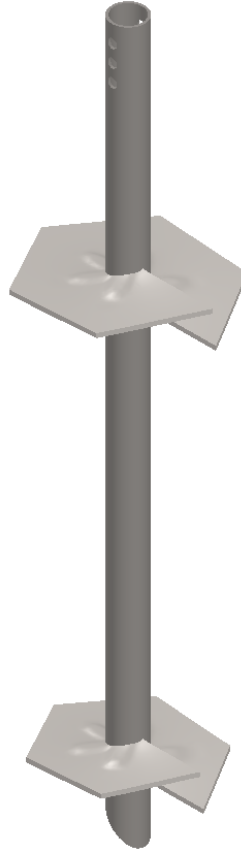
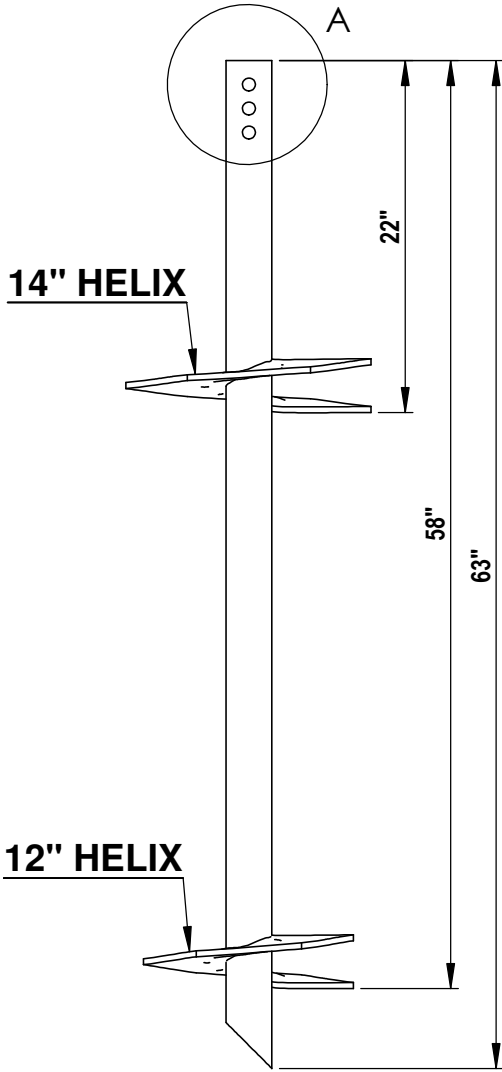
Scale: N.T.S.

Drawn by: LXSS

Sheet: 1/1

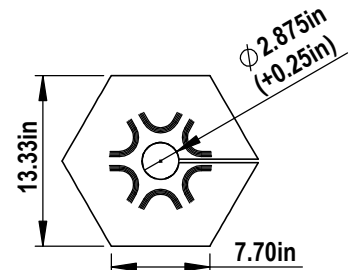
**NOTES:**

1. SHAFT: ROUND STRUCTURAL ERW TUBING PER ASTM A500 GR B, 2.50" SCH40. MINIMUM YIELD 50 KSI, MINIMUM TENSILE STRENGTH 65 KSI AND MINIMUM ELONGATION 23 PERCENT.
2. TORQUE STRENGTH RATING = 6,000 FT-LB
3. LOAD TO TORQUE RATIO (KT) = 9
4. USE THREE 3/4" A307 GR A BOLTS TO ATTACH TO AN EXTENSION.
5. AVAILABLE NOMINAL LENGTHS ARE 2', 5', 7' AND 10.5'

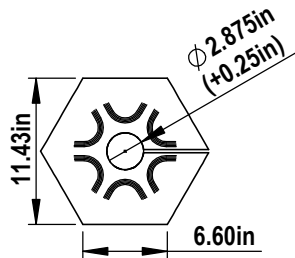


**A** **DETAIL A**  
N.T.S.

**1** **2.5" SCH40 DOUBLE HELIX**  
1" = 1' 0"



**3** **14" HELIX**  
N.T.S.



**2** **12" HELIX**  
N.T.S.

CANTSINK MANUFACTURING, INC.



71 First Avenue, N.W.  
Lilburn, Georgia 30047  
678-280-PILE(7453)  
FAX: 678-280-3476

Title: CANTSINK HELICAL PILE LEAD

Catalog No. 2.5-40L05-12-14

Revision: RV-12-3/2/2020

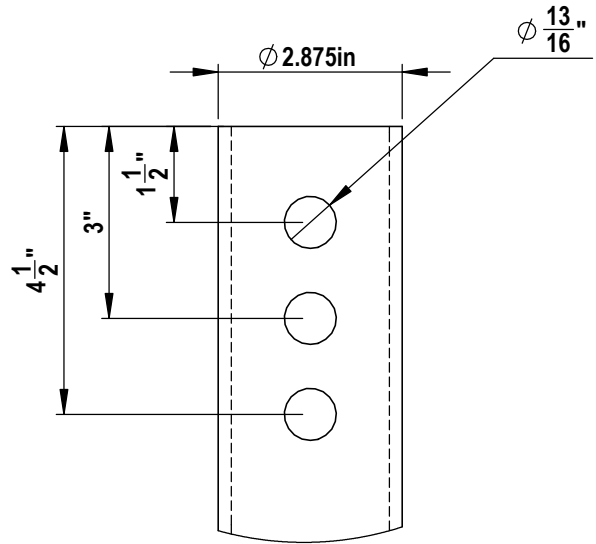
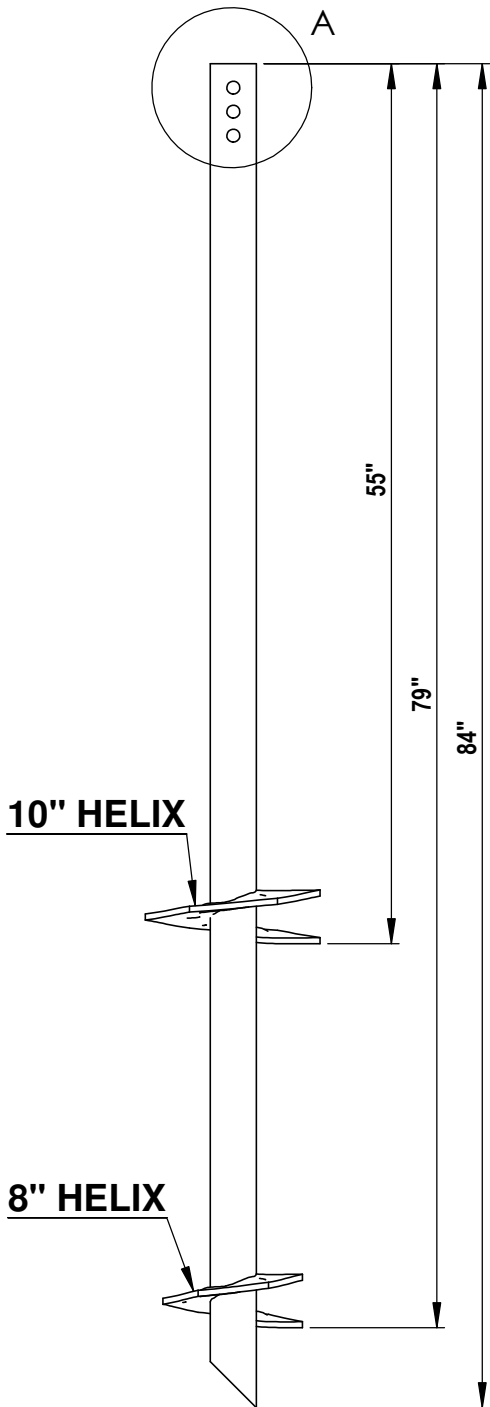
Scale: N.T.S.

Drawn by: LXSS

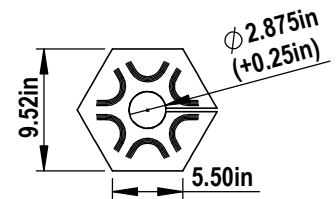
Sheet: 1/1

**NOTES:**

1. SHAFT: ROUND STRUCTURAL ERW TUBING PER ASTM A500 GR B, 2.50" SCH40. MINIMUM YIELD 50 KSI, MINIMUM TENSILE STRENGTH 65 KSI AND MINIMUM ELONGATION 23 PERCENT.
2. TORQUE STRENGTH RATING = 6,000 FT-LB
3. LOAD TO TORQUE RATIO (KT) = 9
4. USE THREE 3/4" A307 GR A BOLTS TO ATTACH TO AN EXTENSION.
5. AVAILABLE NOMINAL LENGTHS ARE 2', 5', 7' AND 10.5'

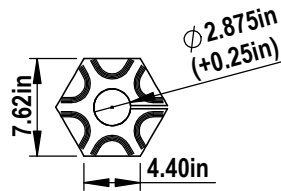


**A** **DETAIL A**  
N.T.S.



**3** **10" HELIX**  
N.T.S.

**1** **2.5" SCH40 DOUBLE HELIX**  
1" = 1' 0"



**2** **8" HELIX**  
N.T.S.

CANTSINK MANUFACTURING, INC.



71 First Avenue, N.W.  
Lilburn, Georgia 30047  
678-280-PILE(7453)  
FAX:678-280-3476

Title: CANTSINK HELICAL PILE LEAD

Catalog No. 2.5-40L07-8-10

Revision: RV-12-3/2/2020

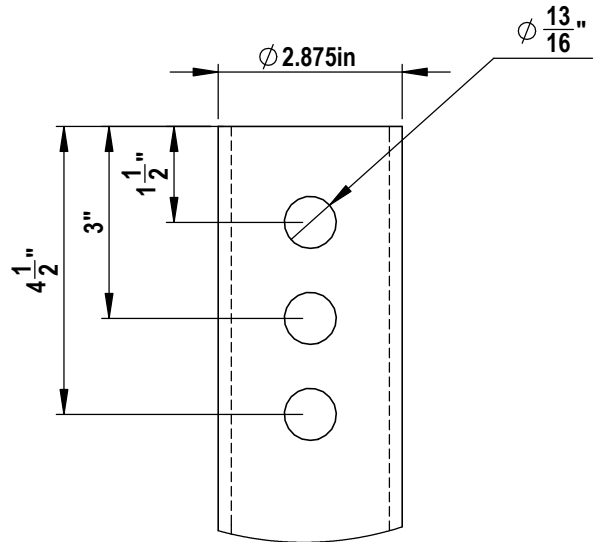
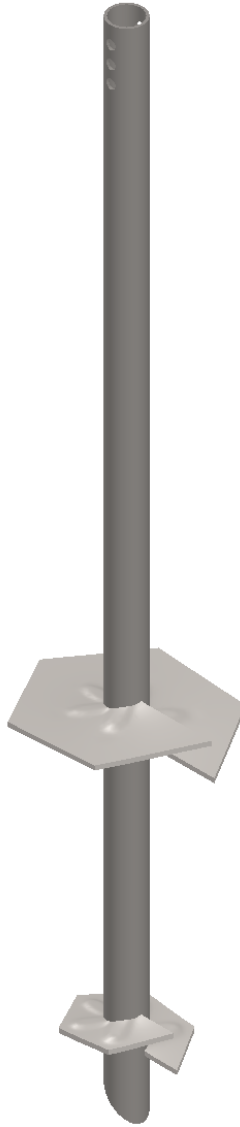
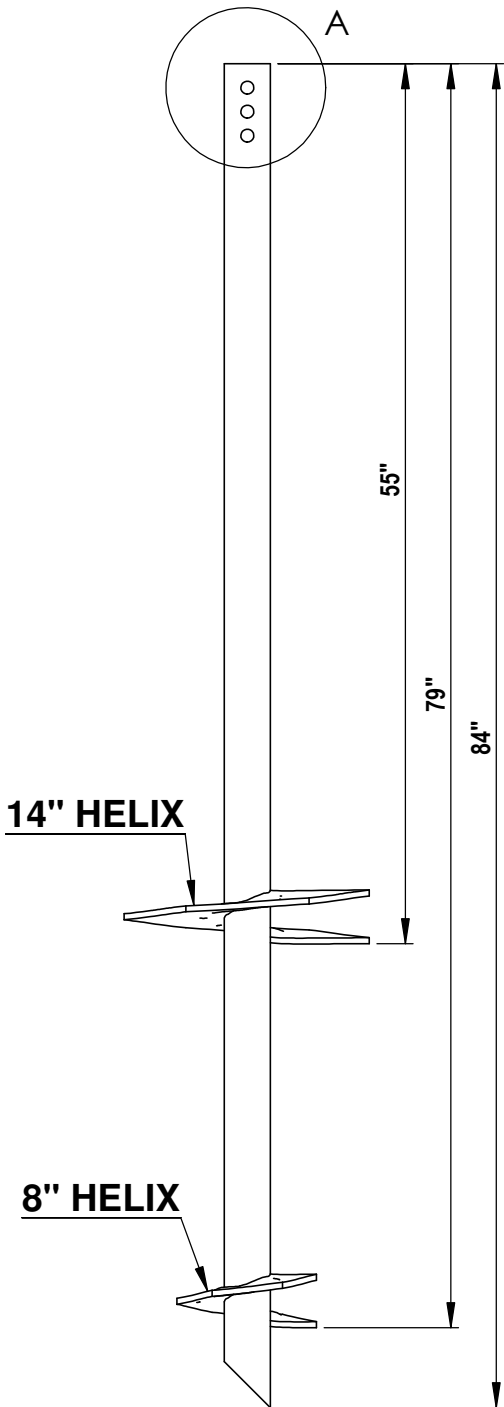
Scale: N.T.S.

Drawn by: LXSS

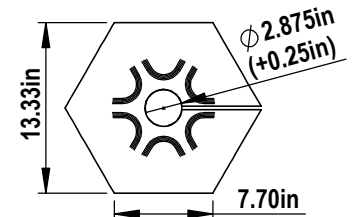
Sheet: 1/1

**NOTES:**

1. SHAFT: ROUND STRUCTURAL ERW TUBING PER ASTM A500 GR B, 2.50" SCH40. MINIMUM YIELD 50 KSI, MINIMUM TENSILE STRENGTH 65 KSI AND MINIMUM ELONGATION 23 PERCENT.
2. TORQUE STRENGTH RATING = 6,000 FT-LB
3. LOAD TO TORQUE RATIO (KT) = 9
4. USE THREE 3/4" A307 GR A BOLTS TO ATTACH TO AN EXTENSION.
5. AVAILABLE NOMINAL LENGTHS ARE 2', 5', 7' AND 10.5'

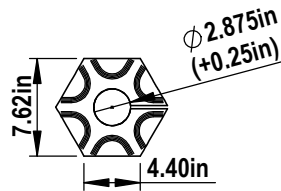


**A** DETAIL A  
N.T.S.



**3** 14" HELIX  
N.T.S.

**1** 2.5" SCH40 DOUBLE HELIX  
1" = 1' 0"



**2** 8" HELIX  
N.T.S.

CANTSINK MANUFACTURING, INC.



71 First Avenue, N.W.  
Lilburn, Georgia 30047  
678-280-PILE(7453)  
FAX:678-280-3476

Title: CANTSINK HELICAL PILE LEAD

Catalog No. 2.5-40L07-8-14

Revision: RV-12-3/2/2020

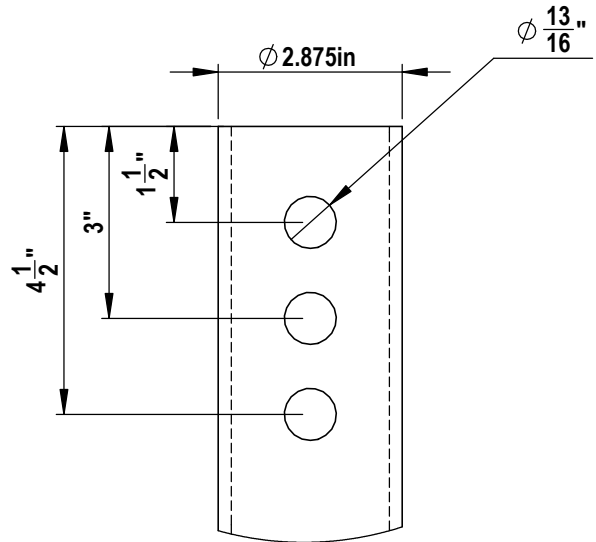
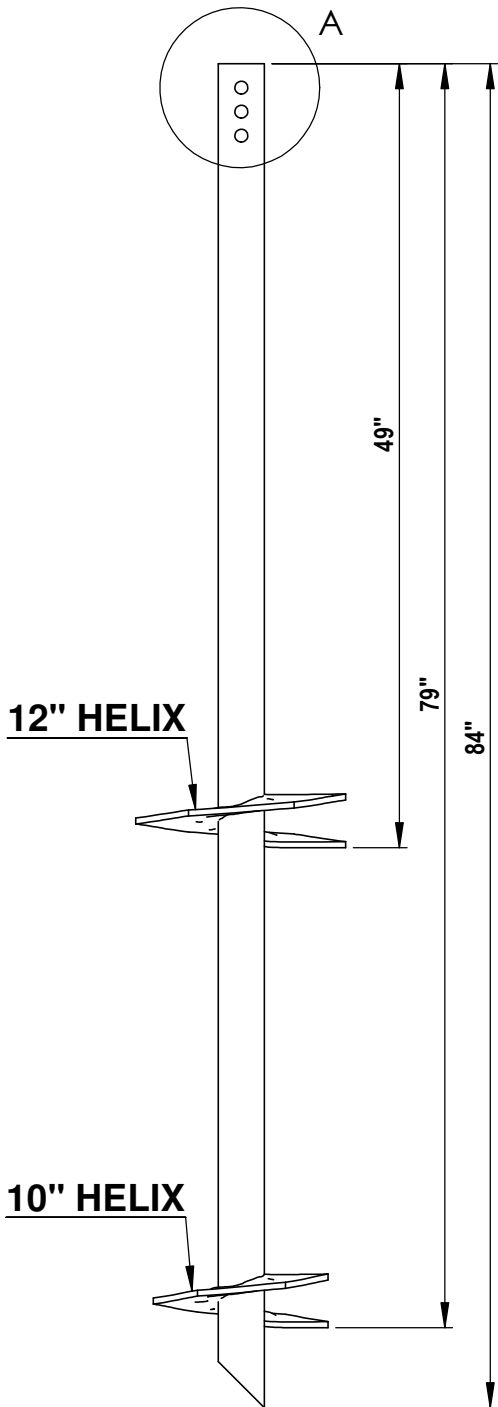
Scale: N.T.S.

Drawn by: LXSS

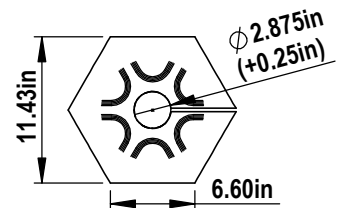
Sheet: 1/1

**NOTES:**

1. SHAFT: ROUND STRUCTURAL ERW TUBING PER ASTM A500 GR B, 2.50" SCH40. MINIMUM YIELD 50 KSI, MINIMUM TENSILE STRENGTH 65 KSI AND MINIMUM ELONGATION 23 PERCENT.
2. TORQUE STRENGTH RATING = 6,000 FT-LB
3. LOAD TO TORQUE RATIO (KT) = 9
4. USE THREE 3/4" A307 GR A BOLTS TO ATTACH TO AN EXTENSION.
5. AVAILABLE NOMINAL LENGTHS ARE 2', 5', 7' AND 10.5'

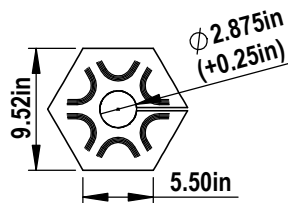


**A** **DETAIL A**  
N.T.S.



**3** **12" HELIX**  
N.T.S.

**1** **2.5" SCH40 DOUBLE HELIX**  
1" = 1' 0"



**2** **10" HELIX**  
N.T.S.

CANTSINK MANUFACTURING, INC.



71 First Avenue, N.W.  
Lilburn, Georgia 30047  
678-280-PILE(7453)  
FAX:678-280-3476

Title: CANTSINK HELICAL PILE LEAD

Catalog No. 2.5-40L07-10-12

Revision: RV-12-3/2/2020

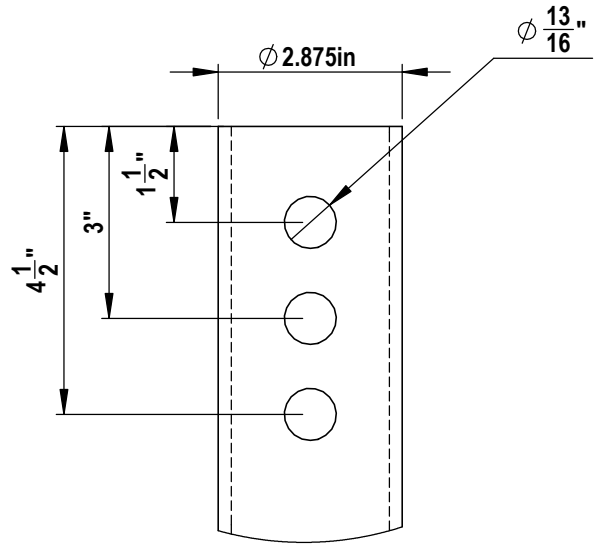
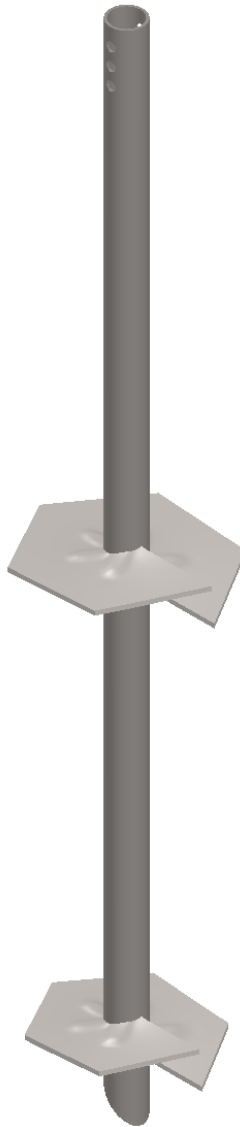
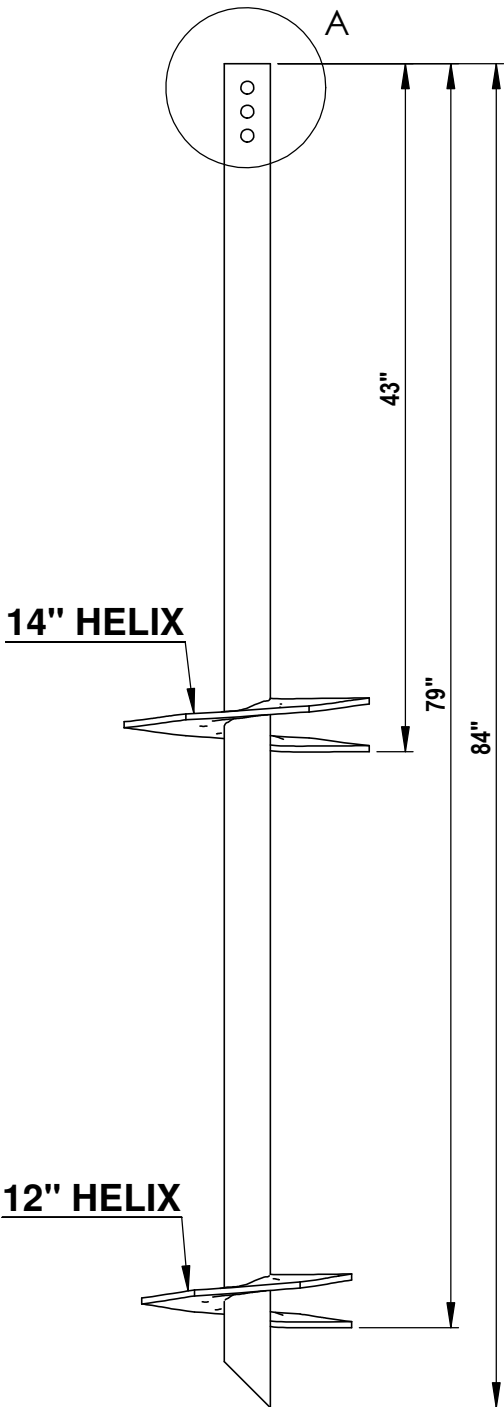
Scale: N.T.S.

Drawn by: LXSS

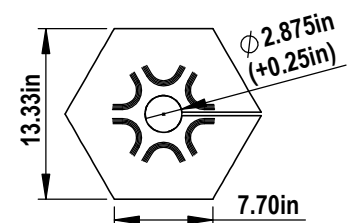
Sheet: 1/1

**NOTES:**

1. SHAFT: ROUND STRUCTURAL ERW TUBING PER ASTM A500 GR B, 2.50" SCH40. MINIMUM YIELD 50 KSI, MINIMUM TENSILE STRENGTH 65 KSI AND MINIMUM ELONGATION 23 PERCENT.
2. TORQUE STRENGTH RATING = 6,000 FT-LB
3. LOAD TO TORQUE RATIO (KT) = 9
4. USE THREE 3/4" A307 GR A BOLTS TO ATTACH TO AN EXTENSION.
5. AVAILABLE NOMINAL LENGTHS ARE 2', 5', 7' AND 10.5'

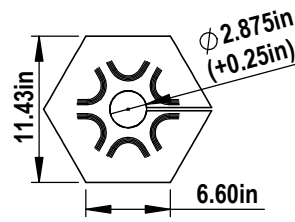


**A** **DETAIL A**  
N.T.S.



**3** **14" HELIX**  
N.T.S.

**1** **2.5" SCH40 DOUBLE HELIX**  
1" = 1' 0"



**2** **12" HELIX**  
N.T.S.

CANTSINK MANUFACTURING, INC.



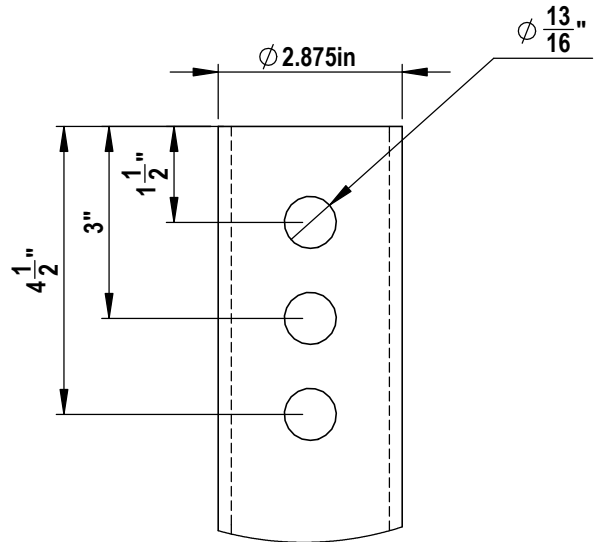
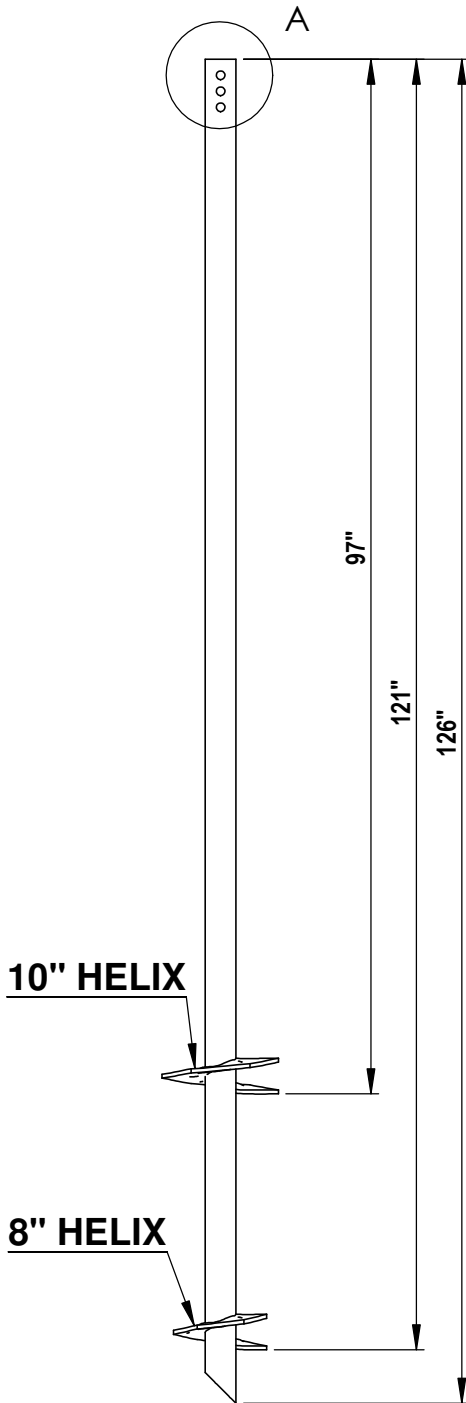
71 First Avenue, N.W.  
Lilburn, Georgia 30047  
678-280-PILE(7453)  
FAX:678-280-3476

Title: CANTSINK HELICAL PILE LEAD		Catalog No. 2.5-40L07-12-14	
Revision: RV-12-3/2/2020	Scale: N.T.S.	Drawn by: LXSS	Sheet: 1/1

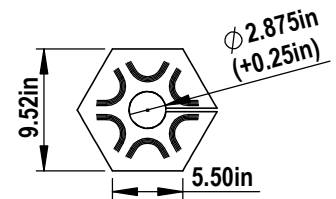


**NOTES:**

1. SHAFT: ROUND STRUCTURAL ERW TUBING PER ASTM A500 GR B, 2.50" SCH40. MINIMUM YIELD 50 KSI, MINIMUM TENSILE STRENGTH 65 KSI AND MINIMUM ELONGATION 23 PERCENT.
2. TORQUE STRENGTH RATING = 6,000 FT-LB
3. LOAD TO TORQUE RATIO (KT) = 9
4. USE THREE 3/4" A307 GR A BOLTS TO ATTACH TO AN EXTENSION.
5. AVAILABLE NOMINAL LENGTHS ARE 2', 5', 7' AND 10.5'

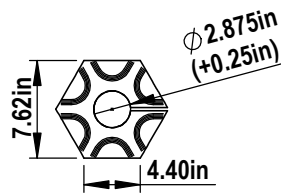


**A** **DETAIL A**  
N.T.S.



**3** **10" HELIX**  
N.T.S.

**1** **2.5" SCH40 DOUBLE HELIX**  
2/3" = 1' 0"



**2** **8" HELIX**  
N.T.S.

CANTSINK MANUFACTURING, INC.



71 First Avenue, N.W.  
Lilburn, Georgia 30047  
678-280-PILE(7453)  
FAX:678-280-3476

Title: CANTSINK HELICAL PILE LEAD

Catalog No. 2.5-40L10-8-10

Revision: RV-12-3/2/2020

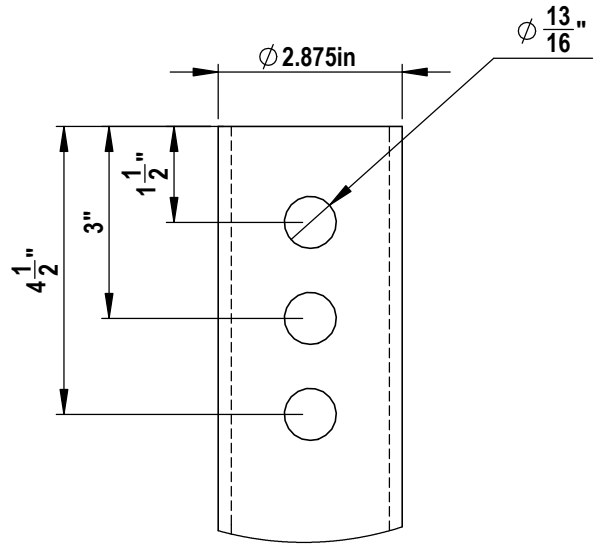
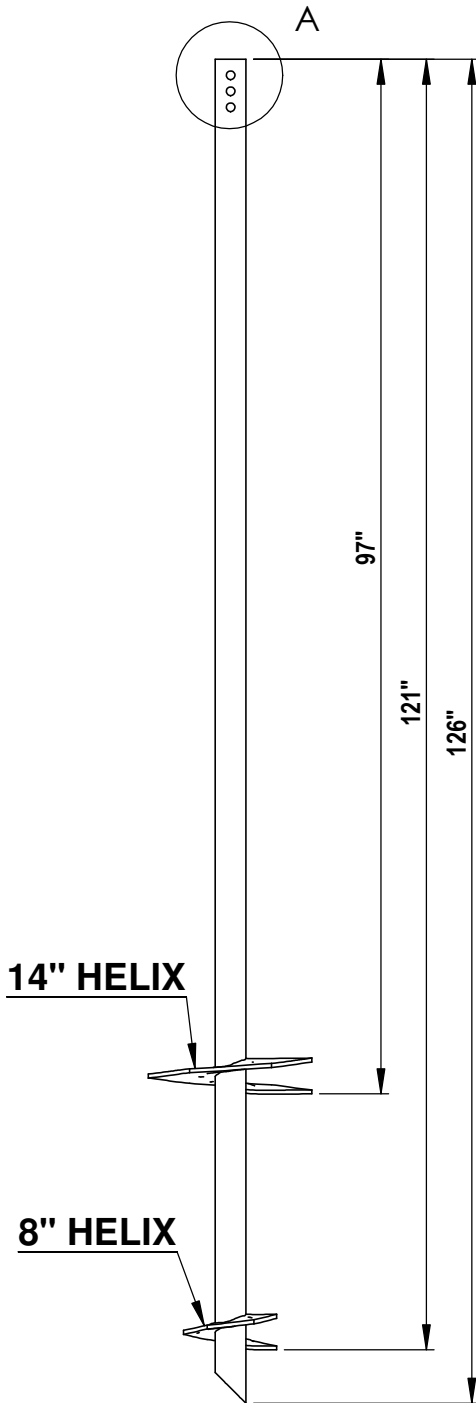
Scale: N.T.S.

Drawn by: LXSS

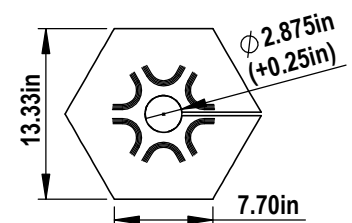
Sheet: 1/1

**NOTES:**

1. SHAFT: ROUND STRUCTURAL ERW TUBING PER ASTM A500 GR B, 2.50" SCH40. MINIMUM YIELD 50 KSI, MINIMUM TENSILE STRENGTH 65 KSI AND MINIMUM ELONGATION 23 PERCENT.
2. TORQUE STRENGTH RATING = 6,000 FT-LB
3. LOAD TO TORQUE RATIO (KT) = 9
4. USE THREE 3/4" A307 GR A BOLTS TO ATTACH TO AN EXTENSION.
5. AVAILABLE NOMINAL LENGTHS ARE 2', 5', 7' AND 10.5'

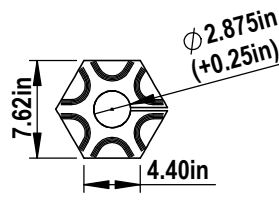


**A** **DETAIL A**  
N.T.S.



**3** **14" HELIX**  
N.T.S.

**1** **2.5" SCH40 DOUBLE HELIX**  
2/3" = 1' 0"



**2** **8" HELIX**  
N.T.S.

CANTSINK MANUFACTURING, INC.

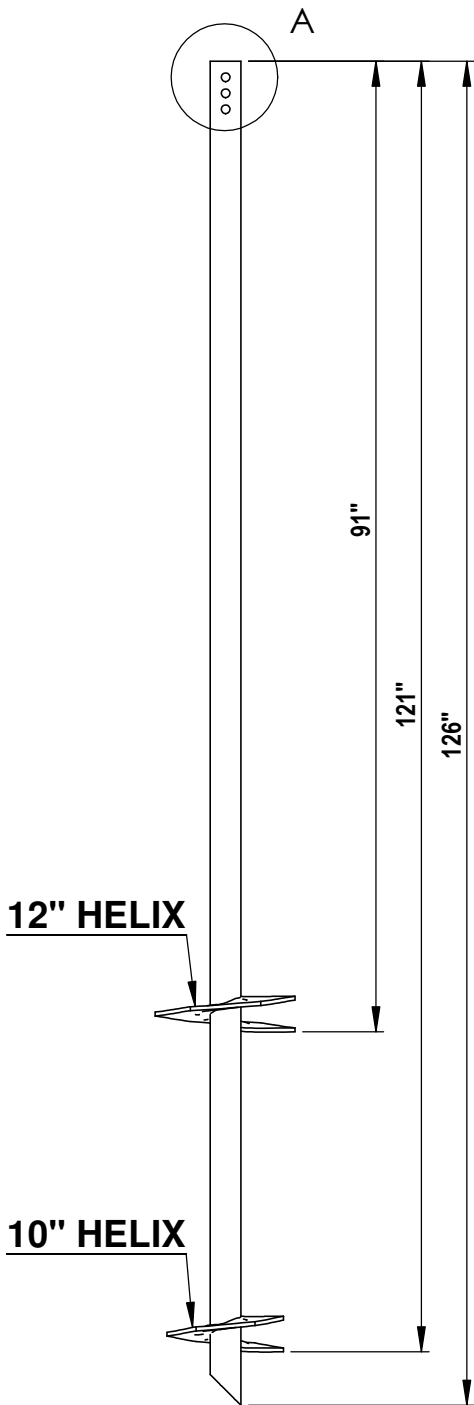


71 First Avenue, N.W.  
Lilburn, Georgia 30047  
678-280-PILE(7453)  
FAX:678-280-3476

Title: CANTSINK HELICAL PILE LEAD		Catalog No. 2.5-40L10-8-14	
Revision: RV-12-3/2/2020	Scale: N.T.S.	Drawn by: LXSS	Sheet: 1/1

**NOTES:**

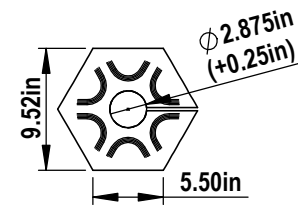
1. SHAFT: ROUND STRUCTURAL ERW TUBING PER ASTM A500 GR B, 2.50" SCH40. MINIMUM YIELD 50 KSI, MINIMUM TENSILE STRENGTH 65 KSI AND MINIMUM ELONGATION 23 PERCENT.
2. TORQUE STRENGTH RATING = 6,000 FT-LB
3. LOAD TO TORQUE RATIO (KT) = 9
4. USE THREE 3/4" A307 GR A BOLTS TO ATTACH TO AN EXTENSION.
5. AVAILABLE NOMINAL LENGTHS ARE 2', 5', 7' AND 10.5'



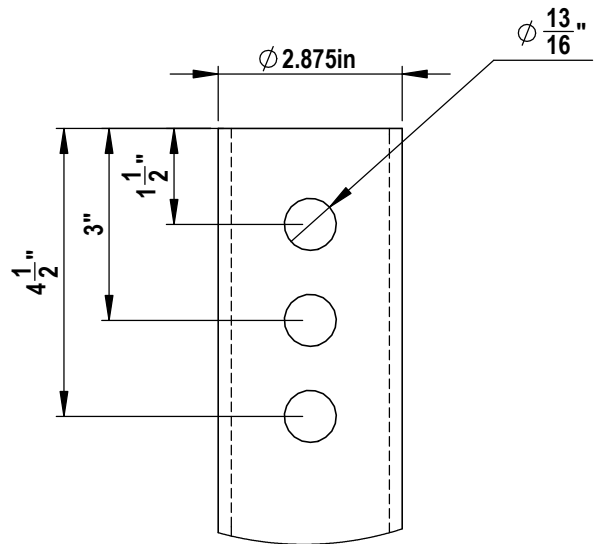
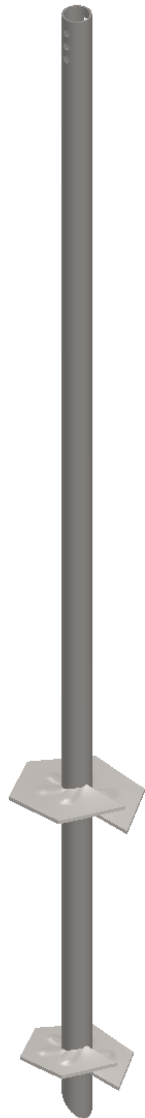
**12" HELIX**

**10" HELIX**

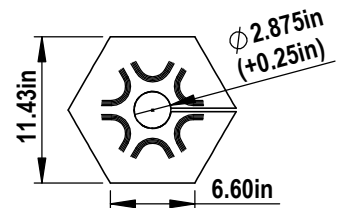
**1 2.5" SCH40 DOUBLE HELIX**  
2/3" = 1' 0"



**2 10" HELIX**  
N.T.S.



**A DETAIL A**  
N.T.S.



**3 12" HELIX**  
N.T.S.

CANTSINK MANUFACTURING, INC.



71 First Avenue, N.W.  
Lilburn, Georgia 30047  
678-280-PILE(7453)  
FAX:678-280-3476

Title: CANTSINK HELICAL PILE LEAD

Catalog No. 2.5-40L10-10-12

Revision: RV-12-3/2/2020

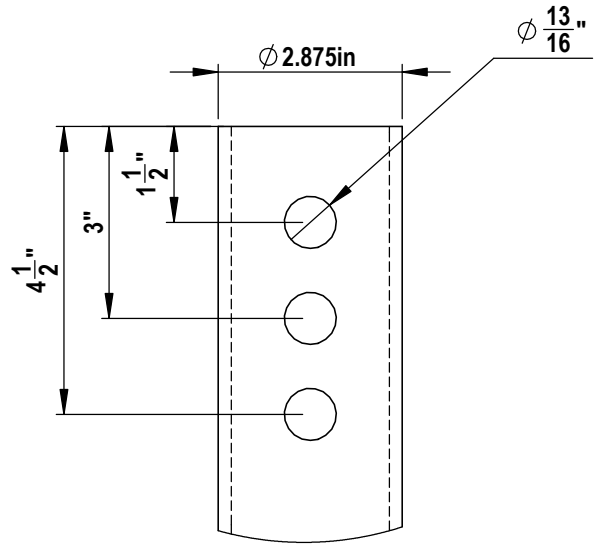
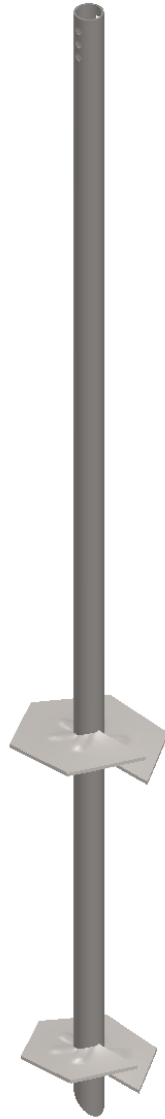
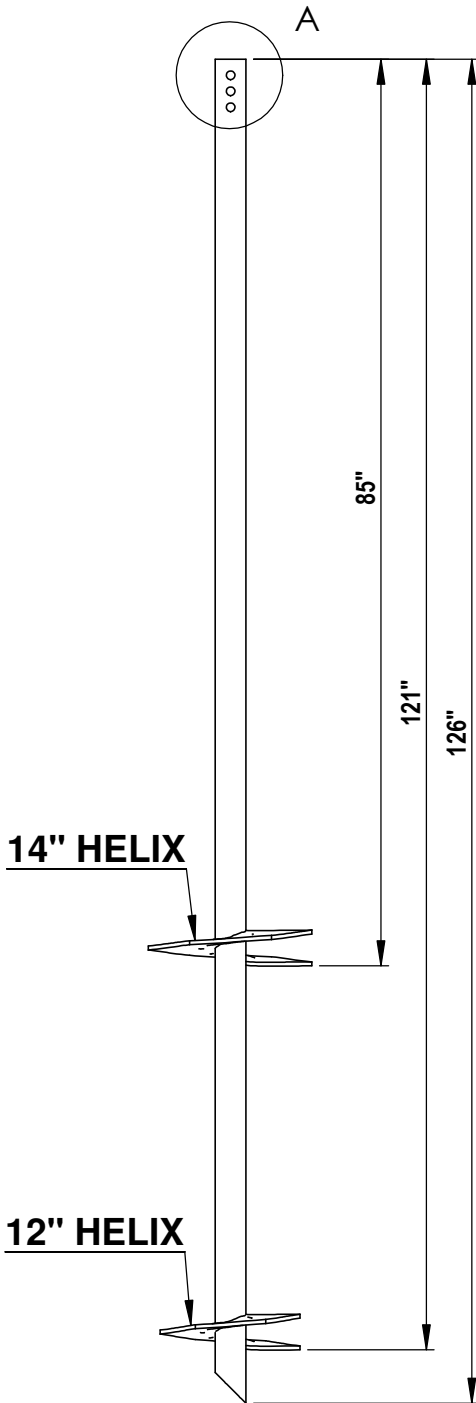
Scale: N.T.S.

Drawn by: LXSS

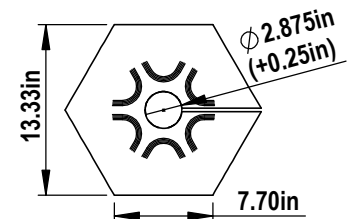
Sheet: 1/1

**NOTES:**

1. SHAFT: ROUND STRUCTURAL ERW TUBING PER ASTM A500 GR B, 2.50" SCH40. MINIMUM YIELD 50 KSI, MINIMUM TENSILE STRENGTH 65 KSI AND MINIMUM ELONGATION 23 PERCENT.
2. TORQUE STRENGTH RATING = 6,000 FT-LB
3. LOAD TO TORQUE RATIO (KT) = 9
4. USE THREE 3/4" A307 GR A BOLTS TO ATTACH TO AN EXTENSION.
5. AVAILABLE NOMINAL LENGTHS ARE 2', 5', 7' AND 10.5'

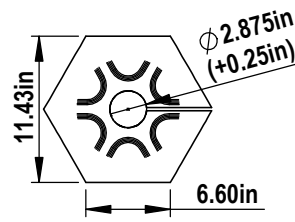


**A** DETAIL A  
N.T.S.



**3** 14" HELIX  
N.T.S.

**1** 2.5" SCH40 DOUBLE HELIX  
2/3" = 1' 0"



**2** 12" HELIX  
N.T.S.

CANTSINK MANUFACTURING, INC.



71 First Avenue, N.W.  
Lilburn, Georgia 30047  
678-280-PILE(7453)  
FAX:678-280-3476

Title: CANTSINK HELICAL PILE LEAD		Catalog No. 2.5-40L10-12-14	
Revision: RV-12-3/2/2020	Scale: N.T.S.	Drawn by: LXSS	Sheet: 1/1