

Population

CITY OF SHAWNEE: 31,720
POTTOWATOMIE COUNTY: 73,019
OKC MSA: 1,459,380

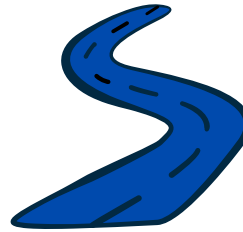
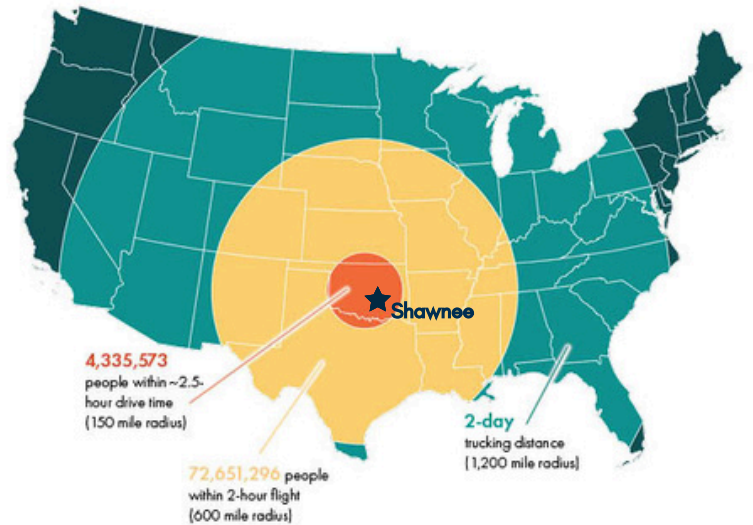
Workforce

TOTAL LABOR FORCE 808,345
 (60 mile radius)

UNEMPLOYMENT RATE 5.6%

CURRENT WORKFORCE 22.4%
 with a Bachelor's Degree or Higher

Where I-40 & I-35 Meet

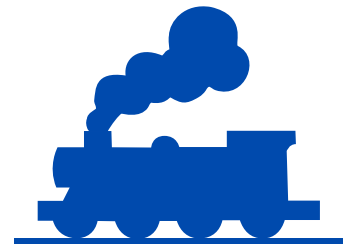
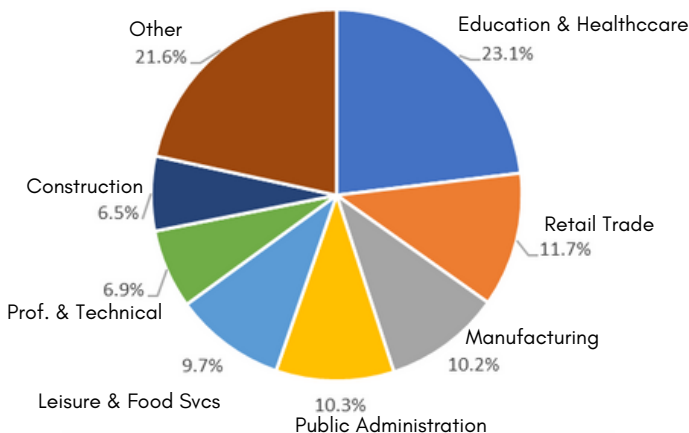


Expansion of 6 Lane I-40 from OKC to Hwy 177 to be Completed by 2028



22 Minutes to Tinker Air Force Base

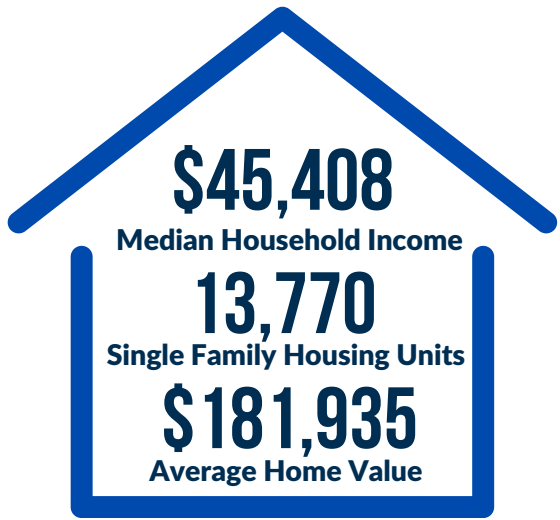
Industry Analysis



2 Class Rail Lines Available
 BNSF & UP Interchanges

Oklahoma ranks 4th in Corporate Tax Rankings

-Tax Foundation



Taxes

SALES TAX: 9.995%

- State of OK - 4.5%
- City of Shawnee - 4.0%
- Pottawatomie County - 1.495%

PERSONAL INCOME TAX: 4.75%

CORPORATE TAX RATE: 4.0%

**36 City Parks,
Spanning over
600 Acres in
Total**



Shawnee offers both a 4-year college and a comprehensive Career Tech System, making it an ideal choice for students seeking higher education or career advancement.



Gordon Cooper Technology Center has a 97% positive placement rate.

Georg Fischer Central Plastics is opening a 2nd manufacturing plant; \$30M investment will create 300 jobs by 2028.

MAJOR EMPLOYERS



Since 2012, SSM has grown by 437 employees, Georg Fischer Central Plastics by 286, Citizen Potawatomi Nation by 88 and Shawnee Public Schools by 85.